

Ap® 2021



Audiopipe®

2021

NEW PRODUCT
SHOWCASE

Ap® **MARINE**
SALT WATER SERIES

Ap® **MARINE**
SALT WATER SERIES

Ap® **Audiopipe**®
LOUD & CLEAR

Audiopipe®
HIGH PERFORMANCE PRO AUDIO PRODUCTS
PRO AUDIO

TXX-BDD SUBWOOFERS

The TXX-BDD series focuses on providing dealers with a high-quality, reliable, subwoofer capable of outperforming the best subwoofers in the market. Considered to be a performance subwoofer line as quality, durability and attraction are their strengths. They are reserved for our dealers and not offered at any online retail outlet.



1 year warranty extension is available when the unit is purchased, installed, and registered by an Audiopipe authorized dealer



12"

TXX-BDD2-12

1600 WATT MAX

12" High-Powered Car Subwoofer

- 1600 Watts Power (P.M.P.O.)
- 800 Watts Power (R.M.S)
- Frequency Response: 22-900Hz
- 2.5" 4-Layer Black Aluminum Voice Coil
- Air Cushion Foam Surround Composite Cone
- Deep Bumped T-Yoke Features Oversized Pipe Shape
- Powdered Black Patented Cast Aluminum Basket
- Mounting Depth: 188mm(7 3/8")
- 150 Oz. Strontium Magnet
- Impedance: 2 x 4 Ohms
- Sensitivity: 88dB



15"

TXX-BDD2-15

2000 WATT MAX

15" High-Powered Car Subwoofer

- 2000 Watts Power (P.M.P.O.)
- 1000 Watts Power (R.M.S)
- Frequency Response: 18-800Hz
- 3" 4-Layer Black Aluminum Voice Coil
- Air Cushion Foam Surround Composite Cone
- Deep Bumped T-Yoke Features Oversized Pipe Shape
- Powdered Black Patented Cast Aluminum Basket
- Mounting Depth: 209mm(8 1/4")
- 160 Oz. Strontium Magnet
- Impedance: 2 x 4 Ohms
- Sensitivity: 90dB



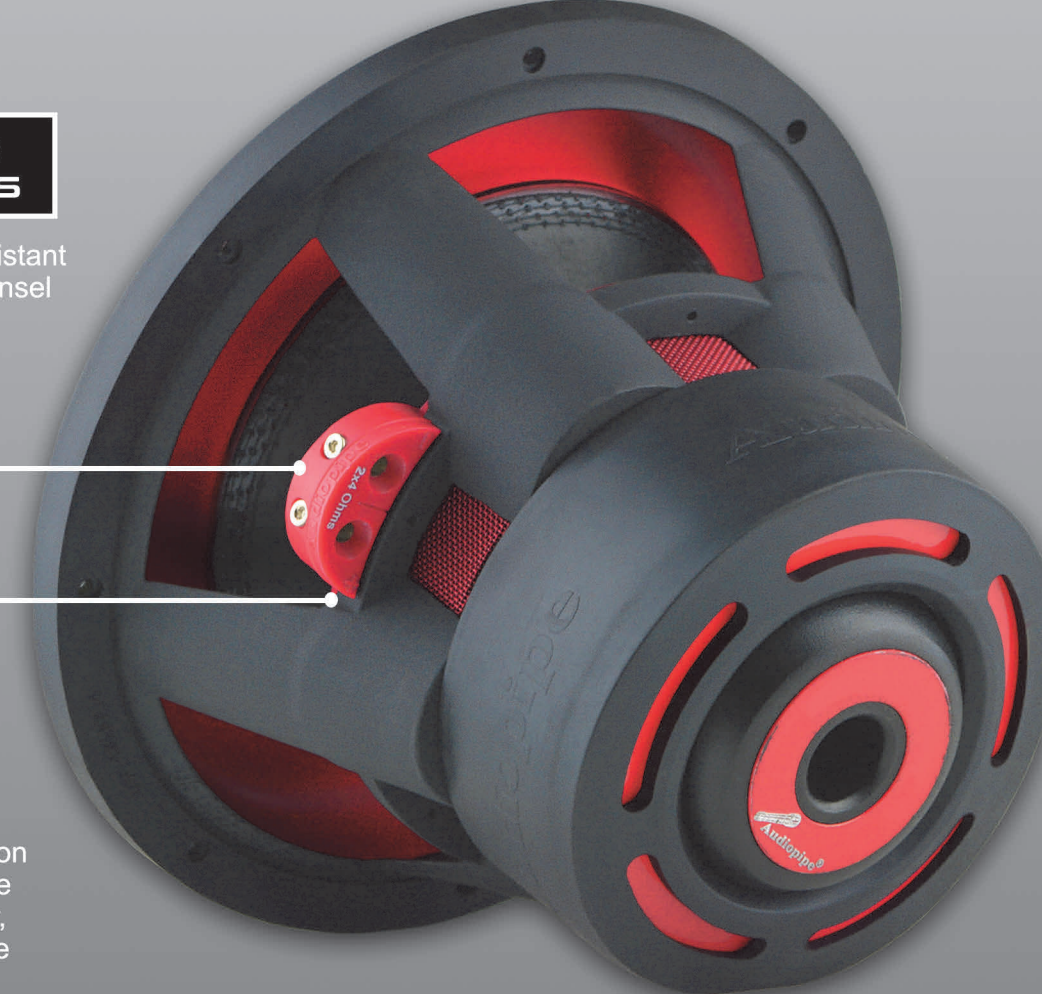
Silver Hinge Tinsel Leads

High temperature resistant braided silver hinge tinsel leads for maximum power handling.



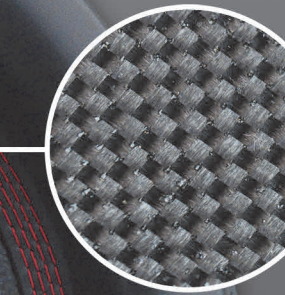
Total Excursion Control

Prevents over excursion damage enhancing the durability of the spider, surrounds, cones, glue joints, and coils, prolonging the life of the subwoofer.



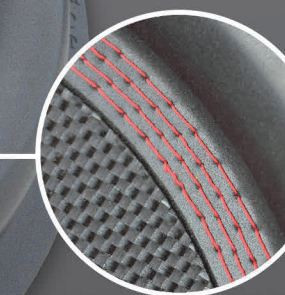
XL Foam Edge

Extra large foam edge allows for more range of movement preventing surround deterioration and prolonging the life of the rubber surround.



Fiberglass Cone Cap

Ultra light, highly rigid, and extremely damped, our fiberglass cone caps offer a controlled breakup, resulting in a smoother high end roll-off for a rich, natural and balanced sound.



Quad-Stitched

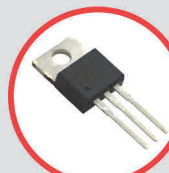
Quad-stitched surrounds finish off the robust design of our TXX-BDD subwoofers and provides enhanced durability.

APDLO AMPLIFIERS

The APDLO family of amplifiers is designed to portray a sexy, sleek image embodying power and sophistication. Utilizing the latest in MOSFET technology, an oversized double-dipped toroid this line provides a powerful punch yet maintaining its small footprint. This amplifier family is made specifically for our dealers and therefore are exclusively sold at brick-and-mortar stores and unavailable via the internet.

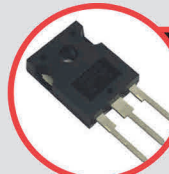


1 year warranty extension is available when the unit is purchased, installed, and registered by an Audiopipe authorized dealer



High Switching Power Transistors

Low power loss with increased performance



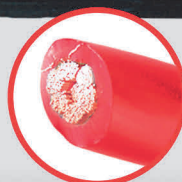
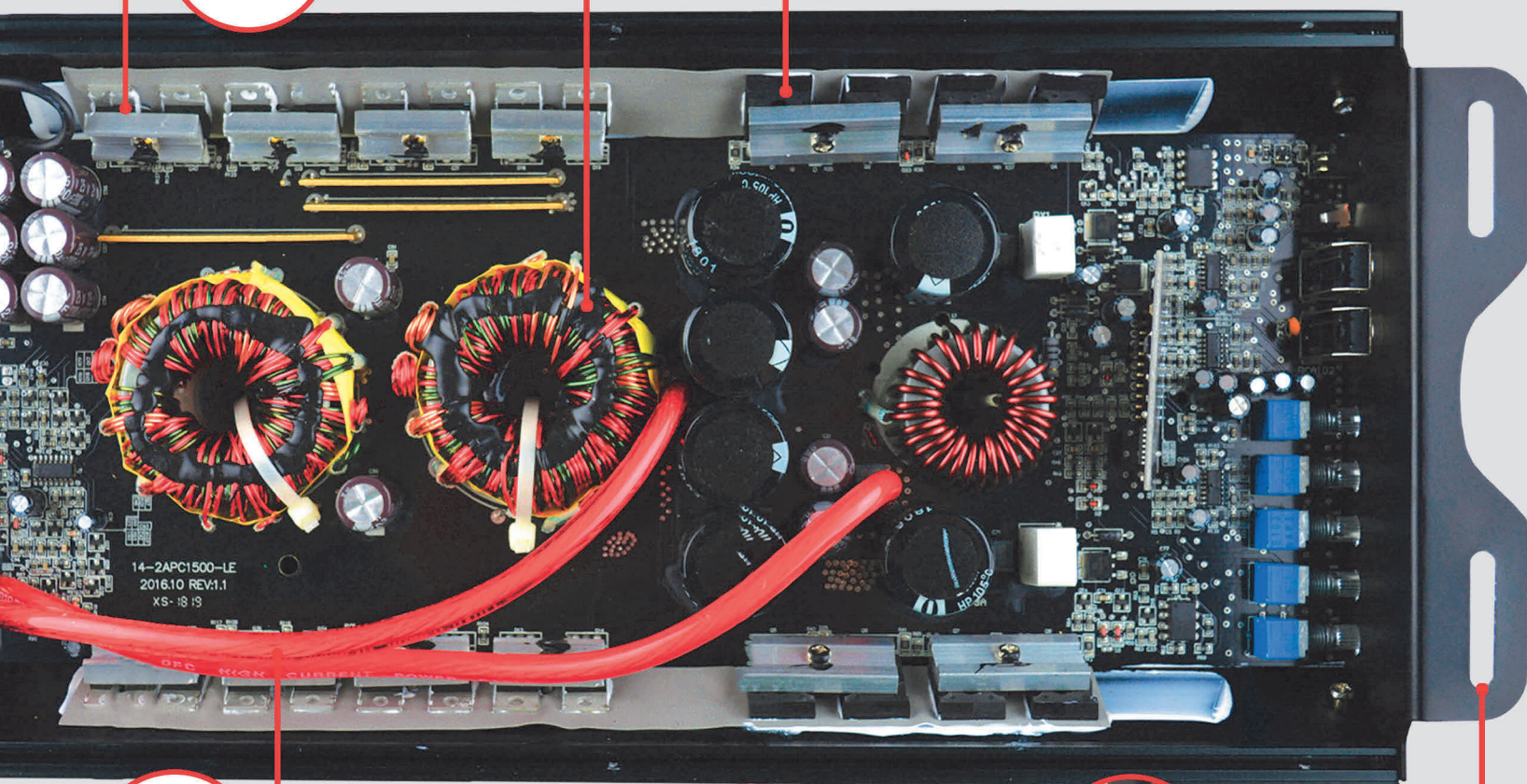
Oversized Audio Transistors

IRFP250N
High Fidelity Audio
Maximum switching while maintaining low temperature
Increased Performance



Oversized Torroids

Double Dip varnish
Zip tied & glued to PCB



Power Transfer

8 Gauge
100% Copper



Tiffany Jacks

Accepts metal head RCA locktight nuts



APDLO-2504

2100 Watts

4-Channel Class AB

Stereo 4 Ch-110W x 4@4Ω
Stereo 4 Ch-160W x 4@2Ω
Bridge 2 Ch-300W x 2@4Ω



APDLO-3502

1600 Watts

2-Channel Class AB

Stereo 2 Ch-160W x 2@4Ω
Stereo 2 Ch-325W x 2@2Ω
Bridge 1 Ch-450W x 1@4Ω



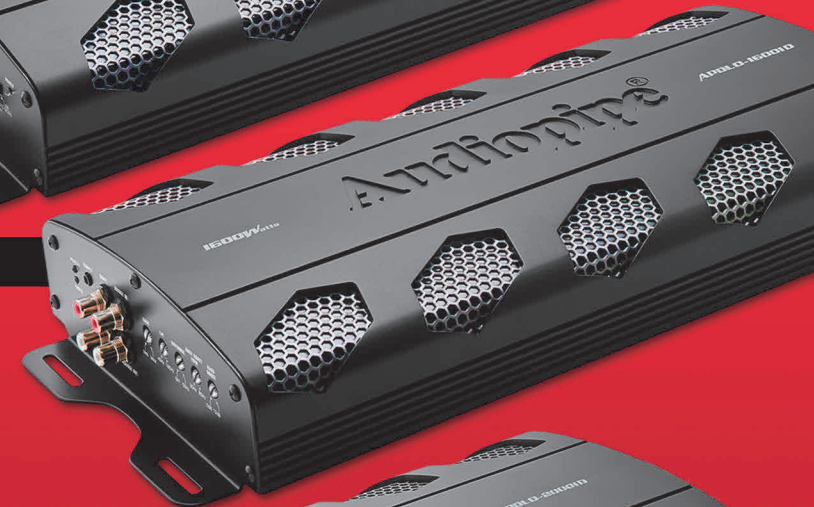
APDLO-16001D

1600 Watts

1-Channel Class D



WITH REMOTE BASS KNOB
1 Channel @ 4Ω - 650W
1 Channel @ 2Ω - 1000W
1 Channel @ 1Ω - 1600W



APDLO-20001D

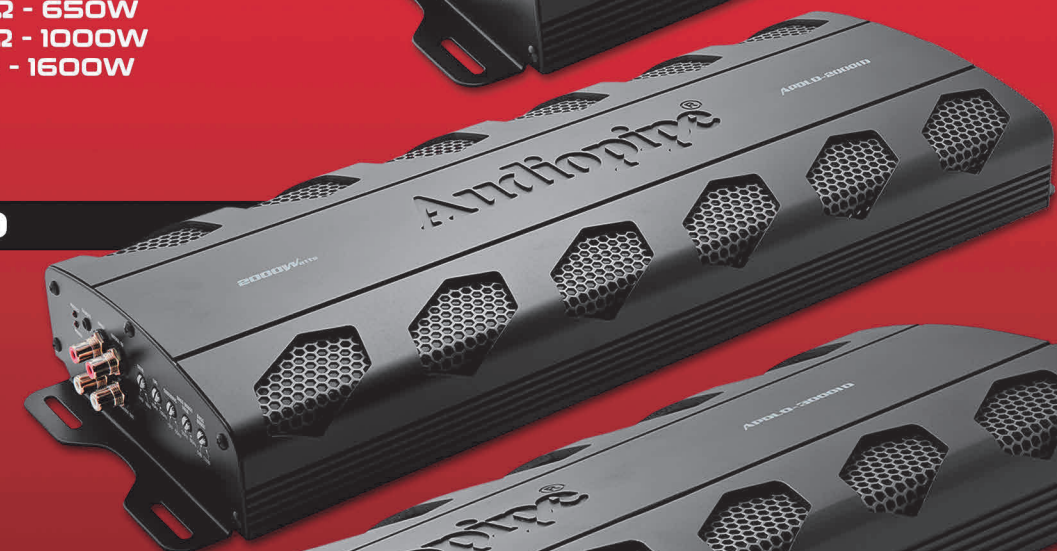
2000 Watts

1-Channel Class D

1 Channel @ 4Ω - 800W
1 Channel @ 2Ω - 1200W
1 Channel @ 1Ω - 2000W



WITH REMOTE BASS KNOB



APDLO-30001D

3000 Watts

1-Channel Class D

1 Channel @ 4Ω - 1000W
1 Channel @ 2Ω - 1500W
1 Channel @ 1Ω - 3000W



WITH REMOTE BASS KNOB



APHD AMPLIFIERS



Our APHD Full Bridge Class D amplifiers use two half-bridge stages to drive the load differentially, allowing them the advantage of achieving twice the output signal swing when compared to a half-bridge amplifier with the same supply voltage because the load is driven differentially. This results in a theoretical 4x increase in maximum output power over a half-bridge amplifier operating from the same supply. These full bridge amplifiers do away with the negative/ground terminal and places a second positive terminal in its place that emits an identical audio wave to the original positive terminal that is 180 degrees out of phase with it. This means that when the positive terminal swings to a positive voltage the negative terminal swings to a negative voltage, doubling the potential difference. The result is a highly efficient, powerful, and compact amplifier.

APHD-15001-F1

Full Bridge Class D Mono Amplifier

- RMS Power @ 1 Ohm: 1500W
- RMS Power @ 2 Ohm: 1150W
- RMS Power @ 4 Ohm: 900W
- Signal to Noise Ratio: 105Db
- Frequency Response: 15-20 KHz
- Total Harmonic Distortion: 1%
- Input Sensitivity Level: 0.2V
- Bass Boost Level: 12db
- Fuse: 100A
- With Remote Bass Knob
- With High and Low Pass Crossover, Gain, and Level controls
- Built-in Power, Clip, and Protect LED indicator

1500
WATT MAX **1**
OHM



Remote Bass Knob Included

ALSO AVAILABLE IN 2 OHM:

APHD-15001-F2

- RMS Power @ 2 Ohm: 1500W
- RMS Power @ 4 Ohm: 900W

1500
WATT MAX **2**
OHM



APHD-30001-F1

Full Bridge Class D Mono Amplifier

- RMS Power @ 1 Ohm: 3000W
- RMS Power @ 2 Ohm: 2000W
- RMS Power @ 4 Ohm: 1100W
- Signal to Noise Ratio: 105Db
- Frequency Response: 15-20 KHz
- Total Harmonic Distortion: 1%
- Input Sensitivity Level: 0.2V
- Bass Boost Level: 12db
- Current Draw: 235A
- With Remote Bass Knob
- With High and Low Pass Crossover, Gain, and Level controls
- Built-in Power, Clip, and Protect LED indicator

3000
WATT MAX **1**
OHM



Remote Bass Knob Included

ALSO AVAILABLE IN 2 OHM:

APHD-30001-F2

- RMS Power @ 2 Ohm: 3000W
- RMS Power @ 4 Ohm: 2000W

3000
WATT MAX **2**
OHM



APHD-50001-F1

Full Bridge Class D Mono Amplifier

- RMS Power @ 1 Ohm: 5000W
- RMS Power @ 2 Ohm: 3200W
- RMS Power @ 4 Ohm: 1850W
- Signal to Noise Ratio: 105Db
- Frequency Response: 15-20 KHz
- Total Harmonic Distortion: 1%
- Input Sensitivity Level: 0.2V
- Bass Boost Level: 12db
- Fuse: 400A
- With Remote Bass Knob
- With High and Low Pass Crossover, Gain, and Level controls
- Built-in Power, Clip, and Protect LED indicator

5000
WATT MAX **1**
OHM



Remote Bass Knob Included

APHD-80001-F1

Full Bridge Class D Mono Amplifier

- RMS Power @ 1 Ohm: 8000W
- RMS Power @ 2 Ohm: 5100W
- RMS Power @ 4 Ohm: 3050W
- Signal to Noise Ratio: 105Db
- Frequency Response: 15-20 KHz
- Total Harmonic Distortion: 1%
- Input Sensitivity Level: 0.2V
- Bass Boost Level: 12db
- With Remote Bass Knob
- With High and Low Pass Crossover, Gain, and Level controls
- Built-in Power, Clip, and Protect LED indicator

8000
WATT MAX **1**
OHM



Remote Bass Knob Included

APHD-160001-F1

Full Bridge Class D Mono Amplifier

- RMS Power @ 1 Ohm: 16000W
- RMS Power @ 2 Ohm: 12800W
- RMS Power @ 4 Ohm: 9000W
- Signal to Noise Ratio: 105Db
- Frequency Response: 15-20 KHz
- Total Harmonic Distortion: 1%
- Input Sensitivity Level: 0.2V
- Bass Boost Level: 12db
- With Remote Bass Knob
- With High and Low Pass Crossover, Gain, and Level controls
- Built-in Power, Clip, and Protect LED indicator

16000
WATT MAX **1**
OHM



Remote Bass Knob Included

APHD-6160-H2

6 Channel Full Range Class D Amplifier

- Output Power (RMS) @ 1% 1KHz 14.4V
Stereo @4 Ohms: 6 x 160W
Stereo @2 Ohms: 6 x 270W
Mono @4 Ohms: 3 x 550W
- Frequency Response (-1dB): 10Hz-25KHz
- Crossover Range High Pass: 20Hz-5KHz @12dB/OCT
- Crossover Range Low Pass: 50Hz-5KHz @12dB/OCT
- S/N Ratio (A WTG): >90dB
- Input Sensitivity: 0.2-6V
- Working Voltage: 9V-16V
- Protection System: Short into Output/Supply Voltage high/low/Thermal Protection
- Dimensions: (L 300 x W 209 x H 67mm)



Built-in Visual Status Monitor



Built-in Cooling Fan

3000
WATT MAX

APMN-2250

Mini Design 2 Channel Mosfet Amplifier

- RMS @ 4 Ohm (<1% DISTORTION): 2 x 215W
- RMS @ 2 Ohm (<1% DISTORTION): 2 x 420W
- RMS @ 1 Ohm (<1% DISTORTION): 2 x 625W
- Maximum Power Output: 1 x 1200W
- Frequency Response: 50Hz - 1.2KHz
- Signal to Noise Ratio: >80dB
- THD: <0.5%
- Minimum Load: 1 Ohm
- Dimensions (WxHxD): 6.3" x 2.1" x 13.8"



FULL RANGE CLASS D SYSTEM

2200
WATT MAX



REMOTE CONTROL BASS KNOB & FUSE HOLDER INCLUDED



IP67 rated: able to withstand immersion in water up to 1 meter for up to 30 minutes

APT-1000.4

4CH Full Range Class D Amplifier

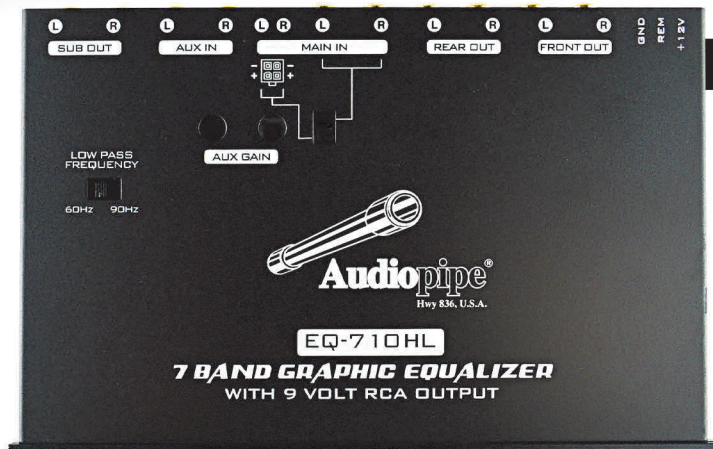
- Output Power (RMS): @1% 1KHz 14.4V
- Stereo @ 4 Ohms: 4 x 100W
- Stereo @ 2 Ohms: 2 x 150W
- Mono @ 4 Ohms: 2 x 280W
- Frequency Response (-3dB): 20Hz - 20KHz
- Signal to Noise Ratio: >90dB
- Input Sensitivity: 0.2V - 10V
- Working Voltage: 9V - 16V
- Waterproof Level: IP67



1000
WATT MAX



EQ-710HL



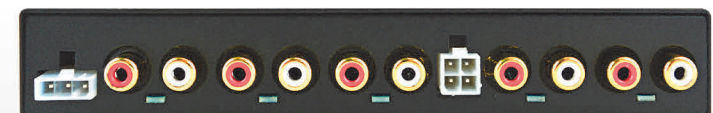
EQ-710HL

7 Band - 9V Line Driver Graphic Equalizer with Built-In Hi-Lo Converter

Take your music experience to the next level with this Audiopipe 7-Band 9 Volt Graphic Equalizer with built-in Hi-Lo Converter. It provides the ultimate adjustment and tuning control to get the most from your stereo. The EQ-710HL equalizer with 9V Line Drive provides optimum quality in a challenging automotive environment. With the use of the powerful sub-woofer and crossover controls you can overcome these obstacles. Fader and master volume knobs provide another way to adjust your system for ultimate quality. Auxiliary and main inputs can be switched with ease from the front panel for all your audio devices. The use of the adjustable input sensitivity on this 7-band equalizer allows you to match the levels for the right balance. It comes with gold-plated RCA connectors for a crystal-clear connection.

The Hi-Lo converter takes any speaker level stereo signal from any source and converts it to a perfect 7 Band 9 Volt line level, low distortion RCA output. Everything is automatic, this "plug and play" Hi-Lo converter is ideal for adding a subwoofer to your personal ride or a lease car without giving up factory features like steering wheel radio controls, navigation and hands-free phone use.

- Nickel Plated Locking Adjustable Knobs
- Adjustable Subwoofer Frequency: 60Hz/90Hz
- Universal Half-din Chassis for Ease of Installation
- Active Gain Pre-amplifiers with Adjustable Input Sensitivity
- Individual Left and Right Sensitivity Controls for Auxiliary Input
- 20dB Headroom Output and Level Controls
- Subwoofer Output and Level Connectors
- Gold-Plated RCA Input Connectors
- Three Stereo RCA Outputs
- Main / Auxiliary Input Selector



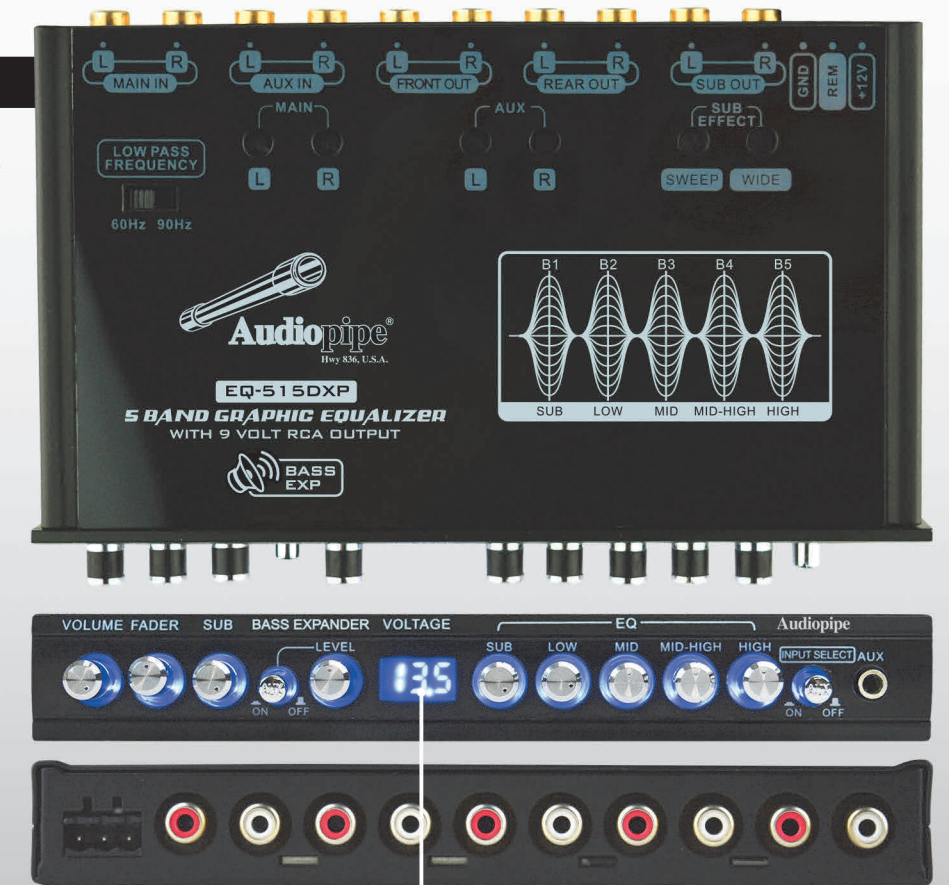
OEM Interfacing technology accommodates the benefits of having an aftermarket stereo system without removing your vehicle's dashboard. This allows for an easy "plug and play" interface with factory installed radios of any brand.

EQ-515DXP

5 Band - 8V Line Driver Stereo Equalizer with Built-In Volt Meter & LCD Voltage Display

Digital Bass Processor

- Nickel Plated Locking Adjustable Knobs
- Adjustable Active Gain Preamp
- 30V Bi-polar Switching Power Supply
- Subwoofer Output and Level Control
- 20dB Headroom Output and Level Controls
- 8 Volt Output Line Driver
- Operating Voltage 11V-15V Negative Ground
- Volt Meter & LCD Voltage Display
- Front AUX Input
- Gold-Plated RCA Input Connectors



With Volt Meter and LCD Voltage Display

SPLIT-3023LVL

10V Audio Signal Splitter

This unit accepts 3 RCA inputs from a head unit Front, Rear, and Subwoofer and provides 3 amplified outputs for each input; 3 front outputs, 3 rear outputs, 3 subwoofer outputs.

- Input Impedance: 47K Ohms
- Input Sensitivity: 260mV
- S/N Ratio: >95dB
- Output Level (10KHz)
- Output Impedance: 1K Ohms
- Channel Resolution: >60dB
- Harmonics Distortion: 0.009%
- Frequency Response: 20-20,000Hz
- Output Gain: 12dB



With Remote Bass Knob



Now includes Audio Line Level Control!





ADSP-CLEAN-4

1 In / 4 Out Digital Signal Processor

Achieve Complete audio customization for application specific installations with real-time signal processing for ultimate control. Increases sound quality through the use of optimized audio processing.

FEATURES

- Input and Output Processing
- 12 Band Graphic Equalizer
- Tone Generator
- Scroll Button for Simultaneous Adjustments
- 32-Bit Digital Audio Processor
- Precisely Define the Cutoff and Attenuation Frequencies

TECHNICAL SPECIFICATIONS

- Inputs: 1 RCA
- Outputs: 4 RCA
- Input Impedance: 10K
- Output Impedance: 47 Ohms
- Signal to Noise Ratio: >90dB
- Total Harmonic Distortion (THD): <0.01%
- Channel Separation: >80dB
- Frequency Response: 10Hz - 22,000Hz



ADSP-CLEAN-APP

1 In / 4 Out Digital Signal Processor with Wireless Remote Control

Achieve Complete audio customization for application specific installations with real-time signal processing for ultimate control. Increases sound quality through the use of optimized audio processing.

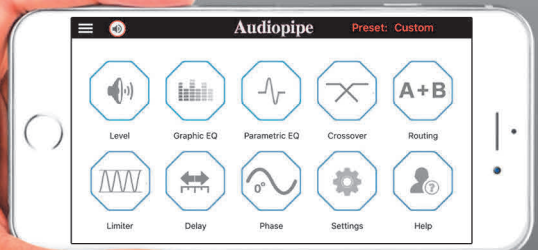
FEATURES

- (NEW) Measures real-time battery voltage at push of a button
- (NEW) Master mute function at the push of a button
- Input and Output Processing
- Tone Generator
- Scroll Button for Simultaneous Adjustments
- 32-Bit Digital Audio Processor
- Precisely Define the Cutoff and Attenuation Frequencies

TECHNICAL SPECIFICATIONS

- Inputs: 1 RCA
- Outputs: 4 RCA
- Input Impedance: 10K
- Output Impedance: 47 Ohms
- Signal to Noise Ratio: >90dB
- Total Harmonic Distortion (THD): <0.01%
- Channel Separation: >80dB
- Frequency Response: 10Hz - 22,000Hz

Now customizing your sound is even easier with the ADSP-CLEAN-APP phone application! This app allows the user to control their AUDIOPIPE DSP remotely when connected via wireless connection. No more fussing with small knobs, now you can tune each setting by number, allowing you to have complete precision signal processing.



Audiopipe DSP Mobile Application



ADSP-CLEAN-TSC

1 In / 6 Out Digital Signal Processor with Wireless Remote Control and Built-In Touchscreen Interface

Fine-tuning and perfecting your car audio sound quality is now easier than ever with our ADSP-CLEAN-TSC 6 Channel Digital Signal Processor. It's 6 inch touch screen digital interface allows for real-time signal processing for ultimate control right on the unit. In addition, you can also interface with the ADSP-CLEAN-TSC wirelessly through your phone via the AUDIOPIPE DSP mobile application.

FEATURES

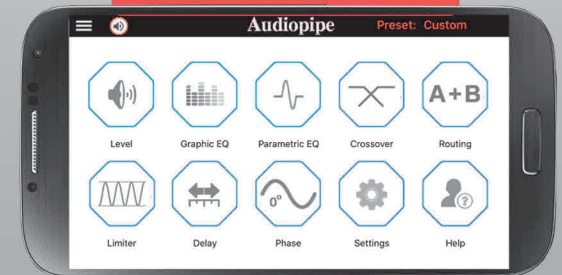
- 6 Inch High Definition LCD Touchscreen
- (NEW) Measures real-time battery voltage at push of a button
- (NEW) Master mute function at the push of a button
- Input and Output Processing
- Tone Generator
- 32-Bit Digital Audio Processor
- Precisely Define the Cutoff and Attenuation Frequencies

TECHNICAL SPECIFICATIONS

- Inputs: 1 RCA
- Outputs: 6 RCA
- Input Impedance: 10K
- Output Impedance: 47 Ohms
- Signal to Noise Ratio: >90dB
- Total Harmonic Distortion (THD): <0.01%
- Channel Separation: >80dB
- Frequency Response: 10Hz - 22,000Hz



Audiopipe DSP Mobile Application



XV-BXP-SUB

Digital Bass Processor

The XV-BXP-SUB Digital Bass Processor also known as a bass booster, has multiple adjustments which allow you to increase and fine tune the amount of bass in your sound system.

TECHNICAL SPECIFICATIONS

- Maximum Input Level: 15V RMS
- Maximum Output Level: 13.5V Peak
- Frequency Response: 0Hz-100KHz +/-1dB
- Total Harmonic Distortion: 0.003%
- Signal to Noise Ratio: -130dB
- Balanced Input Noise Rejection: >60dB
- Input Impedance: 10 Kohm
- Output Impedance: 150 Ohms
- Power Supply: High headroom PWM
- Power draw: 150mA
- Recommend fuse rating: 3 Amp



Remote Bass Level Knob allows you to easily increase or decrease the amount of bass you want.



TXX-BDC4-8

8" Quad-Stack Composite Cone Subwoofer

- 1000 Watts Powers (P.M.P.O)
- 500 Watts Power (R.M.S)
- Frequency Response: 35~1,200Hz
- Sensitivity: 85dB
- 2.5" 4-Layer Kapton Voice Coil BASV
- Powdered Black Paint Aluminum Basket
- Silver Push Spring Loaded Terminals
- Diameter: 8-3/4" (222mm)
- Mounting Depth: 5-7/8 (148mm)
- Impedance: 2 x 4 Ohms
- 150 Oz Magnet

1000
WATT MAX



DUAL
4Ω

TXX-BDC3-8

8" Triple-Stack Composite Cone Subwoofer

- 500 Watts Power (P.M.P.O)
- 250 Watts Power (R.M.S)
- Frequency Response: 35~1,500Hz
- Sensitivity: 85dB
- 2" 4-Layer Voice Coil BASV
- Powdered Black Paint Aluminum Basket
- Potent Pipe Multi-connect Terminals
- Diameter: 8.5" (210mm)
- Mounting Depth: 5" (125mm)
- Impedance: 2 x 4 Ohms
- 96 Oz Magnet

500
WATT MAX



DUAL
4Ω

APLM-10

10" Pro Audio Woofer

- 1000 Watts Power (P.M.P.O.)
- 500 Watts Power(R.M.S.)
- Frequency Response:60-7,000Hz
- Sensitivity:95dB
- 3" TIL Voice Coil
- Die-cast Aluminum Basket
- Mounting Depth: 105mm (4-1/8")
- Impedance: 8 Ohms
- 75 Oz Magnet

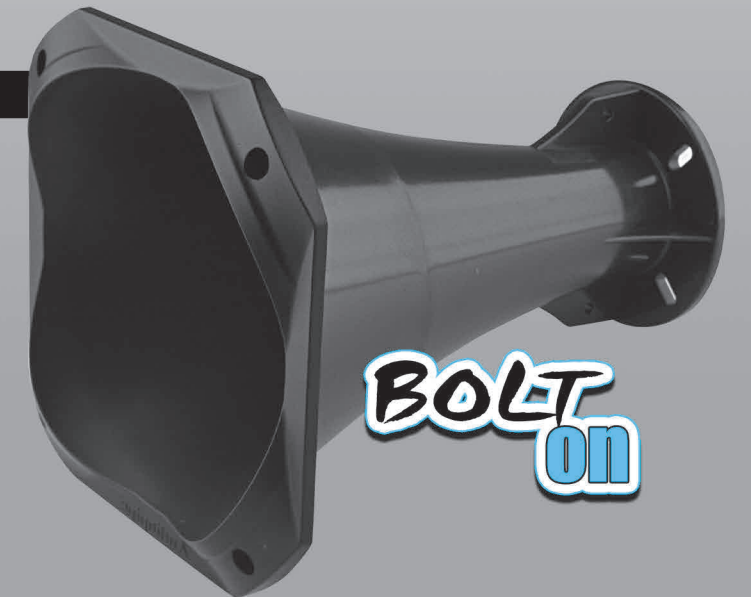
1000
WATT MAX



APH-85112B0-H

High Frequency Horn

- High Frequency Horn
- ABS Horn
- Exit Throat Size: 2"
- Bolt-on Fitting
- Overall Dimensions: 8.5"(H) x 8.5" (W) x 11.2" (D)
- Mounting Depth: 10.4"



BOLT
ON

ACAP-10000

10 Farad Power Capacitor

The ACAP-10000 is designed specifically for high-powered systems. Being that it is a true 10 farad capacitor you know you're getting optimal performance. You will notice improvements in your bass response (SPL), help increase the peak power of your amp and help stabilize the voltage of your system.

TECHNICAL SPECIFICATIONS

- VDC: 20V Max. 24V Surge
- ESR.: 0.002 Ω or less
- Terminals: M6 Thread
- Digital Display & Status Indicator
- Digital Electronic Protection
- Digital Display & Status Indicator 10 Farad



With LED
Voltage
Display

10 FARAD **20** VOLT MAX **24** VOLT SURGE

SLIM NEO SERIES LOUDSPEAKERS

The Slim Neodymium Series loudspeakers use a super powered Neodymium magnet that allows for high-power handling. The super flat mounting depth makes them ideal for shallow-depth installations. Regardless of size, we guarantee quality and sound to be at an all-time high when using our Slim Neo loudspeakers.

**NEODYMIUM
magnet
Speaker Series**

APMB-400IND

4" Low Mid Frequency Loudspeaker

- 100 Watts Power (P.M.P.O.)
- 50 Watts (R.M.S.)
- Frequency Response: 120Hz - 16kHz
- Sensitivity: 89dB
- 1" KSV Voice Coil
- Powdered Black Steel Basket
- Mounting Depth: 1-3/4"
- Impedance: 8 Ohm
- Neodymium Magnet
- High Frequency Enhancing Bullet

1-3/4"
MOUNTING
DEPTH

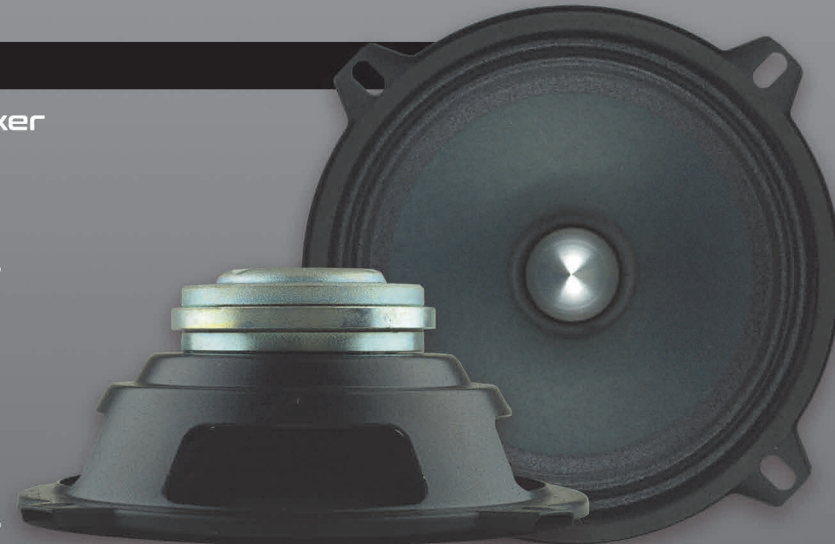


APMB-525IND

5.25" Low Mid Frequency Loudspeaker

- 120 Watts Power (P.M.P.O.)
- 60 Watts (R.M.S.)
- Frequency Response: 100Hz - 15kHz
- Sensitivity: 91dB
- 1" KSV Voice Coil
- Powdered Black Steel Basket
- Mounting Depth: 2"
- Impedance: 8 Ohm
- Neodymium Magnet
- High Frequency Enhancing Bullet

2"
MOUNTING
DEPTH



APMB-690IND

6" x 9" Low Mid Frequency Loudspeaker

- 300 Watts Power (P.M.P.O.)
- 150 Watts (R.M.S.)
- Frequency Response: 70Hz - 12kHz
- Sensitivity: 92dB
- 1.5" KSV Voice Coil
- Powdered Black Steel Basket
- Mounting Depth: 3-3/16"
- Impedance: 8 Ohm
- Neodymium Magnet
- High Frequency Enhancing Bullet

3-3/16"
MOUNTING
DEPTH



CPL-650FL

6.5" Midrange Super Flat Component Set

- Voice Coil: 1" KSV
- Magnet: 245 x 6mm Neodymium Magnet Structure
- Nominal Impedance: 4 Ohms
- Resonant Frequency: 70Hz ± 20%
- Frequency Response: 70Hz ± 20kHz
- Sensitivity: 86dB ± 2dB
- Mounting Depth: 1-1/16"
- 2" Titanium Tweeter
- 2-Way Crossover
- Power Handling RMS: 50 Watts
- Power Handling Peak: 100 Watts
- Sold in pairs

**NEODYMIUM
magnet
Speaker Series**



SHALLOW MOUNT

These super flat speakers feature a special aluminum heat sink / neodymium magnet on top of the speaker to help dissipate extra heat, helping to keep the voice coils cooler for extended playing time! They deliver clean, high output and will fit into most any restricted spaces courtesy of their high powered neodymium magnet assembly and low profile mounting for any limited space restrictions!

CPL-1502

5.25" 2-Way Car Speaker

- 5.25" Injection Cone with Rubber Edge
- 30mm PEI Tweeter
- 1" ASV Coil
- 2 - 4 Ohm Impedance
- 60 Watt Max Power
- Frequency Response: 85Hz - 20KHz
- Sensitivity: 87dB ± 2dB
- Mounting Depth: 2-1/4"
- Sold in pairs



CPL-700

7" Low Mid Frequency Speaker

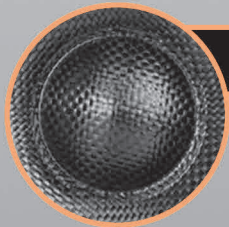
- Voice Coil: 1" KSV
- Magnet: 16 Oz Ferrite Magnet
- Nominal Impedance: 2 Ohms
- Resonant Frequency: 50Hz ± 20%
- Frequency Response: 50Hz ~ 5.5KHz
- Sensitivity: 88dB ± 2dB
- Mounting Depth: 2-3/8" (60mm)
- Power Handling RMS: 100w
- Power Handling Peak: 200W
- Sold in pairs



APMP LOUDSPEAKERS

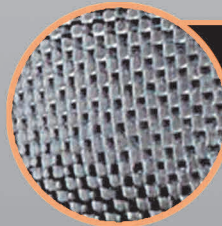


This diverse family of loudspeakers consists of our Flat, Component, and Compression Horn series of APMP models. Each of these series of APMP loudspeakers adds unique features to our dynamic APMP loudspeaker making them some of our most unique and adaptable loudspeakers to date. Every APMP model features a super tough carbon fiber cone allowing for superior crystal clear sound. The durability and water repelling features of the carbon fiber cone make these loudspeakers ideal for convertibles or all-terrain vehicles. Every APMP loudspeaker is built with our exclusive liquid metal plastic - strong as steel basket, for a robust loudspeaker that can withstand any abuse. Each speaker comes with a set of white and titanium interchangeable speaker grills allowing you to customize them to your car or boat.



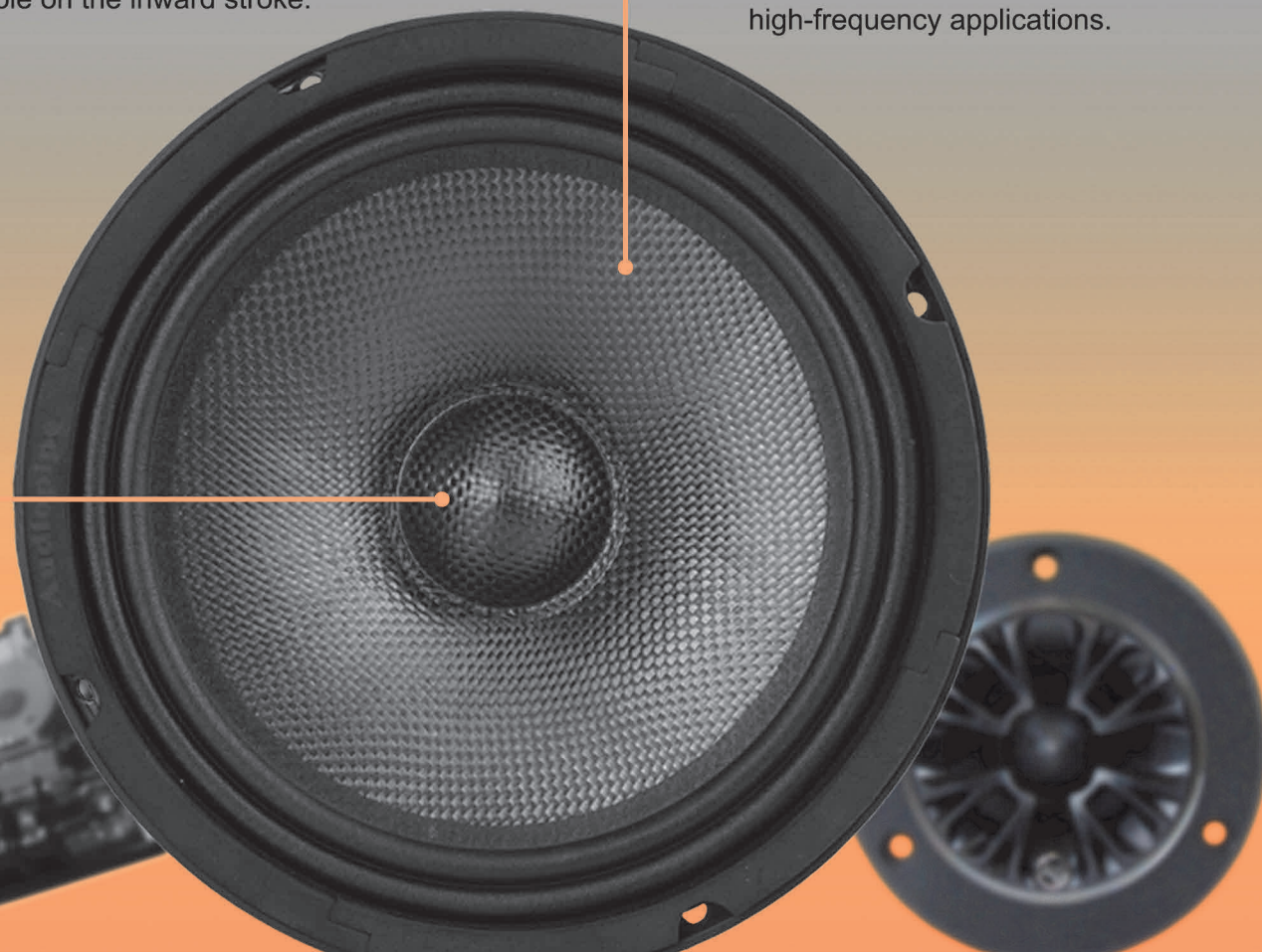
Dome-Type Dust Cap

Our dome-type dust caps' unique shape extend and enhance the high frequencies produced by these loudspeakers making for an improved and well-rounded sound quality. These dust caps are also used to shield the gap from debris and to also provide a seal for cooling the voice coil via pushing air back over/around the pole on the inward stroke.



Carbon Fiber Cone

Carbon fiber cones allow for moisture and temperature resistance, while it's rigidness prevents cone flex when driven hard. The combination of ultralight weight, high stiffness, and controlled breakup behavior provides immediate benefits for mid- to high-frequency applications.



*Tweeter & crossover not included

APMP-620CF

6" Enhanced High Frequency Loudspeaker

- 250 Watts Power (P.M.P.O.)
- 125 Watts Power (R.M.S.)
- Frequency Response: 50-10000 Hz
- Sensitivity: 90 dB
- 1.5" TIL Voice Coil
- Liquid Metal Plastic Strong as Steel Basket
- Mounting Depth: 81mm (3-1/4")
- Impedance: 4 Ohms
- 21oz Magnet

TITANIUM & WHITE GRILLS INCLUDED



6"

APMP-838CF

8" Enhanced High Frequency Loudspeaker

- 500 Watts Power (P.M.P.O.)
- 250 Watts Power (R.M.S.)
- Frequency Response: 45 - 10,000Hz
- Sensitivity: 92dB
- 1.5" TIL Voice Coil
- Liquid Metal Plastic Strong as Steel Basket
- Mounting Depth: 98mm (3-7/8")
- Impedance: 4 Ohms
- 38 Oz Magnet

TITANIUM & WHITE GRILLS INCLUDED

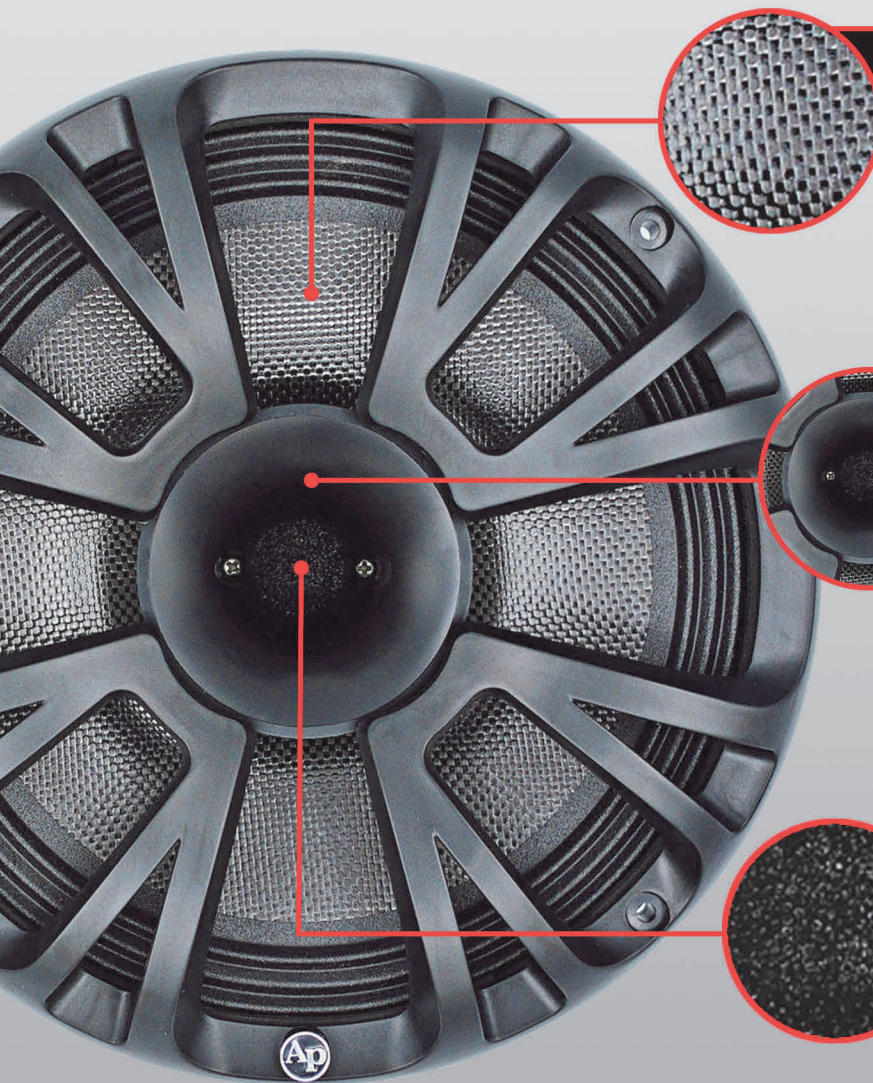


8"

COMPONENT SERIES

Our Component Series APMP Loudspeakers were crafted to be combined with our tweeters and crossovers to create the ultimate audio listening experience in your vehicle. Installing these component speakers in your craft gives you a sound that has better tonal clarity, better sound stage, and better imaging. Combine this performance quality with the rugged and durable build of these APMP speakers and you get amazing sound for virtually any outdoor terrain.





Carbon Fiber Cone

Carbon fiber cones allow for moisture and temperature resistance, while its rigidity prevents cone flex when driven hard. The combination of ultralight weight, high stiffness, and controlled breakup behavior provides immediate benefits for mid- to high-frequency applications.

Built-in Compression Horn Driver

Our built-in compression horn drivers produce dynamics far better than most dome tweeters. The shape/size of the horn has a tremendous impact on the sound quality. They are highly efficient in translating electrical input into sounds, from low levels to insanely loud that gives a better representation of realism.

Dust-proof Acoustic Foam

We added a layer of acoustic foam in the horn throat as another way to protect these loudspeakers from the elements. This layer of acoustic foam prevents dust from entering through the horn throat and damaging the compression driver making this speaker ideal for off-roading and all-terrain vehicles while maintaining sound quality and performance.

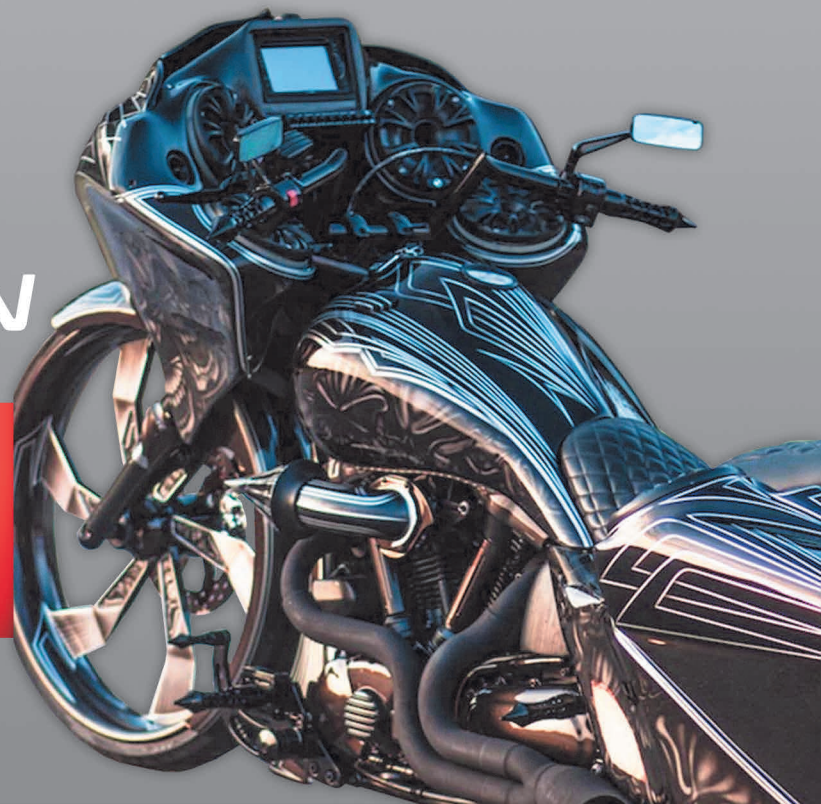


Includes Driver Crossover Network

The crossover network divides an audio signal into multiple frequency bands. This is done to optimize which frequencies are directed to multiple speaker drivers. Splitting the frequency range up into multiple bands with a crossover, each dedicated to their own driver, allows the speaker to more efficiently reproduce full-range audio with better fidelity.

COMPRESSION HORN SERIES

Our APMP Compression Horn Midrange Loudspeakers are not like our regular midrange speakers due to the built-in compression horn. Not only do you get superb lows and midranges but you're also going to get that high end vocal sound that you would get out of a tweeter.



APMP-623CHF

6"

6" Compression Horn Midrange Loudspeaker

- 250 Watts Power (P.M.P.O)
- 125 Watts Power (R.M.S)
- Frequency Response: 95-20,000Hz
- Sensitivity: 92dB
- 1.5" Kapton Voice Coil
- Reinforced Cloth Surround with Carbon Fiber Cone
- Liquid Metal Plastic Strong as Steel Basket
- Mounting Depth: 75mm (3")
- 2.5" Horn Loaded Compression Driver
- 12dB OCT. Separated Crossover
- Impedance: 4 Ohms
- 23 Oz Magnet



Driver Crossover Network Included



APMP-68CHF VC
Replacement Coil for APMP-623CHF

APMP-843CHF

8"

8" Compression Horn Midrange Loudspeaker

- 300 Watts Power (P.M.P.O)
- 150 Watts Power (R.M.S)
- Frequency Response: 80-20,000Hz
- Sensitivity: 95dB
- 1.5" Kapton Voice Coil
- Reinforced Cloth Surround with Carbon Fiber Cone
- Liquid Metal Plastic Strong as Steel Basket
- Mounting Depth: 89mm (3-1/2")
- 2.5" Horn Loaded Compression Driver
- 12dB OCT. Separated Crossover
- Impedance: 4 Ohms
- 43 Oz Magnet



Driver Crossover Network Included



APMP-68CHF VC
Replacement Coil for APMP-843CHF

APMP-1043CHF

10"

10" Compression Horn Midrange Loudspeaker

- 400 Watts Power (P.M.P.O.)
- 200 Watts Power (R.M.S.)
- Frequency Response: 55-20,000Hz
- Sensitivity: 92dB
- 2" Kapton Voice Coil
- Reinforced Cloth Surround with Carbon Fiber Cone
- Liquid Metal Plastic Strong as Steel Basket
- Mounting Depth: 102mm (4")
- 3.5" Horn Loaded Compression Driver
- 12dB OCT. Separated Crossover
- Impedance: 4 Ohms
- 40 Oz Magnet



Driver Crossover Network Included

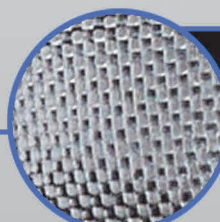
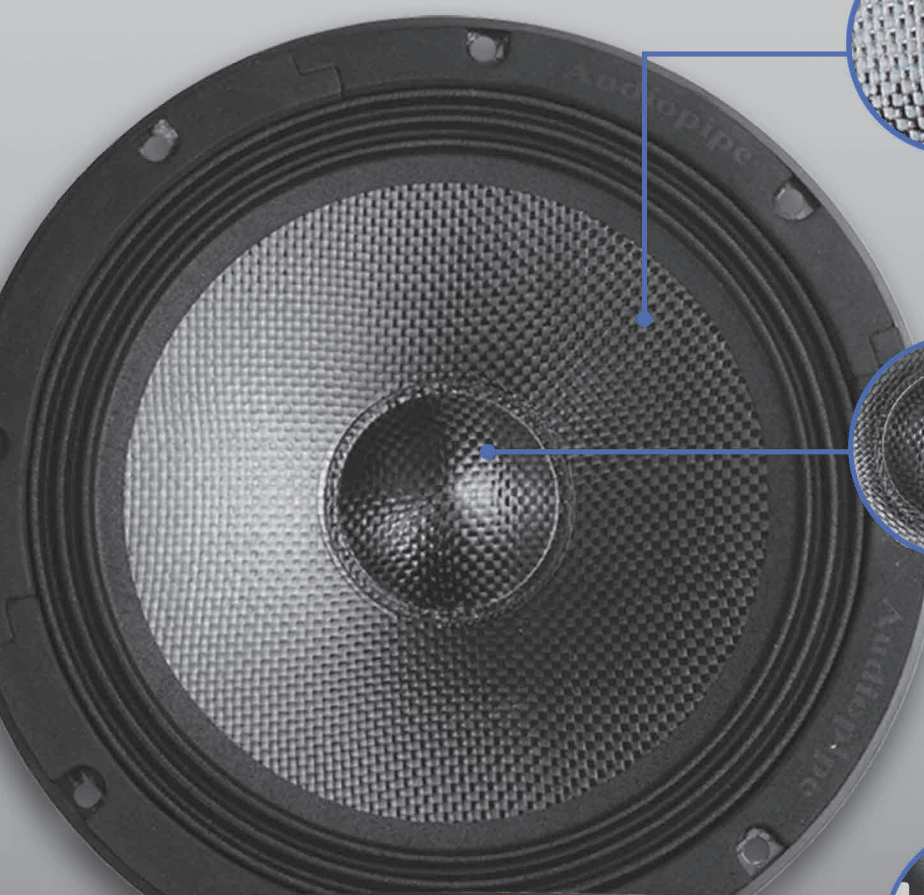


APMP-1043CHF VC
Replacement Coil for APMP-1043CHF



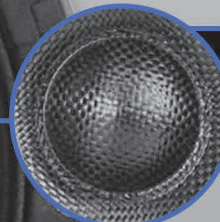
FLAT SERIES

We engineered our Flat Series APMP Loudspeakers to be all you need in a mid-range pro audio speaker; delivering incredible sound, loudness, and reliability, all in an extremely shallow and versatile footprint. The shallow baskets allow for installations in applications where limited mounting depth is available.



Carbon Fiber Cone

Carbon fiber cones allow for moisture and temperature resistance, while it's rigidness prevents cone flex when driven hard. The combination of ultralight weight, high stiffness, and controlled breakup behavior provides immediate benefits for mid- to high-frequency applications.



Dome-Type Dust Cap

Our dome-type dust caps' unique shape extend and enhance the high frequencies produced by these loudspeakers making for an improved and well-rounded sound quality. These dust caps are also used to shield the gap from debris and to also provide a seal for cooling the voice coil via pushing air back over/around the pole on the inward stroke.



Shallow Mounting Depth

The cutting-edge "liquid metal plastic" shallow baskets provide an ideal mounting depth which allows for installations in applications where limited mounting depth is available.



APMP-618CFF

6" Enhanced High Frequency Loudspeaker

- 250 Watts Power (P.M.P.O)
- 125 Watts Power (R.M.S)
- Frequency Response: 75-10,000Hz
- Sensitivity: 90dB
- 1.5" TIL Voice Coil
- Liquid Metal Plastic Strong as Steel Basket
- Mounting Depth: 55mm (2-3/16")
- Impedance: 4 Ohms
- 18 Oz Magnet

2-3/16"
MOUNTING DEPTH



TITANIUM & WHITE GRILLS INCLUDED



6"

APMP-834CFF

8" Enhanced High Frequency Loudspeaker

- 300 Watts Power (P.M.P.O)
- 150 Watts Power (R.M.S)
- Frequency Response: 70-9,000Hz
- Sensitivity: 90dB
- 1.5" TIL Voice Coil
- Liquid Metal Plastic Strong as Steel Basket
- Mounting Depth: 64mm (2-1/2")
- Impedance: 4 Ohms
- 34 Oz Magnet

2-1/2"
MOUNTING DEPTH



TITANIUM & WHITE GRILLS INCLUDED



8"

APMP-1044CFF

10" Enhanced High Frequency Loudspeaker

- 400 Watts Power (P.M.P.O.)
- 200 Watts Power (R.M.S.)
- Frequency Response: 40-4,000 Hz
- Sensitivity: 92dB
- 2" Kapton Voice Coil
- Liquid Metal Plastic Strong as Steel Basket
- Mounting Depth: 3-7/16"
- Impedance: 4 Ohms
- 40 Oz Magnet

3-7/16"
MOUNTING DEPTH



TITANIUM & WHITE GRILLS INCLUDED



10"

APHI-FA4K

12 Foot 4K HDMI Cable

- High Speed 18 Gbps, allows for unrestricted video in 4K 2160p(UHD) 1440p (QHD) and 1080p (HD).
- Strong Braided Cord with a bending life of 15000+
- Made with strong zinc-alloy housing and tangle-free nylon braided coat for strong durability.
- 24K gold-plated connectors.
- Can be widely compatible with PS5/PS4/PS3, Xbox One/Xbox 360, 4K TV, Blu-ray Player, computer, projector, monitor and display.



AIQ-USBT3C-3BW

3ft High Speed Data Transfer USB 3.0 Type C Cable

- High Speed Data Transfer/Sync
- 3ft Length
- Metallic Compact Head
- Braided Cable
- Color: Black
- Compatible with tablets and smartphones with a USB Type-C connector including new MacBook, Samsung Galaxy S10/ S10+/ S9/ S9+/ S8/S8+/ Note 9/ Note 8, Google Pixel 2/ Pixel 2 XL, LG G5/ G6, Nintendo Switch and other USB C devices
- Hi-speed USB-C Male to Standard Type A USB Data sync, charging, video, audio 4in1 cable.



AIQ-USBT3C-10BW

10ft High Speed Data Transfer USB 3.0 Type C Cable

- High Speed Data Transfer/Sync
- 10ft Length
- Metallic Compact Head
- Braided Cable
- Color: Black
- Compatible with tablets and smartphones with a USB Type-C connector including new MacBook, Samsung Galaxy S10/ S10+/ S9/ S9+/ S8/S8+/ Note 9/ Note 8, Google Pixel 2/ Pixel 2 XL, LG G5/ G6, Nintendo Switch and other USB C devices
- Hi-speed USB-C Male to Standard Type A USB Data sync, charging, video, audio 4in1 cable.



COPPER PRIMARY WIRES

TPW-OCPR-100B

0 AWG - 100FT Copper Primary Wire

- 0 Gauge
- 100 FT Roll
- Color: Black
- 0 gauge general purpose primary wire in 100 foot spool
- Ideal for trucks, automobiles, trailers, tractors, utility vehicles, RVs, buses, boats & more
- Full AWG sized copper conductor made from 99.9% pure annealed electrolytic copper, will you get maximum power.



TPW-OCPR-25B

0 AWG - 25FT Copper Primary Wire

- 0 Gauge
- 25 FT Roll
- Color: Black
- 0 gauge general purpose primary wire in 100 foot spool

TPW-4CPR-100B

4 AWG - 100FT Copper Primary Wire

- 4 Gauge
- 100 FT Roll
- Color: Black
- 4 gauge general purpose primary wire in 100 foot spool

TPW-8CPR-100B

8 AWG - 100FT Copper Primary Wire

- 8 Gauge
- 100 FT Roll
- Color: Black
- 8 gauge general purpose primary wire in 100 foot spool

TPW-OCPR-100R

0 AWG - 100FT Copper Primary Wire

- 0 Gauge
- 100 FT Roll
- Color: Red
- 0 gauge general purpose primary wire in 100 foot spool
- Ideal for trucks, automobiles, trailers, tractors, utility vehicles, RVs, buses, boats & more
- Full AWG sized copper conductor made from 99.9% pure annealed electrolytic copper, will you get maximum power.



TPW-OCPR-25R

0 AWG - 25FT Copper Primary Wire

- 0 Gauge
- 25 FT Roll
- Color: Red
- 0 gauge general purpose primary wire in 100 foot spool

TPW-4CPR-100R

4 AWG - 100FT Copper Primary Wire

- 4 Gauge
- 100 FT Roll
- Color: Red
- 4 gauge general purpose primary wire in 100 foot spool

TPW-8CPR-100R

8 AWG - 100FT Copper Primary Wire

- 8 Gauge
- 100 FT Roll
- Color: Red
- 8 gauge general purpose primary wire in 100 foot spool

AP-CHU-82

Chuchero Dual Loaded 8" Speaker Sub Box Enclosure with Speakon Cable

Due to popular demand, we created an 8" version of our chuchero dual loaded 10" speaker sub box enclosure. We loaded it with two 8-inch midrange loudspeakers that deliver high-performance midrange audio. The loudspeakers are sealed in an enclosure constructed of high-quality MDF with high-density carpet that protects the speakers and maintains the direction of your sound. The AP-CHU-82 features 4.5-inch titanium drivers and 2-inch voice coils that deliver sound at 8 ohms.

- 500 Watts Max.
- High Quality MDF Construction
- Covered with Durable High Density Carpet
- 2 x 8" Midrange Speakers
- 2 x 4.5" Titanium Driver
- 2" KSV Voice Coil
- 35 Oz. Strontium Magnet
- 8 Ohms Mono
- Dimensions: 24" x 5.9" x 10.6"



Speakon cable included

APSB-12112PX

Super Bass Combo Package - Single 12" High-Performance Compact Sealed Enclosure

The new APSB-X12112PX Super Bass Combo Package includes a loaded single 12" subwoofer enclosure, a Micro Class D Mosfet amplifier, and an Amplifier Installation Kit. This is the perfect enclosure for those looking to pack a lot of power in a limited space.

TX-PX-1250 12" Subwoofer

- 800 Watts Power (P.M.P.O.)
- 400 Watts Power (R.M.S.)
- Frequency Response: 30-1,400Hz
- 2" 4-Layer Kapton Voice Coil
- Rigid Steel Basket
- PP Cone with Rubber Surround
- Impedance: Dual 4 Ohms
- 44 Oz Magnet

APMCRO-1500 Micro Class D MOSFET Amplifier

RMS @ 1 Ohm (<1% Dist.)	576 W
RMS @ 2 Ohm (<2% Dist.)	364 W
RMS @ 4 Ohm (<1% Dist.)	189 W
S/N Ratio	> 80dB
Frequency Response	15 Hz ~ 250 kHz
THD (All Channels Driven)	< 0.5%
Input Sensitivity Lever	180 V ~ 6 V
Bass Boost Level	0 ~15dB
LPF	50 Hz ~ 250 Hz
Subsonic Filter	10 Hz ~ 50 Hz
Dimension (L x W x H)	6.77 x 4.74 x 1.7"
Current Draw	52 A
Components & PCB	SMT & Double Side Board
PCB Size	6.73 x 3.9 x 0.06"

BMS-7505X Amplifier Installation Kit

- 17 Ft. 2 RCA Plugs to 2 RCA Plugs with Signal Wire
- 17 Ft. 10 AWG Red Primary Wire
- 3 Ft. 10 AWG Black Primary Wire
- 30 Amp AGU Fuse & 10 AGU Fuse Holder
- Gold Ring Terminal Red & Black Color
- Gold Plated Spade Terminal Red & Black Color
- Butt Splices 2Pcs
- 10 Assorted Cable Ties & 3 Ft. Split Loom Tubing



APSB-12212PX

Super Bass Combo Package - Double 12" High-Performance Compact Sealed Enclosure

The new APSB-X12212PX Super Bass Combo Package includes a loaded double 12" subwoofer enclosure, a Micro Class D Mosfet amplifier, and an Amplifier Installation Kit. This is the perfect enclosure for those looking to pack a lot of power in a limited space.

TX-PX-1250 (2X) 12" Subwoofer

- 800 Watts Power (P.M.P.O.)
- 400 Watts Power (R.M.S.)
- Frequency Response: 30-1,400Hz
- 2" 4-Layer Kapton Voice Coil
- Rigid Steel Basket
- PP Cone with Rubber Surround
- Impedance: Dual 4 Ohms
- 44 Oz Magnet

APMCRO-1800 Micro Class D MOSFET Amplifier

RMS @ 1 Ohm (<1% Dist.)	756 W
RMS @ 2 Ohm (<2% Dist.)	496 W
RMS @ 4 Ohm (<1% Dist.)	289 W
S/N Ratio	> 80dB
Frequency Response	15 Hz ~ 250 kHz
THD (All Channels Driven)	< 0.5%
Input Sensitivity Lever	180 V ~ 6 V
Bass Boost Level	0 ~15dB
LPF	50 Hz ~ 250 Hz
Subsonic Filter	10 Hz ~ 50 Hz
Dimension (L x W x H)	9x 14.7 x 1.7"
Current Draw	69 A
Components & PCB	SMT & Double Side Board
PCB Size	8 9/10" x 3 9/10" x 0. 3/50"

BMS-15005X Amplifier Installation Kit

- 17 Ft. 2 RCA Plugs to 2 RCA Plugs with Signal Wire
- 17 Ft. 8 AWG Red Primary Wire
- 3 Ft. 8 AWG Black Primary Wire
- 60 Amp AGU Fuse
- 25 Ft. 18 AWG Speaker Wire
- 8 AWG Fuse Holder
- Gold Ring Terminal Red Color
- Gold Ring Terminal Black Color
- Gold Plated Spade Terminal Black Color
- Gold Plated Spade Terminal Red Color



Ap[®] MARINE SALT WATER SERIES



APSU-6000BTU

3" Multimedia Marine Headunit with High Definition Positive LCD Display

The APSU-6000BTU is a multimedia marine headunit with a 3" bright white LED illuminated LCD display for optimum viewing, even in full sun. This compact unit is easily mounted in a 3" round mounting hole and is IP66 rated and element proof to protect against dust, UV, temperature, water, corrosion & vibration.

- Radio (AM/FM)
- 18FM / 12AM Presets
- Wireless Music Streaming
- MP3 & WMA music playback
- USB cell phone charging
- 3" High Definition LCD Display (Segment Type)
- Bass/Treble/Balance/Fader
- Waterproof: IP66 rated
- Waterproof Male + Female Wireharness for installation
- UV coated for both black trim ring + black panel



A rating of IP66 means that the product is fully protected against dust and solid objects. Moreover, the product is protected against powerful water jets projected by a nozzle (12.5mm) from any directions.

APSU-7500BTU

3" TFT LCD High Definition Multimedia Marine Headunit

The APSU-7500BTU is a multimedia marine headunit with a 3" full color TFT LCD display for optimum viewing. Even in full sun, it's perfect for any marine application. The advantages of TFT LCD are as follows: less energy consumption, visibility is sharper and has superb quality, physical design, response time, and less eye strain. This compact unit is easily mounted in a 3" round mounting hole and is IP66 rated and element proof to protect against dust, UV, temperature, water, corrosion & vibration.

- Radio (AM/FM): 18FM / 12AM Presets
- Wireless Music Streaming
- MP3 & WMA music playback
- USB cell phone charging
- 3" High Definition TFT LCD HD Display
- Bass/Treble/Balance/Fader
- Waterproof: IP66 rated
- Waterproof Male + Female Wireharness for installation
- UV coated for both black trim ring + black panel
- **Master Audio with 5 Bands EQ and custom EQ settings**
- **Additional Zone with volume control**



A rating of IP66 means that the product is fully protected against dust and solid objects. Moreover, the product is protected against powerful water jets projected by a nozzle (12.5mm) from any directions.



APSR-6185GS

6 Channel Marine Amplifier

- Output Power (RMS) @1% 1KHz 14.4V
- Stereo @4 Ohms: 6 x 150 Watts @ 73A
- Stereo @2 Ohms: 6 x 250 Watts @ 138A
- Mono @ 4 Ohms: 3 x 500 Watts @ 138A
- Frequency Response: -3dB - 10Hz-20KHz
- Crossover Range High and Low Pass: 30Hz - 300Hz 12dB/Octave
- Bass Boost: 0-12dB @ 27Hz-110Hz
- S/N Ratio (A wtg): >85dB
- Input Sensitivity: 0.2V-6V
- Over-voltage Protection: 16.5V
- Under-voltage Protection: 8.5V
- Dimension: 13.5" x 8.4" x 2.5" (343mm x 214mm x 64mm)



3000
WATT MAX

Now with customized Silica Gel insert for an improved water tight seal!



All APSR Stingray Marine Amplifiers are equipped with an advanced microprocessor controller diagnostic system designed to notify you in the event that the amplifier goes into protection for any reason.



APMRE-4095

4 Channel Mosfet Marine Amplifier

- RMS @ 4 Ohm (<1% DISTORTION): 4 x 100w
- RMS @ 2 Ohm (<1% DISTORTION): 4 x 130w
- Maximum Power Output: 2 x 360W
- Frequency Response: 50Hz - 1.2kHz
- Input Level: 0.2V - 6V
- S/N Ratio: >80dB
- THD: <1%
- Dimensions (L x W x H): 6.3" x 2.2" x 9.5"



1300
WATT MAX

WITH REMOTE
BASS KNOB
AND BUILT-IN
COOLING FAN



IP-2RCA-17

Oxygen Free 17' RCA Audio Cable

Conveniently connects equipment such as marine head units to amplifiers or audio processors. UV protected white pvc jacket is flexible and makes our cables easy to route through tight spaces. Twisted-pair arrangement for outstanding sound transfer and superior noise rejection.

ALSO AVAILABLE IN 3', 6', 12', AND 25' LENGTHS.



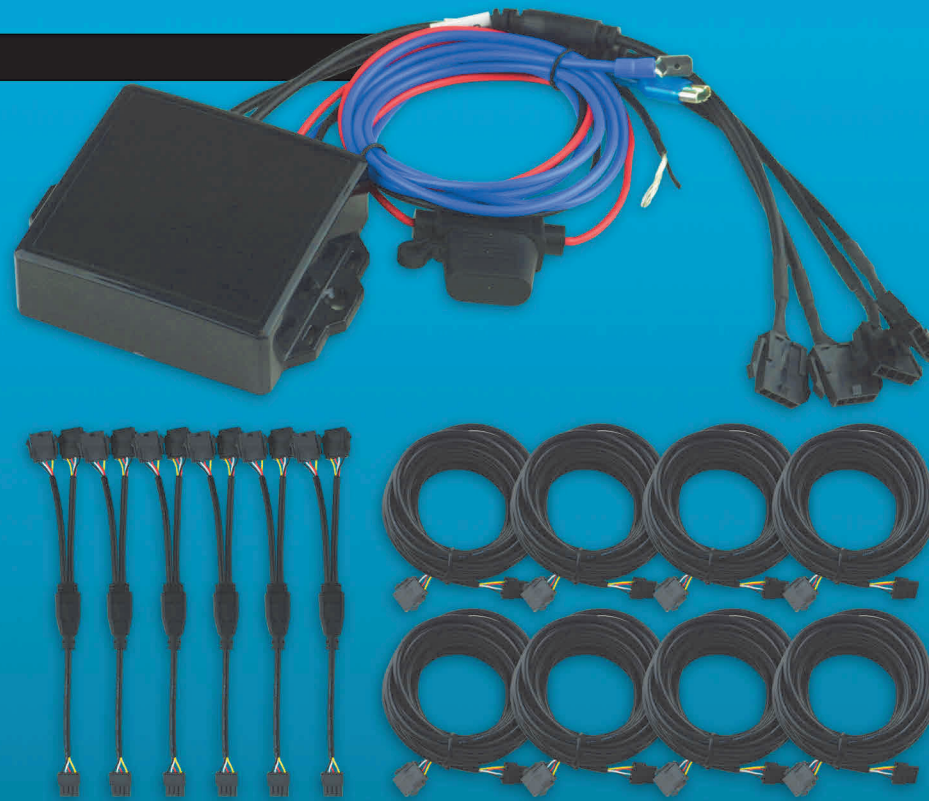
NL-8LESP-KT

Wireless RGB LED Controller and Wiring Kit

The NL-8LESP-KT Wireless RGB LED Controller and Wiring Kit allows you to create unique and custom LED lighting configurations for your application. Easily connect up to 8 LED Strips, LED Speaker Rings, or Led Loudspeakers to the RGB LED Controller to create a synchronized and stunning LED illuminated display for your boat, Motorcycle, ATV, Custom Car Audio installs and any other creative idea.

TECHNICAL SPECIFICATIONS

- (1) Wireless RGB LED Controller
- (8) 4-Pins 12ft Black Extension Cables
- (6) Y's (1 to 2 Way) 8.5in Splitters
- Voltage: 12V DC
- Current: 8 amps
- The controller uses advanced PWM (Pulse Width Modulation) digital control technology for precise and accurate color management. The controller can ONLY be operated using the LED phone app. This app is available for both IOS and Android.
- Water Resistant



EASILY CONNECTS TO:

LED SPEAKERS



LED STRIPS

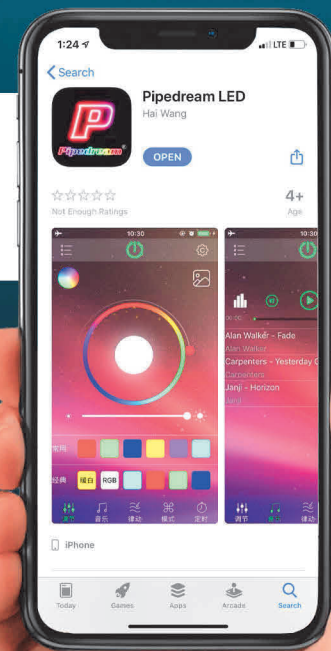


LED SPEAKER RINGS



PIPEDREAM LED APP

Wirelessly control the color, strobe pattern and speed of your LED's with the Pipedream LED mobile application available on the Apple App Store and Google Play for Android.



ASB-8002CF

UTV Soundbar

- Maximum Power: 300W
- Frequency Response: 60-20Khz
- 10 speakers Powersports Soundbar
- Heavy Duty Extruded Aluminum Water Tight Housing
- Fully Intergrated 300Watts Class D Amplifier
- Built-In Wireless Connectivity With Source Control
- Auxiliary Input/Output
- Complete Wiring Harness Included
- Dimensions: 34"(L)x4"(W)x3.8"(H)

Includes:

- (6) 3" Full Range Marine Carbon Fiber Cone Speakers
- (2) 3" Full Range PP Cone Speakers
- (2) 2" Titanium Dome Tweeters

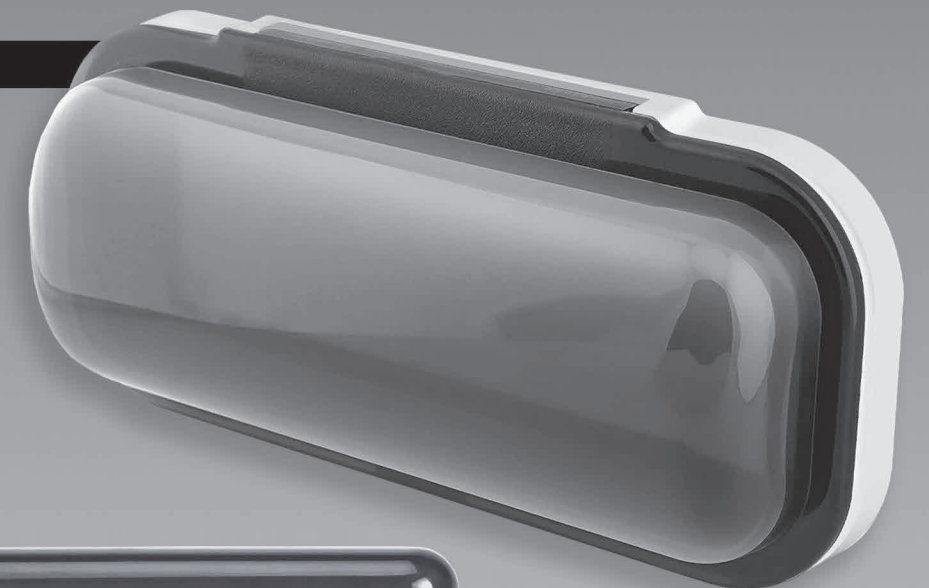
300
WATT MAX



PMC-3001

Marine Radio Cover

- Smoke colored housing case
- Recessed design accomodates most 1.0DIN headunits
- Smoke colored fold-down door with waterproof rubber seal
- Support shelf in housing for radio
- Hinge can be mounted up or down
- Concealed stainless steel mounting hardware included
- EVA foam mounting gasket
- High temperature and UV-resistant ABS polymer construction
- Dimensions (WxHxD): 9" x 4.1" x 1.92"



TMPC-4-100TCB

4 AWG - 100FT Marine Power Cable

- 4 Gauge
- 100 FT Roll
- Color: Black
- Sheathed double conductor marine power cable
- Each copper strand is Tinned to withstand the harshest environment
- Resists salt water, battery acid, oil, gasoline, heat, abrasion and ultra-violet radiation

4 **100**
AWG FEET



TMPC-8-100TCB

8 AWG - 100FT Marine Power Cable

- 8 Gauge
- 100 FT Roll
- Color: Black
- Sheathed double conductor marine power cable
- Each copper strand is Tinned to withstand the harshest environment
- Resists salt water, battery acid, oil, gasoline, heat, abrasion and ultra-violet radiation

8 **100**
AWG FEET



TMPC-4-100TCW

4 AWG - 100FT Marine Power Cable

- 4 Gauge
- 100 FT Roll
- Color: White
- Sheathed double conductor marine power cable
- Each copper strand is Tinned to withstand the harshest environment
- Resists salt water, battery acid, oil, gasoline, heat, abrasion and ultra-violet radiation

4 **100**
AWG FEET



TMPC-8-100TCW

8 AWG - 100FT Marine Power Cable

- 8 Gauge
- 100 FT Roll
- Color: White
- Sheathed double conductor marine power cable
- Each copper strand is Tinned to withstand the harshest environment
- Resists salt water, battery acid, oil, gasoline, heat, abrasion and ultra-violet radiation

8 **100**
AWG FEET



TMSC-12-250TCW

12 AWG - 250FT Tin Plated OFC Speaker Cable

- 12 Gauge
- 250 FT Roll
- Color: White
- Tin plated copper, OFC speaker wire
- Heavy and flexible insulation jacket
- Wire can be separated to use in single conductor applications

12 **250**
AWG FEET



TMSC-12-50TCW

12 AWG - 50FT Tin Plated OFC Speaker Cable

- 12 Gauge
- 50 FT Roll
- Color: White
- Tin plated copper, OFC speaker wire
- Heavy and flexible insulation jacket
- Wire can be separated to use in single conductor applications

12 **50**
AWG FEET

TMSC-12-25TCW

12 AWG - 25FT Tin Plated OFC Speaker Cable

- 12 Gauge
- 25 FT Roll
- Color: White
- Tin plate copper, OFC speaker wire
- Heavy and flexible insulation jacket
- Wire can be separated to use in single conductor applications

12 **25**
AWG FEET

TMSC-14-250TCW

14 AWG - 250FT Tin Plated OFC Speaker Cable

- 14 Gauge
- 250 FT Roll
- Color: White
- Tin plated copper, OFC speaker wire
- Heavy and flexible insulation jacket
- Wire can be separated to use in single conductor applications

14 **250**
AWG FEET



TMSC-16-500TCW

16 AWG - 500FT Tin Plated OFC Speaker Cable

- 16 Gauge
- 500 FT Roll
- Color: White
- Tin plated copper, OFC speaker wire
- Heavy and flexible insulation jacket
- Wire can be separated to use in single conductor applications

16 **500**
AWG FEET



Audiopipe®

HIGH PERFORMANCE PRO AUDIO PRODUCTS

PRO AUDIO



PROFESSIONAL
BASS
SERIES

DJAP-SUB1501

Portable 15" Professional Active Loudspeaker System

This is an incredible sounding powered sub that features a 15" driver with up to 1200W of peak power for tremendous bass that can run all night without stopping. The design, portability and power of this subwoofer makes it ideal for all types of performance settings from laid back gatherings to high intensity events.

Ideal for professional applications, DJAP-SUB1501 features all the right input/output to get the job done. Dual XLR inputs handle mono or stereo sources while dual XLR full-range and high-pass outs deliver the output flexibility you need. User-adjustable level and polarity controls offer additional control.

TECHNICAL SPECIFICATIONS

- 15" Subwoofer with Active Filter
- Frequency Response: 43-130Hz
- 2.5" Voice Coil
- Line Input: Combo/XLR
- Line Output: XLR
- Max Power: 1200 Watts
- Weather and scratch resistant texture spray painted MDF
- Black Metal Grill
- Power Voltage: AC115V & AC230V
- Dimensions: 22.8" x 18.9" x 17.7"
- Net Weight: 64 Lbs

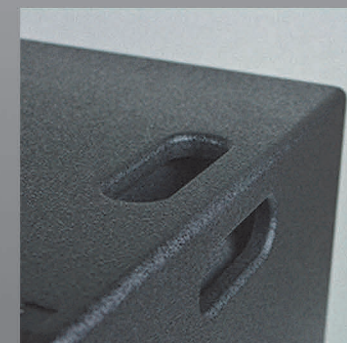
15"
SUBWOOFER

1200
WATT MAX

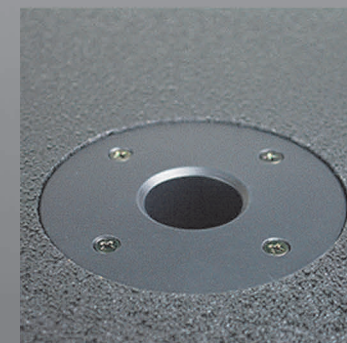
PROFESSIONAL
BASS
SERIES



WITH BUILT-IN COOLING FAN



CARRYING
HANDLES



EASY-MOUNT
HOLE



QUICK
CONNECT:
SPEAK-ON
INPUT



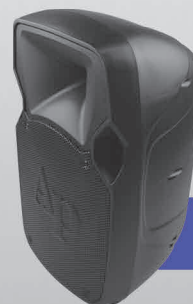
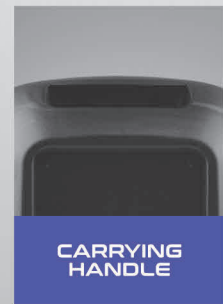
RUBBER
FEET

DJAP-1034PSV

Professional Passive Loudspeaker

- 2-Way Configuration with Active Filter
- 2.5" Titanium Driver
- 10" Woofer with 1.5" ASV Coil Voice
- Impedance: 8 Ohms
- Frequency Range: 50Hz ~ 20Khz
- Max. Power: 300W
- Magnet: 33 Oz
- Input: Speak-on
- Dimensions: 12.6" x 10" x 20"
- Weight: 15.4 lbs

10"
SUBWOOFER **300**
WATT MAX



15 Ft. Male to Male Speak-on cable included

Links with DJAP-1034A

DJAP-1254PSV

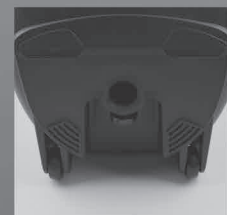
Professional Passive Loudspeaker

- 2-Way Configuration with Active Filter
- 2.5" Titanium Driver
- 12" Woofer with 2" ASV Coil Voice
- Impedance: 8 Ohms
- Frequency Range: 25Hz ~ 20Khz
- Max. Power: 400W
- Magnet: 40 Oz
- Input: Speak-on
- Dimensions: 15" x 11.8" x 22.8"
- Weight: 19.8 lbs

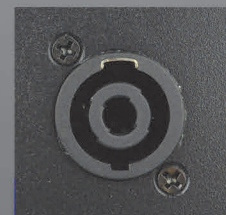
12"
SUBWOOFER **400**
WATT MAX



MULTIPLE CARRYING HANDLES



STAND MOUNTING SOCKET AND WHEELS



QUICK CONNECT: SPEAK-ON INPUT



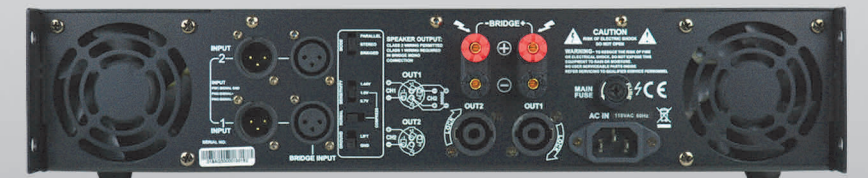
15 Ft. Male to Male Speak-on cable included

Links with DJAP-1254A

AQ-3000

Professional Power Amplifier

- Out Power (8Ω): 2x300W
- Out Power (4Ω): 2x500W
- Out Power (2Ω): 2x800W
- Out Power (BRIDGE) (8Ω): 1000W
- Out Power (BRIDGE) (4Ω): 1300W
- Frequency response @ Half Pwr: 15Hz-25KHz (+0/-1dB)
- THD+Noise @ 1KHz Full Pwr: <0.03%
- IMD 60Hz & 7KHz, 4:1:<0.038%
- Signal to Noise Ratio: >102dB
- Slew Rate (input filter limited): 40V/uS
- Damping factor 1KHz @ 8Ohm: > 400:1
- Input sensitivity: Selectable (0.77V / 1.0V / 1.44V)
- Input Impedance: 10K Ohm Balance to ground
- Input Connectors: Female XLR-3 & 6.35mm TRS Jack
- Output Circuit Type: Class AB
- Output Connectors: 4 Pole Speakon & Binding posts
- Protections: Full short-circuit, Open-circuit, Thermal, Soft-start, DC viltage, Sub/Ultrasonic and RF
- LED Indicators (per channel): Bridge, Parallel, Power, Singnal, Clip, Protect
- Panel controls: Front-2 input attenuators
- Rear-Ground lift, mode selection, compressor
- Cooling: Front-to-Back via 2 variable-speed fans
- Power supply volatge: 110V AC/60Hz
- Power supply Fuse (250): 8A
- Dimensions: 19.0" x 17.3" x 3.5"
- Weight: 46.3 lbs



AQ-5000

Professional Power Amplifier

- Out Power (8Ω): 2x600W
- Out Power (4Ω): 2x1050W
- Out Power (2Ω): 2x1400W
- Out Power (BRIDGE) (8Ω): 1750W
- Out Power (BRIDGE) (4Ω): 2300W
- Frequency response @ Half Pwr: 15Hz-25KHz (+0/-1dB)
- THD+Noise @ 1KHz Full Pwr: <0.03%
- IMD 60Hz & 7KHz, 4:1:<0.038%
- Signal to Noise Ratio: >102dB
- Slew Rate (input filter limited): 40V/uS
- Damping factor 1KHz @ 8Ohm: > 400:1
- Input sensitivity: Selectable (0.77V / 1.0V / 1.44V)
- Input Impedance: 10K Ohm Balance to ground
- Input Connectors: Female XLR-3 & 6.35mm TRS Jack
- Output Circuit Type: Class AB
- Output Connectors: 4 Pole Speakon & Binding posts
- Protections: Full short-circuit, Open-circuit, Thermal, Soft-start, DC viltage, Sub/Ultrasonic and RF
- LED Indicators (per channel): Bridge, Parallel, Power, Singnal, Clip, Protect
- Panel controls: Front-2 input attenuators
- Rear-Ground lift, mode selection, compressor
- Cooling: Front-to-Back via 2 variable-speed fans
- Power supply volatge: 110V AC/60Hz
- Power supply Fuse (250): 12A
- Dimensions: 19.0" x 17.3" x 5.2"
- Weight: 55.1 lbs

