

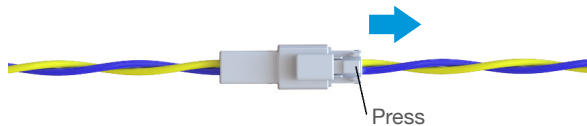
# Replacement of BOLT Fixed Upper Hinge Actuator (BEA2000)

These instructions are applicable for 12V and 24V actuators.

The actuator replacement must be done when the vessel is out of the water. Do not attempt to replace the actuator while the vessel is in the water as the actuators are mounted below the water line. Before performing any electrical work on a vessel, disconnect the battery by removing the positive (+) cable or if equipped, turn the battery disconnect switch to the OFF position.

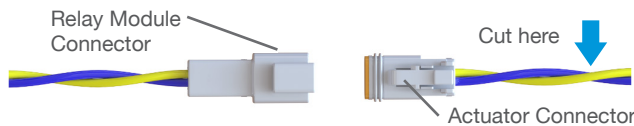
## To Remove an Existing BOLT Actuator

- Unplug the wiring harness connection from the actuator to the relay control module.



- Cut off the wiring harness connector from the old actuator so it can pass through the transom hole.

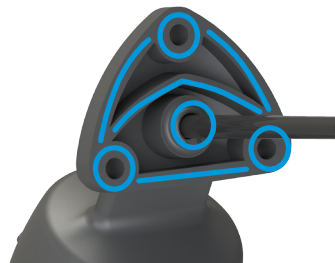
**⚠ Only cut the wires coming from the actuator.**



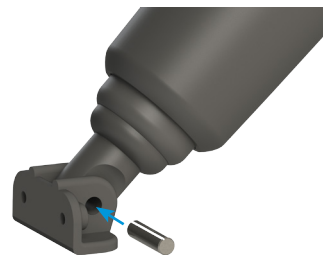
- Unscrew the lower hinge mount of the BOLT actuator from the trim tab by removing the (2) 1/4-20 x 3/4" long Phillips head screws using a #3 Phillips head screw driver.
- Allow the trim tab to swing down and out of the way.
- Unscrew the upper hinge mount of the BOLT actuator from the transom by removing the (3) #14 x 1-1/2" long screws using a #3 Phillips head screw driver (Be careful not to strip the threads while unscrewing).
- The actuator can then be removed. Take care to gently pull the electrical wires through the transom hole.
- Clean the hull using a sharp blade to remove any old sealant from the actuator mounting locations. Wipe clean using a solvent.

## To Install the New BOLT Actuator

- Carefully insert the end of the electrical wires through the transom hole.
- Apply 3M 5200 waterproof sealant on the mounting surface and around the wiring of the new actuator.



- Mount the upper hinge of the new actuator to the transom using the supplied #14 x 1-1/2" screws with a #3 Phillips head screw driver.
- Install the lower hinge to the actuator using the supplied stainless steel pin.



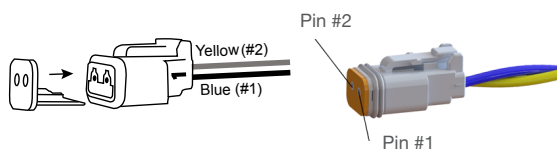
*Instructions continued on the reverse side...*

## To Install the New BOLT Actuator (Cont.)

- Mount the trim tab to the lower hinge of the new actuator using the (2) 1/4-20 x 3/4" supplied screws using a #2 Phillips head screwdriver.

### **⚠ Do not use a power screw driver.**

- Install the wiring connector onto the wires:
  - » Insert the blue wire into location pin #1, insert the yellow wire into location pin #2 one at a time into the back of the connector until the pin locks into place.
  - » Install the orange plastic wedge into the front of the connector.



- » Ensure the proper wire color is on the correct side of the connector by comparing to the old connector that was cut off.

- Connect the male wiring connector to the female wiring connector coming from the relay module.



- Reconnect the positive (+) battery cable or turn the battery disconnect switch to the ON position and check the system for functionality.
- Troubleshooting: If the actuators are working backwards, the wires are reversed.

