

# MASTER CATALOG



indoor  
outdoor  
boating  
household  
business  
leisure  
fun

• LETTERS AND NUMBERS •

• REGISTRATION PLATES •

• INFORMATION PLAQUES •

• INFORMATION LABELS •

• CLIPS •

• LOG BOOKS •

• PLAQUES •

• GET IT CUSTOM MADE •

• SEA SNAP® CLOTHESPIN •



for your  
press on  
stick on  
snap on  
tack on  
clip on  
life!

## CONTENTS

<b>LETTERS and NUMBERS</b>	<b>3-5</b>
Vinyl Peel and Stick	
Hard Plastic	
Large Fabric	
<b>REGISTRATION PLATES</b>	<b>5</b>
<b>IDENTI-PLATES™</b>	<b>6, 7</b>
Ready-made switch identification	
Custom Identi-Plates	
<b>ADHESIVE LABELS</b>	<b>8, 9</b>
Regulatory Information	
Identification Signs	
<b>GET IT CUSTOM MADE</b>	<b>7, 9</b>
<b>PLAQUES</b>	<b>8, 10, 11</b>
Regulatory Information	
Door Plaques	
Custom Plaques	
Health Safety Plaques	
<b>CLIPS, CLIPS, CLIPS!</b>	<b>12</b>
Sea Snap® Clothespin	
Clipper™ Clips	
<b>BOATING ACCESSORIES</b>	<b>13</b>
Ice Pick	
Winch Handles	
Cover Plates	
Drink Holders	
<b>FUN PLAQUES</b>	<b>14-15</b>
<b>LOG BOOKS</b>	<b>16</b>



**Bernard Engraving is your source for ready made signage!**  
From small identification plates to large 12" fabric sail letters, peel and stick caution labels, and a huge assortment of molded plastic signs, you can get what you need from Bernard. And if you want custom work, definitely give us a call!

**On your boat, or at your business, which switch does what?**  
You can make your life infinitely easier and safer with our tiny Identi-Plates™. There are 156 in stock for you to choose from.

**Want something fun?** Those plaques that you always laughed at on your friend's boat are manufactured by Bernard. Check them out; they're all here! Great for the game room, the boat, or the office, they're nearly irresistible, for yourself or as gifts.



**Need to hang something up?** Try our unusual and handy oversized heavy duty clothespins for hanging wet towels and clothes from boat rails, shower rods, and household hooks. You'll also find our Clipper Clip™ lineup useful to help keep you organized. Ideal for holding all kinds of tools and a variety of accessories, they're perfect for indoor or outdoor use.



**If you're a boater,** you'll treasure your memories on the water. Ensure you can recall them by using our log books or ship's manager logbooks for both powerboating and sailing. They make excellent gifts any time of year for the boaters in your life. And while you're selecting other items, take a look at our useful, high quality boat accessories: cover plates and floating winch handles, multipurpose ice pick, and PVC flexible plastic cup holders. They're not items you can find just anywhere.



indoor outdoor boating household business leisure fun



# VINYL LETTERS AND NUMBERS

**\* Alphanumerics:**  
the letters and numbers  
in a set of characters

- Full adhesive backing
- Suitable for fiberglass and metal surfaces
- Gloss vinyl gives the appearance of being painted on
- Indoor/outdoor use; Bernard vinyl alphanumerics typically last 5-7 years
- Economical; great for mailboxes, boats, signs, address plaques, and more
- All models and sizes black or white. Other colors as shown. Custom colors available..



## Standard Gothic Die-Cut:

**A B C D E F G H I  
J K L M N O P Q R  
S T U V W X Y Z -  
1 2 3 4 5 6 7 8 9 0**



## Bernard Peel and Stick Die-Cut Gothic Alphanumerics

MODEL#	COLOR	SIZE	CHARACTERS
PS-100-B-	BLACK	1"	A-Z, 0-9
PS-100-W-	WHITE	1"	A-Z, 0-9
PS-125-B-	BLACK	1-1/4"	A-Z, 0-9
PS-125-W-	WHITE	1-1/4"	A-Z, 0-9
PS-20-B-	BLACK	2"	A-Z, 0-9
PS-20-W-	WHITE	2"	A-Z, 0-9
PS-30-B-	BLACK	3"	A-Z, 0-9
PS-30-BL-	BLUE	3"	A-Z, 0-9
PS-30-R-	RED	3"	A-Z, 0-9
PS-30-W-	WHITE	3"	A-Z, 0-9
PS-40-B-	BLACK	4"	A-Z, 0-9
PS-40-W-	WHITE	4"	A-Z, 0-9
PS-50-B-	BLACK	5"	0-9
PS-50-W-	WHITE	5"	0-9

Standard Gothic characters are the most widely used of the Bernard letters and numbers. 3" Gothic meets requirements for boat registration numbers in most states and is also ideal for Port of Hail when using 4" Roman for the boat name.

On smaller boats, the clean compact look of Gothic letters is especially useful.

Capital letters only are available. Mix and match sizes for the appearance of upper and lower case.

Bernard Standard Gothic is also available in a self-aligning option.



## Narrow Gothic Self-Aligning:

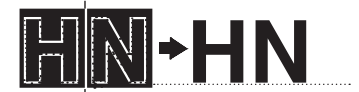
**A B C D E F G H I J  
K L M N O P Q R S T  
U V W X Y Z -  
1 2 3 4 5 6 7 8 9 0**

## Self-Aligning Gothic Alphanumerics

MODEL #	COLOR	SIZE	CHARACTERS
<b>NARROW GOTHIC</b>			
SA-30-B-	BLACK	3"	A-Z, 0-9
SA-30-W-	WHITE	3"	A-Z, 0-9
<b>STANDARD GOTHIC (Same font as die-cut Gothic)</b>			
SAG-30-B-	BLACK	3"	A-Z, 0-9
SAG-30-W-	WHITE	3"	A-Z, 0-9

Available in two fonts, Bernard self-aligning Gothic characters are pre-spaced, each in a pressure sensitive vinyl rectangle with a 3/16" border around each letter.

Easily lined up and applied, with the borders peeled away, the result is attractive and professional looking.



## Classic Roman Die-Cut:

**A B C D E F G H I J  
K L M N O P Q R S  
T U V W X Y Z -  
1 2 3 4 5 6 7 8 9 0**

## Classic Roman Die-Cut Alphanumerics

MODEL #	COLOR	SIZE	CHARACTERS
PS-400-RB-	BLACK	4"	A-Z, 0-9
PS-400-RW-	WHITE	4"	A-Z, 0-9
PS-700-RB-	BLACK	7"	A-Z, 0-9
PS-700-RW-	WHITE	7"	A-Z, 0-9

Classic Roman letters have a long tradition of use for boat names. Their elegance and excellent legibility make them ideal for boat identification and other signage. Capital letters only are available; mix sizes to give the appearance of upper and lower case.

These letters and numbers meet the requirements for documented vessels. Both 4" and 7" sizes are available in black or white.







\* *The outdoor grade plastic of these letters and numbers is ideal for house numbers, shed markings, dock identification, and other weather-exposed locations.*

- Hard plastic letters and numbers, approximately 1/8" thick, with brass brads included, are suitable for wooden boats.
- Bernard plastic letters may also be glued to fiberglass, metal, and other non-porous surfaces with adhesives available in most marine and hardware stores.
- These well-made letterforms add a handsome and professional appearance to a variety of applications.

## Versatile Gothic:

**A B C D E F G H I  
J K L M N O P Q R  
S T U V W X Y Z -  
1 2 3 4 5 6 7 8 9 0**

## Versatile Gothic:

The Gothic style is the most widely used of the Bernard letters and numbers. 3" Gothic meets requirements for registration numbers in most states. These rigid plastic alphanumerics are available in black face/white bevel and also paintable white, to suit your color needs. Capital letters only are available. Mix sizes for the appearance of upper and lower case. Brass mounting brads are included.

### Hard Plastic 3" and 4" Alphanumerics

MODEL #	COLOR	SIZE	CHARACTERS
30-BW-	BLACK ON WHITE	3"	A-Z, 0-9
30-W-	PAINTABLE WHITE	3"	A-Z, 0-9
40-BW-	BLACK ON WHITE	4"	A-Z, 0-9
40-W-	PAINTABLE WHITE	4"	A-Z, 0-9

## Classic Roman:

**A B C D E F G H I J  
K L M N O P Q R S  
T U V W X Y Z -  
1 2 3 4 5 6 7 8 9 0**

## Classic Roman:

Classic Roman letters are readable from a distance because of their elegant letterforms and excellent legibility. Capital letters only are available.

### Hard Plastic 5" Roman Alphanumerics

MODEL #	COLOR	SIZE	CHARACTERS
50-BW-	BLACK ON WHITE	5"	A-Z, 0-9
50-W-	PAINTABLE WHITE	5"	A-Z, 0-9



5" Roman letters and numbers



3" Versatile Gothic alphanumerics used for a building sign







# LARGE LETTERS AND NUMBERS

*\* If you need large identification numbers or letters for sails, barns, or trucks, these are for you.*

Large Gothic:

**A B K L M N O  
P Q R S T U V  
W X Y Z 1 2 3 4  
5 6 7 8 9 0**

## Large Gothic Numbers and Letters

These large insignia fabric characters are what you see on sailboat sails. They can be seen from quite a distance. If you need large identification numbers or letters on trucks, barns, or other large structures, these are ideal for those purposes. Bernard large size alphanumerics have a self-adhesive back, ideal for placement before sewing onto sails. Other surfaces require additional adhesive.

The photo gives an idea of the size. You can select 10" and 12" characters in black, but they are available for quantity purchases in other colors.

Contact us for additional details. We offer the full alphanumeric set.

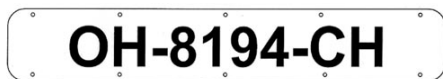


## Large Alphanumerics

MODEL #	COLOR	SIZE	CHARACTERS
SN-1000-BK-	BLACK FABRIC	10"	A-Z, 0-9
SN-1200-BK-	BLACK FABRIC	12"	A-Z, 0-9

*10" and 12" fabric letters are readable from a long way. They are seen here next to a standard license plate.*

# REGISTRATION PLATES AND LABELS



We offer five registration number backings—three hard plastic plates and two labels of pressure-sensitive vinyl-mylar.

- Bernard 3" pressure-sensitive letters and numbers can be applied to either style plate before the plates are secured to the hull.
- Hard plastic plates are attached to wood hulls with screws and can easily be removed at refinishing time.
- The hard plastic plates are also excellent for use on inflatable boats by tying them to hand lines.
- Pressure-sensitive labels are for non-porous surfaces.
- Lettering sold separately.
- Order by catalog number.



Registration plate used on a boat

MODEL #	COLOR	SIZE
RP-2400-W	WHITE/HARD PLASTIC	4" x 24"
RP-2400-B	BLACK/HARD PLASTIC	4" x 24"
RP-3200-W	WHITE/HARD PLASTIC	4" x 32"
RL-2400-W	WHITE/PRESSURE SENSITIVE LABEL	4" x 24"
RL-2400-B	BLACK/PRESSURE SENSITIVE LABEL	4" x 24"

*Bernard accepts no responsibility nor any liability for compliance or non-compliance with any plaque regulation.*



❖ **Identi-Plates™ are the industry standard for switch identification.**

- Durable molded plastic.
- White letters and bevel on black background, except as noted.
- Plate dimensions are 1/2" x 1-1/2"

All IP-series plates can be glued or mounted with screws or brads. Each has two screw/nail holes for #2 fasteners on 1-3/16" centers.

**IP-999:** Plates without holes or with custom messages are available as custom production Red Plate (IP-999) or Custom Black Plate (IP-999).

Blank plates are available for your own engraving: Blank Red Plate (IP-097 RED) or Blank Black Plate (IP-097 BLACK).  
Note: Plates can also be ordered online.



- IP-001 ANCHOR LIGHT
- IP-002 BILGE PUMP
- IP-003 BLOWER
- IP-004 CHOKE
- IP-005 COMPASS
- IP-006 DECK LIGHTS
- IP-007 DEPTH SOUNDER
- IP-008 FORWARD
- IP-009 HORN
- IP-010 LIFE JACKETS (RED)
- IP-011 LIGHT
- IP-012 MASTER
- IP-013 MASTHEAD LIGHT
- IP-014 NEUTRAL
- IP-015 OFF
- IP-016 ON
- IP-017 PANEL LIGHTS
- IP-018 RADIO
- IP-019 REVERSE
- IP-020 RUNNING LIGHTS
- IP-021 SEARCH LIGHT
- IP-022 STARTER
- IP-023 STERN LIGHT
- IP-024 THROTTLE
- IP-025 WATER TEMPERATURE
- IP-026 WIPER
- IP-027 6 VOLT
- IP-028 12 VOLT
- IP-029 32 VOLT
- IP-030 110 A.C.
- IP-031 AERATOR
- IP-032 AFT

- IP-033 AUTOMATIC
- IP-034 BAIT PUMP
- IP-035 BAITWELL
- IP-036 BILGE BLOWER
- IP-037 BOW LIGHT
- IP-038 CABIN LIGHT
- IP-039 CHLORINATOR
- IP-040 CLOSED
- IP-041 CONTROL
- IP-042 CONTROLLER
- IP-043 COURTESY LIGHTS
- IP-044 DOCKING LIGHTS
- IP-045 DOME LIGHT
- IP-046 ELECTRIC TOILET
- IP-047 ENGINE ROOM
- IP-048 ENGINE SHUTOFF
- IP-049 FAN
- IP-050 FLARES (RED)
- IP-051 FLOOD LIGHT
- IP-052 FRESH WATER SYSTEM
- IP-053 FUEL
- IP-054 FUEL PUMP
- IP-055 GAS
- IP-056 GENERATOR
- IP-057 HEATER
- IP-058 HOLDING TANK
- IP-059 IGNITION
- IP-060 INSTRUMENT
- IP-061 LORAN
- IP-062 MANUAL
- IP-063 MISC.
- IP-064 NAVIGATION
- IP-065 NEGATIVE
- IP-066 OIL PRESSURE
- IP-067 OIL TEMP.
- IP-068 OPEN
- IP-069 PILOT
- IP-070 PILOT LIGHT
- IP-071 PORT
- IP-072 PORT LIGHT
- IP-073 POSITIVE
- IP-074 POWER
- IP-075 POWER TILT
- IP-076 POWER WINCH
- IP-077 RADAR
- IP-078 RADIO TELEPHONE
- IP-079 RANGE LIGHTS
- IP-080 RECORD
- IP-081 REFRIGERATOR
- IP-082 SHOWER
- IP-083 SIREN
- IP-084 SPREADER LIGHTS
- IP-085 STARBOARD
- IP-086 STBD. LIGHT
- IP-087 SWITCH
- IP-088 TANK 1
- IP-089 TANK 2
- IP-090 TANK 3
- IP-091 TOWING LIGHTS
- IP-092 TILT
- IP-093 TRIM
- IP-094 WATER PRESSURE
- IP-095 24 VOLT
- IP-096 110 D.C.

- IP-097 BLANK (BLACK)
- IP-097 BLANK (RED)
- IP-098 STROBE LIGHT
- IP-099 VAPOR DETECTOR
- IP-100 SHIFT
- IP-101 HIGH
- IP-102 LOW
- IP-103 BATTERY PARALLEL
- IP-104 EMERGENCY (RED)
- IP-105 ALARM
- IP-106 ALTERNATOR
- IP-107 AMP METER
- IP-108 SLING
- IP-109 ICEBOX
- IP-110 SALT WATER
- IP-111 TACHOMETER
- IP-112 BATTERY 1
- IP-113 BATTERY 2
- IP-114 COCKPIT DRAIN
- IP-115 ENGINE INTAKE
- IP-116 EXHAUST
- IP-117 GALLEY SINK DRAIN
- IP-118 HEAD DISCHARGE
- IP-119 HEAD INTAKE
- IP-120 HEAD SINK DRAIN
- IP-121 ICE BOX DRAIN
- IP-122 KNOT METER
- IP-123 OVERBOARD
- IP-124 SCUPPER
- IP-125 AUX. TANK
- IP-126 CROSS OVER
- IP-127 PORT TANK
- IP-128 STBD. TANK
- IP-129 RETURN
- IP-130 SUPPLY
- IP-131 FRESH WATER
- IP-132 ENGINE
- IP-133 FEED
- IP-134 FISH TANK
- IP-135 220 VAC
- IP-136 TANK 4
- IP-137 BATTERY 3
- IP-138 RAW WATER WASHDOWN
- IP-139 FRESH WATER WASHDOWN
- IP-140 MAIN TANK
- IP-141 CENTER ENGINE
- IP-142 STARBOARD ENGINE
- IP-143 PORT ENGINE
- IP-144 STARBOARD AUXILIARY
- IP-145 PORT AUXILIARY
- IP-146 TRANSOM SHOWER
- IP-147 LIVE WELL
- IP-148 GPS
- IP-149 VHF
- IP-150 FIRE EXTINGUISHER (RED)
- IP-151 PLOTTER
- IP-152 FORWARD HEAD
- IP-153 AFT HEAD
- IP-154 120 VAC INLET #1
- IP-155 120 VAC INLET #2
- IP-156 AIR CONDITIONER
- IP-999 Black custom message
- IP-999 Red custom message



Bernard informational plaques are made in the colors and sizes shown. Please order by item number.

- Non-corrosive, molded plastic with adhesive backing or mounting holes as shown.
- Easy to mount on almost any clean surface.

## CUSTOM PLATES

These are examples of one kind of custom engraved Identi-Plates™ we can make for you. Please call and let us know what you need!



Plate dimensions are 1/2" x 1-1/2". Maximum number of characters, including spaces =11

CAPITAL LETTERS/NUMBERS ONLY

For more than 11 characters, a two-line plate is needed.



Round Custom Plates.  
1-1/4" OD, x 15/32" ID

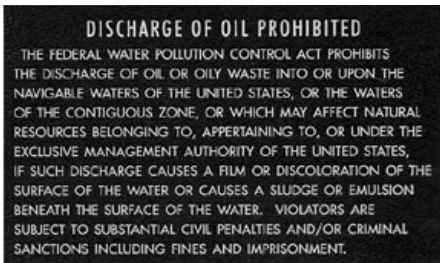


Round Custom Plates.  
1-1/8" OD, x 15/32" ID



Round Custom Plates  
1-1/8" OD, x 15/32" ID

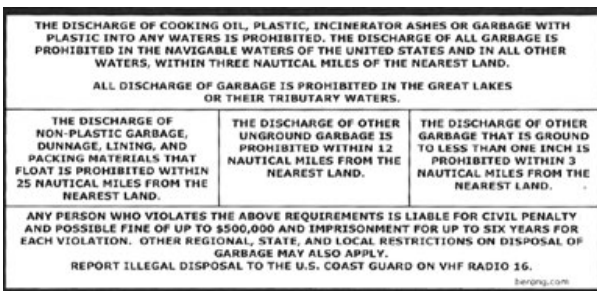
Please see page 9 for more examples of our custom work!



### Oil Discharge Plaque

Model No: P-204

Required on all boats 26 feet and over with enclosed engine compartment. White text on black background. Measures 8" x 5"



### Dumping Plaque

Model No: P-227

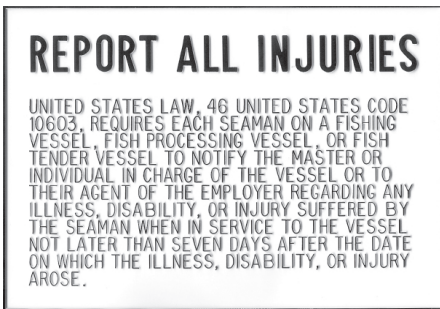
Do your part to prevent pollution from boats! Bernard offers plaques for all boats over 26 feet to display overboard discharge laws. Don't risk potential criminal and civil fines! Black text on white background. Measures 9-1/4" x 4-1/2"



### Drug Plaque

Model No. P-229

Recommended for all commercial vessels. The United States Coast Guard maintains a zero tolerance drug policy. Black text on yellow background. Measures 6-3/4" x 4"



### Injury Plaque

Model No. P-230

Required on some boats by the United States Coast Guard. Adhesive backing, Easy to apply. Black text on white. Measures 8-5/8" x 5-7/8"



### General Alarm Plaque

Model No. P-231

Required on some commercial vessels by the United States Coast Guard. Red text on white background. Measures 13" x 4"



### Blower Notice

Model No. P-201

NOTICE Before Starting Engine Operate Blower 5 Min. Black text on yellow background. Measures 3-1/4" x 1"

Bernard accepts no responsibility nor any liability for compliance or non-compliance with any plaque regulation.







## IDENTI-LABELS™

- Pressure sensitive (self-adhesive) backing.
- Easy to apply.
- Sizes and colors indicated with each item.

### LIFT LABELS

Mark the lift points or sling locations on each side of boat

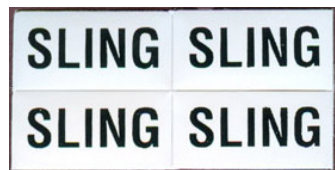


### Lift Stickers

Model No. IL-06

Set of four

Black text on white background.



### Sling Sticker Sets

Model No. IL-07

Set of four

Black text on white background.

MAIN HALYARD	POLE DOWN HAUL
JIB HALYARD	POLE LIFT
SPINNAKER HL'YD.	TRAVELER
CENTER BOARD	TRAVELER
JIB SHEET	JIB DOWN HAUL
JIB SHEET	MAIN SHEET
BARBER HAULER	BOOM VANG
BARBER HAULER	CUNNINGHAM

### Sailboat Labels

Model No. IL-01

16 Sailboat Labels

White text on black background.

Labels each 1/2"x 2-1/4"

BILGE PUMP	RUNNING LIGHTS
BLOWER	LIVE-WELL
INTERIOR LIGHTS	NEGATIVE
TILT	12-VOLT
INSTRUMENT LIGHTS	WIPER
HORN	24-VOLT
AERATOR	ANCHOR
BASSPIRATOR	TILT/TRIM

### Bass Boat Labels

Model No. IL-03

16 Bass Boat Labels

White text on black background.

Labels each 1/2"x2-3/8"

BILGE PUMP	MASTER	THROTTLE
BLOWER	OIL PRESSURE	TRIM TABS
CABIN LIGHTS	PANEL LIGHTS	WIPER
CHOKE	RADIO	ON
COMPASS	RUNNING LIGHTS	OFF
DEPTH SOUNDER	SEARCH LIGHT	FORWARD
HORN	SHORE POWER	NEUTRAL
INSTRUMENTS	STARTER	REVERSE

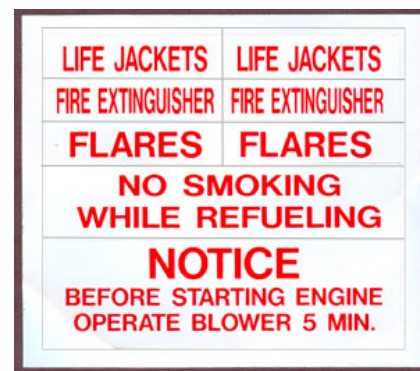
### Boat Labels

Model No. IL-02

24 General Purpose Boat Labels

White text on black background.

Labels each approximately 1/2"x1-1/2"



### Safety Labels

Model No. IL-04

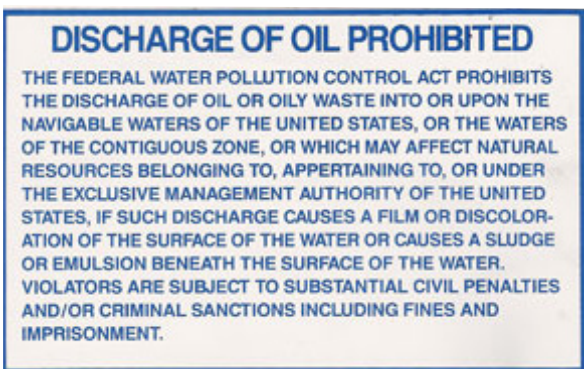
8 Safety Labels for your boat

Red text on white background.

LIFE JACKETS, FIRE EXTINGUISHERS,

FLARES: 1/2"x 2-3/8"; NO SMOKING:

1"x 4-5/8"; NOTICE: 1-1/2"x 4-5/8"



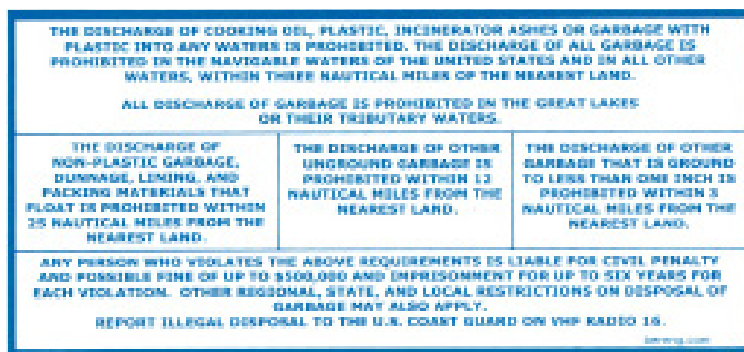
### Oil Discharge Label

Model No. IL-204

Required on all boats 26 feet and over with enclosed engine compartment.

Blue text on white background.

Measures 8" x 5"



### Marpol Dumping Label

Model No. IL-227

Do your part to prevent pollution from boats!

Bernard offers labels for all boats over 26 feet to display overboard discharge laws. Don't risk potential criminal and civil fines!

Blue text on white background.

Measures 9-1/4" x 4-1/2"

Bernard accepts no responsibility nor any liability for compliance or non-compliance with any plaque regulation.





**Item No. HA-WHBE-SLVR**  
Silver Tone Foil text with a black background



**Item No. HA-WHBL-GOLD**  
Gold Tone Foil text with a black background



One of the best ways to combat the spread of infections and illness is to wash your hands. Flu and cold viruses can live and be infectious for several minutes to over an hour on hands, about 15 minutes on paper products, and up to 8 hours or more on hard surfaces such as phones, computers, and door handles.

Clean hands prevent infections. Keeping hands clean prevents illness at home, at school, and at work. Hand hygiene practices are key prevention measures in healthcare settings, daycare facilities, schools, workplaces, public institutions, and for the safety of our food. Wash your hands often. Everyone benefits.

### Clean Hands Save Lives!

Bernard Engraving has two different Eye-Level Reminder plaques to help you to do your part in stopping the spread of infections and illness. The two messages are available in silver and gold for high visibility. They are also available in a rainbow of colors for minimum quantity runs. Please call for more information.

Most effective when mounted at eye level, they are rigid plastic and measure 5" x 1-1/2" and are backed with double-sided tape for easy, secure mounting.



Image by Peter Cade / Photodisc / Getty Images

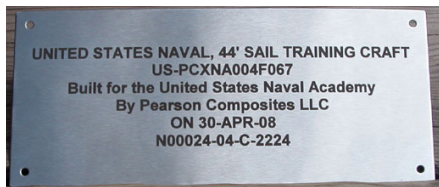
## GET IT CUSTOM MADE!



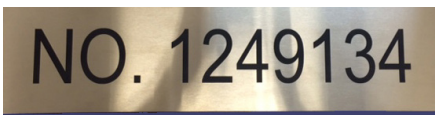
*Want something different? We love making custom plates and labels for our customers! Just call us with your requirements. See page 7 for other custom items.*

### ENGRAVED STAINLESS STEEL

Engraved stainless steel plaques add unmistakable good looks and quality to your surroundings. Call and tell us what you'd like. (We order the stainless.)



Special run for Pearson Composites.

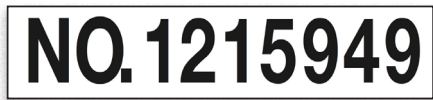


USCG Documentation Plate. Stainless. Measures 5" x 20" long. Alphanumerics are 3" tall.

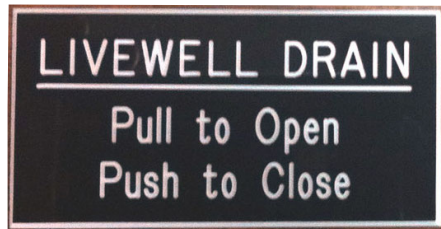
### ENGRAVED PLASTIC PLATES



Call to ask about engraving the names you need on our Engraved Plastic Strips, from 6" to 11-1/2" long. These are 1/2" high.



USCG Documentation Plate. Engraved Plastic. Measures 5" x 20" long. Alphanumerics are 3" tall.



Custom Plaque. 1-1/2" x 3"

### CUSTOM PRINTED LABELS



Glossy surface, peel off self-adhesive backing.

Bernard accepts no responsibility nor any liability for compliance or non-compliance with any plaque regulation.





Bernard informational plaques are made in the colors and sizes shown. Please order by item number.

- Non-corrosive, molded plastic with adhesive backing.
- Easy to mount on almost any clean surface.



**Danger Keep Away**

**Model No. P-208**

DANGER. Avoid personal injury. KEEP AWAY when engines are running.

White text on red background.

Measures 3-1/4" x 1-1/4"



**Warning Backing Boat Down**

**Model No. P-210**

WARNING. Backing boat down hard may force water into generator if not in operation.

Black text on yellow background.

Measures 4-1/4" x 1-1/4"



**Danger Transom Door**

**Model No. P-215**

DANGER. Transom door must be closed and secure when engine is running.

White text on red background.

Measures 4-3/8" x 1-3/8"



**Electrical Disconnect Tag**

**Model No. P-216**

WARNING.

To minimize shock and fire hazard:

1. Turn off shoreline breaker at A.C. switching panel before connecting or disconnecting shoreline cord set.
2. Connect shoreline cord set at boat first.
3. Disconnect shoreline cord set at shore outlet first.
4. Secure receptacle covers when not in use.

White text on red background.

Measures 3-3/4" x 3-1/4"



**Seat Warning Tag**

**Model No. P-218**

Seat not to be used when boat is under power.

Black text on yellow background.

Measures 3-3/8" x 1"



**Pedestal Warning**

**Model No. P-220**

Not to be used with pedestal.

Black text on yellow background.

Measures 3-1/4" x 1"

## DOOR PLAQUES



Bernard Door Plaques add a touch of elegance for identification to boats, travel trailers, home, office and other places. They are attractive and practical. Pressure sensitive adhesive backing.

1-1/2" x 5" actual size.

Order by item number.

Item	Description
DP-01	CAPTAIN
DP-02	CREW
DP-03	GALLEY
DP-04	HEAD
DP-05	LIQUOR
DP-06	LOCKER
DP-07	MEN
DP-08	PANTRY
DP-09	PRIVATE
DP-10	WOMEN



**Large Sling Tag**

**Model No. P-233**

SLING

Black text on white background.

Measures 3" x 1"

Bernard accepts no responsibility nor any liability for compliance or non-compliance with any plaque regulation.



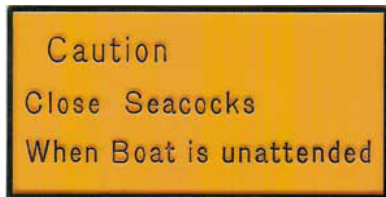


Bernard informational plaques are made in the colors and sizes shown. Please order by item number.

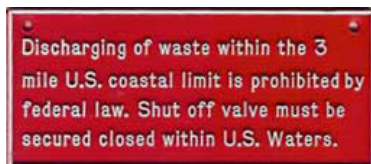
- Non-corrosive, molded plastic with adhesive backing.
- Easy to mount on almost any clean surface.



**Caution Shore Water**  
**Model No. P-223**  
 CAUTION. Disconnect shore water when boat is unattended or occupant sleeping.  
 Black text on yellow background.  
 Measures 4" x 2"



**Caution Seacocks**  
**Model No. P-224**  
 CAUTION. Close seacocks when boat is unattended.  
 Black text on yellow background.  
 Measures 4" x 2"



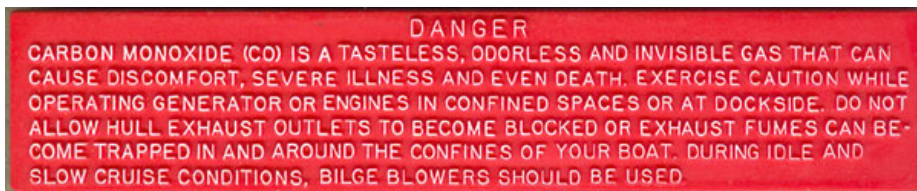
**Discharge of Waste**  
**Model No. P-225**  
 Discharging of waste within the 3 mile U.S. coastal limit is prohibited by federal law. Shut off valve must be secured closed within U.S. waters.  
 White text on red background.  
 Measures 3-1/2" x 1-1/2"



**Warning Fuel Lines**  
**Model No. P-226**  
 WARNING. Leaking Fuel is a Fire Hazard. Inspect System at least Annually.  
 White text on red background.  
 Measures 4" x 2"



**Warning Do Not Swim**  
**Model No. P-232**  
 WARNING.  
 DO NOT SWIM BEHIND BOAT WHILE ENGINES OR GENERATOR ARE RUNNING. SERIOUS INJURY OR DEATH MAY OCCUR FROM THE PROP OR ASPHYXIATION FROM CARBON MONOXIDE POISONING.  
 Black text on orange background.  
 Measures 8" x 5"



**Danger CO is a Tasteless**  
**Model No. P-236**  
 DANGER  
 Carbon Monoxide (CO) is a tasteless, orderless and invisible gas.....  
 White letters on red.  
 Measures 6.25" x 1.25"

Bernard accepts no responsibility nor any liability for compliance or non-compliance with any plaque regulation.





## SEA SNAP<sup>®</sup> Unusual and Useful Giant Clothespin



Hang wet towels securely on rails or lines with Sea Snap nautically inspired clothespins from Bernard Engraving. Sea Snap is 2-1/2" wide at rest and 6-1/4" long, with a 1-1/2" jaw opening. These handy plastic pins have big teeth—all the better to hold things with!

- Wide hook designed for hanging Sea Snap from 3/4" to 1-1/4" railings—on the boat, shower rods at home, in the shop.
- Hangs items securely from lifelines and other rigging.
- Available in teal, yellow, red, clear, and blue.
- Handy for clipping and organizing wires and cables.
- Useful for hanging towels, swimwear, and snow wear to dry.
- Great holiday stocking stuffers and useful hostess gifts.
- Sold individually.
- Order by item number.



MODEL #	COLOR
SS1TEA	TEAL
SS1YEL	YELLOW
SS1RED	RED
SS1CLR	CLEAR
SS1BLU	BLUE

## CLIPPER CLIP<sup>™</sup> by Beckson<sup>®</sup>

**These attractive plastic clips can solve your holding needs.** Ideal for storing boat hooks, gaffs, mops, flashlights, pumps, tools and a variety of accessories, Clipper Clips are non-conductive, non-magnetic, and non-corrosive; perfect for indoor or outdoor use. Our safety design has no sharp edges, reducing the possibility of injury. Discover hundreds of uses to organize your tools, materials, parts and accessories. Available in various sizes and colors upon request. Custom materials available; minimum run is required.

We use two 1/8" holes on a 3/4" center for all sizes, except 1/4" with a single hole, which needs a #6 panhead fastener. The other CLP clips require two #6 oval or flathead fasteners. Order by part number.

MODEL# BLACK	MODEL # WHITE	HOLDING RANGE
CLP 1/4	CLP 1/4W	1/4" TO 5/16"
CLP 1/2	CLP 1/2W	3/8" TO 1/2"
CLP 3/4	CLP 3/4W	5/8" TO 7/8"
CLP 1	CLP 1W	7/8" TO 1-1/2"
CLP 1-1/4	CLP 1-1/4W	1-1/8" TO 1-3/8"
CLP 1-1/2	CLP 1-1/2W	1-3/8" TO 1-5/8"
CLP 1-3/4	CLP 1-3/4W	1-5/8" TO 1-7/8"
CLP 2	CLP 2W	1-7/8" TO 2-1/8"



## SHIPMATE™ ICE PICK/PROBE by Beckson®



Shipmate's STAINLESS STEEL BLADE does not flex under normal use, so you can easily and safely split the smallest ice pieces. It's also a perfect hole starter and multi-purpose tool. The handle fits almost every hand size and is shaped to prevent accidental roll-off from counters and decks. The unbreakable handle is made of marine plastic for a lifetime of

trouble-free service. Overall length is 7". Blade is 4". Custom colors and logos on request. Call for pricing.

PART #	COLOR	DESCRIPTION
IPS01BL	BLUE	Stainless pick, sheath, 1 mounting clip, 2 screws, gift box
IPB01BL	BLUE	Pick w/sheath
IPM01BL	BLUE	Pick w/sheath, mounting clip, screws
IP-SHEATH	BLUE	Fully protects stainless pick during storage

## LIGHTWEIGHT WINCH HANDLES

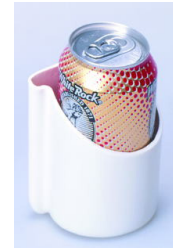
Non-corrosive Bernard Winch Handles are the perfect low cost alternative for any sailboat large enough to need winches. This handle is strong enough for most sailing conditions, but is not intended to replace metal handles needed when the going gets rough. Made of reinforced engineering-grade resins and aluminum, the handle is non-magnetic and will not rust. Available in both 8 inch (shown) and 10 inch lengths. Use part number to order.

PART #	COLOR	SIZE
WH-800	BLACK	8"
WH-1000	BLACK	10"



## SOFT-MATE® DRINK HOLDERS

Safety-soft flexible PVC prevents injuries while holding drinks and other items in place. Choose a convenient location and easily mount in place with screws. Both models are available in white as well as black.



**Soft Can Holder Model No. HH-6**  
Safety-soft flexible PVC prevents injuries. Designed to hold beverage cans, bottles, air horns, etc. Screws included for mounting.

4.50" (12.0 cm) Height  
3.00" (7.6 cm) Width  
2.75" (7.0 cm) Diameter



**Soft Can Holder Model No. HH-61**  
This is a two step model, molded from soft flexible PVC. The inner step holds cans and air horns like the HH-6, but the outer step holds cans with insulators, wine bottles, etc. Screws included for mounting.

5.00" (12.7 cm) Height  
3.00" (7.6 cm) Width  
3.50" (8.9 cm) Diameter

## COVER PLATES

Ideal for all types of cosmetic and/or retrofit applications, Bernard Cover Plates easily and quickly conceal holes on decks, instrument panels, etc. Molded of high impact white or black ABS plastic, Bernard Cover Plates are available to cover 3-1/2" or 5" openings. Use part number to order.



PART #	COLOR	HOLE SIZE	OD
M-10	WHITE	3-1/2"	4-1/2"
M-10-B	BLACK	3-1/2"	4-1/2"
M-12	WHITE	5"	6-1/2"
M-12-B	BLACK	5"	6-1/2"





## DOESN'T EVERYONE NEED A PANIC BUTTON?

It doesn't do anything, but you can tap it while you're trying to think what to do next. And those funny plaques you always laughed at on your friend's boat? They're made by Bernard.

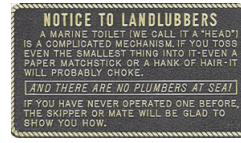
Gold foiling letters and borders on black ABS plastic, adhesive strips backing. Except as noted, 3-1/2" x 5"

Order by item number.

FP-001 (RED (2-1/2"x 3-3/4"))



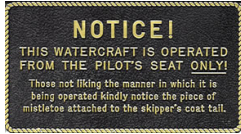
FP-002



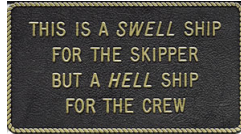
FP-003



FP-004



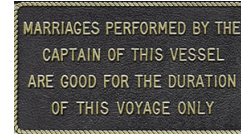
FP-005



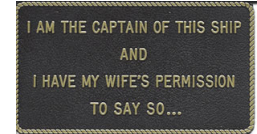
FP-006



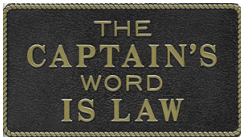
FP-007



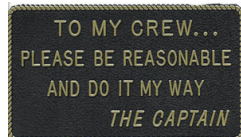
FP-008



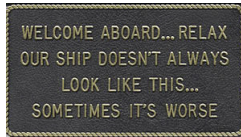
FP-009



FP-010



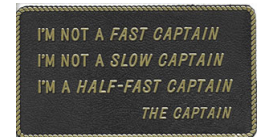
FP-011



FP-012



FP-013



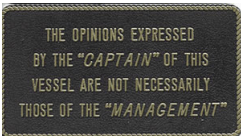
FP-014



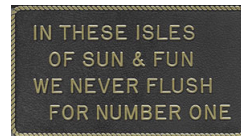
FP-015



FP-016



FP-017



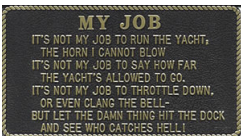
FP-018



FP-019



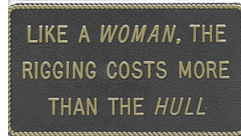
FP-020



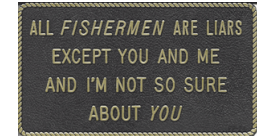
FP-021



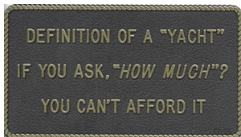
FP-022



FP-023



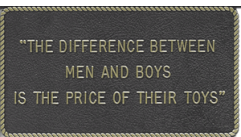
FP-024



FP-025



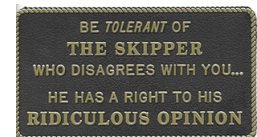
FP-026



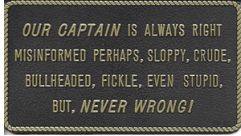
FP-027



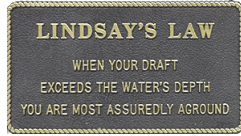
FP-028



FP-029



FP-030



FP-031



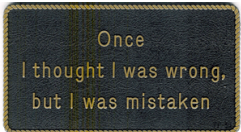
FP-032



FP-033



FP-034



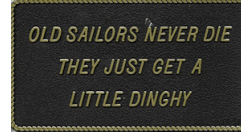
FP-035



FP-036



FP-037



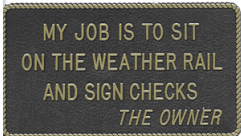
FP-038



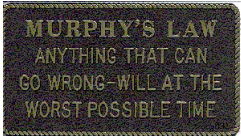
FP-039



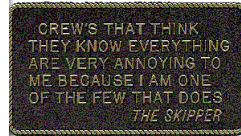
FP-040



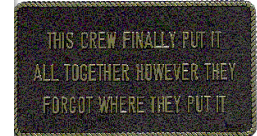
FP-041



FP-042



FP-043



FP-044



THE SKIPPER ONLY DOES  
TWO THINGS WRONG....  
EVERYTHING HE SAYS AND  
EVERYTHING HE DOES

FP-045

IT IS DIFFICULT  
TO SOAR WITH EAGLES  
WHEN YOU WORK  
WITH TURKEYS

FP-046

BOATING IS NOT A  
MATTER OF LIFE OR DEATH  
IT'S MORE IMPORTANT  
THAN THAT

FP-047

WE INTERRUPT THIS MARRIAGE  
FOR THE DURATION OF THE  
SAILING SEASON

FP-048

WE INTERRUPT THIS MARRIAGE  
FOR THE DURATION OF THE  
FISHING SEASON

FP-049

WHY BE DIFFICULT  
WHEN WITH A LITTLE  
MORE EFFORT YOU CAN  
BE IMPOSSIBLE

FP-050

NO MATTER WHERE  
YOU MAY ROAM  
THE BEST PART  
IS COMING HOME

FP-051

EARLY TO BED  
EARLY TO RISE  
FISH LIKE HELL  
AND MAKE UP LIES

FP-052

BOATS COME IN  
THREE DIMENSIONS  
LENGTH, WIDTH AND DEBT

FP-053

A BOAT IS A HOLE IN THE WATER  
SURROUNDED BY FIBERGLASS  
INTO WHICH YOU THROW MONEY

FP-054

IF GOD MEANT FOR US TO  
HAVE FIBERGLASS BOATS  
HE WOULD HAVE PLANTED  
FIBERGLASS TREES

FP-055

I'LL NEVER GET LOST  
EVERYONE TELLS ME  
WHERE TO GO

FP-056

WITH MY LUCK  
WHEN MY SHIP COMES IN  
I'LL BE AT THE AIRPORT

FP-057

TASKS WORTH DOING  
AND FRIENDS WORTH HAVING  
MAKE LIFE WORTH LIVING

FP-058

SOME MINDS  
ARE LIKE CONCRETE  
ALL MIXED UP  
AND PERMANENTLY SET

FP-059

**Taste  
Makes  
Waists**

FP-060

NOT EVEN ROBINSON CRUSOE  
COULD GET EVERYTHING  
DONE BY FRIDAY

FP-061

JUST WHEN YOU CATCH  
UP WITH THE JONESES  
THEY REFINANCE

FP-062

WE INTERRUPT THIS  
MARRIAGE TO BRING YOU  
THE FOOTBALL SEASON

FP-063

DON'T LOSE YOUR HEAD  
TO GAIN A MINUTE  
YOU NEED YOUR HEAD  
YOUR BRAINS ARE IN IT

FP-064

ITS NO LONGER  
A SIN TO BE RICH  
ITS A MIRACLE

FP-065

SOCCER IS NOT A  
MATTER OF LIFE OR DEATH  
IT'S MORE IMPORTANT  
THAN THAT

FP-066

THIS BOAT  
RUNS ON GAS  
NOT THANKS

FP-067

TENNIS  
IS MY RACKET

FP-068

**GOLFING  
LINKS FRIENDS**

FP-069

**GOD LOVES YOU  
AND I'M TRYING**

FP-070

**NURSES  
HAVE PATIENCE**

FP-071

**TEACHERS  
HAVE CLASS**

FP-072

COMPLAINTS WILL  
BE CAREFULLY IGNORED

FP-073

**HAPPINESS  
IS HOMEMADE**

FP-074

**World's  
Greatest  
Mom**

FP-075

**World's  
Greatest  
Dad**

FP-076

**SUPER  
SECRETARY**

FP-077

**LEFT HANDED  
GENIUS**

FP-078

**I FORGOT  
TO REMEMBER**

FP-079

**Damn,  
I'm Good**

FP-080

**SUPER MOM  
WORKS HERE**

FP-081

**OVERWORKED  
AND UNDERPAID**

FP-082

HAPPINESS IS  
BEING A GRANDPARENT

FP-083

FAST LIVING AND FAST  
DRIVING MAY GET YOU TO  
THE FINISH LINE TOO SOON

FP-084

THERE IS NO RIGHT WAY  
TO DO A WRONG THING.

FP-085

WANTED  
A GOOD WOMAN WHO  
CAN CLEAN AND COOK FISH,  
DIG WORMS, AND OWNS  
BOAT, MOTOR AND TRAILER.  
SEND PICTURE OF BOAT

FP-086

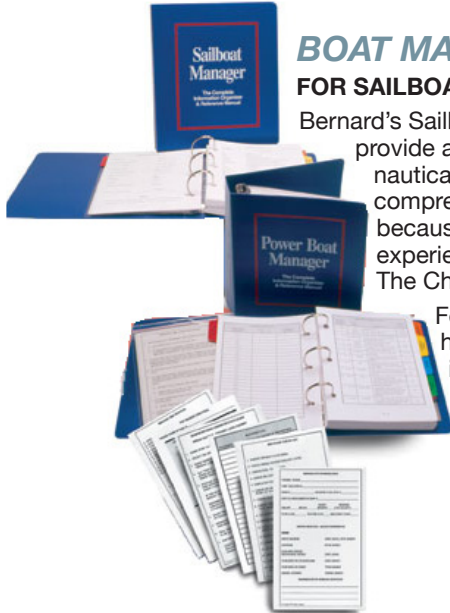
MY WIFE TOLD ME SHE  
WOULD LEAVE ME IF I  
DIDN'T GIVE UP FISHING.  
DAMN I AM GOING TO  
MISS THAT GIRL

FP-087

A BAD DAY ON THE BOAT  
IS BETTER THAN THE  
BEST DAY AT WORK

FP-088





## BOAT MANAGERS' LOG BOOKS FOR SAILBOATS OR POWERBOATS

Bernard's Sailboat Managers and Powerboat Managers provide a wealth of information about boating safety, nautical references, and maintenance. They are the most comprehensive manuals available on the market today because you complete them. For both beginners and experienced boaters, they are a must! Perfect for The Charter Fleet.

Features include: indestructible poly cover, hard back writing surface, complete U.S and international reference materials, coded chapter tabs, laminated quick reference pull-out cards, and convenient size for easy storage and access. Cover size: 8-1/4" by 9-3/4" Page size: 6" x 9".

### Core Contents in Both Manuals Include:

- Piloting, including basic instruction
- Owner Information
- Crew Information
- Medical History/Information/Supplies
- Vessel Information
- Required Documentation
- Inventory and Locations
- Maintenance Log
- Telephone Information
- Sails and Rigging\*

\* Sailboat Manager Only

**ML-SBMGR** Sailboat Manager  
**ML-PBMGR** Motorboat Manager

### Quick Reference Cards Include:

- Sound signals: bridge, dock, turning, etc.
- Sound signals for restricted visibility such as fog
- Fire, leaks, and overboard procedures
- Distress communication guide
- VHF channel guide
- Waypoint log for 40+ locations
- Pre-arrival checklist for anchoring and docking\*
- Cruising checklist\*
- Trimming\*



## 400 SERIES SPIRAL BOUND FLEXIBLE VINYL COVER

- MM403 SHIP'S LOG**
- MM402 GUEST LOG**
- MM401 RADIO LOG**
- MM406 GPS/LORAN LOG**

Same format as 300 Series. Ship's Log for recording all information about your trips. Sturdy flexible vinyl cover. Cover size: 8-1/2" x 11" Cover Color: Navy

## GPS/REGISTER

HALF-SIZED 8-1/2" x 5-1/2"

Ensure against memory loss. Back up your waypoint storage in hard copy. Laminated Plastic Cover Color: Navy  
**MM 506 GPS/REGISTER**



## 200 SERIES

### HARDBOUND SEWN GPS LOG

Formatted for the modern navigator. Pages for recording information about your boat operation and voyages. Trip log, radio use, maintenance, etc

Cover size: 8-12" x 11"  
Color: Navy  
**MM 206 GPS LOG**



## 300 SERIES

### MULTI-RING LOOSE-LEAF COMBINATION LOG BOOK

Easily record all information about your voyage and boat operation: trip log, radio use, maintenance, guest register, business use. Practical and attractive padded vinyl cover. Refillable.

Cover size: 8-1/2" x 11"  
Cover Color: Navy  
**MM303** Combination Logbook  
**MM304 REFILL PAGE SET:**  
30 assorted pages



## 500 SERIES

### SMALL CRAFT LOG

HALF-SIZED 8-1/2" x 5-1/2"

Record all your information in a smaller format, convenient for smaller boats. Laminated Plastic Cover Color: Navy  
**MM 503 SMALL CRAFT LOG**

