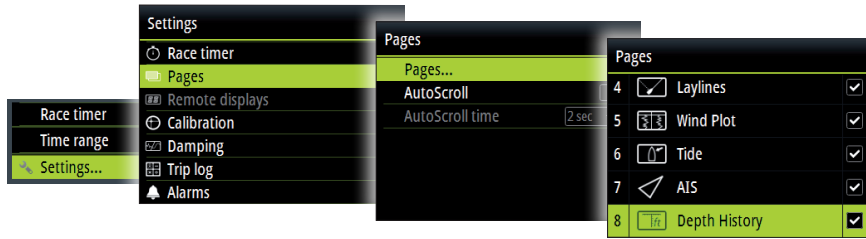
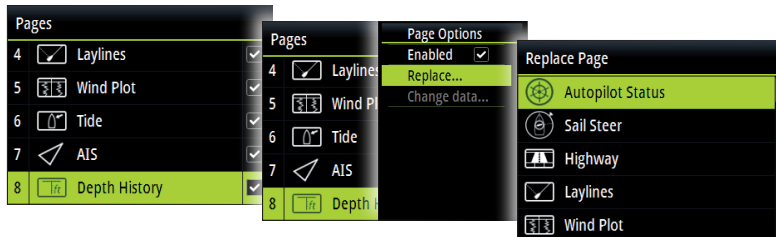


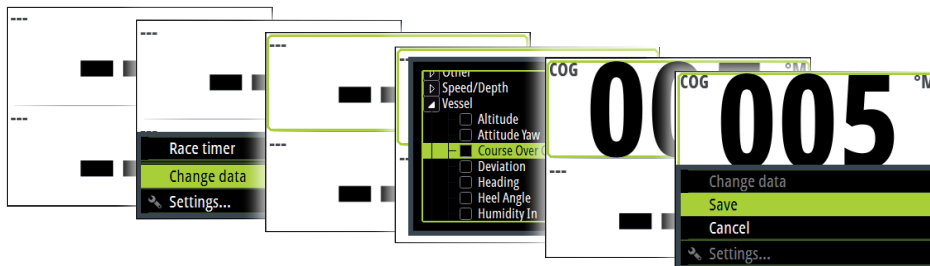
Enabling/Disabling pages



Replacing a page

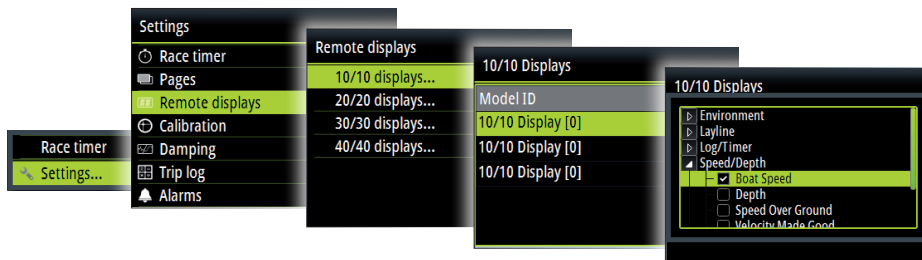


Creating custom pages



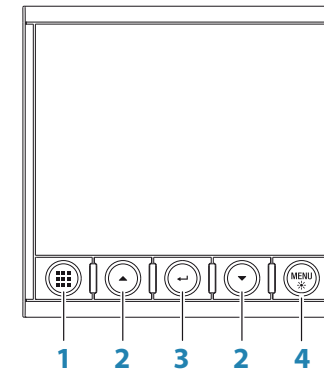
➔ **Note:** You can only change the data on custom pages.

Remote display data selection



Triton² Display

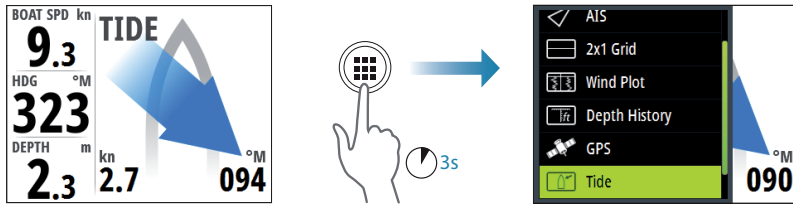
Quick Guide



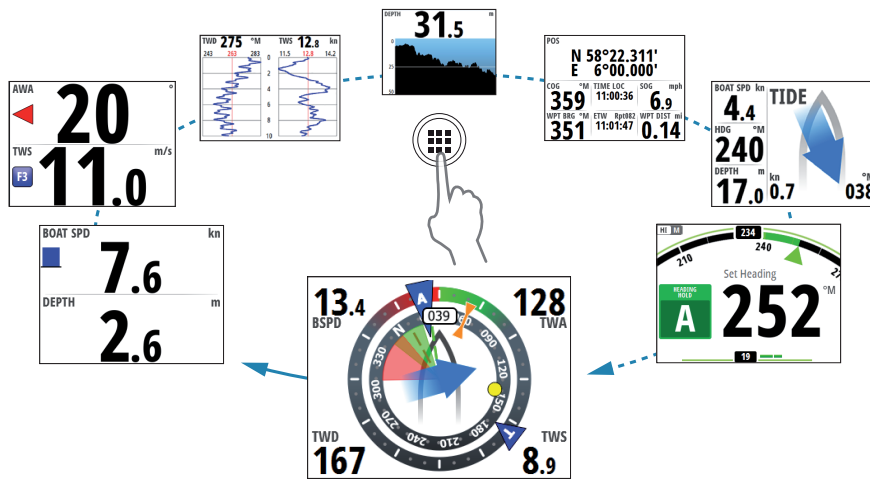
1	<p>Pages key</p> <p>With no menu active:</p> <ul style="list-style-type: none"> • Press to scroll through the enabled data pages • Press and hold to display a list of enabled pages from where you can select directly the page to display <p>Menu and dialog operation: Press to return to previous menu level or to exit a dialog.</p>
2	<p>Arrow keys</p> <p>Press to move up and down in menus and dialogs. Press to adjust a value.</p>
3	<p>Enter key</p> <p>Press to select a menu option and enter the next menu level. Press to activate/deactivate a menu/dialog option.</p>
4	<p>MENU/Backlight key</p> <p>Press once to display the page menu. Double-press to display the Settings menu. Press and hold to show the Display setup dialog.</p>

Selecting a data page

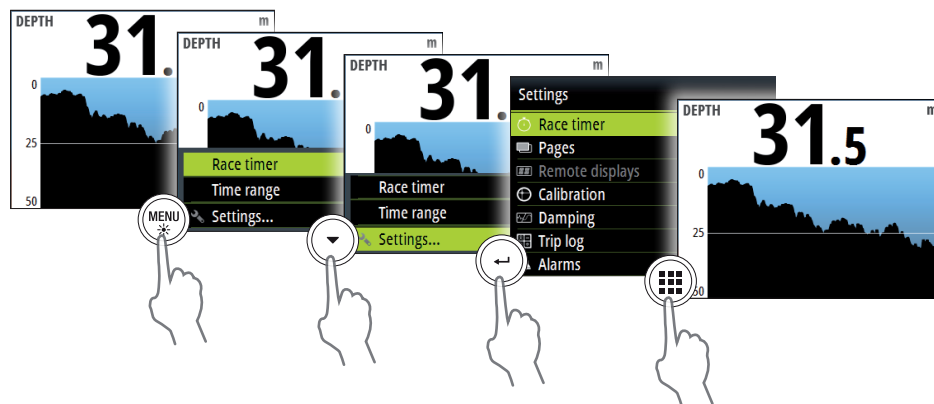
Directly selecting a page



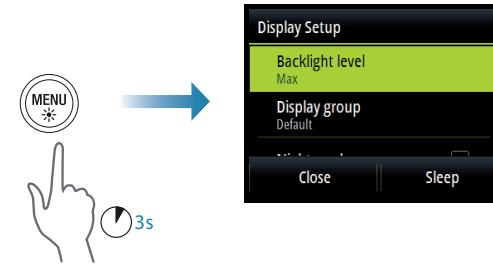
Scrolling through enabled data pages



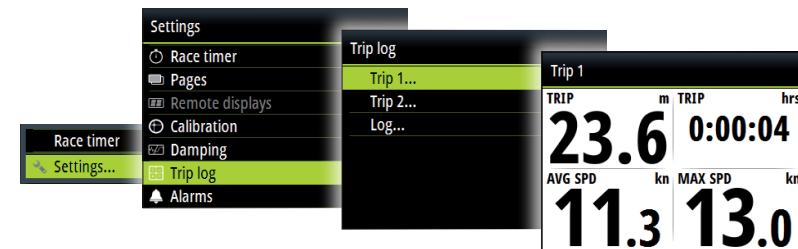
Menu navigation



Display setup

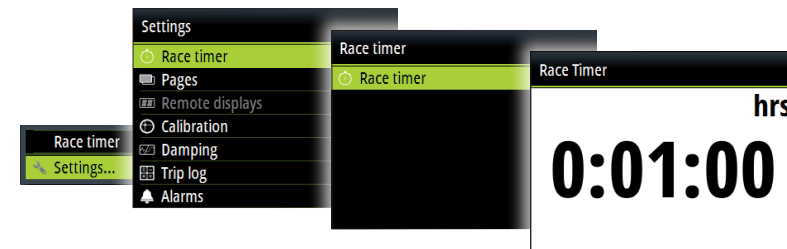


Trip log

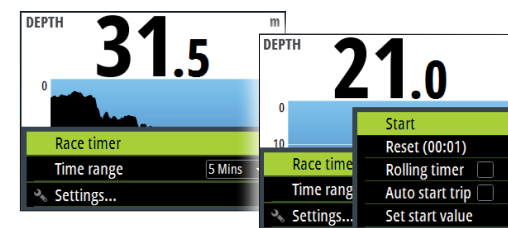


Race timer

Display Race timer



Start/Stop Race timer



Accept no compromises, choose only quality marine electronics and navigation.