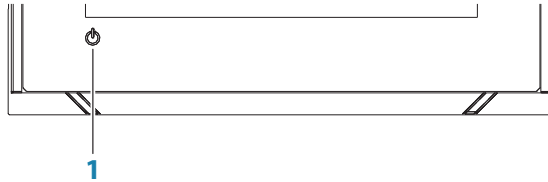


Front panel



No.	Key	Function
1	Power	Press and hold to turn the unit ON/OFF. Press once to display the System control dialog.

The System controls dialog

Used for quick access to system settings.

Activate the dialog by:

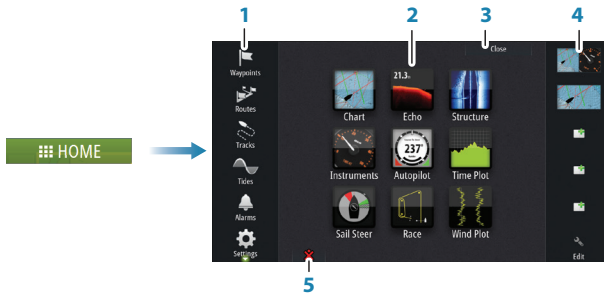
- Pressing the **Power** key.
- Swiping from the top of the screen.



➔ **Note:** The icons displayed on the dialog can vary. For example, the adjust splits option is only available if you are viewing a split page when you open the **System controls** dialog.

The Home page

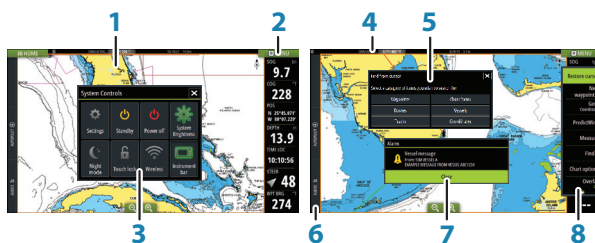
Accessed from any operation by selecting the home button in the upper left corner of a panel.



No.	Item	Function
1	Tools	Select a button to access dialogs used for carrying out a task, or for browsing stored information.
2	Applications	Select a button to display the application as a full page panel. Press and hold a button to display pre-configured split page options for the application.
3	Close button	Select to exit the home page and return to the previous active page.
4	Favorites	Select a button to display the panel combination. Press and hold a favorite button to enter edit mode for the Favorites panel.
5	Man Over Board (MOB) button	Select to save a Man Over Board (MOB) waypoint at the current vessel position.

Application pages

Each application connected to the system is presented on panels. All application pages are accessed from the Home page.

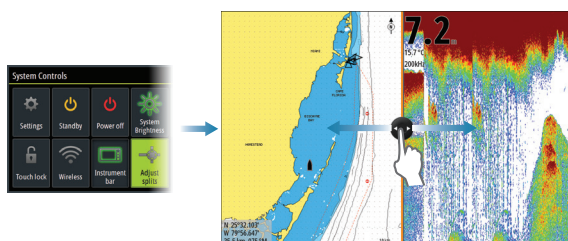


No.	Item
1	Application panel
2	Instrument bar
3	System controls dialog
4	Status bar
5	Dialog
6	Control bar
7	Alarm message
8	Menu

Adjust panel size

Change the panel size for an active split page.

1. Activate the **System controls** dialog
2. Select the adjust splits option in the dialog
3. Adjust the panel size by dragging the adjustment icon
4. Confirm your changes by tapping one of the panels or selecting the save option in the menu



Charts

- Zoom the chart by using spread or pinch gestures or by using the zoom buttons (+ or -) (A).
- Move the view in any direction by panning the chart.
- Display information about a chart item by tapping the item.



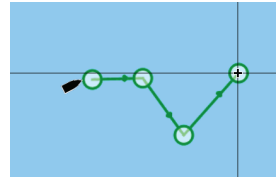
Waypoints

Save a waypoint at a selected location by positioning the cursor on the panel, and then selecting the new waypoint option in the menu.

Routes

To create a route:

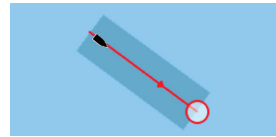
1. Activate the cursor on the chart panel
2. Select the new route option in the menu
3. Tap the chart to position the first waypoint
4. Continue tapping the screen to position additional waypoints
5. Save the route by selecting the save option from the menu



Navigating

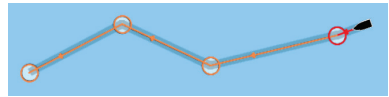
To navigate to cursor position:

1. Position the cursor at the selected destination on the panel
2. Select the goto cursor option in the menu



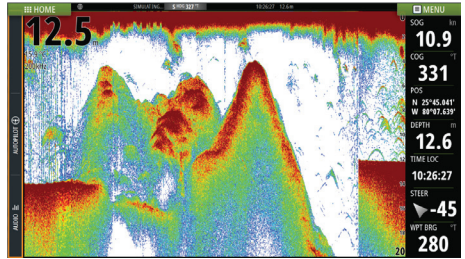
Navigate a predefined route by doing one of the following:

- Tap the route to make it active, then select the start option in the menu.
- Select the route from the Routes dialog, then select the start option in the dialog.



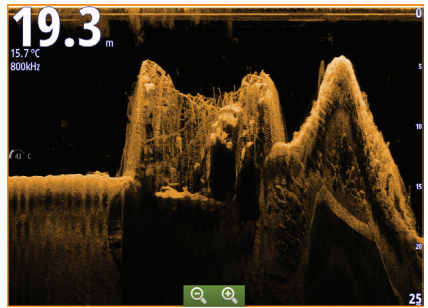
Echosounder

- Zoom the image by using the zoom buttons (+ or -).
- View echosounder history by panning the image.
- Adjust gain and color using the slide bar in the menu.
- Toggle auto gain ON/OFF from the menu.

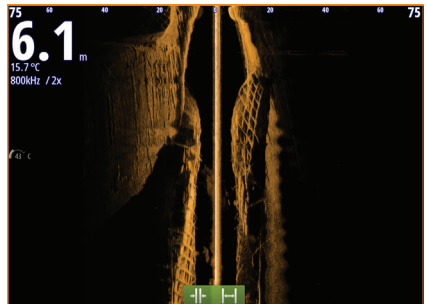


StructureScan

- Select DownScan or left/right side scanning view from the menu.
- Zoom a StructureScan image by using the panel zoom buttons (+ or -).
- Pan the image history by dragging up/down (SideScan) or left/right (DownScan).
- Adjust the contrast setting:
 1. Select the contrast icon or activate the contrast option in the menu to display the color adjustment bar
 2. Drag the bar up or down to get the desired contrast setting or select auto contrast
- Toggle between available StructureScan frequencies from the menu.



DownScan

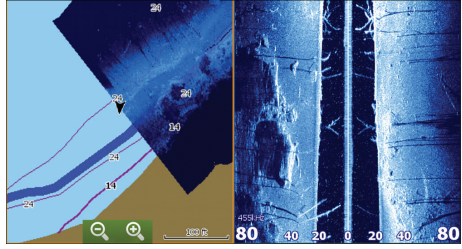


SideScan

455 kHz	provides ideal range and image quality in most situations
800 kHz	provides higher detail in shallow water

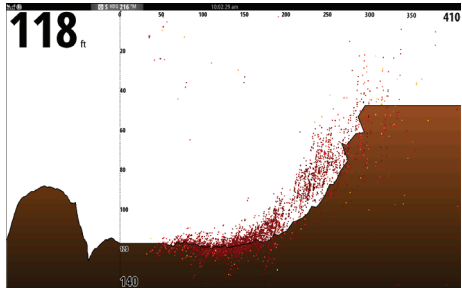
StructureMap

- Turn on StructureMap overlay from the chart menu.
- Adjust the StructureMap settings from the Structure options menu.



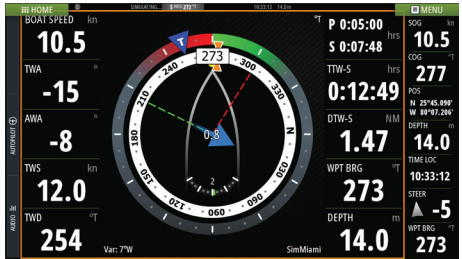
ForwardScan

- Adjust depth, range and noise rejection from the menu.
- Start recording ForwardScan logs from the menu.
- Use the heading extension to monitor ForwardScan on the chart panel. Heading extension colors are based on the ForwardScan alarm values.



SailSteer panel

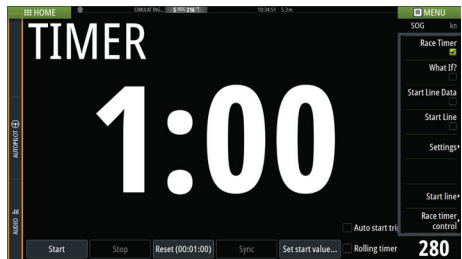
SailSteer provides a composite view of key sailing data. All data is displayed relative to the yacht's bow. The number of data fields included in the panel is dependant on available panel size.



Race panel

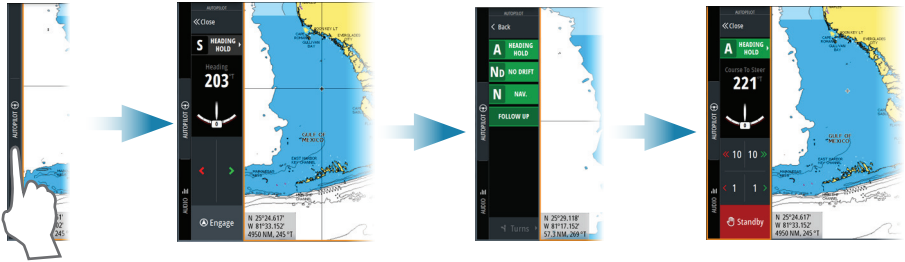
Use the Race panel to:

- Display and control the race timer.
- Create and manage the race start line.
- Display race start line data.
- Display the race start line in a chart diagram on the Race panel.
- Display tactical information for the current leg or next leg



Autopilot

Activate the autopilot from any panel by selecting the autopilot option in the Control bar, followed by selecting a mode in the Autopilot controller.



S	Standby	Autopilot is passive. Used when manually steering at the helm.
FU	Follow-up	Manual steering using the rotary knob on a remote autopilot controller to control the rudder angle.
NFU	Non-Follow-up	Manual steering. The rudder movement is controlled by the port and starboard buttons in the autopilot controller, or by another NFU unit.
A	Auto	Automatic steering, maintaining the set heading.
Nd	NoDrift	Automatic steering, keeping the vessel on a straight bearing line by compensating for drift.
N	Navigation	Automatic steering, navigating the vessel to a specific waypoint or through a route using GPS data.
W	Wind *	Automatic steering, maintaining the set wind angle.
WN	Wind navigation *	Automatic steering, navigating the vessel to a specific waypoint or through a route using both wind and GPS data.

* Only available if the boat type is set to SAIL.

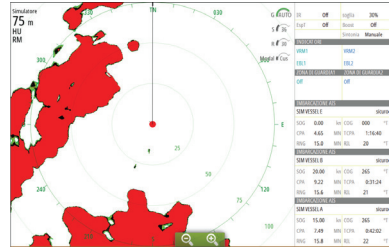
Switching from automatic mode to manual steering

Switch the autopilot to Standby mode from any automatic operation mode from the Autopilot controller or by using a physical **Standby** key.

Radar

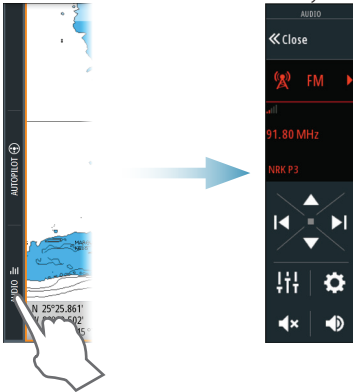
Not available on the 5" units.

- Turn the radar transmitting on/off from the menu.
- Adjust radar range by using the zoom buttons (+ or -) on the radar panel.



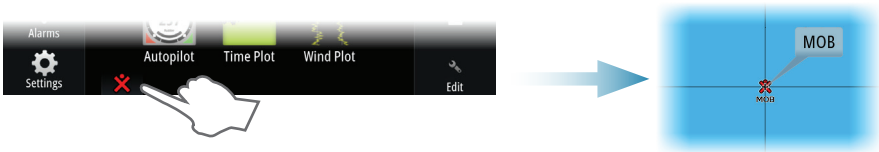
Audio

Activate the Audio controller by selecting Audio in the Control bar.



Positioning a MOB mark

Save a Man Over Board (MOB) mark at vessel position by tapping the MOB button on the Home page.



Viewing the manual on the screen

Select the PDF file in the Files panel and then the view option in the dialog.

For more details, see the Vulcan Series Operator manual.

