



A Boeing Company

Wherever and however you find adventure on the water, C-MAP has a solution that's designed for you. C-MAP covers the world with accurate, up-to-date electronic charts, Value Added Data & Services that let you sail safely to distant horizons, fill the boat with fish, or cruise with confidence. C-MAP cartography is compatible with the latest navigation systems offered by the world's top manufacturers.



C-MAP ELECTRONIC CHARTS, DATA AND SERVICES HELP YOU...

SAIL SAFELY

With detailed, up-to-date chart coverage across the seven seas, specialized, information-packed charts for the Bahamas, raster charts that “come alive,” or our proprietary C-Marina charts, C-MAP gives you the power to sail safely anywhere the wind leads you. These features and many more have been developed to meet the navigation needs of sailors worldwide, whether they race competitively or in clubs, voyage across oceans or just explore their own home waters. Compatible with many popular chartplotters and PC navigation software solutions, C-MAP charts make sailing a breeze.

CATCH MORE FISH

Smart fishermen take full advantage of today's high-tech tools — like an advanced chartplotter/fishfinder combo powered by the latest C-MAP charts. In coastal or offshore waters, C-MAP gives you maximum detail of the ledges, canyons, channels, drop-offs and other features that draw gamefish like magnets. Our High-Resolution Bathymetric (HRB) charts provide amazing detail. Nobody can match our variety of sportfishing Value Added Data, like Fish ID photos, updated catch limits, regulations and state records, locations and data on thousands of wrecks, reefs and other “fishy” spots, updated Marine Protected Area information, and more. Better fishing begins with a compatible multifunction display and C-MAP charts.

CRUISE CONFIDENTLY

C-MAP charts make navigation simple — so you can focus on the fun and adventure of the cruising lifestyle. Innovative features like Easy Routing and Guardian Anti Grounding make route planning and safe navigation easy, and take the worry out of exploring new waters. High-Resolution harbor charts and aerial imagery for harbors and inlets boost your confidence and make every port like your home port. C-MAP offers detailed, updated coverage for the most popular cruising regions including the ICW, Great Lakes/Great Loop, the Bahamas, all U.S. coastal waters and anywhere else in the world. The shortest route to cruising adventure starts with C-MAP.

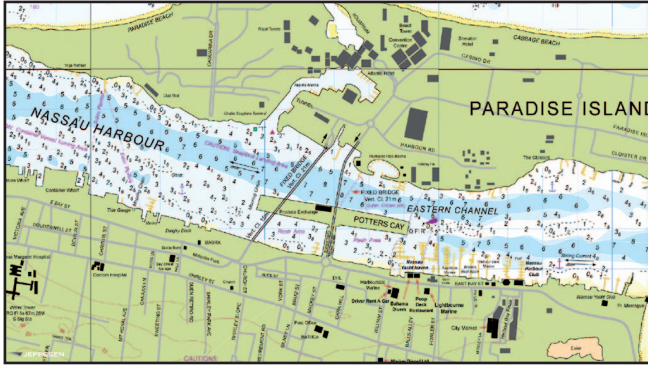
C-MAP 4D

for Furuno, Humminbird, Raymarine & Standard Horizon



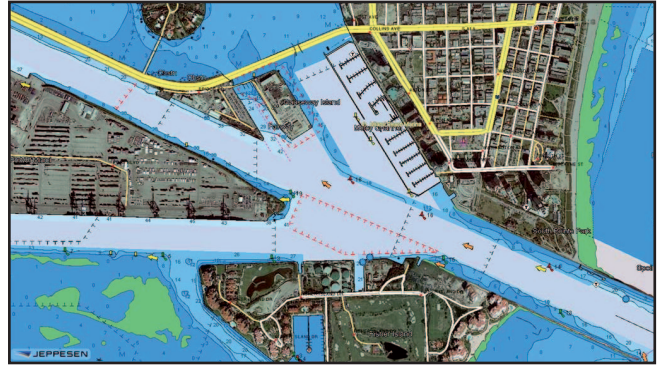
CHARTS THAT ENHANCE YOUR BOATING LIFESTYLE

C-MAP 4D is the latest evolution of electronic charting technology, combining award-winning vector charts with exclusive Dynamic Raster charts, Easy Routing, High-Resolution Satellite images and the ability to view charts in amazing 3D presentation. Compatible with select chartplotters from Furuno, Humminbird, Raymarine and Standard Horizon, C-MAP 4D is packed with features designed to enhance every cruising, fishing or sailing experience.



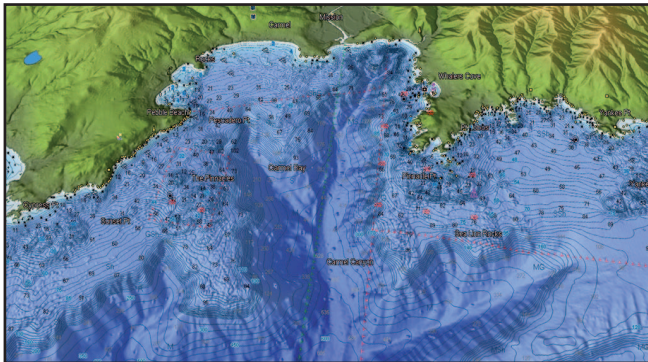
C-MAP 4D MAX+ - Dynamic Raster Charts

Traditional "paper chart" look with the unique ability to access information on buoys, lights and other details.



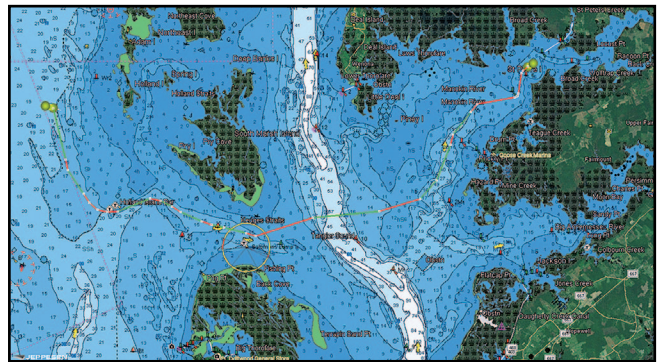
C-MAP 4D MAX+ - High-Resolution Satellite Imagery

High-Resolution satellite imagery provides real-world reference, enhances situational awareness for coastal navigation.



C-MAP 4D MAX+ - 3D-View

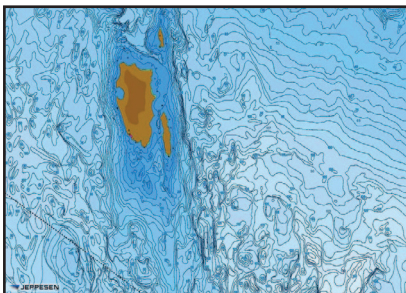
Stunning three-dimensional views of land elevation and bottom contours bring the world around (and under) your boat to life.



C-MAP 4D MAX+ - Easy Routing*

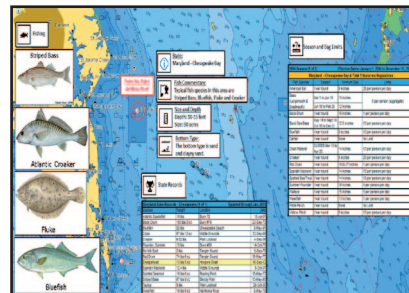
Automatically plots the shortest, safest route based on detailed chart data and user vessel information.

C-MAP 4D CAN ALSO BE ENHANCED WITH HIGH-RESOLUTION BATHYMETRIC AND SPORT FISHING VALUE ADDED DATA.



High-Resolution Fishing Charts

add a specialized layer of bathymetric data that provides the most detailed profile of the ocean bottom, allowing you to spend more time on the water catching fish.



Sport Fishing Data gives you the most up-to-date fishing hot spots, artificial reefs, wrecks, obstructions, rules and regulations on thousands of locations.

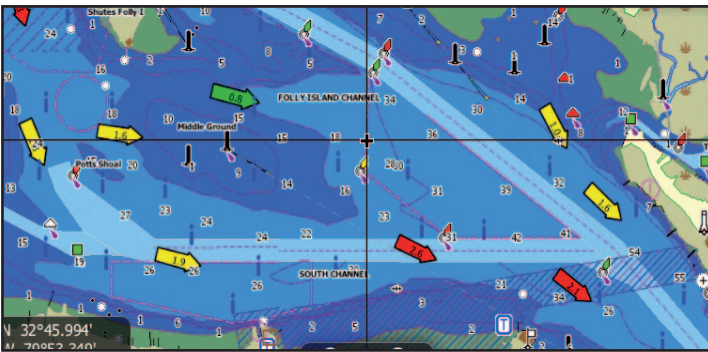
Additional lower price and content options available with C-MAP 4D MAX. *Available only in select models.

C-MAP MAX-N+

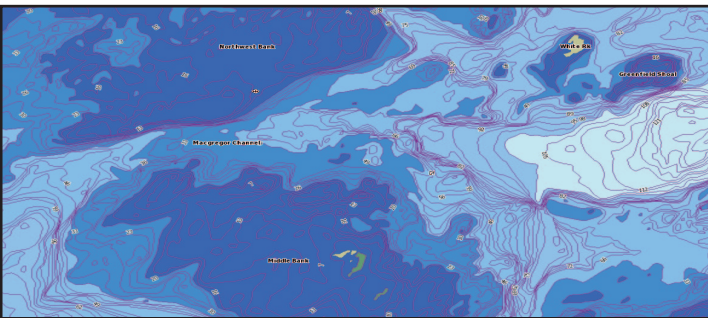
for Lowrance, Simrad and B&G

C-MAP MAX-N+ cartography gives Lowrance, Simrad and B&G customers access to accurate, up-to-date C-MAP chart data, and opens up a new world of performance for cruisers, sailors and fishermen, providing the detail, advanced features and coverage to fuel every boating adventure.

C-MAP MAX-N+ is also compatible with Navico's Insight Genesis, giving you the power to create custom maps from sonar. *For a limited time, every MAX-N+ purchase comes with a free 1-year subscription to Insight Genesis.*



C-MAP MAX-N+ - Tides & Currents



C-MAP MAX-N - High-Resolution Bathymetric Charts



C-MAP MAX-N+ - Harbor and Approach Details

C-MAP MAX

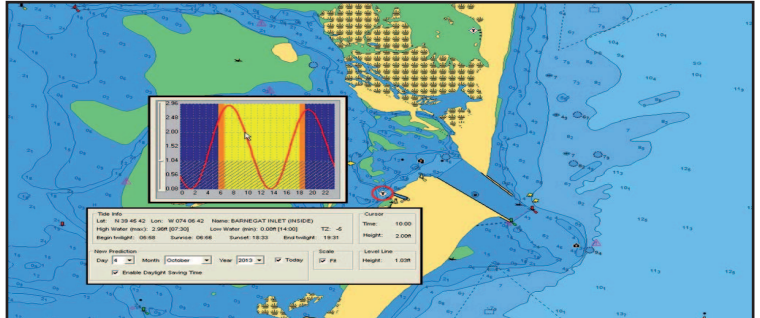
for Furuno, Si-Tex and Standard Horizon

C-MAP MAX offers extensive Worldwide coverage of coastal waters, offshore waters and lakes, and is compatible with dozens of chartplotters from top manufacturers. With C-MAP MAX, you'll benefit from the most versatile features and a wealth of important data, including:

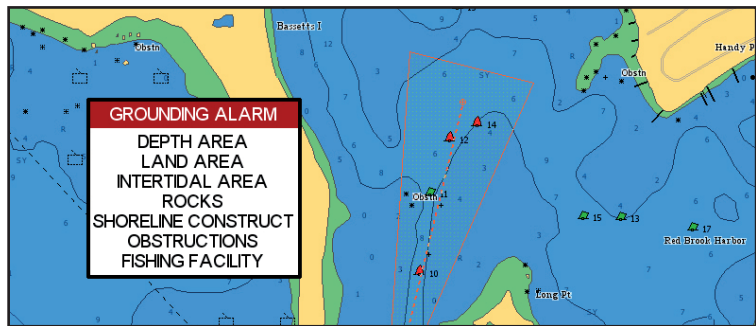
- Dynamic NavAids
- Tides and Currents
- Guardian Alarm
- Detailed Marina Port Plans



C-MAP MAX - Detailed Marina Port Plans



C-MAP MAX - Tide & Current Predictions

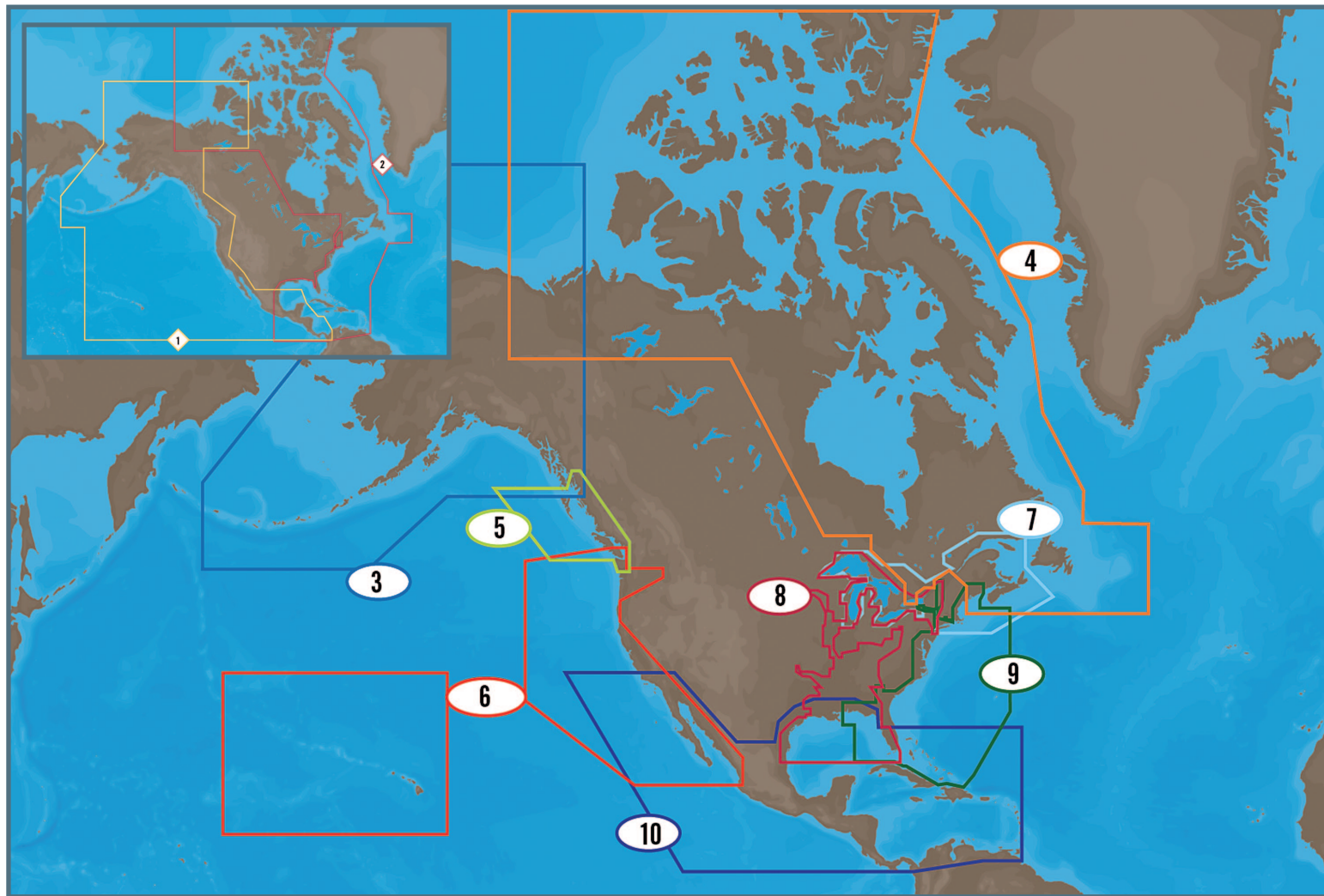


C-MAP MAX - Guardian Alarm

C-MAP MAX-N+ is compatible with Lowrance HDS GEN 3, GEN 2 / GEN 2 TOUCH, Simrad NSS EVO 2 & NSE EVO 2 and B&G Zeus 2. C-MAP MAX-N is also available for Lowrance Elite series, Simrad NSS/NSE and B&G Zeus Touch.

MEGAWIDE & WIDE COVERAGE

C-MAP 4D, MAX-N+ & MAX



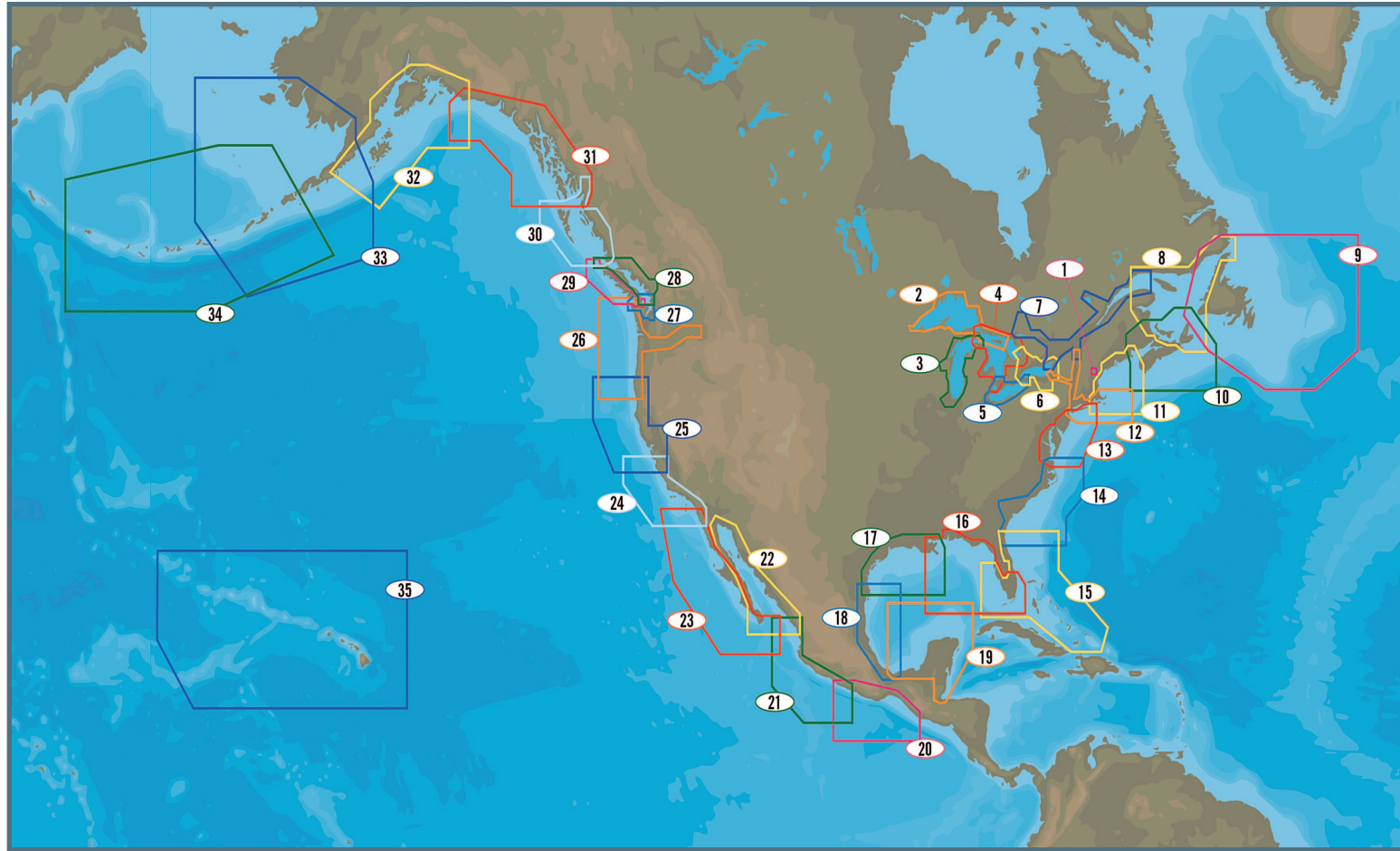
	Title	Price Class	C-MAP 4D MAX+	C-MAP MAX-N+	C-MAP MAX
1	Pacific Coast and Central America	Megawide	n/a	n/a	NA-M035
2	Atlantic Coast, Gulf of Mexico and the Caribbean	Megawide	n/a	n/a	NA-M033
*	South America and South Caribbean Sea	Megawide	n/a	n/a	SA-M504
3	Alaska	Wide	NA-D028	NA-Y028	NA-M028
4	Canada North and East	Wide	NA-D021	NA-Y021	NA-M021
5	Canada West and Puget Sound	Wide	NA-D025	NA-Y025	NA-M025
6	U.S. West Coast and Hawaii	Wide	NA-D024	NA-Y024	NA-M024
7	Great Lakes, Northeast Coast and Approaches	Wide	NA-D026	NA-Y026	NA-M026
8	U.S. Gulf of Mexico, Inland Rivers and the Great Lakes	Wide	n/a	NA-Y023	NA-M023
9	U.S. East Coast and the Bahamas	Wide	NA-D022	NA-Y022	NA-M022
10	Central America and the Caribbean	Wide	NA-D027	NA-Y027	NA-M027
*	Costa Rica to Chile and the Falklands	Wide	SA-D500	SA-Y500	SA-M500



***Promotional Pricing valid January 1, 2015 - June 30, 2015 for C-MAP 4D MAX+ Wide and MAX Megawide.**

LOCAL COVERAGE

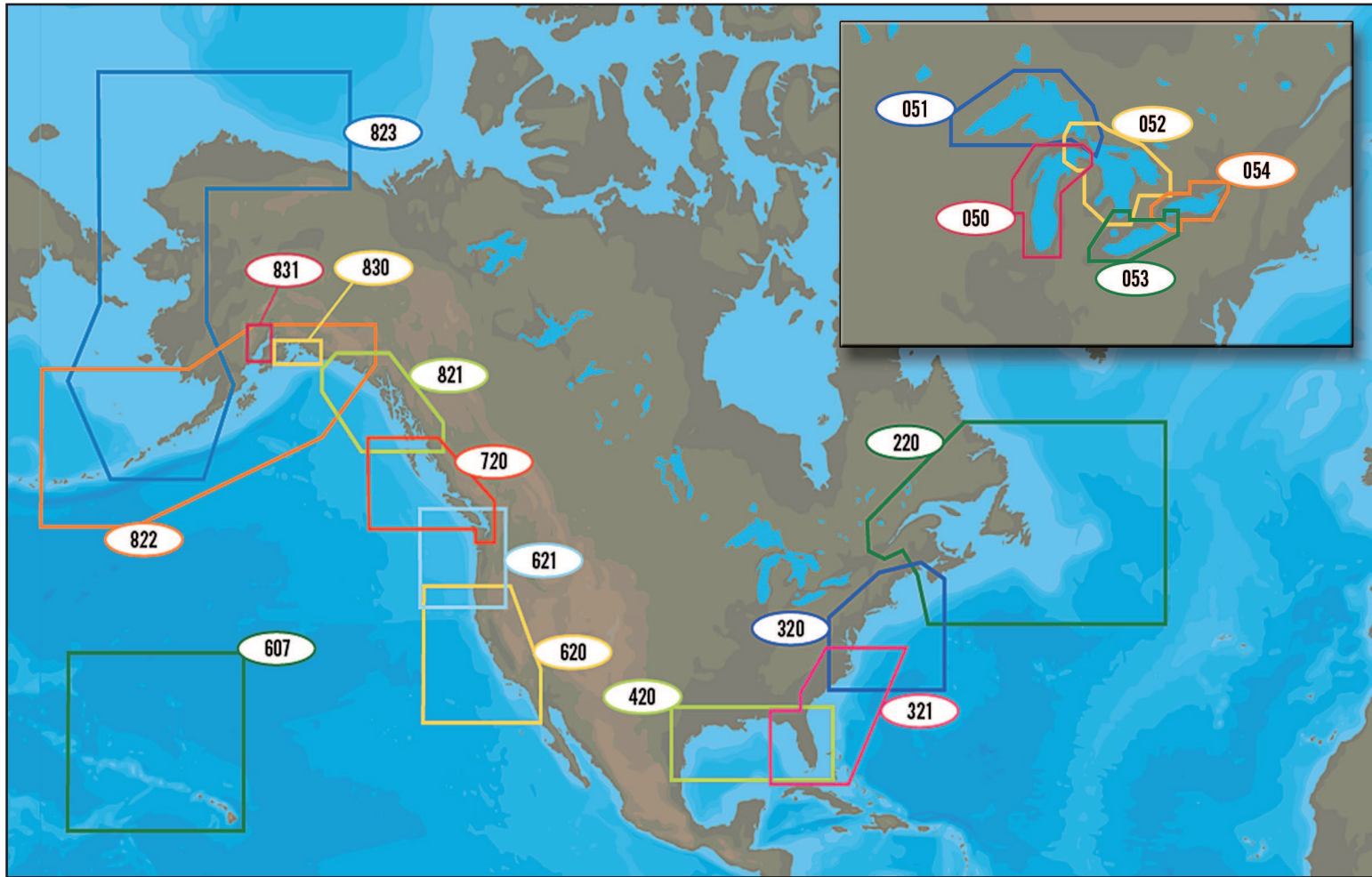
C-MAP 4D, MAX-N+ & MAX



	Title	C-MAP 4D	C-MAP MAX-N+	C-MAP MAX
1	Lake Winnepesaukee	n/a	NA-Y121	NA-M121
2	Lake Superior	NA-D930	NA-Y930	NA-M930
3	Lake Michigan	NA-D931	NA-Y931	NA-M931
4	Lake Huron and Georgian Bay	NA-D932	NA-Y932	NA-M932
5	Lake Erie and Lake St. Clair	NA-D933	NA-Y933	NA-M933
6	Lake Ontario & Trent Severn Waterway	NA-D934	NA-Y934	NA-M934
7	St. Lawrence River	NA-D935	NA-Y935	NA-M935
8	Gulf Of St. Lawrence	NA-D936	NA-Y936	NA-M936
9	Newfoundland	NA-D937	NA-Y937	NA-M937
10	Fundy, Nova Scotia PEI & Cape Breton	NA-D938	NA-Y938	NA-M938
11	Passamaquoddy Bay to Block Island	NA-D939	NA-Y939	NA-M939
12	Cape Cod, Long Is. & Hudson River	NA-D940	NA-Y940	NA-M940
13	Block Island to Norfolk	NA-D941	NA-Y941	NA-M941
14	Norfolk to Jacksonville	NA-D942	NA-Y942	NA-M942
15	Florida and the Bahamas	NA-D943	NA-Y943	NA-M943
16	St. Lucie Inlet to New Orleans	NA-D944	NA-Y944	NA-M944
17	New Orleans to Brownsville	NA-D945	NA-Y945	NA-M945
18	Brownsville, TX to Coatzacoalcos, MX	NA-D946	NA-Y946	NA-M946

	Title	C-MAP 4D	C-MAP MAX-N+	C-MAP MAX
19	Coatzacoalcos, MX to Honduras Bay, GT	NA-D947	NA-Y947	NA-M947
20	Champerico, GT to Acapulco, MX	NA-D948	NA-Y948	NA-M948
21	Acapulco, MX to Mazatlan, MX	NA-D949	NA-Y949	NA-M949
22	Gulf of California, Mexico	NA-D950	NA-Y950	NA-M950
23	Cabo San Lucas, MX to San Diego	NA-D951	NA-Y951	NA-M951
24	San Diego to Santa Cruz	NA-D952	NA-Y952	NA-M952
25	Point Sur to Cape Blanco	NA-D953	NA-Y953	NA-M953
26	Cape Blanco to Cape Flattery	NA-D954	NA-Y954	NA-M954
27	Puget Sound, Juan De Fuca & San Juan	NA-D955	NA-Y955	NA-M955
28	Victoria, BC to Cape Scott	NA-D956	NA-Y956	NA-M956
29	San Juan Islands to Nigei Island	NA-D957	NA-Y957	NA-M957
30	Queen Charlotte SD to Dixon Entrance	NA-D958	NA-Y958	NA-M958
31	Dixon Entrance to Cape St. Elias	NA-D959	NA-Y959	NA-M959
32	PWS, Cook Inlet and Kodiak Island	NA-D960	NA-Y960	NA-M960
33	Bristol Bay to Amukta Pass	NA-D961	NA-Y961	NA-M961
34	Unimak Pass to Attu Island	NA-D962	NA-Y962	NA-M962
35	Hawaiian Islands	NA-D963	NA-Y963	NA-M963
*	Rio de Janeiro to Porto Alegre	SA-D900	SA-Y900	SA-M900
*	Porto Alegre to Rio de la Plata	SA-D901	SA-Y901	SA-M901

C-MAP HIGH-RESOLUTION BATHYMETRIC CHARTS



	Title	C-MAP MAX-N	C-MAP MAX		Title	C-MAP MAX-N	C-MAP MAX
220	Nova Scotia to Newfoundland	NA-N220	NA-M220	822	AK: Yukatat Bay to Bristol Bay	NA-N822	NA-M822
320	Passamaquoddy Bay to Cape Lookout	NA-N320	NA-M320	823	AK: Bristol Bay to Demarcation Bay	NA-N823	NA-M823
321	Cape Henry to Cape Apalachicola	NA-N321	NA-M321	830	Prince William Sound*	n/a	NA-M830
420	Gulf of Mexico	NA-N420	NA-M420	831	Cook Inlet*	n/a	NA-M831
607	Musicians Seamounts and Hawaii	NA-N607	NA-M607	050	Lake Michigan	NA-N050	NA-M050
620	San Diego to Cape Blanco	NA-N620	NA-M620	051	Lake Superior	NA-N051	NA-M051
621	Cape Blanco to Puget Sound	NA-N621	NA-M621	052	Lake Huron	NA-N052	NA-M052
720	BC: Juan De Fuca to Dixon Entrance	NA-N720	NA-M720	053	Lake Erie and Lake St. Clair	NA-N053	NA-M053

C-MAP 4D High-Resolution Bathymetric chart data is available in 4D Wide and Local titles as a Value Added Data Layer.
 C-MAP MAX-N Bathymetric charts are compatible with MAX-N+ chart plotters.

CHART COMPATIBILITY



C-MAP COMPATIBLE CHART PLOTTERS

PLOTTER MAKE		PLOTTER MODEL	MEDIA TYPE	COMPATIBLE CHARTS
Furuno		Navnet 3D	Internal Database	MM3D
		TZtouch	Internal Database	MM3D
		Navnet VX2 GP-1720 & 1920C	SD-card	MAX
		Navnet VX2 RDP 148 & 149	SD-card	MAX
		Navnet VX2 1724, 1734 & 1824	SD-card	MAX
		GP1670F & 1870F	SD-card	4D MAX+
Humminbird		ION10/12	SD-card	4D MAX+
		ONIX 8/10	SD-card	4D MAX+
Raymarine		aSeries, cSeries, eSeries & gSeries (Lighthouse II, v13 Software)	Micro SD-Card	4D MAX+
		Dragonfly (all models)	Micro SD-Card	4D MAX
Si-Tex		EC5, 7 & 11	SD-Card	MAX
		Colormax	C-Card	MAX
		Navmate	C-Card	MAX
		Fishplot	C-Card	MAX
		Explorer	C-Card	MAX
		SNS700	SD-Card	MAX
		SNS1100	SD-Card	MAX
Standard Horizon		CP Series (all models)	C-Card	MAX
		CPN 700i	SD-Card	4D MAX+
		CPN 1010i	SD-Card	4D MAX+
NAVICO	Lowrance	ELITE Series (all models)	Micro SD-Card	MAX-N
		HDS GEN 1	Micro SD-Card	MAX-N
		HDS GEN 2 & GEN 2 TOUCH	Micro SD-Card	MAX-N+
		HDS GEN 3	Micro SD-Card	MAX-N+
	Simrad	NSS	Micro SD-Card	MAX-N
		NSS EVO 2	Micro SD-Card	MAX-N+
		NSO EVO 2	Micro SD-Card	MAX-N+
		NSE	Micro SD-Card	MAX-N
	B&G	ZEUS TOUCH	Micro SD-Card	MAX-N
		ZEUS ²	Micro SD-Card	MAX-N+

C-MAP COMPATIBLE PC NAVIGATION SOFTWARE

SOFTWARE MAKE	SOFTWARE MODEL	MEDIA TYPE	COMPATIBLE CHARTS
Rose Point	Coastal Explorer	Download	MAX
Expedition	Expedition MAX	DVD	MAX
	Expedition 4D	Download	4D
MaxSea	TZ Navigator	Download	MM3D
	TZ Explorer	Download	MM3D
Nobeltec	Odyssey, Trident, Catch and Sportfishing	Download	MM3D
P-SEA	Windplot	DVD	MAX