



## A-Frame Adjustable Trailer Jack

Patents Pending



### Read, Understand, Follow and Save These Instructions

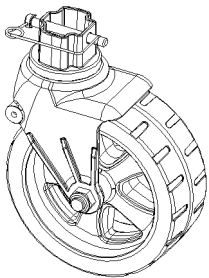
Read, understand and follow all of these instructions and warnings (Instructions) before installing and using this product. Install and use this product only as specified in these instructions. Improper installation or use of this product may result in property damage, serious injury, and/or death. Never allow installation or use of this product by anyone without providing them with these instructions. You must read, understand and follow all instructions and warnings for any product(s) to which this product is used in conjunction with or installed. Save these instructions with the product for use as a reference for any future installation and use of the product.

### **WARNING**

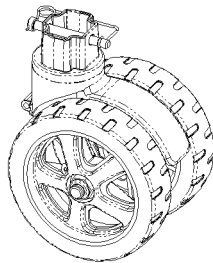
**Failure to follow all warnings and instructions may result in product failure, property damage, serious bodily injury, and/or death.**

- This product must be installed and used in strict accordance with these instructions. Purchaser/owner must not alter or modify the product.
- Operator and bystanders should never position any part of body under or on the path of any portion of this product or the load being supported, or moved.
- Fully retract jack before trailering.
- This product is not intended to be used as a transport device for the implement it is attached to. Minimize movement of implement while jack is under load.
- Do not allow children to play on or around this product or the load being supported, or moved.
- F2 A-frame trailer jacks must be used with a compatible Fulton F2 A-Frame Class 3 or Class 4 trailer coupler.
- Secure the load, vehicle and trailer from rolling (by blocking wheels) when operating jack or coupling trailer.
- Never exceed maximum rated capacity. Refer to stamped markings or decals on product to obtain rated capacity.
- These jacks are designed for vertical loading.
- Excessive side forces may cause jack failure and must be avoided.
- Before manually moving trailer, crank to lowest position.
- Do not cut, drill, weld or modify this jack in any manner not described in these instructions.
- All welding must be performed by an AWS certified welder.
- Always replace bent, broken, or worn parts before using this product.

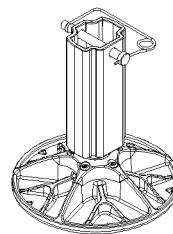
### Optional Parts



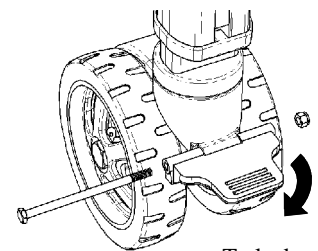
**Removable Wide Track Assembly**  
1600 lb capacity



**Removable Twin Track Assembly**  
1600 lb capacity



**Removable Round Articulating Foot Plate**  
2000 lb capacity



To lock

**Wheel Wedge**

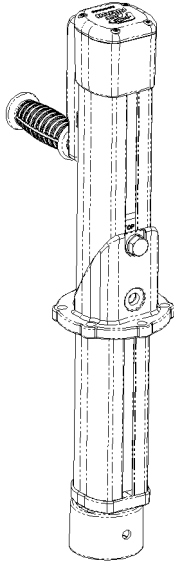
### Installation Instructions

**Warning: Failure to follow all warnings and instructions may result in product failure, property damage, serious bodily injury, and/or death.**

Before mounting the jack confirm that there will be no interference from the tow vehicle, tongue, ground, and any other mounted accessories while stationary or in motion. Before installing, check for interference in all positions including handle swing and swivel positions. Check for interference again after installation is complete.

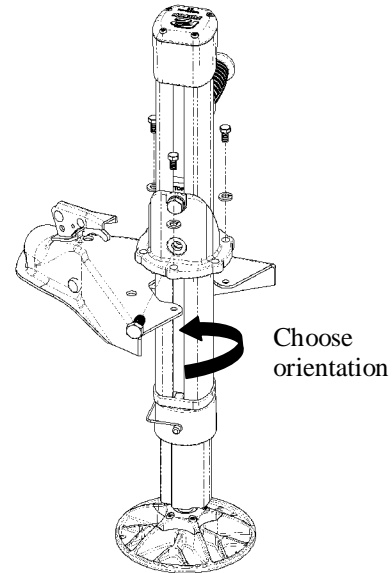
## Assembly

F2 A-frame trailer jacks **MUST BE** used with a compatible Fulton F2 A-frame Class 3 or Class 4 trailer coupler.



**F2 A-Frame Jack**  
**2000 lb. capacity**

Shown with optional  
footplate



Slide jack into coupler opening. Rotate jack to desired mounting position, choose from front, rear, driver or passenger. Align the three (3) mounting bracket holes with the holes in the coupler. Assembly using the provided 3/8" bolts with the 3/8" lock washers. Tighten bolts to 25-30 ft. lbs.

After the jack is secured to the coupler, install the 1/2" bolt into the bottom hole of the mounting bracket to secure the bracket to the jack. Tighten both 1/2" bolts to 50-70 ft.