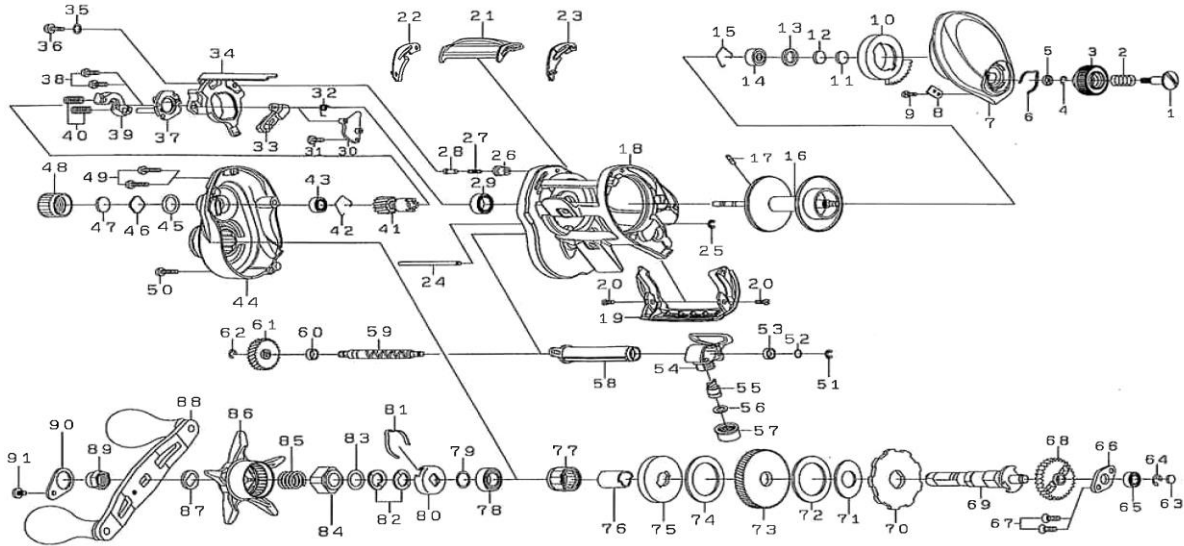




BAITCASTING REEL

COASTAL-TWS200HSL



| Key No. | Part No. | Part Name | Key No. | Part No. | Part Name |
|---------|----------|---------------------|---------|----------|--------------------------|
| 1 | H93-0401 | SET PLT SCREW | 47 | B17-5503 | CAP RUBBER WASHER |
| 2 | E16-7101 | SPRING (A) | 48 | J00-4701 | CAST CONTROL CAP |
| 3 | H93-0228 | BRAKE ADJ KNOB | 49 | G04-0814 | PLT SCREW |
| 4 | B33-9801 | BRAKE DIAL RETAINER | 50 | G04-0825 | PLT SCREW |
| 5 | F63-7701 | BRAKE DIAL WASHER | 51 | 320-5901 | RETAINER |
| 6 | H66-3401 | BRAKE CLICK SPRING | 52 | B41-1700 | WASHER |
| 7 | H94-4910 | R/S PLATE | 53 | G72-0001 | WORM SHAFT BEARING |
| 8 | H91-5501 | BRAKE DIAL RETAINER | 54 | J17-6601 | T-LEVEL WIND |
| 9 | G93-9301 | SCREW | 55 | 121-4212 | LINE GUIDE PAWL |
| 10 | H93-0501 | MAGNET HOLDER | 56 | 373-1300 | WASHER |
| 11 | 375-7400 | SPACER | 57 | F40-2801 | LINE GUIDE NUT |
| 12 | 375-7411 | SPACER (B) | 58 | H94-4601 | LEVEL WIND GUARD |
| 13 | G18-5101 | SPACER © | 59 | H91-1701 | WORM SHAFT |
| 14 | G51-1507 | BALL BEARING | 60 | G72-0001 | WORM SHAFT BEARING |
| 15 | F03-2201 | BEARING RETAINER | 61 | H91-0501 | WORM GEAR |
| 16-17 | J10-7203 | SPOOL ASSEMBLY | 62 | B33-9801 | RETAINER |
| 18 | H94-3916 | FRAME | 63 | G09-9800 | WASHER |
| 19 | H93-0002 | FRONT PLT | 64 | 320-8002 | RETAINER |
| 20 | H45-5402 | SCREW | 65 | G53-8007 | BALL BEARING (D) |
| 21 | H91-2401 | CLUTCH LEVER | 66 | H92-8901 | PLATE (B) |
| 22 | H91-5701 | CLUTCH LEVER PLT | 67 | E13-4509 | SCREW |
| 23 | H91-5601 | CLUTCH LEVER PLT | 68 | H91-2701 | DRIVE SHAFT GEAR |
| 24 | H91-2101 | STABILIZER BAR | 69 | H91-1602 | DRIVE SHAFT |
| 25 | H70-4101 | RETAINER | 70 | H92-9401 | A/R/ RATCHET |
| 26 | H91-0601 | COLLAR | 71 | H66-1101 | DRIVE SHAFT WASHER (A) |
| 27 | H92-8801 | SPRING (B) | 72 | H66-1001 | DRIVE SHAFT WASHER (B) |
| 28 | J05-5201 | PIN | 73 | J07-6602 | DRIVE GEAR |
| 29 | G43-1002 | BALL BEARING | 74 | H45-2601 | DRAG WASHER |
| 30 | H94-4301 | PLATE | 75 | H91-3201 | KEY WASHER |
| 31 | H29-4101 | SCREW | 76 | G54-5001 | GEAR SHAFT COLLAR |
| 32 | H47-3301 | CLUTCH CAM SPRING | 77 | G81-9801 | ROLLER CLUTCH |
| 33 | J22-1501 | CLUTCH TRIP LEVER | 78 | G43-1002 | BALL BEARING |
| 34 | H94-4001 | CLUTCH CAM PLT | 79 | B55-3801 | WASHER |
| 35 | H15-9201 | WASHER | 80 | F02-8203 | CLICK LEAF SPRING HOLDER |
| 36 | 352-2501 | SCREW | 81 | F03-2401 | CLICK LEAF SPRING |
| 37 | H65-9101 | CLUTCH CAM PLT | 82 | 150-8901 | SPRING WASHER |
| 38 | B03-2904 | SCREW | 83 | H92-9501 | WASHER (F) |
| 39 | H94-4401 | YOKE | 84 | H91-2002 | NUT |
| 40 | J05-5301 | YOKE SPRING | 85 | J01-1901 | SPRING © |
| 41 | J09-2101 | PINION GEAR | 86 | H91-1901 | STAR DRAG |
| 42 | H18-0501 | BEARING RETAINER | 87 | F57-6601 | HANDLE COLLAR |
| 43 | G43-1105 | BALL BEARING | 88 | J25-4001 | HANDLE ASSEMBLY |
| 44 | H94-3823 | L/S PLT | 89 | G79-3302 | HANDLE NUT |
| 45 | 171-5201 | O-RING | 90 | H83-4510 | HANDLE NUT PLT |
| 46 | B17-5406 | SPACER (F) | 91 | 353-8301 | HANDLE NUT PLT SCREW |