

Ezy-Glide Inc. *since 1981*

2019 PRODUCT CATALOG

RETAIL PRICING

Mechanical & Hydraulic Marine Steering Systems



HydraStik HS-2500



EZY STIK II
840



EZY STIK III
870

**EZY-GLIDE, INC. PRODUCTS
MEET OR EXCEED
NMMA/ABYC STANDARDS**



SideKick SK-2500

MEMBER OF
NMMATM
National Marine Manufacturers Association

MEMBER
ABYC[®]
Setting Standards for Safer Boating

HYDRAULIC STEERING

HydraStik[®] (HS-2500) • Sidekick[®] (SK-2500) • HydraGlide[®] (HG-2500)

MECHANICAL STEERING

Ezy-Stik II 840[®] Ezy-Stik III 870[®]



PRODUCT CATALOG

2019 RETAIL PRICING

Effective January 1, 2019

| | |
|--|-------------|
| Hydraulic Steering Systems | 3-4 |
| -HydraStik HS-2500 | |
| -SideKick SK-2500 | |
| -HydraGlide HG-2500 | |
| Hydraulic System Accessories | 5-6 |
| -Mounting Brackets | |
| -HydraGlide Hydraulic Fluid | |
| Mechanical Steering Systems | 7-8 |
| -Ezy-Stik II 840 | |
| -Ezy-Stik III 870 | |
| Replacement Cables & Parts for Ezy-Stik Systems | 8 |
| Ezy-Stik Accessories | 9-10 |
| -Ezy-Tab | |
| -Lever Latch | |
| -Engine Connection Kit | |
| -Rigger's Pal Mount Bracket | |
| -Adjustable Mount Bracket | |
| Ezy-Glide Warranty Policy | 11 |
| Quick Price List | 12 |

EZY-GLIDE HYDRAULIC SYSTEMS

Our Hydraulic Steering Systems are designed for up-front steering as the mechanical stick-steering systems with the *added advantage of fewer turns from lock-to-lock and no feedback*. These systems have a manufacturer's recommended maximum horsepower rating of **90 hp OB/110 Jet**. The **total turns from lock-to-lock is only 2.8** which requires the operator to turn a mere 1.35 turns to move the boat from center position to a complete right or a complete left turn. Hydraulic systems may be installed on either the port or starboard side of the boat or installed into a console mount. An installation instruction manual is included with each system.



HYDRA-STIK®
(MODEL HS-2500)



SIDE-KICK®
(MODEL SK-2500)



HYDRA-GLIDE®
(MODEL HG-2500)



FAST RESPONSE HYDRAULICS

at only 2.8 turns from lock to lock!

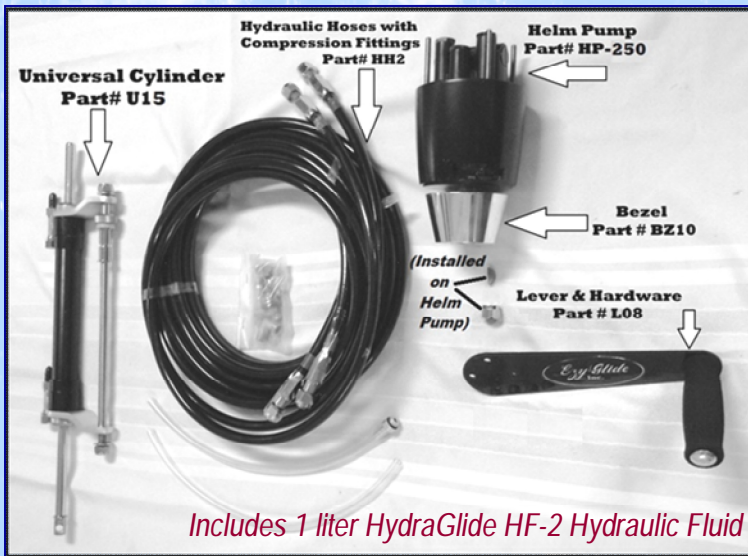
Compact design provides easy access to back of helm for installation and maintenance.

*Shown installed using the Ezy-Glide Hydra-Mount HYM-12.
Further information on page 5.*

PACKAGE DETAILS SHOWN ON THE NEXT PAGE

**EZY-GLIDE RECOMMENDS HYDRAGLIDE HYDRAULIC FLUID
IN THESE SYSTEMS FOR BEST RESULTS (SEE PAGE 5).**

| PART # | DESCRIPTION | |
|---------|--|--|
| HS-2500 | HYDRA-STIK COMPLETE HYDRAULIC STEERING SYSTEM | |
| SK-2500 | SIDE-KICK COMPLETE HYDRAULIC STEERING SYSTEM | |
| HG-2500 | HYDRA-GLIDE COMPLETE HYDRAULIC STEERING SYSTEM | |
| CY-U15 | UNIVERSAL CYLINDER FOR 2500 SERIES STEERING SYSTEMS | |
| HP-250 | HELM PUMP (2.8 TURNS) FOR 2500 HYDRAULIC STEERING SYSTEMS | |
| L-08 | REPLACEMENT LEVER & HARDWARE (FOR HYDRA-STIK SYSTEM ONLY) | |
| BZ-10 | REPLACEMENT BEZEL (FOR HYDRA-STIK SYSTEM ONLY) | |
| HG-SW | HYDRA-GLIDE STEERING WHEEL FOR EZY-GLIDE HYDRAULIC SYSTEMS | |
| SK-SW | SIDEKICK STEERING WHEEL FOR EZY-GLIDE HYDRAULIC SYSTEMS | |



THE HYDRASTIK HS-2500 SYSTEM:

- Hydraulic Helm Pump *HP-250*
- 20' Hydraulic Hose with Fittings (set of 2) *HO-2*
- Universal Hydraulic Cylinder *CY-U15*
- Installation Package (includes Woodruff Key and Shaft Nut) *IP-1*
- Bezel *BZ-10*
- HydraStik Lever *L-08*
- HydraGlide Hydraulic Fluid (1 liter) *HF-2*

RETAIL PRICE: \$1,260.00

All Hydraulic Systems rated for outboard engines UP TO 90hp/110 jet



THE SIDEKICK SK-2500

- Hydraulic Helm Pump *HP-250*
- 20' Hydraulic Hose with Fittings (set of 2) *HO-2*
- Universal Hydraulic Cylinder *CY-U15*
- Installation Package (includes Woodruff Key & Shaft Nut) *IP-1*
- SideKick Steering Wheel *SK-SW*
- HydraGlide Hydraulic Fluid (1 liter) *HF-2*

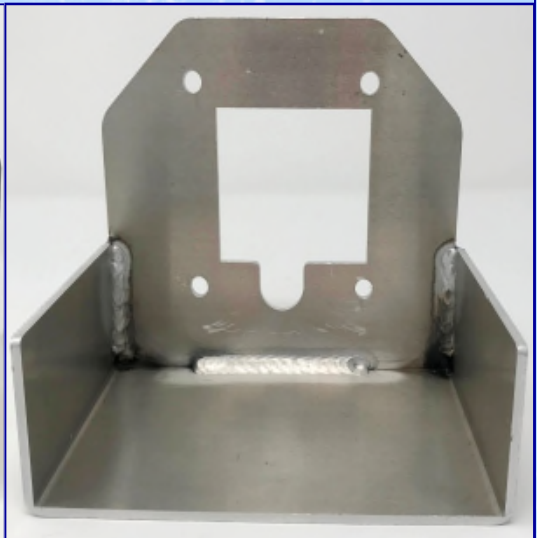
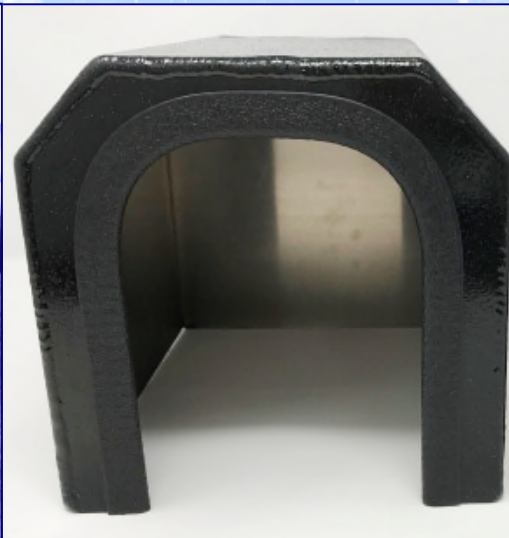
THE HYDRAGLIDE HG-2500

- **FAST RESPONSE CONSOLE! 2.7 turns**
- Hydraulic Helm Pump *HP-250*
- 20' Hydraulic Hose with Fittings (set of 2) *HO-2*
- Universal Hydraulic Cylinder *CY-U15*
- Installation Package (includes Woodruff Key & Shaft Nut) *IP-1*
- HydraGlide Steering Wheel *HG-SW*
- HydraGlide Hydraulic Fluid (1 liter) *HF-2*

EZY-GLIDE HYDRAULICS ACCESSORIES



**Installed View
(Wheel Not Included)**



EZY-MOUNT ALUMINUM MOUNT PAD (Part # EZM-14)

Designed to mount the helm of Ezy-Glide Hydraulic systems. Mount Pad Cover is approximately 6.5" high, 8.25" deep, and 6.25" wide. Internal helm pump mount is approximately 5.5" high, 6" wide, 3.75" from front to center plate and 3" from back to center plate. Helm pump opening is approximately 4".

RETAIL PRICE: \$138.00



**YOUR
CHOICE OF
COLOR**

See
installation
photos of
this item on
page 3.

HYDRA-MOUNT FIBERGLASS MOUNT PAD (Part # HYM-12)

Designed for mounting the helm of Ezy-Glide Hydraulics systems. This mount pad can be ordered in a variety of basic colors. Allow up to 6 weeks for this custom-made product.

HYDRAGLIDE HYDRAULIC FLUID 1 liter Hydraulic Fluid (Part # HF2)

We recommend Hydra-Glide™ Hydraulic Steering Fluid for use in your Ezy-Glide Hydraulic Marine Steering Systems. Hydra-Glide™ Hydraulic Steering Fluid by Ezy-Glide is a high quality, low viscosity, anti-wear hydraulic oil specially developed for use in industrial and mobile equipment. It has a very high viscosity index and a low pour point. Hydra-Glide™ Hydraulic Steering Fluid may be used in hydraulic systems where the equipment manufacturer specifies a MIL-H 5606 type fluid. It is not recommended for aircraft use.



**CASE QUANTITIES AND DISCOUNTS AVAILABLE FOR
HYDRAGLIDE HYDRAULIC FLUID.
CONTACT US FOR MORE INFORMATION.**

EZY-GLIDE MECHANICAL STEERING SYSTEMS



EZY-STIK® II
MODEL 840

EZY-STIK® II MODEL 840

The Classic Ezy-Stik Steering System! Ezy-Stik II Model 840 is the standard for convenience. The slower ratio of the Ezy-Stik II provides the added mechanical advantage needed for higher horsepower as well as 4-stroke engines. The 840 has a manufacturer's maximum horsepower rating of 70hp/90hp Jet.

SPECIFICATIONS:

*TOTAL LEVER MOVEMENT: 58 INCHES/206 DEGREES
STEERING RATIO: 6.4/1 HOUSING DIMENSIONS: APPROX. 6" X 6"
LEVER LENGTH: 16"
(20" LEVER OPTION ALSO AVAILABLE AT ADDITIONAL COST)*

EZY-STIK® III MODEL 870

The Ezy-Stik III Model 870 has a quicker turning ratio which provides faster response and a shorter travel distance from lock to lock. *Due to the fact that 4-stroke engines transfer more negative torque feedback to the operator, if the engine is a 4-stroke over 40hp, the Ezy-Stik II Model 840 should be considered over the Model 870.* The 870 has a horsepower rating of 70hp/90hp Jet.

SPECIFICATIONS:

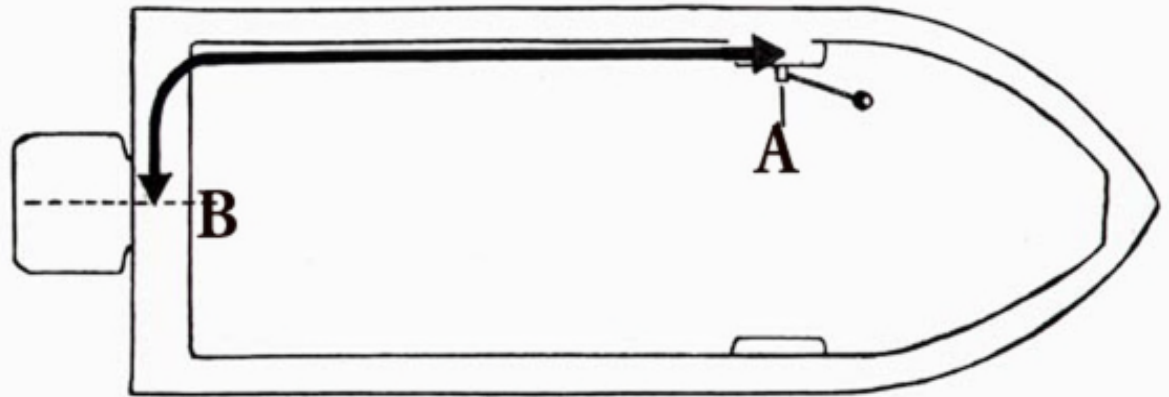
*TOTAL LEVER MOVEMENT: 44.8 INCHES/ 161 DEGREES
STEERING RATIO: 5.0/1 HOUSING DIMENSIONS: APPROX. 7 ½" X 7 ½"
LEVER LENGTH: 16" (20" LEVER OPTION ALSO AVAILABLE AT ADDITIONAL COST)*



EZY-STIK® III
MODEL 870

EZY-GLIDE MECHANICAL STEERING SYSTEM CABLE LENGTHS

How to measure for the correct cable length:



Measure from point A to point B + 8" = Cable length .

We can manufacture ANY LENGTH CABLE needed in 1/2 foot increments.

All systems and cables are the same price up to 15'.



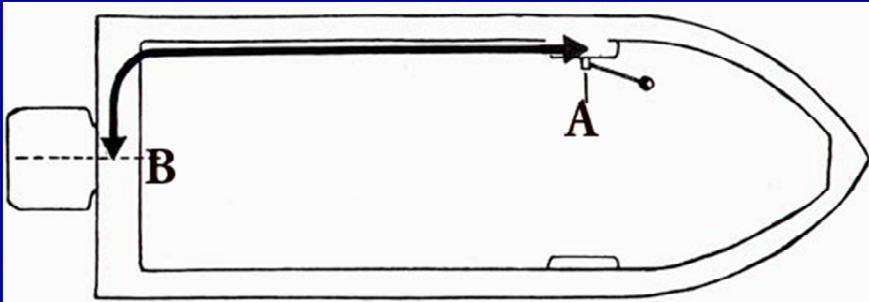
PHOTO COURTESY OF XTREME INDUSTRIES

STANDARD CABLE LENGTHS

PART #: USE SYSTEM # (840 OR 870) PLUS THE 4-DIGIT CABLE LENGTH (12' = 1200)

| | | | |
|----------|--------------------------------|----------|---------------------------------|
| 840-1000 | EZY-STIK® II 10' CABLE SYSTEM | 870-1000 | EZY-STIK® III 10' CABLE SYSTEM |
| 840-1100 | EZY-STIK® II 11' CABLE SYSTEM | 870-1100 | EZY-STIK® III 11' CABLE SYSTEM |
| 840-1200 | EZY-STIK® II 12' CABLE SYSTEM | 870-1200 | EZY-STIK® III 12' CABLE SYSTEM |
| 840-1250 | EZY-STIK® II 12½' CABLE SYSTEM | 870-1250 | EZY-STIK® III 12½' CABLE SYSTEM |
| 840-1300 | EZY-STIK® II 13' CABLE SYSTEM | 870-1300 | EZY-STIK® III 13' CABLE SYSTEM |
| 840-1350 | EZY-STIK® II 13½' CABLE SYSTEM | 870-1350 | EZY-STIK® III 13½' CABLE SYSTEM |
| 840-1400 | EZY-STIK® II 14' CABLE SYSTEM | 870-1400 | EZY-STIK® III 14' CABLE SYSTEM |
| 840-1500 | EZY-STIK® II 15' CABLE SYSTEM | 870-1500 | EZY-STIK® III 15' CABLE SYSTEM |

REPLACEMENT CABLES FOR EZY-STIK MECHANICAL STEERING SYSTEMS



Measure from point
A to point B + 8" = Cable length .

CONTACT US DIRECTLY FOR SPECIAL LENGTHS
AND WE WILL BE HAPPY TO ASSIST YOU!

HOW TO MEASURE

SYSTEM OR REPLACEMENT CABLE LENGTH

Measure from the center of the helm position to the center of the engine and add 8" to this measurement. Round up your cable length measurement to the nearest 1/2 ft length (i.e. a 12'2" measurement would order a 12 1/2' cable).

STANDARD REPLACEMENT CABLE LENGTHS

FOR CABLES OVER 15' ADD \$3.00 ADDITIONAL PER FOOT

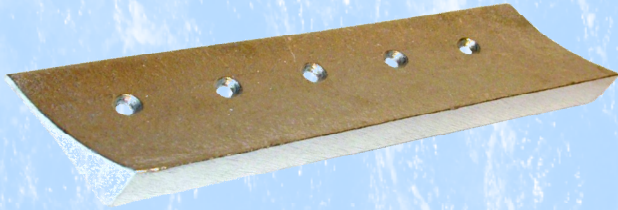
| | | | | |
|---------|---------------------------|---|---------|---------------------------|
| RC-0600 | 6' REPLACEMENT CABLE | WE CAN MANUFACTURE ANY LENGTH CABLE NEEDED IN 1/2 FOOT INCREMENTS. | RC-1150 | 11 1/2' REPLACEMENT CABLE |
| RC-0700 | 7' REPLACEMENT CABLE | | RC-1200 | 12' REPLACEMENT CABLE |
| RC-0800 | 8' REPLACEMENT CABLE | | RC-1250 | 12 1/2' REPLACEMENT CABLE |
| RC-0900 | 9' REPLACEMENT CABLE | | RC-1300 | 13' REPLACEMENT CABLE |
| RC-1000 | 10' REPLACEMENT CABLE | | RC-1350 | 13 1/2' REPLACEMENT CABLE |
| RC-1050 | 10 1/2' REPLACEMENT CABLE | | RC-1400 | 14' REPLACEMENT CABLE |
| RC-1100 | 11' REPLACEMENT CABLE | | RC-1500 | 15' REPLACEMENT CABLE |

REPLACEMENT ITEMS FOR EZY-STIK MECHANICAL STEERING SYSTEMS

| PART # | DESCRIPTION |
|---------|---|
| H-260 | LEVER (1/2" x 16") LEVER, KNOB & NUT |
| H-260-L | 20" LEVER (1/2" x 20") LEVER, KNOB & NUT |
| K-060 | BLACK KNOB FOR 1/2" HANDLE |
| DC-212 | DRESS COVER FOR ALL EZY-STIK® SYSTEMS |
| HP-900 | MOUNTING HARDWARE PACK |
| HP-2000 | LEVER AND HARDWARE PACK FOR EZY-STIK® II 840 SYSTEM |
| HP-3000 | LEVER AND HARDWARE PACK FOR EZY-STIK® III 870 SYSTEM |
| HO-840 | REPLACEMENT HOUSING FOR HELM OF EZY-STIK® II 830/840 SYSTEM (BLACK BOX ONLY. NO INSIDE PARTS.) |
| HO-870 | REPLACEMENT HOUSING FOR HELM OF EZY-STIK® III 870 SYSTEM (BLACK BOX ONLY. NO INSIDE PARTS.) |

EZY-STIK MECHANICAL STEERING SYSTEM ACCESSORIES

EZY-TAB (PART NO. EZY-TAB)



The Ezy-Tab is designed to counter the torque pressure on the wheel and will reduce or even eliminate steering torque. It mounts on the skeg of the motor below the prop on the gearcase. Easy to Install. Made of cast aluminum with stainless screws.

LEVER LATCH

(PART NO. LL-17)

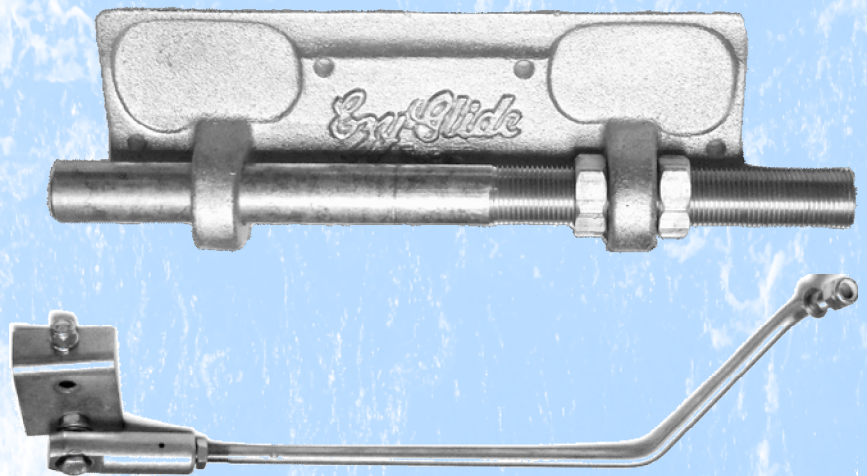
The Lever Latch has two functions. First, the latch can be flipped down over the lever of the Ezy-Stik lever as shown. This works well to hold the engine in straight ahead position. Second, this same position will allow trolling in a straight line.



ENGINE CONNECTION KIT

(PART NO. EG-LPK)

This kit is to supply through tube engine connection. These are primarily for engines that do not have the remote steering tube/tilt tube built onto the engine. This kit supplies the transom plate, threaded tube and link-arm connection to the engine. These kits are made only for cable entry from the port side of the tube.



TORQUE TAMER

(PART NO. TT-100)

The Torque Tamer is designed to assist the operator by reducing steering torque feedback, especially with 4-Stroke engines. The Torque Tamer is designed for Ezy-Glide Steering Systems only. This part will fit most Mercury and Yamaha engines. 5" long from base to bolt.



EZY-STIK MECHANICAL STEERING SYSTEM ACCESSORIES

EZY-SHOT LUBRICANT (PART No. EZ-SH)

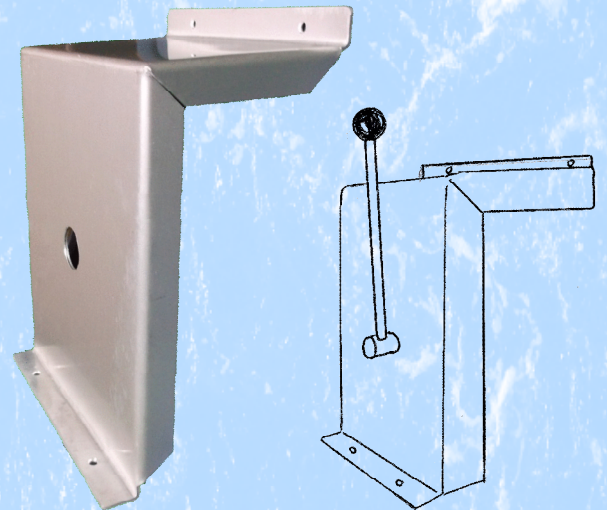
A brand-new product which has already produced great results for lubricating installed Ezy-Stik systems. This product is used to ease steering for the operator when steering has become stiff from problems other than defective steering. Comes with a drill template for the Ezy-Stik II 840 system to allow for drilling a small hole through the existing mount surface and housing to the inside of the helm. After drilling, insert syringe into hole of housing and apply 1 oz. into housing. Ezy-Shot Syringe holds 2 oz.—enough for 2 applications.



RIGGER'S PAL MOUNTING BRACKET (PART No. RP-12)

This aluminum mount pad is for port mount installation adjacent to the operator's seat. The Rigger's Pal Mount Pad with its compact and space-saving design is for mounting the helm of the stick steering system as shown.

DIMENSIONS: 12" HIGH, 6" DEEP, 10" WIDE



ADJUSTABLE MOUNTING BRACKET (PART No. AB-12)

Adjustable aluminum mount pad for installation adjacent to the operator's seat. The Adjustable Mount Bracket uses the same compact and space-saving design as the Rigger's Pal for mounting the helm of the stick steering system. Adjusts by 1" positions both in depth and height for greater flexibility of installation and boat design. 7 height positions and 5 depth positions.

DIMENSIONS: 10" WIDE ADJUSTS FROM 14" TO 18 $\frac{1}{4}$ " HIGH AND ADJUSTS FROM 8 $\frac{3}{4}$ " TO 11 $\frac{7}{8}$ " DEEP

