



# Aftermarket Catalog - 2017





ENGINEERED *Excellence*™  
An ISO 9001-2008 Registered Company



## Rugged • Reliable • Innovative

Faria Beede Instruments, Inc. has been manufacturing gauges and instruments in Uncasville, CT for more than 50 years. The company offers a full compliment of analog and digital engine monitoring and telematic solutions for a wide range of global marine, military, industrial and performance industries.

One of the few remaining vertically integrated U.S. manufacturers of SAE J1939 and NMEA 2000 instrumentation, Faria Beede provides some of the best turnaround times and responsive support in the industry. This is only possible by having total control of all aspects of design, engineering and manufacturing.

Whether your needs are for the simplest or the more advanced computerized engines, Faria Beede has the instrumentation solution that is right for you.



Instruments for  
**Automotive**  
**Commercial**  
**Industrial**  
**Marine**  
**Military**  
**Performance**  
**Recreational**



**Made in the USA**

## Featured



EntelNet Wi-Fi Module  
(page 3)



GPS Speedometer  
(page 4)



Boxed Sets  
(page 5-6)



Depth Sounders  
(page 7)

## Classic Styling



Chesapeake Black SS  
(page 9)



Chesapeake White SS  
(page 10)



Coral  
(page 11)



Dress White  
(page 12)



Essex Contour  
(page 12)



Euro  
(page 13)



Euro White  
(page 14)



Euro Beige SS  
(page 15)



Kronos  
(page 15)



Heavy Duty - Black  
(page 16)



Heavy Duty - Silver  
(page 16)



Platinum  
(page 17)



Professional Red  
(page 17)



Spun Silver  
(page 18)



Digital Black Fade  
(page 19)



GPS Antenna  
(page 20)

## Accessories

Transducers and Senders (page 20)  
Accessories (page 21)  
Specifications (page 22)



# EntelNet

## Wi-Fi Remote Engine Monitoring

### Engine Monitoring and Alert Communications System.

The EntelNet™ service is a multi part system which combines the information received from the engine ECU (via CAN Bus), Analog (resistance, voltage, etc.) or Serial data (RS-232 for NMEA 0183, typical for GPS) and an over the air communications system, like Wi-Fi, to provide remote control and monitoring of on-board systems.

When an engine is malfunctioning the ECU transmits the area of the malfunction as a fault code.

The fault code is often used to turn on a lamp or an alert indicator. The EntelNet™ system records these fault codes and can send the data, using your e-mail application to the technician giving them a heads up of possible problems or a means to diagnose the engine's health remotely.

#### NMEA2000 Wi-Fi module (WD100)

(Not currently available for sale outside of North America.)

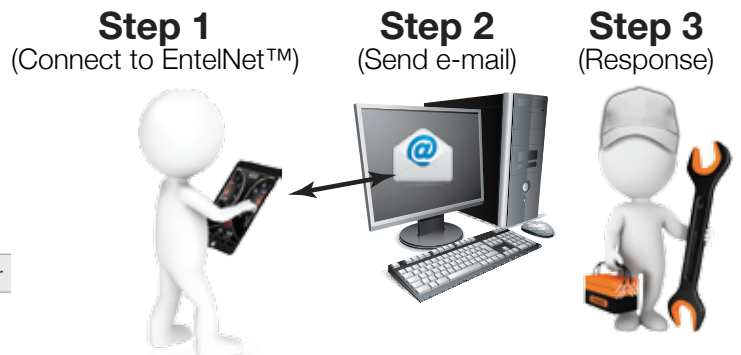
Catalog#    Factory #    Description

KTF068    KTF068    NMEA2000 EntelNet™ module with NMEA2000 connector



The data (GPS speed, Map position, Instrument data and CAN error codes) is displayed in an easy to read website and can be viewed by an internet capable Android® device i.e. Smart Phone, Tablet. (iOS version coming soon.)

The engine information can then be sent to a repair facility, via e-mail, giving your repair technician a heads up that you're having problems.



Connected directly to the CAN Bus, Real-Time data is sent by the EntelNet™ wireless module (Wi-Fi™).

### Get the technicians involved.

- No additional costs
- Send the engine and other critical data anywhere in the world to be diagnosed\*\*
- Helps reduce warranty costs and can help lessen repair time

\* Built for an NMEA2000 engine

\*\* Requires an Android® device connected to the internet.

# GPS Speedometer

The GPS Speedometer is a drop-in replacement for your current speedometer.

The GPS **antenna is built-in** to the instruments and does not require an external antenna. **No additional hardware is required.**

The Faria Beede GPS Speedometer uses a highly accurate 48 channel GPS receiver. You can be sure that the GPS Speedometer is giving you the most accurate GPS information available on the market today.

Speed data is shown by an analog pointer. This pointer is driven by a digital stepper motor for increased accuracy and minimized pointer bounce.

## Features & Benefits

- Available in multiple speed ranges in MPH, KPH, and KNOTs
- Premium LED back-lit.
- Available with and without LCD displays showing Compass Rose heading and actual heading (COG)
- Fast satellite acquisition time (TTFF)  
1 second from Hot Start
- Speed accuracy of +/- 1 MPH
- Heading accuracy of +/- 1 degree
- Digital stepper motor driven pointers
- Perfect for slow moving vessels where pitot tubes just don't work
- Ideal replacement for speed sensing devices (pitot tube and paddle wheel) that can fail over time

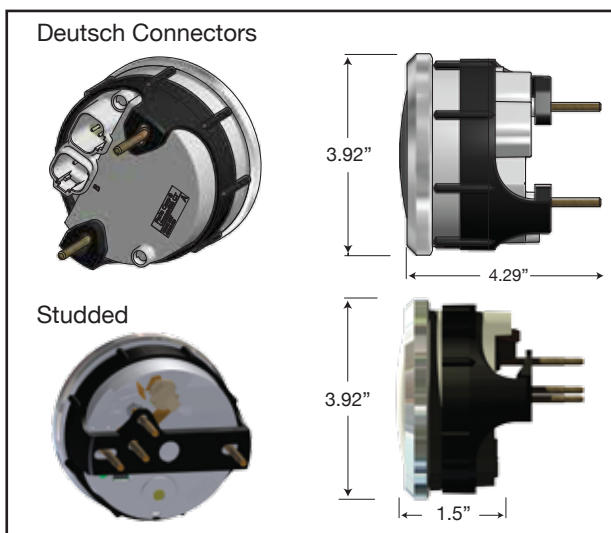
## GPS Speedometers

| Catalog# | Factory # | Style          | Range   | Display | Case    |
|----------|-----------|----------------|---------|---------|---------|
| 33710    | SGP012    | Ches. Black SS | 80 MPH  | LCD     |         |
| 33726    | SGP004    | Ches. Black SS | 60 MPH  | LCD     |         |
| 33749    | SGP114    | Ches. Black SS | 60 MPH  |         | Studded |
| 33728    | SGP006    | Ches. Black SS | 50 KNOT | LCD     |         |
| 33829    | SGP010    | Ches. White SS | 80 MPH  | LCD     |         |
| 33826    | SGP003    | Ches. White SS | 60 MPH  | LCD     |         |
| 33839    | SGP113    | Ches. White SS | 60 MPH  |         | Studded |
| 33827    | SGP005    | Ches. White SS | 50 KNOT | LCD     |         |
| 33147    | SGP111    | Dress White    | 60 MPH  |         | Studded |
| 32816    | SGP110    | Euro Black     | 60 MPH  |         | Studded |



**Antenna built in.**  
No additional parts needed.

## Enclosures



### Deutsch connectorized harness

This premium style Speedometer is designed with the very latest technology. It is intended to fit directly into today's dash harnesses with easy Plug and Play connectors. Premium LED lighting and an optional diffused LCD display.

### Studded harness

The studded Speedometer offers an easy way to add GPS technologies to your dash. Designed to fit into existing dash harnesses all ready installed. The Studded Speedometer connects directly to the battery and ground without the addition of a costly connector. Edge lit dials are easy to read in foul weather. Available in the more popular Faria Beede Classic styles.



Packaged and ready for the display counter. These Boxed Sets offer a complete set of gauges ready to install.

Available in Chesapeake White Stainless Steel, Chesapeake Black Stainless Steel, Essex Contour, Euro, Euro White, Dress White and Kronos styles.

**The Boxed Sets offer a complete set of digital gauges ready to install.**



The **Outboard Set** comes complete with Speedometer and Pitot, Tachometer, Fuel gauge and Voltmeter.



The **Inboard Set** comes with Speedometer and Pitot, Tachometer, Fuel gauge, Voltmeter, Water Temp gauge and Oil Pressure gauge.

## Standard Boxed Sets



| Style               | Factory | Description  |         |
|---------------------|---------|--------------|---------|
| Euro                | KT9799  | Inboard Set  | 6 gauge |
| Euro                | KT9796  | Outboard Set | 4 gauge |
| Euro White          | KT9798  | Inboard Set  | 6 gauge |
| Euro White          | KT9795  | Outboard Set | 4 gauge |
| Dress White         | KT9797  | Inboard Set  | 6 gauge |
| Dress White         | KT9794  | Outboard Set | 4 gauge |
| Chesapeake SS White | KTF001  | Inboard Set  | 6 gauge |
| Chesapeake SS White | KTF002  | Outboard Set | 4 gauge |
| Chesapeake SS Black | KTF003  | Inboard Set  | 6 gauge |
| Chesapeake SS Black | KTF004  | Outboard Set | 4 gauge |
| Kronos              | KTF024  | Inboard Set  | 6 gauge |
| Spun Silver         | KTF0184 | Inboard Set  | 6 gauge |
| Spun Silver         | KTF0182 | Outboard Set | 4 gauge |
| Platinum            | KTF0183 | Outboard Set | 4 gauge |

## Boxed Sets with GPS Speedometers

|                     |        |              |         |
|---------------------|--------|--------------|---------|
| Essex Contour       | KTF056 | Outboard Set | 4 gauge |
| Chesapeake Black SS | KTF064 | Inboard Set  | 6 gauge |
| Chesapeake Black SS | KTF062 | Outboard Set | 4 gauge |
| Chesapeake White SS | KTF063 | Inboard Set  | 6 gauge |
| Chesapeake White SS | KTF061 | Outboard Set | 4 gauge |

**An easy plug and play instrument replacement for**



### NMEA 2000 Digital Kit

#### KTF034 - Base Set

MG3000 - Tachometer (7000 RPM)  
MG1000 - Speedometer (60 MPH)

#### KTF032 - 4 O/B Set

MG3000 - Tachometer (7000 RPM)  
MG1000 - Speedometer (60 MPH)  
Trim gauge  
Water Pressure gauge (0-60 PSI)

### SmartCraft Digital Kit

#### KTF042 - Base Set

MG3000 - Tachometer (7000 RPM)  
MG1000 - Speedometer (60 MPH)

#### KTF043 - 4 O/B Set

MG3000 - Tachometer (7000 RPM)  
MG1000 - Speedometer (60 MPH)  
Trim gauge  
Water Pressure gauge (0-60 PSI)

### Yamaha Digital Kit

#### KTF059 - Base Set

MG3000 - Tachometer (7000 RPM)  
MG1000 - Speedometer (60 MPH)

#### KTF060 - 4 O/B Set

MG3000 - Tachometer (7000 RPM)  
MG1000 - Speedometer (60 MPH)  
Trim gauge  
Water Pressure gauge (0-60 PSI)



## Digital Instruments



Communicates directly with the



**YAMAHA**

**SAE J1939**

engine ECUs providing an important link between the operator and the engine.

A great value for those boat owners looking to upgrade the instruments on their boat with American Made, OEM drop-in replacements.

### Basic Set - KFT032 (NMEA 2000) / KTF042 (SmartCraft) / KTF059 (Yamaha)



#### MG3000 7000 RPM Tachometer - 4-inch (3.375" dia. hole)

The MG3000 Tachometer features large lighted buttons with tactile feedback, LED back lighted dial, fog-resistant polycarbonate lens and plug and play connectorized cases. The daylight readable LCD is visible even in direct sunlight. A user-friendly, intuitive design makes navigating the menu interface easy to use. Customize the MG3000 with user definable screens and alarms.

The MG3000 Tachometer connects to the CAN bus and communicates directly with the engine ECU. Engine data, fault codes and alarms are displayed on the Tachometer's LCD display\*.

The MG3000 Tachometer is so much more than just a digital repeater. There are 3 analog inputs which can be used for Air Temperature, Trim, Fuel Level and Water Pressure and a NMEA 0183 input for a GPS antenna for Lat/Long, Heading, COG and clock.

#### MG1000 60 MPH Speedometer - 4-inch (3.375" dia. hole)

The MG1000 Speedometer connects directly to the MG3000 Tachometer. Like the Tachometer, the Speedometer has the look and function of an analog gauge, but the pointer is driven with a digital stepper motor for increased accuracy. Speed data can be displayed from the CAN bus, GPS antenna or connected paddle wheel.

\*Note: Some proprietary engine manufacturer alarms may not display or may be displayed incorrectly.

### 4 Gauge Box Set - KFT034 (NMEA 2000) / KTF043 (SmartCraft) / KTF060 (Yamaha)



#### MG3000 7000 RPM Tachometer - 4-inch (3.375" dia. hole)

#### MG1000 60 MPH Speedometer - 4-inch (3.375" dia. hole)

#### Digital Trim and Water Pressure gauges 2-inch (2.0625" dia. hole)

The discrete Digital Trim and Water Pressure gauges connect directly to the MG3000 Tachometer. Digital signals are processed by the engine and sent through the Tachometer providing an easy to use display of the information. The stepper motor driven pointer provides accurate feedback of Trim and Water Pressure reported by the engine ECU.

### Harnesses Available -

- KTF033 - Suzuki - Engine to Backbone Harness
- KTF035 - Honda Marine - Engine to Backbone Harness
- KTF036 - Yamaha - Engine to Backbone Harness
- KTF044 - Mini SmartCraft Backbone Harness
- KTF138 - Mini NMEA 2000 Backbone Harness
- KTF069 - Discrete instrument connector Harness



# Depth Sounders



## Depth Sounders

| Factory # | Style            | Transom | In-Hull | Thru-Hull |
|-----------|------------------|---------|---------|-----------|
| DS0101    | Euro Black       | 12850   | 12851   | 12894     |
| DS0100    | Euro White       | 12950   | 12951   | 12994     |
| DS0103    | Euro Beige SS    |         | 15151   |           |
| DS0112    | Coral            | 13050   | 13051   |           |
| DS0114    | Dress White      | 13150   | 13151   | 13194     |
| DS0110    | Ches. SS White   | 13850   | 13851   | 13894     |
| DS0111    | Ches. SS Black   | 13750   | 13751   | 13795     |
| DS0101    | Professional Red | 12850   | 12851   | 12894     |
| DS0131    | Kronos           | 19150   | 19151   |           |
| DS0104    | Spun Silver      | 36150   | 36151   |           |

## Dual Temperature Depth Sounders

| Factory # | Style          | Transom | Thru-Hull |
|-----------|----------------|---------|-----------|
| DS1009    | Dress White    | 13154   |           |
| DS1004    | Ches. SS White | 13852   | 13896     |
| DS1002    | Ches. SS Black | 13752   | 13797     |

## Features & Benefits

- Depth range: 1- 61 meters (3 -199 feet)
- Deep and Shallow water alarms
- Programmable keel off-set
- Automatic gain control
- Back lighting for maximum night vision;
- Metric or US standard units
- Easy to install!

Dual Temperature Depth Sounder can display outside air temperatures, baitwell or external water temperatures from 0°C to 100°C (32°F to 200 °F).

## Accuracy at High Speeds

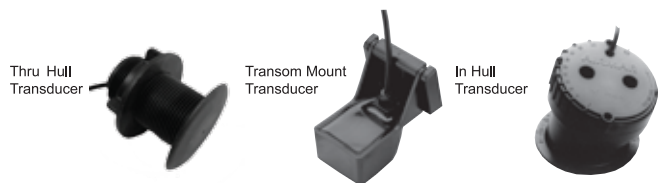
Our Engineers have incorporated the latest microprocessor technology and proprietary software designed to take advantage of today's high performance transducers. As a result this depth sounder outperforms all others on the market in its high speed capabilities and accuracy when faced with various bottom conditions.

The Depth Sounders from Faria offer a 3-199 foot (1-61 meters) depth capability, with an automatic gain control, backlighting for maximum night vision, keel offset, and deep and shallow water alarms.

Depth can be read in meters, and feet. With its oversized back-lit display depth can be easily read in any condition. Audible and Visual alarms let the boater know when a shallow or deep water condition exist. A programmable keel offset lets you adjust the offset from the keel at the display.

## Transducers

The Depth Sounder is available with either a Transom, In-Hull or a Thru Hull mounted transducer.

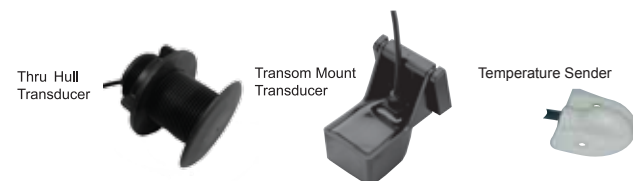


## Dual Temperature Depth Sounder

The dual display of the Dual Temperature Depth Sounder can also show temperature of the water, baitwell or the ambient air temperature all from one 2" gauge.

## Senders and Transducers

The Dual Temperature Depth Sounder comes with a Transom mounted transducer and temperature sender.



**Harnesses and connectors included.**

**Fits a standard 2 1/16" (53 mm) gauge mounting hole.**



Dashboards are getting more and more crowded as today's technology explodes on to our boats. Often there are so many beeps and buzzes it's hard to see just what's happening. Of course, you can fill up your dash with lots of little two inch discrete gauges but that too is often just as confusing. That's why Faria Beede developed our multi-function gauge.

We've combined the most useful discrete gauges into a single instrument and then styled them to match many of our standard styles.

Let us be your solution for dash overload.

## Multifunction Indicators

| Catalog# | Factory # | Size | Style          | Description   |
|----------|-----------|------|----------------|---|
| 33751    | GF0007    | 4    | Ches. Black SS | Multifunction [Fuel, Oil PSI, Water Temp., Voltmeter] |
| 33851    | GF0008    | 4    | Ches. White SS | Multifunction [Fuel, Oil PSI, Water Temp., Voltmeter] |
| 33151    | GF0003    | 4    | Dress White    | Multifunction [Fuel, Oil PSI, Water Temp., Voltmeter] |
| 32851    | GF0001    | 4    | Euro Black     | Multifunction [Fuel, Oil PSI, Water Temp., Voltmeter] |
| 32951    | GF0002    | 4    | Euro White     | Multifunction [Fuel, Oil PSI, Water Temp., Voltmeter] |

## 5-inch Instruments

| Factory # | Size | Style          | Description   |
|-----------|------|----------------|---|
| TCH223    | 5    | Euro SS        | Tachometer (6000 RPM) (Gas)                                 |
| TD9156    | 5    | Euro SS        | Tachometer with Hourmeter (4000 RPM) (Diesel) (Mag Pick-Up) |
| SE9367    | 5    | Euro SS        | Speedometer (65 MPH) (Pitot)                                |
| TC9381    | 5    | Ches. White SS | Tachometer (6000 RPM) (Gas)                                 |
| TC9369    | 5    | Ches. White SS | Tachometer with Hourmeter (4000 RPM) (Diesel) (Mag Pick-Up) |
| SE9504    | 5    | Ches. White SS | Speedometer (65 MPH) (Pitot)                                |
| TCH225    | 5    | Ches. Black SS | Tachometer (6000 RPM) (Gas)                                 |
| TD9210    | 5    | Ches. Black SS | Tachometer with Hourmeter (4000 RPM) (Diesel) (Mag Pick-Up) |

## Heavy Duty Instruments



Heavy Duty instruments are performance proven under the most demanding conditions. Major manufacturers worldwide install Faria Beede instruments as original equipment.

You can rely on our American made products for quality, durability and easy installation.

- Stainless steel bezels
- Anti-scratch glass lens
- Precision molded plastic cases for corrosion resistance and longevity
- Adaptable to 24 VDC systems (with optional resistor card)
- 12 volt DC negative ground
- Durable, rugged construction



Made in the USA



## Chesapeake Black Stainless Steel

Perimeter-lighted black dial with stylish blue and white graphics, polished stainless steel bezel, contoured white pointer, and domed glass lens.

| Catalog | Factory | Size | Description  |
|---------|---------|------|--|
| KTF003  | KTF003  |      | <b>Boxed Set-</b> Inboard (Speedo (60 MPH) (Mech)   Tach (6000 RPM)   Fuel Level   Voltmeter (10-16 VDC)   Water Temp (100-250 F)   Oil PSI (80 PSI) |
| KTF064  | KTF064  |      | <b>Boxed Set-</b> Inboard (Speedo (60 MPH) (GPS)   Tach (6000 RPM)   Fuel Level   Voltmeter (10-16 VDC)   Water Temp (100-250 F)   Oil PSI (80 PSI)  |
| KTF004  | KTF004  |      | <b>Boxed Set-</b> Outboard (Speedo (60 MPH) (Mech)   Tach (7000 RPM)   Fuel Level   Voltmeter (10-16 VDC)  |
| KTF062  | KTF062  |      | <b>Boxed Set-</b> Outboard (Speedo (60 MPH)(GPS)   Tach (7000 RPM)   Fuel Level   Voltmeter (10-16 VDC)  |

### Depth Sounders

|       |        |   |   |
|-------|--------|---|---|
| 13752 | DS1002 | 2 | Depth Sounder with Air and Water Temperature  |
| 13797 | DS1002 | 2 | Depth Sounder with Air and Water Temperature (Thru-Hull Transducer) (Requires 1 5/8" hole in vessel.) |
| 13750 | DS0111 | 2 | Depth Sounder (Transom Mounted Transducer)  |
| 13751 | DS0111 | 2 | Depth Sounder (In-Hull Mounted Transducer)  |
| 13795 | DS0111 | 2 | Depth Sounder (Thru-Hull Transducer) (Requires 1 5/8" hole in vessel.)                                |

### Tachometers

|       |        |   |   |
|-------|--------|---|---|
| 33710 | TC9785 | 4 | Tachometer (6000 RPM) (Gas) (Inboard & I/O)                           |
| 33718 | TC9035 | 4 | Tachometer (7000 RPM) (All outboard)                                  |
| 33742 | TD9127 | 4 | Tachometer (4000 RPM) (Diesel) (Mechanical takeoff & var ratio alt)   |
| 33719 | TD9732 | 4 | Tachometer (4000 RPM) (Diesel) (Mag Pick-Up)                          |
| 33732 | TC9127 | 4 | Tachometer with Hourmeter (6000 RPM) (Gas) (Inboard)                  |
| 33740 | TCH009 | 4 | Tachometer with Hourmeter (7000 RPM) (Gas) (Outboard)                 |
| 33750 | TC9884 | 4 | Tachometer (7000 RPM) with SystemCheck Indicator (Gas) (I/E Outboard) |

### GPS Speedometers

|       |        |   |                                      |
|-------|--------|---|--------------------------------------|
| 33730 | SGP012 | 4 | Speedometer (80 MPH) (GPS) (LCD)     |
| 33726 | SGP004 | 4 | Speedometer (60 MPH) (GPS) (LCD)     |
| 33749 | SGP114 | 4 | Speedometer (60 MPH) (GPS) (Studded) |
| 33728 | SGP006 | 4 | Speedometer (50 KNOTS) (GPS) (LCD)   |

### Speedometers

|       |        |   |                                    |
|-------|--------|---|------------------------------------|
| 33704 | SE9509 | 4 | Speedometer (60 MPH) (Mechanical)  |
| 33705 | SE9512 | 4 | Speedometer (80 MPH) (Mechanical)  |
| 33722 | SE9736 | 4 | Speedometer (50 Knot) (Mechanical) |

### Multi-Function Instruments

|       |        |   |  |
|-------|--------|---|--|
| 33701 | SY9625 | 4 | Synchronizer (Dual Engine)   |
| 33751 | GF0007 | 4 | Multifunction [Fuel Level   Oil PSI (80 PSI)   Water Temp (100-250 F)   Voltmeter (10-16 VDC)] |

### Indicators

|       |        |   |  |       |        |   |   |
|-------|--------|---|--|-------|--------|---|---|
| 13701 | GP9368 | 2 | Fuel Level Gauge (E-1/2-F)                         | 13707 | GP9402 | 2 | Trim Gauge (Mercury/Mariner/Mercruiser/Volvo DP/ Yamaha-2001 and newer) |
| 13721 | GP9777 | 2 | Fuel Level Gauge (Metric)                          | 13709 | GP9414 | 2 | Trim Gauge (I/E/Suzuki Outboard)  |
| 13702 | GP9640 | 2 | Oil Pressure Gauge (80 PSI)                        | 13736 | AP9530 | 2 | Ammeter (60-0-60)   |
| 13728 | GP9779 | 2 | Oil Pressure Gauge (5 BAR) (Metric)                | 13726 | VP7910 | 2 | Battery Condition Indicator (12 VDC)                                    |
| 13729 | GP9788 | 2 | Oil Pressure Gauge (10 BAR) (Metric)               | 13791 | CL1027 | 2 | Clock (Quartz) (Analog)   |
| 13712 | OP1018 | 2 | Water Pressure Gauge Kit (30 PSI)                  | 13713 | MH0055 | 2 | Hourmeter (10,000 hrs) (12-32 VDC)                                      |
| 13706 | GP9449 | 2 | Cylinder Head Temperature (60 - 220 F) with sender | 13715 | MH0239 | 2 | Hourmeter [Digital] (12-32 volts)                                       |
| 13704 | GP9142 | 2 | Water Temperature Gauge (100-250 F)                | 13725 | GP7377 | 2 | Rudder Angle Indicator  |
| 13732 | GP9174 | 2 | Water Temperature Gauge (40-120 C) (Metric)        | 13705 | VP9154 | 2 | Voltmeter (10-16 VDC)   |





# Chesapeake White Stainless Steel

Perimeter-lighted white dial with stylish blue and black graphics, polished stainless steel bezel, contoured black pointer, and domed glass lens.



| Catalog                    | Factory | Size | Description   |       |        |   |   |
|----------------------------|---------|------|---|-------|--------|---|---|
| KTF001                     | KTF001  |      | <b>Boxed Set</b> - Inboard (Speedo (60 MPH) (Mech)   Tach (6000 RPM)   Fuel Level   Voltmeter (10-16 VDC)   Water Temp (100-250 F)   Oil PSI (80 PSI) |       |        |   |   |
| KTF063                     | KTF063  |      | <b>Boxed Set</b> - Inboard (Speedo (60 MPH) (GPS)   Tach (6000 RPM)   Fuel Level   Voltmeter (10-16 VDC)   Water Temp (100-250 F)   Oil PSI (80 PSI)  |       |        |   |   |
| KTF002                     | KTF002  |      | <b>Boxed Set</b> - Outboard (Speedo (60 MPH) (Mech)   Tach (7000 RPM)   Fuel Level   Voltmeter (10-16 VDC)  |       |        |   |   |
| KTF061                     | KTF061  |      | <b>Boxed Set</b> - Outboard (Speedo (60 MPH) (GPS)   Tach (7000 RPM)   Fuel Level   Voltmeter (10-16 VDC)   |       |        |   |   |
| Depth Sounders             |         |      |   |       |        |   |   |
| 13852                      | DS1004  | 2    | Depth Sounder with Air and Water Temperature  |       |        |   |   |
| 13896                      | DS1004  | 2    | Depth Sounder with Air and Water Temperature (Thru-Hull Transducer) (Requires 1 5/8" hole in vessel.)   |       |        |   |   |
| 13850                      | DS0110  | 2    | Depth Sounder (Transom Mounted Transducer)  |       |        |   |   |
| 13851                      | DS0110  | 2    | Depth Sounder (In-Hull Mounted Transducer)  |       |        |   |   |
| 13894                      | DS0110  | 2    | Depth Sounder (Thru-Hull Transducer) (Requires 1 5/8" hole in vessel.)  |       |        |   |   |
| Tachometers                |         |      |   |       |        |   |   |
| 33807                      | TC9796  | 4    | Tachometer (6000 RPM) (Gas) (Inboard & I/O)   |       |        |   |   |
| 33817                      | TC9002  | 4    | Tachometer (7000 RPM) (All outboard)  |       |        |   |   |
| 33842                      | TD9128  | 4    | Tachometer (4000 RPM) (Diesel) (Mechanical takeoff & var ratio alt)   |       |        |   |   |
| 33818                      | TD9733  | 4    | Tachometer (4000 RPM) (Diesel) (Mag Pick-Up)  |       |        |   |   |
| 33832                      | TC9128  | 4    | Tachometer with Hourmeter (6000 RPM) (Gas) (Inboard)  |       |        |   |   |
| 33840                      | TCH008  | 4    | Tachometer with Hourmeter (7000 RPM) (Gas) (Outboard)   |       |        |   |   |
| 33834                      | TD9108  | 4    | Tachometer with Hourmeter (4000 RPM) (Diesel) (Mech takeoff & var ratio alt)  |       |        |   |   |
| 33841                      | TD9118  | 4    | Tachometer with Hourmeter (4000 RPM) (Diesel) (Mag Pick-Up)   |       |        |   |   |
| 33850                      | TC9881  | 4    | Tachometer (7000 RPM) with SystemCheck Indicator (Gas) (J/E Outboard)   |       |        |   |   |
| 33860                      | TC4025  | 4    | Tachometer (7000 RPM) with Suzuki Monitor (Gas) (Suzuki Outboard)   |       |        |   |   |
| GPS Speedometers           |         |      |   |       |        |   |   |
| 33829                      | SGP010  | 4    | Speedometer (80 MPH) (GPS)  |       |        |   |   |
| 33826                      | SGP003  | 4    | Speedometer (60 MPH) (GPS)  |       |        |   |   |
| 33839                      | SGP113  | 4    | Speedometer (60 MPH) (GPS) (Studded)  |       |        |   |   |
| 33827                      | SGP005  | 4    | Speedometer (50 KNOTS) (GPS)  |       |        |   |   |
| Speedometers               |         |      |   |       |        |   |   |
| 33811                      | SE9521  | 4    | Speedometer (60 MPH) (Mechanical)   |       |        |   |   |
| 33819                      | SE9522  | 4    | Speedometer (80 MPH) (Mechanical)   |       |        |   |   |
| 33821                      | SE9740  | 4    | Speedometer (30 Knot) (Mechanical)  |       |        |   |   |
| 33822                      | SE9741  | 4    | Speedometer (50 Knot) (Mechanical)  |       |        |   |   |
| Multi-Function Instruments |         |      |   |       |        |   |   |
| 33801                      | SY9629  | 4    | Synchronizer (Dual Engine)  |       |        |   |   |
| 33851                      | GF0008  | 4    | Multifunction [Fuel Level   Oil PSI (80 PSI)   Water Temp (100-250 F)   Voltmeter (10-16 VDC)]  |       |        |   |   |
| Indicators                 |         |      |   |       |        |   |   |
| 13801                      | GP9373  | 2    | Fuel Level Gauge (E-1/2-F)  | 13889 | GP7440 | 2 | Trim Gauge (Honda)  |
| 13818                      | GP9791  | 2    | Fuel Level Gauge (Metric)   | 13807 | GP9649 | 2 | Trim Gauge (Mercury/Mariner/Mercruiser/Volvo DP/ Yamaha-2001 and newer) |
| 13820                      | GP9781  | 2    | Tank Level Gauge (Potable water) (Metric)   |       |        |   |   |
| 13802                      | GP9647  | 2    | Oil Pressure Gauge (80 PSI)   | 13809 | GP9418 | 2 | Trim Gauge (J/E/Suzuki Outboard)  |
| 13803                      | GP9689  | 2    | Oil Pressure Gauge (100 PSI)  | 13808 | GP9734 | 2 | Trim Gauge (OMC Cobra/Volvo SX)   |
| 13825                      | GP9783  | 2    | Oil Pressure Gauge (10 BAR) (Metric)  | 13831 | AP9529 | 2 | Ammeter (60-0-60)   |
| 13826                      | GP9813  | 2    | Transmission Pressure (25 BAR/350 PSI) (Metric)   | 13823 | VP7911 | 2 | Battery Condition Indicator (12 VDC)                                    |
| 13812                      | OP1022  | 2    | Water Pressure Gauge Kit (30 PSI)   | 13891 | CL1026 | 2 | Clock (Quartz) (Analog)   |
| 13875                      | OP1043  | 2    | Water Pressure Gauge Kit (60 PSI)   | 13813 | MH0059 | 2 | Hourmeter (10,000 hrs) (12-32 VDC)                                      |
| 13806                      | GP9454  | 2    | Cylinder Head Temperature (60 - 220 F) with sender  | 13815 | MH0211 | 2 | Hourmeter [Digital] (12-32 volts)                                       |
| 13829                      | GP9784  | 2    | Cylinder Head Temperature (20 - 100 C) with sender  | 13822 | GP7378 | 2 | Rudder Angle Indicator  |
| 13804                      | GP9146  | 2    | Water Temperature Gauge (100-250 F)   | 13805 | VP9158 | 2 | Voltmeter (10-16 VDC)   |
| 13828                      | GP9178  | 2    | Water Temperature Gauge (40-120 C) (Metric)   |       |        |   |   |



## Coral

Perimeter-lighted black dial with stylish white and blue graphics, black aluminum bezel with burnished leading edge, contoured white pointer, and flat glass lens.

| Catalog                    | Factory | Size | Description  |  |       |        |   |   |  |
|----------------------------|---------|------|--|--|-------|--------|---|---|--|
| 13050                      | DS0112  | 2    | Depth Sounder (Thru-Hull Transducer) (Requires 1 5/8" hole in vessel.) |  |       |        |   |   |  |
| 13051                      | DS0112  | 2    | Depth Sounder (In-Hull Mounted Transducer)                             |  |       |        |   |   |  |
| Tachometers                |         |      |  |  |       |        |   |   |  |
| 33004                      | TC9493  | 4    | Tachometer (6000 RPM) (Gas) (Inboard & I/O)                            |  |       |        |   |   |  |
| 33005                      | TC9036  | 4    | Tachometer (7000 RPM) (All outboard)                                   |  |       |        |   |   |  |
| 33042                      | TD9126  | 4    | Tachometer (4000 RPM) (Diesel) (Mechanical takeoff & var ratio alt)    |  |       |        |   |   |  |
| 33003                      | TD9673  | 4    | Tachometer (4000 RPM) (Diesel) (Mag Pick-Up)                           |  |       |        |   |   |  |
| 33032                      | TC9126  | 4    | Tachometer with Hourmeter (6000 RPM) (Gas) (Inboard)                   |  |       |        |   |   |  |
| 33040                      | TCH011  | 4    | Tachometer with Hourmeter (7000 RPM) (Gas) (Outboard)                  |  |       |        |   |   |  |
| Speedometers               |         |      |  |  |       |        |   |   |  |
| 33009                      | SE9216  | 4    | Speedometer (55 MPH) (Mechanical)                                      |  |       |        |   |   |  |
| 33010                      | SE9218  | 4    | Speedometer (80 MPH) (Mechanical)                                      |  |       |        |   |   |  |
| Multi-Function Instruments |         |      |  |  |       |        |   |   |  |
| 33007                      | SY9601  | 4    | Synchronizer (Dual Engine)   |  |       |        |   |   |  |
| Indicators                 |         |      |  |  |       |        |   |   |  |
| 13001                      | GP9346  | 2    | Fuel Level Gauge (E-1/2-F)   |  | 13017 | GP9348 | 2 | Trim Gauge (Mercury/Mariner/Mercruiser/Volvo DP/ Yamaha-2001 and newer) |  |
| 13020                      | GP9390  | 2    | Fuel Level Gauge (Metric)  |  |       |        |   |   |  |
| 13002                      | GP9527  | 2    | Oil Pressure Gauge (80 PSI)  |  | 13016 | GP9273 | 2 | Trim Gauge (I/E/Suzuki Outboard)  |  |
| 13003                      | OP1000  | 2    | Water Pressure Gauge Kit (30 PSI)                                      |  | 13012 | VP7903 | 2 | Battery Condition Indicator (12 VDC)                                    |  |
| 13009                      | GP9405  | 2    | Cylinder Head Temperature (60 - 220 F) with sender                     |  | 13013 | MH0010 | 2 | Hourmeter (10,000 hrs) (12-32 VDC)                                      |  |
| 13004                      | GP9461  | 2    | Water Temperature Gauge (100-250 F)                                    |  | 13010 | VP9106 | 2 | Voltmeter (10-16 VDC)   |  |



The choice of the world's leading boat manufacturers since 1957.

All of our instruments are performance proven under the most demanding conditions. They are factory installed original equipment with major manufacturers worldwide. You can rely on Faria Beede Instruments, Inc. for world class quality, dependability and ease of installation.

Contact Faria Beede for OEM gauge replacements. Many of the OEM styles can still be purchased through our Marine distributors. Before you contact us, have a picture of the gauge and the part number readily available. This helps us to identify the gauge, so that we can assist you better.





## Dress White

Perimeter-lighted white dial with bold black graphics, white aluminum bezel, contoured black pointer, and flat glass lens.



| Catalog                    | Factory | Size | Description   |       |        |   |   |
|----------------------------|---------|------|---|-------|--------|---|---|
| KT9797                     | KT9797  |      | <b>Boxed Set</b> - Inboard (Speedo (55 MPH) (Mech)   Tach (6000 RPM)   Fuel Level   Voltmeter (10-16 VDC)   Water Temp (100-250 F)   Oil PSI (80 PSI) |       |        |   |   |
| KT9794                     | KT9794  |      | <b>Boxed Set</b> - Outboard (Speedo (55 MPH) (Mech)   Tach (7000 RPM)   Fuel Level   Voltmeter (10-16 VDC)  |       |        |   |   |
| Depth Sounders             |         |      |   |       |        |   |   |
| 13154                      | DS1009  | 2    | Depth Sounder with Air and Water Temperature  |       |        |   |   |
| 13150                      | DS0114  | 2    | Depth Sounder (Transom Mounted Transducer)  |       |        |   |   |
| 13151                      | DS0114  | 2    | Depth Sounder (In-Hull Mounted Transducer)  |       |        |   |   |
| 13194                      | DS0114  | 2    | Depth Sounder (Thru-Hull Transducer) (Requires 1 5/8" hole in vessel.)  |       |        |   |   |
| Tachometers                |         |      |   |       |        |   |   |
| 33103                      | TC9691  | 4    | Tachometer (6000 RPM) (Gas) (Inboard & I/O)   |       |        |   |   |
| 33104                      | TC9038  | 4    | Tachometer (7000 RPM) (All outboard)  |       |        |   |   |
| 33142                      | TD9124  | 4    | Tachometer (4000 RPM) (Diesel) (Mechanical takeoff & var ratio alt)   |       |        |   |   |
| 33121                      | TD9706  | 4    | Tachometer (4000 RPM) (Diesel) (Mag Pick-Up)  |       |        |   |   |
| 33132                      | TC9124  | 4    | Tachometer with Hourmeter (6000 RPM) (Gas) (Inboard)  |       |        |   |   |
| 33140                      | TCH013  | 4    | Tachometer with Hourmeter (7000 RPM) (Gas) (Outboard)   |       |        |   |   |
| 33150                      | TC9887  | 4    | Tachometer (7000 RPM) with SystemCheck Indicator (Gas) (I/E Outboard)   |       |        |   |   |
| GPS Speedometers           |         |      |   |       |        |   |   |
| 33147                      | SGP111  | 4    | Speedometer (60 MPH) (GPS) (Studded)  |       |        |   |   |
| Speedometers               |         |      |   |       |        |   |   |
| 33112                      | SE9475  | 4    | Speedometer (55 MPH) (Mechanical)   |       |        |   |   |
| 33113                      | SE9476  | 4    | Speedometer (80 MPH) (Mechanical)   |       |        |   |   |
| Multi-Function Instruments |         |      |   |       |        |   |   |
| 33105                      | SY9618  | 4    | Synchronizer (Dual Engine)  |       |        |   |   |
| 33151                      | GF0003  | 4    | Multifunction [Fuel Level   Oil PSI (80 PSI)   Water Temp (100-250 F)   Voltmeter (10-16 VDC)]  |       |        |   |   |
| Indicators                 |         |      |   |       |        |   |   |
| 13101                      | GP9389  | 2    | Fuel Level Gauge (E-1/2-F)  | 13122 | GP9712 | 2 | Trim Gauge (Mercury/Mariner/Mercruiser/Volvo DP/ Yamaha-2001 and newer) |
| 13117                      | GP9722  | 2    | Fuel Level Gauge (Metric)   |       |        |   |   |
| 13118                      | GP9723  | 2    | Tank Level Gauge (Potable water)  | 13123 | GP9711 | 2 | Trim Gauge (I/E/Suzuki Outboard)  |
| 13102                      | GP9573  | 2    | Oil Pressure Gauge (80 PSI)   | 13149 | AP9526 | 2 | Ammeter (60-0-60)   |
| 13108                      | OP1006  | 2    | Water Pressure Gauge Kit (30 PSI)   | 13152 | CL1014 | 2 | Clock (Quartz) (Analog)   |
| 13113                      | GP9444  | 2    | Cylinder Head Temperature (60 - 220 F) with sender  | 13121 | MH0036 | 2 | Hourmeter (10,000 hrs) (12-32 VDC)                                      |
| 13110                      | GP9120  | 2    | Water Temperature Gauge (100-250 F)   | 13130 | MH0240 | 2 | Hourmeter [Digital] (12-32 volts)                                       |
| 13112                      | GP9631  | 2    | Water Temperature Gauge (40-120 C) (Metric)   | 13120 | VP9139 | 2 | Voltmeter (10-16 VDC)   |

## Essex

Light-piped fire red pointers with stainless steel hubs. Red back-lighted, contoured silver dial with stylish black graphics, stainless steel bezel with domed fog resistant lens. (Deutsch connectorized cases.)

(Requires KTF065 Harness - HN0897 - Open lead connector to Instrument adapter (Deutsch connector) (3 pack) for additional Indicator connections.)




| Catalog        | Factory | Size | Description   |       |        |   |                                   |
|----------------|---------|------|---|-------|--------|---|-----------------------------------|
| KTF056         | KTF056  |      | Boxed Set - Outboard (Speedo (45 MPH) (GPS)   Tach w/ Hourmeter (7000 RPM)   Fuel Level   Voltmeter (10-16 VDC) |       |        |   |                                   |
| Depth Sounders |         |      |   |       |        |   |                                   |
| 16150          | DS0104  | 2    | Depth Sounder (Transom Mounted Transducer)  |       |        |   |                                   |
| 16151          | DS0104  | 2    | Depth Sounder (In-Hull Mounted Transducer)  |       |        |   |                                   |
| Indicators     |         |      |   |       |        |   |                                   |
| 22005          | GBC661  | 2    | Trim Gauge (Mercury/Mariner/Mercruiser/Volvo DP/ Yamaha-2001 and newer)   | 22007 | GBC663 | 2 | Trim Gauge (Honda)                |
| 22006          | GBC662  | 2    | Trim Gauge (J/E/Suzuki Outboard)  | 22008 | OP1186 | 2 | Water Pressure Gauge Kit (30 PSI) |



## Euro

Perimeter-lighted black dial with bold white graphics, black aluminum bezel, contoured white pointer, and flat glass lens.

| Catalog                    | Factory | Size | Description  |       |        |   |   |  |
|----------------------------|---------|------|--|-------|--------|---|---|--|
| KT9799                     | KT9799  |      | Boxed Set - Inboard (Speedo (55 MPH) (Mech)   Tach (6000 RPM)   Fuel Level   Voltmeter (10-16 VDC)   Water Temp (100-250 F)   Oil PSI (80 PSI) |       |        |   |   |  |
| KT9796                     | KT9796  |      | Boxed Set - Outboard (Speedo (55 MPH) (Mech)   Tach (7000 RPM)   Fuel Level   Voltmeter (10-16 VDC)  |       |        |   |   |  |
| Depth Sounders             |         |      |  |       |        |   |   |  |
| 12850                      | DS0101  | 2    | Depth Sounder (Transom Mounted Transducer)   |       |        |   |   |  |
| 12851                      | DS0101  | 2    | Depth Sounder (In-Hull Mounted Transducer)   |       |        |   |   |  |
| 12894                      | DS0101  | 2    | Depth Sounder (Thru-Hull Transducer) (Requires 1 5/8" hole in vessel.)   |       |        |   |   |  |
| Tachometers                |         |      |  |       |        |   |   |  |
| 32804                      | TC9643  | 4    | Tachometer (6000 RPM) (Gas) (Inboard & I/O)  |       |        |   |   |  |
| 32805                      | TC9011  | 4    | Tachometer (7000 RPM) (All outboard)   |       |        |   |   |  |
| 32842                      | TD9122  | 4    | Tachometer (4000 RPM) (Diesel) (Mechanical takeoff & var ratio alt)  |       |        |   |   |  |
| 32803                      | TD9671  | 4    | Tachometer (4000 RPM) (Diesel) (Mag Pick-Up)   |       |        |   |   |  |
| 32832                      | TC9122  | 4    | Tachometer with Hourmeter (6000 RPM) (Gas) (Inboard)   |       |        |   |   |  |
| 32840                      | TCH015  | 4    | Tachometer with Hourmeter (7000 RPM) (Gas) (Outboard)  |       |        |   |   |  |
| 32834                      | TD9102  | 4    | Tachometer with Hourmeter (4000 RPM) (Diesel) (Mech takeoff & var ratio alt)   |       |        |   |   |  |
| 32841                      | TD9112  | 4    | Tachometer with Hourmeter (4000 RPM) (Diesel) (Mag Pick-Up)  |       |        |   |   |  |
| 32850                      | TC9951  | 4    | Tachometer (7000 RPM) with SystemCheck Indicator (Gas) (I/E Outboard)  |       |        |   |   |  |
| 32860                      | TC4003  | 4    | Tachometer (7000 RPM) with Suzuki Monitor (Gas) (Suzuki Outboard)  |       |        |   |   |  |
| GPS Speedometers           |         |      |  |       |        |   |   |  |
| 32816                      | SGP110  | 4    | Speedometer (60 MPH) (GPS) (Studded)   |       |        |   |   |  |
| Speedometers               |         |      |  |       |        |   |   |  |
| 32808                      | SE9465  | 4    | Speedometer (35 MPH) (Mechanical)  |       |        |   |   |  |
| 32810                      | SE9463  | 4    | Speedometer (55 MPH) (Mechanical)  |       |        |   |   |  |
| 32812                      | SE9460  | 4    | Speedometer (80 MPH) (Mechanical)  |       |        |   |   |  |
| 32809                      | SE9659  | 4    | Speedometer (30 Knot) (Mechanical)   |       |        |   |   |  |
| 32811                      | SE9658  | 4    | Speedometer (50 Knot) (Mechanical)   |       |        |   |   |  |
| Multi-Function Instruments |         |      |  |       |        |   |   |  |
| 32807                      | SY9602  | 4    | Synchronizer (Dual Engine)   |       |        |   |   |  |
| 32851                      | GF0001  | 4    | Multifunction [Fuel Level   Oil PSI (80 PSI)   Water Temp (100-250 F)   Voltmeter (10-16 VDC)]   |       |        |   |   |  |
| Indicators                 |         |      |  |       |        |   |   |  |
| 12801                      | GP9357  | 2    | Fuel Level Gauge (E-1/2-F)   | 12828 | GP9374 | 2 | Trim Gauge (Mercury/Mariner/Mercruiser/Volvo DP/ Yamaha-2001 and newer) |  |
| 12802                      | GP9322  | 2    | Fuel Level Gauge (Metric)  |       |        |   |   |  |
| 12830                      | GP9324  | 2    | Tank Level Gauge (Potable water)   | 12827 | GP9305 | 2 | Trim Gauge (I/E/Suzuki Outboard)  |  |
| 12831                      | GP9326  | 2    | Tank Level Gauge (Potable water) (Metric)  | 12829 | GP9702 | 2 | Trim Gauge (OMC Cobra/Volvo SX)   |  |
| 12803                      | GP9599  | 2    | Oil Pressure Gauge (80 PSI)  | 12822 | AP9523 | 2 | Ammeter (60-0-60)   |  |
| 12845                      | GP9597  | 2    | Oil Pressure Gauge (100 PSI)   | 12823 | VP7901 | 2 | Battery Condition Indicator (12 VDC)                                    |  |
| 12805                      | GP9511  | 2    | Oil Pressure Gauge (5 BAR) (Metric)  | 12825 | CL1008 | 2 | Clock (Quartz) (Analog)   |  |
| 12807                      | GP9513  | 2    | Oil Pressure Gauge (10 BAR) (Metric)   | 12824 | MH0009 | 2 | Hourmeter (10,000 hrs) (12-32 VDC)                                      |  |
| 12810                      | OP1004  | 2    | Water Pressure Gauge Kit (30 PSI)  | 12835 | MH0232 | 2 | Hourmeter [Digital] (12-32 volts)                                       |  |
| 12875                      | OP1014  | 2    | Water Pressure Gauge Kit (60 PSI)  | 12833 | GP7373 | 2 | Rudder Angle Indicator  |  |
| 12819                      | GP9438  | 2    | Cylinder Head Temperature (60 - 220 F) with sender   | 12821 | VP9134 | 2 | Voltmeter (10-16 VDC)   |  |
| 12820                      | GP9440  | 2    | Cylinder Head Temperature (20 - 100 C) with sender   | 12860 | VP9191 | 2 | Voltmeter (20-32 VDC)   |  |
| 12812                      | GP9118  | 2    | Water Temperature Gauge (100-250 F)  |       |        |   |   |  |
| 12814                      | GP9124  | 2    | Water Temperature Gauge (40-120 C) (Metric)  |       |        |   |   |  |
| Blank Gauges               |         |      |  |       |        |   |   |  |
| 32861                      | TC9640  | 4    | Blank gauge fill   |       |        |   |   |  |
| 12861                      | AP9475  | 2    | Blank gauge fill   |       |        |   |   |  |





# Euro White

Perimeter-lighted white dial with bold black graphics, black aluminum bezel, contoured white pointer, and flat glass lens.



| Catalog                    | Factory | Size | Description   |  |       |        |   |   |
|----------------------------|---------|------|---|--|-------|--------|---|---|
| KT9798                     | KT9798  |      | <b>Boxed Set</b> - Inboard (Speedo (55 MPH) (Mech)   Tach (6000 RPM)   Fuel Level   Voltmeter (10-16 VDC)   Water Temp (100-250 F)   Oil PSI (80 PSI) |  |       |        |   |   |
| KT9795                     | KT9795  |      | <b>Boxed Set</b> - Outboard (Speedo (55 MPH) (Mech)   Tach (7000 RPM)   Fuel Level   Voltmeter (10-16 VDC)  |  |       |        |   |   |
| Depth Sounders             |         |      |   |  |       |        |   |   |
| 12950                      | DS0100  | 2    | Depth Sounder (Transom Mounted Transducer)  |  |       |        |   |   |
| 12951                      | DS0100  | 2    | Depth Sounder (In-Hull Mounted Transducer)  |  |       |        |   |   |
| 12994                      | DS0100  | 2    | Depth Sounder (Thru-Hull Transducer) (Requires 1 5/8" hole in vessel.)  |  |       |        |   |   |
| Tachometers                |         |      |   |  |       |        |   |   |
| 32904                      | TC9679  | 4    | Tachometer (6000 RPM) (Gas) (Inboard & I/O)   |  |       |        |   |   |
| 32905                      | TC9003  | 4    | Tachometer (7000 RPM) (All outboard)  |  |       |        |   |   |
| 32942                      | TD9123  | 4    | Tachometer (4000 RPM) (Diesel) (Mechanical takeoff & var ratio alt)   |  |       |        |   |   |
| 32903                      | TD9672  | 4    | Tachometer (4000 RPM) (Diesel) (Mag Pick-Up)  |  |       |        |   |   |
| 32932                      | TC9123  | 4    | Tachometer with Hourmeter (6000 RPM) Gas (Inboard)  |  |       |        |   |   |
| 32940                      | TCH014  | 4    | Tachometer with Hourmeter (7000 RPM) (Gas) (Outboard)   |  |       |        |   |   |
| 32934                      | TD9103  | 4    | Tachometer with Hourmeter (4000 RPM) (Diesel) (Mech takeoff & var ratio alt)  |  |       |        |   |   |
| 32950                      | TC9886  | 4    | Tachometer (7000 RPM) with SystemCheck Indicator (Gas) (I/E Outboard)   |  |       |        |   |   |
| Speedometers               |         |      |   |  |       |        |   |   |
| 32909                      | SE9473  | 4    | Speedometer (55 MPH) (Mechanical)   |  |       |        |   |   |
| 32910                      | SE9474  | 4    | Speedometer (80 MPH) (Mechanical)   |  |       |        |   |   |
| Multi-Function Instruments |         |      |   |  |       |        |   |   |
| 32951                      | GF0002  | 4    | Multifunction [Fuel Level   Oil PSI (80 PSI)   Water Temp (100-250 F)   Voltmeter (10-16 VDC)]  |  |       |        |   |   |
| Indicators                 |         |      |   |  |       |        |   |   |
| 12901                      | GP9358  | 2    | Fuel Level Gauge (E-1/2-F)  |  | 12916 | GP9709 | 2 | Trim Gauge (Mercury/Mariner/Mercruiser/Volvo DP/ Yamaha-2001 and newer) |
| 12919                      | GP9323  | 2    | Fuel Level Gauge (Metric)   |  |       |        |   |   |
| 12902                      | GP9596  | 2    | Oil Pressure Gauge (80 PSI)   |  | 12915 | GP9708 | 2 | Trim Gauge (I/E/Suzuki Outboard)  |
| 12926                      | GP9514  | 2    | Oil Pressure Gauge (10 BAR) (Metric)  |  | 12933 | VP7908 | 2 | Battery Condition Indicator (12 VDC)                                    |
| 12903                      | OP1005  | 2    | Water Pressure Gauge Kit (30 PSI)   |  | 12923 | CL1013 | 2 | Clock (Quartz) (Analog)   |
| 12910                      | GP9439  | 2    | Cylinder Head Temperature (60 - 220 F) with sender  |  | 12913 | MH0017 | 2 | Hourmeter (10,000 hrs) (12-32 VDC)                                      |
| 12904                      | GP9119  | 2    | Water Temperature Gauge (100-250 F)   |  | 12911 | VP9136 | 2 | Voltmeter (10-16 VDC)   |
| 12929                      | GP9125  | 2    | Water Temperature Gauge (40-120 C) (Metric)   |  | 12960 | VP9192 | 2 | Voltmeter (20-32 VDC)   |
| 12989                      | GP7448  | 2    | Trim Gauge (Honda)  |  |       |        |   |   |





## Euro Beige Stainless Steel

Perimeter-lighted beige dial with bold black graphics, polished stainless steel bezel, contoured black pointer, and domed glass lens.

| Catalog | Factory | Size | Description                                |
|---------|---------|------|--|
| 15151   | DS0103  | 2    | Depth Sounder (In-Hull Mounted Transducer) |

### Tachometers

|       |        |   |   |
|-------|--------|---|---|
| 35104 | TC9610 | 4 | Tachometer (6000 RPM) (Gas) (Inboard & I/O)           |
| 35105 | TC9016 | 4 | Tachometer (7000 RPM) (All outboard)                  |
| 35132 | TC9176 | 4 | Tachometer with Hourmeter (6000 RPM) Gas) (Inboard)   |
| 35140 | TCH027 | 4 | Tachometer with Hourmeter (7000 RPM) (Gas) (Outboard) |

### Speedometers

|       |        |   |                                   |
|-------|--------|---|-----------------------------------|
| 35122 | SE9899 | 4 | Speedometer (65 MPH) (Mechanical) |
|-------|--------|---|-----------------------------------|

### Indicators

|       |        |   |                                     |       |        |   |   |
|-------|--------|---|-------------------------------------|-------|--------|---|---|
| 15101 | GP9919 | 2 | Fuel Level Gauge (E-1/2-F)          | 15128 | GP9921 | 2 | Trim Gauge (Mercury/Mariner/Mercruiser/Volvo DP/ Yamaha-2001 and newer) |
| 15103 | GP9923 | 2 | Oil Pressure Gauge (80 PSI)         |       |        |   |   |
| 15110 | OP1064 | 2 | Water Pressure Gauge Kit (30 PSI)   | 15127 | GP9917 | 2 | Trim Gauge (I/E/Suzuki Outboard)  |
| 15112 | GP9131 | 2 | Water Temperature Gauge (100-250 F) | 15124 | MH0106 | 2 | Hourmeter (10,000 hrs) (12-32 VDC)                                      |
| 15121 | VP9104 | 2 | Voltmeter (10-16 VDC)               |       |        |   |   |



## Kronos

Polished Stainless Steel Bezel, Flat Glass Lens, Perimeter Lighted Spun Aluminum dial with Gold and Black graphics. Gold increments and Logo on dial are Embossed. All instruments include two piece Newport Pointer with White Hub.

| Catalog | Factory | Size | Description  |
|---------|---------|------|--|
| KTF024  | KTF024  |      | <b>Boxed Set</b> - Inboard (Speedo (60 MPH) (Mech)   Tach (6000 RPM)   Fuel Level  Voltmeter (10-16 VDC)   Water Temp (100-250 F)   Oil PSI (80 PSI) |

### Depth Sounders

|       |        |   |  |
|-------|--------|---|--|
| 19150 | DS0131 | 2 | Depth Sounder (Transom Mounted Transducer) |
| 19151 | DS0131 | 2 | Depth Sounder (In-Hull Mounted Transducer) |

### Tachometers

|       |        |   |   |
|-------|--------|---|---|
| 39004 | TC9983 | 4 | Tachometer (6000 RPM) (Gas) (Inboard & I/O)           |
| 39005 | TC9252 | 4 | Tachometer (7000 RPM) (All outboard)                  |
| 39007 | TD9388 | 4 | Tachometer (4000 RPM) (Diesel) (Mag Pick-Up)          |
| 39040 | TCH305 | 4 | Tachometer with Hourmeter (7000 RPM) (Gas) (Outboard) |

### Speedometers

|       |        |   |                                   |
|-------|--------|---|-----------------------------------|
| 39009 | SE9945 | 4 | Speedometer (60 MPH) (Mechanical) |
|-------|--------|---|-----------------------------------|

### Indicators

|       |        |   |                                     |       |        |   |   |
|-------|--------|---|-------------------------------------|-------|--------|---|---|
| 19001 | GP7683 | 2 | Fuel Level Gauge (E-1/2-F)          | 19005 | GP7681 | 2 | Trim Gauge (Mercury/Mariner/Mercruiser/Volvo DP/ Yamaha-2001 and newer) |
| 19002 | GP7684 | 2 | Oil Pressure Gauge (80 PSI)         |       |        |   |   |
| 19007 | OP1171 | 2 | Water Pressure Gauge Kit (30 PSI)   | 19020 | MH0144 | 2 | Hourmeter (10,000 hrs) (12-32 VDC)                                      |
| 19003 | GP7682 | 2 | Water Temperature Gauge (100-250 F) | 19004 | VP7102 | 2 | Voltmeter (10-16 VDC)   |





## Heavy Duty - Black

Perimeter-lighted black dial with bold white graphics, black aluminum SAE style bezel, contoured white pointer, and flat glass lens.



| Catalog     | Factory | Size | Description   |
|-------------|---------|------|---|
| Tachometers |         |      |   |
| 43000       | TD9135  | 4    | Tachometer (4000 RPM) (Diesel) (Mag Pick-Up)  |
| 43001       | TD9137  | 4    | Tachometer with Hourmeter (4000 RPM) (Diesel) (Mech takeoff & var ratio alt)                    |
| 43002       | TD9682  | 4    | Tachometer (4000 RPM) (Diesel) (Mag Pick-up)  |
| 43003       | TD9324  | 4    | Tachometer (4000 RPM) (Diesel) (Mech takeoff & var ratio alt)                                   |
| 43004       | TC9133  | 4    | Tachometer with Hourmeter (6000 RPM) (Gas)  |
| 43005       | TC9755  | 4    | Tachometer (6000 RPM) (Gas)   |
| 43006       | GF0036  | 4    | Multifunction [Fuel Level   Oil PSI (100 PSI)   Water Temp (100-250 F)   Voltmeter (10-18 VDC)] |
| Indicators  |         |      |   |
| 23000       | GP0707  | 2    | Fuel Level Gauge (E-1/2-F)  |
| 23001       | GP0633  | 2    | Water Temperature Gauge (100-250 F)   |
| 23002       | GP0629  | 2    | Oil Temperature Gauge (140-320 F/C)   |
| 23003       | GP0801  | 2    | Oil Pressure Gauge (80 PSI)   |
| 23004       | GP0829  | 2    | Oil Pressure Gauge (100 PSI)  |
| 23005       | AP0530  | 2    | Ammeter (30-0-30)   |
| 23006       | AP0526  | 2    | Ammeter (60-0-60)   |
| 23007       | VP0126  | 2    | Voltmeter (10-16 VDC)   |
| 23008       | VP0129  | 2    | Voltmeter (14-32 VDC)   |
| 23009       | VP0134  | 2    | Battery Condition Indicator (12 VDC)  |
| 23010       | MG0042  | 2    | Hourmeter (10,000 hrs) (12-32 VDC)  |
| 23011       | MG0232  | 2    | Hourmeter [Digital] (12-32 volts)   |
| 23012       | GP0716  | 2    | Warning Light Indicator (4 Icon)  |

## Heavy Duty - Silver

Perimeter-lighted black dial with bold white graphics, polished stainless steel SAE style bezel, contoured orange pointer, and flat glass lens.



| Catalog     | Factory | Size | Description   |       |        |  |
|-------------|---------|------|---|-------|--------|--|
| Tachometers |         |      |   |       |        |  |
| 44000       | TD9134  | 4    | Tachometer (4000 RPM) (Diesel) (Mag Pick-Up)  |       |        |  |
| 44001       | TD9136  | 4    | Tachometer with Hourmeter (4000 RPM) (Diesel) (Mech takeoff & var ratio alt)                    |       |        |  |
| 44002       | TD9679  | 4    | Tachometer (4000 RPM) (Mag Pick-up)   |       |        |  |
| 44003       | TD9323  | 4    | Tachometer with Hourmeter (4000 RPM) (Diesel) (Mech takeoff & var ratio alt)                    |       |        |  |
| 44004       | TC9132  | 4    | Tachometer with Hourmeter (6000 RPM) (Gas)  |       |        |  |
| 44005       | TC9754  | 4    | Tachometer (6000 RPM) (Gas)   |       |        |  |
| 44006       | GF0035  | 4    | Multifunction [Fuel Level   Oil PSI (100 PSI)   Water Temp (100-250 F)   Voltmeter (10-18 VDC)] |       |        |  |
| Indicators  |         |      |   |       |        |  |
| 24000       | GP0706  | 2    | Fuel Level Gauge (E-1/2-F)  | 24007 | VP0127 | 2 Voltmeter (10-16 VDC)                |
| 24001       | GP0632  | 2    | Water Temperature Gauge (100-250 F)   | 24008 | VP0132 | 2 Voltmeter (14-32 VDC)                |
| 24002       | GP0631  | 2    | Oil Temperature Gauge (140-320 F/C)   | 24009 | VP0133 | 2 Battery Condition Indicator (12 VDC) |
| 24003       | GP0802  | 2    | Oil Pressure Gauge (80 PSI)   | 24010 | MG0012 | 2 Hourmeter (10,000 hrs) (12-32 VDC)   |
| 24004       | GP0830  | 2    | Oil Pressure Gauge (100 PSI)  | 24011 | MG0239 | 2 Hourmeter [Digital] (12-32 volts)    |
| 24005       | AP0531  | 2    | Ammeter (30-0-30)   | 24012 | GP0715 | 2 Warning Light Indicator (4 Icon)     |
| 24006       | AP0525  | 2    | Ammeter (60-0-60)   |       |        |  |



**Made in the USA**



## Platinum

Polished Stainless Steel Bezel, Domed Fog-Resistant Lens, Perimeter Lighted Black dial with White and Silver graphics. Orange tipped black pointer.

(Requires KTF069 Harness - HN0503 - 12-inch - Instrument to Instrument Harness - Packard connectors for additional Indicator connections.)

| Catalog           | Factory | Size | Description  |
|-------------------|---------|------|--|
| KTF0183           | KTF0183 |      | <b>Boxed Set</b> - Outboard (Speedo (65 MPH) (Mech)   Tach (7000 RPM)   Fuel Level   Voltmeter (10-16 vDC) |
| <b>Indicators</b> |         |      |  |
| 22001             | GBC113  | 2    | Trim Gauge (J/E/Suzuki Outboard) (Packard connector)   |
| 22002             | GBC112  | 2    | Trim Gauge (Honda) (Packard connector)   |
| 22003             | GBC108  | 2    | Trim Gauge (Mercury/Mariner/Mercruiser/Volvo DP/Yamaha-2001 and newer) (Packard connector)                 |
| 22004             | OP1174  | 2    | Water Pressure Gauge Kit (30 PSI)  |



## Professional Red

Perimeter-lighted black dial with stylish red and white graphics, black aluminum bezel, tear-drop white pointer, and flat glass lens.

| Catalog                    | Factory | Size | Description   |       |        |   |   |
|----------------------------|---------|------|---|-------|--------|---|---|
| 12850                      | DS0101  | 2    | Depth Sounder (Transom Mounted Transducer)                            |       |        |   |   |
| 12851                      | DS0101  | 2    | Depth Sounder (In-Hull Mounted Transducer)                            |       |        |   |   |
| Tachometers                |         |      |   |       |        |   |   |
| 34607                      | TC9933  | 4    | Tachometer (6000 RPM) (Gas) (Inboard & I/O)                           |       |        |   |   |
| 34617                      | TC9026  | 4    | Tachometer (7000 RPM) (All outboard)                                  |       |        |   |   |
| 34642                      | TD9640  | 4    | Tachometer (4000 RPM) (Diesel) (Mechanical takeoff & var ratio alt)   |       |        |   |   |
| 34632                      | TC9152  | 4    | Tachometer with Hourmeter (6000 RPM) (Gas) (Inboard)                  |       |        |   |   |
| 34650                      | TC9934  | 4    | Tachometer (7000 RPM) with SystemCheck Indicator (Gas) (J/E Outboard) |       |        |   |   |
| Speedometers               |         |      |   |       |        |   |   |
| 34611                      | SE9777  | 4    | Speedometer (60 MPH) (Mechanical)                                     |       |        |   |   |
| 34619                      | SE9781  | 4    | Speedometer (80 MPH) (Mechanical)                                     |       |        |   |   |
| 34622                      | SE9779  | 4    | Speedometer (50 Knot) (Mechanical)                                    |       |        |   |   |
| Multi-Function Instruments |         |      |   |       |        |   |   |
| 34601                      | SY9671  | 4    | Synchronizer (Dual Engine)  |       |        |   |   |
| Indicators                 |         |      |   |       |        |   |   |
| 14601                      | GP7282  | 2    | Fuel Level Gauge (E-1/2-F)  | 14607 | GP7422 | 2 | Trim Gauge (Mercury/Mariner/Mercruiser/Volvo DP/ Yamaha-2001 and newer) |
| 14618                      | GP7283  | 2    | Fuel Level Gauge (Metric)   |       |        |   |   |
| 14602                      | GP7063  | 2    | Oil Pressure Gauge (80 PSI)   |       |        |   |   |
| 14612                      | OP1057  | 2    | Water Pressure Gauge Kit (30 PSI)                                     |       |        |   |   |
| 14675                      | OP1058  | 2    | Water Pressure Gauge Kit (60 PSI)                                     |       |        |   |   |
| 14606                      | GP7164  | 2    | Cylinder Head Temperature (60 - 220 F) with sender                    |       |        |   |   |
| 14604                      | GP7166  | 2    | Water Temperature Gauge (100-250 F)                                   |       |        |   |   |
| 14609                      | GP7356  | 2    | Trim Gauge (J/E/Suzuki Outboard)                                      |       |        |   |   |
| 14613                      | MH0096  | 2    | Hourmeter (10,000 hrs) (12-32 VDC)                                    |       |        |   |   |
| 14605                      | VP7042  | 2    | Voltmeter (10-16 VDC)   |       |        |   |   |

## Spun Silver

Perimeter-lighted silver dial with bold black graphics, polished stainless steel bezel, contoured black pointer, and domed glass lens.



| Catalog        | Factory | Size | Description   |       |        |   |   |
|----------------|---------|------|---|-------|--------|---|---|
| KTF0184        | KTF0184 |      | <b>Boxed Set</b> - Inboard (Speedo (65 MPH) (Mech)   Tach (7000 RPM)   Fuel Level   Voltmeter (10-16 VDC)   Water Temp (100-250 F)   Oil PSI (80 PSI) |       |        |   |   |
| KTF0182        | KTF0182 |      | <b>Boxed Set</b> - Outboard (Speedo (65 MPH) (Mech)   Tach (7000 RPM)   Fuel Level   Voltmeter(10-16 VDC)   |       |        |   |   |
| Depth Sounders |         |      |   |       |        |   |   |
| 16150          | DS0104  | 2    | Depth Sounder (Transom Mounted Transducer)  |       |        |   |   |
| 16151          | DS0104  | 2    | Depth Sounder (In-Hull Mounted Transducer)  |       |        |   |   |
| Tachometers    |         |      |   |       |        |   |   |
| 36004          | TC9476  | 4    | Tachometer (6000 RPM) (Gas) (Inboard & I/O)   |       |        |   |   |
| 36005          | TC9004  | 4    | Tachometer (7000 RPM) (All outboard)  |       |        |   |   |
| 36032          | TC9196  | 4    | Tachometer with Hourmeter (6000 RPM) (Gas) (Inboard)  |       |        |   |   |
| 36050          | TC9478  | 4    | Tachometer (7000 RPM) with SystemCheck Indicator (Gas) (I/E Outboard)   |       |        |   |   |
| 36051          | TC4027  | 4    | Tachometer (7000 RPM) with Suzuki Monitor (Gas) (Suzuki Outboard)   |       |        |   |   |
| Speedometers   |         |      |   |       |        |   |   |
| 36009          | SE9402  | 4    | Speedometer (55 MPH) (Mechanical)   |       |        |   |   |
| 36010          | SE9910  | 4    | Speedometer (65 MPH) (Mechanical)   |       |        |   |   |
| 36011          | SE9403  | 4    | Speedometer (80 MPH) (Mechanical)   |       |        |   |   |
| Indicators     |         |      |   |       |        |   |   |
| 16001          | GP9932  | 2    | Fuel Level Gauge (E-1/2-F)  | 16016 | GP9223 | 2 | Trim Gauge (Mercury/Mariner/Mercruiser/Volvo DP/ Yamaha-2001 and newer) |
| 16002          | GP9623  | 2    | Oil Pressure Gauge (80 PSI)   | 16017 | GP9224 | 2 | Trim Gauge (I/E/Suzuki Outboard)  |
| 16003          | OP1101  | 2    | Water Pressure Gauge Kit (30 PSI)   | 16020 | MH0114 | 2 | Hourmeter (10,000 hrs) (12-32 VDC)                                      |
| 16004          | GP9428  | 2    | Water Temperature Gauge (100-250 F)   | 16023 | VP9223 | 2 | Voltmeter (10-16 VDC)   |



*Repair costs can get expensive.*

**Restore • Replace • Rebuild • Repower**

*with Boxed Sets from Faria Beede. A cost effective OEM gauge replacement option.*

Boxed Sets offer a complete set of instruments and everything you need to replace your old OEM installed instruments.

With many styles to choose from, Faria Beede has the look you want and savings that is easy on the budget.

When upgrading your engine don't forget about your instruments.

Faria Beede has an easy plug and play instrument replacement set that works with your new engine.







## Digital Black Fade

Back-lighted white dial with bold black graphics, polished stainless steel bezel, light-piped fire red pointer and black hub, and domed glass lens.

Specifically designed to work with the leading engine manufactures. The MG3000 Black Fade offer the boat manufacturer and enthusiast the most cost effective options for engine monitoring.

| Catalog | Factory | Size | Description  |
|---------|---------|------|--|
| KTF032  | KTF032  |      | <b>Boxed Set</b> - Tachometer (7000 RPM) ( <b>NMEA 2000</b> ) (MG3000)   Speedometer (60 MPH) (MG1000)   Water Pressure Gauge (60 PSI) (MG Digital)   Trim Gauge (MG Digital)      |
| KTF042  | KTF042  |      | <b>Boxed Set</b> - Tachometer (7000 RPM) ( <b>SmartCraft</b> ) (MG3000)   Speedometer (60 MPH) (MG1000)   Water Pressure Gauge (60 PSI) (MG Digital)   Trim Gauge (MG Digital)     |
| KTF060  | KTF060  |      | <b>Boxed Set</b> - Tachometer (7000 RPM) ( <b>Yamaha</b> ) (MG3000)   Speedometer (70 MPH/115 KPH) (MG3000)   Water Pressure Gauge (60 PSI) (MG Digital)   Trim Gauge (MG Digital) |
| KTF034  | KTF034  |      | <b>Boxed Set</b> - Tachometer (7000 RPM) ( <b>NMEA 2000</b> ) (MG3000)   Speedometer (60 MPH)(MG1000)  |
| KTF043  | KTF043  |      | <b>Boxed Set</b> - Tachometer (7000 RPM) ( <b>SmartCraft</b> ) (MG3000)   Speedometer (60 MPH)(MG1000)   |
| KTF059  | KTF059  |      | <b>Boxed Set</b> - Tachometer (7000 RPM) ( <b>Yamaha</b> ) (MG3000)   Speedo (70 MPH/115 KPH) (MG3000)   |

### Tachometers

|       |        |   |  |  |
|-------|--------|---|--|--|
| 41007 | MGT019 | 5 | Tachometer (7000 RPM) ( <b>NMEA 2000</b> ) (MG3000)  |  |
| 41020 | MGT040 | 5 | Tachometer (5000 RPM) ( <b>NMEA 2000</b> ) (MG3000)  |  |
| 41001 | MGT017 | 4 | Tachometer (7000 RPM) ( <b>NMEA 2000</b> ) (MG3000)  |  |
| 41008 | MGT045 | 5 | Tachometer (7000 RPM) ( <b>SmartCraft</b> ) (MG3000) |  |
| 41002 | MGT018 | 4 | Tachometer (7000 RPM) ( <b>SmartCraft</b> ) (MG3000) |  |
| 41021 | MGT053 | 4 | Tachometer (7000 RPM) ( <b>Yamaha</b> ) (MG3000)     |  |

### Speedometers

|       |        |   |  |
|-------|--------|---|--|
| 41006 | MGS028 | 5 | Speedometer (70 MPH) (Depth Sounder) (MG3000) (No Pitot)           |
| 41003 | SG0007 | 4 | Speedometer (60 MPH/100 KPH) (MG1000) (No Pitot)                   |
| 41029 | MGS032 | 4 | Speedometer (70 MPH/115 KPH) ( <b>Yamaha</b> ) (MG3000) (No Pitot) |
| 41005 | MGS010 | 4 | Speedometer (70 MPH/115 KPH) (Depth Sounder) (Pitot Port) (MG3000) |

### Multi-Function Instruments

|       |        |   |   |
|-------|--------|---|---|
| 41028 | SG7008 | 4 | Multifunction [Fuel Level   Oil PSI (100 PSI)   Water Temp (100-250 F)   Voltmeter (10-16 VDC)] |
|-------|--------|---|---|

### Indicators - requires KTF069 harness

|       |        |   |  |       |        |   |   |
|-------|--------|---|--|-------|--------|---|---|
| 21001 | GE0166 | 2 | Fuel Level Gauge (MG Digital)                    | 21006 | GE0170 | 2 | Oil Pressure Gauge (100 PSI) (MG Digital) |
| 21004 | VE0026 | 2 | Voltmeter (10-16 VDC) (MG Digital)               | 21002 | GE0167 | 2 | Trim Gauge (MG Digital)                   |
| 21003 | GE0168 | 2 | Water Pressure Gauge (60 PSI) (MG Digital)       | 21007 | GE0176 | 2 | Tank Level Gauge (Water) (MG Digital)     |
| 21005 | GE0169 | 2 | Water Temperature Gauge (100-250°F) (MG Digital) | 21008 | GE0177 | 2 | Rudder Angle Indicator (MG Digital)       |

## Digital Harnesses and Accessories

The perfect companion for our Digital instruments. Whether you are re-powering or connecting for the first time, use these harnesses to connect your Digital instruments to the Engine ECU.

|        |        |  |
|--------|--------|--|
| KTF033 | KTF033 | Harness - HN0854 - Suzuki NMEA 2000 (Engine to Back Bone) - Use with KTF138 and KTF037 (Sold separately) |
| KTF035 | KTF035 | Harness - HN0855 - Honda NMEA 2000 (Engine to Back Bone) - Use with KTF138 and KTF037 (Sold separately)  |
| KTF036 | KTF036 | Harness - HN0856 - Yamaha NMEA 2000 (Engine to Back Bone) - Use with KTF138 and KTF037 (Sold separately) |
| KTF0XX | KTF0XX | Harness - HN0763 - Volvo NMEA 2000 (Engine to Back Bone) - Use with KTF138 and KTF037 (Sold separately)  |
| KTF037 | KTF037 | Harness - HN0898 - NMEA 2000 (Tachometer to Back Bone)   |
| KTF044 | KTF044 | Harness - HN0847 - SmartCraft (Tachometer to Back Bone)  |
| KTF070 | KTF070 | Harness - HN0428 - Yamaha (Tachometer to Back Bone)  |
| KTF138 | KTF138 | Harness - NMEA 2000 Mini Back Bone Harness   |
| KTF051 | KTF051 | Harness - HN0862 - Speedometer to Depth Sounder (Deutsch connector)                                      |
| KTF065 | KTF065 | Harness - HN0897 - Open lead connector to Instrument adapter (Deutsch connector) (3 pack)                |
| KTF069 | KTF069 | Harness - HN0503 - 12-inch - Instrument to Instrument Harness - Packard connectors                       |

### GPS Antenna

|        |        |   |
|--------|--------|---|
| KTF067 | GPS106 | GPS Receiver - NMEA 0183 with Deutsch connector |
|--------|--------|---|

### Lighting Replacements

|        |        |  |
|--------|--------|--|
| KTF053 | LM0067 | LIGHTING [LED ] (Bulb replacement pack (BLUE) (4 inch gauges) (2 pack) |
| KTF052 | LM0078 | LIGHTING [LED ] (Bulb replacement pack (BLUE) (2 inch gauges) (2 pack) |

**Made For  
Your Engine!**



# Transducers, Pitots and GPS Antenna

*Combined with our Depth Sounders and other electronic instrumentation these transducers and senders offer a wide range of options to fit your needs.*

| Catalog | Factory | Description   |
|---------|---------|---|
| KTF072  | KTF072  | Harness - HN0337 - Extension cable for transducers. (22 foot) (Deutsch connector) |



## SN2010 Adjustable In-hull Transducer

This in-hull transducer has a patented adjustable feature which ensures that sound waves are transmitted vertically to the bottom on almost any hull with a dead rise up to 22°. With no hull penetration, installation is easy and high speed performance is maximized.



## SN2011 Transom Mounted Depth Transducer

With a low profile this depth unit offers little drag and easy installation for dead rise angles up to 30°. Designed with a release bracket to protect against impact damage. This unit provides good high speed operations up to 55 knots.



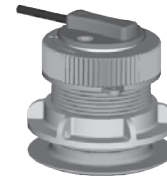
## SN2060 Thru-hull Transducer

1 5/8" thru hull depth transducer. (Requires 1 5/8" hole in vessel.)



## SN0007 - Transom Mounted Non-Clogging Speed Sender

Transom mounted, the paddle wheel and housing do not project beyond the hull allowing for minimal drag and spray. Unlike pilot tubes this speed sensor will not be damaged by beaching or other impact. This sensor comes with an adjustable bracket allowing mounting to a 3° to 16° angled Transom.



## SN0015 Thru-hull Flush Mounted Temperature and Speed Sender

Perfect for water sports which require continuous accurate speed measurements like water-skiing, where boat angles can sometimes interrupt transom mounted senders. The thru-hull flush mounted temperature and speed sender offer virtually no drag. Easy installation and accuracy makes this sender the perfect choice for water sports. (Requires 1 5/8" hole in vessel.)



## Pitot Tubes Assembly Kits

Complete transom mount speedometer pick-up with escutcheon plate and mounting hardware (two choices of tubing length) for use with all marine speedometers.

| Catalog | Factory | Description   |
|---------|---------|---|
| 91109   | KS9007  | PITOT KIT (Universal)                               |
| 91106   | KS9003  | PITOT KIT (Universal) (20 ft. tubing)               |
| 91105   | CG0001  | PITOT KIT (Escutcheon cover plate for pitot tubing) |



## KTF067 External NMEA 0183 GPS Antenna

The new GPS antenna from Faria Beede is small in size but packs a lot inside. The Faria Beede GPS antenna uses a highly accurate 48 channel GPS receiver.

Designed to connect directly into the NMEA0183 harness. Use the new GPS antenna wherever you would use the current GPS antennas. Ultra fast Satellite acquisition times (TTFF), with Speed Accuracy of +/- 1 MPH. Works better than the traditional GPS antennas at just a fraction of the size.

## Accessories - Senders

### Fuel Level Senders

SAE 5 hole flange, adjustable for left or right arm movements and various tank depths. Includes gasket and screws and 2 #10 stud terminals.

Sealing gasket and mounting hardware required.

| Catalog | Factory | Description  |
|---------|---------|--|
| 91001   | LS6025  | SENDER (Fuel Level) (American 8-16 inch) (Single)  |
| 91003   | LS6026  | SENDER (Fuel Level) (American 14-24 inch) (Single) |
| 91005   | LS6028  | SENDER (Fuel Level) (European 20-40 cm) (Single)   |
| 91007   | LS6027  | SENDER (Fuel Level) (European 36-60 cm) (Single)   |
| 91017   | PL1040  | SENDER (FUEL LEVEL INSTALLATION KIT)               |



(For Tanks 6 to 25" deep)

### Temperature Senders

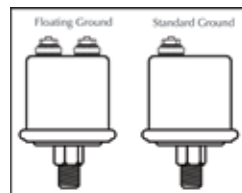
- 1/8" NPTF
- A wide variety of sender types
- Metric and Standard values available

| Catalog | Factory | Description   |
|---------|---------|---|
| 90401   | TS1029  | SENDER (Temperature) (1/8) (American Single Standard) |
| 90402   | TS2035  | SENDER (Temperature) (1/4) (American Single Standard) |
| 90403   | TS3044  | SENDER (Temperature) (3/8) (American Single Standard) |
| 90404   | TS4042  | SENDER (Temperature) (1/2) (American Single Standard) |
| 90410   | TS1055  | SENDER (Temperature) (1/8) (American Single Float)    |
| 90406   | TS1056  | SENDER (Temperature) (1/8) (American Dual Standard)   |
| 90412   | TS1058  | SENDER (Temperature) (1/8) (European Single Standard) |
| 90413   | TS1059  | SENDER (Temperature) (1/8) (European Single Float)    |
| 90405   | TS5026  | SENDER (Cylinder Head Temperature)                    |



### Pressure Senders

- 1/8" NPTF
- A wide variety of sender types
- Metric and Standard values available



| Catalog | Factory | Description   |
|---------|---------|---|
| 90512   | SD0003  | SENDER (Oil Pressure) (1/8 NPTF American 80 PSI) (Single Standard)  |
| 90513   | SD0024  | SENDER (Oil Pressure) (1/8 NPTF American 80 PSI) (Single Float)     |
| 90511   | SD0025  | SENDER (Oil Pressure) (1/8 NPTF American 80 PSI) (Dual Standard)    |
| 90516   | SD0031  | SENDER (Oil Pressure) (1/8 NPTF European 5 BAR) (Single Float)      |
| 90517   | SD0032  | SENDER (Oil Pressure) (1/8 NPTF European 5 BAR) (Dual Standard)     |
| 90519   | SD0006  | SENDER (Oil Pressure) (1/8 NPTF American 100 PSI) (Single Standard) |
| 90526   | SD0035  | SENDER (Oil Pressure) (1/8 NPTF European 10 BAR) (Single Standard)  |
| 90527   | SD0036  | SENDER (Oil Pressure) (1/8 NPTF European 10 BAR) (Single Float)     |



### Other Senders

| Catalog | Factory | Description  |
|---------|---------|--|
| 90530   | SD0041  | SENDER (Rudder Angle) (Single station) (Standard or Floating ground) |
| 90531   | SD0039  | SENDER (Rudder Angle) (Dual station) (Standard or Floating ground)   |
| 90901   | DK9005  | SENDER (Tachometer) (Diesel) (Mechanical takeoff)                    |



# Specifications

Our instruments are manufactured by Faria Beede Instruments., Inc. in Uncasville Connecticut, USA. Each instrument has been manufactured in an ISO:9001 2008 registered facility, built to stringent standards and has passed a comprehensive quality control procedure prior to shipment. Each instrument is backed by the Faria Beede Limited Warranty.

## 4" & 5" Electronic Instruments

|                       |  |
|-----------------------|--|
| Operating Temperature | -4 °F to +158 ° F (-20 ° C to +70 ° C)   |
| Storage Temperature   | -22 ° F to +185 ° F (-30 ° C to +85 ° C)                                       |
| Lighting              | See product line for specific information                                      |
| Operating Voltage     | 11.5 to 16 volts   |
| Nominal Voltage       | 14.2 volts   |
| Current Consumption   | < 100 mA, without illumination   |
| Bezel                 | Stainless Steel or Aluminum - see product line for specific information        |
| Lens                  | Glass or Poly carbonate - see product line for specific information            |
| Connection            | Studs, blade terminals, connectors - see product line for specific information |
| Mounting Bracket      | Plastic mounting clamp. Clamping range 0 -.8" (0-20 mm)                        |
| Torque                | 5 to 7 inch pounds (.57 - .80 Nm)  |
| Mounting Hole         | 3 3/8" (85 mm) for 4" Instrument – 4 3/8" (112 mm) for 5" Instrument           |

## 4" & 5" Mechanical Instruments

|                       |   |
|-----------------------|---|
| Operating Temperature | -22 ° F to +185 ° F (-30 ° C to +85 ° C)                                |
| Storage Temperature   | -40 ° F to +221 ° F (-40 ° C to +105 ° C)                               |
| Lighting              | See product line for specific information                               |
| Bezel                 | Stainless Steel or Aluminum - see product line for specific information |
| Lens                  | Glass or Poly carbonate - see product line for specific information     |
| Connection            | Studs, blade terminals - see product line for specific information      |
| Mounting Bracket      | Plastic mounting clamp. Clamping range 0 -.8" (0-20 mm)                 |
| Torque                | 5 to 7 inch pounds (.57 - .80 Nm)                                       |
| Mounting Hole         | 3 3/8" (85 mm) for 4" Instrument – 4 3/8" (112 mm) for 5" Instrument    |

## 2" Electronic Instruments

|                       |  |
|-----------------------|--|
| Operating Temperature | -4 ° F to +158 °F (-20 ° C to +70 ° C)   |
| Storage Temperature   | -22 ° F to +185 °F (-30 ° C to +85 ° C)  |
| Lighting              | See product line for specific information                                      |
| Operating Voltage     | 11.5 to 16 volts   |
| Nominal Voltage       | 14.2 volts   |
| Current Consumption   | < 100 mA, without illumination   |
| Bezel                 | Stainless Steel or Aluminum - see product line for specific information        |
| Lens                  | Glass or Poly carbonate - see product line for specific information            |
| Connection            | Studs, blade terminals, connectors - see product line for specific information |
| Mounting Bracket      | Plastic mounting clamp. Clamping range 0 -.8" (0-20 mm)                        |
| Torque                | 5 to 7 inch pounds (.57 - .80 Nm)  |
| Mounting Hole         | 2 1/16" (53 mm) for 2" Instrument  |

## 2" Mechanical Instruments

|                       |   |
|-----------------------|---|
| Operating Temperature | -22 ° F to +185 °F (-30 ° C to +85 ° C)                                 |
| Storage Temperature   | -40 ° F to +221 °F (-40 ° C to +105 ° C)                                |
| Lighting              | See product line for specific information                               |
| Bezel                 | Stainless Steel or Aluminum - see product line for specific information |
| Lens                  | Glass or Poly carbonate - see product line for specific information     |
| Connection            | Studs, blade terminals - see product line for specific information      |
| Mounting Bracket      | Plastic clamp, metal on water pressure. Clamping range 0 -.8" (0-20 mm) |
| Torque                | 5 to 7 inch pounds (.57 - .80 Nm)                                       |
| Mounting Hole         | 2 1/16" (53 mm) for 2" Instrument                                       |