



FISH FIGHTER[™]
Products

***DRIFT BOAT
ANCHORS***





FISH FIGHTER[™]
Products

***RELENTLESS IN THE
PURSUIT OF BIG FISH***



TABLE OF CONTENTS

Eco Friendly™ Lake and Drift Boat Anchors.....	Pgs. 1-4
Drift Boat Anchor Claw.....	Pgs. 5
Drift Boat Anchor Nest.....	Pgs. 6-11
Dangers of Anchoring	Pgs. 12
Understanding Scope	Pgs. 12
Dropping Anchor	Pgs. 13-14
Using drift boat anchors	Pgs. 15

ECO-FRIENDLY™ LAKE AND DRIFT BOAT ANCHORS

PART #	DESCRIPTION	DIMENSIONS
ITD5187	Eco-Friendly™ Lake Anchor FFP Variable Weight 10 to 45 Lb.	7" x 7" x 10"
ITD5203	Eco-Friendly™ Drift Boat Anchor FFP Variable Weight 10 to 30 Lb.	6 1/2" x 6 1/2" x 8 3/4"
ITD5202	Eco-Friendly™ Drift Boat Anchor FFP Variable Weight 10 to 20 Lb.	5 1/2" x 5 1/2" x 7 3/4"

ITD5187



(ITD5187) Eco-Friendly™ Lake Anchor Includes:			
QTY	DESCRIPTION	QTY	DESCRIPTION
1	5/16" Shackle	3	5 1/2" x 5 1/2" (2 lbs.) Plate
1	Handle	2	5" x 5" (1 3/4 lbs.) Plate
1	1/4" - 20 Nylock Nut	2	4 1/2" x 4 1/2" (1 3/8 lbs.) Plate
1	1/4" x 3/4" Hex Bolt	2	4" x 4" (1 lb.) Plate
3	7" x 7" (3 1/2 lbs.) Plate	2	3 1/2" x 3 1/2" (3/4 lbs.) Plate
3	6 1/2" x 6 1/2" (3 lbs.) Plate	2	3" x 3" (1/2 lb.) Plate
3	6" x 6" (2 1/2 lbs.) Plate	2	2 1/2" x 2 1/2" (3/8 lbs.) Plate
2	2" x 2" (1/4 lb.) Plate		

ITD5203



(ITD5203) Eco-Friendly™ Drift Boat Anchor Includes:			
QTY	DESCRIPTION	QTY	DESCRIPTION
1	5/16" Shackle	2	5" x 5" (1 3/4 lbs.) Plate
1	Handle	2	4 1/2" x 4 1/2" (1 3/8 lbs.) Plate
1	1/4" - 20 Nylock Nut	2	4" x 4" (1 lb.) Plate
1	1/4" x 3/4" Hex Bolt	2	3 1/2" x 3 1/2" (3/4 lbs.) Plate
3	6 1/2" x 6 1/2" (3 lbs.) Plate	2	3" x 3" (1/2 lb.) Plate
3	6" x 6" (2 1/2 lbs.) Plate	2	2 1/2" x 2 1/2" (3/8 lbs.) Plate
3	5 1/2" x 5 1/2" (2 lbs.) Plate	2	2" x 2" (1/4 lb.) Plate

ITD5202

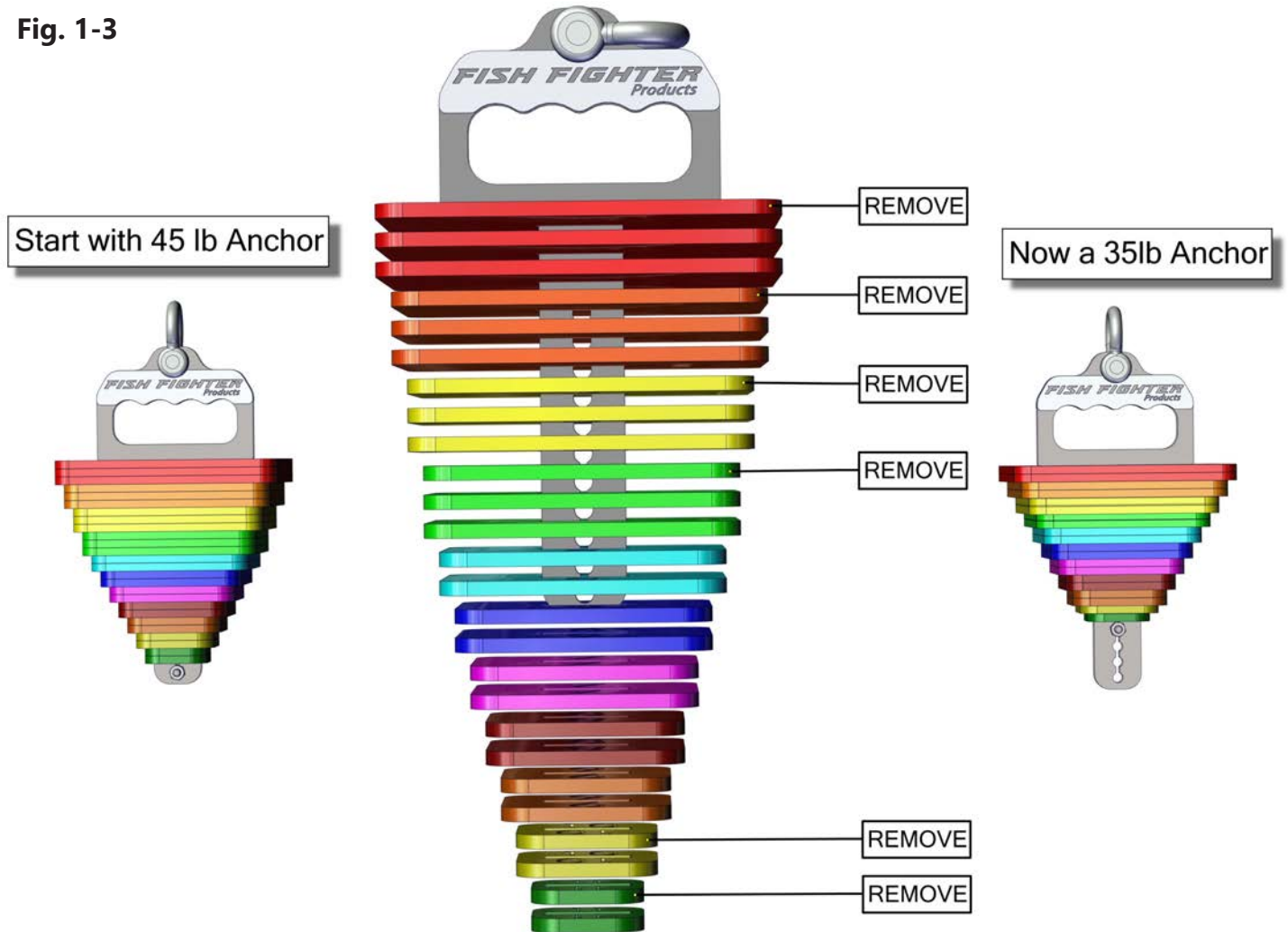


(ITD5202) Eco-Friendly™ Drift Boat Anchor Includes:			
QTY	DESCRIPTION	QTY	DESCRIPTION
1	5/16" Shackle	2	4 1/2" x 4 1/2" (1 3/8 lbs.) Plate
1	Handle	2	4" x 4" (1 lb.) Plate
1	1/4" - 20 Nylock Nut	2	3 1/2" x 3 1/2" (3/4 lbs.) Plate
1	1/4" x 3/4" Hex Bolt	2	3" x 3" (1/2 lb.) Plate
3	5 1/2" x 5 1/2" (2 lbs.) Plate	2	2 1/2" x 2 1/2" (3/8 lbs.) Plate
2	5" x 5" (1 3/4 lbs.) Plate	2	2" x 2" (1/4 lb.) Plate

FFP Variable Weight System™

The FFP Variable Weight System™ allow you to adjust the weight of your FFP Drift Anchor or Lake Anchor. We designed a series of plates in varying weights that will slide onto the Weight Handle. Adding or removing weight is as simple as adding or removing a Weight Plate. By making our weight plates out of steel they are more environmentally friendly than using lead. We encourage all anglers to stop leaving lead streaks on our river bottoms and switch to eco-friendly™ steel FFP Anchors. This can be very important in drift fishing so you can adjust the weight of your anchor to match water flows so you get that perfect drift.

Fig. 1-3



FFP Variable Weight System™ Configurations

The FFP Variable Weight System™ allows you to stack the weight plates in any order you want to get the perfect shape for your application.



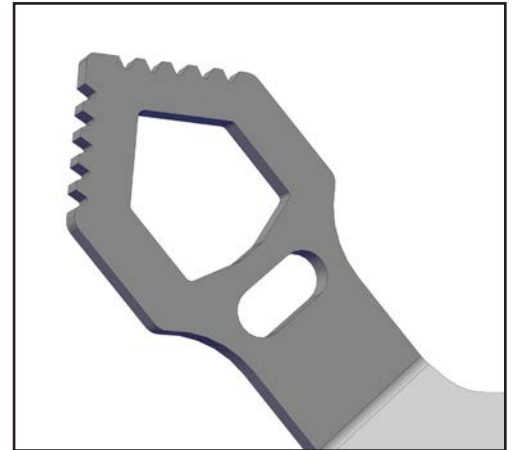
DRIFT BOAT ANCHOR CLAW

PART #	DESCRIPTION	DIMENSION
ITD5205	Drift Boat Anchor Claw	11 3/16" x 11 3/16" x 2 1/4"

ITD5205



The Drift Boat Anchor Claw allows you to gain some advantages of the FFP Grouser Fluke System™. The Drift Boat Anchor Claw is not compatible with our Anchor Spade Kits.



Drift Boat Anchor Claw Configurations

The FFP Variable Weight System™ allows you to stack the weight plates in any order you want to get the perfect shape for your application. This also allows you to place your Drift Boat Anchor Claw anywhere in the weight plate stacking order. Top, bottom, or even in the middle.



DRIFT BOAT ANCHOR NESTS

PART #	DESCRIPTION
ITD5270	Drift Boat Anchor Nest for 10-45 lb. Pyramid Anchors
ITD5269	Drift Boat Anchor Nest for 10-30 lb. Pyramid Anchors
ITD5210	Drift Boat Anchor Nest for 10-20 lb. Pyramid Anchors

Drift Boat Anchor Nests Include:



- (1) Lockable Anchor Nest with Locking Clip
(Pad-Lock not included)
- (1) Trailer Mounting Brackets and Bolts for Trailers with
Max Trailer Frame of 2" x 4"
- (1) Deck/Floor Mount Brackets with Rubber Feet Pads
(Can also be bolted to flooring)
- 60 Degree Angle Brackets for Angled Transoms
- 90 Degree Brackets for Straight Transoms

Multiple Mounting Options



The Drift Boat Anchor Nest has been designed to provide multiple options to fit any users mounting needs.

The lock bar can be mounted to hinge from either side of the nest.



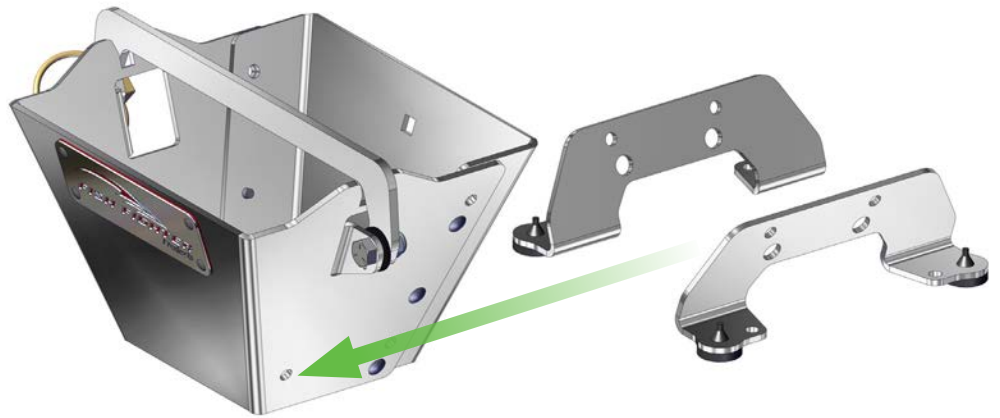
WARNING



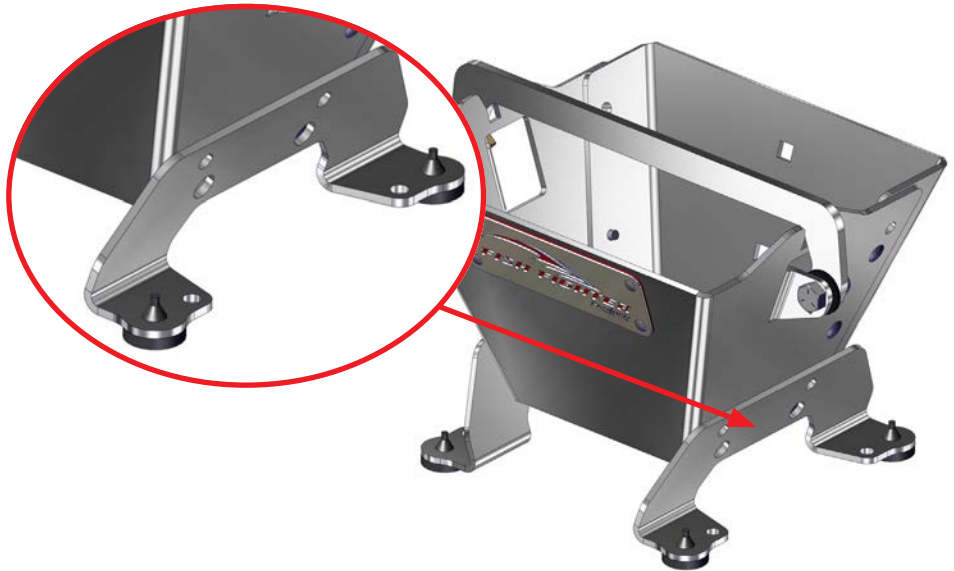
It is up to the installer to ensure that the Drift Boat Anchor Nest has been securing installed and any transported anchor is locked

Drift Boat Anchor Nests Assembly (Floor Mount)

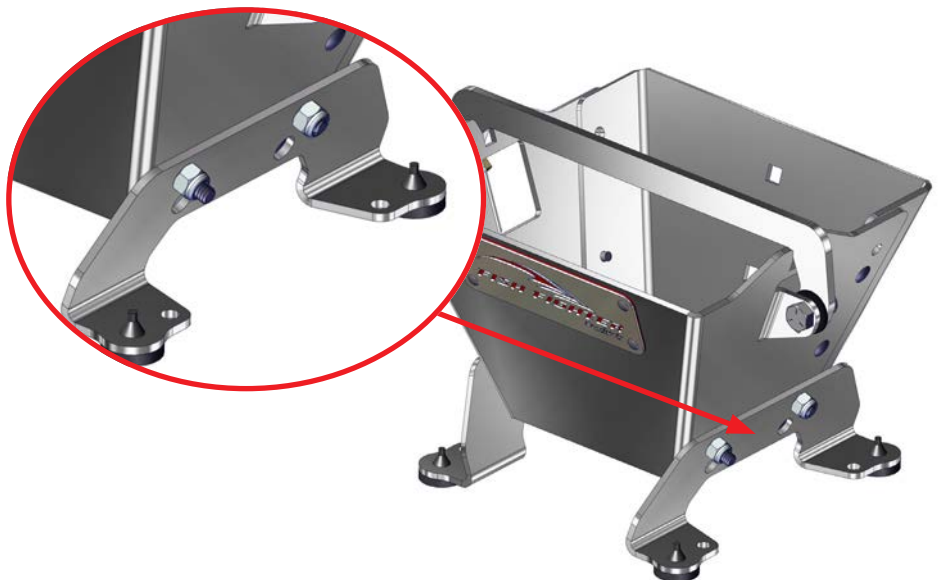
1. Arrange floor mount legs and Drift Boat Anchor Nest. The Floor mount legs will attach to the two mount holes at the bottom of the nest.



2. Align the holes on the floor mount legs with the mounting holes on the nest.

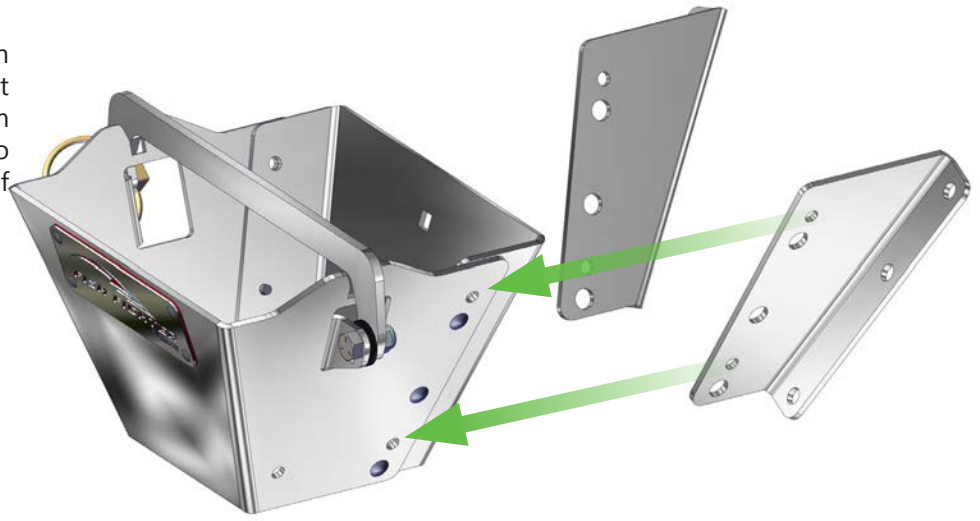


3. Install using (2) ¼" Cap Screw and (2) Nylock Nuts per side.



Drift Boat Anchor Nests Assembly (60° Transom)

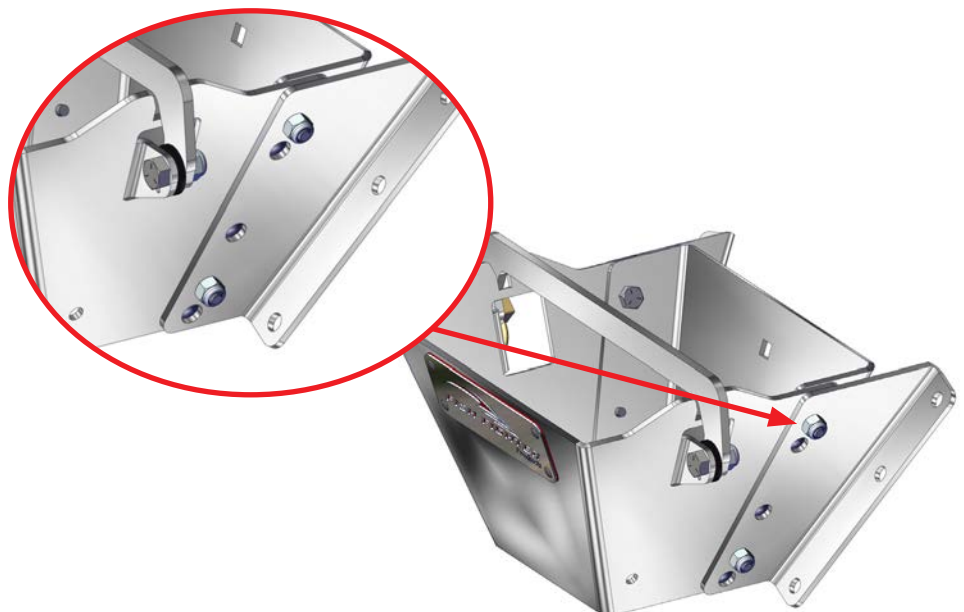
1. Arrange 60° Transom mounting plates and Drift Boat Anchor Nest. The 60° Transom mounting plates will attach to the two back holes at the back of the nest.



2. Align the holes on the 60° Transom mounting plates with the mounting holes on the nest.

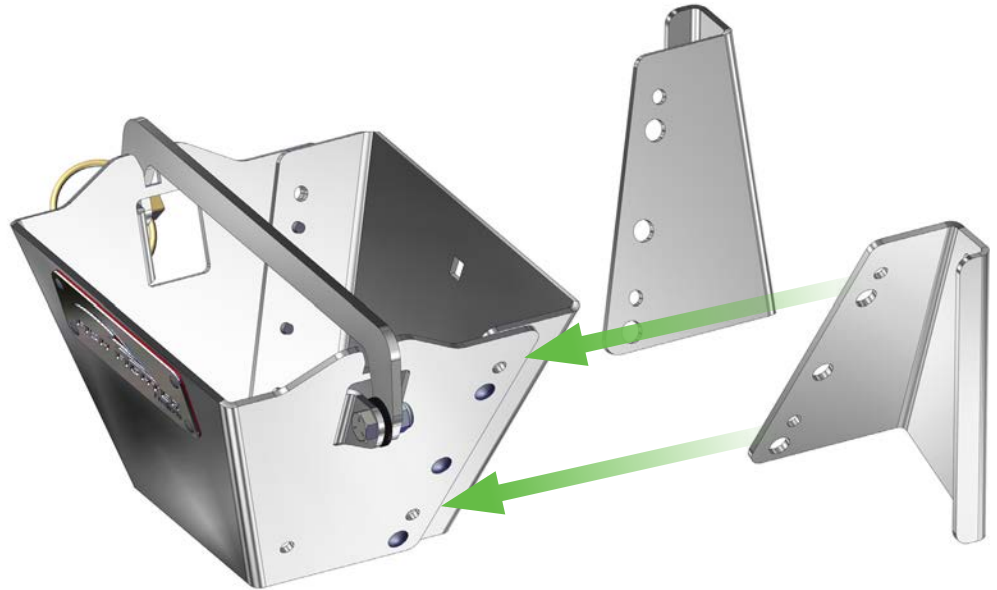


3. Install using (2) ¼" Cap Screw and (2) Nylock Nuts per side.



Drift Boat Anchor Nests Assembly (90° Transom)

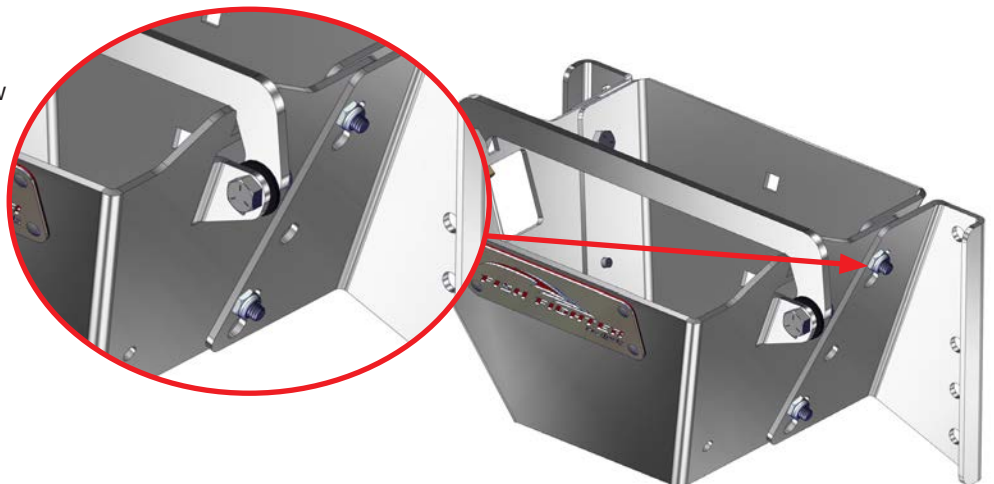
1. Arrange 90° Transom mounting plates and Drift Boat Anchor Nest. The 90° Transom mounting plates will attach to the two back holes at the back of the nest.



2. Align the holes on the 90° Transom mounting plates with the mounting holes on the nest.



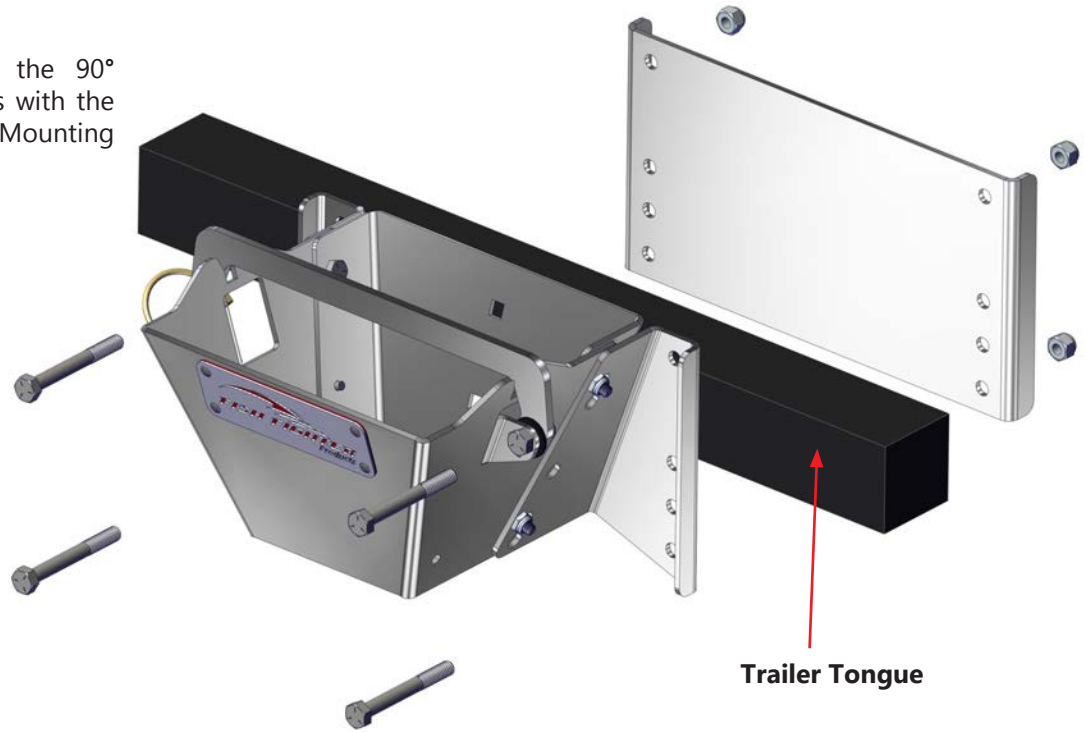
3. Install using (2) ¼" Cap Screw and (2) Nylock Nuts per side.



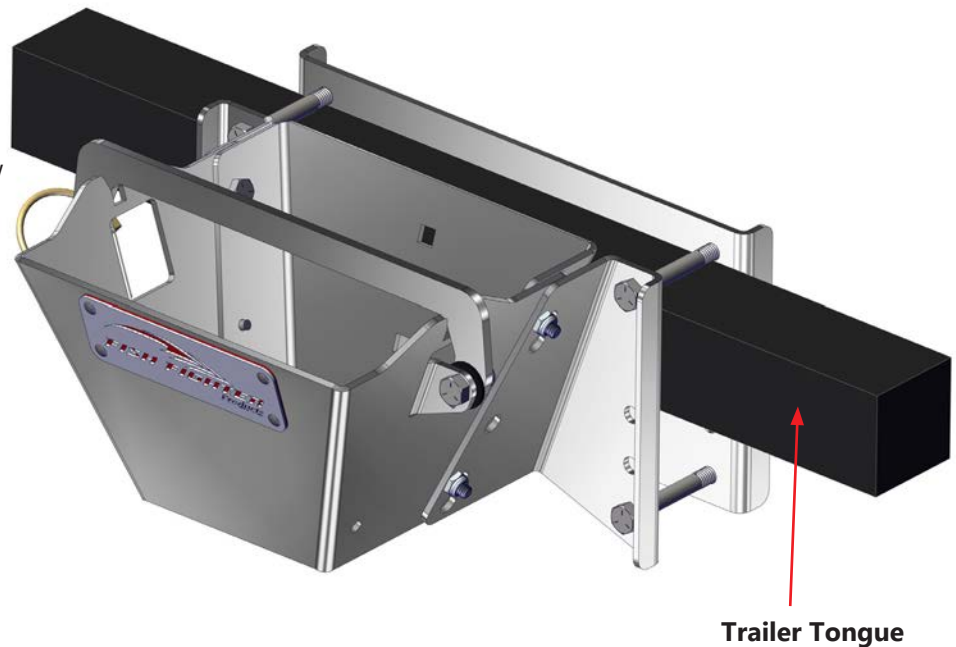
Drift Boat Anchor Nests Assembly (Trailer Mount)

1. Install 90° Transom Mounting plates as described on Pg. 10.

2. Align the holes on the 90° Transom mounting plates with the mounting holes Trailer Mounting back plate



3. Install using (4) 5/16" Cap Screw and (4) Nylock Nuts per side.



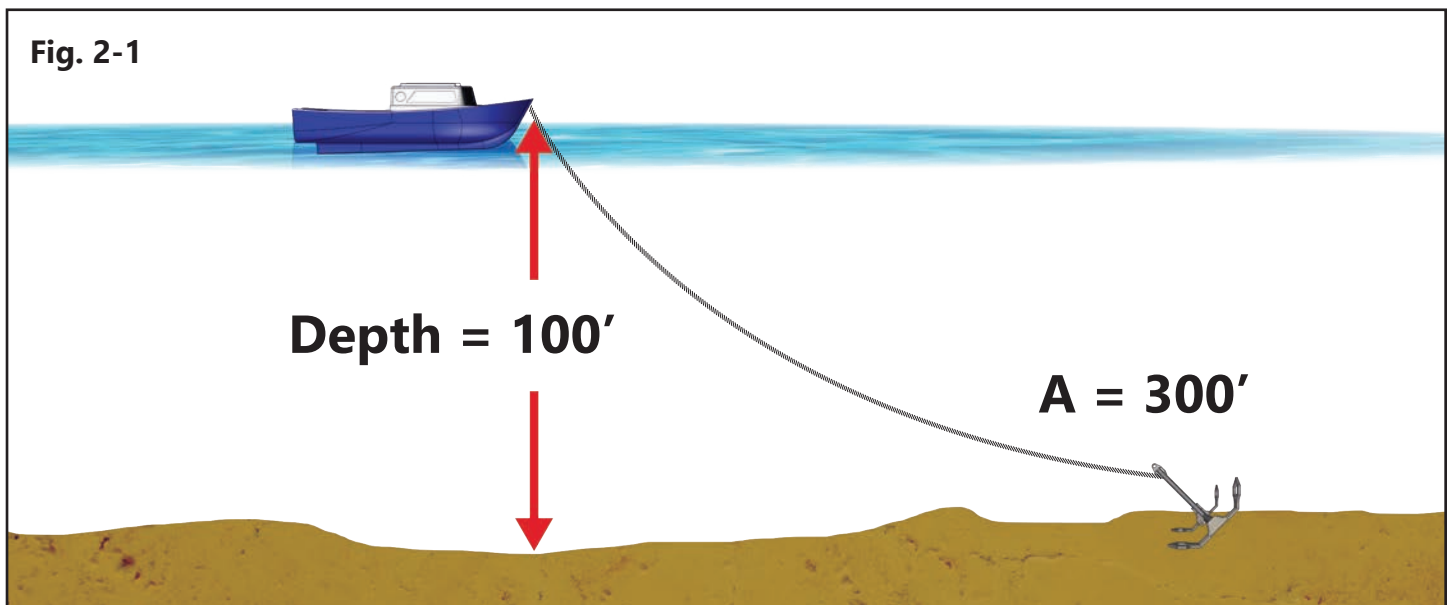
THE DANGERS OF ANCHORING

Each year boats capsize because of failure to follow proper anchoring guidelines.

- Please Read And Understand This Manual Completely.
- Understand This Manual Is Just A Guideline Is Not A Substitution For Hands On Training By Your Local Coast Guard Or Water Ways Department.
- Always Wear A Proper Fitting Life Jacket
- Never Anchor In Swift Water
- Use Extreme Caution When Anchoring And Always Be In Communication With Boats Captain.
- Use Caution When Setting Or Retrieving Your Anchor "Wear A Life Jacket"
- Use Quick Release Methods For Securing Anchor Lines To Your Boat.
- Keep A Sharp Knife Handy In The Event You Must Cut The Anchor Line In An Emergency.
- When Pulling Up Your Anchor, Be Sure To Keep Anchor Rope Out Of Boat Motor.
- Use The Correct Amount Of Anchor Rope Minimum Of 3 To 1 Scope 4-5 To 1 Recommended.

UNDERSTANDING SCOPE

Scope is the ratio of the length of deployed anchor rope to the height of the bow chock above the seabed. The greater the scope the more horizontal the pull on the anchor, and the better it will hold. FFP recommends that you take into account fluctuating river levels and give enough slack in your rope to compensate. (Min of 3:1 scope – recommended 4-5:1 scope) See Fig. 2-1 showing a 3:1 scope.



DROPPING ANCHOR

1. Understand anchoring scope and river current (See pg 12 Fig 2-1)

2. Select a position you wish to be anchored

3. Take your boat upstream or upwind from the position that you have selected. Be sure to take into account the amount of scope you will need. Example in slow river currents a 3 to 1 scope may be ok. If water is 50ft deep you would want to have at least 150ft of rope let out so you must pull at least 150ft forward of your desired anchor position. If the current is moderate we recommend a minimum of 4 to 1 scope so you would need to pull at least 200ft ahead of desired anchored boat position. (Fig 3-1)

WARNING



Do not anchor in swift currents except in emergency situations.

4. From the bow of your boat, slowly lower your anchor to the bottom. Make sure the boat captain is watching and holding the boat in the correct position. Measure how much rope length it takes for the anchor to reach the bottom. This will determine how much scope you will need on the rope in the event you do not have a depth finder.

WARNING



It is highly recommended that all passengers wear a life persevering safety jacket while aboard any operating water vessel. It only takes one mistake to end a life.

5. With the boat under power, slowly back the boat down current or downwind, slowly letting out your anchor rope. (Fig 3-2)

6. Back the boat to within 20ft of your desired anchored position. Attach your buoy to the anchor rope and let it feed into the water. (Fig 3-3)

7. Back the boat into your final position. Tie off your line using a quick release anchor knot to an anchor cleat at the bow of the boat. Keep a sharp knife close to the anchor line in case of emergency and you must cut your anchor line free. (Fig 3-4)

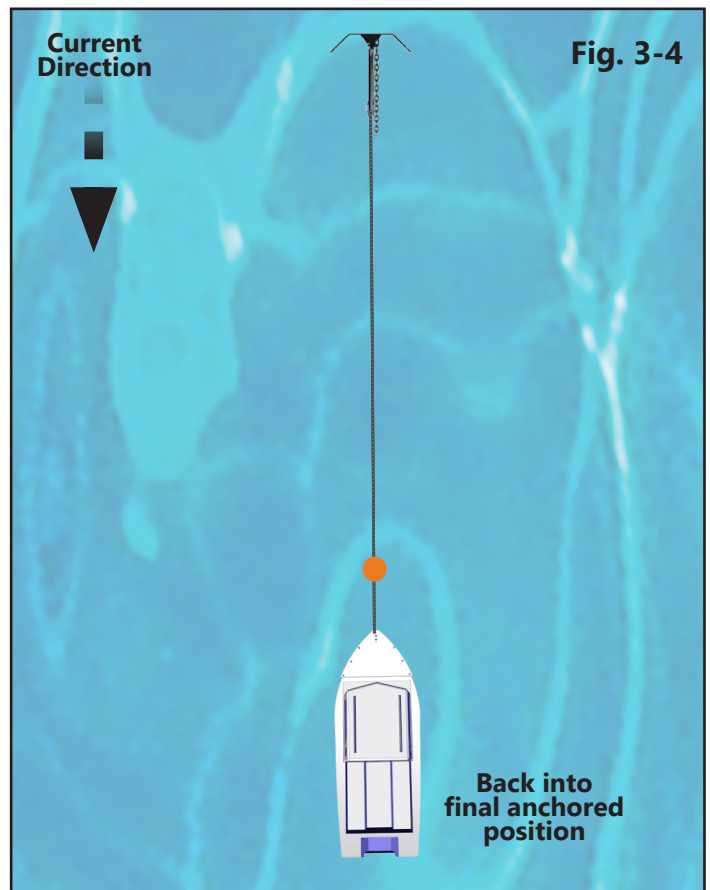
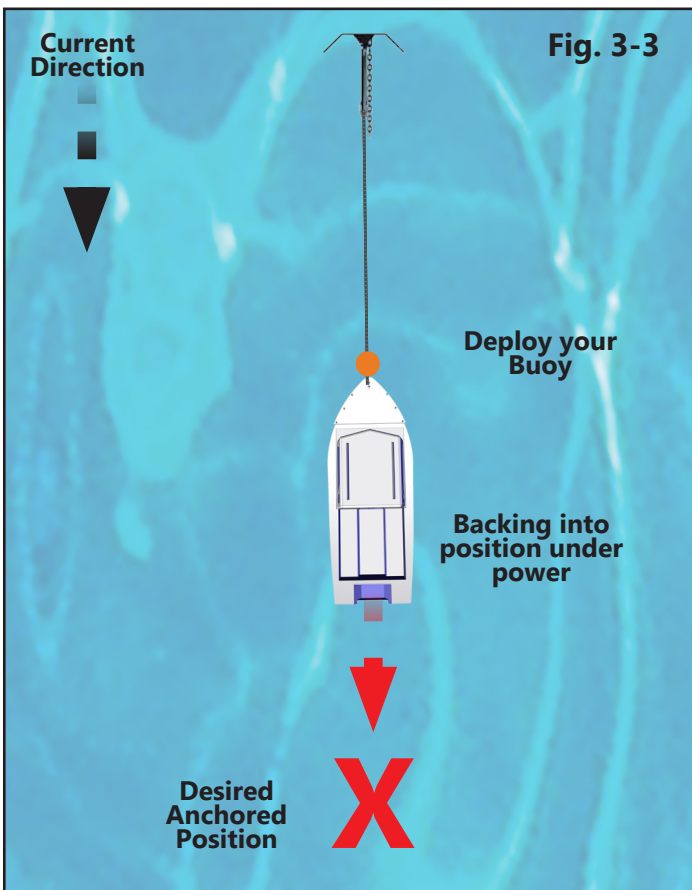
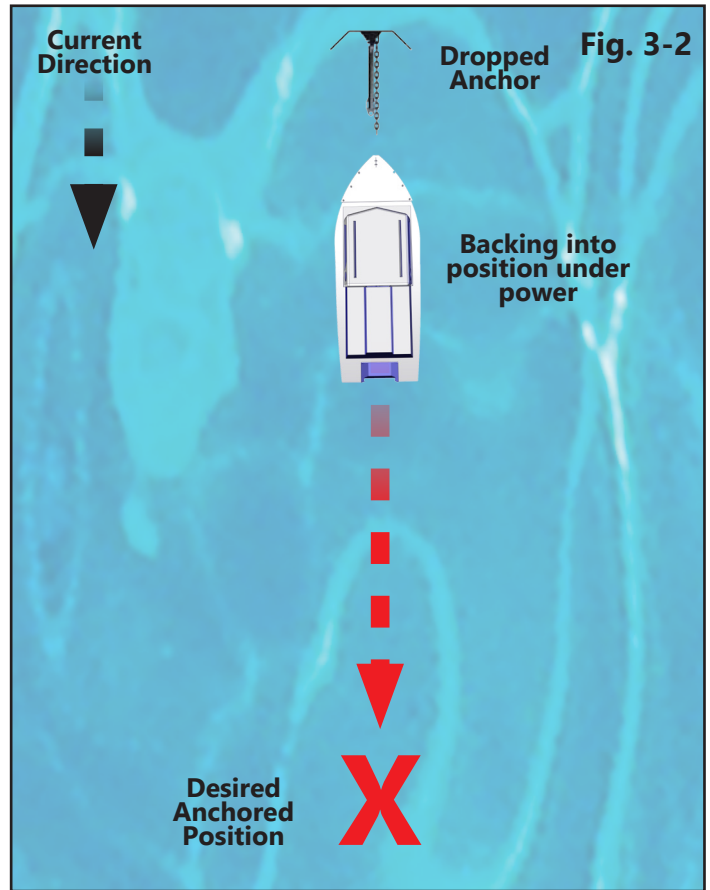
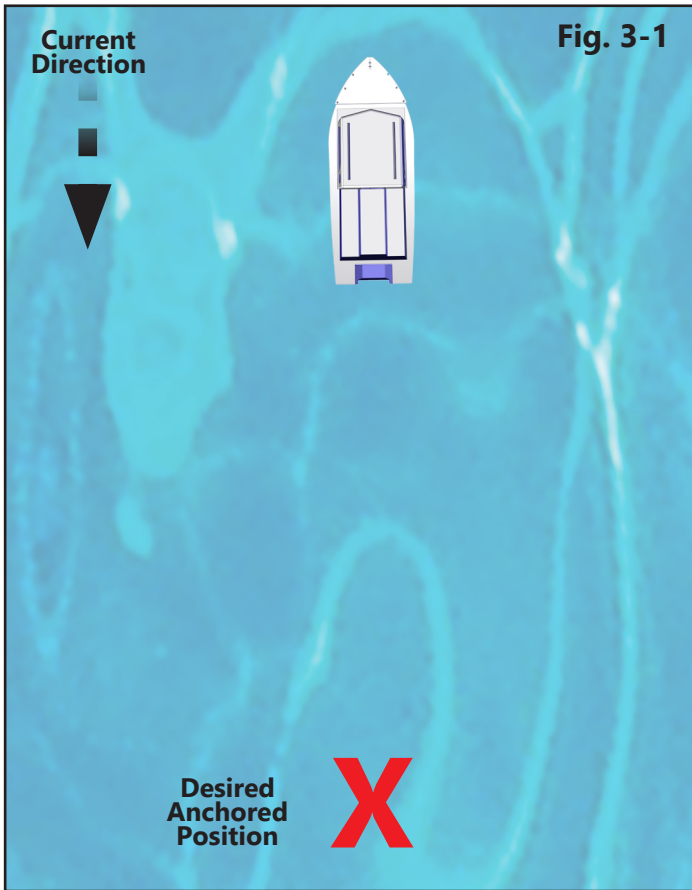
WARNING



Never anchor from the stern of the boat. Anchoring from the stern can cause the boat to flood with water and sink!



Practice tying a quick release knot before heading onto the water.



USING DRIFT BOAT ANCHORS

1. Use best judgment in determining the water current speed. Adjust your drift boat anchor weight based on water current to obtain the your desired drift speed.

2. Use a quick release method to release the anchor rope in the event the anchor becomes stuck. Do Not Tie your Anchor Rope Hard and fast to your boat, use only quick release methods.

If an **EMERGENCY SITUATION OCCURS YOU WILL NEED TO BE ABLE TO QUICKLY RELEASE ANCHOR ROPE.**

See **Figs 1-3, PG. 3** To see how to use FFP Adjustable Weight Plates.

WARNING



Anchoring from a drift boat can be very dangerous. Please use caution when anchoring, be sure to only anchor from the stern of the boat. Never anchor a drift boat in deep or swift waters.

