

Power Button

- Press to dim JCU II display
- Press and hold to wake camera or enter power menu

SCENE Button - IR

- Press to change scene settings

Manual Focus Buttons

- + Focus farther away
- Focus closer

COLOR Button - IR

- Press to change palette
- Press and hold to change polarity

Joystick**To Manage Camera**

- Twist to zoom camera
- Push fore/aft to tilt camera
- Push left or right to rotate camera

To Navigate On-Screen Menus

- Push left/right/up/down to highlight menu item
- Push right joystick button to select menu item
- Push left/right to change numeric value
- Push right joystick button to toggle switch
- Push left joystick button to exit current menu item

To Navigate JCU LCD Menu

- Push fore/aft to scroll up/down
- Push left joystick button to select menu item

MENU Button

- Press to enable on-screen menu
- Press to exit menu

LCD Display

- Displays JCU info and power menu options
- Use joystick to interact

HOME Button

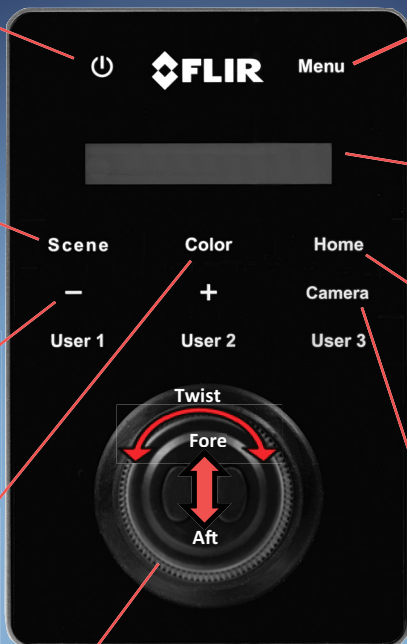
- Press to return to home position
- Press and hold until home icon flashes to store new home

CAMERA Button

- Press to select active camera

View IP Address

- Press and hold COLOR button while pushing joystick forward
- IP address of the JCU II and then the camera will be shown on the LCD display

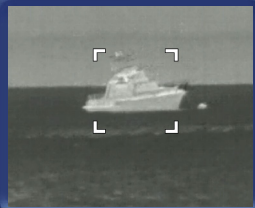


M400XR

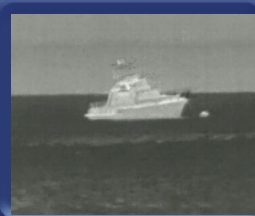


Quick Start Guide

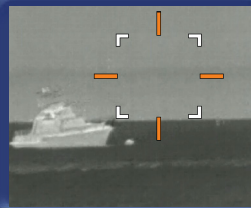
Video Tracking



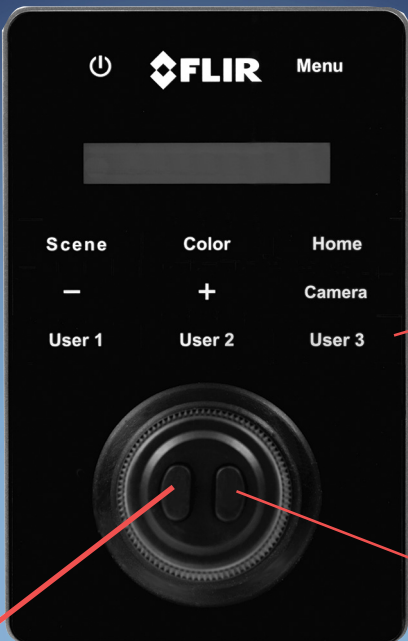
Acquisition



Tracking



Coasting



Default User Buttons

- User 1 - Autofocus
- User 2 - H-V Stab
- User 3 - Spotlight

Enable Video Tracking

- Press right button
- Use joystick to center target in gate
- Press right button, to engage tracking

Video Tracking

- Press left button, to disengage tracking and exit tracking mode