



FLOJET

a xylem brand

Duplex II
Industrial Series
 Low Pressure (30 to 60 PSI)
 High Pressure (70 to 100 PSI)

Duplex II Industrial Series

INSTALLATION GUIDE

Description

FLOJET Industrial Duplex II Pumps are designed for a wide range of applications and are constructed from a selection of materials suitable for handling a broad range of chemicals. The Duplex II series of diaphragm pumps are self-priming and can be run dry without harm. They are intended for intermittent duty cycles but can be run continuously for short periods of time. The higher the duty cycle the shorter the expected life of the pump.

Typical pump uses are liquid transfer, spraying, cooling, circulation, filtration and dispensing.

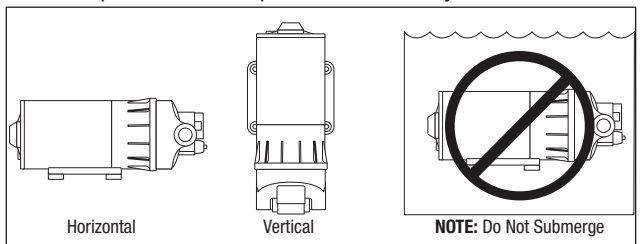
⚠ CAUTION (115 Volt AC) UL recognition is based on testing using water

Mounting **⚠ CAUTION**

The FLOJET Duplex II Series pumps are self-priming. Vertical prime may vary depending on the fluid viscosity, suction tube size, foot valve and pump configuration. The pump should be mounted in a dry and adequately ventilated area. If mounted within an enclosure, provisions to cool the motor may be necessary.

⚠ CAUTION If mounting the pump in an outdoor environment the pump should be shielded from water, dust, sunlight and wash down spray.

Do not assume chemical compatibility. If the fluid is improperly matched to the pumps Elastomers, the pump may fail to prime, have low pressures or the pressure switch may not shut off.



Plumbing

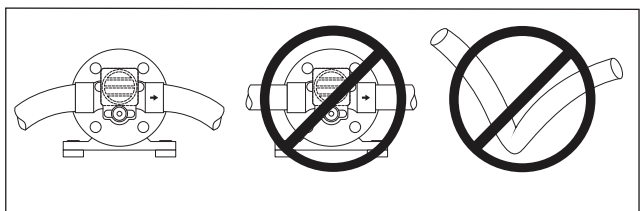
Use flexible hose of the correct pressure rating that is compatible with the fluid to be pumped. Tubing should be a minimum of 3/8" (9.5 mm) ID and at least 20 inches (508 mm) in length to avoid excess stress on the pump ports. Do not crimp or kink the tubing. The pump head maybe rotated in 90° increments to simplify plumbing.

⚠ CAUTION Do not use of metal fittings, standard plastic male and female threaded fittings can be acquired at commercial plumbing supply stores. FLOJET also distributes plastic barb fittings through our distributors (form no. F100-001).

⚠ CAUTION The use of check valves in the plumbing system could interfere with the priming ability of the pump. If a check valve is installed in the plumbing it must have a cracking pressure of no more than 2 PSI (.14 bar).

⚠ CAUTION Use of a minimum 40-mesh strainer or filter in the pump inlet line will prevent foreign debris from entering the system. Failures due to foreign debris entering the pump will not be covered under the limited warranty.

Note: Inlet pressure must not exceed 30-PSI (2.1 bar) maximum.



FLOJET
 a xylem brand

Electrical



WARNING

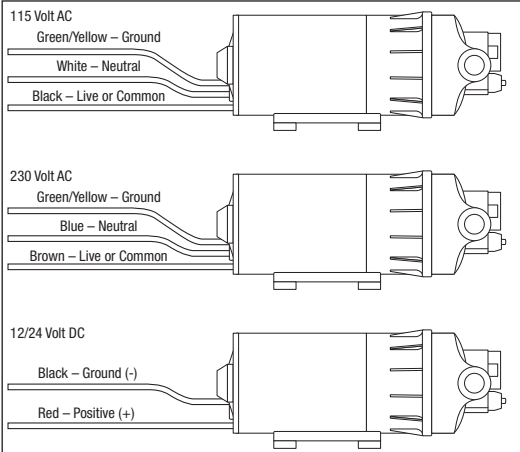


Risk of an electrical shock!

When wiring electrically driven pumps, follow all electrical and safety codes, as well as the most recent National Electrical Code (NEC) and the Occupational Safety and Health Act (OSHA).

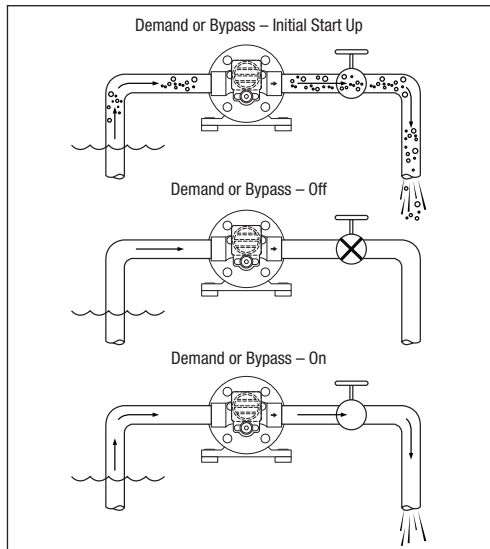
Make certain the power source conforms to the pump voltage. Be sure all power is disconnected before installation.

The pump should be wired into an individual (dedicated) circuit, controlled with an UL/C-UL certified double pole switch rated at or above the fuse ampere indicated on the pump motor label.



Operation

To start and prime the pump, the discharge line must be open allowing trapped air to escape thus avoiding the potential of airlock. The pressure switch will shut off the pump automatically when the discharge valve is closed and the pressure has risen to the switch OFF set point. The pressure switch will restart the pump when a valve is opened and the discharge line pressure drops to the ON set point of the pressure switch.

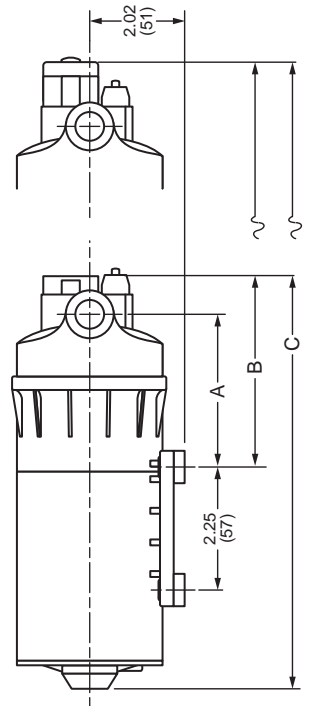
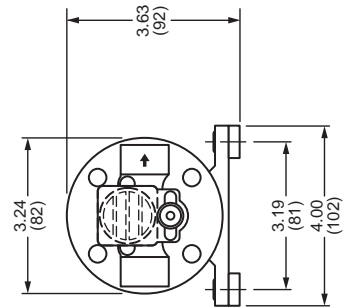


WARNING



DO NOT USE TO PUMP FLAMMABLE FLUIDS, GASOLINE, KEROSENE FUEL OIL, ETC. DO NOT USE PUMP IN A EXPLOSIVE ENVIRONMENT

DEMAND PUMP	A	B	C
Minimum Dimension	2.53 (64)	3.98 (101)	8.00 (203)
Maximum Dimension	2.79 (71)	4.79 (122)	8.61 (219)
BY PASS PUMP			
Minimum Dimension	2.53 (64)	3.25 (83)	7.27 (185)
Maximum Dimension	2.79 (71)	3.51 (89)	7.73 (196)



Dimensional Drawing – Low Pressure Model

Inches (Millimeters)

Dimensional tolerances

± 0.06 inches

Consult factory if precise details are required.