

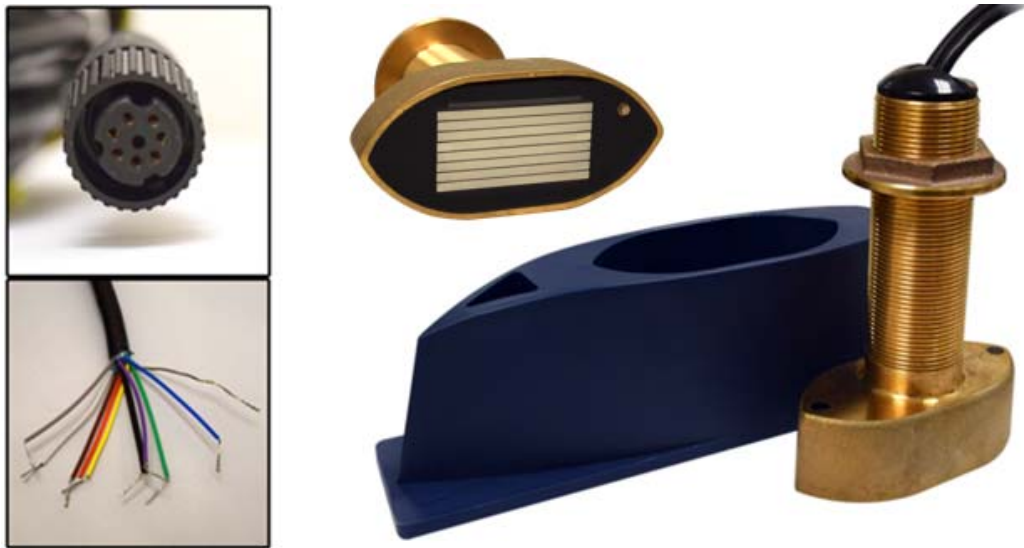
DFF3D Transducer Guide

Single Frequency (DFF3D only) Transducers

These transducers have specific DFF3D elements. They are only for use with the DFF3D Multi-Beam Sonar. Four transducers fall into this category: A bronze thru-hull, a stainless thru-hull, a pocket or keel mount and a transom mount.

165T-B54 Bronze Thru-Hull Multi-beam Transducer

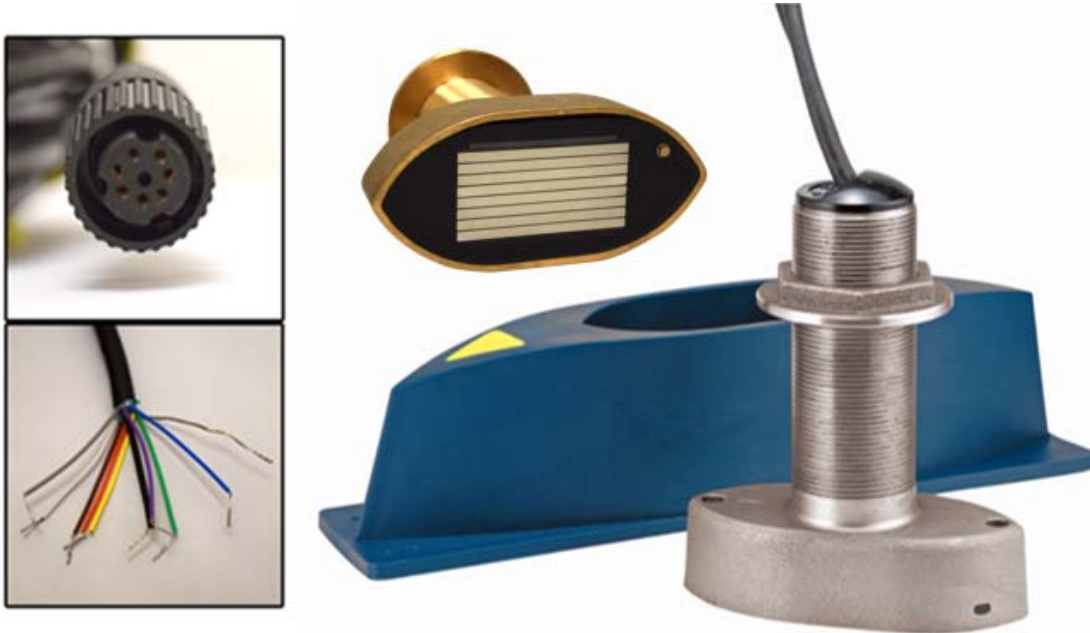
The 165T-B54 is a multi-beam transducer for the DFF3D that affords a 120 degree port-starboard view of the underwater world. A built-in motion sensor stabilizes the display to give clear and stable images.



Standard Features

- Bronze Thru Hull with high speed fairing block. Can be flush mounted in keel without using fairing block
- DFF3D Elements 165khz
- 10M Cables with 7pin connector and pigtail cable
- Compact design
- Built-in motion sensor
- Built in temp sensor

165T-SS54 Stainless Thru-Hull Multi-beam Transducer

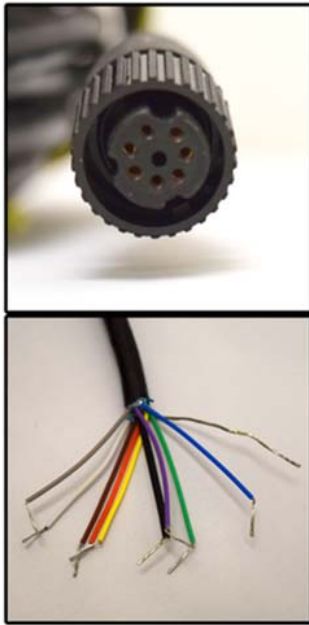


Standard Features

- Stainless Thru Hull with high speed fairing block. Can be flush mounted in keel without using fairing block
- DFF3D Elements 165khz
- 10M Cables with 7pin connector and pigtail cable
- Compact design
- Built-in motion sensor
- Built in temp sensor

165T-TM54 Transom Mount Multi-beam Transducer

The 165T-TM54 is a multi-beam transducer for the DFF3D that affords a 120 degree port-starboard view of the underwater world. A built-in motion sensor stabilizes the display to give clear and stable images.

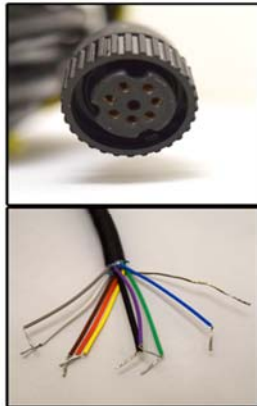


Standard Features

- DFF3D Elements 165khz
- Transom mount with stainless steel kick-up bracket
- 10M Cables with 7pin connector and pigtail cable
- Built-in motion sensor
- Built in temp sensor

165T-CM54 Pocket or Keel Mount Multi-beam Transducer

The 165T-CM54 is a multi-beam transducer for the DFF3D that affords a 120° port-starboard view of the underwater world. A built-in motion sensor stabilizes the display to give clear and stable images. It can be keel or pocket mounted.



Standard Features

- DFF3D Elements 165khz
- Designed for keel or pocket mounts
- 10M Cables with 7pin connector and pigtail cable
- Built-in motion sensor
- Built in temp sensor

Combination Transducers

These transducers have the DFF3D elements along with either the B265 L/H CHIRP, B275 L/H CHIRP wide elements or the B164 50/200 kHz elements, and temp. They can be connected to the DFF3D Multi-Beam Sonar along with one sounder. These transducers save money and space compared to purchasing and installing two separate transducers.



165T-50/200-SS260 DFF3D 50/200 Stainless Combination Thru-Hull



Standard Features

- Stainless Thru Hull with high speed fairing block. Can be flush mounted in keel without using fairing block
- DFF3D Elements (165khz)
- Built-in motion sensor
- 1kW, 50/200 kHz, 20/6 ° beam angles for sounder elements. Same elements as an Airmar B164 transducer.
- 12M Cables with 10-Pin Connector for sounder, 7 pin connector and a pigtail cable for the DFF3D
- Recommended for a TZtouch2 or a TZtouch/DFF1/BBDS1 and DFF3D installation
- Built in temp sensor

165T/265LH-PM488 DFF3D/CHIRP Combination Pocket Mount

This is a new size housing (12 LX 5 W X 3.5 H) that contains the DFF3D elements along with the same CHIRP elements contained in B265LH

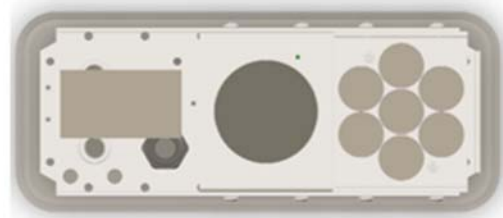


Standard Features

- DFF3D Elements (165kHz)
- Low—CHIRPS from 42 kHz to 65 kHz, Beamwidth 25° to 16°
- High—CHIRPS from 130 kHz to 210 kHz, Beamwidth 10° to 6°
- Bottom discrimination and Accu-fish compatible (without TID)
- 12M Cables. Pigtail cable for DFF1-UHD, 7 pin connector and a pigtail cable for the DFF3D
- Recommended for a DFF1-UHD and DFF3D installation
- Built-in motion sensor
- Built in temp sensor

165T/275LH-PM488 DFF3D/CHIRP Combination Pocket Mount

This is a new size housing (12 LX 5 W X 3.5 H) that contains the DFF3D elements along with the same CHIRP elements contained in B275LHW



CM488 housing
DFF3D array
1 kW B265LH



Standard Features

- DFF3D Elements (165kHz)
- Low—CHIRPS from 42 kHz to 65 kHz, Beamwidth 25° to 16°
- High—CHIRPS from 150 kHz to 250 kHz, Beamwidth 25°
- 12M Cables. Pigtail cable for DFF1-UHD, 7pin connector and a pigtail cable for the DFF3D
- Recommended for a DFF1-UHD and DFF3D installation
- Built-in motion sensor
- Built in temp sensor

165T-50/200-TM260 DFF3D 50/200 Combination Transom Mount



TM260 housing
DFF3D array
1 kW B164 50/200 kHz array



Standard Features

- DFF3D Elements (165kHz)
- 1kW, 50/200 kHz, 20/6 ° beam angles for sounder elements. Same as an Airmar B164 transducer.
- 12M Cables with 10pin connector for sounder, 7 pin connector for the motions sensor and pigtail cable for the DFF3D elements
- Recommended for a TZtouch2 or a TZtouch/DFF1, and DFF3D installation
- Built-in motion sensor
- Built in temp sensor

[View other marine electronics and navigation made by Furuno on our website.](#)