



MODEL 1835/1935/1945

The purpose of this guide is to provide the basic operation for this equipment. For more detailed information, see the Operator's manual.

All brand and product names are trademarks, registered trademarks or service marks of their respective holders.

The numbers in circles (1 to 5) show the sequence to operate the controls to start the radar.

How to off-center the display

Manual mode



Move the cursor to the position required.



Off-center on.



Off-center off.

How to adjust the gain, reduce sea/rain clutter

4



Rotate.



Gain/Sea/Rain			
GAIN MAN	(0~100)	0	<input type="text"/>
SEA MAN	(0~100)	0	<input type="text"/>
RAIN MAN	(0~100)	0	<input type="text"/>
[CANCEL/HL OFF]: Close			

- GAIN** : Adjust the sensitivity of the radar screen.
- A/C SEA** : Reduce the sea clutter.
- A/C RAIN** : Reduce the rain clutter.

How to activate a function key

F1

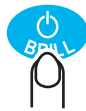


Press.

To activate a function, press **F1**, **F2** or **F3**. Press same key to change the setting.

How to turn on/off the power

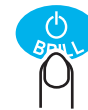
1



ON: Short press
OFF: Long press

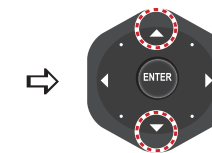
How to adjust the brilliance

2



Short press

Brill/Panel		◀ Min	Max ▶
Brill	(1~16)	16	<input type="text"/>
Panel	(1~8)	8	<input type="text"/>
[ENTER/↑/↓]: Select [CANCEL/HL OFF]: Close			



Select [Brill] or [Panel].



Adjust the setting.



- Hide the heading line and all marks while pressing.
- Cancel last entry in menu operation.



- Select the menu items and options.
- Move the cursor with the arrow or diagonal dot.



Save selected menu option.

How to select the radar range

5



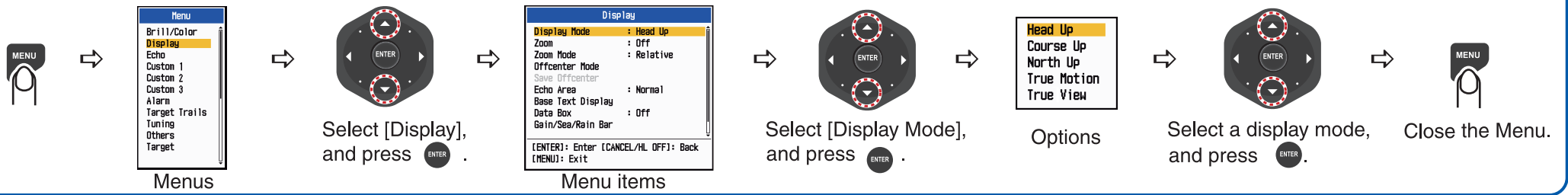
- +: Increase the range.
- : Decrease the range.

3

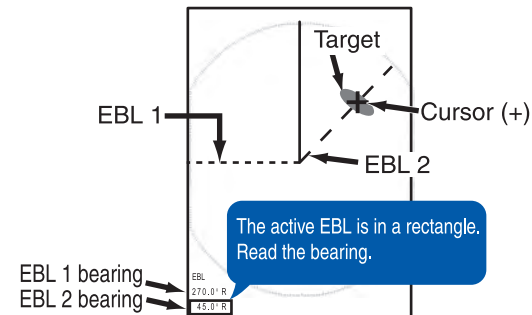
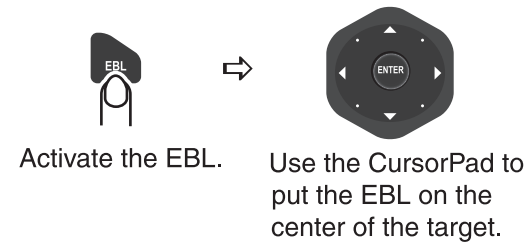


Transmit the radar pulses and put the radar in stand-by alternately.

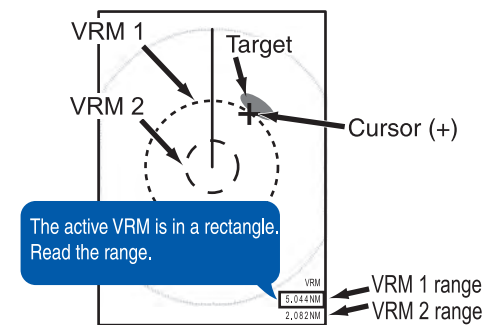
How to select a display mode



How to measure the bearing to a target



How to measure the range to a target



How to plot the radar echo movement

Start trails



Press several times to set the trail time.

Stop trails



Press several times until the trail indications disappear.

Trail indications are shown at the upper-right corner of the display.

TRAIL (T)
15 S
Trail time

How to set the target alarm



Move the cursor to position A, and press **ENTER**.



Move the cursor to position B, and press **ENTER**.

