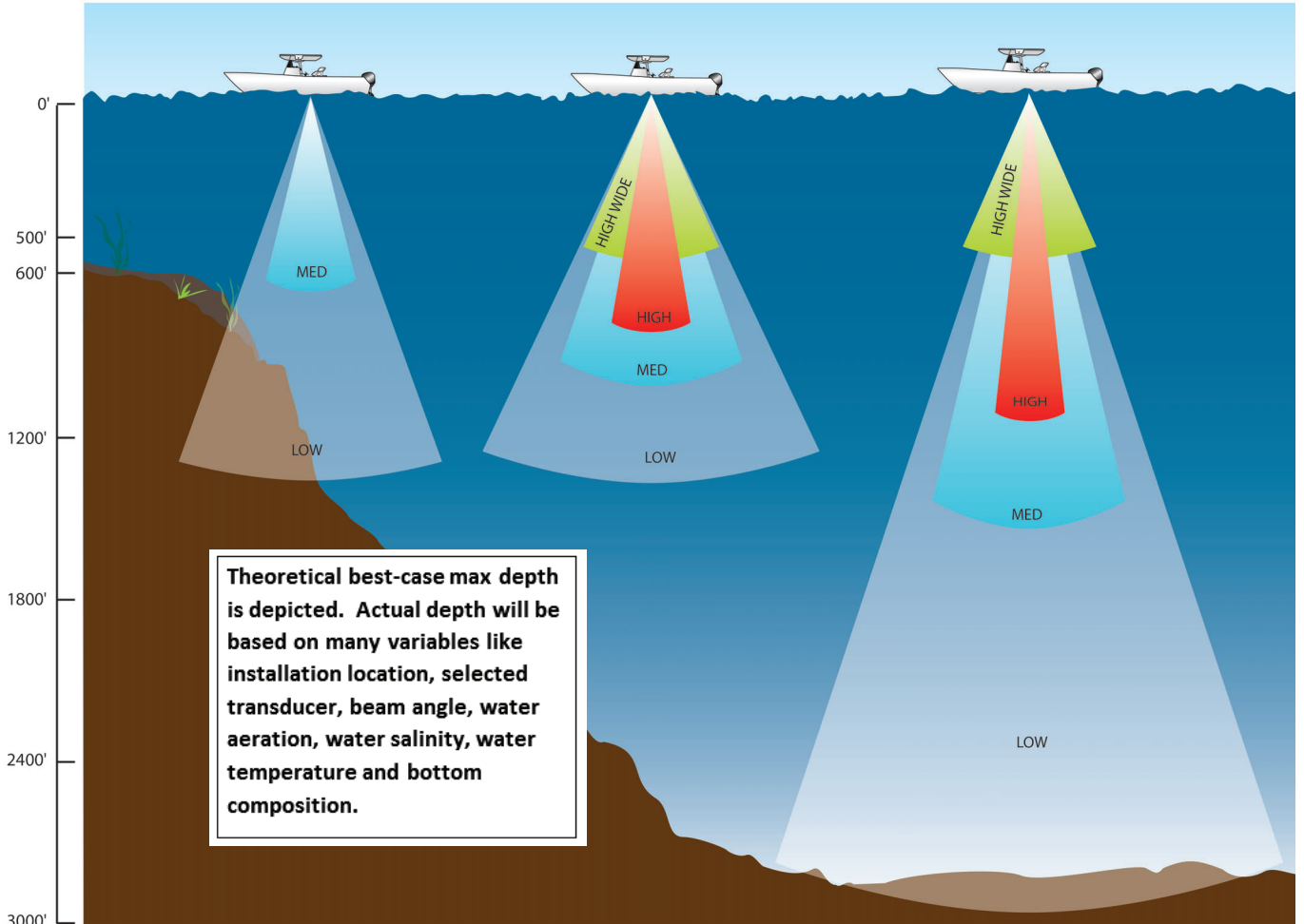


300 W Max depth 1200'

600 W Max depth 1200'

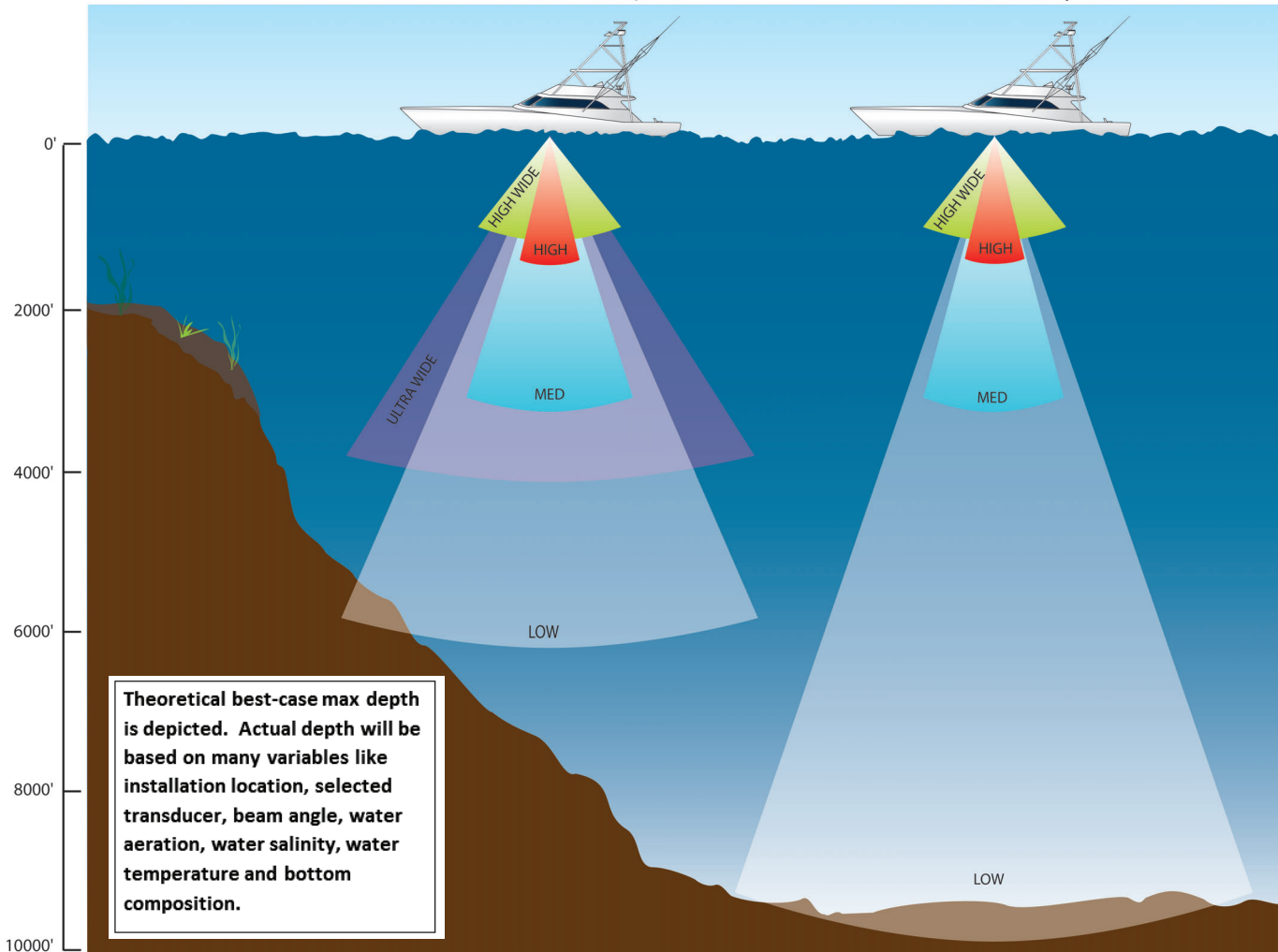
1 kW Max depth 3000'



**Theoretical best-case max depth is depicted. Actual depth will be based on many variables like installation location, selected transducer, beam angle, water aeration, water salinity, water temperature and bottom composition.**

2 kW Max depth 6000'

2-3 kW Max depth 10000'



Learn more about marine electronics and navigation on our website.