



MULTI FUNCTION DISPLAY



## MFD8/MFD12/MFDBB

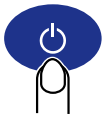


### Operator's Guide

The purpose of this Operator's Guide is to provide basic operating procedures for this equipment. For more detailed information see the Operator's Manual.

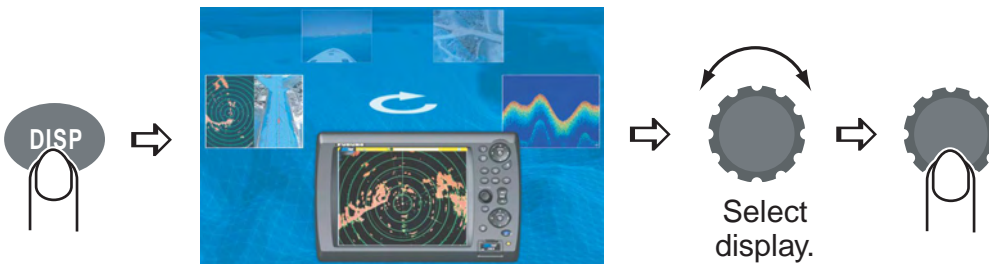
## General

### Power on/off



ON: Momentary push  
OFF: Long push (3 sec.)

### Selecting a display



### Selecting a range



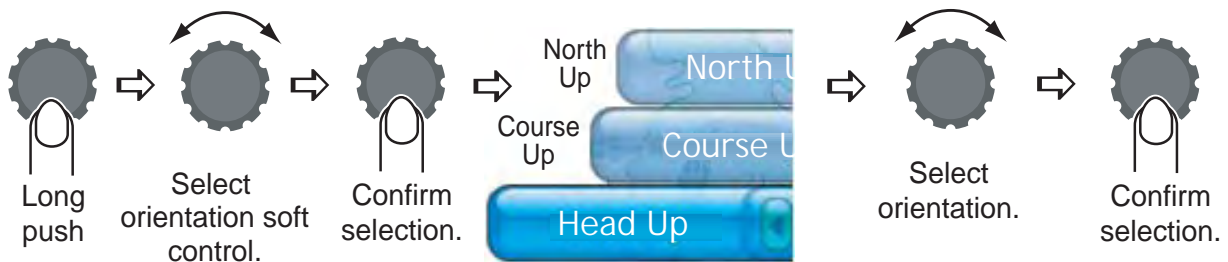
- Press **RANGE OUT** to increase the range.
- Press **RANGE IN** to decrease the range.

### Scrolling the chart, [radar](#) picture



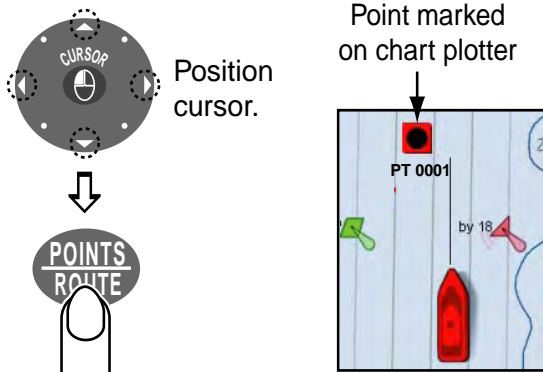
Press arrow or diagonal to scroll chart, radar picture. To re-center own ship, push **SHIP/3D** button.

### Chart, radar orientation

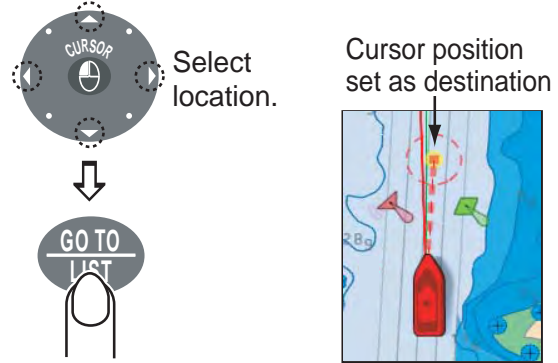


# Chart Plotter

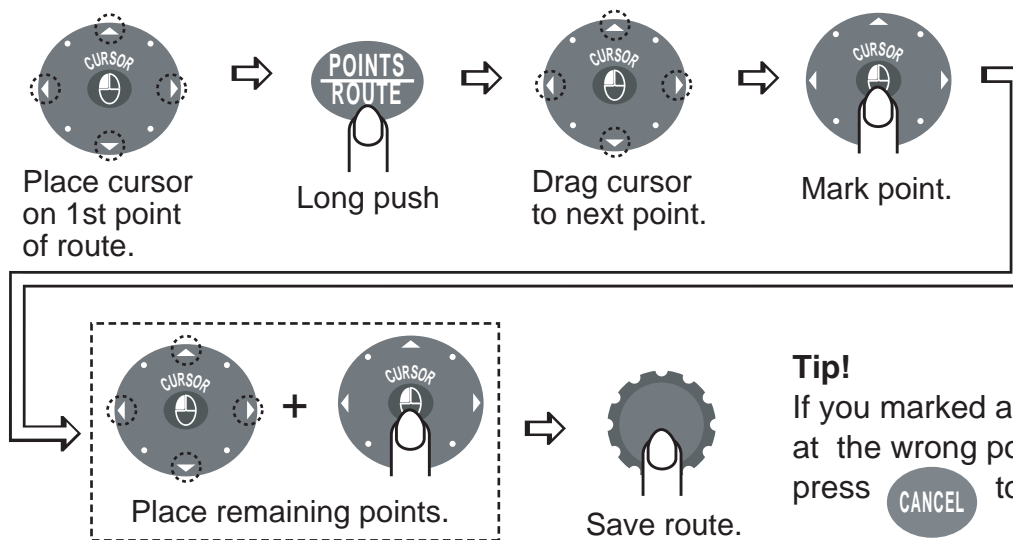
## Placing a point at cursor location



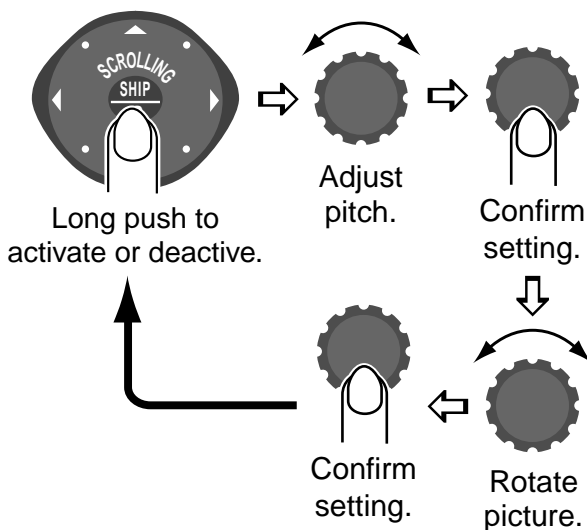
## Going to cursor position



## Creating a route



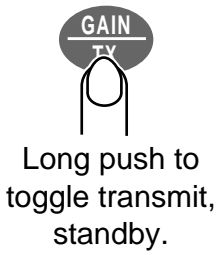
## 3D display



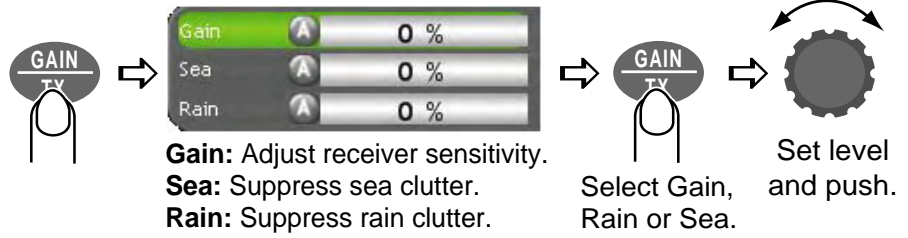
\* This procedure is available when 3D/Pan Tilt Mode in the Chart-General menu is active.

# Radar

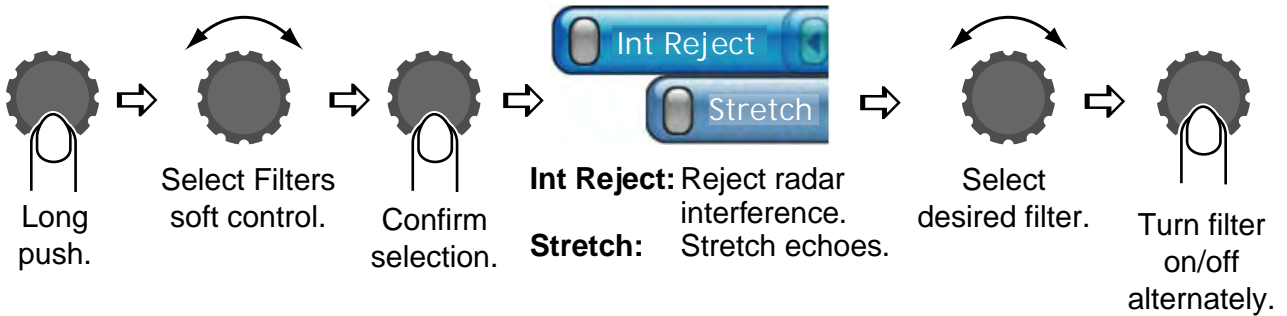
## Toggling TX, STBY



## Adjusting gain, and rain and sea clutters

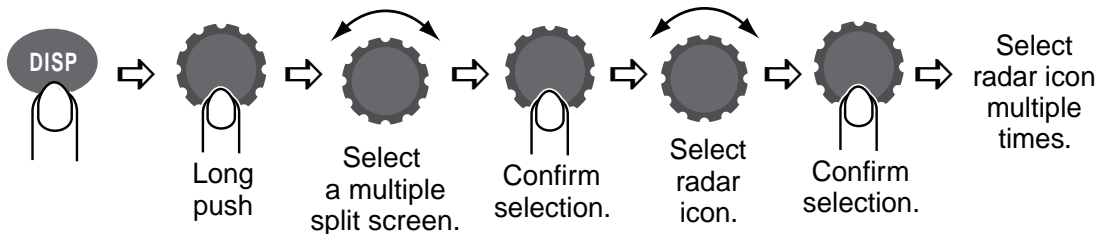


## Suppressing interference, stretching echoes



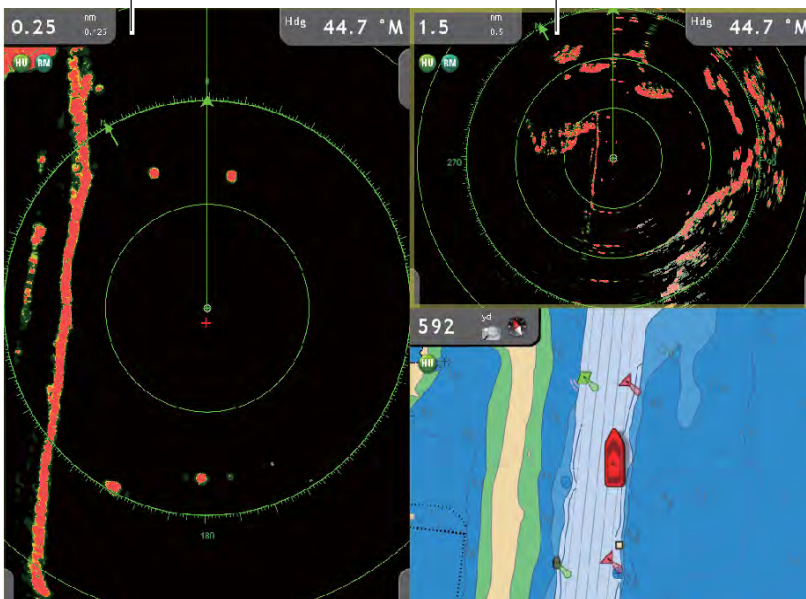
## Dual range display

The dual range display offers both short and long range pictures simultaneously.



Close-range display (0.25 nm)

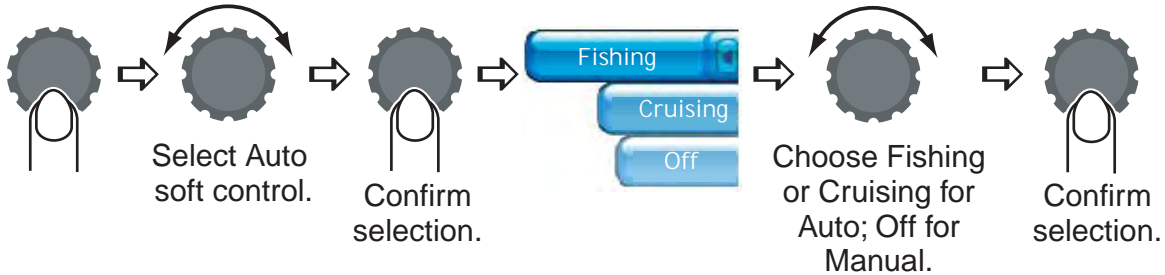
Longer range display (1.5 nm)



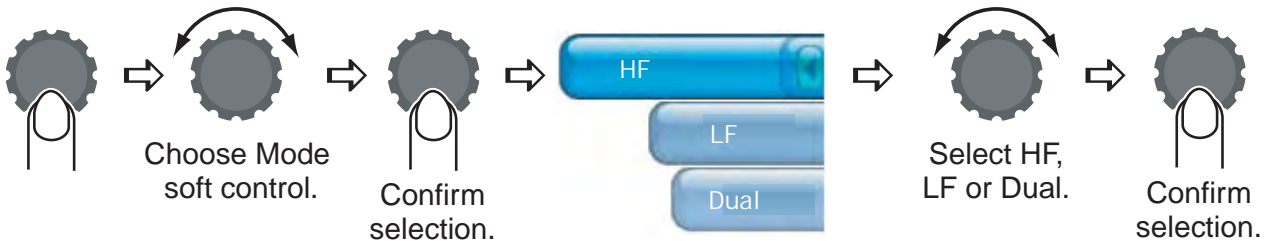
# Fish Finder

## Selecting operating mode

Your fish finder can be operated automatically or manually. In automatic operation, gain, clutter, TVG, echo offset and range\* are automatically adjusted. (\*: For ETR-6/10/30).



## Selecting operating frequency



## Picture advance speed, interference rejection

The picture advance speed determines how fast echoes are scrolled across the screen. Turn on the interference rejector when interference appears on the screen.

