

FURUNO

MARINE RADAR

Model

FAR-1513-BB/1523-BB

(12 kW)

(25 kW)



Photo: 15" Marine Display MU-150HD
(Optional supply)

Easy to use Marine Radar with advanced capabilities, at a great value

Model **FAR-1513-BB/1523-BB**
(12 kW) (25 kW)

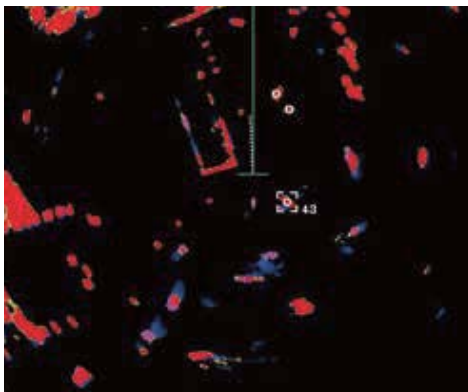


Photo: 15" Marine Display MU-150HD
(Optional supply)

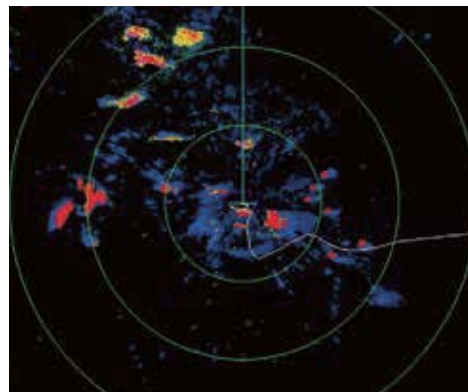
- ▶ FAR-1513-BB/1523-BB Marine Radar features advanced functionality in a small and easy to use package
- ▶ Accurately track other vessels with advanced Fast Target Tracking™ (TT) functionality
- ▶ Improved sea and rain clutter suppression function
- ▶ Improved user interface for simple and efficient operation
- ▶ Target Analyzer™ function for improved situational awareness

NEW Target Analyzer™ function

The Target Analyzer™ function displays moving targets, stationary targets, rain, sea surface and targets closing in on your vessel in different colors. Spot hazardous targets directly, simply by their color. Target Analyzer™ can improve situational awareness, hence increasing safety at sea.



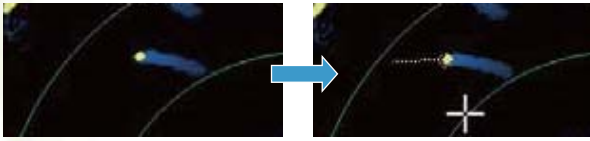
Moving targets are displayed in pink



Rain echoes are displayed in blue

NEW Fast Target Tracking™ (TT)

It only takes a few seconds after a target has been selected, for a speed and course vector to be displayed. With accurate tracking information, estimating other vessels course and speed is made easier.

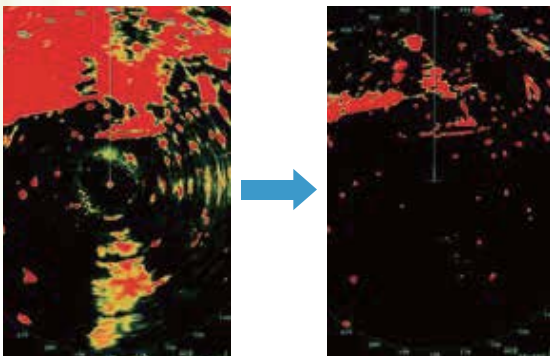


Before following target

After following target

ACE function suppresses false echoes

Quickly adjust the radar image with a single action. When Automatic Clutter Elimination (ACE) function is activated, the system automatically adjusts the clutter reduction filter and gain control according to the sea and weather conditions selected (Calm/Rough Sea/Hard Rain).



Automatic Clutter Elimination (ACE) OFF

Automatic Clutter Elimination (ACE) ON

Display Radar overlay on your connected GPS Chart Plotter

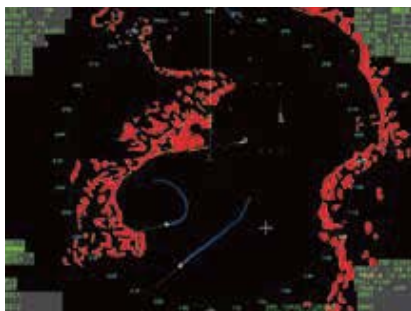
A supported GPS Chart Plotter is required.

AIS connectivity built-in

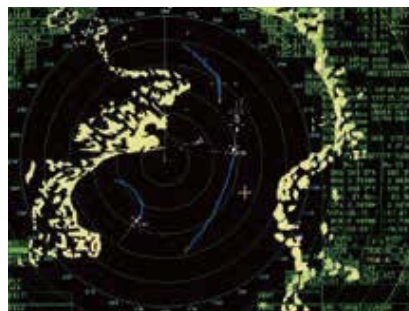
Connect a required AIS transponder to overlay AIS targets on the radar display. Up to 40 different targets can be tracked simultaneously.

Customize the display according to your needs

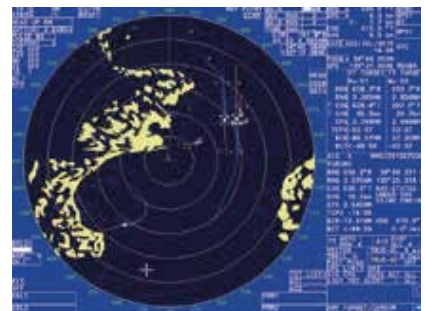
FAR-1513-BB/1523-BB offers impressive customizability and freedom when it comes to display. Choose how you want echoes to be displayed so that you can maximize visibility and efficiency.



Simple display, without range rings



All display, range rings and TT targets



Circle display

Compact easy to use control unit

Individual knobs for gain/rain/sea clutter suppression as well as RotoKey and a touch panel allow efficient, simple operation. An optional trackball unit as well as a regular USB mouse can also be used.



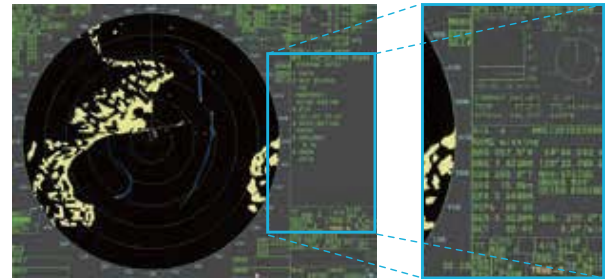
Control Unit



Optional Trackball Control Unit

Customizable data display for efficient and simple operation

Whether it be a close up window of approaching targets or target information, you can customize the display freely to show the information you need at hand.



Close up with AIS-information

High visibility MU-190 and MU-150HD Marine Display

19" LCD MU-190 and 15" LCD MU-150HD are available as optional supply to fit the needs of your unique vessel. A high brightness display ensures great visibility in the most difficult of conditions.

Scalable Ethernet Network System

The 100 Base-TX Ethernet is utilized to network two radar systems together without the need for extra devices. For convenience, you can control both radars from any of the connected displays.

