

**FURUNO**

Model

# FI-70

INSTRUMENT / DATA ORGANIZER





# All your info... All in one, for powerboats and sailboats alike

The new FI-70 INSTRUMENT/DATA ORGANIZER sports a vibrant 4.1" bonded color display that is visible even in the harshest sunlight conditions. Utilizing the CAN bus (NMEA2000) network, external sensors can easily be connected for simple and reliable operation. The FI-70 features an easy to operate graphical user-interface. It allows you to customize almost every display property, allowing you to choose the information you want to be displayed, in the way you want to see it!



- ▶ Clear 4.1" QVGA screen that is viewable even under direct sunlight
- ▶ Simple and intuitive graphical user interface allows you to fully customize
- ▶ Designed to perfectly match the NavNet TZtouch/TZtouch2 on your helm
- ▶ Bonded color LCD ensuring condensation free operation as well as great visibility
- ▶ Use your existing wind sensors (FI-5001/FI-5001L) with the new analog IF-NMEA1 converter
- ▶ Low power consumption (0.25 A max)
- ▶ Simple AIS display through connected CAN bus devices
- ▶ Share language and brilliance settings between FI-70s when grouping them together



Model **FI-70**  
INSTRUMENT/DATA ORGANIZER

## Simple setup for powerboats and sailboats alike

No matter if you own a powerboat or a sailboat, the FI-70 INSTRUMENT/DATA ORGANIZER will be equally useful with the proper sensors connected.

For maximum performance and simple setup, the FI-70 automatically asks you which type of vessel you have, helping to customize operation of the unit. With its low power consumption and easy installation, it's hard to imagine a vessel where the FI-70 wouldn't be a benefit.

## Display Data

<b>Speed</b>	STW (Speed Through Water), Max STW, Average STW, SOG (Speed Over Ground), Max SOG, Average SOG, VMG (Velocity made good)	<b>Boat</b>	Rudder Angle, Trim Tabs, Roll/Pitch
<b>Wind</b>	AWS (Apparent Wind Speed), TWS (True Wind Speed), Max TWS, AWA (Apparent Wind Angle), TWA (True Wind Angle), Beaufort Wind, GWD (Ground Wind Direction)	<b>Engine</b>	Engine RPM, Trip Fuel Used, Fuel Rate, Engine Trim/Tilt, Boost Pressure, Engine Temperature, Engine Hour, Oil Pressure, Oil Temperature, Coolant Pressure, Engine Load, Transmission Oil Temperature, Transmission Oil Pressure
<b>Heading</b>	HDG (Heading), Average HDG, Heading on Next Tack, ROT (Rate Of Turn)	<b>Tank</b>	Tank Level 1-6
<b>Course</b>	COG (Course Over Ground)	<b>Depth</b>	Depth
<b>Timer</b>	Count Down Timer 1, Count Down Timer 2, Count Up Timer	<b>AIS</b>	AIS (Max targets: 25, fixed 6NM range)
<b>Navigation</b>	Bearing, RNG (Range), WPT (Position), XTE (Cross-Track Error), Position, ETA Time, ETA Date, Trip, Odometer	<b>Voltage</b>	Supply Voltage
		<b>Environment</b>	Date & Time, Water Temperature, Air Temperature, Atmospheric Pressure, Humidity, Wind Chill Temperature, Dew Point

# Display Modes



Heading



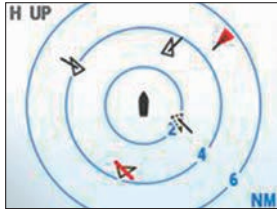
Wind



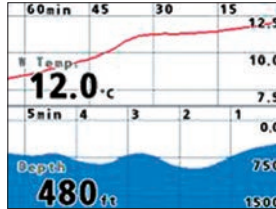
Engine RPM (Single)



Engine RPM (Triple)



AIS



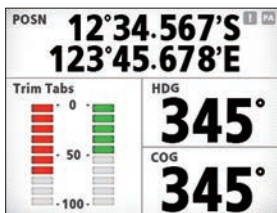
Graph



Timer



Highway



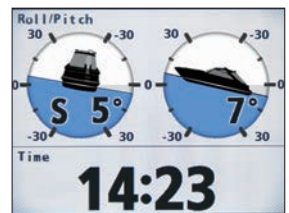
Data Box (Split)



Data Box (Single)



Rudder

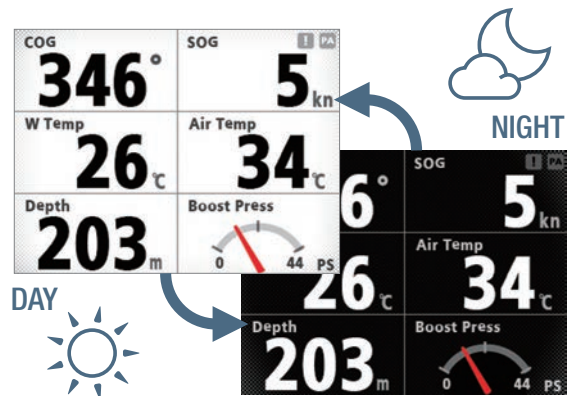


Roll & Pitch

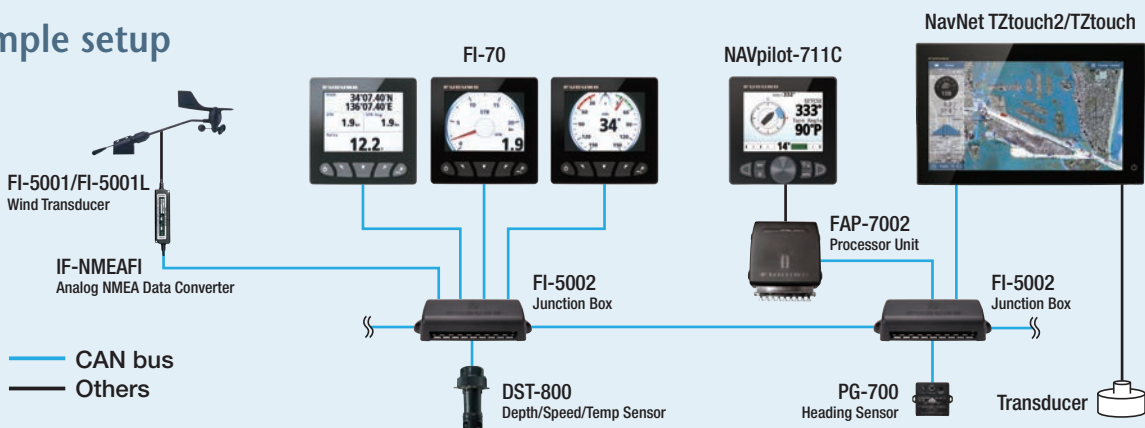
The NavNet TZtouch2, NAVpilot-711C and the FI-70 have been designed to match each other beautifully, both in appearance and in function. Sporting a clean and functional design in all black, the FI-70 fits right in on your helm, together with the NavNet TZtouch2 and NAVpilot-711C.



Day and Night modes are available for less eye strain. With Day and Night mode, losing your night vision is no longer an issue. Simply change between the two modes with a menu setting.



# Example setup





# SPECIFICATIONS OF

## Model **FI-70** INSTRUMENT / DATA ORGANIZER

### GENERAL

**Screen Size** 4.1" Color LCD  
**Pixel Number** 320 (V) x 240 (H) pixels (QVGA)  
**Brightness** Typical 700 cd/m<sup>2</sup>  
**Display Mode** Analog Meter, Graph, Highway, Race Timer, Simple AIS, Data Box

### INTERFACE

**Port** CAN bus (NMEA2000) x1  
**Input PGN:** 059904, 060928, 061184, 126208/720/992/996, 127237/245/250/251/257/258/488/489/493/497/505, 128259/267, 129025/026/029/033/038/039/040/283/284/285/794/809/810, 130306/310/311/312/313/316/576/577/816/821/822/825/880/841  
**Output PGN:** 059392/904, 060928, 061184, 126208/464/720/993/996, 130816/821/822/823/825/841

### POWER SUPPLY

**Power Supply** 15 VDC through CAN bus  
**Power Consumption** 15 VDC 0.25 A max, LEN3

### ENVIRONMENT

**Temperature** -15 °C to +55 °C  
**Waterproofing** IP56

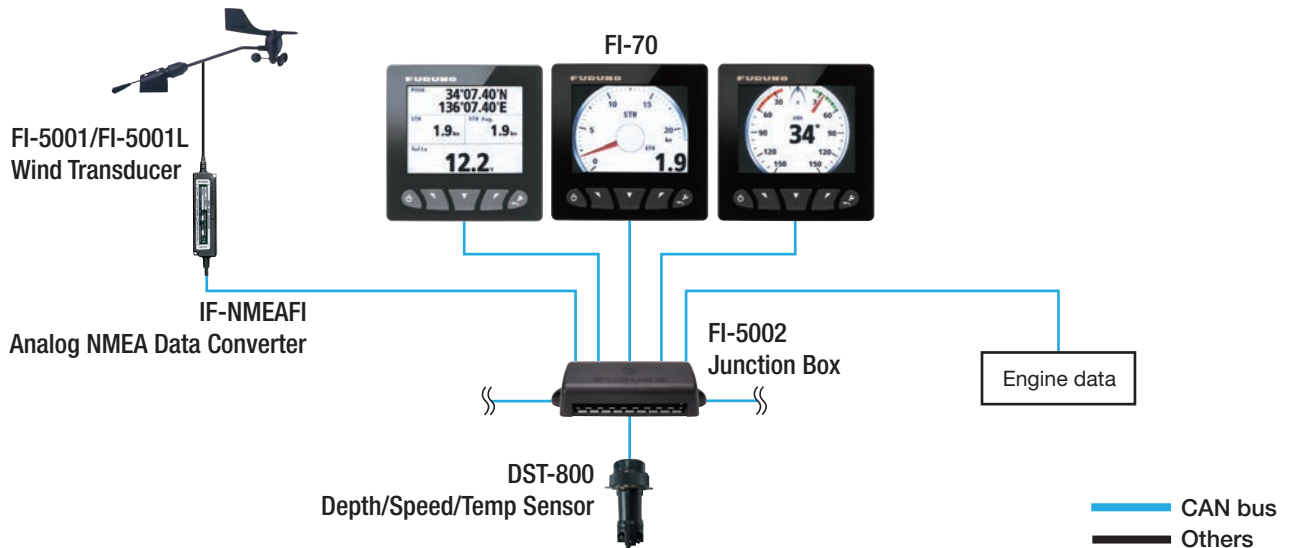
### EQUIPMENT LIST

**Standard**  
 1. Instrument FI-70 with 6 m cable 1 unit  
 2. Installation Materials

### Option

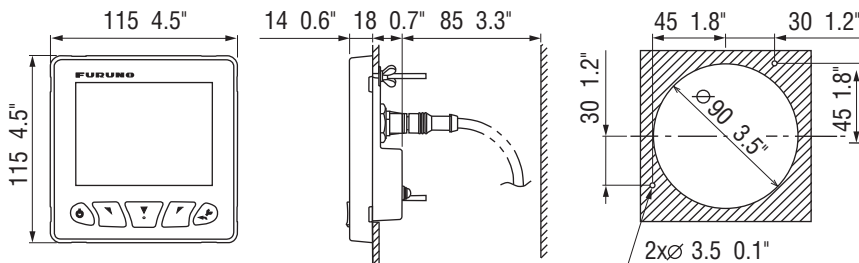
1. Junction Box	FI-5002
2. Depth/Speed/Temp Sensor	DST-800
3. Wind Transducer	FI-5001/FI-5001L
4. Analog NMEA Data Converter	IF-NMEAFI
5. Cable Assembly	M12-05BM+05BF 1/2/6 m
6. Cable Assembly	CB-05PM+05BF 1/2/6 m
7. Frontmount kit	OP26-29

## CONNECTION DIAGRAM

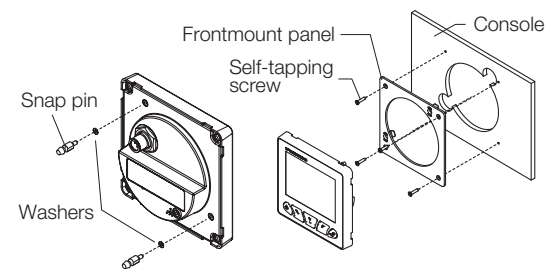


### Instrument FI-70

0.22 kg 0.5 lb



### Frontmount Installation



Beware of similar products

All brand and product names are registered trademarks, trademarks or service marks of their respective holders.

SPECIFICATIONS SUBJECT TO CHANGE WITHOUT NOTICE