

FURUNO

GPS/WAAS CHART PLOTTER with built-in CHIRP FISH FINDER

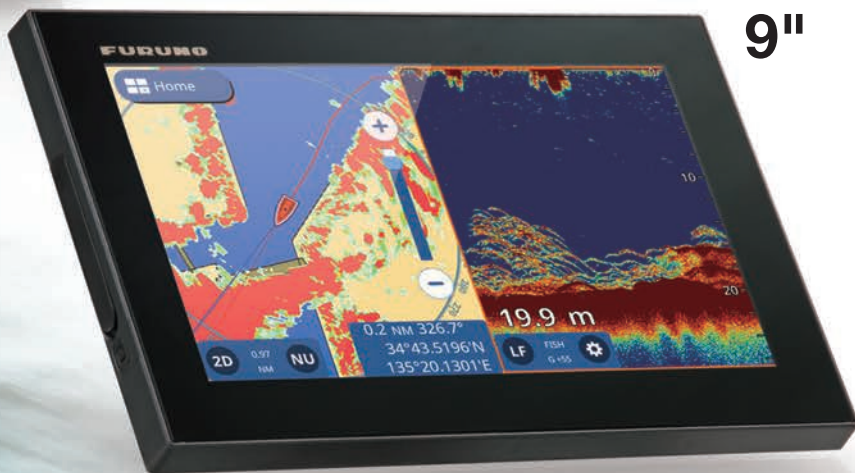
Model GP-1871F

Model GP-1971F

7"

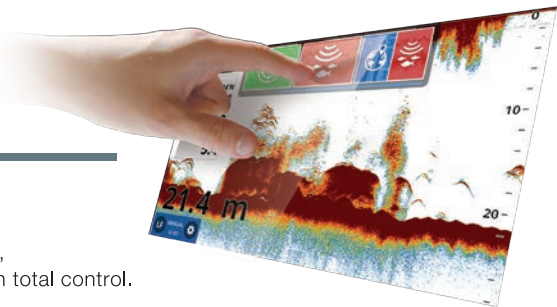


9"



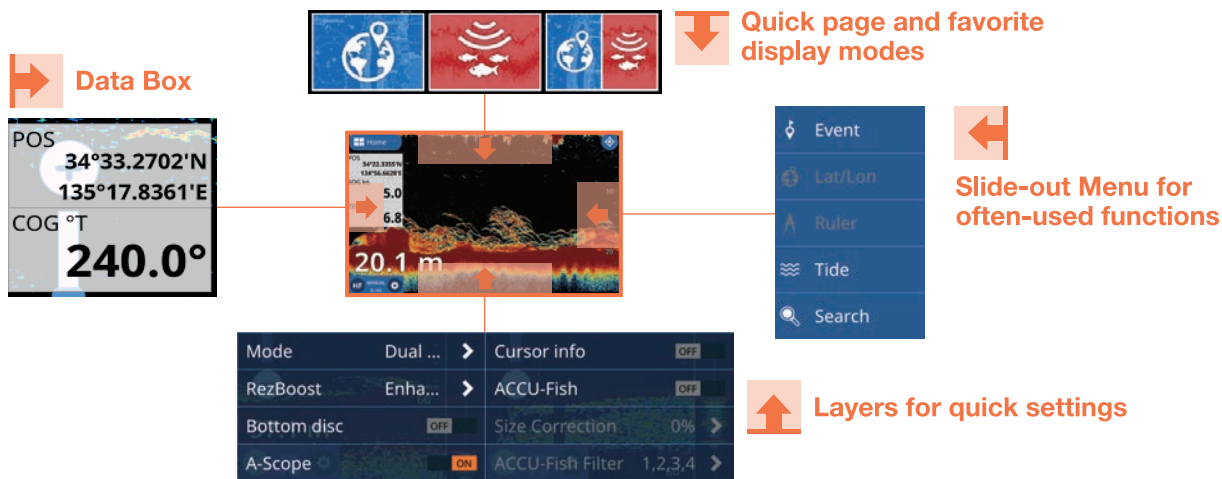


Multi-Touch Interface



➤ Convenient and intuitive slide-out menus

The GP-1871F/1971F smart interface, inherited from the NavNet TZtouch2, features slide-out menus containing all the tools and data you need to be in total control.



➤ Display modes customization

Customize your display modes and create the perfect combination to fit your individual needs.

➤ Easy screenshot!

Tap the display with two fingers to capture a screenshot that will be saved directly to your micro SD card.



Chart Plotter (with internal GPS antenna)

➤ Detailed Chart with C-MAP 4D compatibility

By using the incredibly rich C-MAP 4D charts, the GP-1871F/1971F delivers highly precise data that features plenty of useful information, such as relief vectors, tidal streams and marine plans, considerably enhancing your navigational awareness.



C-MAP Chart data



Chart Plotter with instruments panels

➤ Autopilot controls



Chart Plotter with NAVpilot controls



Via the CAN bus network interface, The NAVpilot-300 and NAVpilot-711C can be connected to the GP-1871F and GP-1971F and controlled directly from the Chart Plotter.

➤ Plotter with AIS symbols

When connected to an AIS receiver, the GP-1871F/1971F will display the latest AIS data and provide vessel information.

➤ Various display modes

Including Shaded reliefs, 3D and Satellite views.

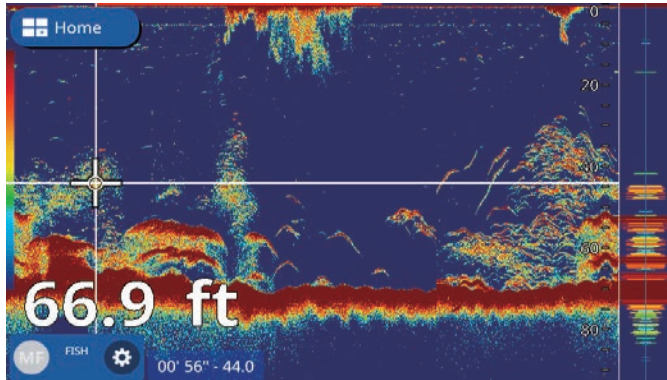


Built-in CHIRP Fish Finder

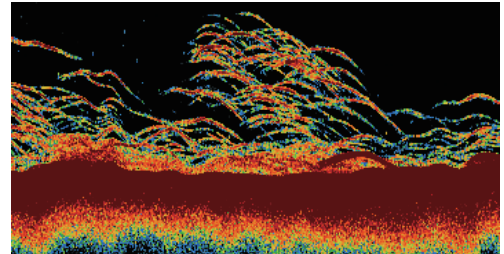


➤ Unmatched detail with TruEcho CHIRP™

*Requires connection to a CHIRP transducer



Fish echoes displayed with a CHIRP transducer



The high level of detail available with TruEcho CHIRP™ technology helps to distinguish fish schools, even when close to the sea bed.

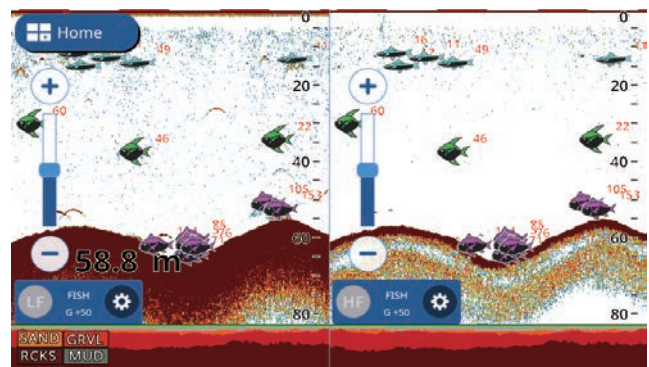
Fish can be observed with a very high resolution and are displayed in a distinct boomerang shape. The clear presentation marks individual game fish and bait fish, even when tightly schooled together.

➤ ACCU-FISH™ and Bottom Discrimination with RezBoost™

*Requires connection to a compatible CW Dual-Frequency transducer

With FURUNO's RezBoost™ data processing technology, fish schools and echoes are shown with high resolution while you can assess fish size and bottom composition thanks to ACCU-FISH™ and Bottom Discrimination functions.

Additionally, ACCU-FISH™ icons and colors can be freely customized according to the size and depth of the targeted fish.



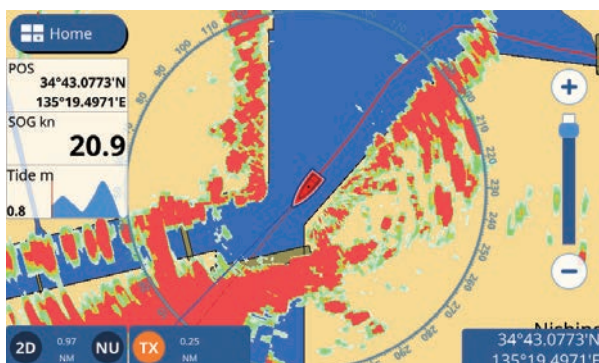
ACCU-FISH™ and Bottom Discrimination with RezBoost™



Wireless Radar Connection

➤ DRS4W 1st Watch Wireless Radar

The GP-1871F and GP-1971F are connectable to the 1st Watch Wireless Radar (Output Power 4 kW) giving your Chart Plotter a major upgrade in accuracy and safety.



Radar overlay mode



Wireless connection Between DRS4W and GP-1871F and GP-1971F

SPECIFICATIONS OF Model GP-1871F/GP-1971F

GPS/WAAS

Receive Type	GPS	72 channels
	WAAS	1 channel
Receiving Frequency	L1(1575.42 MHz)	
Time to First FIX	100 s approx. (cold start)	
Tracking Velocity	999 kn	
SBAS(Satellite-based Augmentation System)	WAAS, EGNOS, MSAS	
Electronic Chart	C-MAP 4D	

ACCURACY		
Internal Antenna	GPS:10 m Max, WAAS: 5 m Max, MSAS: 7.5 m Max	

DISPLAY

Type	GP-1871F: 7" Wide Color TFT LCD GP-1971F: 9" Wide Color TFT LCD
Screen Size	GP-1871F: 154 x 85 mm GP-1971F: 199 x 113 mm
Screen Resolution	WVGA 800 x 480 pixels
Screen Brightness	1000 cd/m ² (typical)
Language	English (US & UK), French, Spanish, German, Italian, Portuguese, Danish, Swedish, Norwegian, Finnish, Greek, Japanese, Chart Plotter, Fish Finder, Radar* ¹ , AIS* ² , Instruments* ³ (Nav Data, Engine, Wind, Fuel tank, Autopilot* ⁴ , etc.), GPS status
Display Modes	*1: Connection to the 1st Watch Wireless Radar DRS4W required *2: Connection to AIS sensor required *3: Connection to external sensors required *4: Connection to the FURUNO NAVpilot-300 or 700 series required
Memory Capacity	30,000 points for ship's track and waypoints 1,000 planned routes (Max. 50 points per route) 5,000 quickpoints

FISH FINDER

Frequency	CW: 50/200 kHz, CHIRP: 40 to 225 kHz
Transducer	300 W or 600 W or 1 kW (Transducer dependent)
Range	5-1,200 m, shift: 0-500 m
Modes	TrueEcho CHIRP™, RezBoost™, ACCU-FISH™, Bottom Discrimination**, Auto gain (Fishing/Cruising), Manual gain, A-Scope, Marker Zoom, Bottom Zoom, Bottom Lock
	* CHIRP dedicated transducer required. ** Dual frequency compatible transducer required.
Picture Advance	8 steps: x4, x2, 1/1, 1/2, 1/4, 1/8, 1/16, stop

WIRELESS LAN

Frequency	2.4 to 2.472 GHz (1 to 13 channels), IEEE802.11b/g/n
Security	WAPI, IEEE802.11i advanced security

INTERFACE

NMEA0183*	1 Port
* Software version 1.1 or later	
Interface(NMEA0183)	Input DBT, DPT, DSC, DSE, GGA, GLL, GNS, HDG, HDT, MTW, MWV, RMC, ROT, RSA, THS, TLL, VHW, VTG, ZDA, PFEC (GPatt/SDmrk/SDtbd/SDtfl/pireq) Output AAM, APB, BOD, BWR, DBT, DPT, GGA, GLL, GNS, GSA, GSV, GTD, HDG, HDT, MTW, MWV, RMB, RMC, RTE, THS, TLL, VHW, VTG, WPL, XTE, ZDA, PFEC (SDmrk/SDtbd/SDtfl/pidat)
NMEA2000	1 Port
Interface(CAN bus)	Input 126992, 127245, 127250, 127251, 127258, 127488, 127489, 127493, 127497, 127505, 128259, 128267, 128275, 129025, 129026, 129029, 129038, 129039, 129040, 129041, 129284, 129285, 129538, 129540, 129793, 129794, 129798, 129808, 129809, 129810, 130306, 130310, 130311, 130312, 130313, 130314, 130316, 130577, 130830, 130831, 130832, 130880 Output 126992, 127245, 127250, 127251, 127257, 127258, 127505, 128259, 128267, 128275, 129025, 129026, 129029, 129033, 129283, 129284, 129285, 130306, 130310, 130312, 130316, 130830, 130831, 130832
Micro SD Card Slot	2 Slots, up to 32 GB (SD, SDHC Supported)

ENVIRONMENT

Temperature	-15°C to +55°C
Waterproofing	IP56

POWER SUPPLY

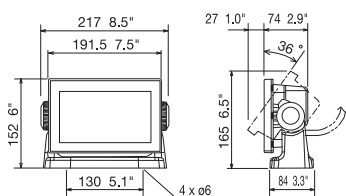
GP-1871F:	12-24 VDC, 1.0-0.5 A
GP-1971F:	12-24 VDC, 1.0-0.5 A

EQUIPMENT LIST

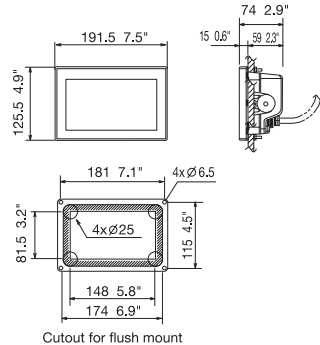
- Standard**
- Display Unit (GP-1871F or GP-1971F)
- Installation Materials and Spare Parts

GP-1871F Display Unit

(Bracket Mount) 1.1 kg 2.4 lb

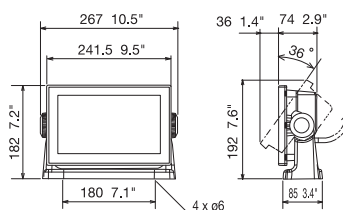


(Flush Mount) 0.9 kg 2.0 lb

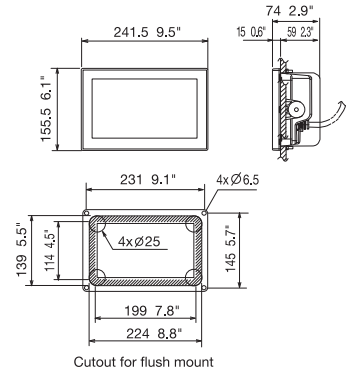


GP-1971F Display Unit

(Bracket Mount) 1.5 kg 3.3 lb



(Flush Mount) 1.3 kg 2.9 lb



Beware of similar products

All brand and product names are registered trademarks, trademarks or service marks of their respective holders.

SPECIFICATIONS SUBJECT TO CHANGE WITHOUT NOTICE

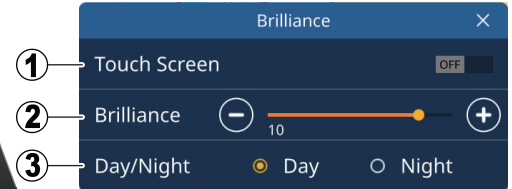
Operational Overview

Power/Brilliance key and microSD card slots

Peel the cover from the bottom to show:
 microSD card slots (2 places)
 Note: Insert cards on an angle towards the back of the unit.
 Forced shut-down button



Power/Brilliance key
 • Long press: Turn power on/off.
 • Short press: Show the Brilliance settings pop up window. Adjust the brilliance.

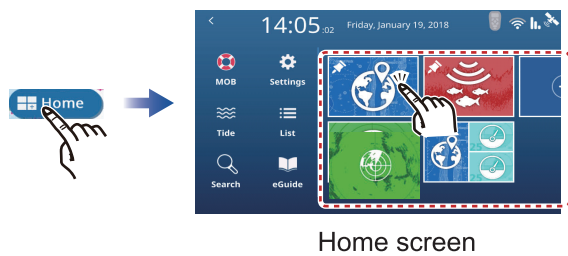


Brilliance settings pop up window

- ① Lock the touch screen.
- ② Adjust the screen brilliance.
- ③ Change the color scheme.

How to select the displayed page

Method 1: From the Home screen

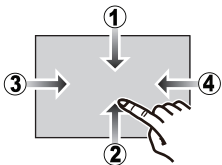


Method 2: From the Quick Page list



*: Pages "pinned" with the pin tool (📌) from the Home screen.

Edge-swipe functions



- ① Top edge of the screen, downwards: Shows the Quick Page list.
- ② Bottom edge of the screen, upwards: Shows the layered menu.
- ③ Left edge of the screen, rightwards: Shows the data boxes.
- ④ Right edge of the screen, leftwards: Shows the slide-out menu.

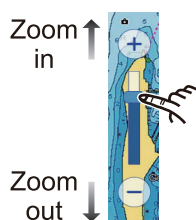
Chart Plotter

Zoom in/Zoom out

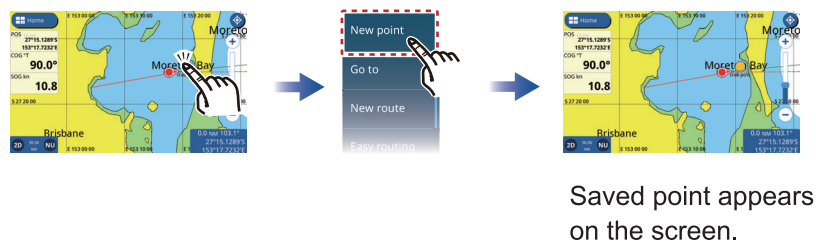
Method 1: Screen-pinch



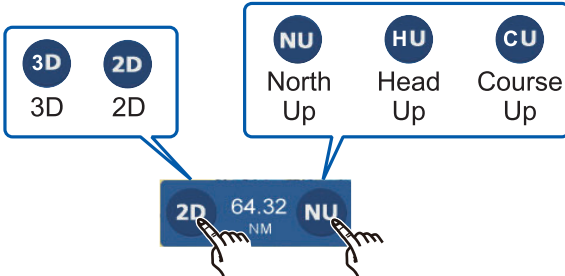
Method 2: Slide bar



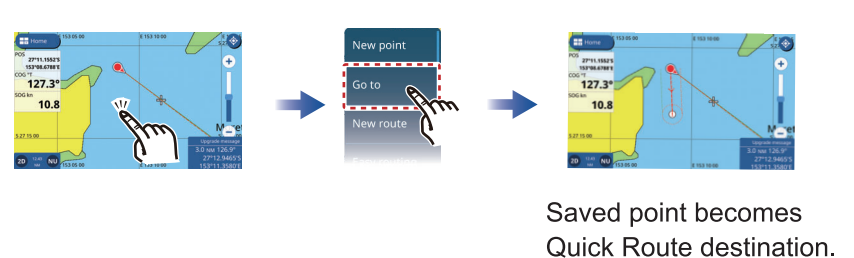
Point Creation



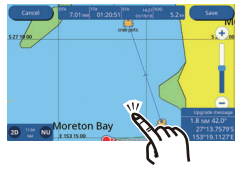
Changing the display orientation



Quick Route Creation

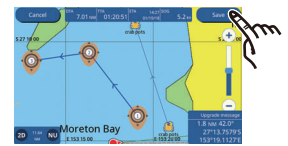


Planned Route Creation



Tap the location of the next waypoint.

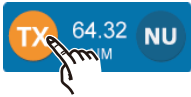
Repeat



Tap Save route after entering the final waypoint.

Radar

Standby/Transmit



TX : Transmitting
TX : In standby

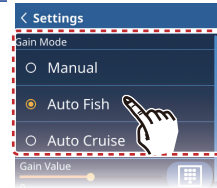
Fish Finder

Frequency Selection

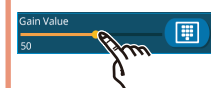


HF : High Freq.
LF : Low Freq.

Gain mode selection

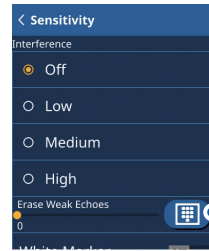
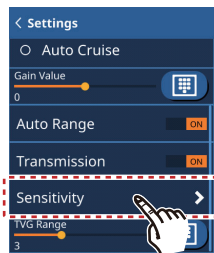


Auto modes: Tap [Auto Fishing] or [Auto Cruise].
 Manual mode: Tap [Manual].



For manual mode, drag the slider icon (circle).

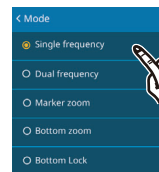
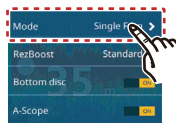
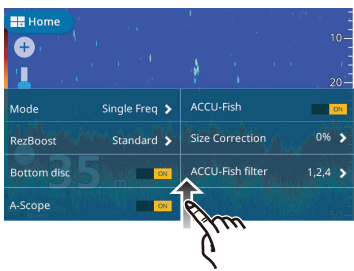
Echo Adjustments



Reduce interference

Remove weak echoes

Display mode selection



- Single frequency
- Dual frequency
- Marker Zoom
- Bottom Zoom
- Bottom Lock

Instruments

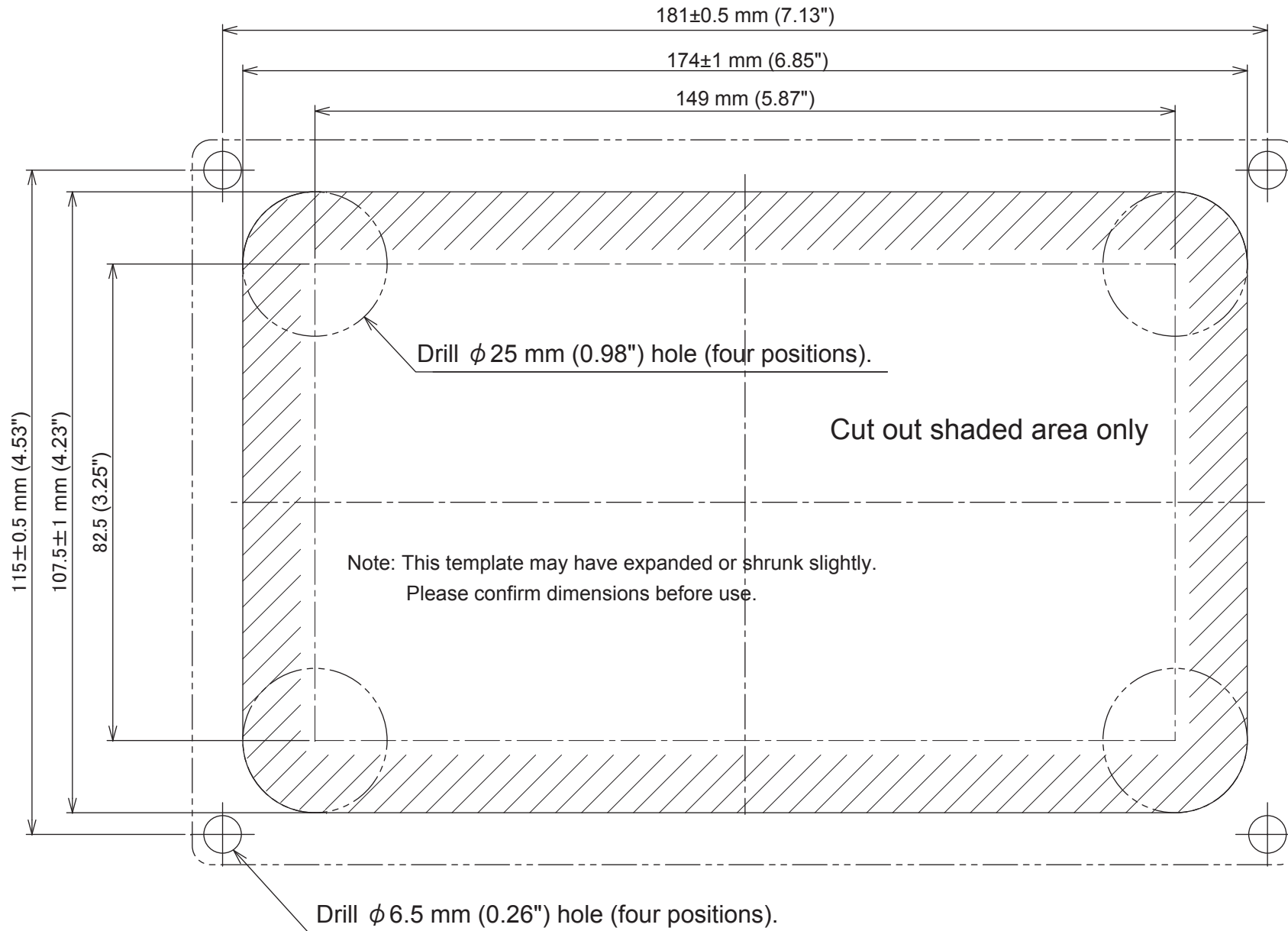
Instrument selection

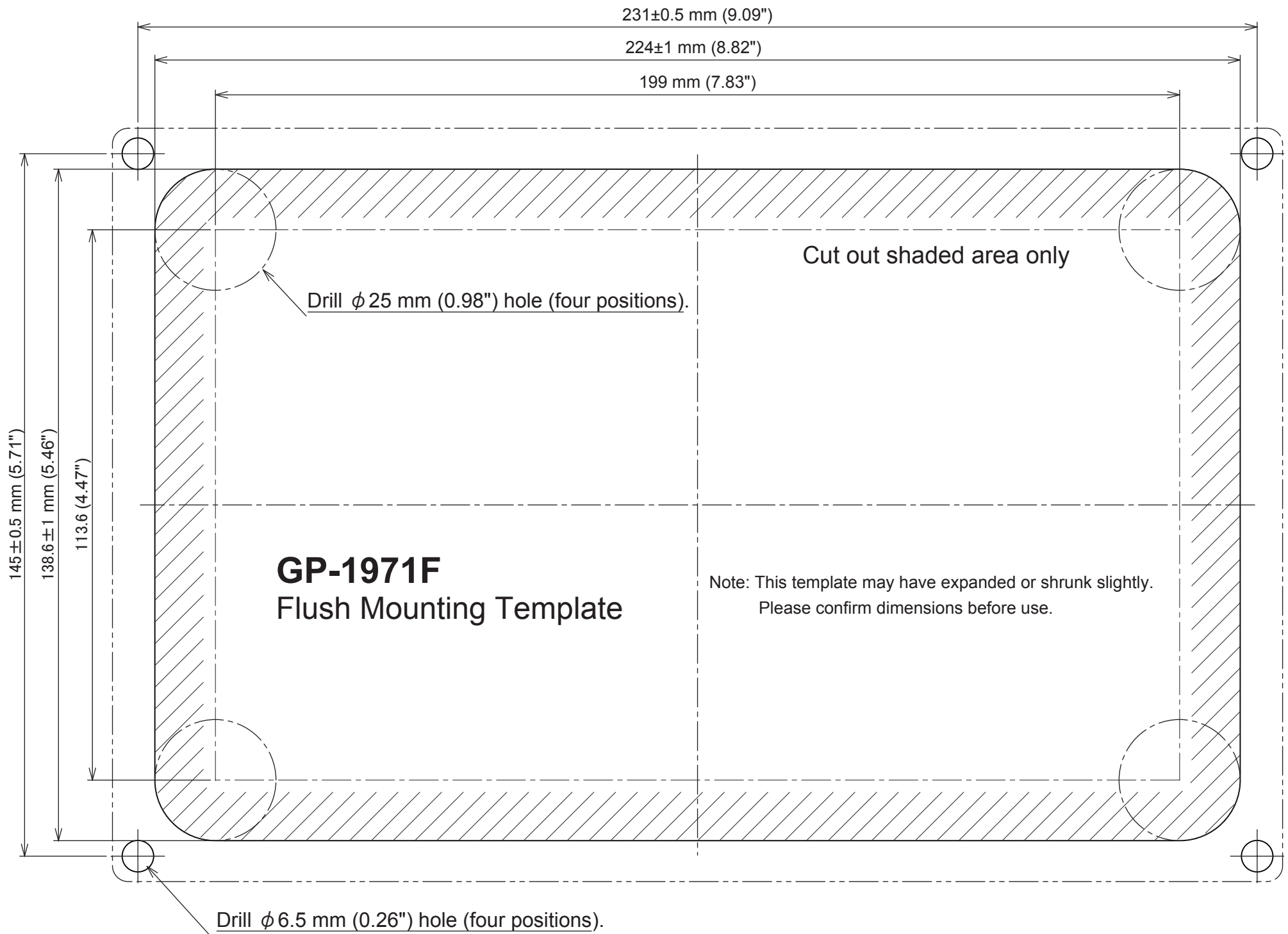


Repeat
 (Up to 7 pages available)

GP-1871F

Flush Mounting Template





FURUNO

PACKING LIST FOR GP1971F

For Internal Use Only	
Serial No.	_____
Checked By:	_____
Tech _____	_____
Date _____	_____

Yes	Remarks

Box 1 - GP1971F			Wt: 7 lbs. Dim: 12" x 16" x 10"
Part No.	Description	Quantity	
1	GP1971F	Color LCD Plotter	1
2	001-533-230-00	Grey Cover	1
3	001-546-670-00	Mounting Bracket	1
4	100-418-430-10	Mounting Knob	2
5	000-196-513-10	Self Tapping Screw M4.8 X 22	4
6	001-533-250-00	Power/Data Cable Assy	1
7	001-205-060-00	Cleaning Cloth	1
8	MLG-449-80Z	Operator's Guide	1
9	IME-449-80Z	Installation Manual	1
10	C42-017-19Z	Flush Mount Template	1
11	000-196-519-10	Flush Mount Gasket	1
12	001-533-240-00	Flush Mount Kit	1



DRS4W



VHF-Radar Minimum Separation of 3FT

VHF/AIS WHIP (LOCAL SUPPLY)

12-24 VDC

IPAD W/ NOBELTEC APP (IPAD AND OPTIONAL NOBELTEC APP NOT INCLUDED)

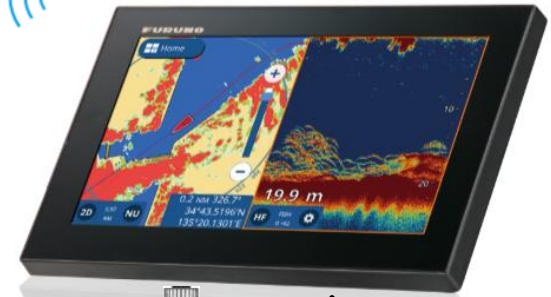


(iOS 6.1.3, 7.04 or Higher)

FM4800



GP1871F/1971F



12-24 VDC



Single Band Chirp Transducer

NMEA2000 Micro Double-ended cable Female-Male
1 meter = 001-105-750
2 meter = 001-105-760-10
6 meter = 001-105-770-10

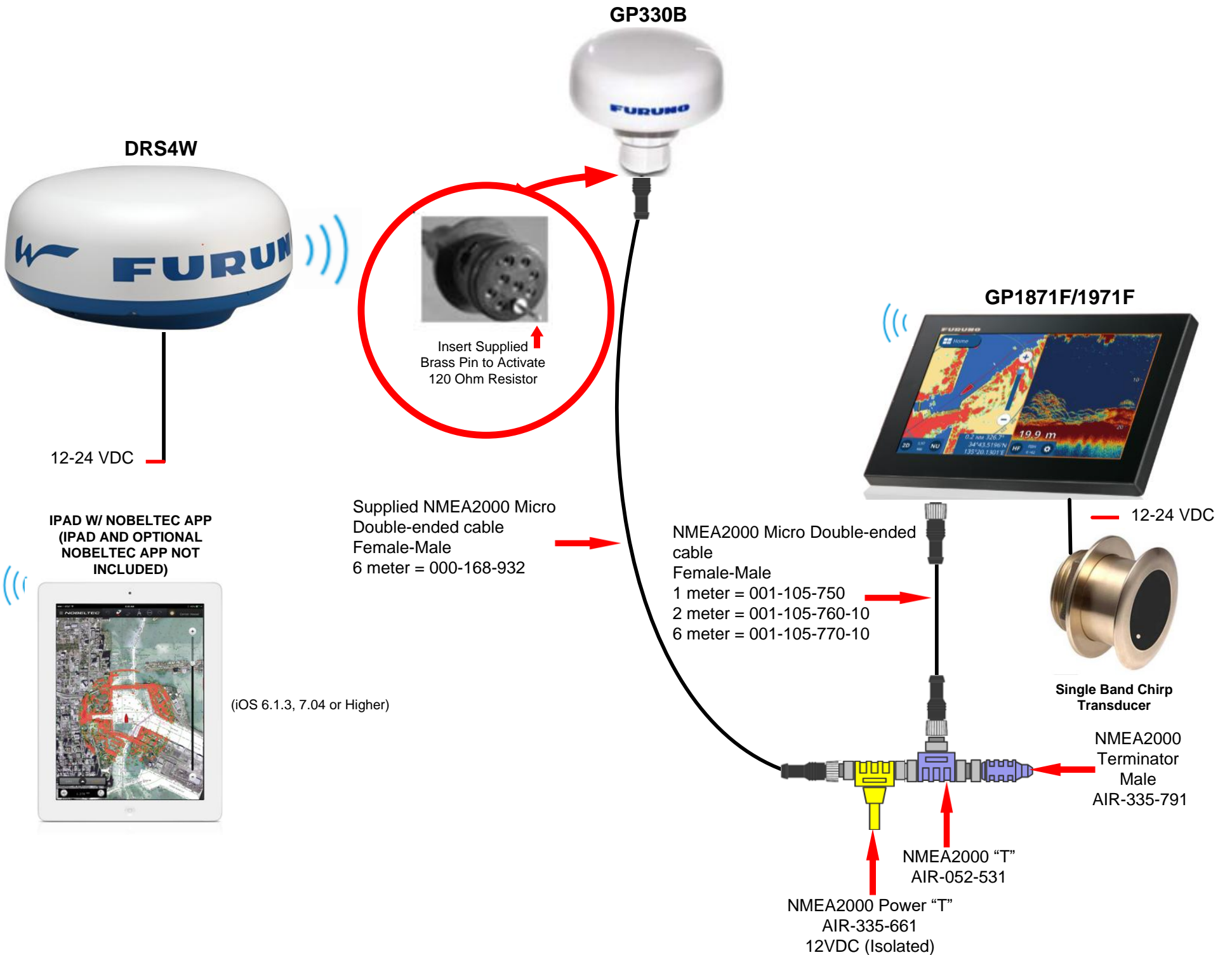
NMEA2000 Terminator Male AIR-335-791

NMEA2000 Terminator Male AIR-335-791

NMEA2000 "T" AIR-052-531

NMEA2000 Micro Double-ended cable Female-Male
1 meter = 001-105-750
2 meter = 001-105-760-10
6 meter = 001-105-770-10
10 meter = 001-105-850
20 meter = 001-105-860

NMEA2000 Power "T" AIR-335-661 12VDC (Isolated)



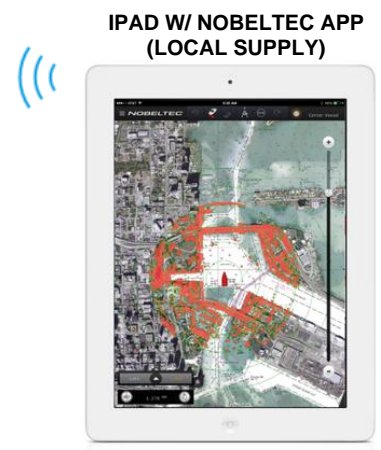


DRS4W

FURUN

VHF-Radar Minimum Separation of 3FT

VHF/AIS WHIP (LOCAL SUPPLY)



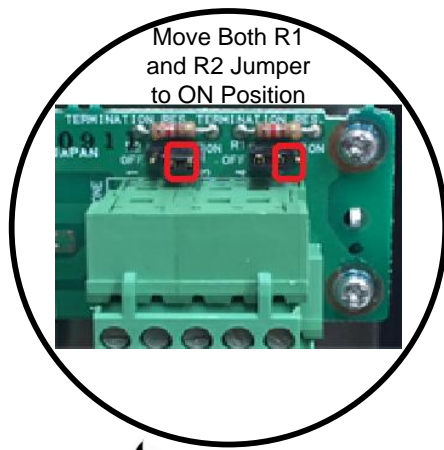
IPAD W/ NOBELTEC APP (LOCAL SUPPLY)

(iOS 6.1.3, 7.04 or Higher)

12-24 VDC



FM4800



Move Both R1 and R2 Jumper to ON Position



GP1871F/1971F

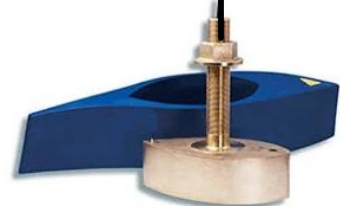
12-24 VDC

12 VDC

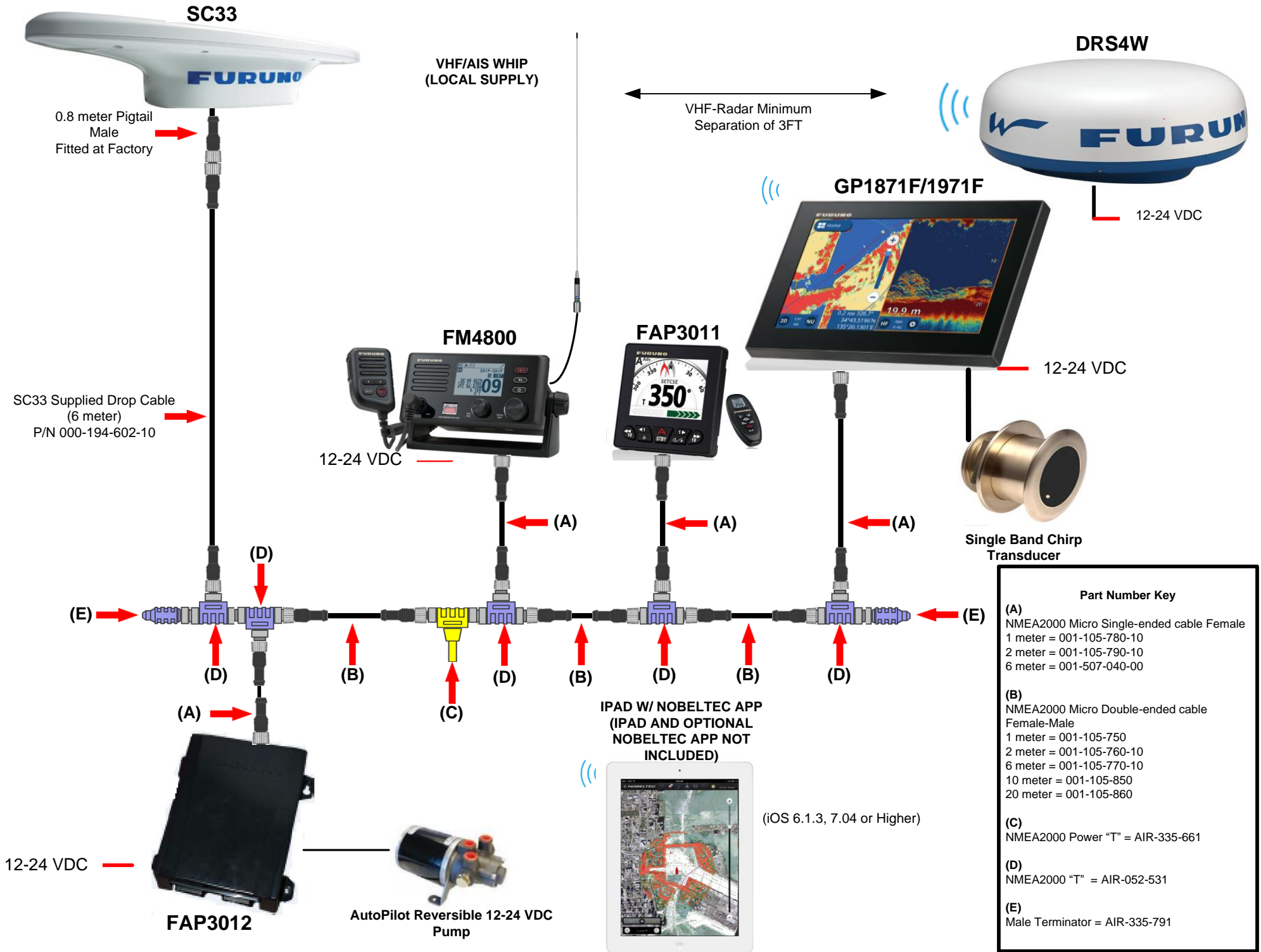


NMEA2000 Micro Single-ended cable Female

- 1 meter = 001-105-780-10
- 2 meter = 001-105-790-10
- 6 meter = 001-507-040-00



Single Band Chirp Transducer



VHF/AIS WHIP
(LOCAL SUPPLY)

VHF-Radar Minimum
Separation of 3FT

DRS4W

0.8 meter Pigtail
Male
Fitted at Factory

SC33 Supplied Drop Cable
(6 meter)
P/N 000-194-602-10

12-24 VDC

FM4800

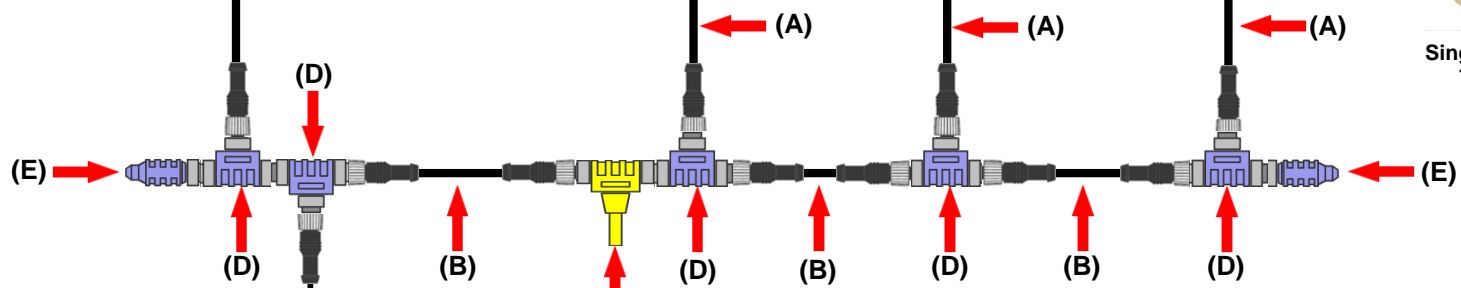
FAP3011

GP1871F/1971F

12-24 VDC

12-24 VDC

Single Band Chirp
Transducer



IPAD W/ NOBELTEC APP
(IPAD AND OPTIONAL
NOBELTEC APP NOT
INCLUDED)

(iOS 6.1.3, 7.04 or Higher)



Part Number Key	
(A)	NMEA2000 Micro Single-ended cable Female 1 meter = 001-105-780-10 2 meter = 001-105-790-10 6 meter = 001-507-040-00
(B)	NMEA2000 Micro Double-ended cable Female-Male 1 meter = 001-105-750 2 meter = 001-105-760-10 6 meter = 001-105-770-10 10 meter = 001-105-850 20 meter = 001-105-860
(C)	NMEA2000 Power "T" = AIR-335-661
(D)	NMEA2000 "T" = AIR-052-531
(E)	Male Terminator = AIR-335-791