

## NavNet 3D Chart Installation Guide v3.0

MFD8/12/BB



<b>1. DATA CATALOG .....</b>	<b>2</b>
1.1. SystemID .....	2
1.2. Memory Blocks .....	2
1.3. Data List .....	3
1.3.1. Reference .....	3
1.3.2. Status .....	3
1.3.3. Release Version .....	3
<b>2. MM3D CHART DATA AVAILABLE ON THE INTERNET .....</b>	<b>4</b>
2.1. Download Charts from the Internet .....	4
2.2. Unzip the Downloaded File .....	6
2.3. Transfer Data to the SD-Card or USB Flash Drive .....	6
2.3.1. Copy the Chart Data .....	6
2.3.2. Paste the Chart Data .....	8
<b>3. MM3D USB HARD-DRIVE INTRODUCTION .....</b>	<b>9</b>
3.1. Connecting the Hard-Drive .....	9
3.2. Hard-Drive File Structures .....	10
3.3. Transfer Data to the SD-Card or Flash Drive .....	11
<b>4. HOW TO INSTALL NEW DATA ONTO THE MFD .....</b>	<b>14</b>
4.1. Introduction .....	14
4.2. Transfer Data to the NavNet 3D MFD .....	14
4.3. Unlock Chart Data .....	15
<b>5. MEMORY AVAILABILITY .....</b>	<b>16</b>
5.1. Introduction .....	16
5.2. Deleting Data .....	17
<b>6. APPENDIX .....</b>	<b>19</b>
6.1. How to Format an SD-Card .....	19
6.1.1. Introduction .....	19
6.1.2. Format an SD-Card Using Software (recommended) .....	19
6.1.3. Format an SD-Card Using Windows .....	20
6.2. How to format a USB Jump Drive .....	20
6.3. Recommended SD-Card .....	21

# 1. Data Catalog

Chart Data (Nautical Charts, Satellite Photos and 3D data) must be installed on each NavNet 3D MFD's internal memory before it can be used by the Plotter. The chart installation is handled from the Data Catalog menu page (as seen in *Figure 1.1*). To display the Data Catalog, press the [MENU] key. Turn the RotoKey to display the "Chart" page. Push the RotoKey and then turn the RotoKey clockwise to select the "Data Catalog" tab. Menus and tabs may also be selected using the scrolling pad, cursor pad or a conventional mouse (if one is installed via the NavNet 3D USB connection).

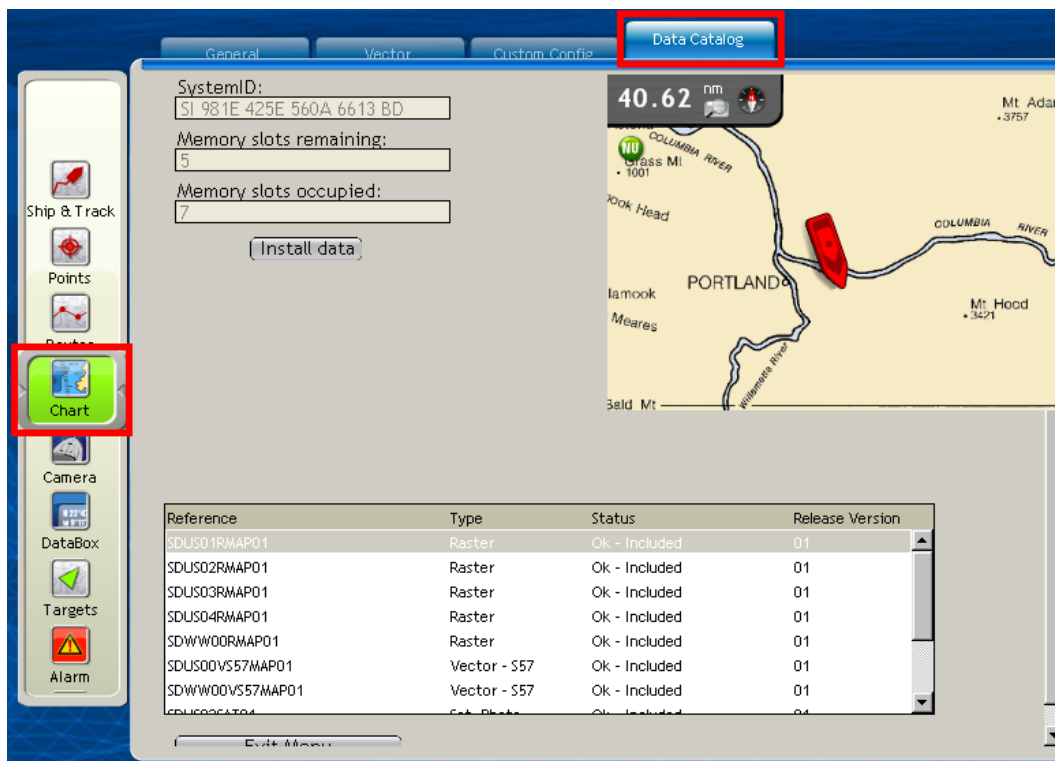


Figure 1.1

## 1.1. SystemID

The SystemID is a unique 20 digit number that identifies a NavNet 3D system. The SystemID is required to purchase charts and must be provided when charts are ordered.

## 1.2. Memory Blocks

The MFD's internal memory is divided into "Memory Blocks," also referred to as "Memory Slots" in the system software. A memory block may contain a minimum of (1) area of data (Raster, Vector, Satellite Photo or 3D data). NavNet 3D comes preloaded with chart data for the U.S. and has memory blocks available to install additional data. NavNet 3D will show how many memory blocks are occupied and how many are remaining. Note that if no memory blocks are available (Memory Slot remaining = 0), additional data may not be loaded until free space is created by deleting select data from the MFD. Please refer to section 5.2 for more information on how to free memory blocks.

## 1.3. Data List

The Data List shows all the data installed on the MFD's internal memory and gives basic information for each item installed. You can select the data by using the RotoKey or clicking on it with the cursor pad or a mouse (if installed). When an item in the list is selected, the preview screen automatically centers on it, giving basic information about the location of the data. If you push on the RotoKey while the data is selected (or right click on it) a menu will appear (Delete, Insert Unlock Code, Repair, etc.)

### 1.3.1. Reference

"Reference" is the name of the Data File

"Type" describes the type of data:

- Raster: Raster Charts (digital scan of the Paper Charts)
- Vector-HOs S57: Vector chart data originated directly from hydrographic office (such as NOAA)
- Vector-Jeppesen: Vector chart data originated from Jeppesen (C-MAP)
- Vector-Navionics: Vector chart data originated from Navionics
- Sat. Photo: Satellite Photo
- 3D: 3D (bathymetric/topographic) information

### 1.3.2. Status

The following Status may appear:

- "OK – Included": When the data does not require an unlock code
- "OK – Unlocked": When purchased data was successfully unlocked (a valid Unlock Code was entered)
- "OK – Locked": When the data is correctly transferred into the MFD, but no Unlock Code was entered. In this state, the Chart cannot be displayed until a valid Unlock Code is entered (highlight the corresponding line from the list and push the RotoKey or Right Click on it to enter the Unlock Code; See section 4.3)
- "Corrupted": When the Data cannot be read by the system. Highlight the corresponding line from the list and push the RotoKey or Right Click on it to try to Repair it. If the area cannot be repaired, you will have to delete it from the Chart Catalog and re-install it.

### 1.3.3. Release Version

All Data contains a release version. When a customer purchases charts, he purchases an area with the current release version. The Unlock Code provided may only work for a specific edition number (or earlier edition numbers). Make sure that you always have the latest release version installed.

## 2. MM3D Chart Data Available on the Internet

### 2.1. Download Charts from the Internet

Any Charts and Satellite Photos (free or for pay) can be downloaded at any time from the Mapmedia. Select the NavNet3D MM3D Catalog as shown in *Figure 2.1*:

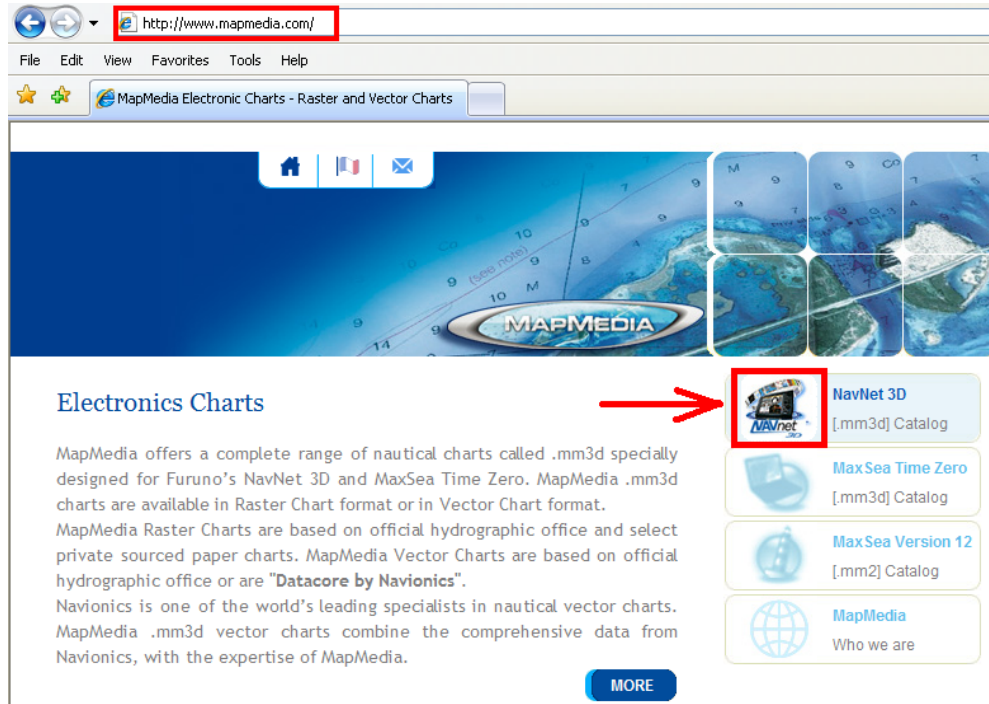


Figure 2.1

The various tabs at the top of the Chart Catalog (as shown in *Figure 2.2*) allow you to select the data provider of the charts you want to download. All the free USA data (NOAA Raster Charts, NOAA Vector Charts, Satellite Picture, Fishing Charts and 3D Data) can be found under the "NOAA USA" tab. The World Base Map Tab groups all the Base Maps (Raster, Jeppesen, Navionics, 3D...). The World Base Maps don't require any unlock codes (free). The Chart Data available under the other tabs (Raster, Jeppesen, Navionics...) requires an Unlock Code to be used on NavNet3D.



Figure 2.2

Once you click on a tab, click on the map to select an area:



Figure 2.3

Roll the mouse over the map (or select the chart number from the pull down menu) to see the coverage of each area:

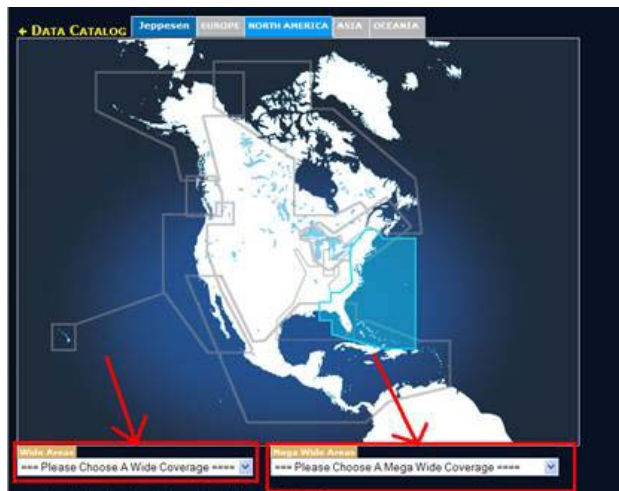


Figure 2.4

When you click on a chart area, links appear at the bottom of the screen allowing you to download the corresponding data:



Figure 2.5

Each link redirects you to a page where you can see the actual coverage of the file (and see if multiple files are required). The map is interactive, meaning that you can pan or zoom:



Figure 2.6

To download the file, find the download button at the center of the area (surrounded in red on the picture above) and put the cursor over it. A link will appear allowing you to download the corresponding ZIP file.



Figure 2.7

## 2.2. Unzip the Downloaded File

When the file download is complete, unzip and save the file in a folder designated by you.

## 2.3. Transfer Data to the SD-Card or USB Flash Drive

You can only use SD-Cards (2GB or less) to transfer Chart Data to an MFD8/12. However, you can use a USB Flash drive (2, 4, 8 or 16GB) to transfer multiple charts at once to the MFD8/12 using the USB2.0 port on the processor (much faster than using the SD-Card slot).

### 2.3.1. Copy the Chart Data

**How to copy a single file (such as a High Resolution Satellite Photo area):**

To copy a single file (such as a high resolution Satellite Photo area), right click on the file you unzipped (ending with “.dba” for satellite picture) and choose “Copy”. (See *Figure 2.7*)

**Warning:** Do NOT rename the file or change its extension.

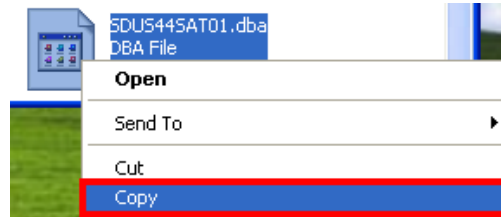


Figure 2.7

**How to copy multiples files (such as a Chart Pack):**

Multiple files can be copied on the same SD-Card as long as the total size (size of all the files combined) is less than 2GB. If the files do not fit on one SD-Card, you will have to use multiple SD-Cards.

**Note:** The size of any single file that can be downloaded is always less than 2GB (in order to fit on a 2GB SD-Card). Most of the files are much smaller than 2GB and multiple files can usually be combined one SD-Card.

Select all of the files in the folder you unzipped (CTRL-A or “Edit” > “Select All”), then copy the files (CTRL-C or “Edit” > “Copy”). (See *Figure 2.8*)

**Warning:** Do NOT rename the file or change its extension.

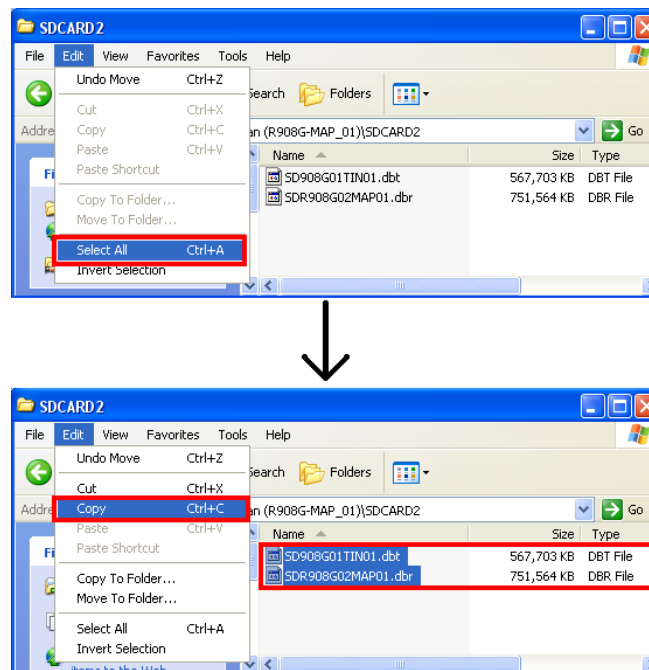


Figure 2.8

### 2.3.2. Paste the Chart Data

*Note:* Please refer to the Appendix at the end of this document (Section 6.) to learn how to properly format the SD-Card or the USB flash drive prior to transferring the chart data.

Insert a properly formatted 2GB SD-card into the SD-Card reader of the computer or a USB flash drive. If a folder doesn't automatically open, follow the instructions below:

- Click Start and select “My Computer”.
- Double-click on the Removable Disk. The name of your external drive may vary (see Figure 2.9).

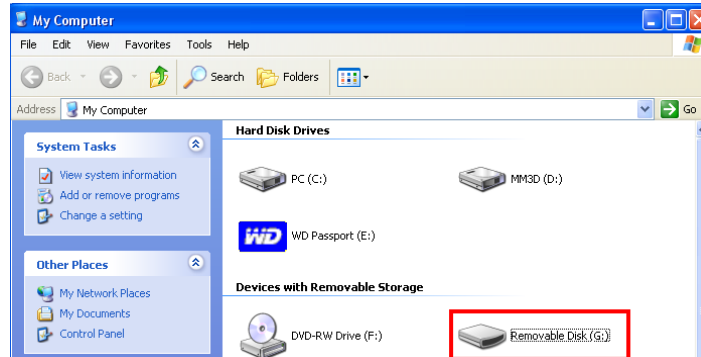


Figure 2.9

Paste the file(s) at the root directory of the SD-Card or Flash Drive (CTRL-V or “Edit” > “Paste”). (See figure 2.10)

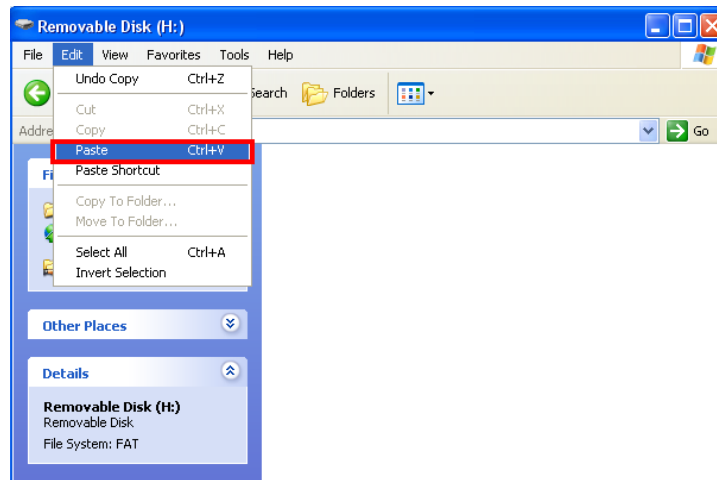


Figure 2.10

*Note:* If you are using a Flash Drive to load the chart(s) into a MFDBB, you are not limited to transfer 2GB at a time. You can load multiple charts at the same time as long as you don't overload the MFDBB memory. To know how much data you can load on the MFDBB, look at the number of Memory Slots available (Menu -> Chart Catalog) and multiply this value by two. This will give the maximum number of Gigabits that you can load on the MFDBB (ex: if four memory slots are available, you can load up to 8GB of data onto the Flash Drive)



When the transfer is completed, remove the SD-Card or the Flash Drive from the computer.

*Note: To safely remove the SD-Card or Flash Drive, return to the “My Computer” window, right-click on the External Drive, then click Eject.*

### **3. MM3D USB Hard-Drive Introduction**

The MM3D external USB hard-drive contains chart data that can be used with NavNet 3D. The chart data can be copied onto SD-Cards (2GB SanDisk SD-Cards recommended) or USB Flash Drive (MFDBB only) then installed into the NavNet 3D MFD(s) using the integrated SD-Card reader of the display (MFD8/12) or USB2.0 port (for the MFDBB).

**Furuno USA strongly recommends the use of the external USB hard-drive as the best method for loading chart data onto SD-Card(s)/Flash Drive.**

All the Data contained in the “NOAA USA” folder can be installed into any NavNet 3D display without unlock code (free data). The Data contained in the other folders can be copied and distributed but will require an Unlock Code when installed into any NavNet 3D MFD.

*Warning: Do NOT rename or change the extension of any files contained on the external USB hard-drive.*

The instructions below explain how to transfer the Data from the external USB hard-drive to the SD-Card(s) or Flash Drive. Please note that you can also transfer the entire contents of the external USB hard-drive to a computer (this will improve the transfer speed to the SD-Card)

*Note: PC Required. The external USB hard-drive cannot be connected directly to NavNet 3D: SD-Cards or Flash Drive are required to transfer the data.*

#### **3.1. Connecting the Hard-Drive**

Insert the USB cable of the external USB hard-drive directly into an available USB port on your PC. The USB connection will be used to transfer data and power to the external USB hard-drive (no extra power supply is required).

*Note: In the lower right-hand corner of your screen, you may see a message indicating that a new device has been detected. It may take about 10 seconds until you see “Device is ready for use.”*

If the external drive folder doesn't automatically open, follow the instructions below:

- Click Start and select “My Computer”.
- Double-click your external hard-drive icon. The name of your external drive may vary. For example: MM3D (D:) (see *Figure 3.1*):

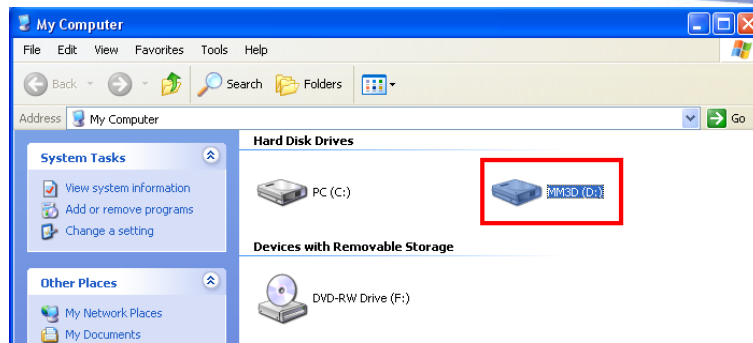


Figure 3.1

### 3.2. Hard-Drive File Structures

The hard-drive contains multiple folders and subfolders. The first level allows you to choose the data provider (“NOAA USA”, “Jeppesen”, “Navionics”...) see Figure 3.1

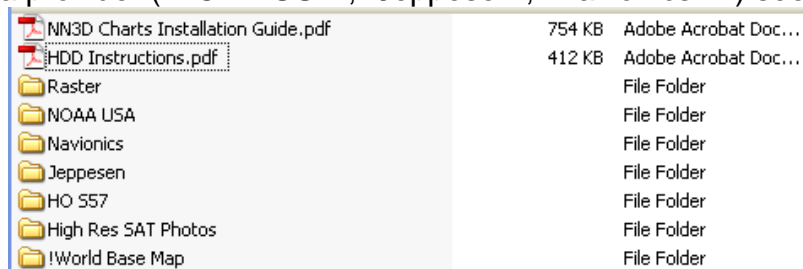


Figure 3.1

Once you select the provider, you will be able to select the type of area (usually Wide or MegaWide). A PDF file located at this level will help you select the area you want (it lists the chart references with a description).

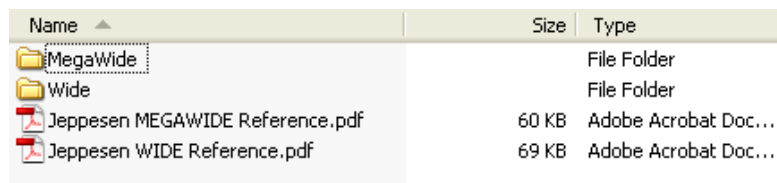


Figure 3.2

A Chart Pack consists of multiple data: Nautical Charts, Satellite Photos and 3D Data. In some cases, multiple SD-cards will be required for one Chart Pack. In this example (Chart Pack for the Caribbean), you will need (2) SD-Cards for the Chart and 3D data and (2) SD-Cards for the optional Satellite Picture (see Figure 3.3).

*Note: If you are using a Flash Drive to load the chart(s) into a MFDBB, you are not limited to transfer 2GB at a time. You can load multiple charts at the same time as long as you don't overload the MFDBB memory. To know how much data you can load on the MFDBB, look at the number of Memory Slots available (Menu -> Chart Catalog) and multiply this value by two. This will give the maximum number of Gigabits that you can load on the MFDBB (ex: if four memory slots are available, you can load up to 8GB of data onto the Flash Drive)*

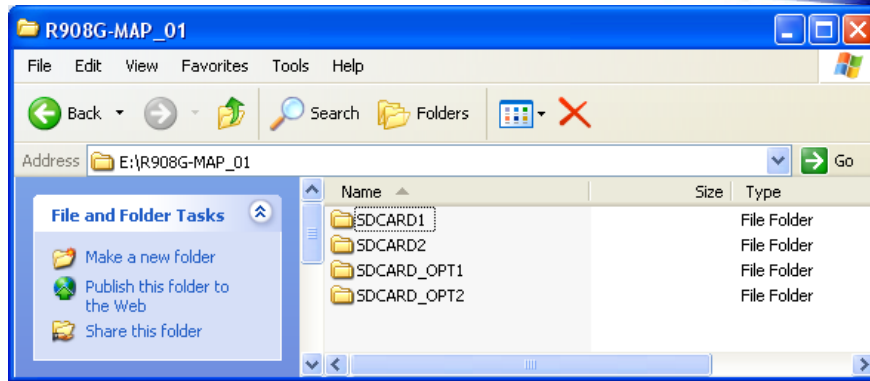


Figure 3.3

### 3.3. Transfer Data to the SD-Card or Flash Drive

*Note: Please refer to the Appendix at the end of this document to learn how to properly format the SD-Card or Flash drive prior to pasting the chart data.*

Open the first folder “SDCARD1”. Select all the files inside the folder (CTRL-A or “Edit” > “Select All”). Copy all of the files (CTRL-C or “Edit” > “Copy”). (See Figure 3.6)

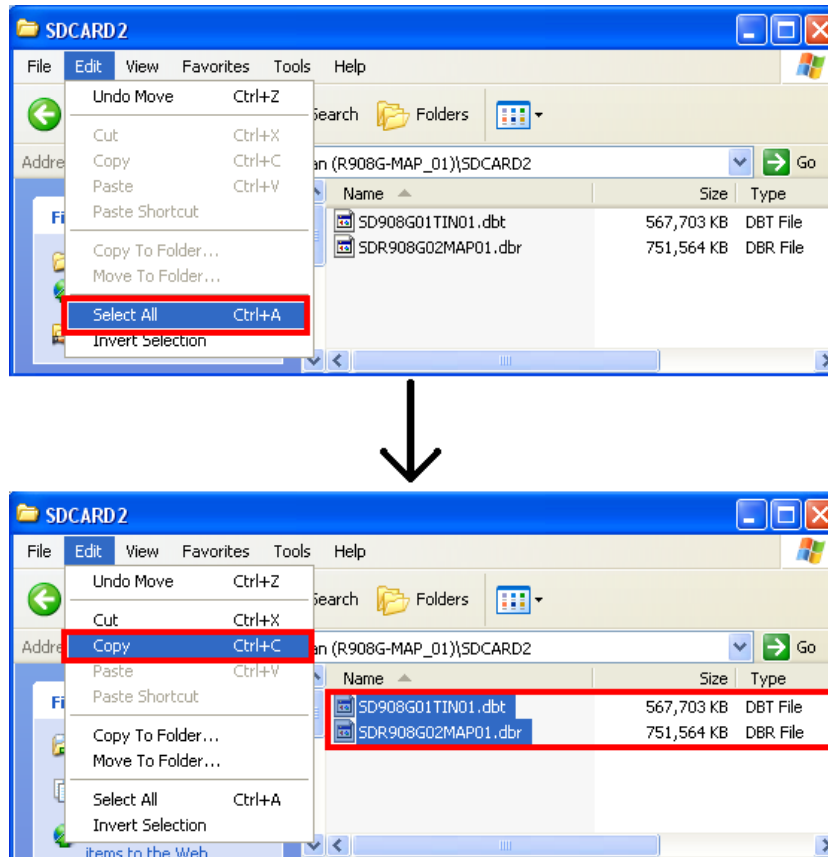


Figure 3.6

*Note: If the folder contains only one file, right click on it and select “Copy” from the menu (See Figure 3.7)*

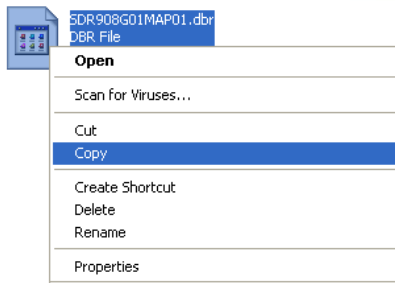
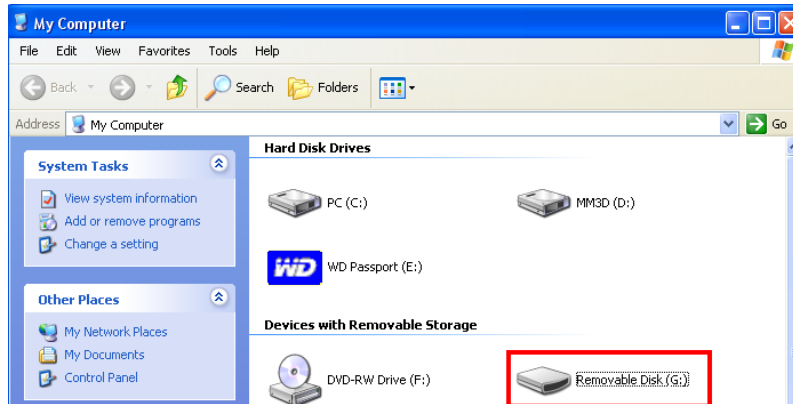


Figure 3.7

Insert a properly formatted SD-card into the SD-Card reader of the computer. If the SD-Card folder doesn't automatically open, follow the instructions below:

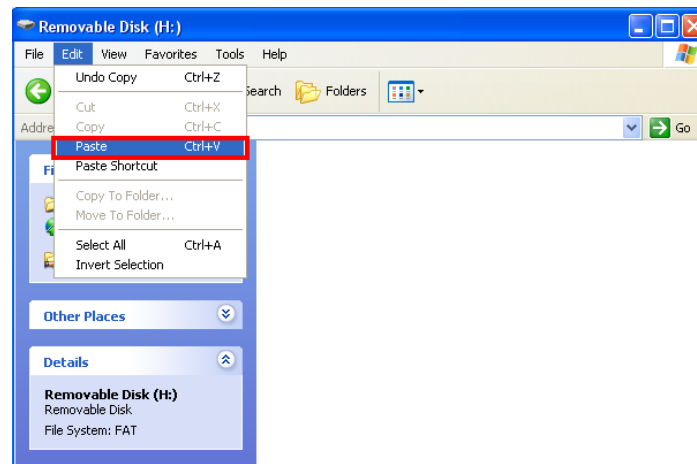
- Click Start and select “My Computer”.
- Double-click on the Removable Disk. The name of your external drive may vary. (See *Figure 3.8*)



*Figure 3.8*

Paste the file(s) at the root of the SD-Card/Flash drive folder (CTRL-V or “Edit” > “Paste”). (See *Figure 3.9*)

Note: All the chart files must be at the root directory of the SD-Card or Flash Drive



*Figure 3.9*

When the transfer is completed, remove the SD-Card or Flash Drive and repeat this process to copy the contents of the other folders (SDCARD2, SDCARD3...) onto other SD-Cards if needed.

Note: To safely remove the external USB hard-drive or the SD-Card, return to the My Computer window, right-click on the SD-Card or external USB hard-drive, then click Eject.

## 4. How to Install New Data onto the MFD

### 4.1. Introduction

When you purchase a Chart Pack, the data (charts, 3D, Sat. Photo) may be split into multiple files that must be loaded onto multiple SD-Cards. Satellite Photos for the U.S. are divided into specific areas, with each area fitting on one SD-Card. On the MFDBB a USB Flash Drive can be used to load multiple areas at the same time. Make sure however to not overload the MFDBB memory. You can simply look at the number of Memory Slots available (Menu -> Chart Catalog) and multiply this value by two. This will give the number of Gigabits that are available in the MFDBB to load charts (ex: if four memory slots are available, you can load up to 8GB of data onto the Flash Drive)

When a Chart Pack is purchased, an Unlock Code will need to be entered after the chart is copied onto the Internal Memory of the MFD.

### 4.2. Transfer Data to the NavNet 3D MFD

Chart Data (Charts, Satellite Photos and 3D data) must be installed on the NavNet 3D MFD's internal memory before it can be used by the Plotter. This process must be repeated on every MFD in the network.

Insert the SD-Card into the upper slot of the MFD on which data is to be loaded. On the MFDBB, you can also connect a USB Flash Drive containing the data you want to load to a USB2.0 port (this will make the transfer much faster). Press the [MENU] key, select the "Chart" page and then select "Data Catalog". Press the "Install Data" button (as seen in *Figure 4.1*).

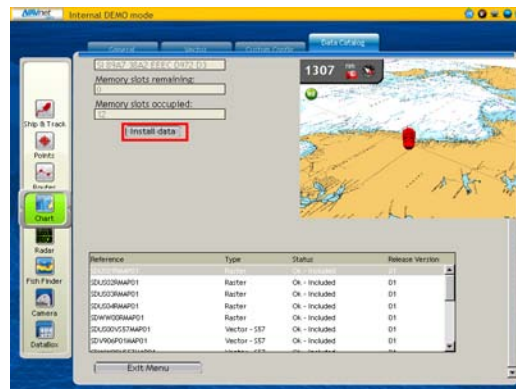


Figure 4.1

Select "Yes" when the following prompt appears (as seen in *Figure 4.2*):

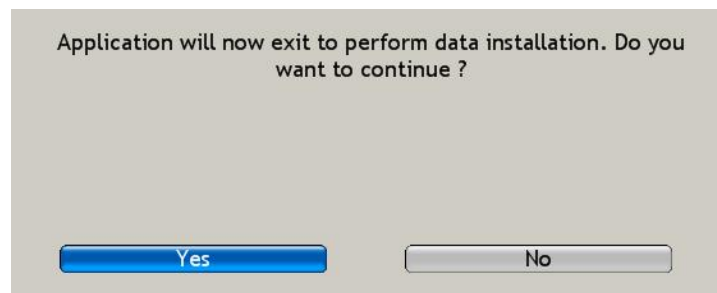


Figure 4.2

The transfer will begin and a window displaying a progress bar will appear (as seen in Figure 4.5).



Figure 4.5

### 4.3. Unlock Chart Data

*Note: Unlock Codes are not necessary for the USA NOAA Data (U.S. Satellite Photos, NOAA S57 Vector Charts or NOAA Raster Charts). This section applies only to Chart Packages that have been purchased.*

Charts not included as standard on the NavNet 3D MFD are encrypted because of royalty payments due to each Hydrographic Office. Unless an Unlock Code is entered, the charts copied into the NavNet 3D MFD cannot be viewed. The chart ordering process is based on SystemID (to identify the customer) and Unlock Codes (provided after purchase to unlock the chart).

The SystemID is required to purchase charts and must be provided when the chart is ordered. In order to access the SystemID, the NavNet 3D network must be set-up and configured properly. Press [MENU] on any NavNet 3D display and turn the RotoKey (clockwise) to select the “My NavNet” menu page. (See Figure 4.6):

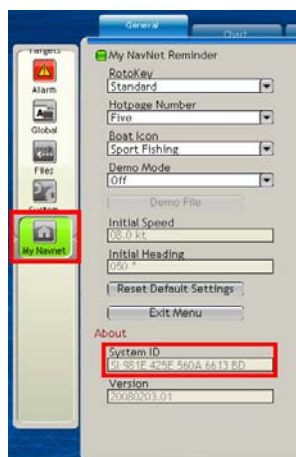


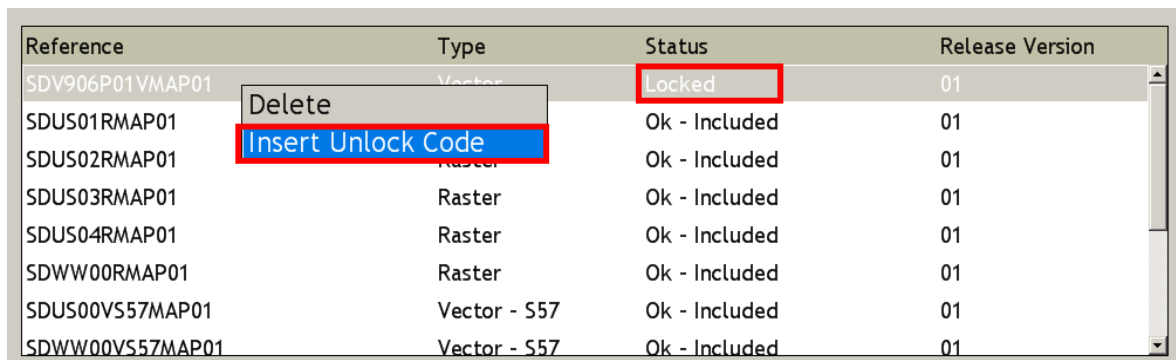
Figure 4.6

Simply order the Chart(s) using the Chart Part Number and the SystemID.

*Note: The Chart Part Number(s) can be found online on the Furuno USA*

An Unlock Code can only authorize one specific area (one Unlock Code per area per type of chart - Raster or Vector). An Unlock Code is linked to a specific SystemID (the same Unlock Code cannot be used to unlock the same area on different systems).

The Unlock Code may be entered at any time from the Chart Catalog. Right Click on the area whose status is “Locked” and choose “Insert Unlock Code” (as seen in *Figure 4.8*)



Reference	Type	Status	Release Version
SDV906P01VMAP01	Vector	Locked	01
SDUS01RMAP01	Raster	Ok - Included	01
SDUS02RMAP01	Raster	Ok - Included	01
SDUS03RMAP01	Raster	Ok - Included	01
SDUS04RMAP01	Raster	Ok - Included	01
SDWW00RMAP01	Raster	Ok - Included	01
SDUS00VS57MAP01	Vector - S57	Ok - Included	01
SDWW00VS57MAP01	Vector - S57	Ok - Included	01

Figure 4.8

Use the RotoKey to enter the Unlock Code:

- Rotate the RotoKey to select your character
- Push the RotoKey to validate the current character and move to the next one
- Press the [CANCEL] key to move back and correct a previous character.

*Note: This operation may also be performed via a mouse and keyboard, if installed*

An automatic process is also available to enter the codes using a file and an SD-Card (avoiding you to type manually all the Unlock Codes on the MFD).

## 5. Memory Availability

### 5.1. Introduction

Every NavNet 3D MFD comes preloaded with the following data for the U.S:

- USA Raster Charts (no Unlock Code required)
  - o SDUS01RMAP03.dbr (US North East)
  - o SDUS02RMAP03.dbr (US South East)
  - o SDUS03RMAP03.dbr (US Gulf Coast)
  - o SDUS04RMAP03.dbr (US Great Lakes)
  - o SDUS05RMAP03.dbr (US West Coast)
  - o SDUS06RMAP03.dbr (US Hawaii)
  - o SDUS07RMAP03.dbr (US South Alaska)
  - o SDUS08RMAP03.dbr (US Aleutian Islands)
- USA Vector Charts (no Unlock Code required)



- SDUS00VS57MAP04.dbv (US East Coast)
  - SDUS01VS57MAP04.dbv (US West Coast)
- USA 3D Bathymetric (no Unlock Code required)
    - SDUS00MAP3D03.dbt (Entire USA)
  - 1 Satellite Photo Areas (no Unlock Code required)
    - SDUS22SAT01.dba (Miami and the Keys)
  - 3 C-MAP by Jeppesen areas
    - SDVJNAM022MAP01.dbv = Jeppesen Charts for East Coast and Bahamas
    - SDVJNAM023MAP01.dbv = Jeppesen Charts for Gulf and Rivers
    - SDVJNAM024MAP01.dbv = Jeppesen Charts for West Coast and Baja

You can remove some of the preloaded data to free up memory slots.  
 For example, if you are boating on the East Coast only, you can remove:

- SDUS04RMAP02.dbr (US Great Lakes)
- SDUS05RMAP02.dbr (US West Coast)
- SDUS06RMAP02.dbr (US Hawaii)
- SDUS07RMAP02.dbr (US South Alaska)
- SDUS08RMAP02.dbr (US Aleutian Islands)

This will free 4 memory slots that will become available for additional data.

## 5.2. Deleting Data

Press the [MENU] key, select the “Chart” page and select the “Data Catalog”. Right click on the Data you want to remove, or select the data and push the RotoKey (as seen in *Figure 5.1*).

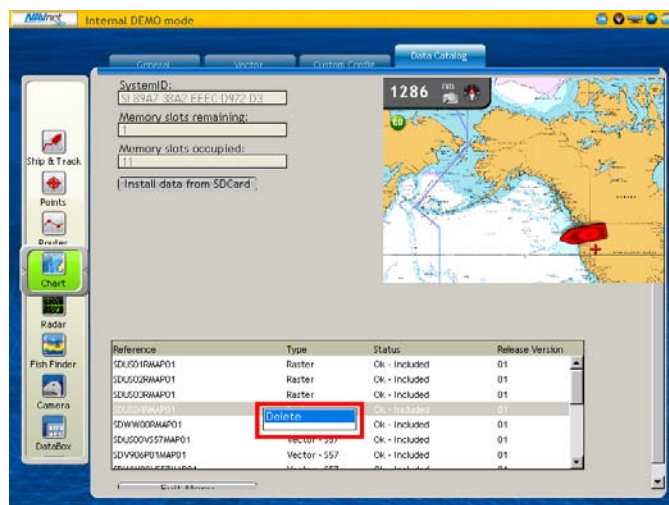


Figure 5.1

A confirmation window will appear (as seen in *Figure 5.2*).

**Warning:** This operation cannot be cancelled. Make sure you are removing the correct files before confirming. If purchased chart data is deleted by mistake, you can re-load the charts using an SD-Card and the original Unlock Code(s).



Figure 5.2

Note: If you deleted the wrong area by mistake, you can download this data from the Mapmedia website.

## 6. Appendix

### 6.1. How to Format an SD-Card

#### 6.1.1. Introduction

SD-Cards must be formatted properly before transferring files to them for use with NavNet 3D.

You can use the default function of Windows (Vista/XP or 2000) however we highly recommend you use a formatting program that complies with the SD Memory Card specification.

#### 6.1.2. Format an SD-Card Using Software (recommended)

Download and Install the formatting software

Once the software is installed, insert the 2GB SD-Card you want to format and launch “SDFormatter” (Start > All Programs > Panasonic > SDFormatter V2.0). The Drive Letter of the SD-Card should automatically be selected (click “Refresh if not”). (see *Figure 6.1*)

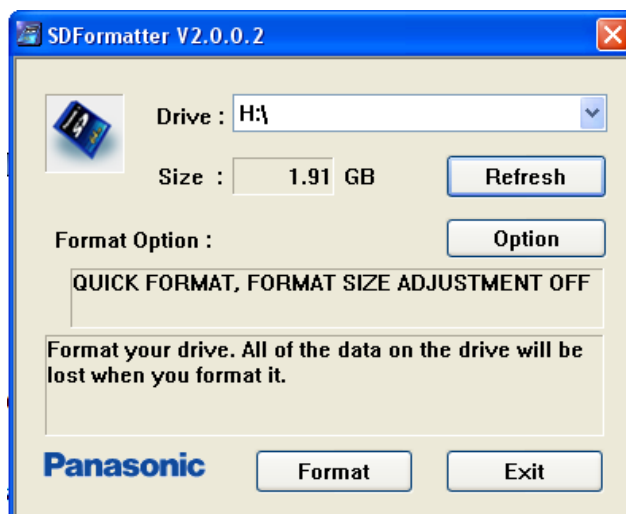


Figure 6.1

Leave all of the options on the default settings and click on “Format”. A confirmation message will appear upon completion (see *Figure 6.2*)

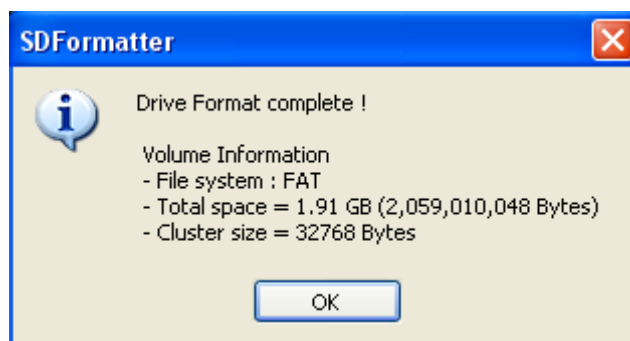


Figure 6.2

### 6.1.3. Format an SD-Card Using Windows

Insert the SD-Card into the SD-Card reader of the computer. If the SD-Card folder automatically opens, close it. Click Start and select “My Computer”. Right-click on the Removable Disk and choose “Format...” (see *Figure 6.3*). The name of your removable drive may vary.

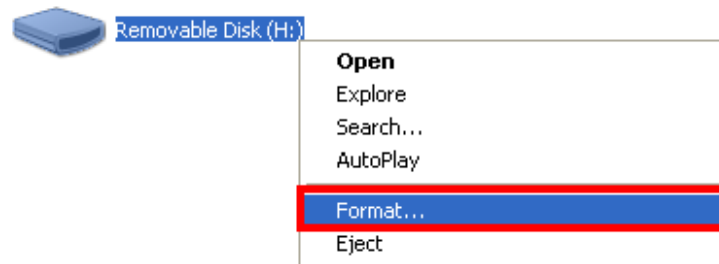


Figure 6.3

Select “FAT” and “Quick Format” then click on “Start” (see *Figure 6.4*)

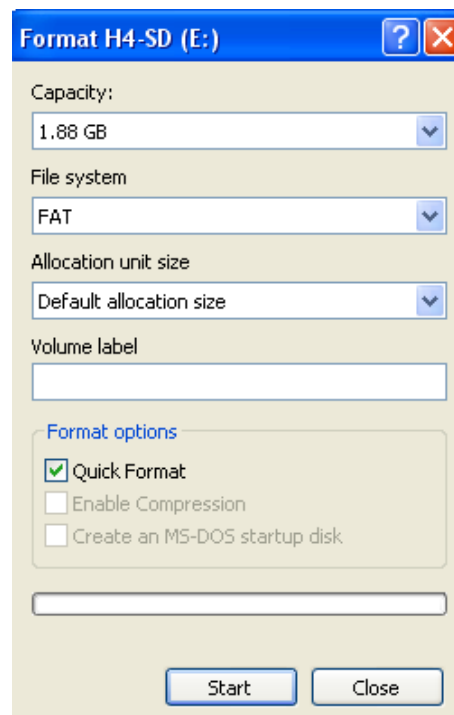


Figure 6.4

## 6.2. How to format a USB Jump Drive

Insert the USB Flash Drive into the USB2.0 port of the computer. If the Flash Drive folder automatically opens, close it. Click Start and select “My Computer”. Right-click on the Removable Disk and choose “Format...” (see *Figure 6.5*). The name of your removable drive may vary.

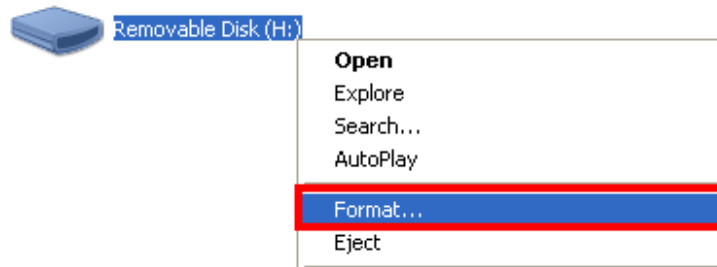


Figure 6.5

Select “FAT32” and “Quick Format” then click on “Start” (see Figure 6.6)

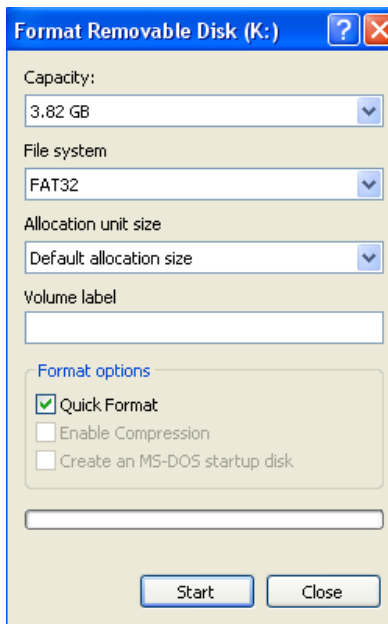


Figure 6.6

### 6.3. Recommended SD-Card

Furuno USA offers compatible 2GB SD cards (part number SD1-BNK-003). If you are purchasing blank SD cards from an alternate source, we strongly recommend you use only 2GB SanDisk SD-Cards, as they have been tested by Furuno USA for transferring data to NavNet 3D.