

# FURUNO



# NAVnet

*TZ2*  
touch

## The World's First MFD with ActiveCaptain POI

1. What is ActiveCaptain?
2. Getting Ready for ActiveCaptain
  - 2-1 Registering ActiveCaptain
  - 2-2 Installing POI Database
  - 2-3 Activating ActiveCaptain Account
  - 2-4 Updating ActiveCaptain Database
3. Utilizing ActiveCaptain POI
  - 3-1 Showing ActiveCaptain POI Icon
  - 3-2 Showing ActiveCaptain POI Details
  - 3-3 Uploading Rates and Comments
  - 3-4 Finding Marinas

# 1. What is ActiveCaptain?

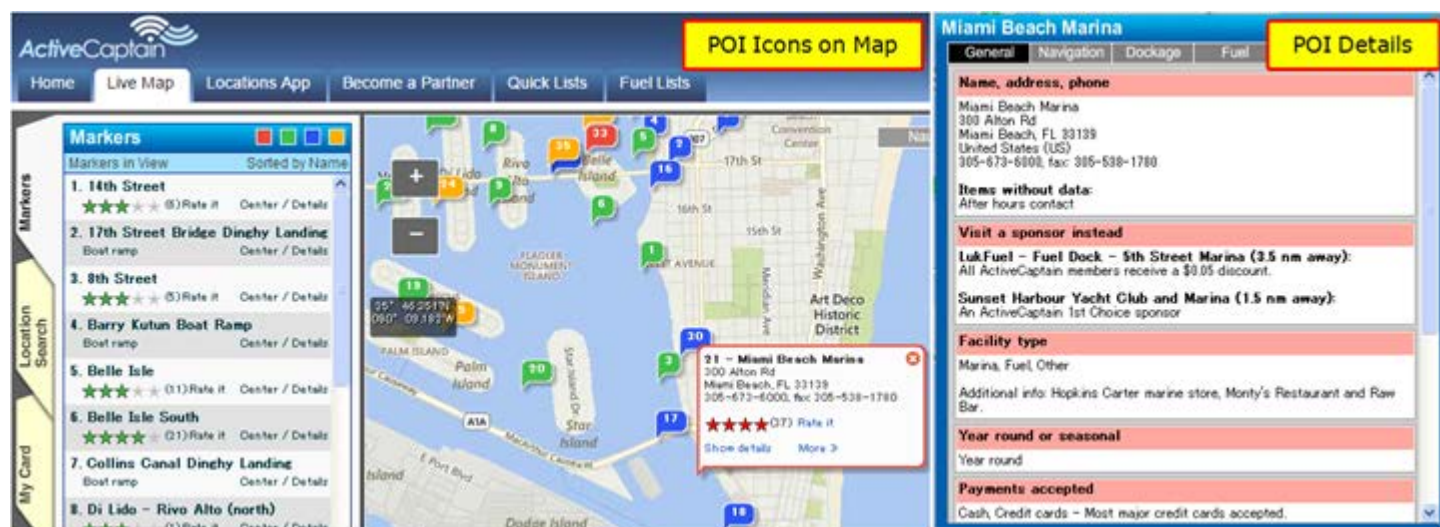
**ActiveCaptain** is the world's largest Interactive Cruising Guidebook with a large amount of **POI (points of interest)** data in the database. Boaters can share their experience together with other boaters around the world, as well as browse and discover new points of interest. As of now, **250,000 users** and **50,000 points** are registered and the numbers are increasing. The POI's consist of **marina**, **anchorage**, **local knowledge** (marine store, bridge, etc.), and **hazard** information. These points are **up-to-date** and **rated** or **commented** on by users. In addition to private boaters, public organizations have been utilizing the ActiveCaptain database as a part of their activities.



**NavNet TZtouch2** is the world's first MFD with ActiveCaptain. TZTL12F/15F v3.01 offers unique features utilizing the ActiveCaptain database. In addition to the capacity of up to 30,000 user points, which you can enter on the TZTL12F/15F, you have an access to over 50,000 POIs from ActiveCaptain.



## ActiveCaptain Website and POI Types



### POI Types

No	Categories	Color	Descriptions
1	Marinas	Red	Location of marinas and related facilities
2	Anchorage	Green	Location where you can anchor
3	Local Knowledge	Blue	Location of marine shops, bridges, etc.
4	Hazards	Yellow	Location with hazard information

## 2. Getting Ready for ActiveCaptain

### 2-1 Registering ActiveCaptain User Account

First, create your ActiveCaptain account. The process is quite easy.



The screenshot shows the ActiveCaptain website's registration page. At the top, there's a navigation bar with links for Home, Live Map, Locations App, Become a Partner, Quick Lists, and Fuel Lists. Below this is a header for "Register a new captain account". The main content area contains a registration form with the following fields: "Your email:", "Re-type email:", "Password:", "Re-type password:", "Captain name:", "Home port:", "First name:", and "Last name:". There are also two checkboxes: "Subscribe to newsletter" (checked) and "I agree to Active's Terms of Use". A "Submit Registration" button is at the bottom of the form.

### 2-2 Installing the POI Database on NavNet TZtouch2

The basic ActiveCaptain POI database will be installed with all TZTL12F/15F shipped with software v3.01. **For TZTL12F/15F units with v2.05 or earlier, the POI database can be installed in the field. Install the POI file into any TZtouch2 that you would like to view the information on.** (See separate POI installation document and video found on the individual TZtouch2 product pages for the installation procedures.) Once the basic database is installed, it can be updated via the Internet as shown in **Section 2-4**.

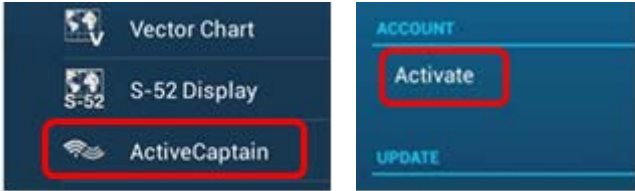
### 2-3 Activating ActiveCaptain Account on NavNet TZtouch2

Once the ActiveCaptain account is created, activate your account on the TZTL12F/15F.

(1) Connect the TZTL12F/15F to the Internet.



(2) Access [Home] – [Settings] – [General] – [ActiveCaptain] and tap [Activate].



**Note:**  
Without an Internet connection, you **CANNOT** activate the account.

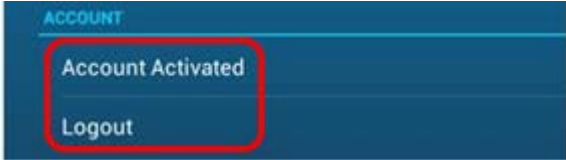
[Wireless] – [OFF]:  
[Activate] grayed out



(3) Enter the account information, i.e. your e-mail address and password and tap [Ok].



(4) After the account is activated, confirm that the status is shown as [Account Activated]. When logging in with another account, tap [Logout].

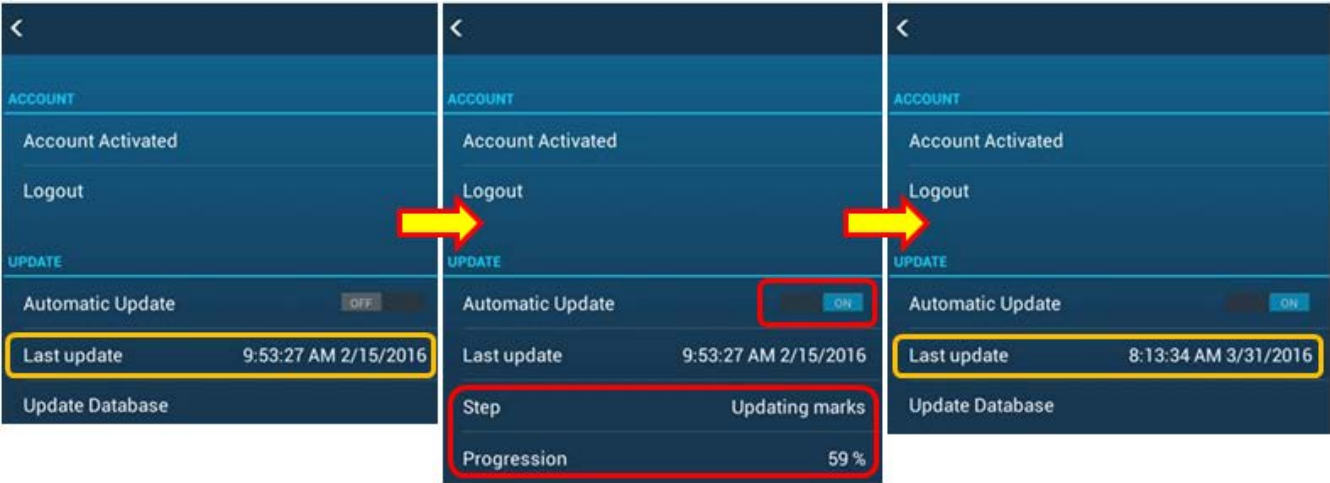


**Note:**  
The activated account information will be shared between the TZTL12F/15F units in the network.

## 2-4 Updating ActiveCaptain Database on NavNet TZtouch2

The POI database can be updated if required, by connecting to the Internet. Any differences between the basic database (See **Section 2-1**) and the latest one will be updated.

- (1) Connect the TZTL12F/15F to the Internet.
- (2) Access [Home] – [Settings] – [General] – [ActiveCaptain] and set [Automatic Update] to [ON].
- (3) See the progress and the date after update.



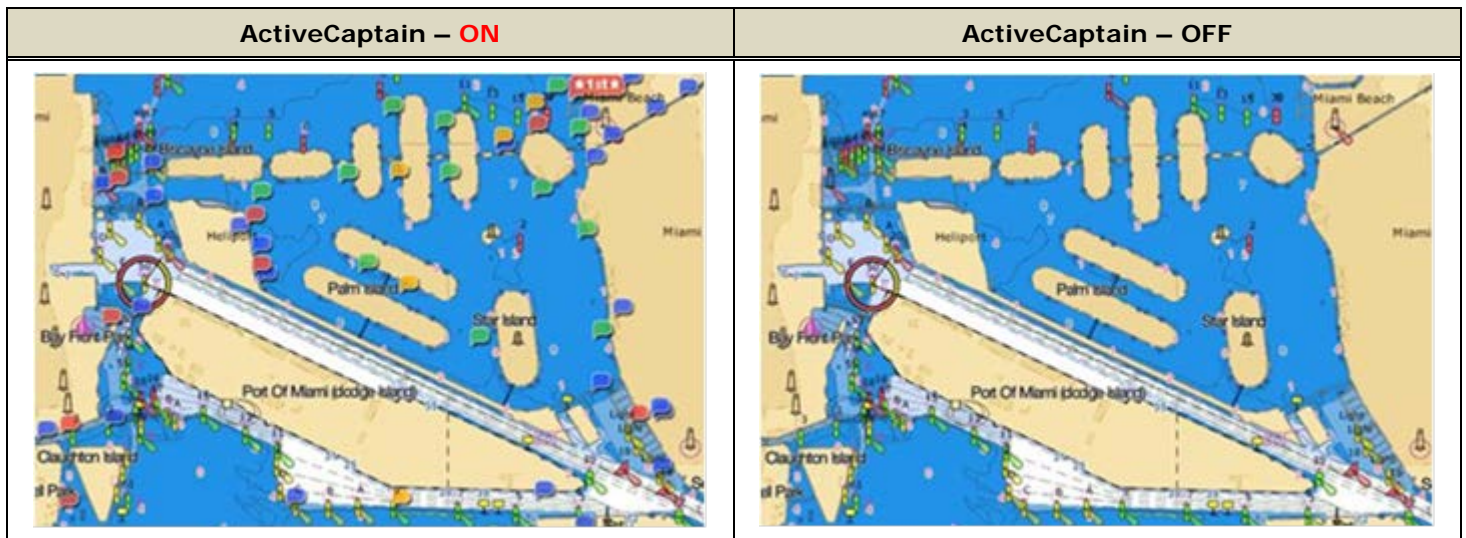
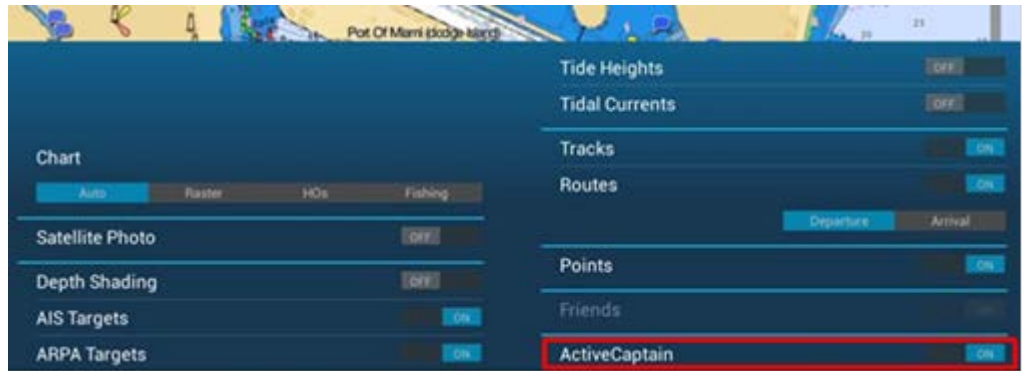
# 3. Utilizing ActiveCaptain POI

Once the ActiveCaptain database is installed and your account is activated on the TZTL12F/15F, you can make use of ActiveCaptain even while offline.

## 3-1 Showing ActiveCaptain POI Icon

You can overlay ActiveCaptain POI icons on the chart screen.

Edgeswipe from the bottom to show the Layer window and turn [ActiveCaptain] to [ON].



## Icon Types

As described in Section 1, four (4) categories of POI are shown in different icon colors.

ActiveCaptain Menu	Categories	Icons	Descriptions
	Marinas		Location of marinas and related facilities
	Anchorage		Locations where you can anchor
	Local Knowledge		Location of marine shops, bridges, etc.
	Hazards		Locations with hazard information

## Information On/Off Setting

On/off setting of each category and information type can be set in the menu.

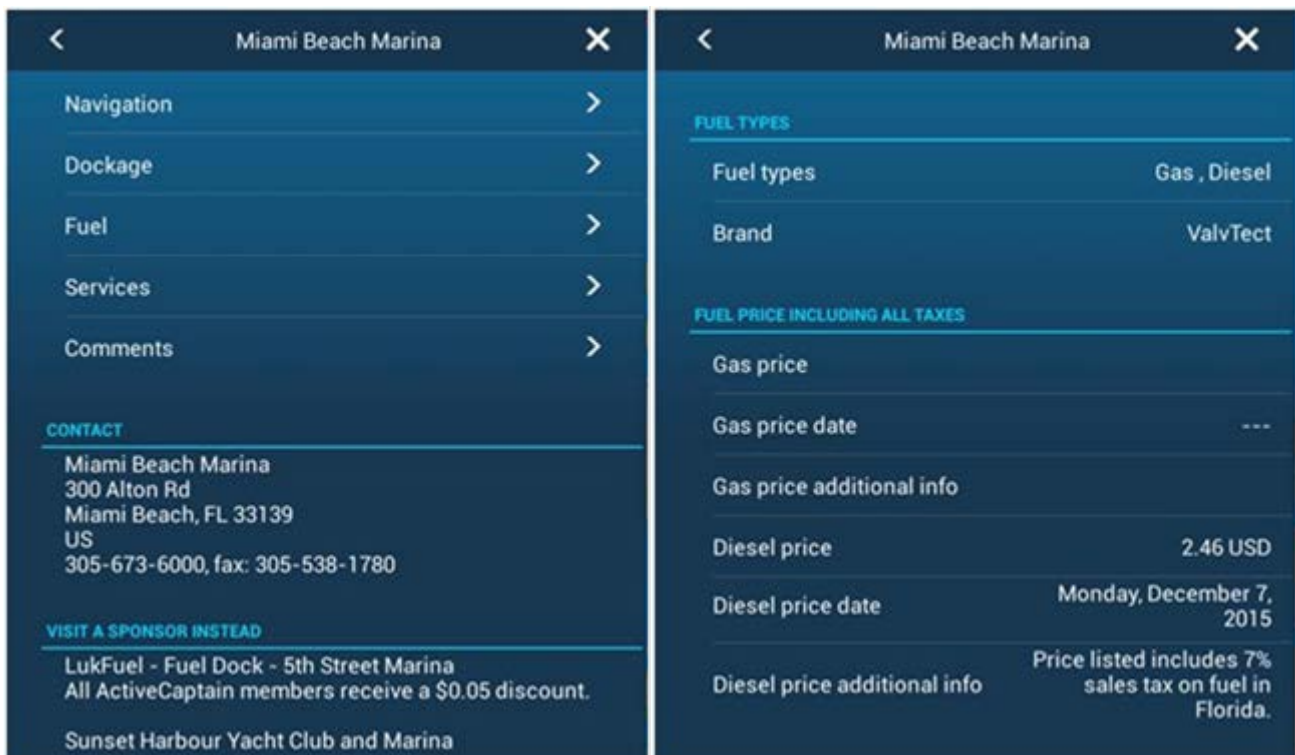


## 3-2 Showing ActiveCaptain POI Details

When you tap one of the POI icons, a brief information window appears. Additional details can be shown in a half screen by tapping [Show Details].



### Sample of POI Details from Miami Beach Marina



### Note:

The detailed page will **NOT** be available if the account is not activated on the TZTL12F/15F.

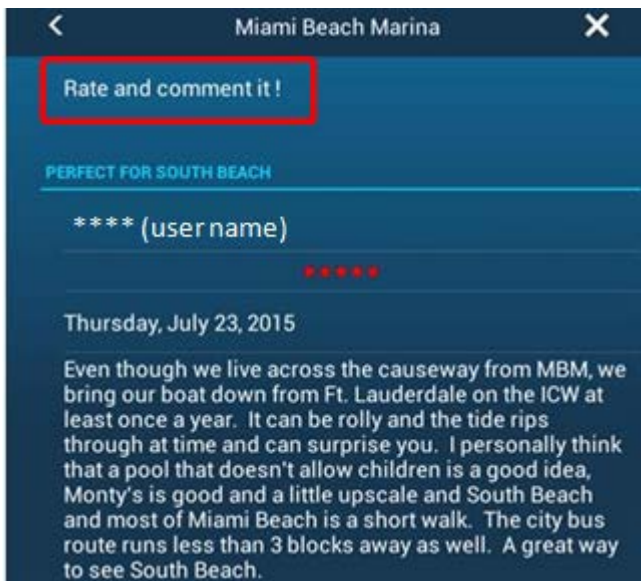
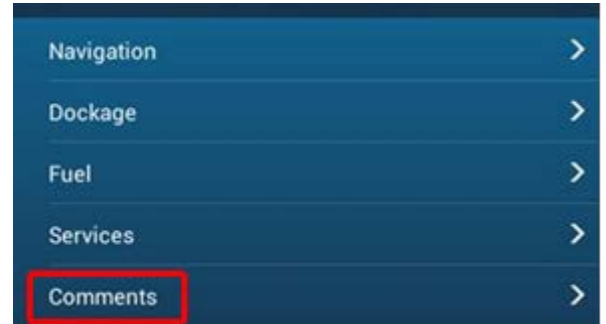


### 3-3 Uploading Rates and Comments

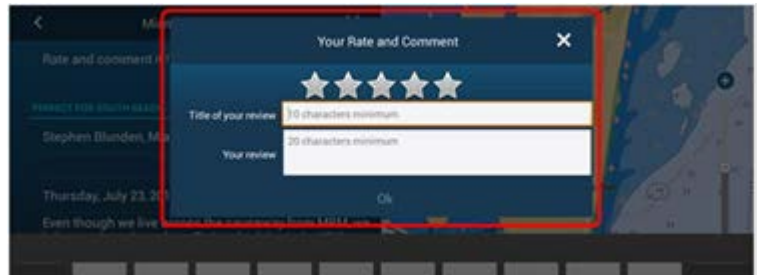
You can see the latest rates and comments to review the selected POI and upload your rate and comment from the TZTL12F/15F via the Internet.

#### Reviewing Rates and Comments

Open the detailed page of the selected POI and tap **[Comments]**.  
All uploaded comments will be shown on the screen.



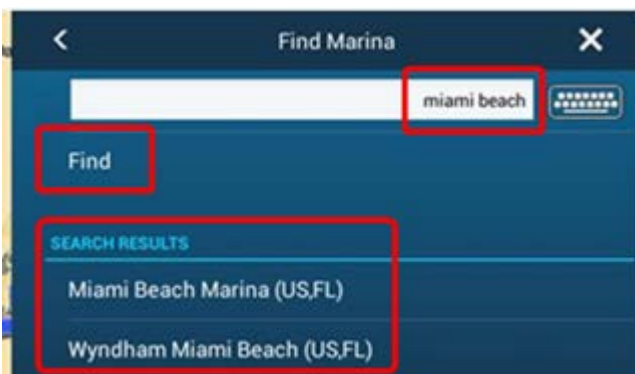
To upload your rate and comment, connect the TZTL12F/15F to the Internet and tap **[Rate and comment it!]**.



### 3-4 Finding Marinas

You can search a registered point on the TZTL12F/15F.  
In this example, Miami Beach Marina will be searched.

(1) Show the universal setting options by edge swiping the screen from the right edge to the left side, and tap **[Find Marina]**.



(2) Enter the marina name partially and tap **[Find]**.

(3) After the search result is shown, select one of the required marinas.

The screen will move to the selected marina as shown at right.

**Note:**  
Only the **English alphabet** is supported for a search.



--- END ---

- All brand and product names are registered trademarks, trademarks or service marks of their respective holders.