



Gary
YAMAMOTO
Custom Baits



2017 CATALOG

The new Zako Swimbait was designed by Elite angler Brett Hite, and it's his bait of choice as a swimbait trailer when he's slinging chatterbaits or he's in the mood to flip.

"I wanted a lure to mimic a bluegill or a shad, but I wanted a fish profile with a bigger belly. It needed to be beefy enough to hold a hook or jig," says Elite Angler Brett Hite, who finished 2nd this year at Winyah Bay primarily fishing the Zako.

Additionally, Brett wanted to keep the tail action tight, similar to an actual baitfish, so we designed the tail with accordion-style cuts and a flanged tail which keeps the action minimal. Hookset ratios are also improved as the tail folds in on itself when the fish bite.

Another key feature of the Zako which is exceptionally useful when rigging it as a flip bait is the center line on the top of the bait - you'll always know you're rigging it dead center and that means the Zako will always run true."



134-06-991

4" Zako Swimbait
(134-06-color)



Photo by James Overstreet.



Photo by James Overstreet.



Photo by James Overstreet.



021
Black w/ blue flake



036
Cream White



194J
Fading Watermelon
Pepper



297
Pumpkin Pepper



375
Disco Green



906
Watermelon/Lemon
lamine



909
Chartreuse Shad



929
Green Pumpkin/Lemon
lamine



956
Watermelon w/ copper
/ Orange w/ red
lamine



973
Electric Shad



981
Green Pumpkin/White
lamine



991
021/297
lamine



992
Rainbow Shad



993
Sight Flash



994
Tennessee Shad



Sanshouo®

"Our goal with The Sanshouo was to produce a bait that wasn't just another copy of any existing style. We needed a product that could be flipped, pitched and punched, rigged on a Carolina rig, Texas rig or fished on a swing head or a football head -- something that would excel throughout the water column. This can be fished really deep but it can also be flipped shallow or used to sight fish with. It's extremely compact, yet produces a heavy duty action all its own.

The Sanshouo conceptualized by Western Pro Bub Tosh, Jr., is fashioned to resemble a water-dog, a sculpin, a goby or a bluegill - with a distinct profile that fish don't see all of the time. We feel we've designed a bait that will work equally whether you're on Lake Erie fishing for trophy smallmouth, at Okeechobee punching heavy mats, or sight fishing and flipping in California. This will become your go-to bait and with a range of colors it'll work in any water clarity under a variety of conditions - try it on a chatterbait when you want your bladed jig to have more vibration than with a more subtle slotted bait, or put it on the back of a swim jig, but we think it's often best fished all by itself."

133-06-297



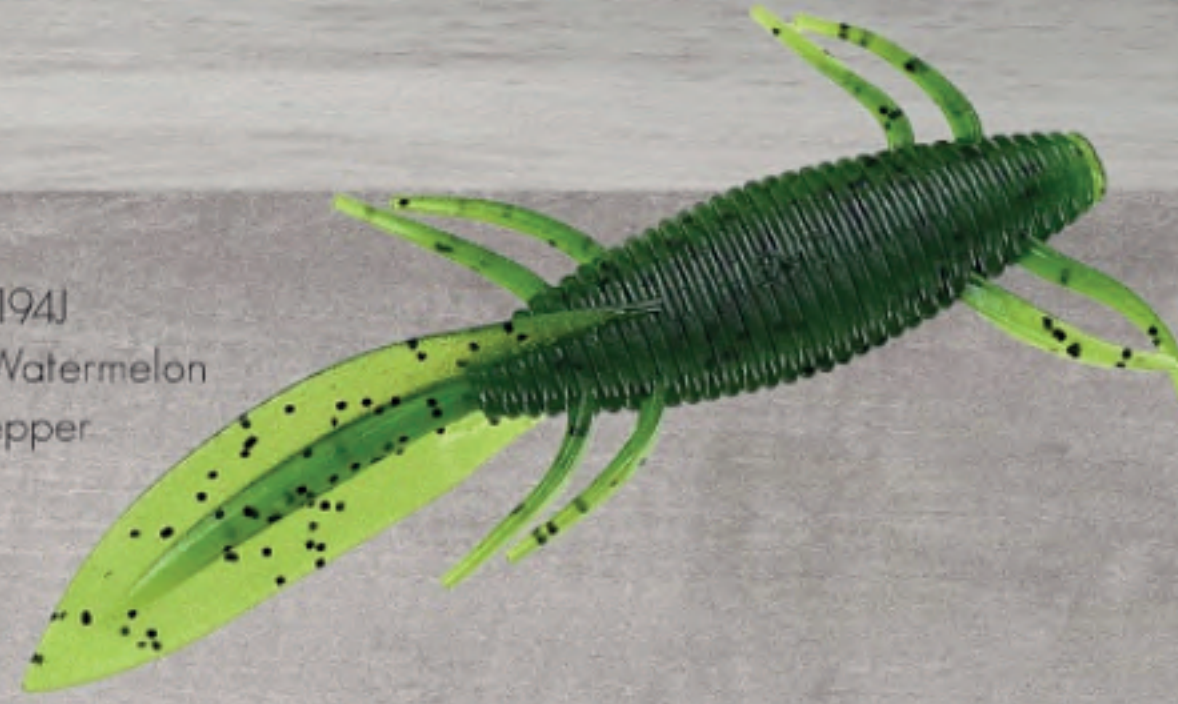
5" Sanshouo Salamander (133-06-color)



021
Black w/ blue flake



194J
Fading Watermelon
Pepper



208
Watermelon w/ black
and red flake



297
Green Pepper



301
Green Pumpkin w/
large black & purple



330
Green Pumpkin w/
purple & small copper



335
Blue w/ light blue flake



925
Green Pumpkin w/
small red / 042J lam



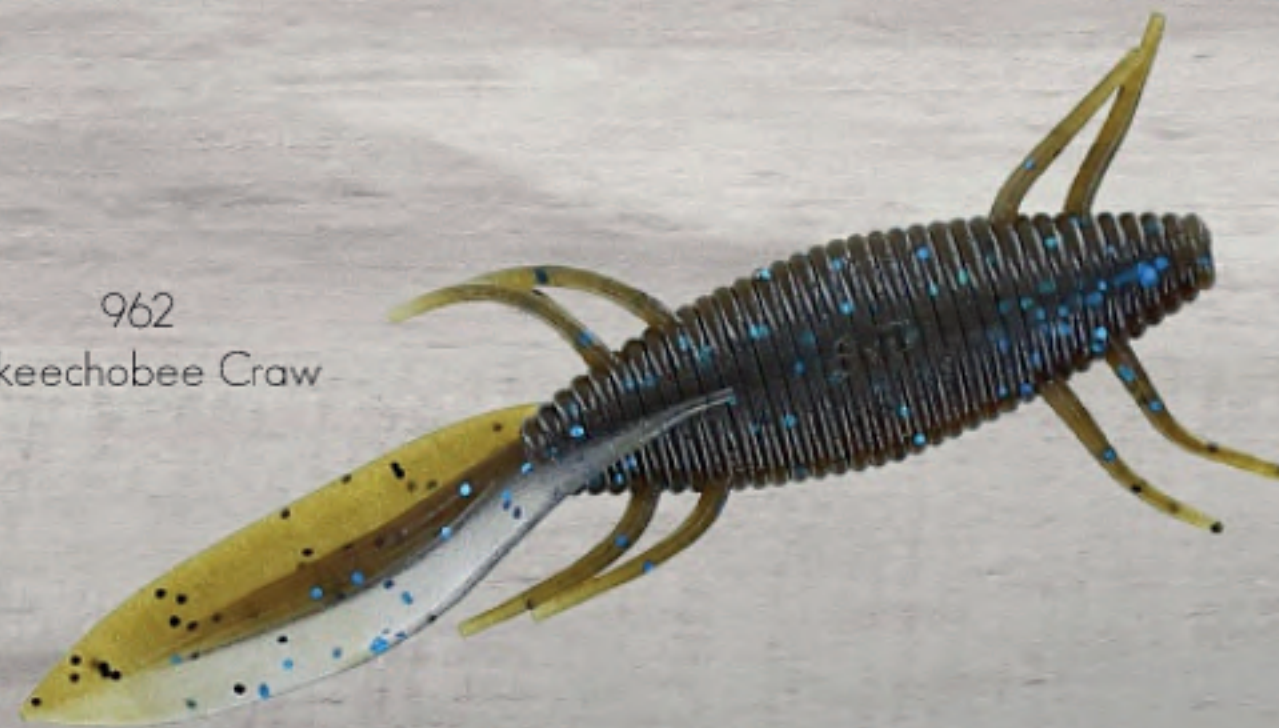
956
Dk Green Pump w/ purple, blk,
sm emerald / transparent amber



955
Watermelon Black w/
sm red / light Water-
melon w/ blk & red



962
Okeechobee Craw



995
021 / 238 laminate



When Gary Yamamoto designed the Senko in the early 90's, he had no idea he was changing the future of fishing. Now it seems that every company has a similar "do nothing" copy of GYCB's creation, but none have figured out how to make one quite as effective as the original. Over the ensuing period of time, the original Senko, available in three-, four-, five-, six- and seven-inch sizes, has been bolstered with two-tone and laminate models and joined by the Slim Senko, the "Thin" Senko, the Pro Senko and the Swimming Senko. There's a Senko in the lineup for every possible application and for every angler, from the first-timer to the four-level pro. Whether you fish it weightless, wacky-style, Texas-rigged, on a Carolina rig, or on a shakey head or flipping jig, this simple slab of plastic will revolutionize your game and increase your catches. *SEE FULL COLOR DESCRIPTIONS IN OUR COLOR CHART, pg. 23-24



1. 7-inch Senko® (9X-05-color)

Colors: 021, 036, 051, 194J, 208, 213, 297, 301, 305, 330, 337, 925

2. 6-inch Senko® (9L-05-color)

Colors: 020, 021, 036, 051, 156, 194J, 208, 213, 214, 222, 231, 236, 297, 301, 302, 305, 306, 318, 323, 330, 337, 912, 925

3. 5-inch Senko® (9-10-color)

Colors: See all available Senko "color swatches" on this page.

4. 4-inch Senko® (9S-10-color)

Colors: 009, 020, 021, 031, 036, 042, 150, 157, 159, 169, 194, 194J, 196, 208, 213, 214, 221, 222, 229, 234, 236, 239, 241, 297, 301, 305, 306, 323, 329, 330, 354, 355, 357, 361, 375, 376, 392, 397, 398, 399, 900, 901, 904, 906, 908, 909, 912, 925, 926, 927, 953, 955, 956, 958, 963, 964, 967, 968, 379, 980, 981, 983, 984, 990, 996

5. 3-inch Fat Senko® (9C-10-color)

Colors: 020, 194J, 196, 208, 297, 301, 328, 330, 909, 990

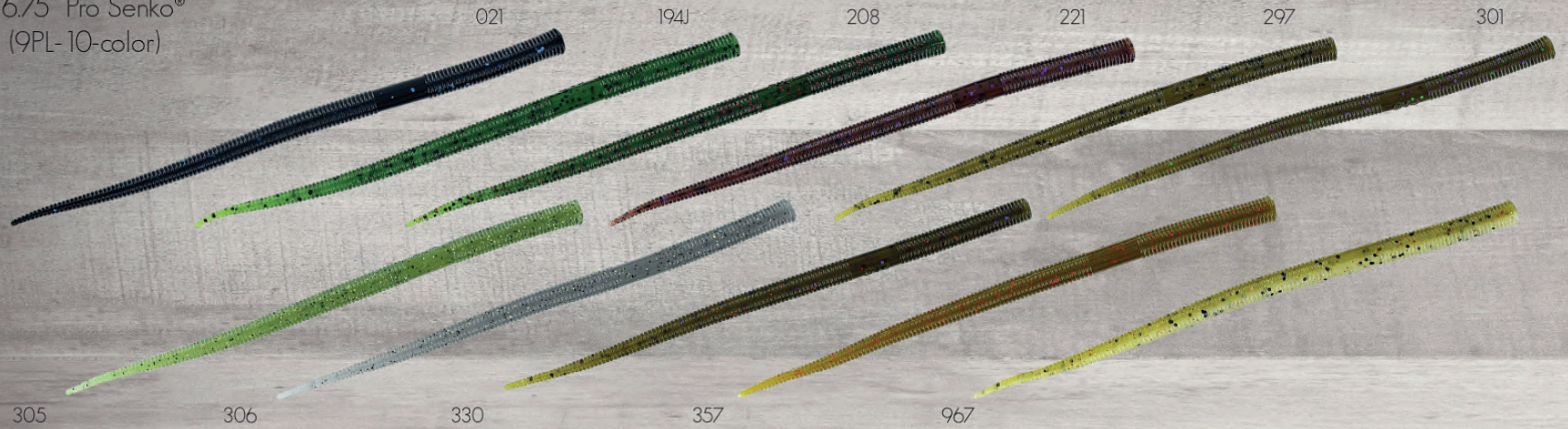




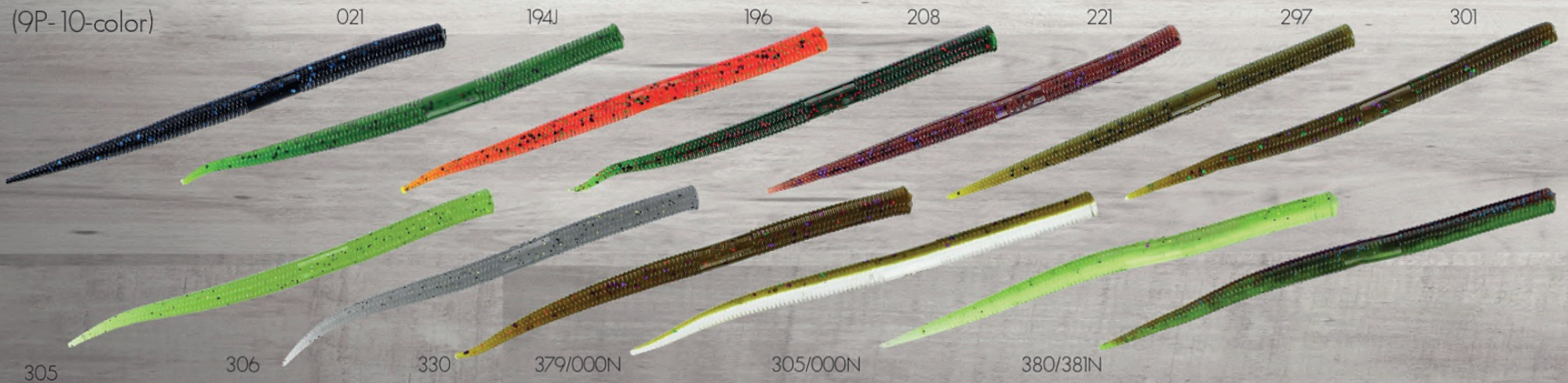
Thin/Slim Senkos®

Slimmer versions of the original, these Senkos are designed for finesse applications. Drop-shot anyone?

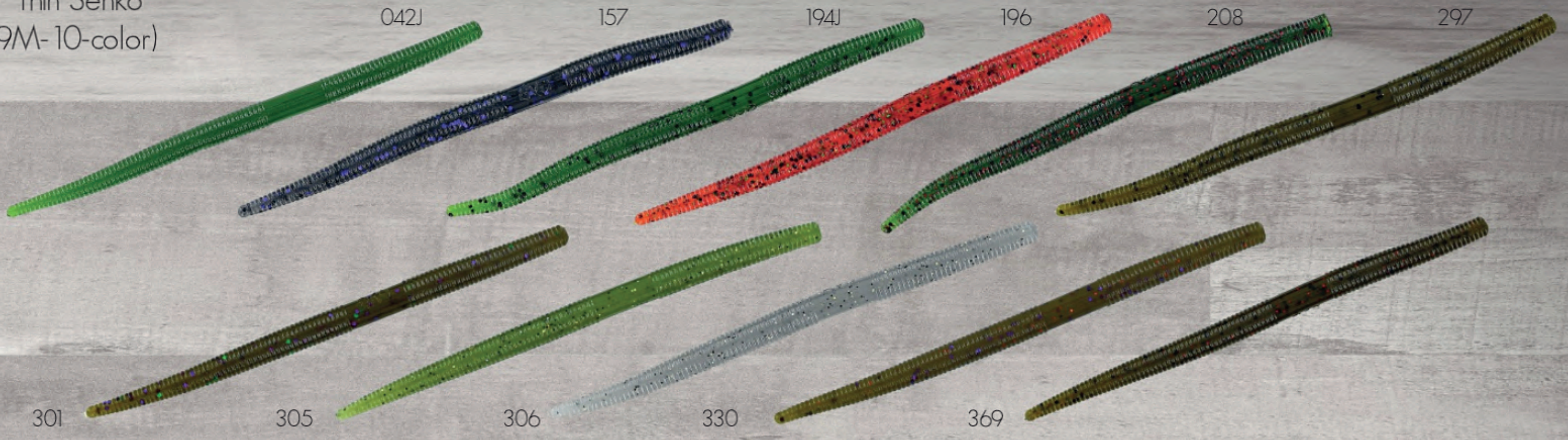
6.75" Pro Senko®
(9PL-10-color)



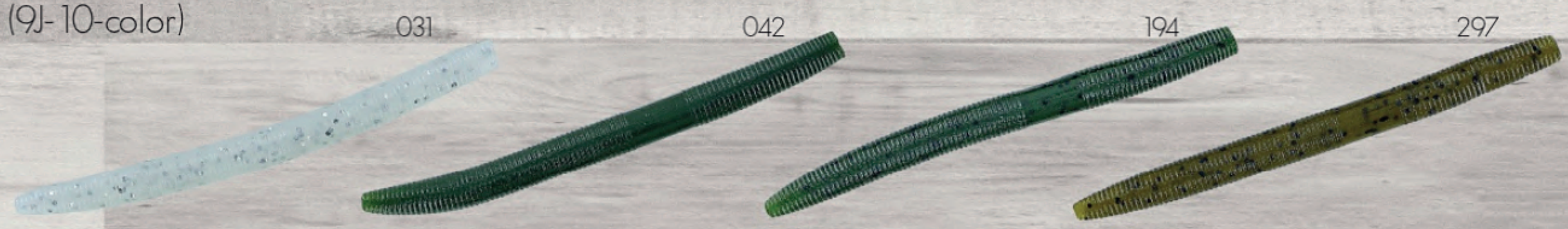
5" Pro Senko®
(9P-10-color)



5" Thin Senko®
(9M-10-color)



4" Slim Senko®
(9J-10-color)



3" Slim Senko® (9B-10-color)



Kut-Tail® Worms

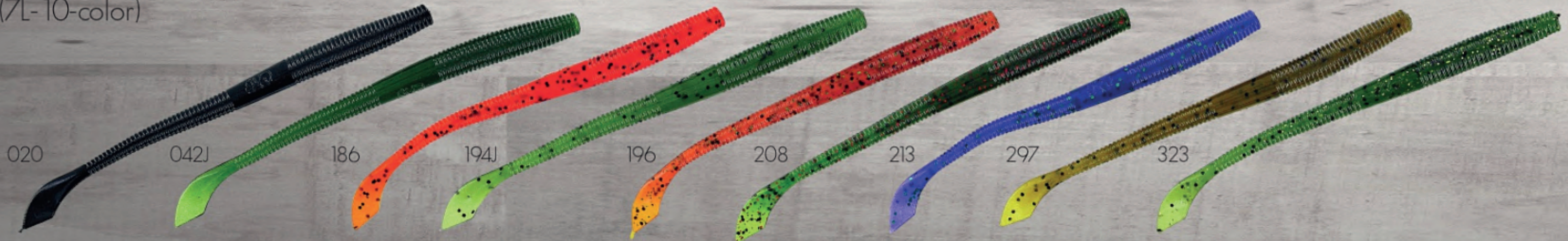
7.75" Kut Tail®
(7GL-05-color)



When it comes to finesse baits the Yamamoto Kut Tail worm has all the features you need to fool those finicky fish. The unique tail design produces a subtle action perfect for finesse fishing techniques like drop-shotting. The tapered body design provides maximum action and durability.



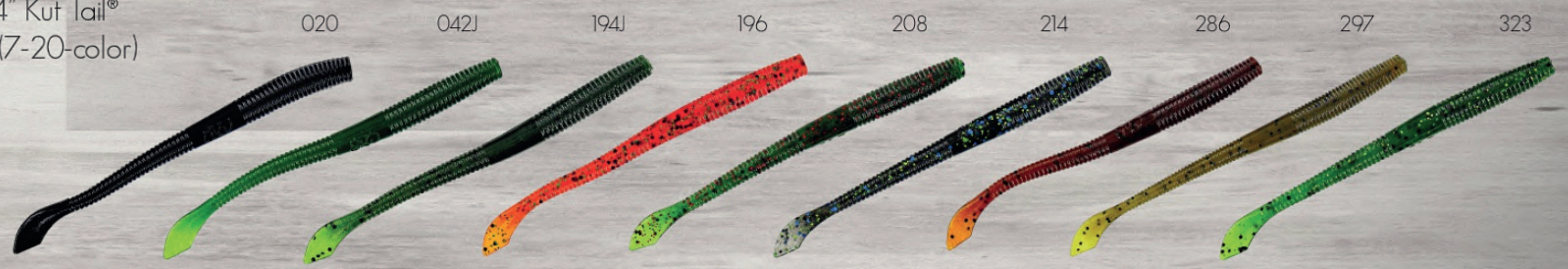
5" Kut Tail®
(7L-10-color)



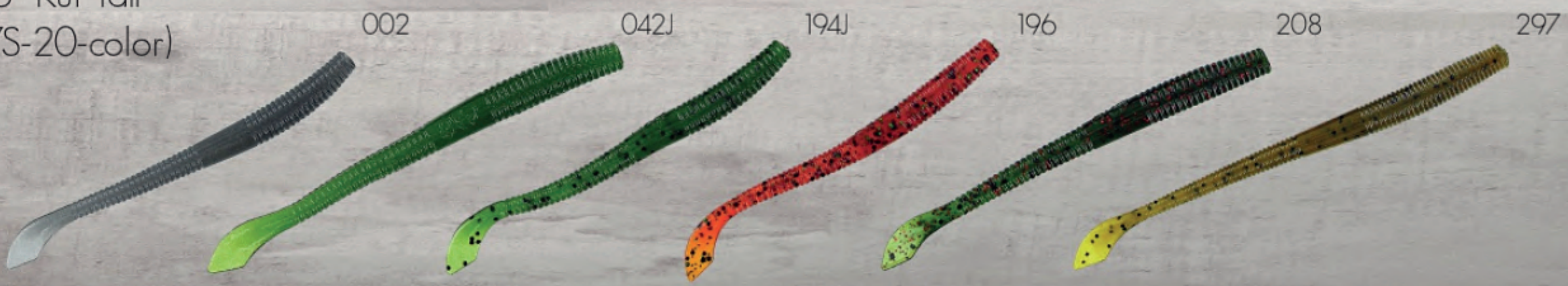
6.5" Kut Tail®
(7X-10-color)



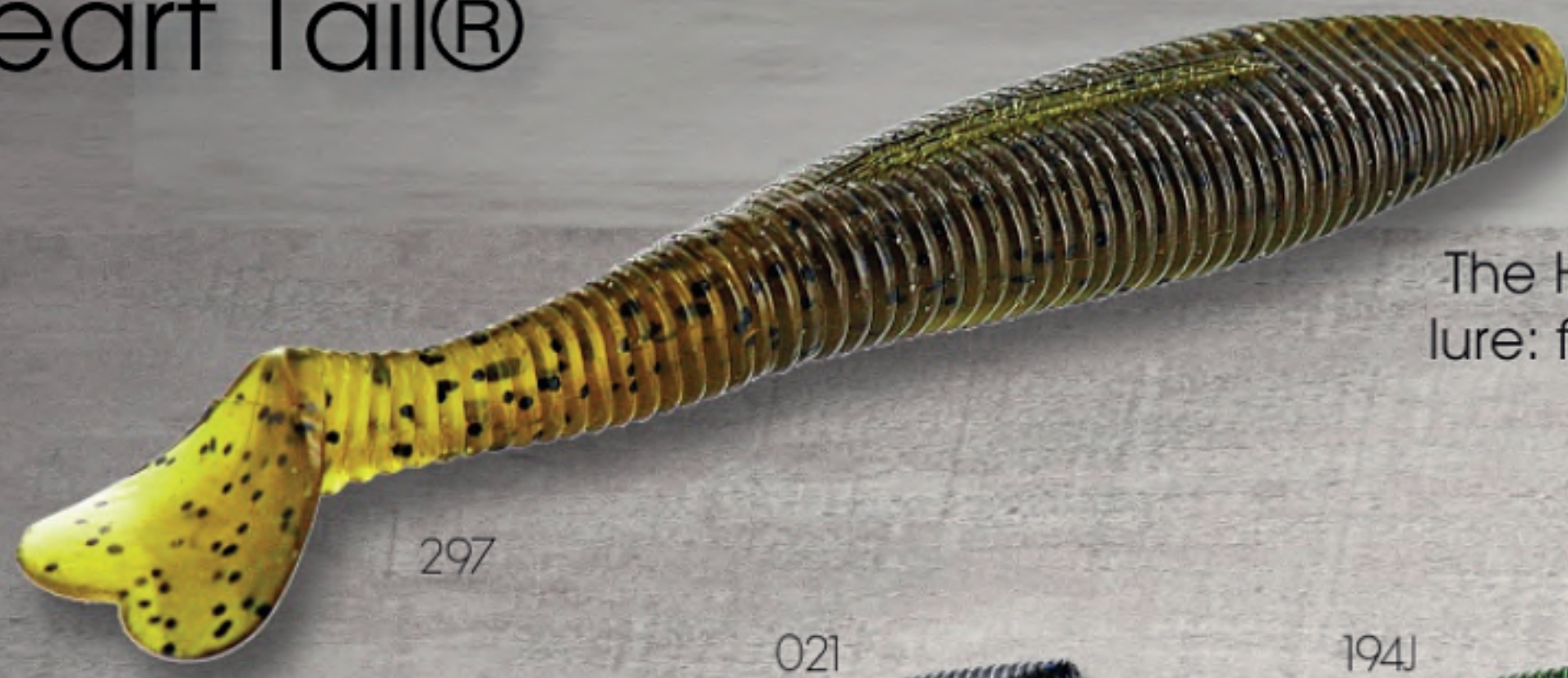
4" Kut Tail®
(7-20-color)



3.5" Kut Tail®
(7S-20-color)



Heart Tail®



4.5" Heart Tail (128-05-color)

The Heart Tail, with its unique, heart-shaped paddle tail, is a very versatile style of lure: fish it deep on a jighead, swim it Texas-rigged in the grass, or on the back of a swim jig or chatterbait. It's extra-large hook cavity was designed for better hook penetration.

297

021

194J

208

341N/000

364

947

948

967

968

Shad Shape Worm®



3.75" Shad Shape Worm (68L-10-color)

A favorite of touring pro Shinichi Fukae, the Shad Shape worm on a drop-shot setup has produced two wins for him on Lake Champlain!

967

031

150

176

177

194

208

214

215

297

301

305

306

318

323

330

901

912

925

935

938

939

967

968

Cali-Roll®

Spade Tail Worm

5" Cali-Roll (130-10-color)

14



With its uniquely-shaped tail, the Cali-Roll moves a great deal of water, creating an amazing, fish-enticing action. Rig it on a darter head or swim it nail-weighted or wacky style. Available in our top-10 fish-catching colors!

Yama-Frog®

3.5" Yama Frog (129-05-color)

The Yama Frog glides easily on the surface of the water with an extreme kicking action even at the slowest speeds. The perfect solution for buzzing over tops of grassbeds and around heavy cover. The deep hook cavity in the body ensures good hook-up ratios and will accept the largest heavy-wire EWG hooks.



D-Shad®



5" D-Shad (121-07-color)

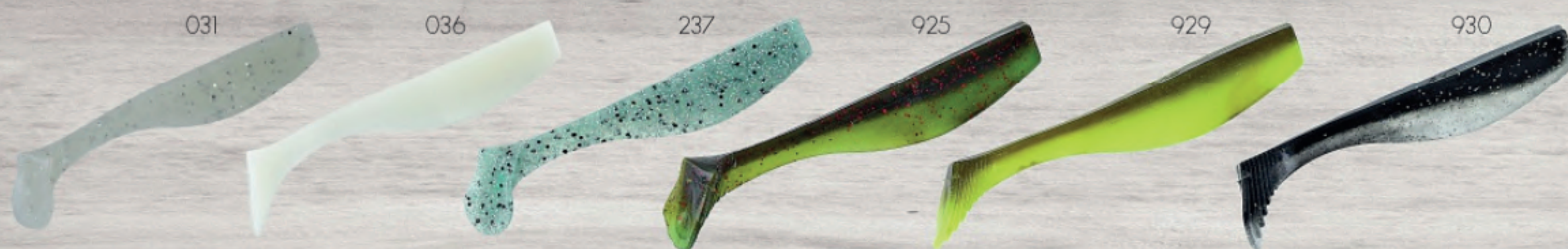
15

The streamlined body of the D-Shad is designed to give that side-to-side twitching action, but the tail is thicker and heavier so when you kill it, it sinks level with a little shimmy. Fish it weightless, on a Carolina-rig, or behind a chatterbait or scrounger.



Swimbaits

3.5" Swim bait
(SB35-06-color)



Swimbait Jighead

(43S4-05-size) 4/0 hook, 5 per bag
 Sizes: 1/4oz (014), 3/8oz (038), 1/2oz (012)
 (43S5-05) 5/0 hook, 5 per bag
 Sizes: 1/4oz (014), 3/8oz (038), 1/2oz (012)
 (43S6-04-size) 6/0 hook, 4 per bag
 Sizes: 012 (012), 3/4oz (034)



5" Hula Swimmer
(31GH-07-color)



Our 4.5" Swim Senko with our new 12-point Hula Skirt, designed to provide more flare and action!

SwimSenkos

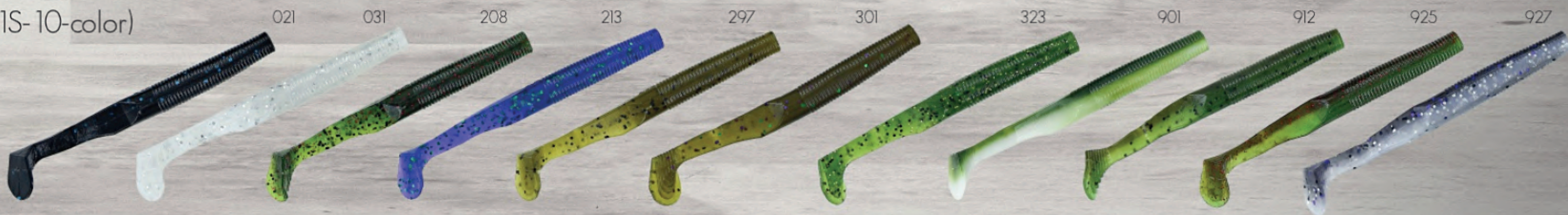
5.5" Swim Senko
(31L-07-color)



5" Swim Senko
(31-10-color)



4" Swim Senko
(31S-10-color)



3.5" Swim Senko
(31M-07-color)



Creatures and Craws

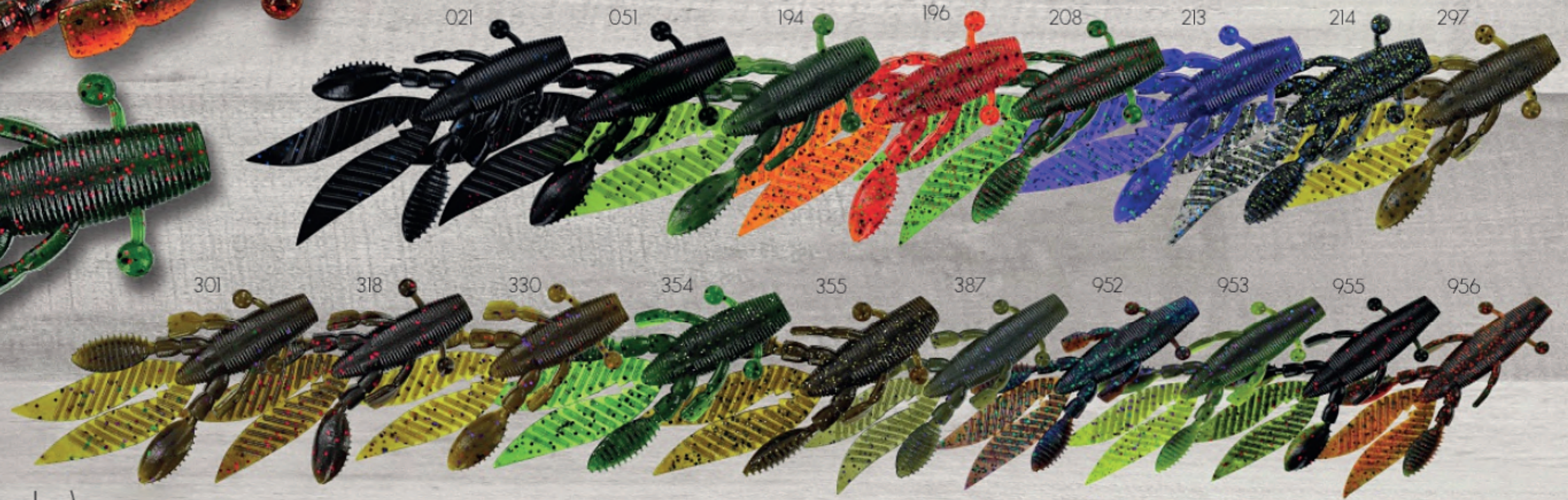
Flappin' Hogs / Psychodad

When bass are feeding on crawdads, look no further than the Flappin Hog. Pair it with a jig, flip and pitch it around cover like laydowns and grass, or Carolina rig it on offshore cover like rocks and brush piles. The Flappin' Hog has just the right amount of fall and bulkiness the fish want.



4.5" Flappin Hog (FHL-05-color)

Colors: 021, 051, 208, 297, 301, 318, 330, 387, 952, 953, 955, 956



3.75" Flappin Hog (FH-07-color)

Colors: 021, 051, 194, 196, 208, 213, 214, 297, 301, 318, 330, 354, 355, 952, 955, 956

PsychoDad

The latest Yamamoto crawdad bait has huge round craws that act like swimbait tails and actually "paddle" when you swim the bait. It's also the only craw with a built-in rattle chamber. The "Dad" also has extra plastic on it's "tail" which holds it up on the new style straight shank punch hooks with the barb keeper. Pair it with a punch weight, a punch skirt and then put it in the nastiest mat you can find and hold on!

4" PsychoDad (3K-05-color)



Kreature

4" Kreature
(5-07-color)

The Kreatures swimming "wings" and flowing skirt provide serious fish-enticing action in the water. Punch it through matted vegetation this versatile soft plastic is good for a variety of presentations but be sure to try it on a Carolina Rig.



Crawdads

3.75" Baby Craw"
(3S-10-color)

3.75" Baby Craw (3S) Colors: 196, 208, 297

3.75" Fat Baby Craw (3FS) Colors: 021, 051, 194J, 196, 208, 221, 236, 297, 301, 325, 330



3.75" Fat Baby Craw"
(3FS-07-color)

Hula Grubs®

Before the Senko, there was the Hula Grub. Rigged on a football jig-head, the Hula Grub allows an angler to effectively fish both shallow and deep water. The unique shape of the jig serves to maintain strong contact with the bottom as well as create an enticing rolling action. After all these years, the bait that got it-all started is still a serious contender.



5" DT Hula Grub (97-10-color)

*colors: 020, 021, 031, 036, 140, 150, 156, 157, 169, 176, 186, 200, 208, 213, 215, 218, 221, 236, 238, 239, 284, 286, 318, 323, 330, 386, 387, 388

187, 194, 194J, 196, 296, 297, 301, 305, 306,

4" DT Hula Grub (93-10-color)

*colors: 021, 031, 150, 156, 157, 176, 194, 196, 208, 221, 286, 297, 301, 330



020

021

031

036

140

150

156

157

169

176

186

187

194

194J

196

200

208

213

215

218



Ikas®

4" Fat Ika
(92F-10-color)



This may not look like more than a solid-bodied tube, but it's actually a fantastically chunky flipping bait. Try rigging the Fat Ika backwards with the flared skirt at the head and pitch it under docks and deep into tule pockets. Let it fall on a slack line and watch it swim away from you.

Grubs

4" Singletail Grub (40-20-color)

colors: 002, 015, 020, 031, 036, 038, 042J, 150, 156, 169, 176, 177, 181, 187, 194, 194J, 196, 208, 214, 221, 239, 286, 297, 305, 306, 334

5" Singletail Grub (18-20-color)

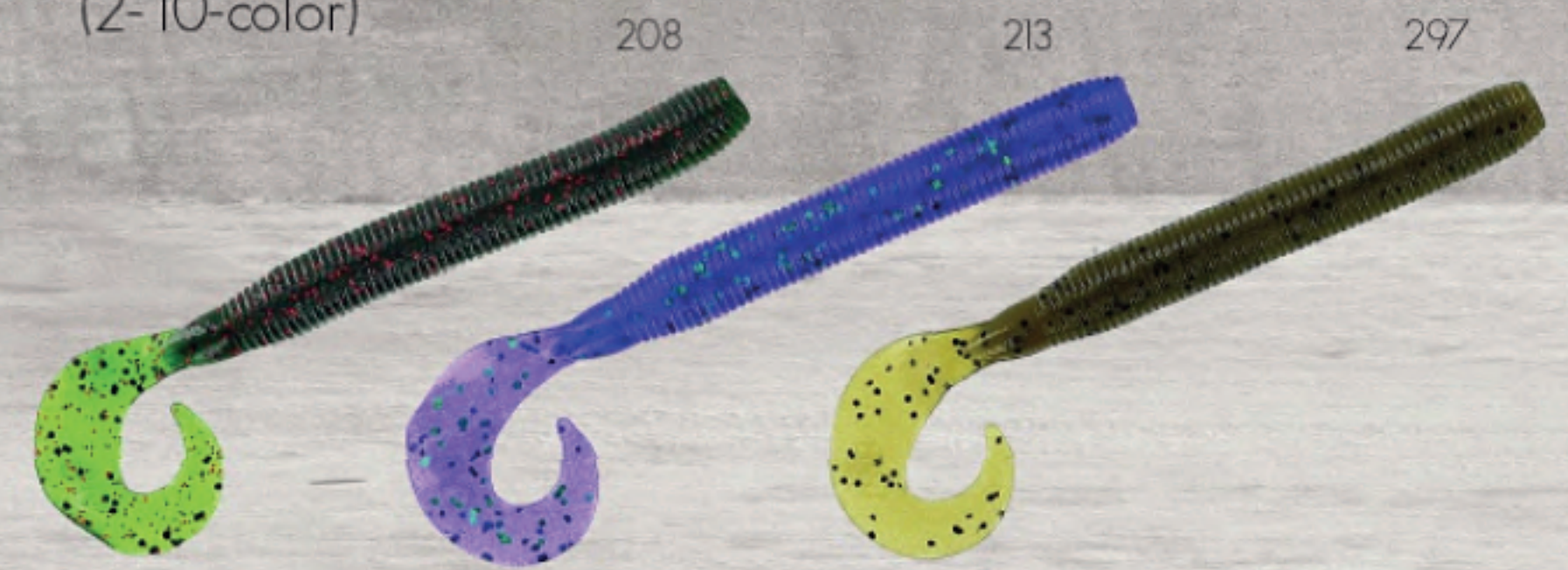
colors: 002, 031, 036, 150, 156, 157, 176, 177, 187, 194, 196, 208, 286, 297, 305, 306



3" Singletail Grub (30-20-color)

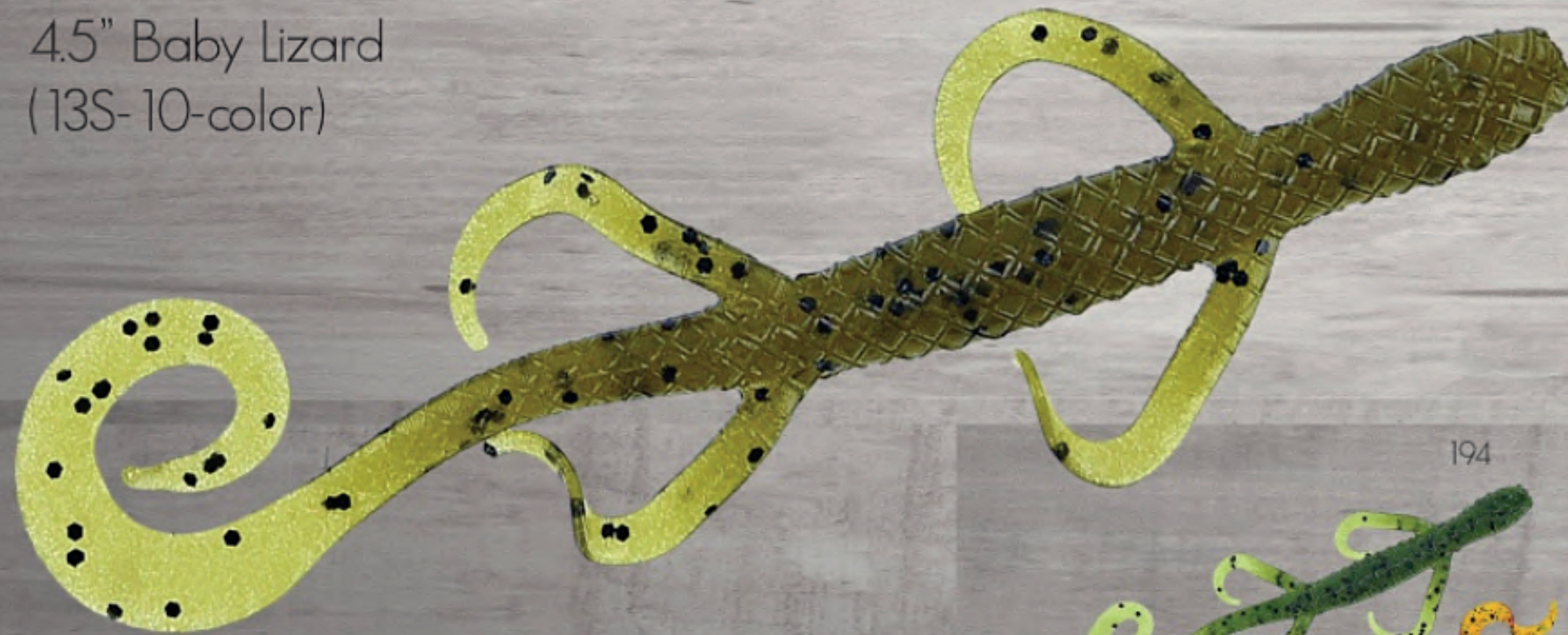


6" "Stretch-40" Singletail Grub (2-10-color)



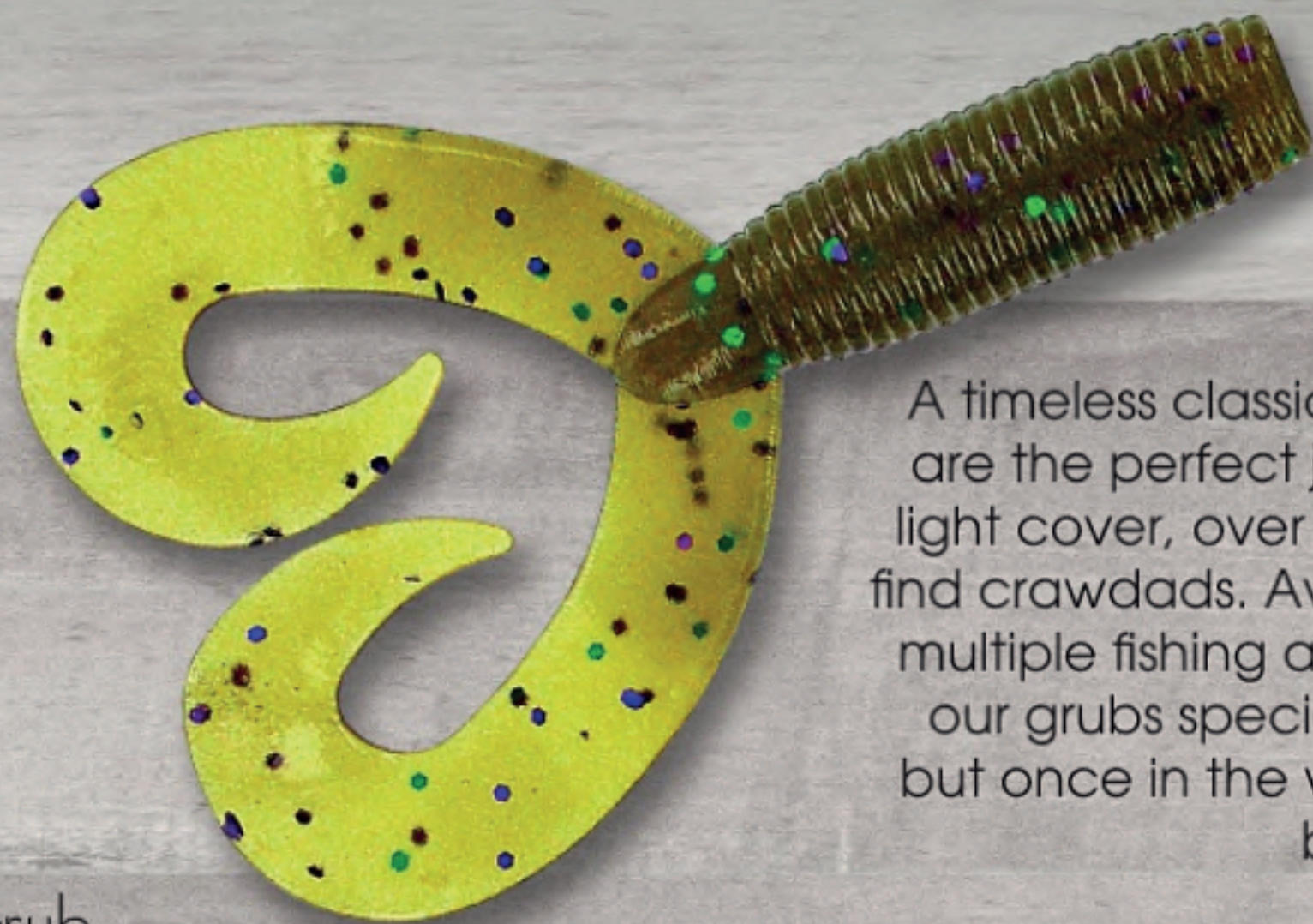
Lizard

4.5" Baby Lizard (13S-10-color)



The Yamamoto Lizard has a profile and action that prespawn and spawn-ing bass just can't resist. No one really knows why, but every spring bass love to gobble up the lizards and the Yamamoto Lizard will fool them lot of the time. As summer rolls around and bass move to deeper water, a the Yamamoto Lizard is still effective. One of the most popular ways to fish the Lizard is with a Carolina rig. You can swim it or punch it through thick cover, coaxing out those hungry bass.





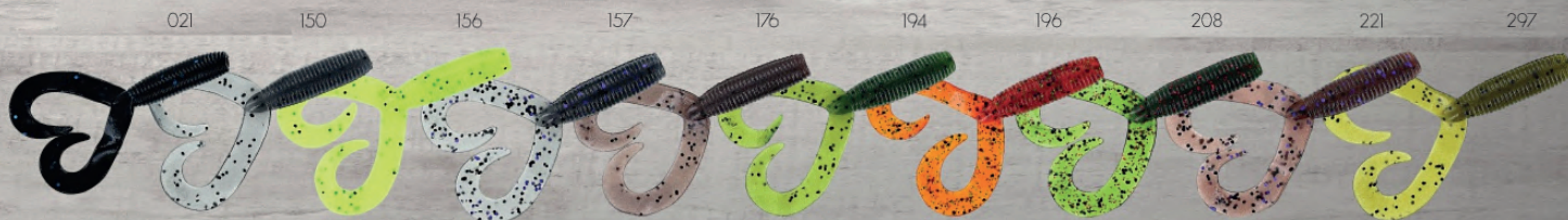
A timeless classic, the single and double-tail grubs are the perfect jig trailer - fish them from heavy to light cover, over rocks and flats and anywhere you find crawdads. Available in a wide variety of sizes for multiple fishing applications, it's the tail that makes our grubs special. It may not do much sitting still, but once in the water that tail begins to move in a bass-enticing way!



5" DT Grub
(16-20-color)

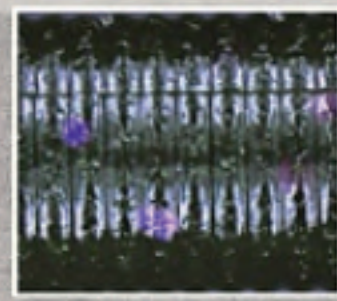


4" DT Grub
(15-20-color)

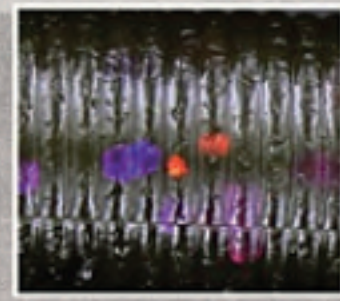


Master Color Chart

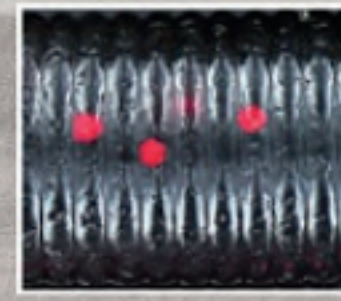
										
002 Smoke	008 Red	009 Red w/ lg red	015 Chartreuse w/ lg chartreuse	020 Black	021 Black w/ lg blue	031 Blue Pearl w/ lg silver	036 Cream White	038 Luminous White	042 Watermelon	042J Fading Watermelon
										
051 Black w/ small red	135 Smoke w/ lg silver	140 Cinnamon w/ lg green	150 Smoke Pepper	156 Chartreuse Pepper	157 Smoke w/ lg black and silver	169 Chartreuse w/ lg chartreuse & green	176 Cinnamon Pepper	177 Smoke w/ lg black and silver	181 Chartreuse w/ lg silver	185 Red w/ lg black and silver
										
186 Pumpkin Pepper	187 Clear Pepper	192 Lemon Yellow	194 Watermelon Pepper	194J Fading Watermelon Pepper	196 Pumpkin w/ lg black, sm green	197 Clear w/ lg black, sm red	198 Brown Grape w/ lg black	200 Clear w/ lg bronze	208 Watermelon w/ lg black, sm red	213 Junebug Purple w/ emerald
										
214 Smoke w/ lg black, blue, sm chartreuse	215 Cinnamon Red w/ sm blue	218 Champagne Pepper	221 Cinnamon w/ lg black & purple	222 Christmas Tree Watermelon w/ lg green & red	229 Bubble Gum	231 Plum w/ sm emerald	232 Plum	234 Purple Pearl w/ sm blue	236 Smoke Rootbeer w/ sm green & copper	237 Daquiri w/ lg black, sm hologram
										
238 Smoke w/ lg black, sm hologram	239 Blue Pearl w/ lg black, sm hologram	240 Smoke Pearl Blue	241 Cinnamon Brown	284 Rootbeer w/ lg red, sm gold	286 Dark Pumpkin Pepper	296 Rootbeer w/ lg black, sm double green	297 Green Pumpkin Pepper	300 Pearl Gold	301 Green Pumpkin w/ lg green & purple	302 Red w/ lg black and red
										
303 Pearl w/ gold and black	305/000N (old 938) Baby Bass / Clear Bely	305 Baby Bass	306 Natural Shad	318 Green Pumpkin w/ lg red	323 Fading Watermelon w/ black & sm green	324 Fading Watermelon w/ lg green	325 Oxblood w/ sm red	326 Clear w/ gold, silver & black	327 Fire Tiger - Chartreuse w/ black, green, copper	328 Fading Watermelon w/ blue



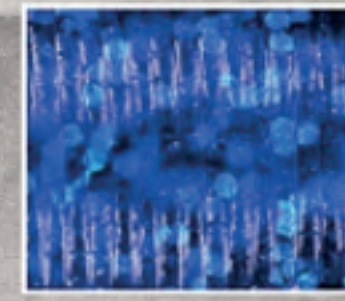
329 Fading Watermelon w/ purple



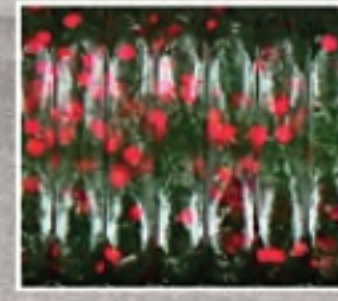
330 Green Pumpkin w/ purple and sm copper



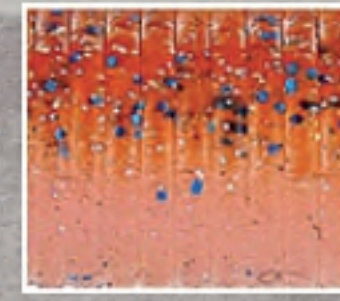
334 Light Smoke w/ lg red



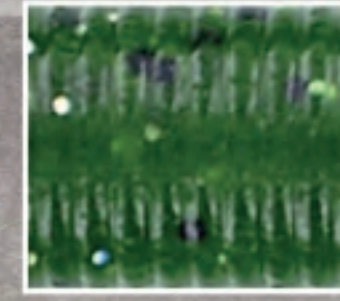
335 Blue w/ light blue



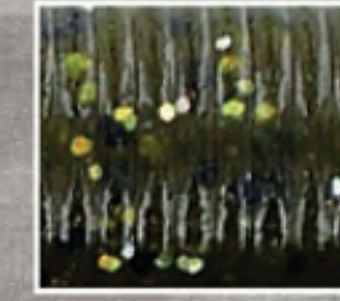
337 Fading Watermelon w/ sm red



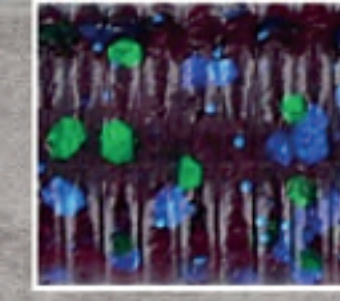
341N/000 Brown/Blue Gill/Clear



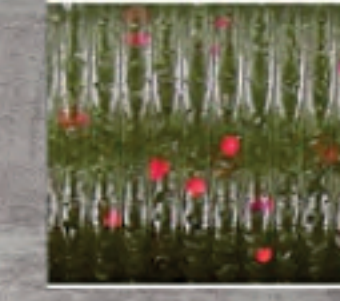
354 Watermelon Magic



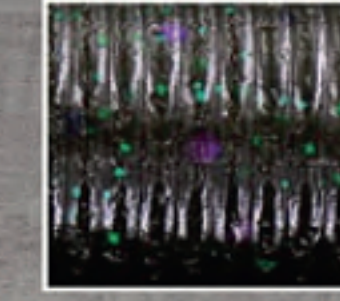
355 Green Pumpkin Magic



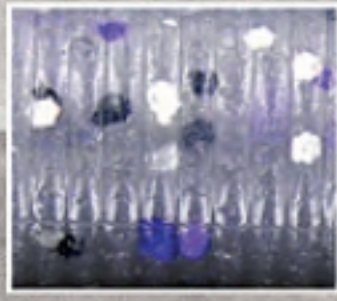
356 Plum Apple



357 Light Green Pumpkin w/ sm red



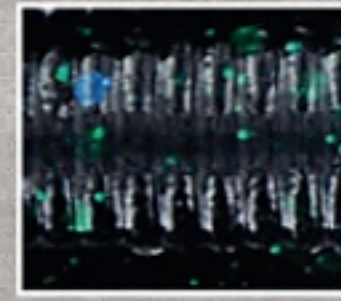
358 Dark Pumpkin w/ purple, black and emerald



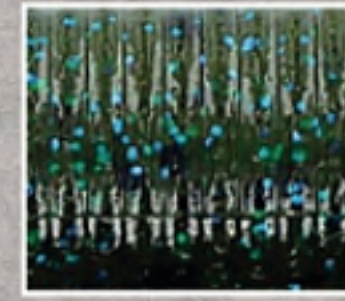
359 Smoke Blue Pearl w/ silver, black, purple



361 Watermelon Red Magic



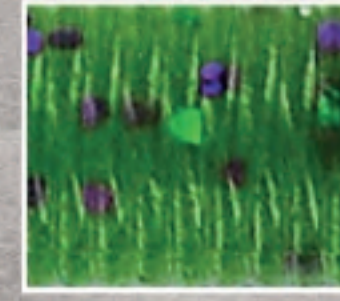
362 Midnight



363 Green Pumpkin Blue



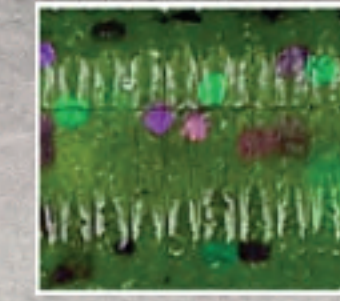
364 Pearl White



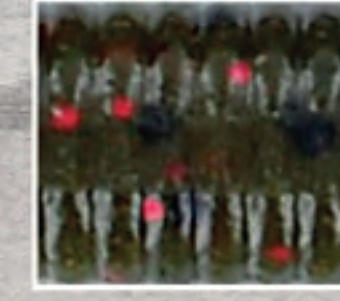
366 Watermelon w/ lg purple and green



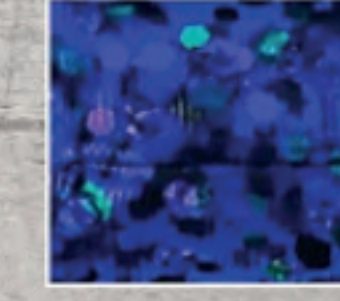
367 Mad Melon



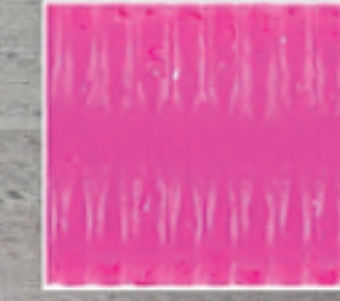
368 Watermelon Candy



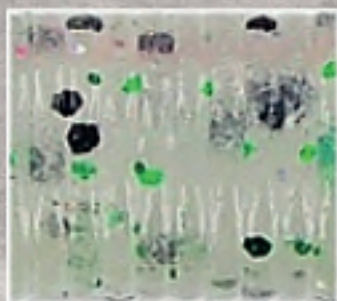
369 Green Pumpkin Red w/ black



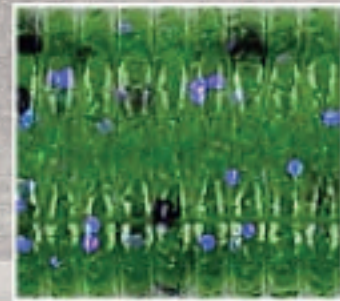
373 Jazzy Junebug



371N Morning Dawn



375 Disco Green



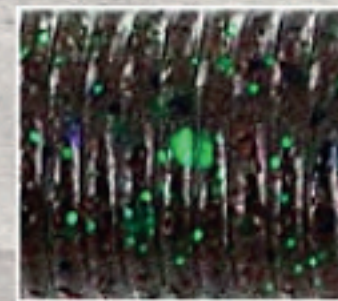
376 Watermelon Violet



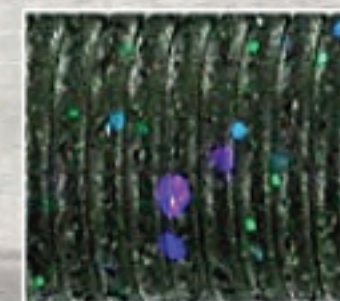
379/000N (old 938) Light 301 / clear belly



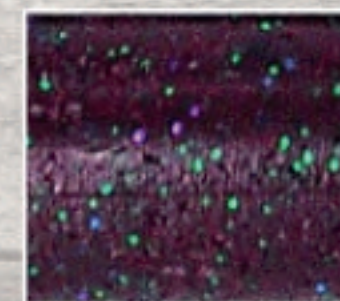
380/381N (old 940) Brown, sm blue / light 042



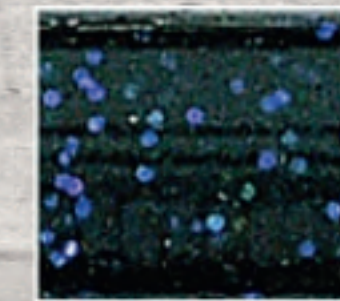
386 Bug Grinder



387 Mowed Grass



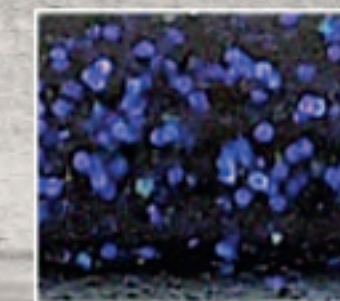
388 Dirty Plum



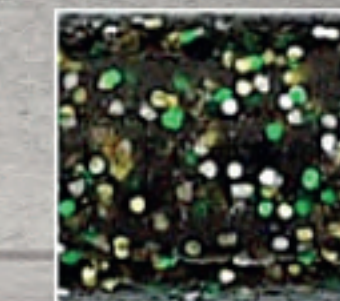
392 Watermelon Disco



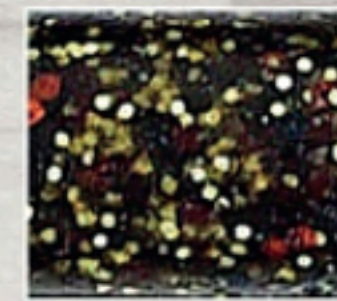
396 South African Special



397 Electric Worm



398 Dusky



399 Dirty Worm



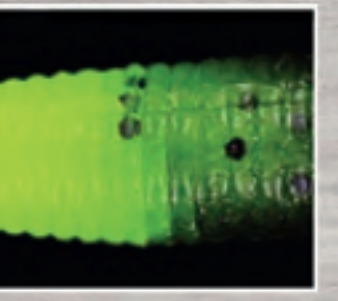
522 021 body / 156 skirt or tail



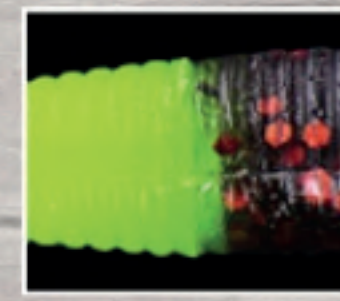
523 021 body / clear blue skirt or tail



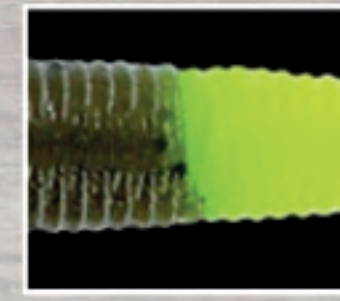
541 221 body / methiolate tail



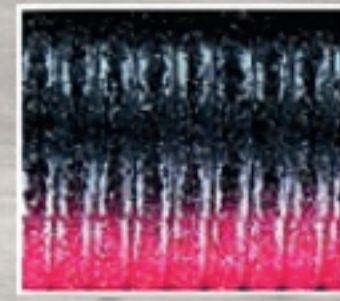
542 194 body / 192 tail



543 Smoke black and copper body / 192 tail



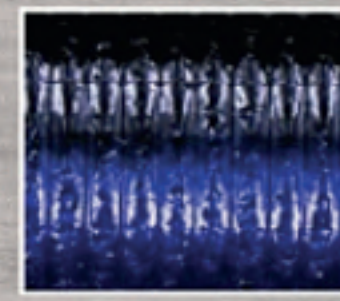
547 297 body / 192 tail



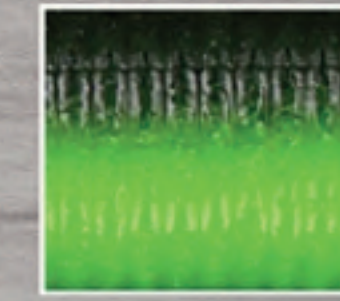
900 Red Shad



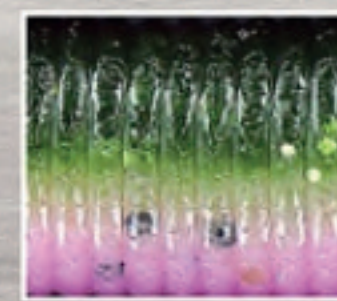
901 Watermelon / White



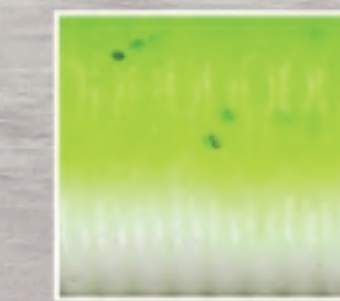
904 Black / Blue



906 Watermelon / Lemon



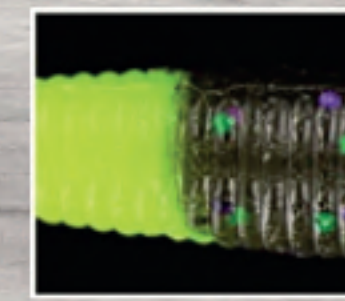
908 Rainbow Trout



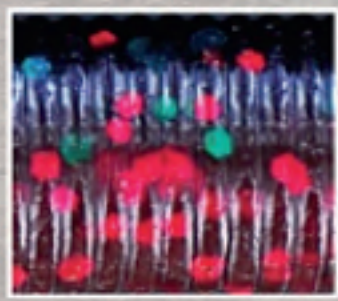
909 Chartreuse Shad



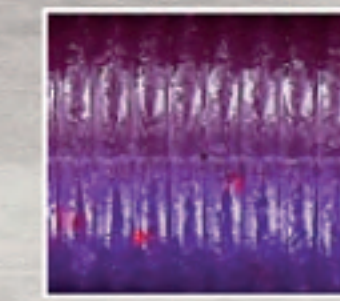
912 Green Pumpkin / Watermelon



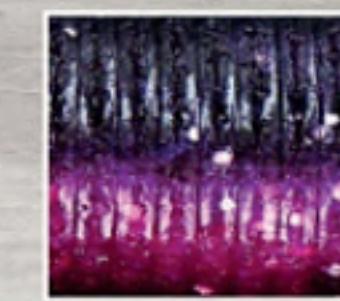
913 Green Pumpkin body / chartreuse tail



918 Peanut Butter and Jelly



921 Brown Purple



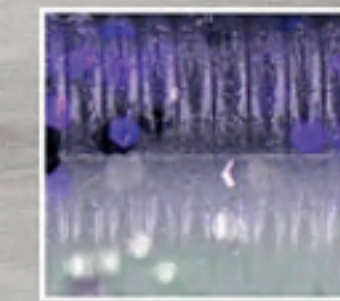
922 Black / Red with silver



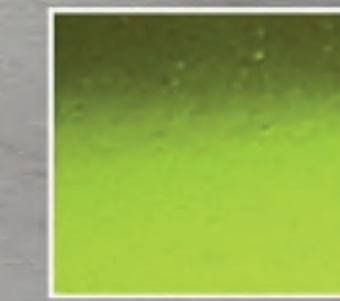
925 Green Pumpkin w/ sm red / 042



926 Dk Green Pumpkin w/ purple, black, sm emerald / transparent Amber



927 Smoke w/ purple hologram / 031



929 Green Pumpkin no flake / Lemon



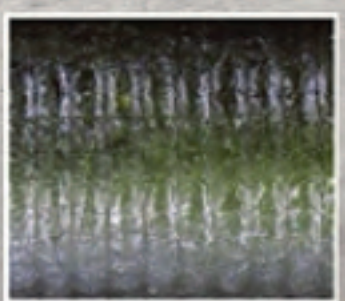
930 Black / 000 with hologram



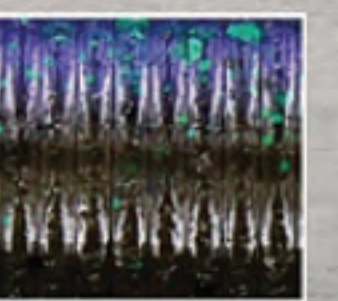
935 Black / 187



947 Blueback Herring



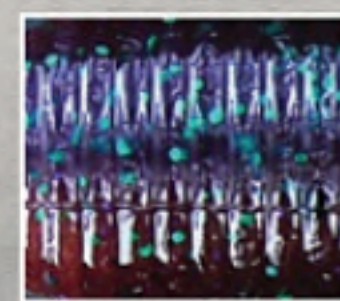
948 Olive Shad



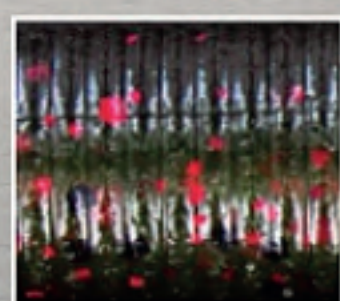
952 Bama Bug



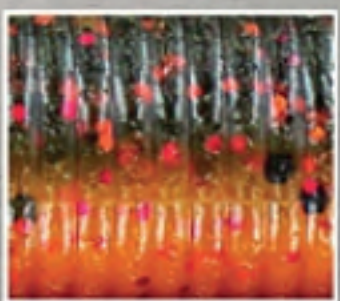
953 Smoke w/ purple & blue / watermelon w/ blue



954 Purple w/ emerald / Cinnamon w/ purple, blue & emerald



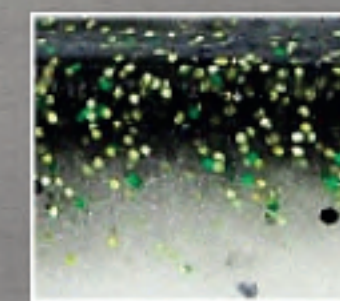
955 Watermelon Black w/ red / lite Watermelon w/ black & red



956 Watermelon w/ copper / Orange with red



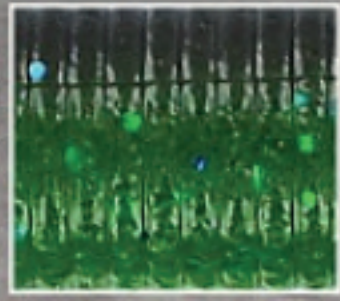
957 Blue Pearl



958 Smoke Shad



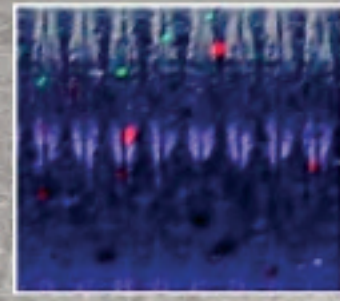
959
Lime Fever



960
Green Weenie



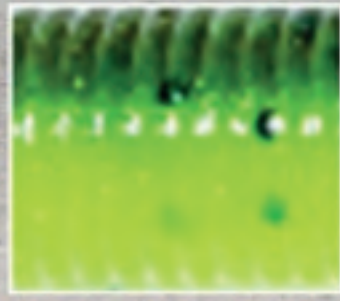
962
Okeechobee Craw



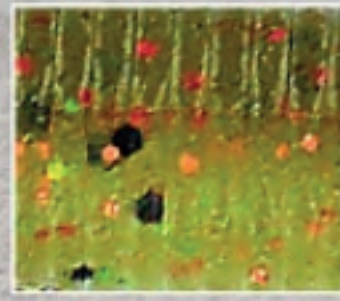
963
Gooseberry



964
Watermelon Slice



966
Chartreuse / Pumpkin



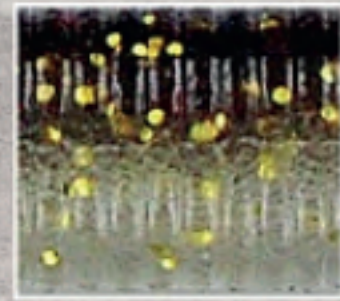
967
Goby



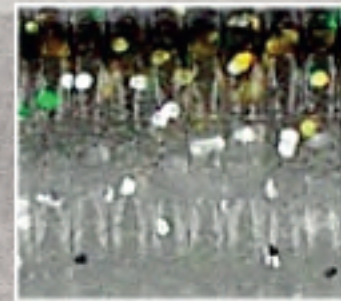
968
Perch



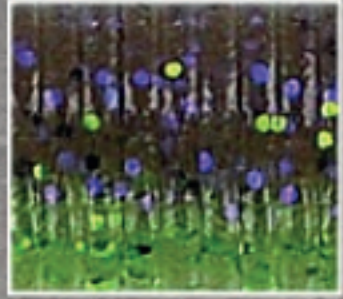
973
Electric Shad



974
Dirty Shad



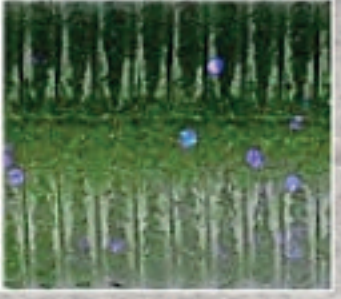
975
Green Flash



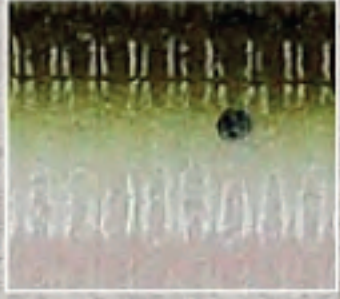
976
Bluegrass



979
Houdini



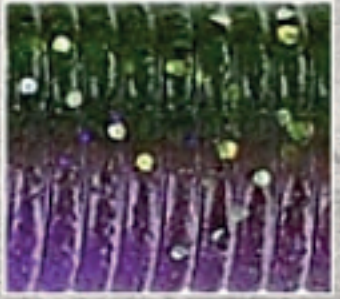
980
Watermelon Moondust



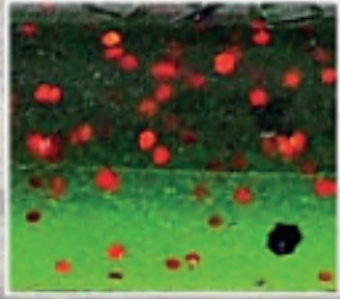
981
Green Pumpkin / White



983
Strawberry Cream



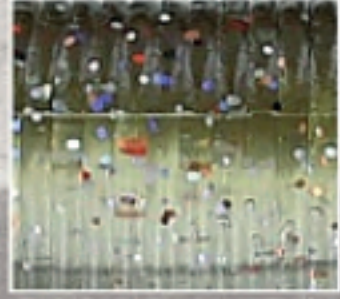
984
Lavender Watermelon



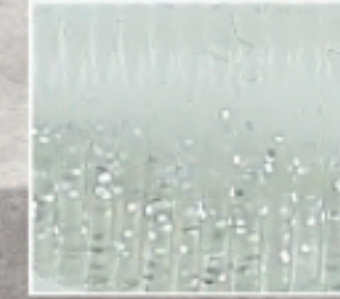
990
General's Melon



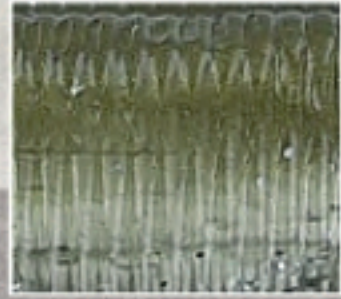
991
021 / 297



992
Rainbow Shad



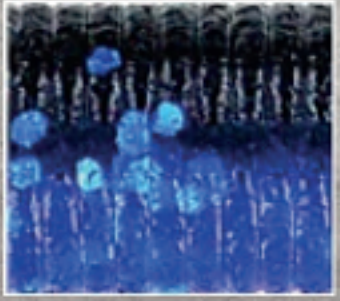
993
Sign Flash



994
Tennessee Shad



995
021 / 238



996
Bruised Shin

Hula Swimmer Combos



235
904



194j
912



370
947



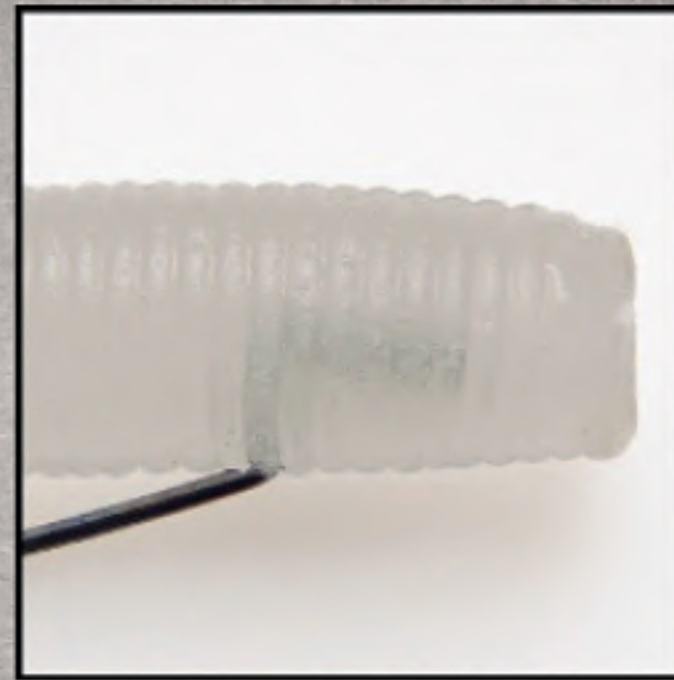
371
948



156
951

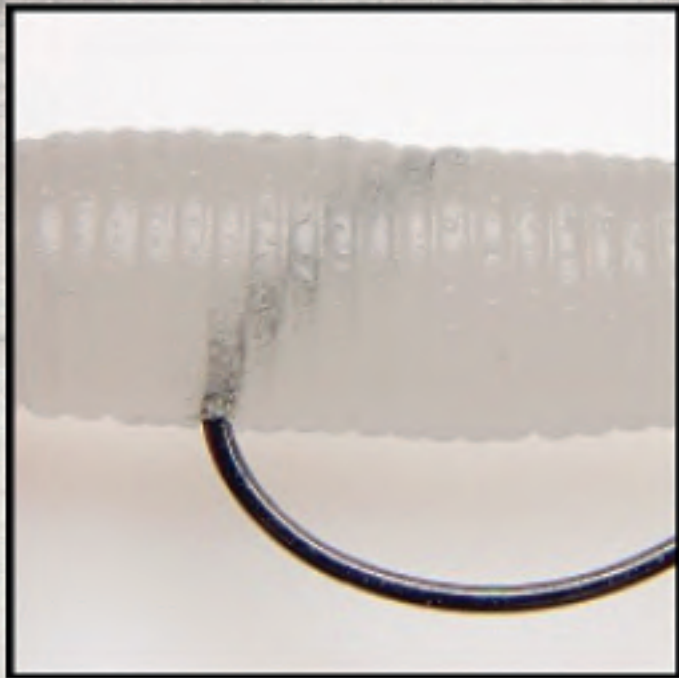
Talkin' Texas - Four Ways to Lasso and Hog-tie a Yamamoto Bait

Texas rig, Carolina rig, Mojo rig, with a screw-in sinker, a splitshot or dropshot, weightless or wacky rig? A Senko or Kut-Tail can be effective all these ways as can most of our soft baits. Except wacky rig or using our Split Shot hook, you often start out the same by putting the offset eye portion of a hook through the nose of a bait and out the chin. Then with the point end of the hook, do one of the following, depending on how heavy the bass-holding cover is at any given moment.



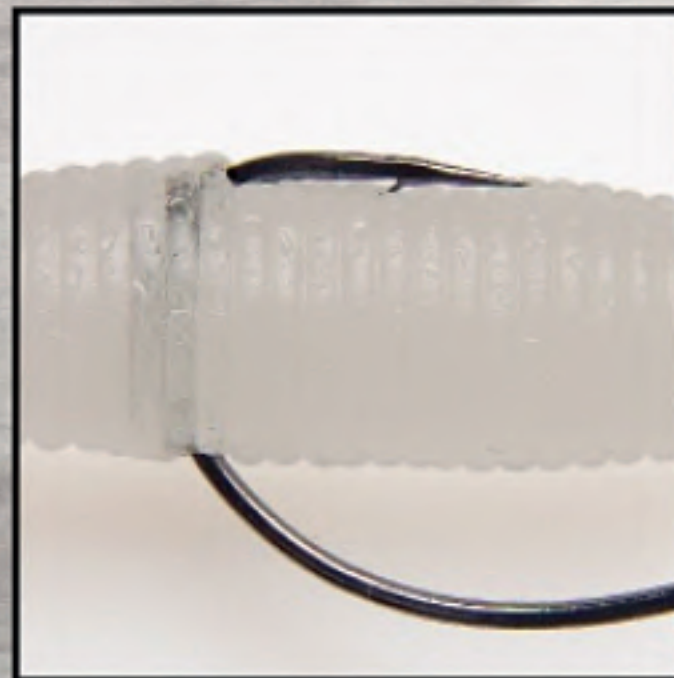
Texas Rigged

For the heaviest cover, the only option may be to put the point in through the bottom of the bait, and not have it come out the top surface. Works best with the thinner-bodied baits where you do not have to drive the hook through a big wad of plastic on a hookset. Many anglers under-estimate the gear required for this. Texas rigging is not a light or medium line-rod technique. A heavy rod, reel and line are required to drive the hook through the plastic. (Sidenote: For flipping and pitching short distances, Gary Yamamoto prefers the solid hooksets he feels are provided by Texas rigging with a straight shank hook. For casting weightless baits or distances, he opts for an offset shank to help keep the bait in place during a long cast.)



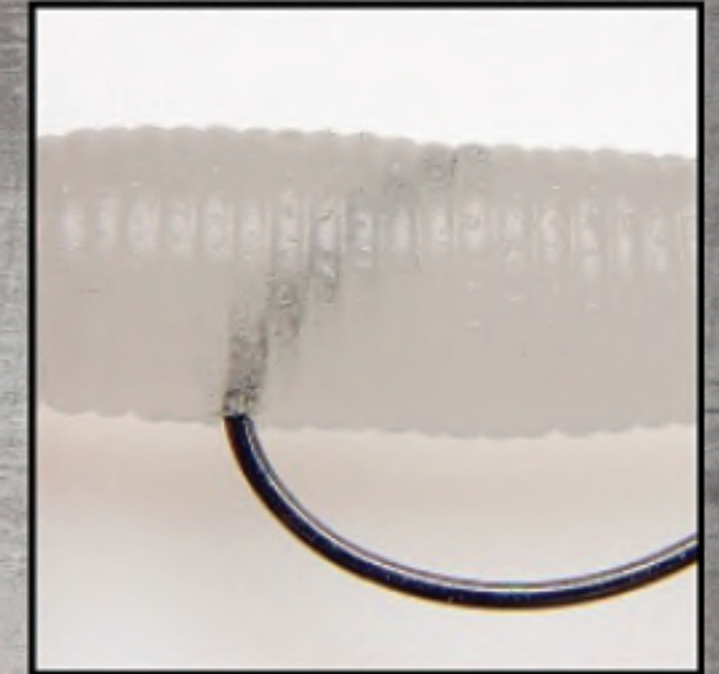
Tex-Exposed

For open water or thin cover, put the point into the bottom of the bait and all the way out the top of the bait. The barb on some hooks like the Yamamoto Sugoi angle downward, so the point will hug flat on top of the bait. This is called "Tex-Exposed," meaning it is an exposed point Texas rig. Applications are where the water is mostly open, with few snags and sparse weed patches. Tex-Exposed works a bit better on big, fat-bodied grubs or on wide-bodied lizards where there is some girth that tends to bump the Tex-Exposed point away from any snags.



Tex-Skin on Top

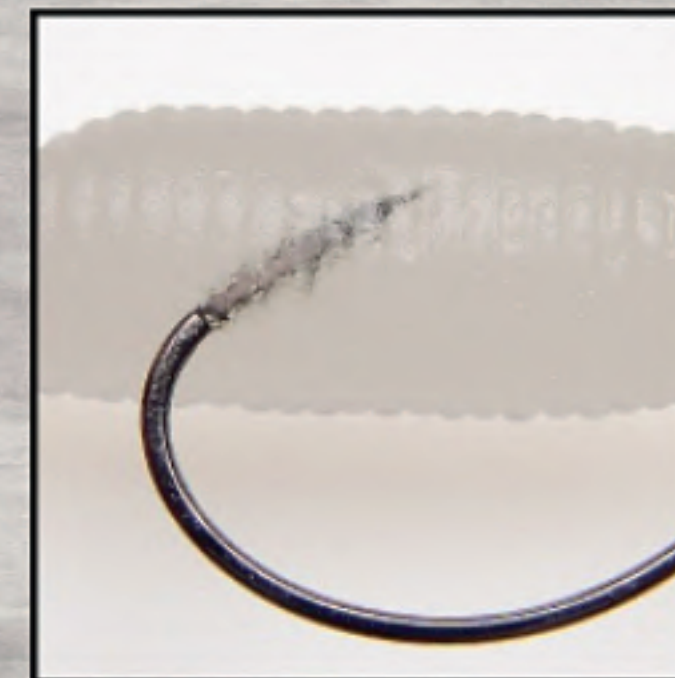
For moderate cover, follow the directions for Tex-Exposing the hook. Then, insert the hook point and barb just under the skin on the plastic bait's back. You have to pull the plastic in front of where the hook comes out the top of the bait, and stretch it forward a bit. While it is still stretched, insert the point just under the skin, and then push the stretched plastic back to cover the barb area. The only way to describe it is that the hook point should appear just under the bait's skin exactly as if you got a splinter in your thumb, just under your skin.



Tex-Skin on Side

For moderate cover. In this variation, you do not insert the hook through the bottom of the bait. Instead, let the hook dangle down with the hook bend underneath the bait's body, and the hook point alongside the bait. Now scrunch the bait forward a bit with your fingers, insert the hook point into the side of the bait, then slide the bait back so that the point and barb are under the skin on the bait's side. This is often used with light tackle, since the hookset is easier to break out of the plastic this way.

Above all, you need to leave some slack in the body of the lure when you rig it. You cannot have the bait stretched too tightly onto the hook. Tautness in the



lure body is what makes for poor hooksetting. You have to leave the slightest amount of slack in the body between the hook eye and the embedded point. The slackness makes for a good hookset. This is a feel that only comes with doing it right. Leaving slack does not mean that the lure should look like it has a bend or curve caused by the way you rigged it - it should look perfectly straight - but when you press down on it with your index finger, right where you want the fish to bite it, there should be some looseness, some slack give in the lure body. You want the fish's mouth to depress the bait's body down easily in the section ahead of where the hook

point is waiting. Once the hook point starts to grab hold in the fish's mouth, you really want the entire bait to easily pull down off the front portion of the hook and out of the way where it won't interfere with a good hookset. This is kind of hard to describe, but very recognizable once you get the hang of doing it.

Rigging Guide

Weightless Rig



The purest form of rigging, and most deadly with the Senko. No sinker is used and the hook can be tied directly to the main line. Optionally, tie the hook to a 12"-24" leader tied to a swivel to reduce any line twist that may occur with weightless rigs.



The 6" 9L Senko (color 187) rigged weightless produced an amazing 10.27lb world record spotted bass for California angler Bryan Shishido.

Unpegged Texas Rig



A bullet sinker is allowed to slide freely on the main line with the hook tied directly to the main line, but sometimes the sinker can slide far up the line away from the bait. This makes for inaccurate casts and imprecise presentations. For more control over an unpegged sinker, you can contain it on a short 12"-18" leader tied to a swivel. This gives you the freedom of unpegged lure movement and you gain better control over the cast and presentation.

Shakin' Rig



Use a bead on an unpegged Texas rig. The sinker will hit against the bead and make a clicking noise that can attract fish.

Note: With a pegged bullet or screw-in sinker, it can be important to thread the hook eye up to an inch or more into the bait. This leaves room so the hook eye is not jammed immovably against the sinker. Otherwise, if the eye is pressed against the sinker, gripped inside the fish's tightly-clamped mouth, then you only move the entire bass/weight/hook forward without penetrating on the hookset. Leaving up to an inch or more of slack ensures enough room to move the hook and have it start to set before it jams up behind the sinker.

Pegged Texas Rig



Jam a wooden toothpick in the end of a bullet sinker and break it off. Don't jam it in so tightly that you risk weakening the line. Slide it down the line, and the toothpick will hold the sinker securely against the nose of a soft bait used in heavy cover. The sinker and bait will act like one unit that slips through weeds and resists snagging in cover.

Screw-In Rig



An advancement over the toothpick-pegging method, screw-in sinkers are molded around a thin Teflon tube and a corkscrew wire that screws into the nose of a soft bait. Slip the sinker on the main line, tie the hook directly to the main line, and screw the sinker into the nose of the bait. This provides the ultimate in weedless and snagless presentation for big bass in heavy cover.

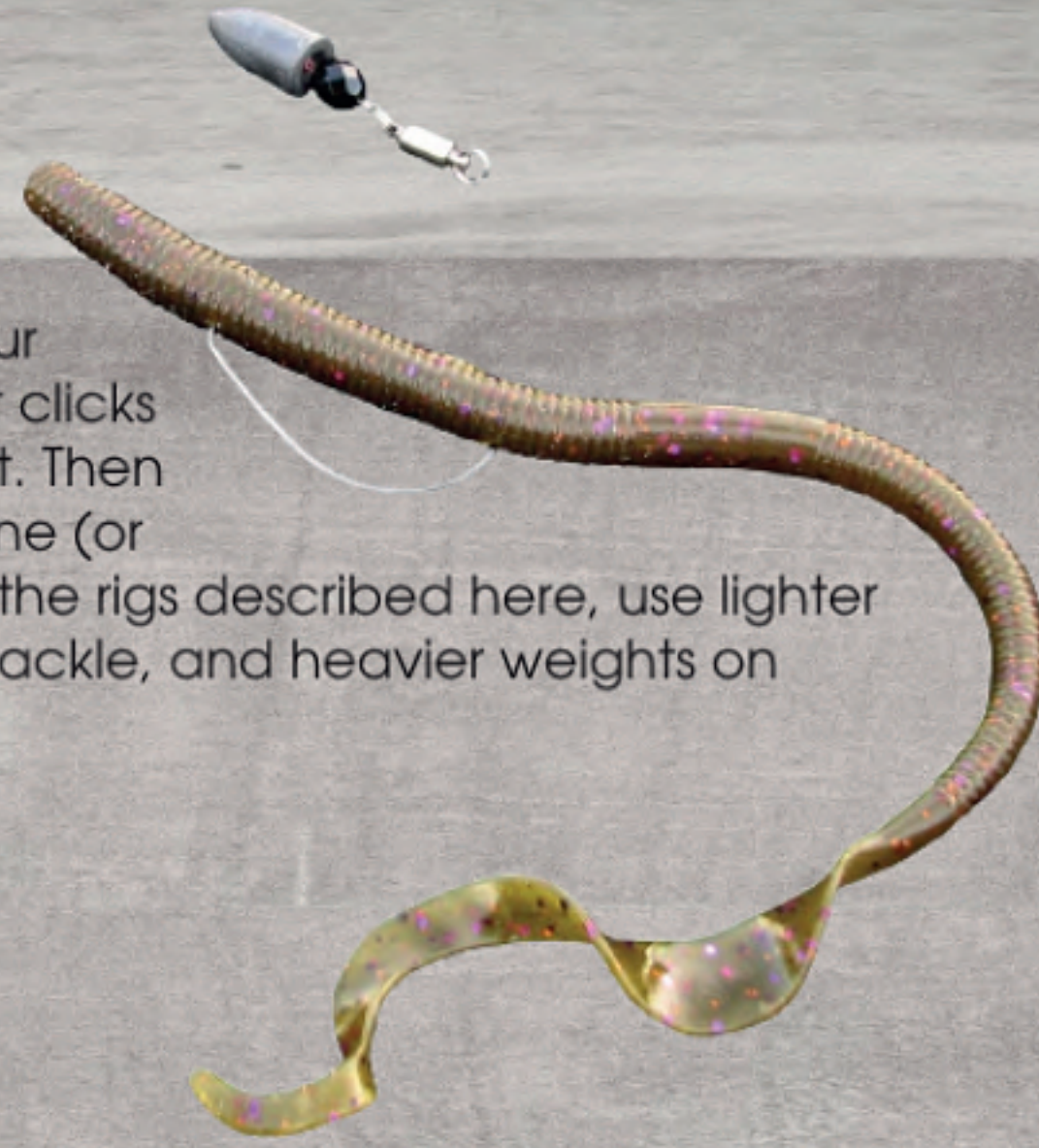
Mojo Rig



Mojo sinkers are long and thin. The sinker shape allows a Mojo rig to slide easily through rocks, weeds and brush better than most other sinker types. Mojo rigs also work for vertical fishing in deep water where baits are suspended for bass lurking in or under the tops of flooded trees and brush. They are part of a complete system that includes rubber strands that thread through the sinker to peg it from 12"-24" up the main line above the bait. The rubber strands cushion the line from any potential damage that can occur with wooden toothpicks or crimping splitshots on the line.

Carolina Rig

Most often used on open, relatively un-obstructed bottom. Thread a 1/2 to 1 oz sinker onto your main line, followed by a bead that clicks when the sinker hammers against it. Then tie on a swivel, an 18"-24" leader line (or longer), and your hook. As with all the rigs described here, use lighter weights on Carolina rigs with light tackle, and heavier weights on Carolina rigs rods, reels and lines.



Rockhopper Rig

An advancement over the Carolina rig for rock strewn bottoms. The rockhopper sinker can come through snags that stop most sinker types. Sinker is a product of Mojo Lure Company, Inc.



Splitshot or Splitshot Rig

Tie a hook to the end of your line and pinch one or more split shot 18"-24" above the hook. Keep in mind, don't pinch the split-shot shut so tightly that you risk damaging the line. The Mojo Splitshot is an advancement that uses rubber threads to cushion the line. If not used in snaggy areas, simply nose-hook the bait with Yamamoto's series 53 Splitshot hook.



A splitshot rig is most often used with light line. Since splitshot sinkers are typically smaller and lighter than any other sinker types, you can slowly drift a splitshot rig down past bass suspended in mid-depths above deep water. A splitshot can be used for a delicate lightweight presentation in shallow water, or to sweep a bait down with the current flow in a stream or shallow river. The bait will swirl and sway as it is buffeted around by the water flow while the splitshots keep it hunkered down near the bottom! *Sinker is a product of Mojo Lure Company, Inc.

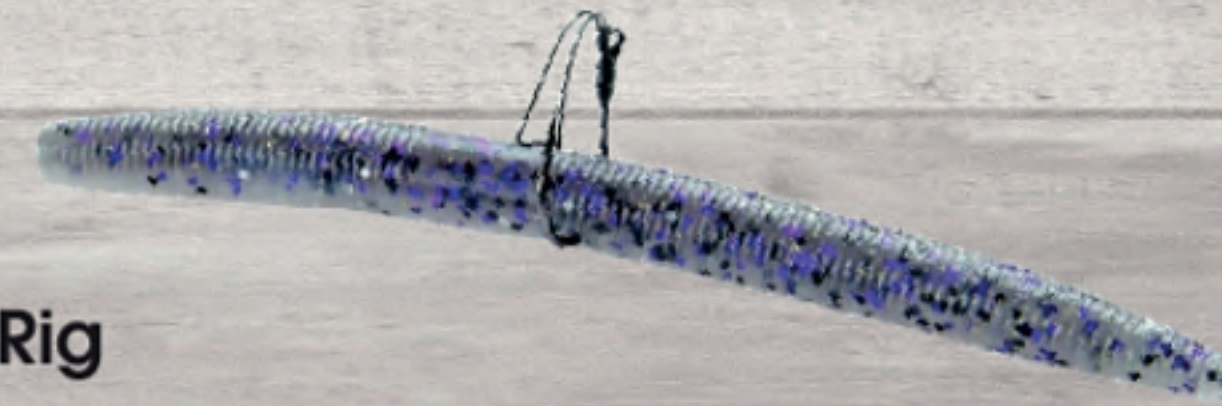
Dropshot Rig

Tie a Yamamoto series 53 Splitshot Hook onto the main line with a Palomar knot. The loose tag end of the knot is left anywhere from 12"-24" long. After the knot is tied, the tag end is threaded through the hook eye in the direction that keeps the hook point positioned up. A swivelling style sinker is then clipped onto the dangling end of the line anywhere from 6"-24" below the hook. The bait is then nose-hooked. Optionally, the bait can be wacky-rigged in the middle to reduce any line twist that may occur with dropshot rigs.



Wacky Rig

Using your favorite hook or one designed specifically for wacky rigging a Senko, like the Gamakatsu Finesse Wide Gap (p. 12), bend the bait in the middle so both tips touch. Then poke the hook straight through the bend in the middle.



Swimbait Rig

Thread the 43S5 or 43S6 Yamamoto Swimbait Jighead into the body of the swimbait and bring the hook point out the back about 1-1/2 inches back. Press the bait firmly against the head and softly squeeze the sides to secure the bait onto the tri-cone collar. The best action comes from a slow steady retrieve with the occasional pause or twitch to entice those following fish.



Midasu Lipless Cranks

(82-Mid-55/65/75-color)

The Midasu lipless crank offers a loud sound chamber, is available in unique foil finishes and comes with Mustad hooks. We've gone out of our way to improve the design of this bait by creating a tear-drop belly which presents a more shad-like profile. When the bait is stopped in the water, the weight settles into this tear-drop belly and causes the bait to flutter seductively. We've stretched the body slightly and moved the front hook forward and the rear hook closer to the back so you can change out to bigger hooks without worrying about them tangling up with each other. These unique approaches to the design in our Midasu Lipless Crankbait will provide hours of success on the water!



55-Series
1/4 oz

65-Series
1/2 oz

75-Series
3/4 oz



305
Baby Bass

306
Natural Shad

601
Silver Black Back

602
Silver Blue Back

603
Sexy Shad

604
Crawfish Green

605
Crawfish Red

607
Chartreuse Black Back

616
Fire Tiger

617
Spring Craw

618
Silver Black Back
Chrome

619
Silver Blue Back
Chrome

The Tate Pencil

(82-Tat-76/100-color)

A classic walk-the-dog topwater with more character and zip than its counterparts. Even a novice can effortlessly make it sashay in place, while in the hands of an experienced top-water artist it can be made to dance around cover and imitate wounded prey until even the most disinterested bass cannot help but strike. It's deadly in just inches of water but can also call up big fish from the depths with the moves of a ballet dancer and the spirit of a warrior.

76-Series



100-Series



603
Sexy Shad



606
Chartreuse Blue Back



607
Chartreuse Black Back



305
Baby Bass



601
Silver Black Back



602
Silver Blue Back



608
White Bone



609
Black Bone



610
Green Frog

The Shibuki Popper

60-Series

This popper may be small in stature but packs a big punch, moving as much water as you desire with a simple twitch or pull of the rod. With a subtle action, you can make it just barely disturb the surface but with a downward yank you can spray water a long distance. Find the perfect cadence and its premium color schemes and sticky-sharp hooks will grab every fish that even looks at it crosswise. It's ideal for imitating a fleeing baitfish of any species or drawing cautious fish out of the gnarliest cover.

80-Series

(82-Shi-60/80-color)



305
Baby Bass



601
Silver Black Back



602
Silver Blue Back



603
Sexy Shad



608
White Bone



609
Black Bone



610
Green Frog



Spinnerbaits

Lite Wire Spinnerbait (77-size-color)
Sizes: 3/8 oz (38), 1/2 oz (12)



701



702



703

Heavy Wire Spinnerbait (78-size-color)
Sizes: 3/8 oz (38), 1/2 oz (12)



704



705



706

Buzzbaits

4 1/2" Small Buzzbait (72-size-color)
Sizes: 1/4 oz small silver blade (14S)
1/4 oz small gold blade (14G)



701

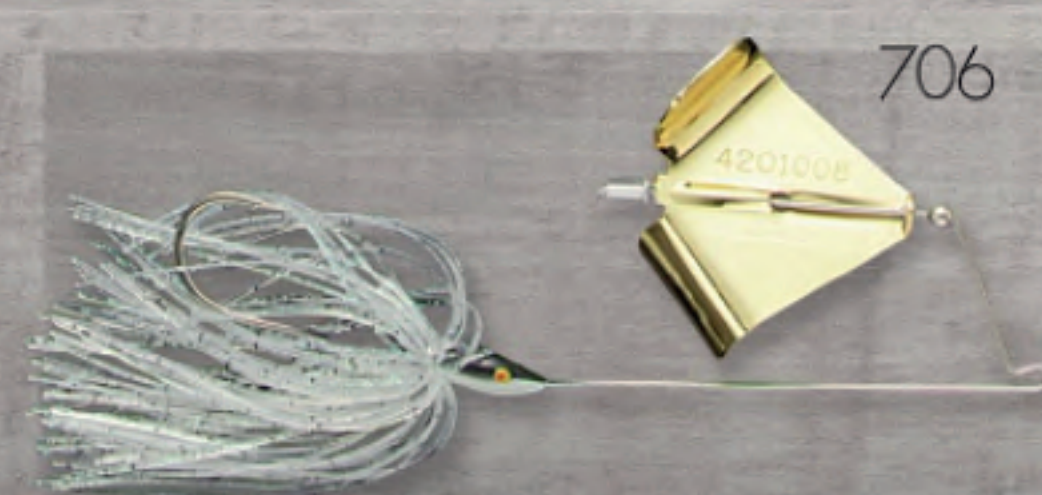


703



704

5 1/2" Jumbo Buzzbait (73-size-color)
Sizes: 1/4 oz small silver blade (14S)
1/4 oz small gold blade (14G)



706



707

Sugoi® Fishing Line

Clear Sugoi® Flippin' and Drop Shot Line
130 yards (59-120-lb test) (8-25 lb)
(5-6 lb)

Use our heavy-duty clear fluorocarbon line for big bass in heavy cover. Incredible abrasion resistance and longevity. Weights 5-8lb are perfect for drop-shotting! Available in: 5lb, 6lb, 8lb, 12lb, 16lb, 20lb, 25lb

Gray Sugoi® Casting Line
130 yards (59-120GR-lb test)

Sugoi Gray Fluorocarbon line allows you a smaller diameter with ultra sensitivity and low stretch, without sacrificing strength. The most durable, castable, sensitive line we've ever fished. Available in: 8lb, 10lb, 12lb, 14lb, 16lb

Sugoi Braid (59BR-150-lb test)

150mm spool. The new Sugoi® Braid has more strength and a smaller diameter than anything else on the market. "My basic spinning tackle for bass is either 16 or 20 lb braid with 16, sometimes even 20 lb fluorocarbon leader. The lightest leader I ever use is 14 lb test fluorocarbon. That's even to dropshot or with a shakey jig - although the power of this set-up makes it usable with anything." - Gary Yamamoto

Moving up to a heavier leader easily doubles the leader strength that most anglers are used to using - it eliminates that weak leader link from the system (as well as eliminating 10 lb braid) and it casts farther and smoother than traditional braids. Invest in this new braid and you'll be changing your line a lot less often! Available in 16lb and 20lb test.



Kits & Specialty



Senko Kit (16-Senko-Kit)

Forty of our very best Senkos (7 each: 9-297, 9-194, 9-031, 9S-196; 6 each: 9S-901, 9S-214) in a rugged, re-usable Plano utility box with instructions from Gary Yamamoto detailing how to use the Senko.

Swim Senko Kit (16-Swim Senko Kit)

The perfect 36-piece sampling of our 5" Swim Senko (6 each) in colors 021, 031, 157, 196, 208, 297, kept neatly in a Plano utility box. Included are Gary's personal tips on how to use this great product.



Yamamoto Rod Cover (29-Rod Cover-right)

Keep your investment in rods and reels protected with a Yamamoto rod cover. Helps prevent line tangles and damage to equipment. Adjustable velcro top flap for rods longer than 7'.



MegaStrike Scent Attractant (39-Mega)

Scientifically formulated with advanced amino acids and proteins to work in concert with bass chemo receptors and olfactory glands. 2 fl. oz tube.



Hooks and Jigheads

Gary Yamamoto Custom Baits offers Gamakatsu Hooks with an exclusive 35-degree hook. More gap between the eye and the hook increases hookups and provides a better swimming action. Available in these hooks: 43S5-series, 44G and W-series and the 67-series.



*Gary's Swim Jig
(36-03-size/weight)

*Swimbait Jighead

Saltwater Roundball Jighead
(42SW-06-size)



Sizes: 1/16 oz w/ 1/0 hook
1/8 oz w/ 2/0 hook
1/4 oz with 2/0 hook



Sizes: 2/0, 3/0, 4/0, 5/0, 6/0
Weights: 1/16oz, 1/8oz, 3/16oz, 1/4oz, 5/16oz



(43S4-05-size) 4/0 hook,
5 per bag Sizes: 1/4oz (014),
3/8oz (038), 1/2oz (012)
(43S5-05-size) 5/0 hook, 5 per bag
Sizes: 1/4oz (014), 3/8oz (038), 1/2oz (012)
(43S6-04-size) 6/0 hook, 4 per bag
Sizes: 1/2oz (012), 3/4oz (034)

Yamamoto Split Shot Hook
(53-15-size)



Sizes: #7, #6, #5, #4, #3 (1/0 equiv),
#2 (2/0 equiv), #1 (3/0 equiv)

Snagfree Tube Weight
(35S-qty-size)



Sizes: 1/8 oz (018), 3/16 oz (316),
1/4 oz (014)
Qty: 1/8 oz (10), 3/16 oz (9),
1/4 oz (8)

Gamakatsu Swivel Hook (52SS-03-size)
#1, #2, and 1/0 sizes



The Swivel Shot eliminates line twist that's commonly associated with drop shotting and vastly improves rigging efficiency. Gamakatsu's revolutionary "Twist Free" design uses a premium swivel above the hook, a super-sharp Gamakatsu offset point Octopus hook strong enough to winch big bass out of slop.

FLW Pro Shinichi Fukae was instrumental in the development and testing of Gamakatsu's Swivel Shot and shared that it has been an essential element in his tournament success. We recommend this product with the following Yamamoto products: Shad Shape Worm, Pro Senkos and Thin Senkos.



Insider Head (35I-05-size)
Sizes: 1/8 oz (018), 3/16 oz (316),
1/4 oz (014)
Owner 3/0 Lite Wire

Hooks *All hooks come 5-6 per bag unless otherwise noted.

Rig'N Hook™ (58-size)
Features short shank, wide bite and Cutting Point™. Black Chrome finish, Owner hook.



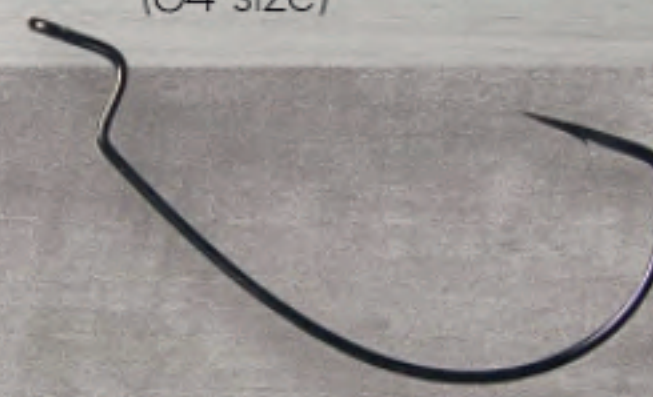
Sizes: #1, 1/0, 2/0, 3/0, 4/0, 5/0*

Offset EWG Extra Wide Gap (63-size)



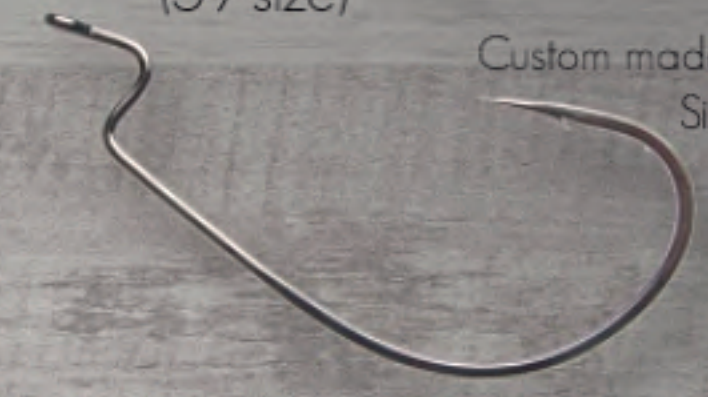
Gamakatsu Hook
Sizes: #1, 1/0, 2/0, 3/0, 4/0, 5/0*

Super Line Offset EWG Extra Wide Gap (64-size)



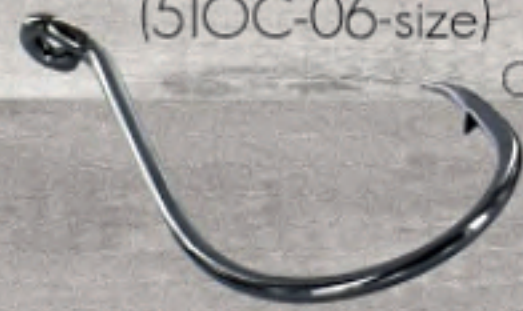
Gamakatsu Hook
Sizes: 2/0, 3/0, 4/0, 5/0, 6/0

Yamamoto Sugoi® Hook (59-size)



Custom made by Gamakatsu
Sizes: #2, #1, 1/0, 2/0, 3/0, 4/0, 5/0

Gamakatsu Octopus Hook (51OC-06-size)



Gamakatsu's Octopus Hook features a short-shank, upturned eye, offset bend and an extremely sharp point for quick penetration. Sizes: 1/0, 2/0, 3/0, 4/0, 5/0

Finesse Wide Gap Weedless (51W-05-size) \$7.39



Gamakatsu Hook
Sizes: 1/0, 2/0, 3/0, 4/0

Owner TwistLOCK Hook (59TL-size)



Sizes: 2/0, 3/0, 4/0, 5/0, 6/0

Owner TwistLOCK Lite Weighted Hook (59TLLW-size)



3/32 or 3/16 oz weight
Sizes: 4/0, 5/0, 6/0

Straight Shank Round Bend Wide Bite (49-size)



Round bend provides a wide bite for superior hooking and holding power. Gamakatsu hook. Sizes: 1/0, 2/0, 3/0, 4/0*

Straight Shank Black (54-size) \$3.56



Standard straight shank black worm hook. Gamakatsu hook.

Sizes: 1/0, 2/0, 3/0, 4/0, 5/0*



Owner TwistLOCK Lite Hook (59TLL-size)
Sizes: 2/0, 3/0, 4/0, 5/0, 6/0

Straight Shank Heavy Cover Worm Hook (51HC-04-size)

Standard straight shank black worm hook. Gamakatsu hook. Four to a bag. Sizes: 3/0, 4/0, 5/0

Jigheads

Round Ball Head (42-05-size)

Owner 3/0 Lite Wire Super Needle Point hook. Sizes: 1/16oz (116), 1/8oz (018), 3/16oz (316), 1/4oz (014) Qty: 5



Hula Grub Head (35-05-size) \$3.69

Owner 4/0 Super Needle Point hook. 1/4oz has 3/0 hook. Sizes: 1/4oz (014), 3/8oz (038), 1/2oz (012) Qty: 5



Weedless Jighead (66-03-size) \$3.69

Owner 5/0 Super Needle Point hook. Sizes: 1/4oz (014), 3/8oz (038), 1/2oz (012), 5/8oz (058) Qty: 3



***Flippin' Head (67-02-size)**

Custom Gamakatsu Heavy Wire Hook. 4/0 on 1/4 and 3/8oz, 5/0 on others. Sizes: 1/4oz (014), 3/8oz (038), 1/2oz (012), 3/4oz (034), 1oz (10) Qty: 2



Football Head (44-05-size)

Owner 5/0 Super Needle Point Hook. Sizes: 3/8oz (038), 1/2oz (012), 3/4oz (034), 1oz (10) Qty: 5



***Football Head (44G-05-size)**

Exclusive Gamakatsu 4/0 Heavy Wire 35-degree hook. Corrosion resistant black chrome hook. Sizes: 3/8oz (038), 1/2oz (012), 3/4oz (034), 1oz (10) Qty: 5



44G-03-size
Size: 1 1/2oz (112) Qty: 3

Football Head (44W-04-size)

Exclusive Gamakatsu 4/0 Heavy Wire 35-degree hook. Corrosion resistant black chrome hook.



Sizes: 3/8oz (038), 1/2oz (012), 3/4oz (034), 1oz (10) Qty: 4

Fishing Rods



Yamamoto Spinning Rod

6'6" Spinning Rod (22-SDS-3)

The custom-made one-piece 100% graphite rod blank is IM8 from the butt to the first guide to provide power for unsurpassed fightability. Hooksetting flexure is configured within the IM7 midsection, and more guides than normal in the rod's midsection aid in an increase of hooking power. Seven high-quality Fuji Silicon Carbide Concept guides plus matching tritop. The tip section is IM6 for unsurpassed sensitive feel. The rod is one piece and perfectly seamless.

Light Action, 4-8 lb line, 1/8-3/8 lure (short handle)



Yamamoto 7' Titanium Guide Spinning Rod

Designed Specifically for use with braided line

These 7' rods use a high modulus blank with 9 Titanium guides (8 + tip) and a Hypalon handle making them light weight and extremely sensitive. The Hypalon grip is distinctively stylish. Not to be confused with EVA typically seen on less expensive rods, Hypalon is most commonly used on high quality saltwater rods for it's durability and wet grip strength, which is superior to cork.



21-SPT-2 Medium Light
Lure 1/16 - 5/16, Line 4 - 10

21-SPT-3 Medium
Lure 1/8 - 3/8, Line 6 - 12

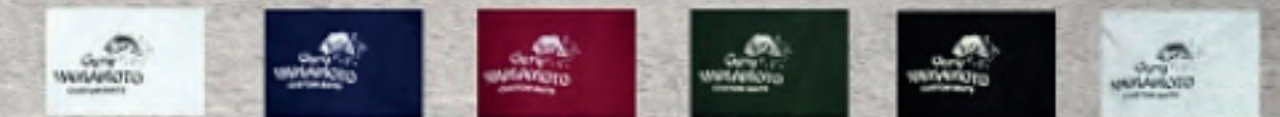


GYCB Logo Pullover Hooded Sweatshirt (28-SWT-size-color)

Heavyweight 7.75-ounce 50/50 cotton/poly blend with a kangaroo pouch pocket on the front, this GYCB logo pull-over sweatshirt will keep you warm on the water! GYCB logos on front and back.

Sizes: M, L, XL, XXL, XXXL (3XL available in Ash, Black and Navy only)

Colors: White, Navy, Maroon, Forest, Black, Ash

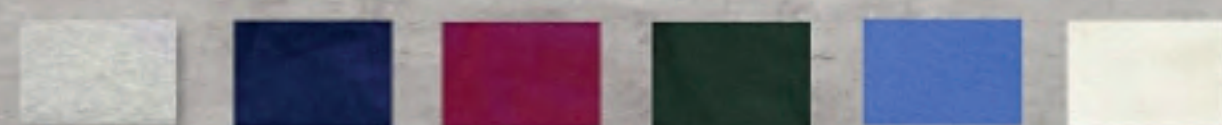


Short-sleeved T-Shirts (27-size-color)

100% cotton, easy-wearing pocket T-Shirt. Proudly displays the small Gary Yamamoto Logo on the front and a large logo on the back.

Sizes: S, M, L, XL, XXL

Colors: Ash (also 3XL), Navy Blue, Cardinal, Forest, Royal Blue, Sand



Long Sleeved T-Shirt (27-LS-size-color)

For early and late season fishing trips, or if you just need a little more sun protection, try our 100% heavy weight cotton long-sleeved tee. YAMAMOTO emblazoned down the sleeves. Yamamoto logo on front and back.

Sizes: M, L, XL, XXL, XXXL

Colors: White, Navy, Maroon, Forest, Black, Ash



GYCB Logo Kanji Long-Sleeve T-Shirt (27-LS-size-kanji)

Yamamoto's latest long-sleeve t-shirt, designed by the graphic artists at Topwater Clothing and featuring their Soft Cotton t-shirt. The Kanji script on the sleeve represents "Yamamoto".

Available in sizes M, L, XL and 2XL

GYCB LOGO Flexfit Fitted Baseball Cap \$21.19 - 25-FLX6597-size-solid color / 25-FLX6599-size-accent color
 Sport the Yamamoto Logo on a Flexfit Cool and Dry Sport and Team hat! These fitted hats come in two sizes (small/medium and large/extra large) in four solid colors as well as four accented color options.



Red

Solid Colors



Black



White



Royal

Accent Colors



Black/Red



Black/Gold



Gray/Black



Royal/White

FlexFit Hat Sizes:
 S/M - 6 3/4" - 7 1/4"
 L/XL - 7 1/8" - 7 5/8"

GYCB LOGO Kati Ultra Brushed Baseball Cap
 (25-KT9228-color)

Ultra brushed cotton twill, structured, mid-profile, six-pane, pre-curved sandwich visor, self fabric Flex-Strap™



Stone/Black

Black/Camo



Black/Gold



Black/White



Khaki/Blk/Khaki



Navy/White



GYCB LOGO Flexfit Fade Structured Baseball Cap - 25-FLX6199-size-color

These structured hats come in two sizes (small/medium and large/extra large) in four "fading" colors on a black background.



Black/Gold



Black/Green



Black/Silver



Black/Red

Low-Profile Baseball Cap (25-KTA130-color)

Low-profile GYCB logo baseball cap

Colors: Black, Forest, Khaki, Maroon, Navy, Pink, Red, Royal Blue, White, Ladies Pink Camo



(25-KTCA280-pinkcamo)



GYCB Logo Visor (25-KTVC500-color)

GYCB Logo Visor

Colors: Black, Forest, Khaki, Maroon, Navy, Pink, Red, Royal, White



Embroidered Bass & GYCB Logo Baseball Hat (25-KT-Bass)



A rounded look with a low profile.
 Colors: Khaki