

GLOMEX[®]

The best in marine antennas

OMNIDIRECTIONAL TV ANTENNA INSTALLATION GUIDE

NASHIRO * AGC

CALCHA * AGC

*** ALTAIR AGC**



Mod. V9112AGC



Mod. V9126AGC



Mod. V9125AGC

Table of contents

Tv antenna Installation and Location

Twist-on F connector Installation Instruction

«F» Connection Installation

50023/14 Amplifier Installation

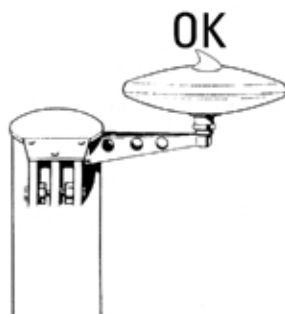
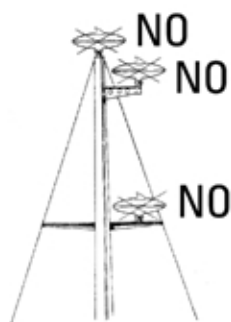
V9112AGC, V9125AGC, V9126AGC - Features and Operation

Pinnacle Installation

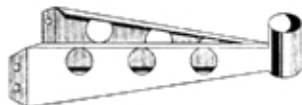
Installation Trouble Shooting Guide

Weee

SAILBOAT ANTENNA INSTALLATION LOCATION



V9173 TV Masthead Mount Bracket for V9112AGC - V9123
Mathead Mount Bracket for V9125AGC and V9126AGC



POWER BOAT ANTENNA INSTALLATION LOCATION



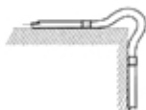
Installation Notes:

- Mounting a TV antenna next to or just above a flat metal surface may cause "ghosting" on the picture.
- Keep clear the antenna from any obstructions.

COAXIAL CABLE INSTALLATION

Installation Notes :

- Do NOT bend the coax cable in a radius less than 2^{1/2}"
- Use screw-up wire ties to secure to bulkheads
- Do NOT staple coax to bulkhead



TWIST-ON F CONNECTOR INSTALLATION INSTRUCTIONS

①  F Connector Crimp

② 

③ 

①  F Connector twist-on

② 

③ 

④ 

COAX SPLICING

Splicing Installation Notes: It is always better to run new coax cable of the proper length and quality, as the 20 mts supplied with the antenna, without splices.

This will provide the best performance from your Glomex TV antenna.

The coax cable should never be spliced wire-wire.

When splicing with connectors, use only 75 Ohm connectors only.

Remember each splice represents again looss of + 1.5 d.B or more.

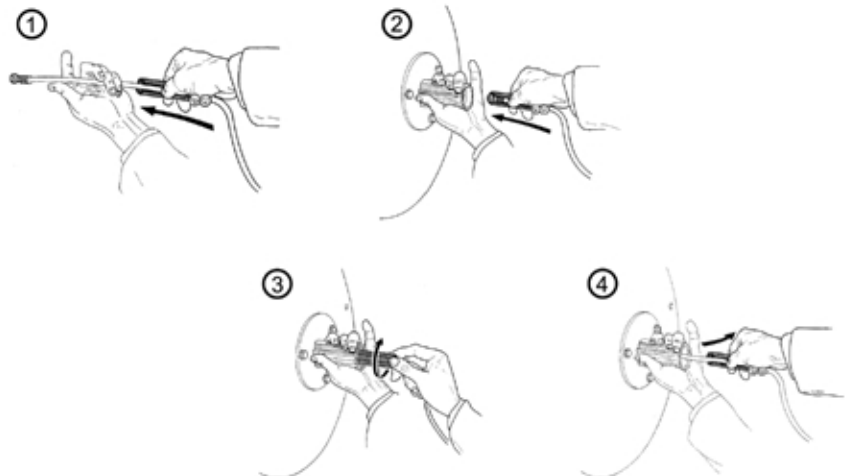


NO



OK

"F" CONNECTION INSTALLATION

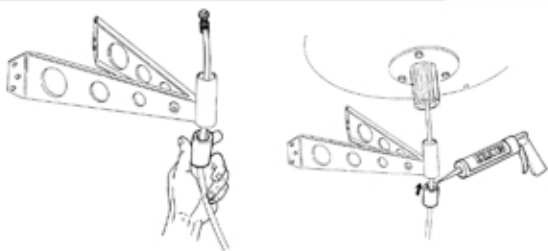


V9173TV AND V9123 TV MASTHEAD MOUNT GASKET INSTALLATION

Installation Notes:

A tool to connect the "F" connector is included in your pack.

1. Slip tool over coax with "nut end" toward the connector. Make sure the coax cable is fed throughout the mount before connection is made.
2. Slide the tool over the connector.
3. Turn the connector to attach it to the receptacle inside the antenna base.
4. Remove the tool and mount the antenna on the boat mount.



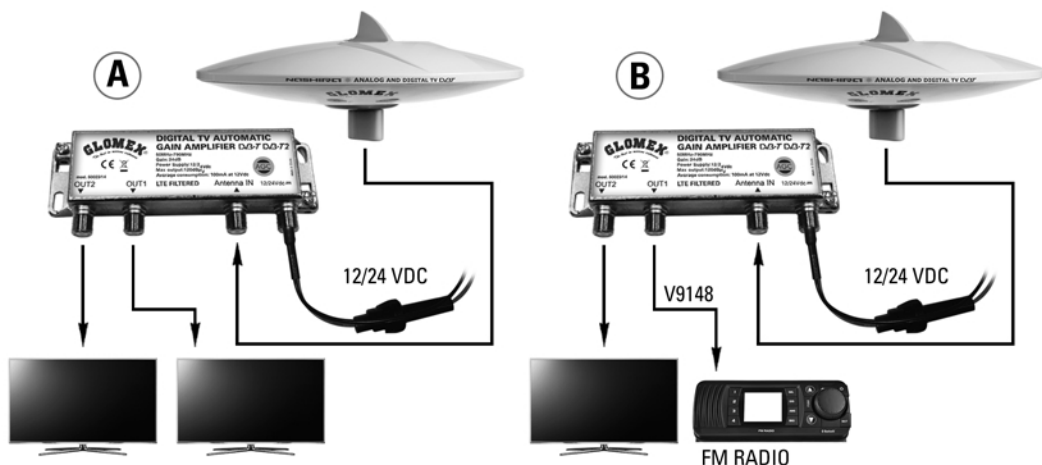
AMPLIFIER INSTALLATION 50023/14 FOR NASHIRA AGC, TALITHA AGC, AND ALTAIR AGC



Amplifier Installation Notes

1. Amplifier should be mounted in a dry well ventilated area.
2. Make sure all connections are secure so they do not become loose underway.
3. 50023/14 amplifier automatically adjust the TV signal gain for ensuring the best possible reception everywhere.

NASHIRA AGC, TALITHA AGC, AND ALTAIR AGC FEATURES AND OPERATION



Red wire = +12V DC White wire = +24V DC Black wire = Negative

SHARK FIN INSTALLATION FOR NASHIRA AGC, AND TALITHA AGC

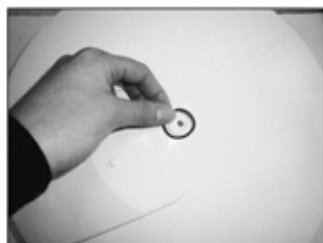


Fig. 1



Fig. 2



Fig. 3



Fig. 4



Fig. 5



Fig. 6

Thanks to vertical antenna inside the "shark fin", Nashira and Talitha can receive TV signals vertically polarized. Put the O-ring in the hole on the radome (fig. 1 e fig. 2). Screw the "shark fin" in the hole (fig. 3) clockwise and in perpendicular position (fig. 4). Screw it (about 7 turns) (fig. 5) until it is well tightened by the rib in relief (fig. 6).

Where I best to install my new Glomex Antenna?

Your antenna should be mounted free and clear of any obstruction and as high as possible.

If I mount it on a radar arch, will the array interfere with the reception?

Yes and on the other way around. Make sure that the Glomex dome is either above or below the radar array and never on the same "plane" as the array.

What cable should I use?

It is important to use only RG6 Twin Screen low loss cable. We recommend that you use only a DSS quality cable.

How can I tell if a cable is either low loss or not?

A high quality low loss cable will have a white foam center insulator where a lower grade of cable will be opaque and solid.

What type of connector should I use?

Use only "F" gold connectors for TV wire 6.8 mm or a wire with the same diameter of the used one.

How do I get the "F" connector into the base of the antenna?

Included in your Glomex Marine TV Antenna package is a flack plastic-tool; this tool is designed to slide over the coax and grip the connector so it maybe twisted on.

Where should the amplifier be installed?

The amplifier should be installed in a dry well ventilated place. The innovate amplifier can be placed in a hidden location inside the boat and it does not need a manual adjustment.

What power supply will need to power my amplifier?

You can use either a 12 Vdc or you can purchase the V9117 220 V dc power adapter.

Is it possible to connect an FM radio to my Glomex TV antenna?

Yes, by installing a FM cable (code: V9148).

How many TV Can I use with one TV antennas?

You can use 2 TVs. By using the 50022/10 splitter (optional), you can use up to 6 TVs

Can the Glomex TV antenna be damaged by lighting?

No because of its unique design and no active parts in the dome; so it won't attracted it. Anyway, if it fall down very close to the boat it might damage it.

My antenna is experiencing a lot of "ghosting".

Check and make sure that it is not mounted on a flat metal surface as this will cause reflection of the signal and thus "ghosting".

In a sailing boat, is the masthead the only place where I can mount the antenna?

It is the best place to install it. Make sure you use a Glomex V9173TV masthead bracket for your installation.

I have installed the antenna and I don't get the local station. What should I do?

First, gather a list of the broadcasting station that you should receive in that area. Next, turn on the TV (and turn on the Digital Terrestrial Decoder if it's not integrated on the TV), Then, go to menu, select signal research.

Why do NOT I have to adjust the gain control?

50023/14 amplifier automatically adjust the signal gain. So, it makes your life easier and more comfortable. In the marine you have many different factors affecting your reception. If you are very close to a broadcast tower you will need less gain if any. The further you are from the tower, the more gain you will need. In marina with a lot of sailboats and larger yachts, you will have a lot of signal reflections and you will have the ability to adjust the gain accordingly. With Nashira AGC, Talitha AGC, and Altair AGC you do not need to make anything, just relax and watching TV.

I can see no difference in the picture .

Check and make sure you have power going to amplifier (check your electrical panel and make sure the proper breaker is ON).

I still getting a lot of interferences in my pictures

Go around your boat and check the connections you have installed. Make sure you have connected the connectors properly.

How do I tell if I have installed a connector properly?

Make sure that the central conductor is long enough to insert into the connector on the TV or amplifier. Also check and make sure there is no shield touching the center connector in the cable. If there is a "short" you will see a strand touching the center wire.

I have a sailboat but my coax is not long enough to reach the point that I want to install my amplifier.

You may connect an extension to the coax by using an F 75-Ohm connector. For every connection you put on line, you lose gain and thus degrade your reception. This holds true even with the proper connectors. We strongly recommend that you run a new coax that is the proper length. It may be more work but well worth it.

I have a large number of TV and I cannot get good pictures.

If you have more than 2 TV you should be using an inline amplifier to boost the signal through the boat (code: 50022/10).

Can I receive FULL HD and DVB-T2 TV signals?

Yes, using a suitable TV.