

## INSTRUCTION SHEET : Sea Hawk-R LED Deck Floodlight for : P/N 2LT 980 573-0XX

Hella Marine LED lamps offer many advantages over incandescent lighting including significantly reduced power consumption, reduced heat and a high resistance to shock, vibration and moisture for long service life in the harsh marine environment.

**Product specifications:**

<b>Light Source</b>	LED
<b>Light Output</b>	~550 lumen (White) / ~380 lumen (Warm White)
<b>Color Temperature</b>	5000K (White) / 3000K (Warm White)
<b>Operating Voltage</b>	Multivolt™ 9-33V DC
<b>Power Consumption</b>	7W (0.6A@12V / 0.3@24V)
<b>Cable</b>	Pre-wired with tinned marine cable
<b>Housing Material</b>	'Non-metal' Thermally conductive housing
<b>Lens Material</b>	Heavy duty Grilamid®
<b>Bracket Material</b>	Polished 316 stainless steel
<b>Degree of Protection</b>	IP 67 – Completely sealed



**Electromagnetic Compatibility (EMC)**

This LED lamp is an electronic device. The electrical circuits contain components that suppress possible interference, both emission as well as susceptibility, to the limits prescribed in international regulations.

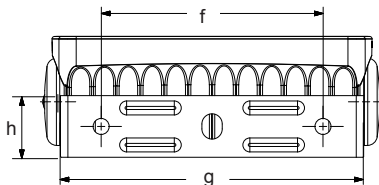
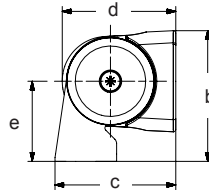
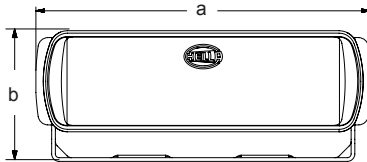
**Wiring Colour Coding**

LED modules are polarity conscious. Reverse polarity will not damage this product but will inhibit its function. HELLA recommends wire connections be soldered, and heat shrink tubing applied to seal the joint. Lamp must be protected by a fuse rated at 5 amperes maximum.

Cable colour	Connect to	Power Consumption
Red	Positive (+)	7.0 watts
Black	Negative (-)	

**Angle adjustment**

Once the lamp is installed, the swivel resistance can be adjusted by gradually tightening the end cap screws located on each side. It is important that both friction mounts are adjusted to apply similar friction and that the screws are not over tightened.



**Dimensions**

- a = 136mm / 5.35"
- b = 53.0mm / 2.08"
- c = 49.0mm / 1.93"
- d = 46.0mm / 1.81"
- e = 32.5mm / 1.28"
- f = 90.0mm / 3.54"
- g = 123mm / 4.84"
- h = 25.0mm / 0.98"

