



2020 HUMMINBIRD® PRODUCTS

 **HUMMINBIRD®**



THIS IS WHERE YOU COME TO SEE THINGS MORE CLEARLY.

Nothing clears the mind like a day on the water. And nothing sharpens your focus like a challenge. Whether it's chasing the next trophy, or staying a step ahead of your competition, we build innovative technologies to shed new light on the world below, narrow your search and put an end to guesswork. All so you can accomplish what you came here to do. No wasted casts. No doubt.



CONTENTS

- 4 | One-Boat Network
- 6 | Fish Finder Guide
- 8 | Sonar
- 16 | Mapping
- 22 | SOLIX Series
- 28 | HELIX Series
- 33 | PiranhaMAX
- 38 | ICE Series
- 44 | Accessories

PAGE 03 USE PAGE ABOVE IS COMMON



WELCOME TO THE ONE-BOAT NETWORK

Humminbird® and Minn Kota® share more than just a physical address. We share a passion for fishing and a mission to craft gear that lets you enjoy your time on the water even more. That's why we created the One-Boat Network™: a commitment to make the most advanced fishing gear even better, by making it work together. Our engineering teams constantly look for ways our products can seamlessly integrate and communicate, unlocking more features, capabilities and potential for anglers everywhere.



WHAT CAN YOU DO WITH THE ONE-BOAT NETWORK?



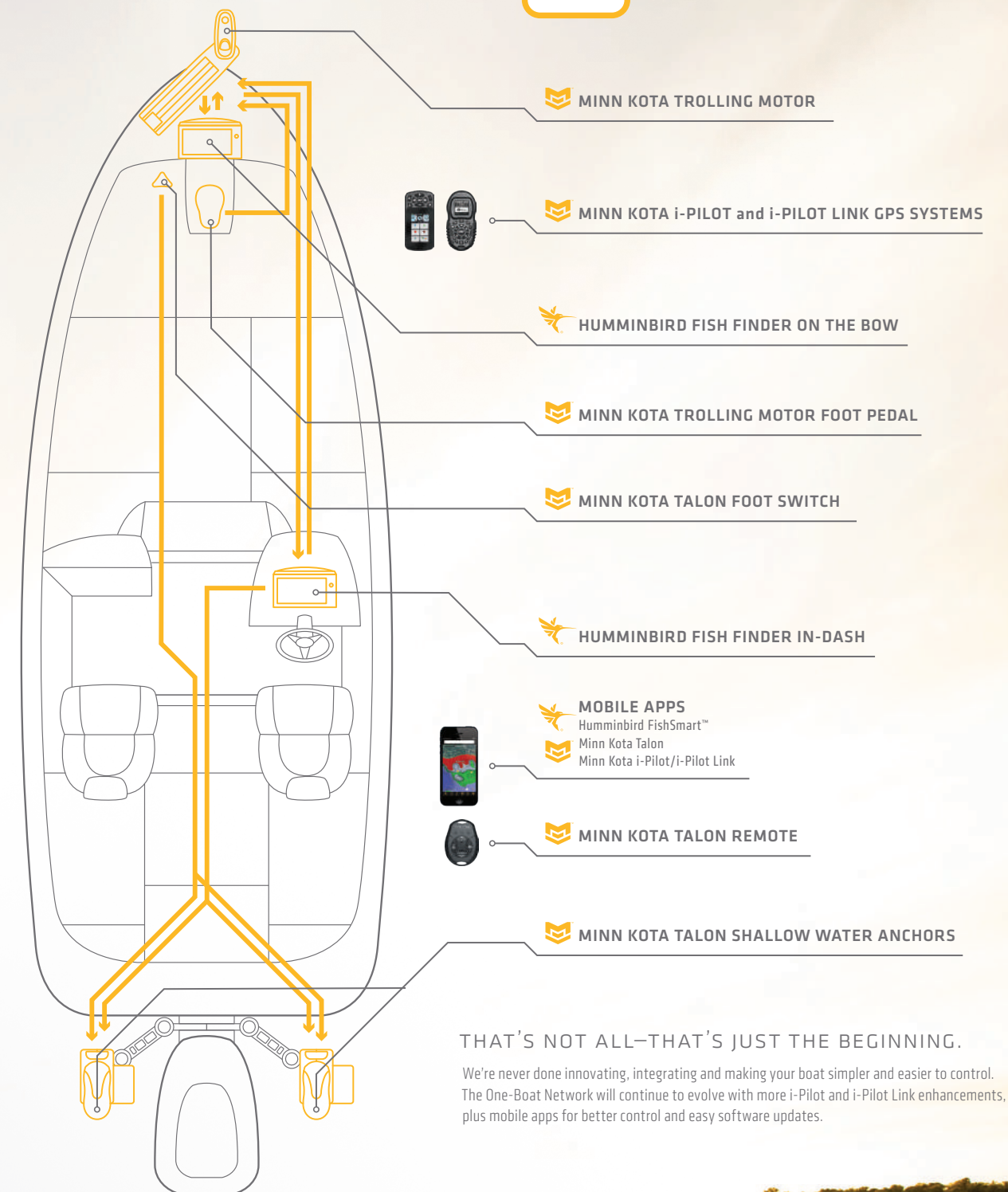
Nothing beats the clarity and detail of MEGA Imaging® on your Humminbird fish finder. So we made it easier to get that image to the screen. New Minn Kota trolling motors with built-in MEGA Down Imaging® or MEGA Side Imaging® have a MEGA Imaging transducer housed right in the lower unit of the motor. No messy wires, more crystal clear images and a better view of the water below that lets you find what you're after.



Hit Spot-Lock™ on your Minn Kota trolling motor to stay on any fishing spot. If it's productive, store that Spot-Lock using i-Pilot® or i-Pilot Link™. Later, select the Spot-Lock location from your Humminbird fish finder and tell your motor to take you there. Your motor can drive the boat for you, landing you back at your spot so you can fish the honey hole all day long.



When you find your spot, there's not always time to get to the back of the boat. So we worked together to make Minn Kota Talon shallow water anchors controllable from anywhere on the boat. Use the interface on your Humminbird fish finder, or the i-Pilot or i-Pilot Link remote control, to lower Talon, raise it, change anchoring modes and more—no matter where you are.



THAT'S NOT ALL—THAT'S JUST THE BEGINNING.

We're never done innovating, integrating and making your boat simpler and easier to control. The One-Boat Network will continue to evolve with more i-Pilot and i-Pilot Link enhancements, plus mobile apps for better control and easy software updates.



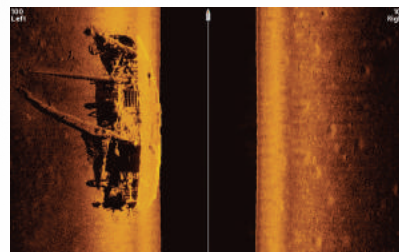
HUMMINBIRD

MEGA IMAGING

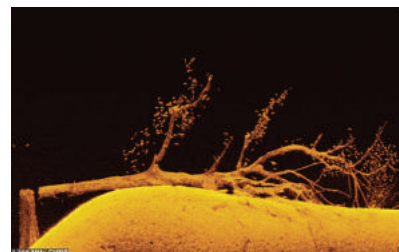
BRING FISH INTO FOCUS.

How well do you know the waters you fish? Not as well as you might think. From coast to coast and everywhere in between, more anglers are finding structure and fish they didn't know were there, thanks to the clarity of MEGA Imaging, pioneered by Humminbird and built into select SOLIX and HELIX Series models. Using this high-frequency sonar, you can easily distinguish fish from structure, see the direction fish are facing and even target individual species. And with new MEGA Imaging+, there's absolutely no place left to hide, thanks to extended range and depth, plus 20% more detail than MEGA Imaging. Choose MEGA Side Imaging+™ for an incredible view to the left and right of your boat. Opt for MEGA Down Imaging+™ for a crystal clear picture below your boat.

MEGA SIDE IMAGING+

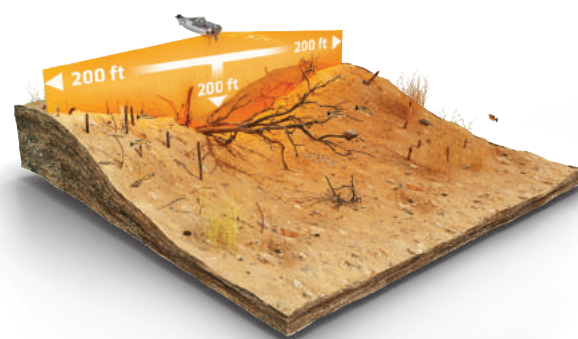


MEGA DOWN IMAGING+



EXTENDED RANGE AND DEPTH

Broaden your search and increase your catch rate. You'll now have coverage out to 200 feet on either side of your boat with MEGA Side Imaging+ and 200 feet below your boat with MEGA Down Imaging+. To scan even deeper and wider, use the 455 kHz beam of traditional Side Imaging and Down Imaging to reach depths of 400 feet, and up to 400 feet on either side of your boat.



MEGA IMAGING NOW BUILT INTO MINN KOTA TROLLING MOTORS

See what your trolling motor sees. Humminbird MEGA Side Imaging and Down Imaging transducers are now built into the lower unit of Minn Kota Ultrerra® and Ultrex motors, while built-in MEGA Down Imaging is available on Terrova® and Fortrex® models. Just connect one of these motors to a compatible SOLIX or HELIX, including one of our Control Head Only units, for the clearest, most detailed images ever, with no messy wires. Learn more at MinnKotaMotors.com.

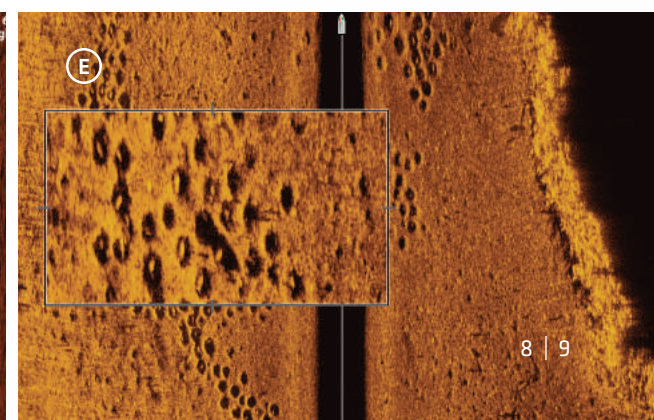
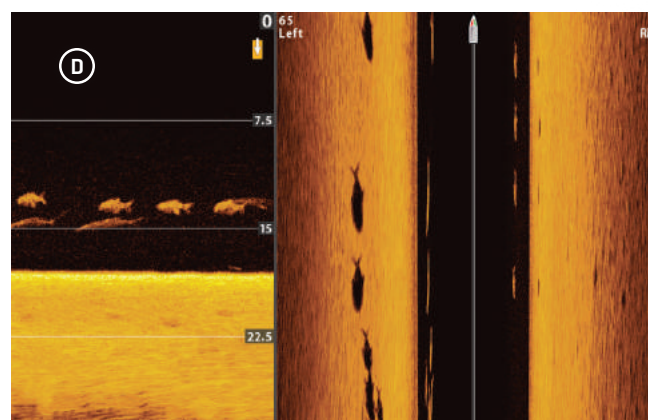
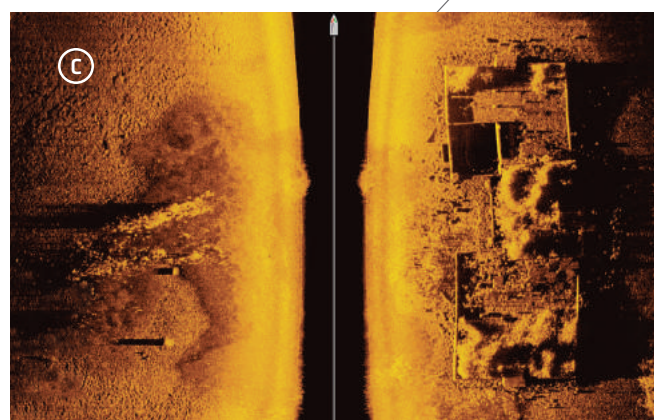
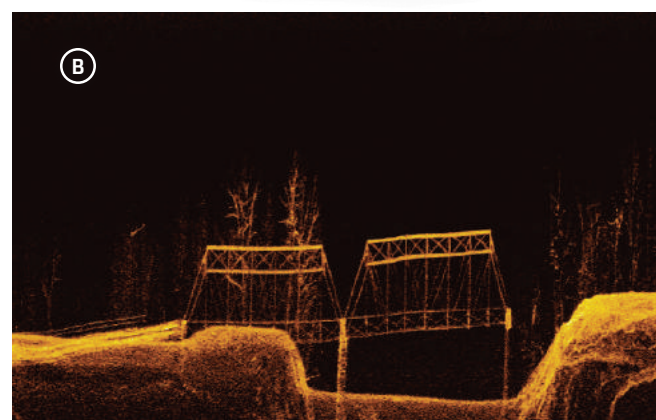
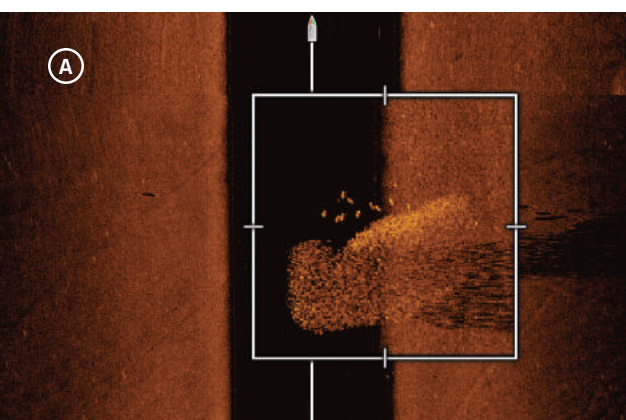
MINN KOTA



- (A) MEGA Side Imaging: Observe game fish (individual marks) attacking a school of bait fish (cluster of small marks).
- (B) MEGA Down Imaging+: Find structure as deep as 200 feet, like this submerged bridge located 107 feet below the surface.

- (C) MEGA Side Imaging+: Clearly identify weedbeds (lower left) along with the detailed wall of an old foundation, and even the steps leading into the house.
- (D) MEGA Down Imaging+ (left) and MEGA Side Imaging+ (right): View individual Pompano, noting head and tail fin for clear indication of their direction.

- (E) MEGA Side Imaging+: See individual fish beds and smallmouth bass holding near them.



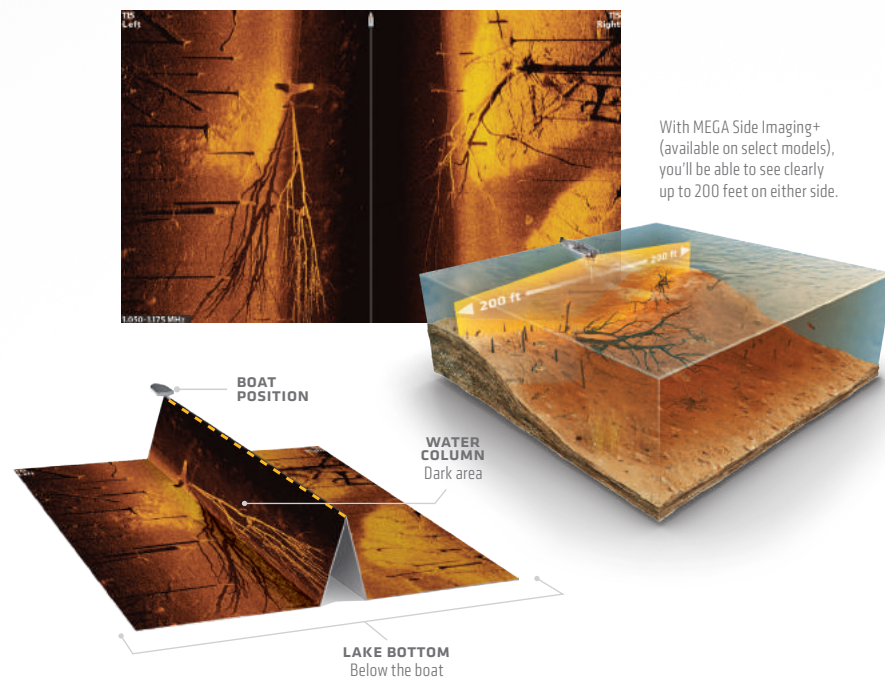
HUMMINBIRD

MEGA IMAGING

INTERPRETING YOUR RETURNS.

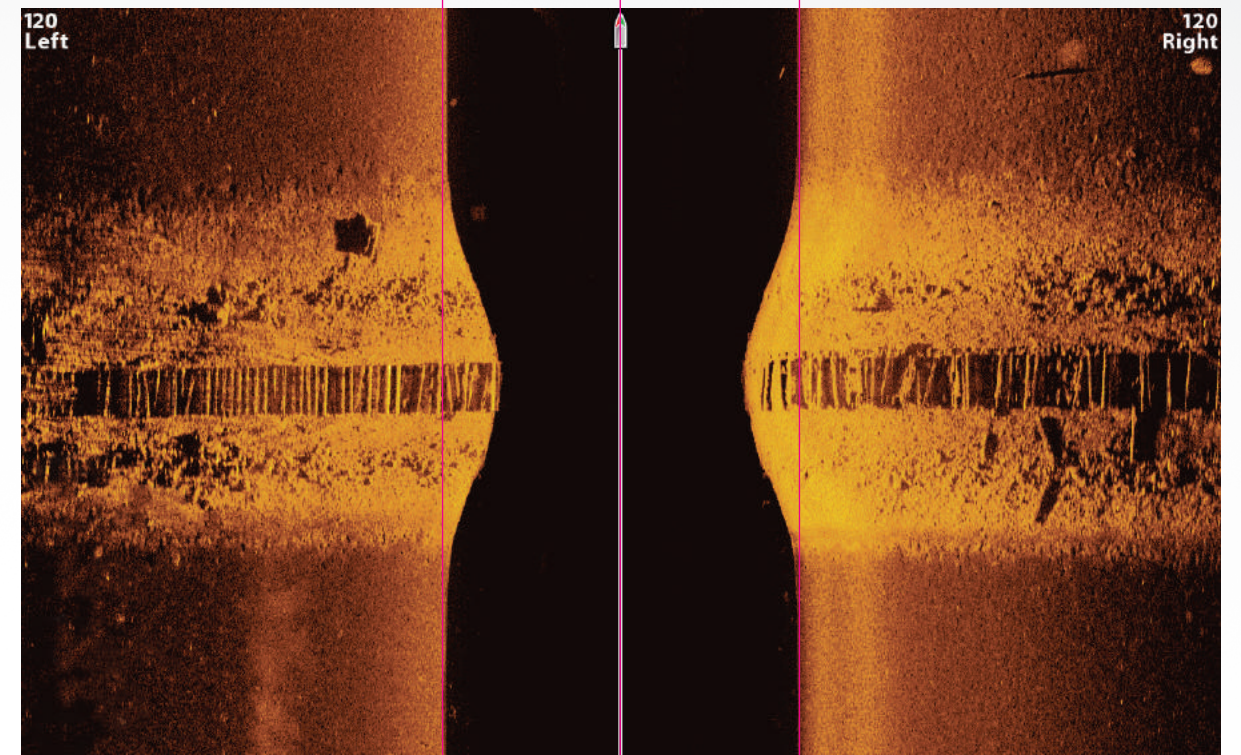
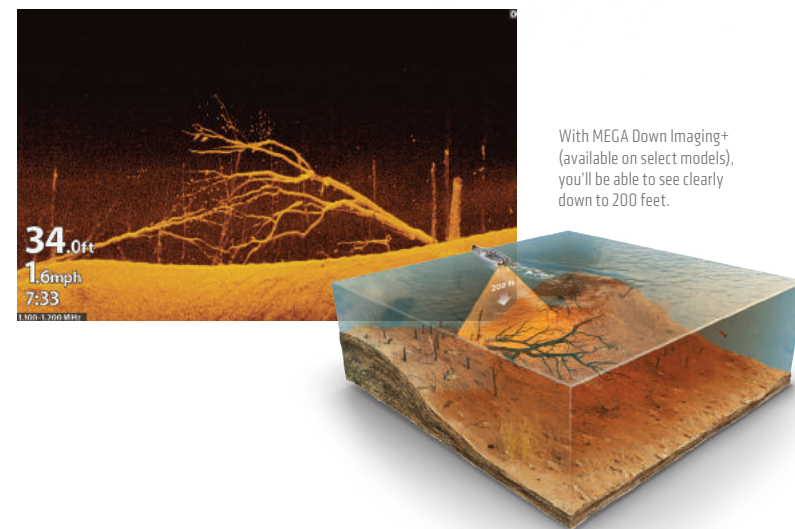
MEGA SIDE IMAGING+

Humminbird Side Imaging+ uses an ultra-thin beam to take a “sonar snapshot” of the area to the left and right of your location. The return image for this slice is then added to the images taken immediately before and after to build an incredibly detailed view of the bottom. To help visualize how Side Imaging+ works, fold the screenshots on page 11 as indicated. The dark, center portion of the screen represents the column of water below your boat. The lighter portions on the far left and right of the screen show you the bottom below and to the left and right of your boat. Keep in mind, Side Imaging+ is a record of the water and terrain your boat has already passed over. Structure will appear as a clearly defined bright shape with an adjacent dark sonar “shadow.” Generally, long shadows indicate the object is tall and small shadows indicate something short.

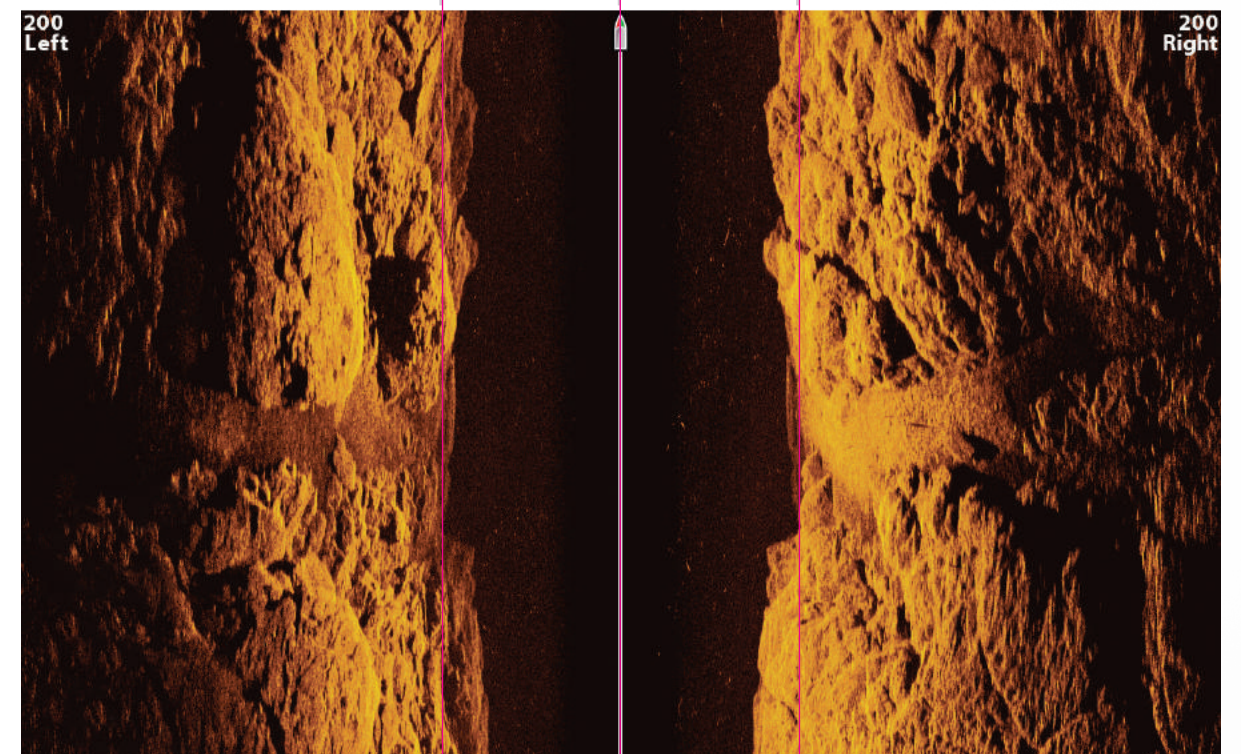


MEGA DOWN IMAGING+

Like Side Imaging+, Humminbird Down Imaging+ uses a razor-thin, high-frequency beam to create picture-like images of structure, vegetation and fish. But unlike Side Imaging+, Down Imaging+ returns are oriented identically to traditional, down-looking sonar returns—with the most-recent information appearing on the right side of the screen.



FOLD FOLD FOLD



NEW

HUMMINBIRD

MEGA 360 IMAGING

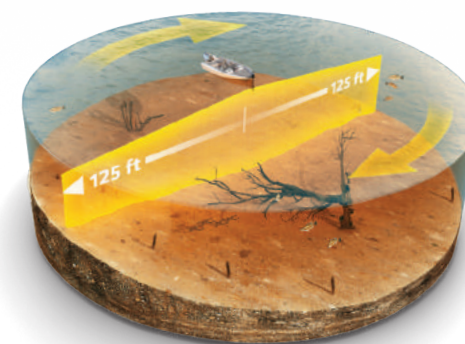
ENTER THE CIRCLE OF TRUST.

Surround yourself with more detail than ever before. New MEGA 360 Imaging sweeps up to 125 feet in every direction around your boat to deliver the clearest images you've ever seen of structure, the bottom and fish, even while you're sitting still. That means more accurate casts, more unforgettable moments and more incredible MEGA Imaging—all around. MEGA 360 Imaging is compatible with SOLIX G2 Series and HELIX G3N Series fish finders equipped with MEGA Imaging+.



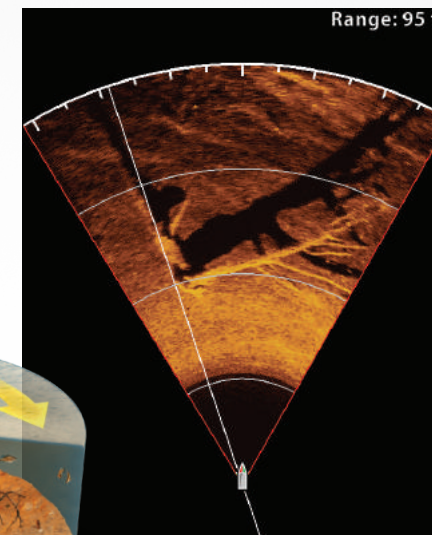
EVERY DETAIL IN EVERY DIRECTION

With MEGA 360 Imaging, we didn't reinvent the wheel. We redefined it, bringing the unmatched coverage of our 360 Imaging® technology into the megahertz range for next-level detail. Like underwater radar, the MEGA 360 Imaging beam rotates giving you a 360-degree view of the water that's constantly updating—with your boat at the center. Fish won't ever see you coming—allowing you to cast and hook fish before they even know you're there.



DIAL IN YOUR SWEEP AREA

Nothing beats the coverage and detail of MEGA 360 Imaging. You can customize your sweep area from 360 degrees down to 10 degrees. Use preset view options, like 45 degrees in front of your boat, to find and cast to productive spots without spooking fish.



TROLL SMARTER

Turn intel into action. Your MEGA 360 Imaging transducer shows you fish, and Minn Kota trolling motors can take you straight to them. MEGA 360 mounts directly to a Minn Kota Ultrex™, Fortrex, or Maxxum® trolling motor so you can steer without affecting your sonar return.

MEGA 360 IMAGING - ULTREX
MINN KOTA ULTREX TROLLING MOTORS
#411250-1

MEGA 360 IMAGING - FORTREX
MINN KOTA FORTREX OR MAXXUM TROLLING MOTORS
#411260-1



> See 360 Imaging products and accessories on page 48

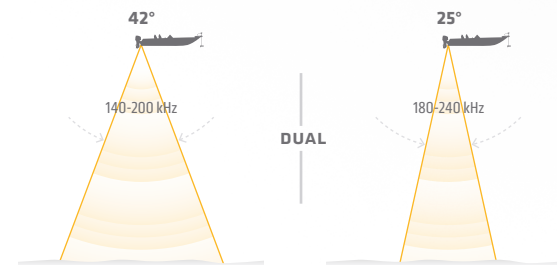


HUMMINBIRD

DUAL SPECTRUM CHIRP

BEGIN YOUR SEARCH WITH BETTER HARDWARE.

Don't let the pretty pictures fool you. Our proprietary, Low Q CHIRP transducer is the real hero. Using more coverage to detect fish, structure and the bottom, this workhorse makes possible the highly defined fish arches and clear target separation of new Dual Spectrum CHIRP Sonar. Ounce for ounce, pulse for pulse, it's the best sonar in its class. No contest. Available on select SOLIX G2 and HELIX G3 and G3N Series models.

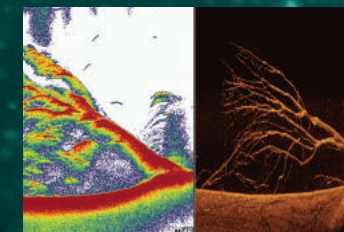
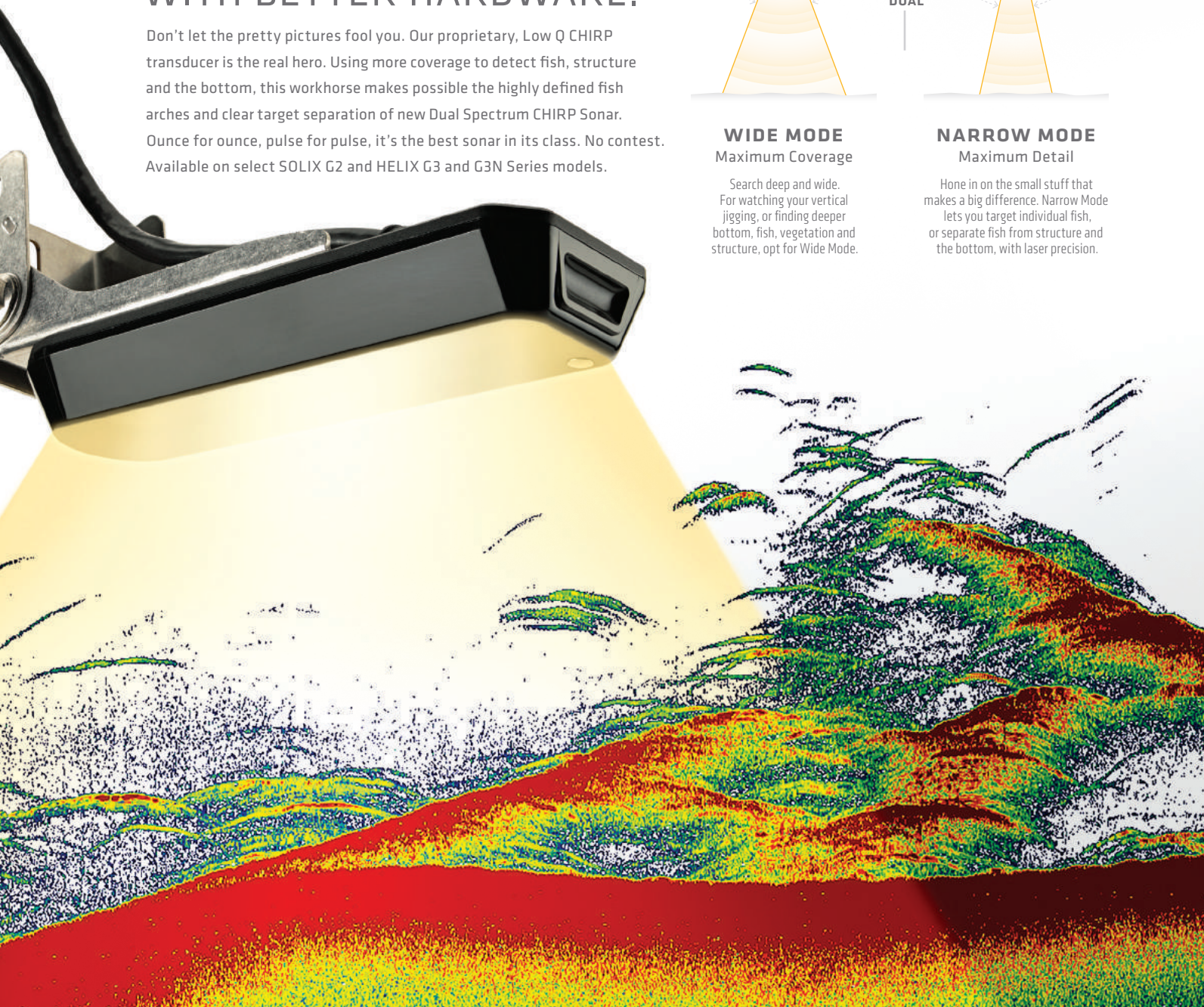


WIDE MODE Maximum Coverage

Search deep and wide. For watching your vertical jigging, or finding deeper bottom, fish, vegetation and structure, opt for Wide Mode.

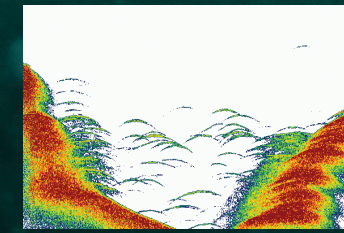
NARROW MODE Maximum Detail

Hone in on the small stuff that makes a big difference. Narrow Mode lets you target individual fish, or separate fish from structure and the bottom, with laser precision.



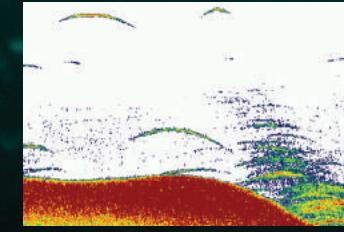
STRONG RETURNS WITHOUT NOISE

Stop seeing things that aren't there. A high signal-to-noise ratio translates to better defined targets, less clutter and greater certainty that what you're looking at on-screen is legit.



SUPERIOR TARGET SEPARATION

Separating fish from their habitat is the name of the game. And now, you'll be able to more easily tell the difference between bait and game fish, and nearby structure and vegetation.



CLEARLY DEFINED FISH ARCHES

We've got bad news for your arch nemesis. Large game fish will show up on your screen as long, well-defined arches, for quick identification and accurate lure presentation.

BUILT-IN

HUMMINBIRD

MAPPING

READY TO FISH, RIGHT OUT OF THE BOX.

Only Humminbird delivers the detail, accuracy and innovative, one-of-a-kind features to eliminate unproductive water and find the best fishing spots faster. These powerful built-in maps will make the most of any day on the water. Search less. Fish more.

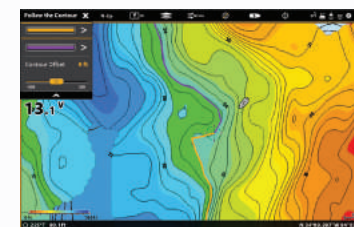
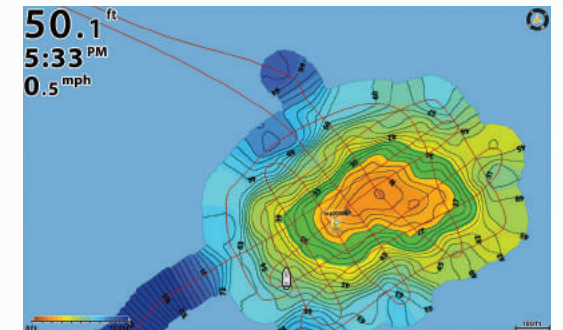


HUMMINBIRD BASEMAP

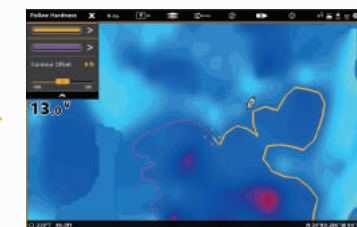
We've enhanced our standard Basemap to deliver more detail and a superior angling experience. The Humminbird Basemap is built into all SOLIX Series and GPS-equipped HELIX Series G3/G3N and G2/G2N models. Based on freshwater data from LakeMaster® and saltwater data from the most-trusted saltwater sources, these accurate maps provide you with a clear view of underwater terrain. Identify buoys, daymarkers, hazards, marinas and countless other navigation aids and points of interest with our comprehensive icon system. You'll also see contours, depth markings and, for coastal areas, spot soundings. On the water, confidence is key. And the Humminbird Basemap delivers.

AUTOCHART LIVE

Build richly detailed maps of your favorite fishing spots in real time with Humminbird AutoChart® Live, available on the SOLIX Series and all GPS-equipped HELIX Series models. Map the water as you drive the boat, with eight hours of built-in recording time. Once your map has been created, view it with vegetation, bottom hardness and depth contours to locate the best fish-holding areas. Also, use it with i-Pilot Link Follow and other patented Humminbird LakeMaster features. The future of digital charting has arrived. Better get on board.



DEPTH CONTOURS



BOTTOM HARDNESS



VEGETATION

AUTOCHART LIVESHARE

Get high detail, real-time updates and access to a global network. AutoChart LiveShare is a community-mapping resource allowing you to download the latest AutoChart Live mapping data from fellow anglers around the world and add it to your own map collection on your unit. You can also upload your own data if you choose.

CONTRIBUTE MAPS

Record chart data using AutoChart Live on your Humminbird, and save it onto a Zero Line SD card. Then, upload maps to your AutoChart LiveShare account.



ACCESS MAPS FREE

Download map data from the global community onto a Zero Line SD card. Insert the card into your Humminbird and start using depth contour information.

AUTOCHART ZERO LINE SD CARD

For easy storage and sharing of your AutoChart and AutoChart Live data, opt for the AutoChart Zero Line SD Card. See page 54 for more details.



AUTOCHART ZERO LINE SD CARD

#600033-1



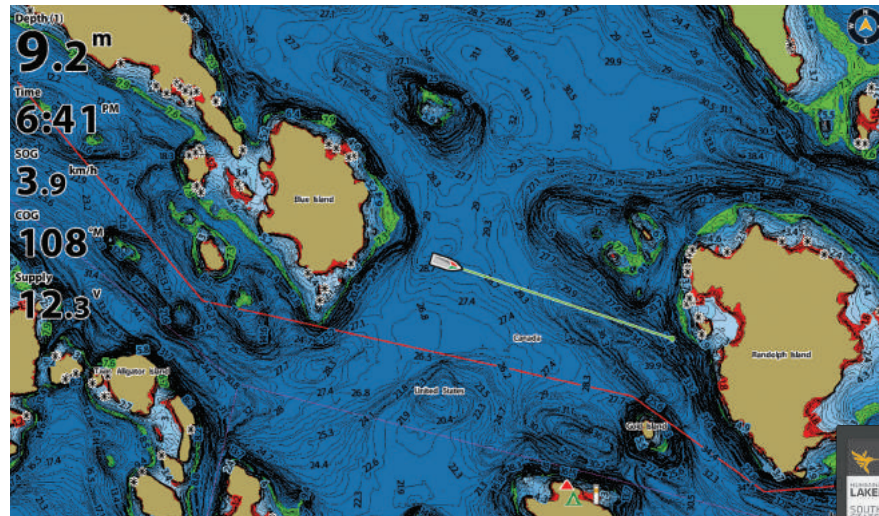
PREMIUM

HUMMINBIRD

MAPPING

TREASURE HUNTING STARTS WITH A GOOD MAP.

No matter where the journey takes you, only Humminbird gives you the detail, accuracy and innovative, one-of-a-kind features you need to eliminate unproductive water and find prize fishing spots faster. With Humminbird's premium cartography options, you'll make the most of every day on the water.

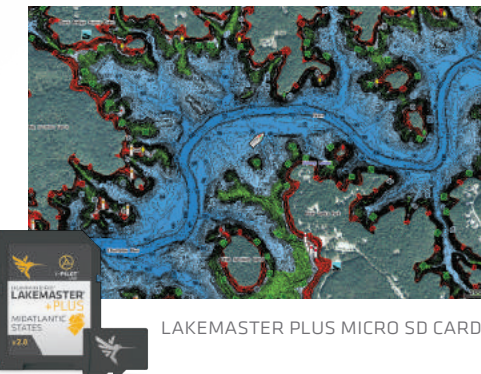


LAKEMASTER

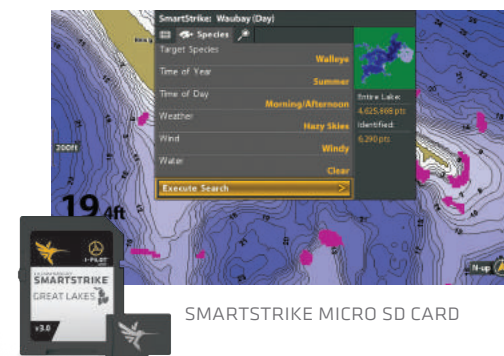
Upgrade to the unrivaled accuracy and detail of Humminbird LakeMaster mapping. From easy-to-read contours, to highlighted depth ranges, to scrollable lake lists, you'll have the tools you need to make every moment count. And, with an ever-growing list of available regions and lakes, plus recent innovations like LakeMaster PLUS and ChartSelect®, fish are running out of places to hide. Learn more at Humminbird.com/LakeMaster.



LAKEMASTER MICRO SD CARD



LAKEMASTER PLUS MICRO SD CARD



SMARTSTRIKE MICRO SD CARD

LAKEMASTER PLUS

For an added angling advantage, opt for Humminbird LakeMaster PLUS. This family of digital GPS maps gives you all the features of LakeMaster, with one key addition: aerial photography. View these high-detail images on your fish finder as a single layer, overlay it with LakeMaster contours, or overlay it with the full LakeMaster map for maximum detail. Now that's a major plus.

SMARTSTRIKE

Humminbird SmartStrike™ takes you straight to the action. Based on search parameters like season, time of day, temperature and targeted fish species, SmartStrike highlights areas of the lake map where fish are most likely to be located. SmartStrike cards also include high-definition LakeMaster contour information for the included lakes. Compatible with all SOLIX Series models, plus GPS-equipped HELIX G2/G2N and newer models.

AVAILABLE REGIONS

DAKOTAS/NEBRASKA
 LAKEMASTER V5 | #600013-3
 LAKEMASTER PLUS V1 | #600013-4
 SMARTSTRIKE V1 | #600034-1

GREAT LAKES
 LAKEMASTER V4 | #600015-7
 LAKEMASTER PLUS V2 | #600015-6
 SMARTSTRIKE V3 | #600035-3

GREAT PLAINS
 LAKEMASTER V6 | #600017-5
 LAKEMASTER PLUS V1 | #600017-4
 SMARTSTRIKE V2 | #600036-2

MID-ATLANTIC STATES
 LAKEMASTER V2 | #600043-3
 LAKEMASTER PLUS V2 | #600043-4
 SMARTSTRIKE V2 | #600047-2

MIDSOUTH STATES
 LAKEMASTER V5 | #600009-9
 LAKEMASTER PLUS V3 | #600009-8
 SMARTSTRIKE V4 | #600037-4

MINNESOTA
 LAKEMASTER V8 | #600021-7
 LAKEMASTER PLUS V3 | #600021-8
 SMARTSTRIKE V4 | #600038-4

NORTHEAST STATES
 LAKEMASTER V2 | #600045-3
 LAKEMASTER PLUS V2 | #600045-4
 SMARTSTRIKE V2 | #600048-2

ONTARIO
 LAKEMASTER V1 | #600053-1

QUEBEC
 LAKEMASTER V1 | #600055-1

SOUTHEAST STATES
 LAKEMASTER V5 | #600023-8
 LAKEMASTER PLUS V3 | #600023-7
 SMARTSTRIKE V4 | #600039-4

WESTERN STATES
 LAKEMASTER V3 (DEC 2019) | #600011-4
 LAKEMASTER PLUS V2 (DEC 2019) | #600011-5
 SMARTSTRIKE V3 (FEB 2020) | #600040-3

WISCONSIN
 LAKEMASTER V7 | #600025-5
 LAKEMASTER PLUS V2 | #600025-6
 SMARTSTRIKE V3 | #600041-3

WOODS/RAINY
 LAKEMASTER V4 | #600027-2
 LAKEMASTER PLUS V1 | #600027-3
 SMARTSTRIKE V1 | #600042-1

Product regions and version numbers are current as of December 2019. Product versions and coverage are subject to change.

HUMMINBIRD

FISHSMART APP

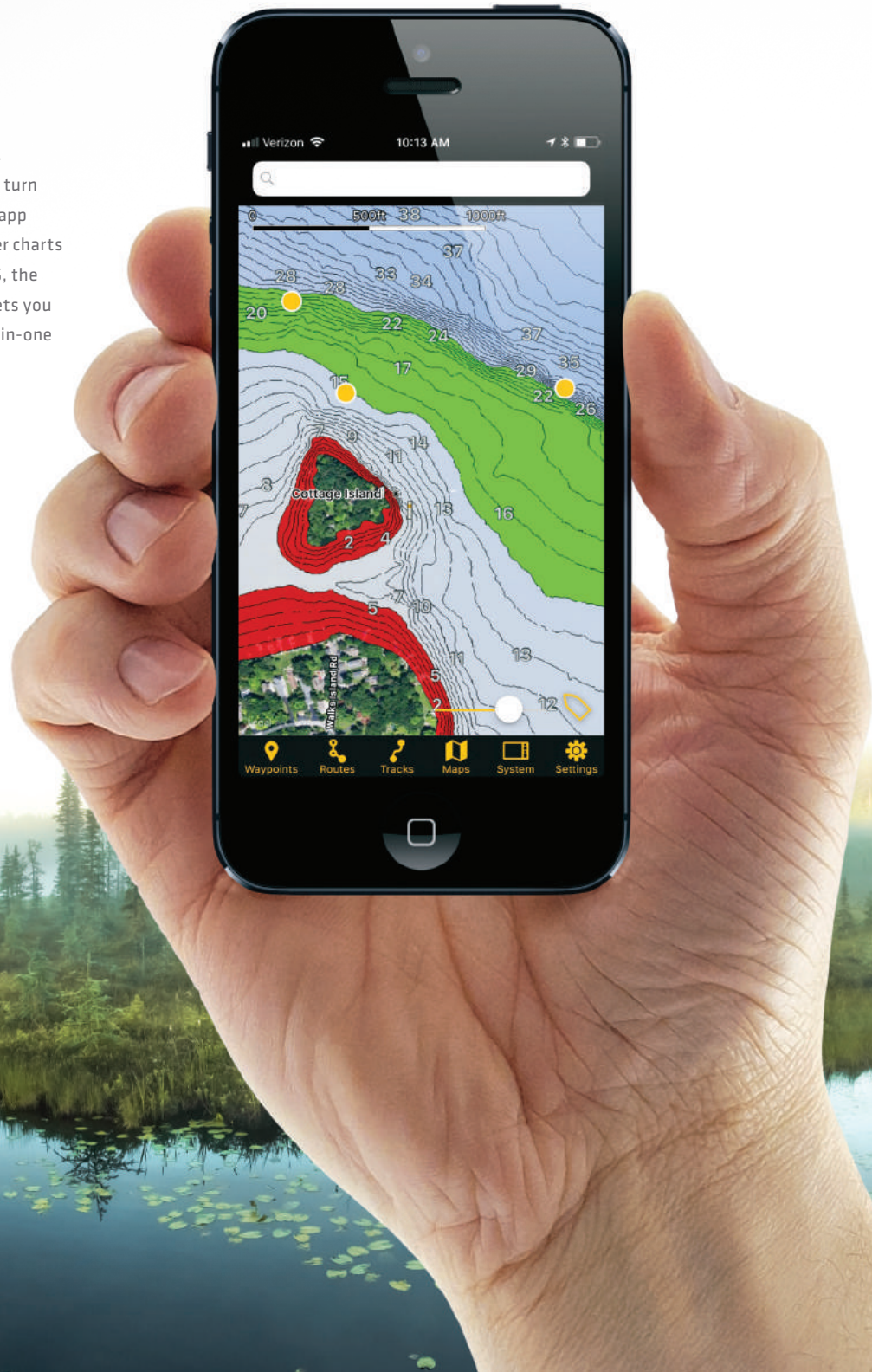
TAKE THE LAKE HOME WITH YOU.

When you're not fishing, you're thinking about fishing. And the Humminbird FishSmart app is the best way to turn those thoughts into action. This free iOS and Android app allows you to purchase, download and view LakeMaster charts through the ChartSelect store. Using your phone's GPS, the app displays your real-time location on the map, and lets you easily mark waypoints or routes. FishSmart is your all-in-one solution for on-the-go trip planning.

You can also download ChartSelect map purchases and software updates straight to your smartphone, then upload them to your Bluetooth-equipped SOLIX, HELIX G2N or HELIX G3N unit.



App Store is a service mark of Apple® Inc., registered in the U.S. and other countries. Google Play and the Google Play logo are trademarks of Google Inc.



BETTER TOGETHER

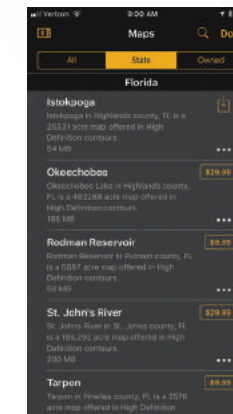
The FishSmart app connects wirelessly to your Bluetooth-enabled Humminbird unit for easy updates and map transfers.



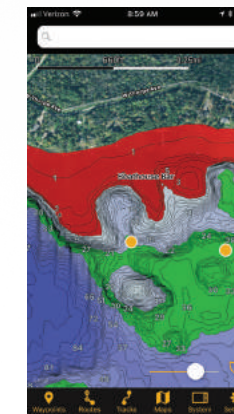
 **UPDATE SOFTWARE WIRELESSLY**
Use the smartphone app to update the system software on your fish finder.

 **UPLOAD LAKEMASTER CHARTS AND GPS DATA**
Transfer maps from the FishSmart app to your Humminbird unit.

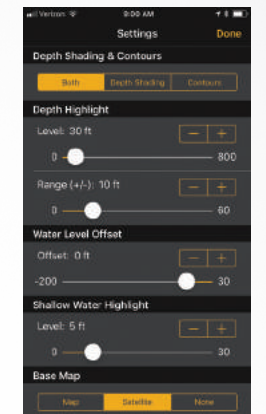
 **Bluetooth®**



Purchase detailed contour maps of more than 2,000 high-definition lakes in North America, and easily transfer them to your Bluetooth-equipped Humminbird.



Plan waypoints and routes to get a head start on your fishing trips. It also allows tracking on the water, so you can save your tracks for future trips.



Take control of your maps on the FishSmart app with all the patented features of Humminbird LakeMaster, including Depth Highlight, Water Level Offset and Shallow Water Highlight.

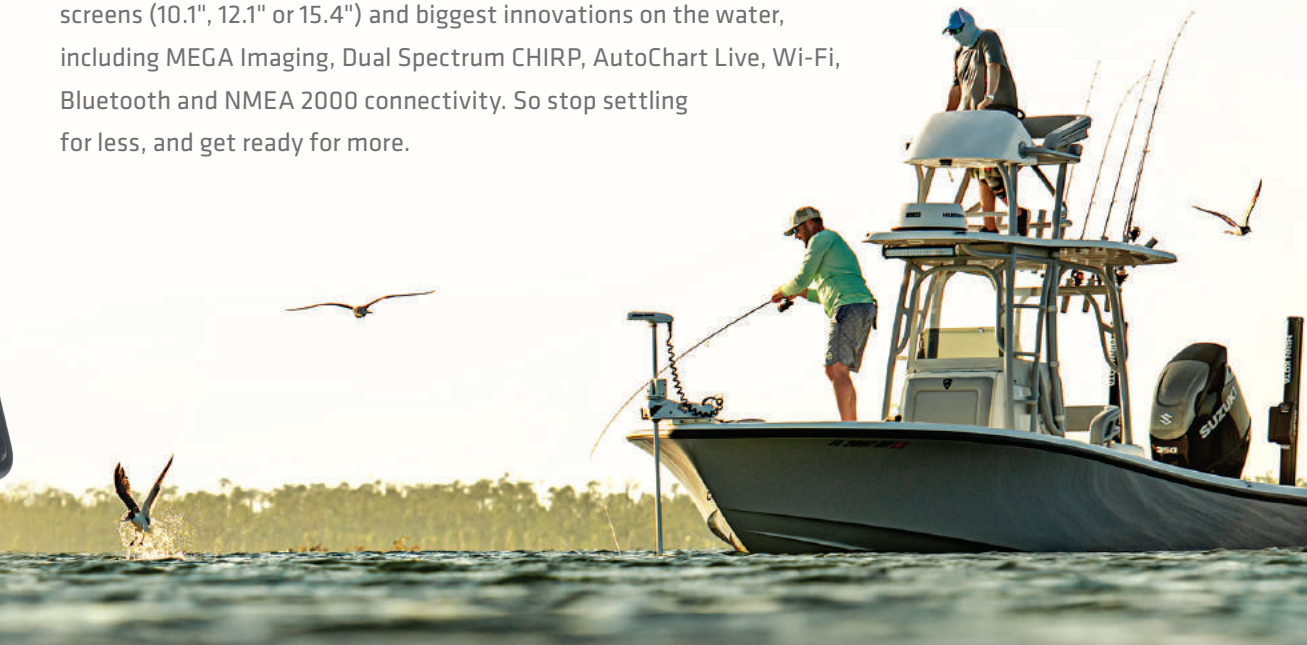




SOLIX SERIES

MORE IS MORE.

Some anglers expect more—from themselves, from their tackle, from their technology. If that's you, look no further. The SOLIX Series gives you everything you need to dominate the water, with an intuitive interface and all the customization and viewing options you'll need to make it your own. Not to mention some of the biggest screens (10.1", 12.1" or 15.4") and biggest innovations on the water, including MEGA Imaging, Dual Spectrum CHIRP, AutoChart Live, Wi-Fi, Bluetooth and NMEA 2000 connectivity. So stop settling for less, and get ready for more.



MAKE SOLIX YOUR OWN

Instantly take command of exclusive technologies like MEGA Imaging+, Dual Spectrum CHIRP and AutoChart Live, and customize up to four independent viewing panes to your needs and situation. A sidebar with widgets provides quick access to your most frequently used views, data and accessories like Minn Kota Talon and i-Pilot Link. You can even personalize your home screen wallpaper.



CROSS TOUCH

Take command of the display like never before with Cross Touch, exclusive to the SOLIX Series. Everything you can do with the touchscreen, you can also do with the keypad—so rough conditions will never compromise your control.



SALTWATER-INSPIRED DESIGN

Saltwater is no match for SOLIX. Waterproof IPX7 connections safeguard your SOLIX from corrosive saltwater, while built-in NMEA 2000 and Ethernet networking allow seamless connection of sensors, radar, AIS, AutoPilot and more.





SOLIX SERIES

G2 NETWORKING



SOLIX Series G2 is part of the One-Boat Network (See page 4).

SOLIX SERIES G2 | CHIRP · MEGA SI · MEGA DI · GPS



SOLIX 15 CHIRP MEGA SI+ GPS G2
 HD 15.4" DISPLAY / 1280H X 800V
 #411050-1
 #411050-1CHO

SOLIX 12 CHIRP MEGA SI+ GPS G2
 HD 12.1" DISPLAY / 1280H X 800V
 #411030-1
 #411030-1CHO

SOLIX 10 CHIRP MEGA SI+ GPS G2
 HD 10.1" DISPLAY / 1280H X 800V
 #411010-1
 #411010-1CHO

SOLIX SERIES G2 | CHIRP · MEGA DI · GPS

CONTROL HEAD ONLY—FIND THE RIGHT TRANSDUCER FOR YOU ON PG. 46-47



SOLIX 15 CHIRP MEGA DI+ GPS CHO G2
 HD 15.4" DISPLAY / 1280H X 800V #411110-1CHO

SOLIX 12 CHIRP MEGA DI+ GPS CHO G2
 HD 12.1" DISPLAY / 1280H X 800V #411100-1CHO

SOLIX 10 CHIRP MEGA DI+ GPS CHO G2
 HD 10.1" DISPLAY / 1280H X 800V #411090-1CHO



CROSS TOUCH USER INTERFACE

Take command of your display like never before with Cross Touch, exclusive to the SOLIX Series. Everything you can do with the touchscreen, you can also do with the keypad—so rough conditions will never compromise your control.

- CROSS TOUCH INTERFACE
- MEGA SIDE IMAGING+
- MEGA DOWN IMAGING+
- DUAL SPECTRUM CHIRP
- PRECISION GPS
- HUMMINBIRD BASEMAP
- AUTOCHART LIVE
- ETHERNET NETWORKING
- WI-FI
- NMEA 2000



ADD ONS

- MEGA 360 IMAGING™
- i-PILOT™ LINK
- CHIRP RADAR

Humminbird LakeMaster | Humminbird LakeMaster PLUS | Humminbird CoastMaster
 Humminbird SmartStrike | Humminbird AutoChart Live Zero Line
 Navionics | Navionics+ | Navionics HotMaps Platinum | Navionics Platinum+
 SM3000 Blackbox CHIRP | Minn Kota Talon | Bluetooth Remote | AIS
 AutoPilot | GPS Heading Sensor | 5-Port Ethernet Switch



Optional Bluetooth Remote (RC2)
 #410180-1
 (See page 48)

CHO MODELS (CONTROL HEAD ONLY)

Share a transducer from another SOLIX fish finder via an Ethernet network, or pair your CHO unit with a Minn Kota trolling motor featuring built-in MEGA DI or MEGA SI. Find the right transducer for you on pages 46-47.

BUILT-IN TECHNOLOGIES VARY BY MODEL - SEE PAGES 26-27

Products shown with optional LakeMaster charts. Features and specs are subject to change without notice.

SOLIX SERIES

15 / 12 / 10



SOLIX 15 CHIRP-MEGA SI+ GPS



SOLIX 15 CHIRP-MEGA DI+ GPS CONTROL HEAD ONLY



SOLIX 12 CHIRP-MEGA SI+ GPS



SOLIX 12 CHIRP-MEGA DI+ GPS CONTROL HEAD ONLY



SOLIX 10 CHIRP-MEGA SI+ GPS



SOLIX 10 CHIRP-MEGA DI+ GPS CONTROL HEAD ONLY

Model Options	SOLIX 15 CHIRP-MEGA SI+ GPS G2 CHO (Control Head Only)	—	SOLIX 12 CHIRP-MEGA SI+ GPS G2 CHO (Control Head Only)	—	SOLIX 10 CHIRP-MEGA SI+ GPS G2 CHO (Control Head Only)	—
Interface	Multi-Gesture Touchscreen + Keypad Control	Multi-Gesture Touchscreen + Keypad Control	Multi-Gesture Touchscreen + Keypad Control	Multi-Gesture Touchscreen + Keypad Control	Multi-Gesture Touchscreen + Keypad Control	Multi-Gesture Touchscreen + Keypad Control
Display Size & Pixel Matrix	15.4" Diagonal 1280H x 800V	15.4" Diagonal 1280H x 800V	12.1" Diagonal 1280H x 800V	12.1" Diagonal 1280H x 800V	10.1" Diagonal 1280H x 800V	10.1" Diagonal 1280H x 800V
Bluetooth	Built-In	Built-In	Built-In	Built-In	Built-In	Built-In
Wi-Fi	Built-In	Built-In	Built-In	Built-In	Built-In	Built-In
Water Surface Temp	Built-In Transducer	—	Built-In Transducer	—	Built-In Transducer	—
Speed	GPS Speed Included	GPS Speed Included	GPS Speed Included	GPS Speed Included	GPS Speed Included	GPS Speed Included
Backlight	LED	LED	LED	LED	LED	LED
Waterproof Class	IPX7	IPX7	IPX7	IPX7	IPX7	IPX7
Mounting Options	Gimbal or Optional In-Dash Mounting Kit	Gimbal or Optional In-Dash Mounting Kit	Gimbal or Optional In-Dash Mounting Kit	Gimbal or Optional In-Dash Mounting Kit	Gimbal or Optional In-Dash Mounting Kit	Gimbal or Optional In-Dash Mounting Kit
Transducer Included	XM 14 HW MSI T (Transom Mount)	—	XM 14 HW MSI T (Transom Mount)	—	XM 14 HW MSI T (Transom Mount)	—
Power Input	10.8-20 VDC	10.8-20 VDC	10.8-20 VDC	10.8-20 VDC	10.8-20 VDC	10.8-20 VDC
Power Draw	4.56 Amps	4.56 Amps	2.88 Amps	2.88 Amps	2.4 Amps	2.4 Amps

SONAR CAPABILITIES

Sonar - Standard	MEGA Side Imaging+ MEGA Down Imaging+ Dual Spectrum CHIRP	MEGA Down Imaging+ Dual Spectrum CHIRP	MEGA Side Imaging+ MEGA Down Imaging+ Dual Spectrum CHIRP	MEGA Down Imaging+ Dual Spectrum CHIRP	MEGA Side Imaging+ MEGA Down Imaging+ Dual Spectrum CHIRP	MEGA Down Imaging+ Dual Spectrum CHIRP
Sonar - Coverage	20°, 42°, 60°, (2) 86° & (2) 55° @ -10dB (Total of 180°)	20°, 42° & 60° @ -10dB	20°, 42°, 60°, (2) 86° & (2) 55° @ -10dB (Total of 180°)	20°, 42° & 60° @ -10dB	20°, 42°, 60°, (2) 86° & (2) 55° @ -10dB (Total of 180°)	20°, 42° & 60° @ -10dB
Sonar - Frequencies Supported	50/83/200/455/800 kHz & 1.2 MHz	50/83/200/455/800 kHz & 1.2 MHz	50/83/200/455/800 kHz & 1.2 MHz	50/83/200/455/800 kHz & 1.2 MHz	50/83/200/455/800 kHz & 1.2 MHz	50/83/200/455/800 kHz & 1.2 MHz
CHIRP - Frequencies Supported	Full Mode (150-200 kHz) Narrow Mode (140-200 kHz) Wide Mode (180-240 kHz) Optional Deepwater (28-250 kHz)*	Full Mode (150-200 kHz) Narrow Mode (140-200 kHz) Wide Mode (180-240 kHz) Optional Deepwater (28-250 kHz)*	Full Mode (150-200 kHz) Narrow Mode (140-200 kHz) Wide Mode (180-240 kHz) Optional Deepwater (28-250 kHz)*	Full Mode (150-200 kHz) Narrow Mode (140-200 kHz) Wide Mode (180-240 kHz) Optional Deepwater (28-250 kHz)*	Full Mode (150-200 kHz) Narrow Mode (140-200 kHz) Wide Mode (180-240 kHz) Optional Deepwater (28-250 kHz)*	Full Mode (150-200 kHz) Narrow Mode (140-200 kHz) Wide Mode (180-240 kHz) Optional Deepwater (28-250 kHz)*
CHIRP Imaging - Frequencies Supported	455 kHz SI (405-505 kHz) 455 kHz DI (435-535 kHz) 800 kHz SI (780-840 kHz) 800 kHz DI (800-860 kHz) MEGA SI+ (1050-1175 kHz) MEGA DI+ (1100-1200 kHz)	455 kHz DI (435-535 kHz) 800 kHz DI (800-860 kHz) MEGA DI+ (1100-1200 kHz)	455 kHz SI (405-505 kHz) 455 kHz DI (435-535 kHz) 800 kHz SI (780-840 kHz) 800 kHz DI (800-860 kHz) MEGA SI+ (1050-1175 kHz) MEGA DI+ (1100-1200 kHz)	455 kHz DI (435-535 kHz) 800 kHz DI (800-860 kHz) MEGA DI+ (1100-1200 kHz)	455 kHz SI (405-505 kHz) 455 kHz DI (435-535 kHz) 800 kHz SI (780-840 kHz) 800 kHz DI (800-860 kHz) MEGA SI+ (1050-1175 kHz) MEGA DI+ (1100-1200 kHz)	455 kHz DI (435-535 kHz) 800 kHz DI (800-860 kHz) MEGA DI+ (1100-1200 kHz)
Target Separation	2.5" (63.5 mm)	2.5" (63.5 mm)	2.5" (63.5 mm)	2.5" (63.5 mm)	2.5" (63.5 mm)	2.5" (63.5 mm)
Power Output (Max)	1000 Watts (RMS)*; 8000 Watts (Peak-to-Peak)*	1000 Watts (RMS)*; 8000 Watts (Peak-to-Peak)*	1000 Watts (RMS)*; 8000 Watts (Peak-to-Peak)*	1000 Watts (RMS)*; 8000 Watts (Peak-to-Peak)*	1000 Watts (RMS)*; 8000 Watts (Peak-to-Peak)*	1000 Watts (RMS)*; 8000 Watts (Peak-to-Peak)*
Depth - Sonar	1200 ft (Standard Transducer) 5000 ft (Optional Airmar CHIRP SM3000)	1200 ft (Standard Transducer) 5000 ft (Optional Airmar CHIRP SM3000)	1200 ft (Standard Transducer) 5000 ft (Optional Airmar CHIRP SM3000)	1200 ft (Standard Transducer) 5000 ft (Optional Airmar CHIRP SM3000)	1200 ft (Standard Transducer) 5000 ft (Optional Airmar CHIRP SM3000)	1200 ft (Standard Transducer) 5000 ft (Optional Airmar CHIRP SM3000)
Range - Side Imaging (Side-To-Side)	800 ft (244 m) - 455 kHz 250 ft (76 m) - 800 kHz 400 ft (122 m) - MEGA+	—	800 ft (244 m) - 455 kHz 250 ft (76 m) - 800 kHz 400 ft (122 m) - MEGA+	—	800 ft (244 m) - 455 kHz 250 ft (76 m) - 800 kHz 400 ft (122 m) - MEGA+	—
Depth - Down Imaging	400 ft (122 m) - 455 kHz 125 ft (38 m) - 800 kHz 200 ft (61 m) - MEGA+	400 ft (122 m) - 455 kHz 125 ft (38 m) - 800 kHz 200 ft (61 m) - MEGA+	400 ft (122 m) - 455 kHz 125 ft (38 m) - 800 kHz 200 ft (61 m) - MEGA+	400 ft (122 m) - 455 kHz 125 ft (38 m) - 800 kHz 200 ft (61 m) - MEGA+	400 ft (122 m) - 455 kHz 125 ft (38 m) - 800 kHz 200 ft (61 m) - MEGA+	400 ft (122 m) - 455 kHz 125 ft (38 m) - 800 kHz 200 ft (61 m) - MEGA+

MAPPING AND GPS FEATURES (For available map cards see page 25)

GPS Receiver	Internal	Internal	Internal	Internal	Internal	Internal
Waypoints, Routes, Tracks/Points	10,000, 50, 50/20,000	10,000, 50, 50/20,000	10,000, 50, 50/20,000	10,000, 50, 50/20,000	10,000, 50, 50/20,000	10,000, 50, 50/20,000
Humminbird Basemap Built-In	●	●	●	●	●	●
Humminbird AutoChart Live	●	●	●	●	●	●

NETWORK CAPABLE OPTIONS

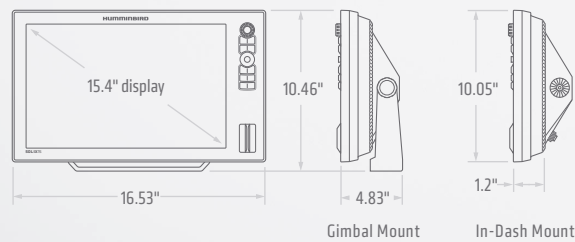
MEGA 360 Imaging	○	○	○	○	○	○
CHIRP Radar	○	○	○	○	○	○
NMEA 2000	●	●	●	●	●	●
5-Port Ethernet Switch	○	○	○	○	○	○
Minn Kota i-Pilot Link	○	○	○	○	○	○
Minn Kota Talon with Bluetooth	○	○	○	○	○	○

OPTIONAL ADD-ONS

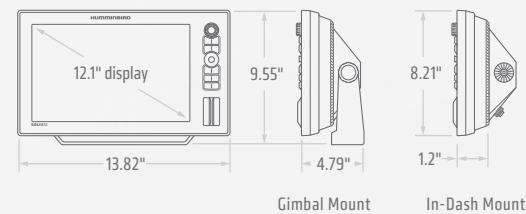
Bluetooth Remote	○	○	○	○	○	○
External GPS Receiver	○	○	○	○	○	○
AIS Compatibility	○	○	○	○	○	○
AutoPilot	○	○	○	○	○	○
GPS with Heading Sensor	○	○	○	○	○	○

● Included ○ Optional — Not supported *Optional deepwater transducer required Features and specifications subject to change without notice.

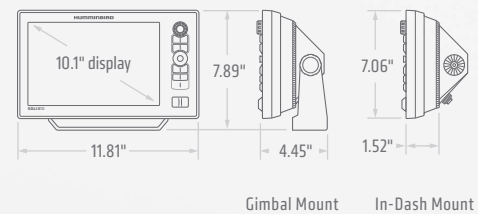
SOLIX 15



SOLIX 12



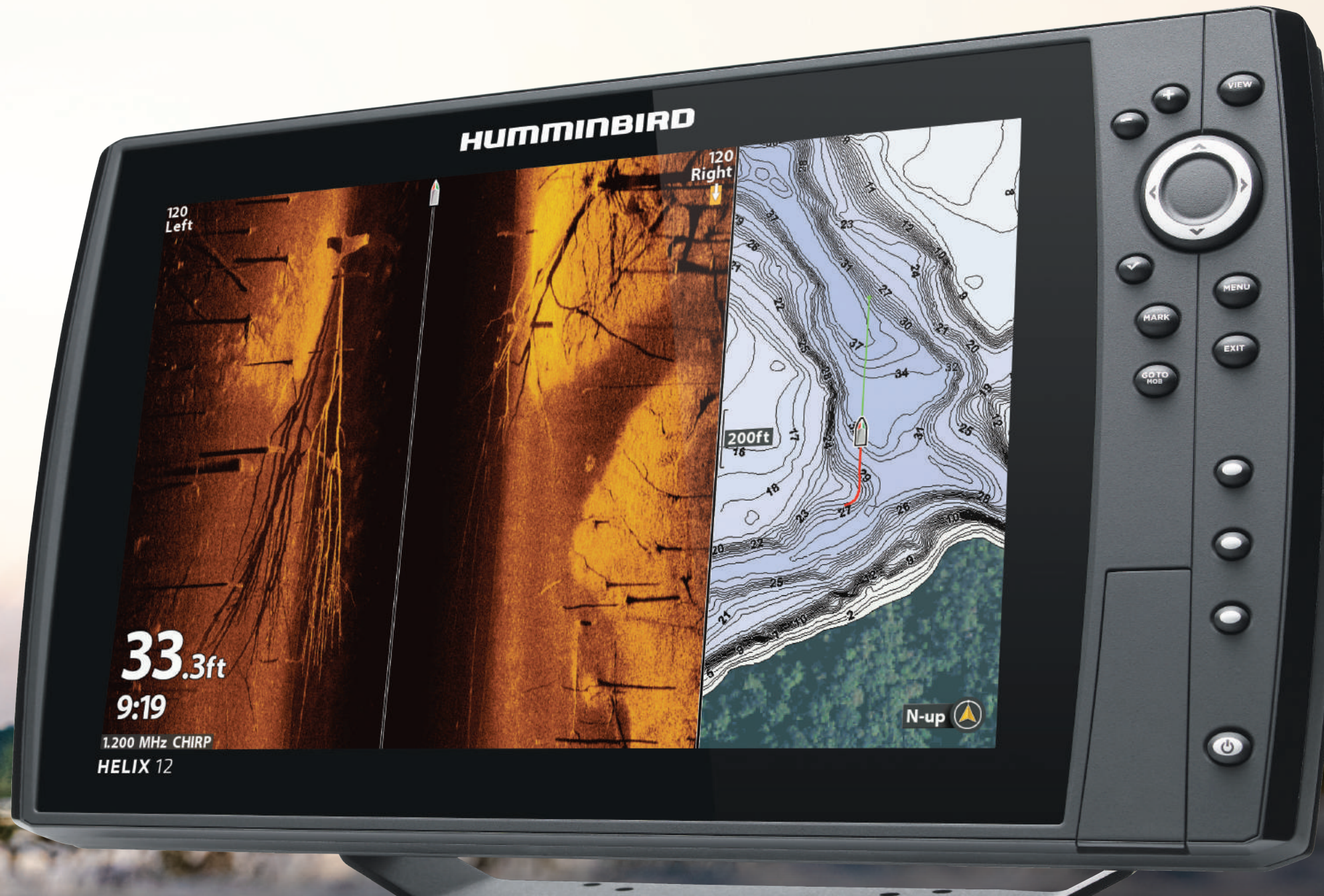
SOLIX 10



HELIX SERIES

FISHING RUNS IN THE FAMILY.

Every moment on the water matters. Don't waste a second messing around with your fish finder. The HELIX Series puts you on fish faster with an easy-to-use interface. You'll have innovative technologies at your command with options including MEGA Imaging+, Dual Spectrum CHIRP, AutoChart Live, Wi-Fi and Bluetooth connectivity. Choose from a full array of screen sizes plus standalone models or One-Boat Network compatible units (go to pages 4-5 for more details). All are ready to fish right out of the box, because at Humminbird, simplicity is in our DNA.



UNLOCK MORE CONTROL

Bluetooth capability allows you to do more using your HELIX or SOLIX, like controlling your Minn Kota Talon, transferring maps and software updates from the FishSmart app, or displaying your phone notifications. You can also take charge of your most used features with an optional Bluetooth remote (RC2).



HUMMINBIRD MAPPING AND i-PILOT LINK FOLLOW

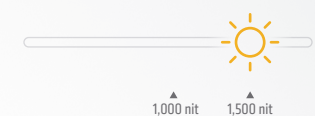
Navigate with the detail and exclusive features of Humminbird LakeMaster, identify hotspots with SmartStrike compatibility and map the lake's depth contours, bottom hardness or vegetation with AutoChart Live.* Use optional Minn Kota i-Pilot Link to automatically follow map depth contours through your compatible Minn Kota trolling motor.

*Available on all GPS-equipped models.



ULTRA-BRIGHT LCD DISPLAYS

Shed more light on what's below with the impressive, best-in-class brightness of the HELIX Series, delivering maximum clarity even in direct sunlight.





HELIX SERIES

G3N NETWORKING



HELIX Series G3N is part of the One-Boat Network (See page 4).

HELIX SERIES G3N | CHIRP · MEGA SI · MEGA DI · GPS



HELIX 12 CHIRP MEGA SI+ GPS G3N
 HD 12.1" DISPLAY / 1280H X 800V
 #410920-1
 #410920-1CHO



HELIX 10 CHIRP MEGA SI+ GPS G3N
 HD 10.1" DISPLAY / 1024H X 600V
 #410890-1
 #410890-1CHO

HELIX 9 CHIRP MEGA SI+ GPS G3N
 HD 9" DISPLAY / 1024H X 600V
 #410860-1
 #410860-1CHO

HELIX 8 CHIRP MEGA SI+ GPS G3N
 HD 8" DISPLAY / 1024H AX 600V
 #410830-1
 #410830-1CHO

HELIX 7 CHIRP MEGA SI GPS G3N
 HD 7" DISPLAY / 800H X 480V #411080-1

HELIX SERIES G3N | CHIRP · MEGA DI · GPS



HELIX 12 CHIRP MEGA DI+ GPS G3N
 HD 12.1" DISPLAY / 1280H X 800V
 #410910-1
 #410910-1CHO



HELIX 10 CHIRP MEGA DI+ GPS G3N
 HD 10.1" DISPLAY / 1024H X 600V
 #410880-1
 #410880-1CHO

HELIX 9 CHIRP MEGA DI+ GPS G3N
 HD 9" DISPLAY / 1024H X 600V
 #410850-1
 #410850-1CHO

HELIX 8 CHIRP MEGA DI GPS G3N
 HD 8" DISPLAY / 1024H X 600V
 #410820-1
 #410820-1CHO

HELIX 7 CHIRP MEGA DI GPS G3N
 HD 7" DISPLAY / 800H X 480V
 #411070-1
 #411070-1CHO

HELIX SERIES G3N | CHIRP · GPS



HELIX 12 CHIRP GPS G3N
 HD 12.1" DISPLAY / 1280H X 800V
 #410900-1



HELIX 10 CHIRP GPS G3N
 HD 10.1" DISPLAY / 1024H X 600V
 #410870-1

HELIX 9 CHIRP GPS G3N
 HD 9" DISPLAY / 1024H X 600V
 #410840-1

HELIX 8 CHIRP GPS G3N
 HD DISPLAY / 1024H X 600V
 #410810-1

HELIX 7 CHIRP GPS G3N
 HD DISPLAY / 800H X 480V
 #411060-1

- MEGA SIDE IMAGING+
- MEGA DOWN IMAGING+
- DUAL SPECTRUM CHIRP
- PRECISION GPS
- HUMMINBIRD BASEMAP
- AUTOCHART LIVE
- ETHERNET NETWORKING



ADD ONS

- MEGA 360 IMAGING+
- i-PILOT LINK
- CHIRP RADAR

- Humminbird LakeMaster | Humminbird LakeMaster PLUS | Humminbird CoastMaster
- Humminbird SmartStrike | Humminbird AutoChart Live Zero Line
- Navionics | Navionics+ | Navionics HotMaps Platinum | Navionics Platinum+
- SM3000 Blackbox CHIRP | Minn Kota Talon | Bluetooth Remote | AIS
- NMEA 2000 | AutoPilot | GPS Heading Sensor | 5-Port Ethernet Switch



Optional Bluetooth Remote (RC2)
 #410180-1
 (See page 48)

CHO MODELS (CONTROL HEAD ONLY)
 Share a transducer from another HELIX fish finder via an Ethernet network, or pair your CHO unit with a Minn Kota trolling motor featuring built-in MEGA DI or MEGA SI. Find the right transducer for you on pages 46-47.

BUILT-IN TECHNOLOGIES VARY BY MODEL - SEE PAGES 34-36

Products shown with optional LakeMaster charts. Features and specs are subject to change without notice.



HELIX SERIES

G2 + G3 NON-NETWORKING

HELIX SERIES G3



- HELIX 7 CHIRP MEGA SI GPS G3**
HD DISPLAY / 800H X 480V #410950-1
- HELIX 7 CHIRP MEGA DI GPS G3**
HD DISPLAY / 800H X 480V #410940-1
- HELIX 7 CHIRP GPS G3**
HD DISPLAY / 800H X 480V #410930-1

HELIX SERIES G2



- HELIX 5 CHIRP SI GPS G2**
HD 5" DISPLAY / 800H X 480V #410230-1
- HELIX 5 DI G2**
HD 5" DISPLAY / 800H X 480V #410200-1
- HELIX 5 CHIRP DI GPS G2**
HD 5" DISPLAY / 800H X 480V #410220-1
- HELIX 5 SONAR G2**
HD 5" DISPLAY / 800H X 480V #410190-1
- HELIX 5 CHIRP GPS G2**
HD 5" DISPLAY / 800H X 480V #410210 #410260-1 (PT MODEL)

Portable (PT) models include a soft-sided carrying case with a suction cup transducer, 7Ah battery and charger.



PIRANHAMAX

NON-NETWORKING



- PIRANHAMAX 4 DI**
HD 5" DISPLAY / 272H X 480V #410160-1
- PIRANHAMAX 4**
HD 4.3" DISPLAY / 272H X 480V #410150-1 #410170-1 (PT MODEL)

Portable (PT) model includes a soft-sided carrying case with a suction cup transducer, 7Ah battery and charger.



- MEGA SIDE IMAGING
- MEGA DOWN IMAGING
- DUAL SPECTRUM CHIRP
- SIDE IMAGING
- DOWN IMAGING
- DUALBEAM PLUS
- PRECISION GPS
- HUMMINBIRD BASEMAP
- AUTOCHART LIVE

BUILT-IN TECHNOLOGIES VARY BY MODEL - SEE PAGES 36-37

Products shown with optional LakeMaster charts. Features and specs are subject to change without notice.

HELIX SERIES

12 / 10 / 9 / 8



Model Options	HELIX 12 CHIRP-MEGA SI+-GPS G3N CHO (Control Head Only)	HELIX 12 CHIRP-MEGA DI+-GPS G3N CHO (Control Head Only)	—	HELIX 10 CHIRP-MEGA SI+-GPS G3N CHO (Control Head Only)	HELIX 10 CHIRP-MEGA DI+-GPS G3N CHO (Control Head Only)	—	HELIX 9 CHIRP-MEGA SI+-GPS G3N CHO (Control Head Only)	HELIX 9 CHIRP-MEGA DI+-GPS G3N CHO (Control Head Only)	—	HELIX 8 CHIRP-MEGA SI+-GPS G3N CHO (Control Head Only)	HELIX 8 CHIRP-MEGA DI-GPS G3N CHO (Control Head Only)	—	HELIX 8 CHIRP-GPS G3N CHO (Control Head Only)
Interface	Keypad Control (X-Press Menu™ System)	Keypad Control (X-Press Menu System)	Keypad Control (X-Press Menu System)	Keypad Control (X-Press Menu System)	Keypad Control (X-Press Menu System)	Keypad Control (X-Press Menu System)	Keypad Control (X-Press Menu System)	Keypad Control (X-Press Menu System)	Keypad Control (X-Press Menu System)	Keypad Control (X-Press Menu System)	Keypad Control (X-Press Menu System)	Keypad Control (X-Press Menu System)	Keypad Control (X-Press Menu System)
Display Size & Pixel Matrix	12.1" Diagonal 1280H x 800V	12.1" Diagonal 1280H x 800V	12.1" Diagonal 1280H x 800V	10.1" Diagonal 1024H x 600V	10.1" Diagonal 1024H x 600V	10.1" Diagonal 1024H x 600V	9" Diagonal 1024H x 600V	9" Diagonal 1024H x 600V	9" Diagonal 1024H x 600V	8" Diagonal 1024H x 600V	8" Diagonal 1024H x 600V	8" Diagonal 1024H x 600V	8" Diagonal 1024H x 600V
Bluetooth	Built-In	Built-In	Built-In	Built-In	Built-In	Built-In	Built-In	Built-In	Built-In	Built-In	Built-In	Built-In	Built-In
Wi-Fi	—	—	—	—	—	—	—	—	—	—	—	—	—
Water Surface Temp	Built-In Transducer	Built-In Transducer	Built-In Transducer	Built-In Transducer	Built-In Transducer	Built-In Transducer	Built-In Transducer	Built-In Transducer	Built-In Transducer	Built-In Transducer	Built-In Transducer	Built-In Transducer	Built-In Transducer
Speed	GPS Speed Included	GPS Speed Included	GPS Speed Included	GPS Speed Included	GPS Speed Included	GPS Speed Included	GPS Speed Included	GPS Speed Included	GPS Speed Included	GPS Speed Included	GPS Speed Included	GPS Speed Included	GPS Speed Included
Backlight	LED	LED	LED	LED	LED	LED	LED	LED	LED	LED	LED	LED	LED
Waterproof Class	IPX7	IPX7	IPX7	IPX7	IPX7	IPX7	IPX7	IPX7	IPX7	IPX7	IPX7	IPX7	IPX7
Mounting Options	Gimbal or Optional In-Dash Mounting Kit	Gimbal or Optional In-Dash Mounting Kit	Gimbal or Optional In-Dash Mounting Kit	Gimbal or Optional In-Dash Mounting Kit	Gimbal or Optional In-Dash Mounting Kit	Gimbal or Optional In-Dash Mounting Kit	Gimbal or Optional In-Dash Mounting Kit	Gimbal or Optional In-Dash Mounting Kit	Gimbal or Optional In-Dash Mounting Kit	Gimbal or Optional In-Dash Mounting Kit	Gimbal or Optional In-Dash Mounting Kit	Gimbal or Optional In-Dash Mounting Kit	Gimbal or Optional In-Dash Mounting Kit
Transducer included	XM 9 HW MSI T (Transom Mount)	XM 9 HW MDI T (Transom Mount)	XNT 9 HW T (Transom Mount)	XM 9 HW MSI T (Transom Mount)	XM 9 HW MDI T (Transom Mount)	XNT 9 HW T (Transom Mount)	XM 9 HW MSI T (Transom Mount)	XM 9 HW MDI T (Transom Mount)	XNT 9 HW T (Transom Mount)	XM 9 HW MSI T (Transom Mount)	XNT 9 HW MDI 75 T (Transom Mount)	XNT 9 HW T (Transom Mount)	XNT 9 HW T (Transom Mount)
Power Input	10.8-20 VDC	10.8-20 VDC	10.8-20 VDC	10.8-20 VDC	10.8-20 VDC	10.8-20 VDC	10.8-20 VDC	10.8-20 VDC	10.8-20 VDC	10.8-20 VDC	10.8-20 VDC	10.8-20 VDC	10.8-20 VDC
Power Draw	1.75 Amps	1.75 Amps	1.75 Amps	1.2 Amps	1.2 Amps	1.2 Amps	1 Amp	1 Amp	1 Amp	1 Amp	1 Amp	1 Amp	1 Amp

SONAR CAPABILITIES

Sonar - Standard	MEGA Side Imaging+ MEGA Down Imaging+ Dual Spectrum CHIRP	MEGA Down Imaging+ Dual Spectrum CHIRP	Dual Spectrum CHIRP	MEGA Side Imaging+ MEGA Down Imaging+ Dual Spectrum CHIRP	MEGA Down Imaging+ Dual Spectrum CHIRP	Dual Spectrum CHIRP	MEGA Side Imaging+ MEGA Down Imaging+ Dual Spectrum CHIRP	MEGA Down Imaging+ Dual Spectrum CHIRP	Dual Spectrum CHIRP	MEGA Side Imaging+ MEGA Down Imaging+ Dual Spectrum CHIRP	MEGA Down Imaging+ Dual Spectrum CHIRP	Dual Spectrum CHIRP	MEGA Side Imaging+ MEGA Down Imaging+ Dual Spectrum CHIRP
Sonar - Coverage	20°, 42°, 60°, (2) 86° & (2) 55° @ -10dB (Total of 180°)	25°, 42°, 45°, 75° @ -10dB	20°, 42° & 60° @ -10dB	20°, 42°, 60°, (2) 86° & (2) 55° @ -10dB (Total of 180°)	25°, 42°, 45°, 75° @ -10dB	20°, 42° & 60° @ -10dB	20°, 42°, 60°, (2) 55° & (2) 86° @ -10dB (Total of 180°)	25°, 42°, 45°, 75° @ -10dB	20°, 42° & 60° @ -10dB	20°, 42°, 60°, (2) 55° & (2) 86° @ -10dB (Total of 180°)	25°, 42°, 45°, 75° @ -10dB	20°, 42° & 60° @ -10dB	20°, 42°, 60°, (2) 55° & (2) 86° @ -10dB (Total of 180°)
Sonar - Frequencies Supported	50/83/200/455/800 kHz & 1.2 MHz	50/83/200/455/800 kHz & 1.2 MHz	50/80/200 kHz	50/83/200/455/800 kHz & 1.2 MHz	50/83/200/455/800 kHz & 1.2 MHz	50/80/200 kHz	50/83/200/455/800 kHz & 1.2 MHz	50/83/200/455/800 kHz & 1.2 MHz	50/80/200 kHz	50/83/200/455/800 kHz & 1.2 MHz	50/83/200/455/800 kHz & 1.2 MHz	50/80/200 kHz	
CHIRP - Frequencies Supported	Full Mode (150-220 kHz) Narrow Mode (180-240 kHz) Wide Mode (140-200 kHz)	Full Mode (150-220 kHz) Narrow Mode (180-240 kHz) Wide Mode (140-200 kHz)	Full Mode (150-220 kHz) Narrow Mode (180-240 kHz) Wide Mode (140-200 kHz)	Full Mode (150-220 kHz) Narrow Mode (180-240 kHz) Wide Mode (140-200 kHz)	Full Mode (150-220 kHz) Narrow Mode (180-240 kHz) Wide Mode (140-200 kHz)	Full Mode (150-220 kHz) Narrow Mode (180-240 kHz) Wide Mode (140-200 kHz)	Full Mode (150-220 kHz) Narrow Mode (180-240 kHz) Wide Mode (140-200 kHz)	Full Mode (150-220 kHz) Narrow Mode (180-240 kHz) Wide Mode (140-200 kHz)	Full Mode (150-220 kHz) Narrow Mode (180-240 kHz) Wide Mode (140-200 kHz)	Full Mode (150-220 kHz) Narrow Mode (180-240 kHz) Wide Mode (140-200 kHz)	Full Mode (150-220 kHz) Narrow Mode (180-240 kHz) Wide Mode (140-200 kHz)	Full Mode (150-220 kHz) Narrow Mode (180-240 kHz) Wide Mode (140-200 kHz)	
CHIRP Imaging - Frequencies Supported	455 kHz SI (405-505 kHz) 455 kHz DI (435-535 kHz) 800 kHz SI (780-840 kHz) 800 kHz DI (800-860 kHz) MEGA SI+ (1050-1175 kHz) MEGA DI+ (1100-1200 kHz)	455 kHz DI (435-535 kHz) 800 kHz DI (800-860 kHz) MEGA DI+ (1100-1200 kHz)	—	455 kHz SI (405-505 kHz) 455 kHz DI (435-535 kHz) 800 kHz SI (780-840 kHz) 800 kHz DI (800-860 kHz) MEGA SI+ (1050-1175 kHz) MEGA DI+ (1100-1200 kHz)	455 kHz DI (435-535 kHz) 800 kHz DI (800-860 kHz) MEGA DI+ (1100-1200 kHz)	—	—	455 kHz SI (405-505 kHz) 455 kHz DI (435-535 kHz) 800 kHz SI (780-840 kHz) 800 kHz DI (800-860 kHz) MEGA SI+ (1050-1175 kHz) MEGA DI+ (1100-1200 kHz)	455 kHz DI (435-535 kHz) 800 kHz DI (800-860 kHz) MEGA DI+ (1100-1200 kHz)	—	455 kHz SI (405-505 kHz) 455 kHz DI (435-535 kHz) 800 kHz SI (780-840 kHz) 800 kHz DI (800-860 kHz) MEGA SI+ (1050-1175 kHz) MEGA DI+ (1100-1200 kHz)	455 kHz (440-500 kHz) MEGA DI+ (1075-1150 kHz)	—
Target Separation	2.5" (63.5 mm)	2.5" (63.5 mm)	2.5" (63.5 mm)	2.5" (63.5 mm)	2.5" (63.5 mm)	2.5" (63.5 mm)	2.5" (63.5 mm)	2.5" (63.5 mm)	2.5" (63.5 mm)	2.5" (63.5 mm)	2.5" (63.5 mm)	2.5" (63.5 mm)	
Power Output (Max)	1000 Watts (RMS)*; 8000 Watts (Peak-to-Peak)*	1000 Watts (RMS)*; 8000 Watts (Peak-to-Peak)*	1000 Watts (RMS)*; 8000 Watts (Peak-to-Peak)*	1000 Watts (RMS)*; 8000 Watts (Peak-to-Peak)*	1000 Watts (RMS)*; 8000 Watts (Peak-to-Peak)*	1000 Watts (RMS)*; 8000 Watts (Peak-to-Peak)*	1000 Watts (RMS)*; 8000 Watts (Peak-to-Peak)*	1000 Watts (RMS)*; 8000 Watts (Peak-to-Peak)*	1000 Watts (RMS)*; 8000 Watts (Peak-to-Peak)*	1000 Watts (RMS)*; 8000 Watts (Peak-to-Peak)*	1000 Watts (RMS)*; 8000 Watts (Peak-to-Peak)*	1000 Watts (RMS)*; 8000 Watts (Peak-to-Peak)*	
Depth - Sonar	1200 ft (Standard Transducer) 3500 ft (Optional Transducer)	1200 ft (Standard Transducer) 3500 ft (Optional Transducer)	1200 ft (Standard Transducer) 3500 ft (Optional Transducer)	1200 ft (Standard Transducer) 3500 ft (Optional Transducer)	1200 ft (Standard Transducer) 3500 ft (Optional Transducer)	1200 ft (Standard Transducer) 3500 ft (Optional Transducer)	1200 ft (Standard Transducer) 3500 ft (Optional Transducer)	1200 ft (Standard Transducer) 3500 ft (Optional Transducer)	1200 ft (Standard Transducer) 3500 ft (Optional Transducer)	1200 ft (Standard Transducer) 3500 ft (Optional Transducer)	1200 ft (Standard Transducer) 3500 ft (Optional Transducer)	1200 ft (Standard Transducer) 3500 ft (Optional Transducer)	
Range - Side Imaging (Side-to-Side)	800 ft (244 m) - 455 kHz 250 ft (76 m) - 800 kHz 400 ft (122 m) - MEGA+	—	—	800 ft (244 m) - 455 kHz 250 ft (76 m) - 800 kHz 400 ft (122 m) - MEGA+	—	—	800 ft (244 m) - 455 kHz 250 ft (76 m) - 800 kHz 400 ft (122 m) - MEGA+	—	—	—	800 ft (244 m) - 455 kHz 250 ft (76 m) - 800 kHz 400 ft (122 m) - MEGA+	—	
Depth - Down Imaging	400 ft (122 m) - 455 kHz 125 ft (38 m) - 800 kHz 200 ft (61 m) - MEGA+	400 ft (122 m) - 455 kHz 125 ft (38 m) - 800 kHz 200 ft (61 m) - MEGA+	—	400 ft (122 m) - 455 kHz 125 ft (38 m) - 800 kHz 200 ft (61 m) - MEGA+	—	—	400 ft (122 m) - 455 kHz 125 ft (38 m) - 800 kHz 200 ft (61 m) - MEGA+	—	—	400 ft (122 m) - 455 kHz 125 ft (38 m) - 800 kHz 200 ft (61 m) - MEGA+	350 ft (107 m) - 455 kHz 125 ft (38 m) - MEGA	—	

MAPPING AND GPS FEATURES (For available map cards see page 19)

GPS Receiver	Internal	Internal	Internal	Internal	Internal	Internal	Internal	Internal	Internal	Internal	Internal	Internal
Waypoints, Routes, Tracks/Points	2,500, 47, 50/20,000	2,500, 47, 50/20,000	2,500, 47, 50/20,000	2,500, 47, 50/20,000	2,500, 47, 50/20,000	2,500, 47, 50/20,000	2,750, 45, 50/20,000	2,750, 45, 50/20,000	2,750, 45, 50/20,000	2,750, 45, 50/20,000	2,750, 45, 50/20,000	2,750, 45, 50/20,000
Humminbird Basemap Built-In	●	●	●	●	●	●	●	●	●	●	●	●
Humminbird AutoChart Live (In Open Water Mode)	●	●	●	●	●	●	●	●	●	●	●	●
Humminbird AutoChart Live Ice (In Ice Fishing Mode)	—	—	—	—	—	—	—	—	—	—	—	—

NETWORK CAPABLE OPTIONS

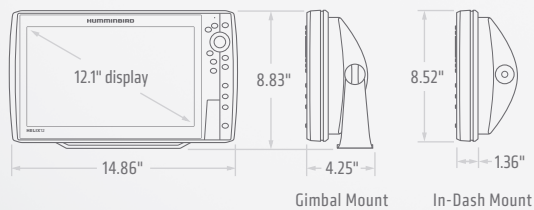
MEGA 360 Imaging	○	○	—	○	○	—	○	○	—	○	○	—
CHIRP Radar	○	○	○	○	○	○	○	○	○	○	○	○
NMEA 2000	○	○	○	○	○	○	○	○	○	○	○	○
5-Port Ethernet Switch	○	○	○	○	○	○	○	○	○	○	○	○
Minn Kota i-Pilot Link	○	○	○	○	○	○	○	○	○	○	○	○
Minn Kota Talon with Bluetooth	○	○	○	○	○	○	○	○	○	○	○	○

OPTIONAL ADD-ONS

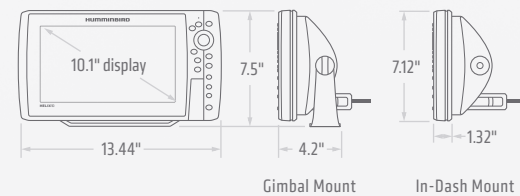
Bluetooth Remote	○	○	○	○	○	○	○	○	○	○	○	○
External GPS Receiver	○	○	○	○	○	○	○	○	○	○	○	○
AIS Compatibility	○	○	○	○	○	○	○	○	○	○	○	○
AutoPilot	○	○	○	○	○	○	○	○	○	○	○	○
GPS with Heading Sensor	○	○	○	○	○	○	○	○	○	○	○	○

● Included ○ Optional — Not supported *Optional deepwater transducer required Features and specifications subject to change without notice.

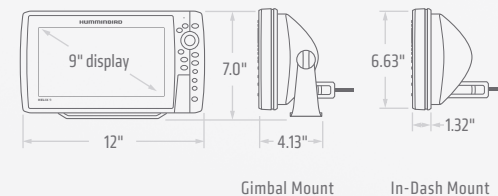
HELIX 12



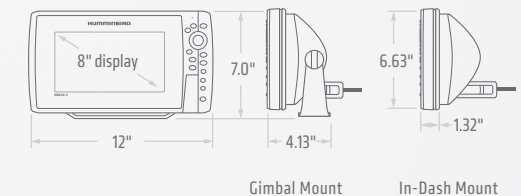
HELIX 10



HELIX 9



HELIX 8



HELIX SERIES

7 / 5



HELIX 7 CHIRP-MEGA SI-GPS
G3N NETWORKING



HELIX 7 CHIRP-MEGA DI-GPS
G3N NETWORKING



HELIX 7 CHIRP-GPS
G3N NETWORKING



HELIX 7 CHIRP-MEGA SI-GPS
G3



HELIX 7 CHIRP-MEGA DI-GPS
G3



HELIX 7 CHIRP-GPS
G3

Model Options	—	HELIX 7 CHIRP-MEGA DI-GPS G3N CHO (Control Head Only)	—	—	—
Interface	Keypad Control (X-Press Menu System)	Keypad Control (X-Press Menu System)	Keypad Control (X-Press Menu System)	Keypad Control (X-Press Menu System)	Keypad Control (X-Press Menu System)
Display Size & Pixel Matrix	7" Diagonal 800H x 480V	7" Diagonal 800H x 480V	7" Diagonal 800H x 480V	7" Diagonal 800H x 480V	7" Diagonal 800H x 480V
Bluetooth	Built-In	Built-In	Built-In	Built-In	Built-In
Wi-Fi	—	—	—	—	—
Water Surface Temp	Built-In Transducer	Built-In Transducer	Built-In Transducer	Built-In Transducer	Built-In Transducer
Speed	GPS Speed Included	GPS Speed Included	GPS Speed Included	GPS Speed Included	GPS Speed Included
Backlight	LED	LED	LED	LED	LED
Waterproof Class	IPX7	IPX7	IPX7	IPX7	IPX7
Mounting Options	Gimbal or Optional In-Dash Mounting Kit	Gimbal or Optional In-Dash Mounting Kit	Gimbal or Optional In-Dash Mounting Kit	Gimbal or Optional In-Dash Mounting Kit	Gimbal or Optional In-Dash Mounting Kit
Transducer - Standard	XNT 9 HW MSI 150 T (Transom Mount)	XNT 9 HW MDI 75 T (Transom Mount)	XNT 9 HW T (Transom Mount)	XNT 9 HW MSI 150 T (Transom Mount)	XNT 9 HW MDI 75 T (Transom Mount)
Power Input	10.8-20 VDC	10.8-20 VDC	10.8-20 VDC	10.8-20 VDC	10.8-20 VDC
Power Draw	800 mA	800 mA	800 mA	800 mA	800 mA

SONAR CAPABILITIES

Sonar - Standard	MEGA Side Imaging MEGA Down Imaging Dual Spectrum CHIRP	MEGA Down Imaging Dual Spectrum CHIRP	Dual Spectrum CHIRP	MEGA Side Imaging MEGA Down Imaging Dual Spectrum CHIRP	MEGA Down Imaging Dual Spectrum CHIRP	Dual Spectrum CHIRP
Sonar - Coverage	20°, 42°, 60° 6 (2) 86° @ -10dB (Total of 180°)	16°, 42°, 28°, 45° 6 75° @ -10dB	20°, 42° 6 60° @ -10dB	20°, 42°, 60° 6 (2) 86° @ -10dB (Total of 180°)	16°, 28°, 42°, 45° 6 75° @ -10dB	20°, 42° 6 60° @ -10dB
Sonar - Frequencies Supported	50/83/200/455 kHz	50/83/200/455 kHz	50/83/200 kHz	50/83/200/455 kHz	50/83/200/455 kHz	50/83/200 kHz
CHIRP - Frequencies Supported	Full Mode (150-220 kHz) Narrow Mode (180-240 kHz) Wide Mode (140-200 kHz)	Full Mode (150-220 kHz) Narrow Mode (180-240 kHz) Wide Mode (140-200 kHz)	Full Mode (150-220 kHz) Narrow Mode (180-240 kHz) Wide Mode (140-200 kHz)	Full Mode (150-220 kHz) Narrow Mode (180-240 kHz) Wide Mode (140-200 kHz)	Full Mode (150-220 kHz) Narrow Mode (180-240 kHz) Wide Mode (140-200 kHz)	Full Mode (150-220 kHz) Narrow Mode (180-240 kHz) Wide Mode (140-200 kHz)
CHIRP Imaging - Frequencies Supported	455 kHz (440-500 kHz) MEGA SI (1075-1150 kHz) MEGA DI (1075-1150 kHz)	455 kHz (440-500 kHz) MEGA DI (1075-1150 kHz)	—	455 kHz (440-500 kHz) MEGA SI (1075-1150 kHz) MEGA DI (1075-1150 kHz)	455 kHz (440-500 kHz) MEGA DI (1075-1150 kHz)	—
Target Separation	2.5" (63.5 mm)	2.5" (63.5 mm)	2.5" (63.5 mm)	2.5" (63.5 mm)	2.5" (63.5 mm)	2.5" (63.5 mm)
Power Output (Max)	500 Watts (RMS); 4000 Watts (Peak-to-Peak)	500 Watts (RMS); 4000 Watts (Peak-to-Peak)	500 Watts (RMS); 4000 Watts (Peak-to-Peak)	500 Watts (RMS); 4000 Watts (Peak-to-Peak)	500 Watts (RMS); 4000 Watts (Peak-to-Peak)	500 Watts (RMS); 4000 Watts (Peak-to-Peak)
Depth - Sonar	1200 ft (Standard Transducer) 3500 ft (Optional Transducer)	1200 ft (Standard Transducer) 3500 ft (Optional Transducer)	1200 ft (Standard Transducer) 3500 ft (Optional Transducer)	1200 ft (Standard Transducer) 3500 ft (Optional Transducer)	1200 ft (Standard Transducer) 3500 ft (Optional Transducer)	1200 ft (Standard Transducer) 3500 ft (Optional Transducer)
Range - Side Imaging (Side-To-Side)	480 ft (146 m) - 455 kHz 75 ft (23 m) - MEGA	—	—	480 ft (146 m) - 455 kHz 75 ft (23 m) - MEGA	—	—
Depth - Down Imaging	480 ft (146 m) - 455 kHz 75 ft (23 m) - MEGA	350 ft (107 m) - 455 kHz 125 ft (38 m) - MEGA	—	480 ft (146 m) - 455 kHz 75 ft (23 m) - MEGA	350 ft (107 m) - 455 kHz 125 ft (38 m) - MEGA	—

MAPPING AND GPS FEATURES (For available map cards see page 19)

GPS Receiver	Internal	Internal	Internal	Internal	Internal	Internal
Waypoints, Routes, Tracks/Points	2,750, 45, 50/20,000	2,750, 45, 50/20,000	2,750, 45, 50/20,000	2,750, 45, 50/20,000	2,750, 45, 50/20,000	2,750, 45, 50/20,000
Humminbird Basemap Built-In	●	●	●	●	●	●
Humminbird AutoChart Live (In Open Water Mode)	●	●	●	●	●	●
Humminbird AutoChart Live Ice (In Ice Fishing Mode)	●	●	●	●	●	●

NETWORK CAPABLE OPTIONS

MEGA 360 Imaging	—	—	—	—	—	—
CHIRP Radar	○	○	○	○	○	○
NMEA 2000	○	○	○	○	○	○
5-Port Ethernet Switch	○	○	○	○	○	○
Minn Kota i-Pilot Link	○	○	○	○	○	○
Minn Kota Talon with Bluetooth	○	○	○	○	○	○

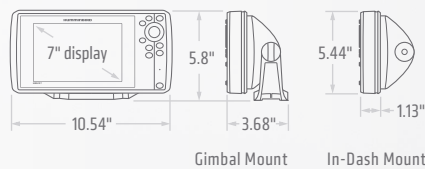
OPTIONAL ADD-ONS

Bluetooth Remote	○	○	○	○	○	○
External GPS Receiver	○	○	○	○	○	○
AIS Compatibility	○	○	○	○	○	○
AutoPilot	○	○	○	○	○	○
GPS with Heading Sensor	○	○	○	○	○	○

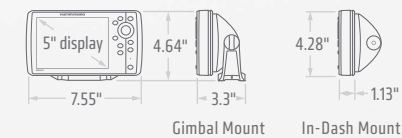
● Included ○ Optional — Not supported Features and specifications subject to change without notice.



HELIX 7



HELIX 5



PIRANHAMAX 4



PiranhaMAX 4 DI



PiranhaMAX 4 PT (Portable)

Model Options	—	HELIX 5 CHIRP-GPS PT G2 (Portable)	—	HELIX 5 Sonar PT G2 (Portable)
Interface	Keypad Control (X-Press Menu System)	Keypad Control (X-Press Menu System)	Keypad Control (X-Press Menu System)	Keypad Control (X-Press Menu System)
Display Size & Pixel Matrix	5" Diagonal 800H x 480V	5" Diagonal 800H x 480V	5" Diagonal 800H x 480V	5" Diagonal 800H x 480V
Bluetooth	—	—	—	—
Wi-Fi	—	—	—	—
Water Surface Temp	Built-In Transducer	Built-In Transducer	Built-In Transducer	Built-In Transducer
Speed	GPS Speed Included	GPS Speed Included	GPS Speed Included	Optional
Backlight	LED	LED	LED	LED
Waterproof Class	IPX7	IPX7	IPX7	IPX7
Mounting Options	Gimbal or Optional In-Dash Mounting Kit	Gimbal or Optional In-Dash Mounting Kit	Gimbal or Optional In-Dash Mounting Kit	Gimbal or Optional In-Dash Mounting Kit
Transducer - Standard	XNT 9 SI 180 T (Transom Mount)	XNT 9 DI T (Transom Mount)	XNT 9 20 T (Transom Mount)	XNT 9 DI T (Transom Mount)
Power Input	10.82 VDC	10.82 VDC	10.8-20 VDC	10.8-20 VDC
Power Draw	615 mA	615 mA	615 mA	650 mA

Model Options	—	PiranhaMAX 4 PT (Portable)
Interface	Keypad Control	Keypad Control
Display Size & Pixel Matrix	4.3" Diagonal 272H x 480V	4.3" Diagonal 272H x 480V
Bluetooth	—	—
Wi-Fi	—	—
Water Surface Temp	Built-In Transducer	Built-In Transducer
Speed	—	—
Backlight	LED	LED
Waterproof Class	IPX7	IPX7
Mounting Options	Tilt and Swivel or Optional In-Dash Mounting Kit	Tilt and Swivel or Optional In-Dash Mounting Kit
Transducer - Standard	XNT 9 DI T (Transom Mount)	XNT 9 28 T (Inside Hull or Transom Mount)
Power Input	10.8-20 VDC	10.8-20 VDC
Power Draw	180 mA	180 mA

SONAR CAPABILITIES

CHIRP Side Imaging CHIRP Down Imaging CHIRP Digital Sonar DualBeam PLUS	CHIRP Down Imaging CHIRP Digital Sonar DualBeam PLUS	CHIRP Digital Sonar DualBeam PLUS	Down Imaging Sonar DualBeam PLUS	DualBeam PLUS
20°, 60° 6 (2) 86° @ -10dB (Total of 180°)	16°, 28°, 45° 6 75° @ -10dB	20° 6 60° @ -10dB	16°, 28°, 45° 6 75° @ -10dB	20° 6 60° @ -10dB
50/83/200/455 kHz	50/83/200/455/800 kHz	50/83/200 kHz	200/455/800 kHz	83/200 kHz
83/200 (75-155/130-250 kHz) 50/200 (28-75/130-250 kHz) Low (28-75 kHz) Med (75-155 kHz) High (130-250 kHz)	83/200 (75-155/130-250 kHz) 50/200 (28-75/130-250 kHz) Low (28-75 kHz) Med (75-155 kHz) High (130-250 kHz)	83/200 (75-155/130-250 kHz) 50/200 (28-75/130-250 kHz) Low (28-75 kHz) Med (75-155 kHz) High (130-250 kHz)	—	—
455 kHz (420-520 kHz)	455 kHz (420-520 kHz) 800 kHz (790-850 kHz)	—	—	—
2.5" (63.5 mm)	2.5" (63.5 mm)	2.5" (63.5 mm)	2.5" (63.5 mm)	2.5" (63.5 mm)
500 Watts (RMS); 4000 Watts (Peak-to-Peak)	500 Watts (RMS); 4000 Watts (Peak-to-Peak)	500 Watts (RMS); 4000 Watts (Peak-to-Peak)	500 Watts (RMS); 4000 Watts (Peak-to-Peak)	500 Watts (RMS); 4000 Watts (Peak-to-Peak)
1500 ft (Standard Transducer) 2500 ft (Optional Transducer)	600 ft (Standard Transducer) 2500 ft (Optional Transducer)	1500 ft (Standard Transducer) 2500 ft (Optional Transducer)	600 ft (Standard Transducer)	1500 ft (Standard Transducer)
250 ft (76 m) - 455 kHz	—	—	—	—
350 ft (107 m) - 455 kHz	350 ft (107 m) - 455 kHz 350 ft (107 m) - 800 kHz	—	350 ft (107 m) - 455 kHz 350 ft (107 m) - 800 kHz	—

MAPPING AND GPS FEATURES (For available map cards see page 19)

GPS Receiver	Internal	Internal	Internal	○	○
Waypoints, Routes, Tracks/Points	2,500, 45, 50/20,000	2,500, 45, 50/20,000	2,500, 45, 50/20,000	—	—
Humminbird Basemap Built-In	●	●	●	—	—
Humminbird AutoChart Live	●	●	●	—	—
Humminbird AutoChart Live Ice	●	●	●	—	—

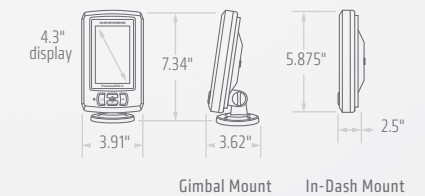
NETWORK CAPABLE OPTIONS

MEGA 360 Imaging	—	—	—	—
CHIRP Radar	—	—	—	—
NMEA 2000	—	—	—	—
5-Port Ethernet Switch	—	—	—	—
Minn Kota i-Pilot Link	—	—	—	—
Minn Kota Talon with Bluetooth	—	—	—	—

OPTIONAL ADD-ONS

Bluetooth Remote	—	—
External GPS Receiver	—	—
AIS Compatibility	—	—
AutoPilot	—	—
GPS with Heading Sensor	—	—

PIRANHAMAX 4

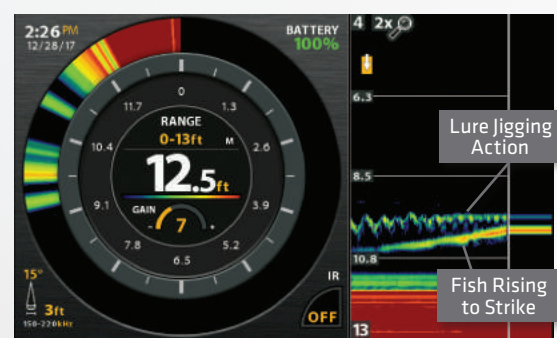




NEW
ICE HELIX SERIES

GET THE HOLE PICTURE.

Choose how your returns appear with viewing options made specifically for the ice angler—including flasher and 2D sonar combo views together on the same screen. Unlike flasher-only units, 2D sonar allows you to view lure and fish history, helping you find out what's turning the bites on, or off. Need a closer look? Zoom in 2X when in flasher mode, or up to 8X in 2D sonar view. To increase your odds of hooking a big one, you can even light up your glow-painted lures using Jig Charge Mode.



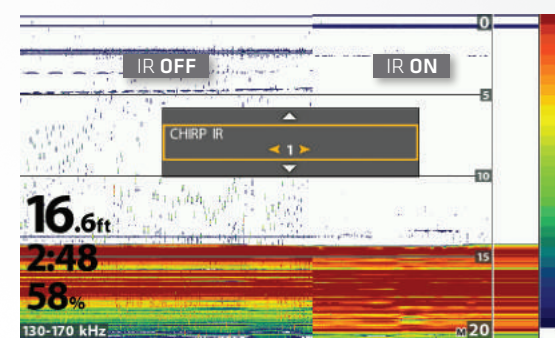
SEE FISH AND YOUR LURE MORE CLEARLY

The Dual Spectrum CHIRP transducer helps you easily see fish, your lure and activity along the bottom. Get high-resolution returns in both flasher and 2D sonar views, with ultra-fine 3/4" target separation.



NEW
AUTOCHART LIVE ICE

Fish the lake less traveled. Now built into ICE HELIX CHIRP GPS models, new AutoChart Live Ice allows anglers to create 1-foot contour maps on the ice for the first time ever. Find the spot on the spot, even on remote and unmapped lakes, and leave the guesswork to everyone else.



ELIMINATE INTERFERENCE FROM NEARBY FLASHERS

Six CHIRP Interference Rejection settings keep competing sonar signals from cluttering your screen, giving you a clear view all day long, in both 2D sonar and flasher modes.



ICE HELIX SERIES

G2 + G3 | G3N NETWORKING

ICE HELIX CHIRP · GPS ALL SEASON



ICE HELIX 7 CHIRP GPS AS G3N
HD 7" DISPLAY / 800H x 480V
#411210-1

ICE HELIX 5 CHIRP GPS AS G2
HD 5" DISPLAY / 800H x 480V
#411190-1

All necessary components are included for use on your boat or in portable applications.

- Transom mount transducer with temperature and optional suction cup mount
- Gimbal mounting bracket
- 6 ft (2 m) long power cable



ICE HELIX CHIRP · GPS



ICE HELIX 7 CHIRP GPS G3
HD 7" DISPLAY / 800H x 480V
#411200-1

ICE HELIX 5 CHIRP GPS G2
HD 5" DISPLAY / 800H x 480V
#410970-1

ICE HELIX CHIRP



ICE HELIX 5 CHIRP G2
HD 5" DISPLAY / 800H x 480V
#411180-1

ICE FLASHER SERIES



ICE 55
6-COLOR FLASHER WITH LCD DISPLAY
#407040-1

ICE 45
3-COLOR FLASHER WITH LCD DISPLAY
#407030-1

ICE 35
3-COLOR FLASHER
#407020-1



DUAL SPECTRUM CHIRP



INTERFERENCE REJECTION



ADJUSTABLE SONAR ZOOM



PRECISION GPS



HUMMINBIRD BASEMAP



AUTOCHART LIVE



ETHERNET NETWORKING



Bluetooth

ADD ONS
(GPS MODELS ONLY)

Humminbird LakeMaster | Humminbird LakeMaster PLUS | Humminbird CoastMaster | Humminbird SmartStrike
Humminbird AutoChart Live Zero Line | Navionics | Navionics+ | Navionics HotMaps Platinum | Navionics Platinum+
G3N Models Only: i-Pilot Link | CHIRP Radar | SM3000 Blackbox CHIRP | Minn Kota Talon
Bluetooth Remote (RC2) | AIS | AutoPilot | GPS Heading Sensor | S-Port Ethernet Switch



DUAL BEAM



ADJUSTABLE SONAR ZOOM



ULTRA-BRIGHT FIBER OPTICS



LCD DISPLAY



TARGET LINE

BUILT-IN TECHNOLOGIES VARY BY MODEL - SEE PAGES 42-43

Products shown with optional LakeMaster charts.
Features and specs are subject to change without notice.

ICE SERIES



ICE HELIX 7 CHIRP-GPS
G3N ALL SEASON



ICE HELIX 7 CHIRP-GPS
G3A



ICE HELIX 5 CHIRP-GPS
G2A ALL SEASON



ICE HELIX 5 CHIRP-GPS
G2A



ICE HELIX 5 CHIRP
G2A



ICE 55



ICE 45



ICE 35

Model Options	ICE HELIX 7 CHIRP-GPS	ICE HELIX 7 CHIRP-GPS	ICE HELIX 5 CHIRP-GPS	ICE HELIX 5 CHIRP-GPS	ICE HELIX 5 CHIRP
Interface	Keypad Control (X-Press Menu System)	Keypad Control (X-Press Menu System)	Keypad Control (X-Press Menu System)	Keypad Control (X-Press Menu System)	Keypad Control (X-Press Menu System)
Display Size & Pixel Matrix	800H x 480V, 7" Diagonal 256 Color TFT	800H x 480V, 7" Diagonal 256 Color TFT	800H x 480V, 5" Diagonal 256 Color TFT	800H x 480V, 5" Diagonal 256 Color TFT	800H x 480V, 5" Diagonal 256 Color TFT
Bluetooth	Built-In	Built-In	Built-In	Built-In	Built-In
Wi-Fi	—	—	—	—	—
Water Surface Temp	Open Water Transducer	Open Water Transducer	Open Water Transducer	Open Water Transducer	Open Water Transducer
Speed	GPS Speed Included	GPS Speed Included	GPS Speed Included	GPS Speed Included	GPS Speed Included
Backlight	LED	LED	LED	LED	LED
Waterproof Class	IPX7	IPX7	IPX7	IPX7	IPX7
Mounting Options	Portable or Gimbal Mount	Portable or Gimbal Mount	Portable or Gimbal Mount	Portable or Gimbal Mount	Portable or Gimbal Mount
Transducer - Standard	XI 9 1521 XNT 9 HW T	XI 9 1521	XI 9 1521 XNT 9 20 T	XI 9 1521	XI 9 1521
Transducer - Cable Length	8 ft	8 ft	8 ft	8 ft	8 ft
Operating Frequency	130 kHz to 250 kHz	130 kHz to 250 kHz	130 kHz to 250 kHz	130 kHz to 250 kHz	130 kHz to 250 kHz
Zoom	Up to 8X - Can adjust to see any part of water column	Up to 8X - Can adjust to see any part of water column	Up to 8X - Can adjust to see any part of water column	Up to 8X - Can adjust to see any part of water column	Up to 8X - Can adjust to see any part of water column
Interference Rejection	6 Modes	6 Modes	6 Modes	6 Modes	6 Modes
Noise Rejection	—	—	—	—	—
Gain	20 Steps	20 Steps	20 Steps	20 Steps	20 Steps
Color Palettes	19	19	19	19	19
Power Input	10.8-20 VDC	10.8-20 VDC	10.8-20 VDC	10.8-20 VDC	10.8-20 VDC
Battery Included	9 Ah	9 Ah	9 Ah	9 Ah	9 Ah
Battery Status Indicator	Battery Icon Indicator	Battery Icon Indicator	Battery Icon Indicator	Battery Icon Indicator	Battery Icon Indicator
Power Draw	850 mA	850 mA	600 mA	600 mA	600 mA

SONAR CAPABILITIES

Sonar - Standard	DualSpectrum CHIRP	DualSpectrum CHIRP	DualSpectrum CHIRP	DualSpectrum CHIRP	DualSpectrum CHIRP
Sonar - Coverage	15° 6 21° @ -3dB	15° 6 21° @ -3dB	15° 6 21° @ -3dB	15° 6 21° @ -3dB	15° 6 21° @ -3dB
Sonar - Frequencies Supported	50/83/200 kHz	50/83/200 kHz	50/83/200 kHz	50/83/200 kHz	50/83/200 kHz
CHIRP - Frequencies Supported	83/200 (75-155/130-250 kHz) 50/200 (28-75/130-250 kHz) Full Mode (150-220 kHz) Narrow Mode (180-240 kHz) Wide Mode (140-200 kHz)	83/200 (75-155/130-250 kHz) 50/200 (28-75/130-250 kHz) Full Mode (150-220 kHz) Narrow Mode (180-240 kHz) Wide Mode (140-200 kHz)	83/200 (75-155/130-250 kHz) 50/200 (28-75/130-250 kHz) Full Mode (150-220 kHz) Narrow Mode (180-240 kHz) Wide Mode (140-200 kHz)	83/200 (75-155/130-250 kHz) 50/200 (28-75/130-250 kHz) Full Mode (150-220 kHz) Narrow Mode (180-240 kHz) Wide Mode (140-200 kHz)	83/200 (75-155/130-250 kHz) 50/200 (28-75/130-250 kHz) Full Mode (150-220 kHz) Narrow Mode (180-240 kHz) Wide Mode (140-200 kHz)
CHIRP Imaging - Frequencies Supported	—	—	—	—	—
Target Separation	3/4" (19 mm)	3/4" (19 mm)	3/4" (19 mm)	3/4" (19 mm)	3/4" (19 mm)
Power Output (Max)	500 Watts (RMS); 4000 Watts (Peak-to-Peak)	500 Watts (RMS); 4000 Watts (Peak-to-Peak)	500 Watts (RMS); 4000 Watts (Peak-to-Peak)	500 Watts (RMS); 4000 Watts (Peak-to-Peak)	500 Watts (RMS); 4000 Watts (Peak-to-Peak)
Depth - Sonar	400 ft (Standard Transducer) 2500 ft (Optional Transducer)	400 ft (Standard Transducer) 2500 ft (Optional Transducer)	400 ft (Standard Transducer) 2500 ft (Optional Transducer)	400 ft (Standard Transducer) 2500 ft (Optional Transducer)	400 ft (Standard Transducer) 2500 ft (Optional Transducer)

MAPPING AND GPS FEATURES (For available map cards see page 19)

GPS Receiver	Internal	Internal	Internal	Internal	Internal
Waypoints, Routes, Tracks/Points	2,750, 47, 50/20,000	2,750, 47, 50/20,000	2,750, 47, 50/20,000	2,750, 47, 50/20,000	2,750, 47, 50/20,000
Humminbird Basemap Built-In	●	●	●	●	—
Humminbird AutoChart Live (In Open Water Mode)	●	●	●	●	—
Humminbird AutoChart Live Ice (In Ice Fishing Mode)	●	●	●	●	—

NETWORK CAPABLE OPTIONS (These features are only available while operating in Open Water Mode)

MEGA 360 Imaging	—	—	—	—	—
CHIRP Radar	○	—	—	—	—
NMEA 2000	—	—	—	—	—
5-Port Ethernet Switch	○	—	—	—	—
Minn Kota i-Pilot Link	○	—	—	—	—
Minn Kota Talon with Bluetooth	○	—	—	—	—

OPTIONAL ADD-ONS (These features are only available while operating in Open Water Mode)

Bluetooth Remote	○	—	—	—	—
External GPS Receiver	○	○	—	—	—
AIS Compatibility	○	○	—	—	—
AutoPilot	○	○	—	—	—
GPS with Heading Sensor	○	○	—	—	—

● Included ○ Optional — Not supported *In-Dash Mounting Kit for PiranhaMAX does not support models manufactured before 2009. Features and specifications subject to change without notice.

Model Options	ICE 55	ICE 45	ICE 35
Interface	Keypad/Dial Control	Keypad/Dial Control	Keypad/Dial Control
Display Size & Pixel Matrix	526 Segment 6-Color Fiber Optic LCD Center	526 Segment 3-Color Fiber Optic LCD Center	526 Segment 3-Color Fiber Optic
Bluetooth	—	—	—
Wi-Fi	—	—	—
Water Surface Temp	—	—	—
Speed	—	—	—
Backlight	LED	LED	LED
Waterproof Class	IPX7	IPX7	IPX7
Mounting Options	Portable	Portable	Portable
Transducer - Standard	XI 9 19	XI 9 19	XI 9 19
Transducer - Cable Length	8 ft	8 ft	8 ft
Operating Frequency	240/455 kHz 2X - Can adjust to see any part of water column	240/455 kHz 2X - Can adjust to see any part of water column	240/455 kHz 2X - Can adjust to see any part of water column
Zoom	—	—	—
Interference Rejection	10 Steps	10 Steps	10 Steps
Noise Rejection	50 Steps	50 Steps	50 Steps
Gain	5	3	3
Color Palettes	10.8-20 VDC	10.8-20 VDC	10.8-20 VDC
Battery Included	9 Ah	9 Ah	7 Ah
Battery Status Indicator	Digital % on LCD	Digital % on LCD	26 Segments Full to Empty
Power Draw	250 mA	250 mA	210 mA

Sonar - Standard	Selectable Dual Frequency	Selectable Dual Frequency	Selectable Dual Frequency
Sonar - Coverage	19° 6 9° @ -3dB	19° 6 9° @ -3dB	19° 6 9° @ -3dB
Sonar - Frequencies Supported	240/455 kHz	240/455 kHz	240/455 kHz
CHIRP - Frequencies Supported	—	—	—
CHIRP Imaging - Frequencies Supported	—	—	—
Target Separation	2.5" (63.5 mm)	2.5" (63.5 mm)	2.5" (63.5 mm)
Power Output (Max)	300 Watts (RMS); 2400 Watts (Peak-to-Peak)	225 Watts (RMS); 1800 Watts (Peak-to-Peak)	100 Watts (RMS); 1800 Watts (Peak-to-Peak)
Depth - Sonar	200 ft	200 ft	200 ft

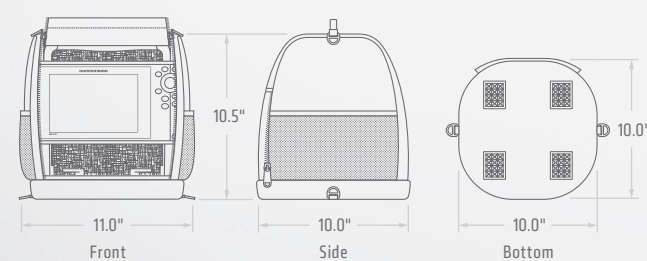
GPS Receiver	—	—	—
Waypoints, Routes, Tracks/Points	—	—	—
Humminbird Basemap Built-In	—	—	—
Humminbird AutoChart Live (In Open Water Mode)	—	—	—
Humminbird AutoChart Live Ice (In Ice Fishing Mode)	—	—	—

OPTIONAL ADD-ONS (These features are only available while operating in Open Water Mode)

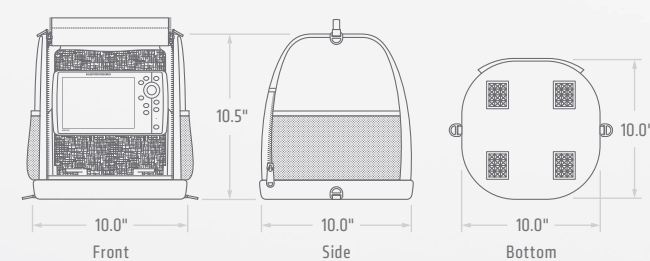
Bluetooth Remote	—	—	—
External GPS Receiver	—	—	—
AIS Compatibility	—	—	—
AutoPilot	—	—	—
GPS with Heading Sensor	—	—	—



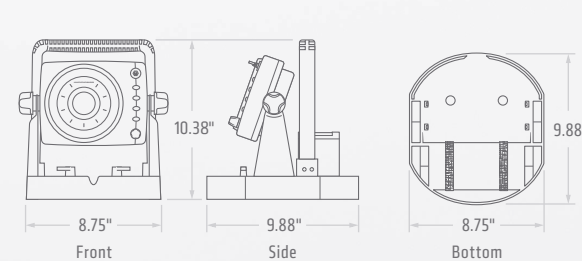
ICE HELIX 7



ICE HELIX 5



ICE FLASHER MODELS





ACCESSORIES

- 46 | Transducer Hardware
- 48 | MEGA 360 Imaging Transducers
Bluetooth Remote
- 49 | CHIRP Radar
NMEA 2000
- 50 | Depth Gauge
External GPS Modules
Temp/Speed Sensors
Power Cables
Portable Battery Kit
- 51 | Ethernet Cables
Ethernet 5-Port Switch
- 52 | AutoPilot
- 53 | AIS
- 54 | AutoChart PC Software
- 55 | Fish Finder Mounting Hardware
Fish Finder Covers/Cases
Apparel
- 56 | Humminbird FAQs
- 58 | Boat Rigging Guide

TRANSDUCERS



TRANSDUCER
Mount on the transom (back of the boat).
Available on many models, the impact release feature pivots transducer out of the way if struck by an object.



TROLLING MOTOR
Mount on most trolling motors. Low-profile shape reduces drag and hang-ups on weeds.



IN-HULL
Mount to inside of hulls most single-layer fiberglass hulls using slow-cure epoxy. (Cored fiberglass, metal or wood hulls not acceptable. Hull must be free of trapped air and voids.)



PORTABLE
Mount on transom or side of most smooth-surface wood, aluminum or fiberglass boats. Heavy-duty suction cup holds transducer at trolling speeds only.



BRONZE
Ideal for large boats and boats with in-board motors. Not recommended for trailered boats. Professional installation recommended.



PLASTIC
Economic alternative to bronze transducer. Mounts on thinner hulls such as aluminum. Not recommended for trailered boats. Professional installation recommended.



ICE
This Dual Beam transducer can be used as replacement or to convert any portable unit into an ice-ready fish finder.

1	XM 9 HW MSI T	XTM 9 HW MSI T	–	–	–	XPTH 9 HW MSI T	–
2	XM 9 HW MDI T	XTM 9 HW MDI T	–	–	–	XPTH 9 HW MSI T	–
3	XNT 9 HW MSI 150 T	XTM 9 HW MSI 150 T	–	–	–	–	–
4	XNT 9 HW MDI 75 T	XTM 9 HW MDI 75 T	–	–	–	–	–
5	XNT 9 HW T	XTM 9 HW T	XP 9 HW T XP 9 HW	XPT 9 HW T	–	XPTH 9 HW T	–
6	XM 9 20 MSI T	XTM 9 20 MSI T	–	–	–	XPTH 9 20 MSI T	–
7	XM 9 MDI T	XTM 9 MDI T	–	–	–	–	–
8	XNT 9 20 T XNT 9 20	XTM 9 20 T	XP 9 20 T XP 9 20 XAP 9 20	XPT 9 20 T	XTH 9 20	XTH 9 20 P	XI 9 20
9	XNT 9 SI 180 T	XTM 9 SI 180 T	–	–	–	XPTH 9 HD SI 180 T	–
10	XHS 9 HD SI 180 T	XTM 9 HD SI 180 T	–	–	–	XPTH 9 HD SI 180 T	–
11	XNT 9 DI T	XTM 9 WIDE DI 20 T	–	–	–	XPTH 9 DI T	–
12	XNT 9 DI T	XTM 9 DI 25 T	–	–	–	XPTH 9 DI T	–
13	–	–	–	–	–	–	XI 9 19
14	XNT 9 28 T	XTM 9 28 T	–	–	–	–	–
15	XNT 9 20 T XNT 9 20	XTM 9 20 T	XP 9 20 T XP 9 20 XAP 9 20	XPT 9 20 T	XTH 9 20	XTH 9 20 P	XI 9 1521
16	XNT 9 HW T	XTM 9 HW T	XP 9 HW T XP 9 HW	XPT 9 HW T	–	XPTH 9 HW T	–
17	XM 14 HW MSI T	XTM 14 HW MSI T	–	–	–	XPTH 14 HW MSI T	–
18	XM 14 HW MDI T	XTM 14 HW MDI T	–	–	–	–	–
19	XNT 14 HW T	XTM 14 HW T	XP 14 HW T XP 14 HW	–	–	XPTH 14 HW T	–
20	XM 14 20 MDI T	XTM 14 20 MDI T	–	–	–	–	–
21	XNT 14 20 T XNT 14 74 T	XTM 14 20 T	XP 14 20 XP 14 20 T	–	XTH 14 20	XPTH 14 20 T XPTH 14 74 T	–
22	XNT 14 DI T	XTM 14 DI T	–	–	–	XPTH 14 20 MSI T	–
23	XM 14 20 MSI T	XTM 14 20 MSI T	–	–	–	XPTH 14 20 MSI T	–
24	XM 14 74 MSI T	–	–	–	–	XPTH 14 74 MSI T	–
25	XM 14 20 MSI T	–	–	–	–	XPTH 14 20 MSI T XPTH 14 74 MSI T	–

TRANSDUCER MOUNTING



TRANSDUCER MOUNT KIT
Mounting hardware for transom-mount transducers. Kits include all mounting brackets, hardware and cable clamps required for installation.



TROLLING MOTOR MOUNT KIT
Mounting hardware kit adapts our standard transom-mount transducers for use on the trolling motor. Kits include all mounting brackets, hardware and wire ties required for installation.



PORTABLE MOUNT KIT
For use with portable transducers. Includes all hardware and suction cup.



ICE MOUNT KIT
Transducer mounting hardware and float for XI 9 19 and XI 9 20 ice transducers.



KAYAK MOUNT KIT
Transducer mounting hardware for installation in a kayak. Kit includes surface-preparation products in addition to a transducer cradle and adhesive products.

MHX XM HW	AD MTM HW MSI	–	–	–
MHX XM HW	AD MTM HW MDI	–	–	–
MHX XNT or MHX MXNT	AD XTM 9	–	–	–
MHX XNT or MHX MXNT	AD XTM 9	–	–	–
MHX XNT or MHX MXNT	AD XTM 9	MHX XNPT	–	–
MHX XM HW	AD MTM	–	–	–
MHX XNT or MHX MXNT	AD XTM 9	MHX XNPT	–	–
MHX XNT or MHX MXNT	AD XTM 9	MHX XNPT	MHX ICE	MHX XMK
MHX XNT or MHX MXNT	AD XTM 9	–	–	–
MHX HS	AD STM 7	–	–	–
MHX XNT or MHX MXNT	AD XTM 9	–	–	MHX XMK DI
MHX XNT or MHX MXNT	AD XTM 9	MHX XNPT	–	MHX XMK DI
–	–	–	MHX ICE	–
MHX XNT or MHX MXNT	AD XTM 9	MHX XNPT	–	MHX XMK
MHX XNT or MHX MXNT	AD XTM 9	MHX XNPT	MHX ICE	MHX XMK
MHX XNT or MHX MXNT	AD XTM 9	MHX XNPT	MHX ICE	–
MHX XM HW	AD MTM HW MSI	–	–	–
MHX XM HW	AD MTM HW MDI	–	–	–
MHX XNT or MHX MXNT	AD XTM 9	–	–	–
MHX XNT or MHX MXNT	AD XTM 9	MHX XNPT	–	MHX XMK DI
MHX XNT or MHX MXNT	AD XTM 9	MHX XNPT	–	MHX XMK
MHX XNT or MHX MXNT	AD XTM 9	MHX XNPT	–	MHX XMK DI
MHX XM HW	AD MTM	–	–	–
MHX XM HW	AD MTM	–	–	–
MHX XM HW	AD MTM	–	–	–

TRANSDUCER CABLES



EXTENSION
10 FT AND 30 FT
Add extra length to standard transducer cables. Available in two lengths, cable plugs into existing transducer and your fish finder.



SPLITTER
DUAL BEAM
Continuously splits Side Imaging signal and Dual Beam signal. For use with a second transducer without a switch.



LEFT/RIGHT
Splits Side Imaging source signal into left and right output for two Side Imaging transducers.

EC M10 EC M30	9 M SIDB Y	9 M SILR Y
EC M10 EC M30	–	–
EC M10 EC M30	9 M SIDB Y	9 M SILR Y
EC M10 EC M30	–	–
EC M10 EC M30	–	–
EC M10 EC M30	9 M SIDB Y	9 M SILR Y
EC M10 EC M30	–	–
EC M10 EC M30	–	–
EC M10 EC M30	9 M SIDB Y	9 M SILR Y
EC M10 EC M30	9 M SIDB Y	9 M SILR Y
EC M10 EC M30	–	–
EC M10 EC M30	–	–
EC M10 EC M30	–	–
EC M10 EC M30	–	–
EC M10 EC M30	–	–
EC M10 EC M30	–	–
EC M3 14W10 EC M3 14W30	–	–
EC M3 14W10 EC M3 14W30	14 M SIDB Y	14 M SILR Y
EC M3 14W10 EC M3 14W30	–	–
EC M3 14W10 EC M3 14W30	–	–
EC M3 14W10 EC M3 14W30	–	–
EC M3 14W10 EC M3 14W30	–	–
EC M3 14W10 EC M3 14W30	–	–
EC M3 14W10 EC M3 14W30	14 M SIDB Y	14 M SILR Y
EC M3 14W10 EC M3 14W30	14 M SIDB Y	14 M SILR Y
EC M3 14W10 EC M3 14W30	14 M SIDB Y	14 M SILR Y

MODEL GROUP NUMBER

1	HELIX 12 MSI-GPS G3N HELIX 10 MSI-GPS G3N HELIX 9 MSI-GPS G3N HELIX 8 MSI-GPS G3N	HELIX 12 CHIRP-GPS G2N, HELIX 12 CHIRP-GPS HELIX 10 CHIRP-GPS G2N, HELIX 10 SONAR-GPS HELIX 9 CHIRP-GPS G2N, HELIX 9 SONAR-GPS	13	ICE 35, 45, 55	20	SOLIX 15 SOLIX 12 SOLIX 10
2	HELIX 12 MDI-GPS G3N HELIX 10 MDI-GPS G3N HELIX 9 MDI-GPS G3N	HELIX 7 SONAR G2, HELIX 7 CHIRP-GPS G2, HELIX 7 CHIRP-GPS G2N, HELIX 7 SONAR, HELIX 7 SONAR-GPS HELIX 5 SONAR G2, HELIX 5 CHIRP-GPS G2, HELIX 5 SONAR, HELIX 5 SONAR-GPS	14	PiranhaMAX 4, PiranhaMAX 176i, 195c, 196ci, 197c	21	SOLIX 15 SOLIX 12 SOLIX 10 ONIX – 200/83 kHz ONIX – 200/50 kHz
3	HELIX 7 MSI-GPS G3N, HELIX 7 MSI-GPS G3	1159ci HD, 1158c HD, 1158c, 1157c 959ci HD, 958c HD, 958c, 957c, 917c 859ci HD, 858c HD, 858c 788ci HD, 788c, 788ci, 778c HD, 768c, 728, 718 688ci HD, 678c HD	15	ICE HELIX 7 CHIRP-GPS G2N ICE HELIX 7 CHIRP-GPS G2 ICE HELIX 5 CHIRP-GPS G2 ICE HELIX 5 CHIRP G2	22	SOLIX 15 SOLIX 12 SOLIX 10 ONIX – Down Imaging
4	HELIX 8 MDI-GPS G3N HELIX 7 MDI-GPS G3N, HELIX 7 MDI-GPS G3	597ci HD, 597ci, 596c HD, 596c, 587ci HD, 587ci, 586c HD, 586c, 581ci 386ci, 385ci, 365, 345c, 325 PiranhaMAX 190c, 170, 160, 155, 153, 150, 143	16	ICE HELIX 7 CHIRP-GPS G3N ICE HELIX 7 CHIRP-GPS G3	23	ONIX – Side Imaging – 200/83 kHz
5	HELIX 12 CHIRP-GPS G3N HELIX 10 CHIRP-GPS G3N HELIX 9 CHIRP-GPS G3N HELIX 8 CHIRP-GPS G3N HELIX 7 CHIRP-GPS G3N HELIX 7 CHIRP-GPS G3	HELIX 7 CHIRP-SI-GPS G2, HELIX 7 CHIRP-SI-GPS G2N, HELIX 7 SI-GPS HELIX 5 CHIRP-SI-GPS G2, HELIX 5 SI-GPS 899ci HD 798ci HD, 798ci, 798c 698ci HD 598ci HD 398ci	17	SOLIX 15 MSI G2 SOLIX 12 MSI G2 SOLIX 10 MSI G2	24	ONIX – Side Imaging – 200/50 kHz
6	HELIX 12 CHIRP-MEGA SI-GPS G2N HELIX 10 CHIRP-MEGA SI-GPS G2N HELIX 9 CHIRP-MEGA SI-GPS G2N	HELIX 12 CHIRP-DI-GPS G2N, HELIX 12 CHIRP-DI-GPS HELIX 10 CHIRP-DI-GPS G2N, HELIX 10 DI-GPS	18	SOLIX 15 MDI G2 SOLIX 12 MDI G2 SOLIX 10 MDI G2	25	SOLIX 15 MSI G2, SOLIX 15 MEGA SI SOLIX 12 MSI G2, SOLIX 12 MEGA SI SOLIX 10 MSI G2, SOLIX 10 MEGA SI
7	HELIX 12 CHIRP-MEGA DI-GPS G2N HELIX 10 CHIRP-MEGA DI-GPS G2N HELIX 9 CHIRP-MEGA DI-GPS G2N	HELIX 7 CHIRP-DI G2, HELIX 7 CHIRP-DI-GPS G2, HELIX 7 CHIRP-DI-GPS G2N, HELIX 7 DI-GPS, HELIX 7 DI HELIX 5 DI G2, HELIX 5 CHIRP-DI-GPS G2, HELIX 5 DI-GPS, HELIX 5 DI 788ci HD DI 688ci HD DI, 688c DI 597ci HD DI, 596c HD DI, 581i HD DI, 571 HD DI, 570 DI, 561 DI 386ci DI, 385ci DI, 346c DI, 345c DI	19	SOLIX 15 MSI G2, SOLIX 15 MDI G2 SOLIX 12 MSI G2, SOLIX 12 MDI G2 SOLIX 10 MSI G2, SOLIX 10 MDI G2	NOTE: Transducers in this category provide 2D readings only.	
		PiranhaMAX 4 DI, PiranhaMAX 197c DI				

MEGA IMAGING NOW BUILT INTO MINN KOTA TROLLING MOTORS

See what your trolling motor sees. Humminbird MEGA Side Imaging and MEGA Down Imaging are now built into select Minn Kota trolling motors (see chart below for model information). Just connect one of these to a compatible SOLIX or HELIX for a crystal clear view with no cluttered wires or clamps, and a transducer that's fully protected. Please note: accessory adapter cable required to connect trolling motor to compatible HELIX unit.



Built-In Transducer	Minn Kota Trolling Motors
Built-In MEGA Down Imaging	Ultrex, Ultrera, Terova and Fortrex
Built-In MEGA Side Imaging	Ultrax and Ultrera

AIRMAR CHIRP TRANSDUCERS

Take advantage of the full capability of SOLIX and HELIX CHIRP Digital Sonar models with Airmar® CHIRP Digital Sonar transducers. Durable, precise and innovative, these industry-leading transducers are available through your Humminbird dealer.



SM3000 ETHERNET SONAR MODULE

To add deep-water CHIRP capability to your SOLIX Series unit, you must purchase this black box Ethernet solution. This solution supports Low-Medium, Medium-High and Low-High CHIRP Digital Sonar frequencies.

SM3000
#408040-1

Models
SOLIX Series



MEGA 360 IMAGING TRANSDUCERS

Upgrading to incredible 360° views is as simple as adding the MEGA 360 Imaging transducer to your Minn Kota trolling motor and connecting to your Humminbird fish finder with MEGA Imaging+. The Ultrex MEGA 360 Imaging transducer is designed to mount to the Minn Kota Ultrex for uninterrupted use, even when in Spot-Lock mode. The Fortrex MEGA 360 Imaging transducer is compatible with both Minn Kota Fortrex and Maxxum trolling motors. With two great options, you'll have no trouble getting there once you see fish.



MEGA 360 IMAGING - FORTREX
#411260-1

MEGA 360 IMAGING - ULTREX
#411250-1



Some rigging configurations will require additional accessories, please see page 56 for more details.



Models	Recommended Accessories
SOLIX G2 Models	AS GPS HS (#408400-1) AS GPS NMEA (#720080-1)
HELIX 12, 10, 9, 8, 7 G3N Series	AS GPS HS (#408400-1)

BLUETOOTH REMOTE

Take wireless control of your Humminbird. Our remote lets you mark waypoints on the fly, zoom in and out, adjust sonar sensitivity and toggle through your favorite custom views. Each key has a short-press and long-press function, enabling you to customize the remote's capabilities to reflect your fishing style. For instance, a long press of the mark button can be programmed to power your unit on or off, or even create a Spot-Lock location when connected to a Minn Kota trolling motor with i-Pilot Link.

Everything's visible and controllable from anywhere on the boat, so you don't have to stop fishing to control your Humminbird.



Includes wireless dongle for non-Bluetooth products.

AS RC1
#409480-1



RC2
#410180-1

See remote compatibility below.

Models	Remotes
SOLIX Series HELIX G2N and G3N Series ICE HELIX G2N and G3N Series	RC2
ONIX Series HELIX 12, 10, 9 Series	AS RC1

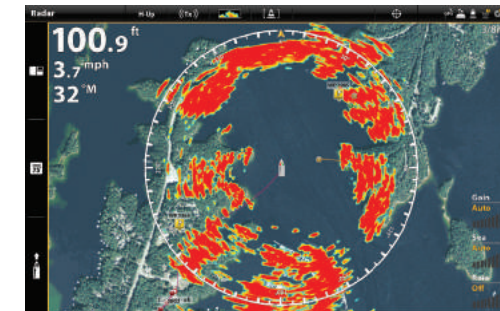
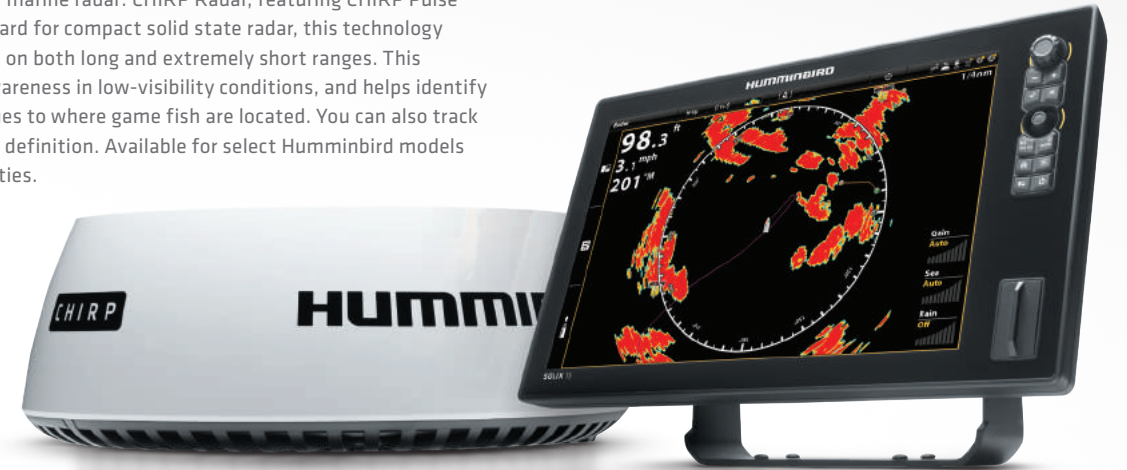
CHIRP RADAR

Introducing the next generation of marine radar: CHIRP Radar, featuring CHIRP Pulse Compression. Setting a new standard for compact solid state radar, this technology delivers superior target separation on both long and extremely short ranges. This translates to better situational awareness in low-visibility conditions, and helps identify birds and floating obstacles for clues to where game fish are located. You can also track weather and vessels with amazing definition. Available for select Humminbird models with Ethernet networking capabilities.

HB 2124
#750013-1

Some compatible Humminbird models require additional adapter, listed below.

Models	Cables Required
SOLIX, ONIX Series	Built-in
HELIX G2N and G3N Series	AS EC QDE (#720074-1)



Clearly identify this upcoming bridge with the precise imaging of Humminbird CHIRP Radar.

SOLID STATE PERFORMANCE

Thanks to solid state technology, Humminbird radar is safe, reliable and lightweight. At 12.3 lbs, the radar unit weighs 50% less than traditional magnetron radars and offers safe emissions with a low power radar transmitter. It's also ready to use in seconds, without a lengthy warm-up period.

CHIRP PULSE COMPRESSION

Along with excellent short-range detection (18 foot minimum range), CHIRP Pulse Compression ensures more energy reaches each target for superior imaging at long ranges up to 24 nautical miles. CHIRP Pulse Compression identifies small or weak targets, even while positioned close to strong returns.

SUPERIOR RADAR IMAGING

See things more clearly with Humminbird CHIRP Radar. Shorelines, buoys, other boats and weather—watch it all take shape on your display for maximum safety and a competitive edge. Available for all networking models, advanced target separation displays targets with unsurpassed resolution and quality.

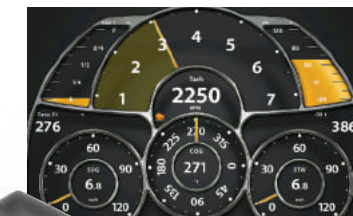
SPECIFICATIONS

Antenna Dimension	21" Enclosed Dome
Antenna Type	Patch Array
Peak Power Output	20W
Transmit Frequency	9354 to 9446 MHz
Beamwidth (nominal)	4.9° Horizontal and 20° Vertical
Input Voltage	12 or 24 VDC (Min: 10.8V, Max: 31.2V)
Networking	Ethernet
Max. Range Scale	1/16" to 24 nautical miles
Power Consumption	Transmit Mode 17W; Standby Mode 7W
Duplexer	Circulator
Pulse Widths (3dB)	40 ns to 14.7 µs
CHIRP Lengths	400 ns to 20 µs
CHIRP Bandwidth	Up to 32 MHz
IF Bandwidth	26 MHz
Noise	Less than 4dB
Polarization	Horizontal
Weight	5.6 kg (12.3 lb)
Waterproofing	IPX6



NMEA 2000

Boat performance, weather or water conditions, make sense of it all with NMEA 2000 networking on your Humminbird fish finder. Connect sensors to a NMEA 2000 backbone (sold separately) to create a network with your boat's Humminbird control head. Bearing, depth, engine status, tank level, electrical—you name it, we can display it. Conserve valuable fuel, make informed decisions and see red flags with an at-a-glance view of all relevant information. You'll fully understand the present—and anticipate what's next. Plug your NMEA 2000 network directly into all SOLIX Series models. For HELIX Series models, a waterproof black-box solution (AS ETH NMEA2K) is available.



AS ETH NMEA2K
#408390-1

MULTI-SENSOR SUPPORT

Display and easily interpret virtually any NMEA 2000 sensor with intuitive, high-color graphics and text. You can even view data for multiple engines and fuel tanks.

SIMPLE CUSTOMIZATION

Easily customize data boxes to suit your needs. Focus on a single reading or view multiple gauges at once for a more complete picture.

Some compatible Humminbird models require additional accessories, listed below.

Models	Required Accessories
SOLIX Series	N/A - NMEA 2000 built into SOLIX
HELIX 12, 10, 9, 8, Series	(1) AS ETH NMEA2K, (1) AS EC (5/10/15/20/30E) and (1) AS EC QDE
HELIX 7 G2N/G3N Series	(1) AS ETH NMEA2K, (1) AS EC (5/10/15/20/30E) and (1) AS EC QDE

HDR 650

DEPTH GAUGE

Humminbird Digital Depth Gauges give you instant, reliable depth readings even at speeds of up to 70 mph, and can alert you to both deep and shallow water. Installation in any existing 2 1/8" opening is easy, and they wire to the ignition to automatically turn on. We didn't stop there; the display reads in feet, meters or fathoms, and you can pick a color to complement your boat's gauges.



Customizable (two face plates and three trim rings included)

SONAR

Single Beam
200 kHz / 20° @ -10 dB
Depth: 600 ft

HDR 650
#407860-1

EXTERNAL GPS MODULES

Choose from two external GPS solutions. The AS GRP provides fast and precise position fixes accurate within 8.2 feet, even in lower signal areas. With an integrated heading sensor, the AS GPS HS lets you see compass information and your boat's orientation while moving or sitting still.



AS GPS HS
#408400-1

AS GRP
#408920-1

Some Humminbird models require additional accessories, see below.

Models	Accessories Required
SOLIX Series	AS GPS NMEA cable required to connect external GPS module
HELIX 12, 10, 9, 8 Series	N/A
HELIX 7 G2N and G3N Series	N/A

TEMP/SPEED COMBO

Combines two of the most popular accessory inputs into one compact transom-mount unit. Monitor temperature from 25°F to 99°F and speed from 2 to 70 mph. Includes 20-foot cable and hardware.



Models	Temp/Speed Sensors
SOLIX Series	PC 12ST plus TS W
HELIX 12, 10, 9, 8 Series	TS W
HELIX 7, 5 Series	TS W plus ASTY

TS W
#730000-1

PADDLE WHEEL REPLACEMENT KIT

Repair kit for TS W and SW. Includes wheel and axle clip.



#540158-1

Models
SOLIX Series
HELIX 12, 10, 9, 8, 7, 5 Series

POWER CABLES

Cables come in standard six-foot lengths, but can be extended with 18awg multi-strand wire. Connect power to a fuse panel, or through inline fuse holder (not included) if hooked directly to the battery.



PC 12 OR
#720085-1

PC 11
#720057-1

PC 10
#720002-1

PC HELIX 12V DC
#720105-1

Models	Cables
SOLIX Series	PC 12
HELIX 12, 10, 9, 8, 7, 5 Series	PC 11 (recommended for all Down Imaging and Side Imaging products) PC HELIX 12V DC (Not intended for permanent installation) PC 10
HELIX 7, 5 Series Piranha and PiranhaMAX Series	PC HELIX 12V DC (Not intended for permanent installation)
ICE 34,45,55	PC PT Portable

SEALED LEAD BATTERY KIT

12 volt, 9-amp hour AGM battery and wall charger for use with ICE HELIX, ICE flashers, portable models and portable conversion kits.



Models	Battery Kit
HELIX 5, 7 models ICE 35, 45, 55 models HELIX 5 portable models	9 AH BK #770030-1

ETHERNET NETWORKING CABLES

ETHERNET CABLES

Quickly set up an Ethernet connection between two Humminbird Ethernet-capable units. Available in five lengths—you select the length you need.



AS EC 5E (5 FT)
#720073-6

AS EC 10E (10 FT)
#720073-2

AS EC 15E (15 FT)
#720073-5

AS EC 20E (20 FT)
#720073-3

AS EC 30E (30 FT)
#720073-4

ETHERNET ADAPTER CABLE

Allows Ethernet connection to HELIX 12/10/9, Ethernet-ready select 800/900/1100 Series and 700 HD Series units. Cable is 12-inches long.



AS EC QDE (12 IN)
#720074-1

ETHERNET EXTENSION CABLE

Easily extend the reach of your Ethernet connection with this 30-foot cable.

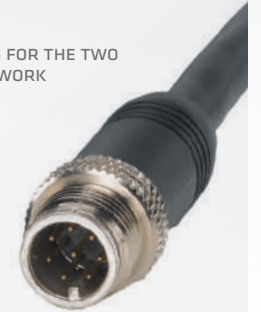


AS ECX 30E (30 FT)
#760025-1

CONNECTION CHART

STEP 1 FIND THE GROUP NUMBERS FOR THE TWO MODELS YOU PLAN TO NETWORK

GROUP 1	SOLIX Series	
GROUP 2	HELIX 12 Series HELIX 10 Series HELIX 9 Series HELIX 8 Series HELIX 7 G2N and G3N Series	
GROUP 3	1199ci HD 1159ci HD DI 1159ci HD 999ci HD 959ci HD DI	959ci HD 899ci HD 859ci HD DI 859ci HD



STEP 2 CROSS REFERENCE THE GROUP NUMBERS TO FIND THE REQUIRED CABLES TO NETWORK YOUR MODELS

	1	2	3
1	Ethernet Cable	Ethernet Cable plus (1) AS EC QDE	Ethernet Cable plus (1) AS EC QDE
2	Ethernet Cable plus (1) AS EC QDE	Ethernet Cable plus (2) AS EC QDE	Ethernet Cable plus (2) AS EC QDE
3	Ethernet Cable plus (1) AS EC QDE	Ethernet Cable plus (2) AS EC QDE	Ethernet Cable plus (2) AS EC QDE

5-PORT ETHERNET SWITCH

Easily create a network using Ethernet-capable Humminbird fish finders. This waterproof, plug-and-play switch allows you to connect up to five Ethernet-based components. Some Sonar/GPS models require an additional adapter (see list on right).

Models	Cables Required
SOLIX Series	AS EC 5/10/15/20/30E*
HELIX 12, 10, 9, 8, Series	AS EC 5/10/15/20/30E plus AS EC QDE
HELIX 7 G2N/G3N Series	AS EC 5/10/15/20/30E plus AS EC QDE

* (1) Ethernet cable required to connect each networking fish finder (see Connection Chart above)



AS ETH 5PXG
#408450-1

ADDITIONAL NETWORKING CABLES

SERIAL PORT SPLITTER CABLES

Connect an external GPS receiver (AS GRP or AS GPS HS) to a SOLIX unit with pigtail for a NMEA 0183 communication feed if needed. Approximately 32".



AS GPS NMEA
#720080-1

Models	Splitter Cables
SOLIX Series	AS Dual NMEA

HANDHELD GPS CONNECTION KITS

Kit includes: NMEA connection cable, Y-cable and detailed instructions. This connection kit requires the handheld GPS manufacturer's NMEA data cable to complete the connection to your handheld GPS.



AS HHGPS
#700030-1

Models	Splitter Cables
SOLIX Series HELIX 12, 10, 9, 8 Series HELIX 7 G2N/G3N Series	AS Dual NMEA AS HHGPS

TEMPERATURE ADAPTER CABLES

Allows connection of Temperature Sensor (TG W) and Speed Sensor (SW) to your Humminbird fish finder.



PC 12 ST (shown)
#720086-1

Models	Splitter Cables	AS T Y
SOLIX Series HELIX 7 G2N/G3N Series	PC 12 ST AS T Y	#720075-1

AUTOPILOT SERIES ACCESSORIES

Never deviate from your route with the precise control and proven performance of your Humminbird AutoPilot system. Easily navigate the SC 110 User Interface thanks to intuitive keys and menus, and a full-color, sunlight-readable display. This rugged pilot features advanced steering-control technology that holds its course even in high winds. Let it take the helm with total confidence, whatever the sea's conditions.



WIND MODE
Maintain your desired point of sail with continuously updated Apparent and Set Wind angle indication. This results in better steering in all wind and sea conditions. Use graphic close-hauled indication for quick reference.



TRUE COURSE
True Course uses GPS position and course-keeping algorithms to compensate for set and drift influences. The result is the steadiest possible course—automatically.



PRE-PROGRAMMED TURNS
You focus on catching fish—let your AutoPilot do the steering. Choose from pre-programmed turn patterns designed specifically for sportfishing.

AUTOPILOT CONTROL HEAD
Control and monitor your AutoPilot System with this bright, full-color 3.5-inch display. Features a QVGA 320 x 240 screen, saltwater-proof performance and a NMEA 0183 bus.



SC 110
#409100-1

AUTOPILOT SYSTEM
Hold to your course, no matter the seas or winds. The components of your Humminbird AutoPilot system add up to superior course stability and steering performance, as well as reduced fuel use. Your Humminbird representative can help you choose the options and configuration right for you.



SC 110
AUTOPILOT KIT (shown)
#400052-1

SC 110 KIT W/O FB
(rudder feedback not included)
#400053-1

FLUXGATE COMPASS
This reliable electronic compass maintains your course based on magnetic heading reference. Features automatic self-compensation, durable construction and ensures relevant magnetic reference.



FXC 110
#408210-1

AUTOPILOT COURSE COMPUTER
Experience maximum course stability with this high-speed computer optimizing rudder movement. Features 32 bit microprocessor, NMEA 0183 standard interface and integrated rate gyro.



SCP 110
#408180-1

RUDDER FEEDBACK UNIT
This brushless rudder feedback unit features a unique, linear variable transformer—proving decades of reliable performance. Compatible with: SC 110 AP Kit, SC 110 AP Kit w/o FB and SC 110 Display Only.



FB 30
#408150-1

HYDRAULIC PUMP
Humminbird pumps feature rugged construction and flexible configurations for crafts of all dimensions. Multiple flow rates, pressure ratings and oil tank capacities.



HHRP 17-12
#408350-1

HHRP 11-12 (shown)
#408340-1

30 METER CABLE
Stretch the limits of your Humminbird AutoPilot system with this saltwater-proof 30-meter cable.



SCP CABLE 30
#720077-1

AUTOPILOT SYSTEM CONFIGURATION

■ Data ■ DC Power Cable ■ Ethernet ■ RS422 Data Cable

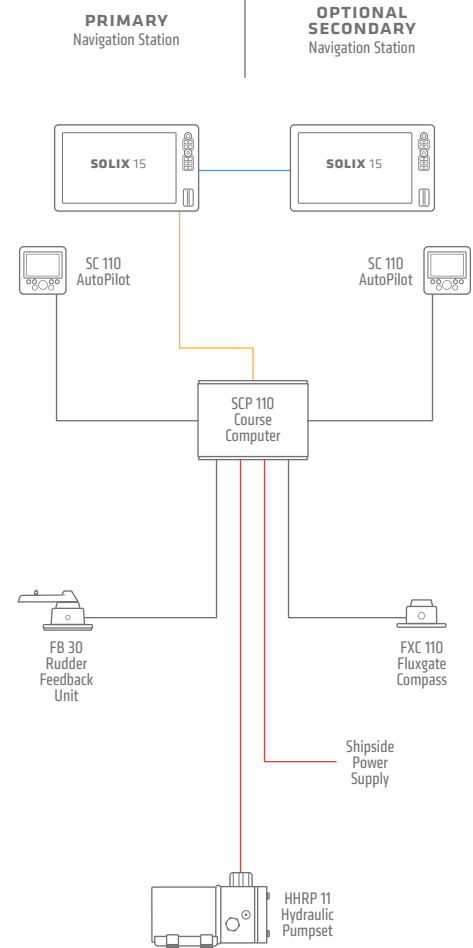


Diagram is not to scale

AIS ACCESSORIES

Battle fish—not other boats. Humminbird's state-of-the-art AIS technology takes the risk and guesswork out of navigating high-traffic channels or low-visibility seas. From your Humminbird display, you'll see key information transmitted by other AIS-equipped vessels in VHF range of your boat. If you choose, other vessels will be able to view the same information about you. See. Be seen. Never be sorry.



UP TO 100 TARGETS
Display and track critical safety and navigation statuses of up to 100 AIS targets at once.

SILENT MODE
See other vessels near you without being seen. By pressing a button, you'll continue to receive AIS messages from all transmitting vessels in your area, but your boat's AIS transmission will be suppressed.

SIMPLE PRESENTATION
Easy-to-decipher graphics and text give you an instant understanding of your surroundings.

IN-DEPTH VESSEL INFORMATION
See name, location, type, length, beam, draft, cargo type, destination and estimated time of arrival of other AIS vessels.

CLASS A AIS TRANSMITTER RECEIVER
Get detailed AIS data and a faster update rate with this professional-grade transceiver. View AIS information directly on the LED backlit LCD display and easily find what you're looking for with the intuitive menu system. Includes external GPS antenna.



AIS 100
#409320-1

VHF ANTENNA SPLITTER
Avoid the cost and hassle of a second antenna. Install this splitter to share a single VHF antenna with your VHF radio and Humminbird Class B Transceiver. FM output allows you to also connect an FM broadcast receiver.



ASP-1
#409280-1

PC SOFTWARE

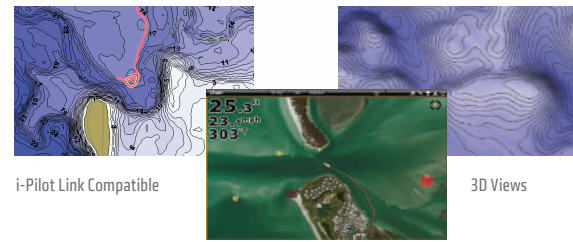
HUMMINBIRD AUTOCHART

Leave no waters uncharted. New AutoChart Zero Line SD cards give you access to the zero lines for ten million bodies of water—the starting point for creating accurate, detailed maps of any fishing spot. AutoChart's proprietary software uses your Humminbird's sonar returns and GPS to automatically build your charts. No subscriptions or hidden fees. No need to submit your data and wait weeks for a finished chart. AutoChart does it in just three simple steps—and your data is kept private, so your competition is none the wiser.

STEP 1 Record survey data with your Humminbird. 

STEP 2 Convert data on a PC with the AutoChart software. 

STEP 3 Export map to a Zero Line SD card for use in your Humminbird. 



i-Pilot Link Compatible

3D Views

Aerial Photography Overlay

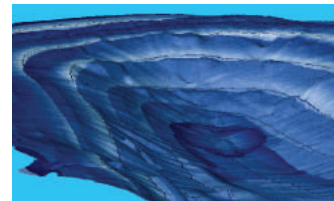
AUTOCHART
#600031-1

AutoChart software includes Zero Line SD card and PC-compatible disc. Internet access required to activate software.

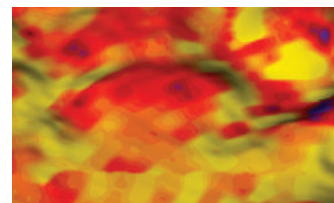


HUMMINBIRD AUTOCHART PRO

Add another layer of detail to your AutoChart mapping. AutoChart PRO offers all the leading features of AutoChart, but with two key enhancements designed to give tournament anglers a competitive edge. Bottom Hardness Indication delivers a crucial tip-off to where fish are hiding, while Side Imaging Mosaic allows you to overlay your Side Imaging returns onto your AutoChart map for a 3D visualization of fish-holding habitat. With AutoChart PRO, you'll have all the tools you need to bring your next trophy into sight.



Side Imaging Mosaic



Bottom Hardness Indication

AUTOCHART PRO
#600032-1

AutoChart PRO software includes Zero Line SD card and PC-compatible disc. Internet access required to activate software.



AS EC CHART

Link your fishing system to your laptop. One end connects to your boat's Ethernet network, the opposite connects to your PC's Ethernet port. This is for use with AutoChart PC.

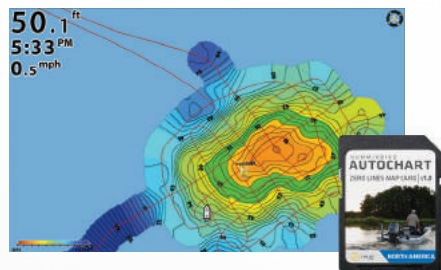


AS EC CHART
#760032-1

- Models**
- HELIX 12, 10, 9, 8 Series
 - HELIX 8 G3N Series
 - HELIX 7 G2N/G3N Series

AUTOCHART ZERO LINE SD CARD

For easy storage and sharing of your AutoChart and AutoChart Live data, opt for the AutoChart Zero Line SD Card. Store years of large, detailed maps on this 32GB card, with the flexibility to take your charts wherever you go. Use your maps on any Humminbird fish finder with AutoChart Live technology built in, or transfer them to your PC for file backup or optional sharing on AutoChart LiveShare.



AUTOCHART ZERO LINE SD CARD
#600033-1

MOUNTING HARDWARE / COVERS / CASES



SERIES	UNIT MOUNTS	MOUNTING KNOBS	IN-DASH MOUNTING KITS	UNIT COVERS	CARRYING CASES	PORTABLE CASE CONVERSION KIT
SOLIX 15 Series	GM S15	—	IDMK S15R	UC S15	—	—
SOLIX 12 Series	GM S12	—	IDMK S12R	UC S12	—	—
SOLIX 10 Series	GM S10	—	IDMK S10R	UC S10	—	—
ONIX 10	GM 10	—	IDMK ONIX10	UC 10	—	—
ONIX 8	GM 8	—	IDMK ONIX8	UC 8	—	—
HELIX 12 Series	GM H12	—	IDMK H12R	UC H12	—	—
HELIX 10 Series	GM H910	—	IDMK H910R	UC H910	—	—
HELIX 10 G2N/G3N Series	GM H910	—	IDMK H910R	UC H910	—	ICE PTC CHIRP H8910
HELIX 9 G1/G2N Series	GM H910	—	IDMK H910R	UC H910	—	ICE PTC CHIRP H8910 (G2N only)
HELIX 9 G3 Series	GM H910	—	IDMK H89R	UC H89	—	ICE PTC CHIRP H8910
HELIX 8 Series	GM H910	—	IDMK H89R	UC H89	—	ICE PTC CHIRP H8910
HELIX 7 G1 Series	GM H7	—	IDMK H7R	UC H7 or UC H7PR	—	ICE PTC XI 9 20 H57, PTC U2 or PTC UNB2
HELIX 7 G2/G3/G2N/G3N Series	GM H7	—	IDMK H7R	UC H7 or UC H7PR	—	ICE PTC CHIRP H57 FB, PTC U2 or PTC UNB2
HELIX 5 G1 Series	GM H5	—	IDMK H5	UC H5	—	ICE PTC XI 9 20 H57, PTC U2 or PTC UNB2
HELIX 5 G2 Series	GM H5	—	IDMK H5	UC H5	—	ICE PTC CHIRP H57 FB, PTC U2 or PTC UNB2
ICE 35, 45, 55	—	MKH 2	—	—	CC ICE	—
ICE HELIX 5 G2	GM H5	—	IDMK H5	UC H5	—	ICE PTC CHIRP H57 FB, PTC U2 or PTC UNB2
ICE HELIX 7 G2/G3	GM H7	—	IDMK H7R	UC H7 or UC H7PR	—	ICE PTC CHIRP H57 FB, PTC U2 or PTC UNB2
PiranhaMAX 4, PiranhaMAX 4 DI	MS PM2 + MS P2	540220-1	IDMK PM4	UC PM4	—	—

LET THE BIRD SOAR.

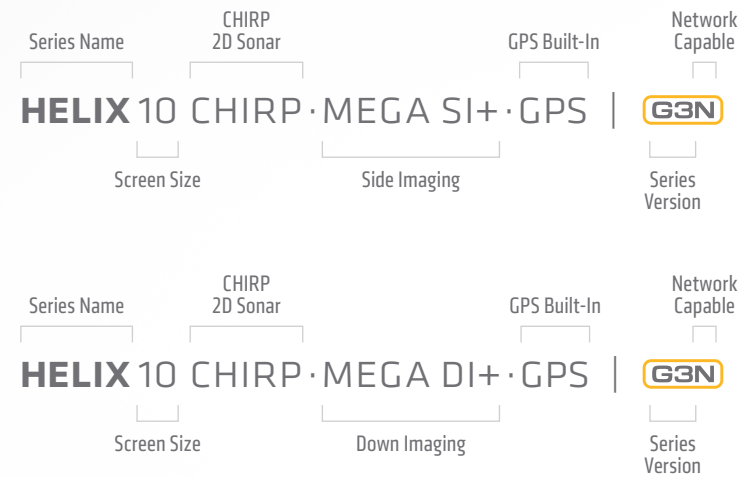
When it's time to thread the needle, you'll find the perfect threads here. From men's to women's, T-shirts to hoodies, and cotton to polyester, we've got you covered with fishing apparel that will help you stay cool and comfortable under pressure. Find your fit, then hit the water in style:



FREQUENTLY ASKED QUESTIONS

HOW DO I TELL WHAT TECHNOLOGIES ARE INCLUDED WITH MY HUMMINBIRD UNIT?

The product name is your first clue to what technologies your Humminbird offers. Use the key below for help interpreting:



G2 SOLIX Models do not have the “N” indicator but all models support networking.

The level of sonar listed in the model name indicates the highest level of sonar included, and all additional levels of sonar before it are also included.

MEGA SI models include:
MEGA Side Imaging, MEGA Down Imaging and Dual Spectrum CHIRP (2D sonar)

MEGA DI models include:
MEGA Down Imaging and Dual Spectrum CHIRP (2D sonar)

CHIRP models include:
Dual Spectrum CHIRP (2D sonar)

WHY AND HOW SHOULD I UPGRADE MY HUMMINBIRD SOFTWARE?

In order to keep your fish finder running at peak performance and bring you newly available features, Humminbird offers free software updates. Current Humminbird units have updates available a few times a year. We highly encourage you to take advantage of this great opportunity to get new features on your Humminbird unit.

WHAT IS THE FISHSMART APP AND WHY SHOULD I INSTALL IT ON MY MOBILE DEVICE?

The free Humminbird FishSmart App is an iOS and Android app enabling you to download the latest software updates and send them directly to your Humminbird fish finder with Bluetooth. Additionally, this app allows you to purchase, download and view Humminbird’s library of LakeMaster high-definition maps right from your smartphone or tablet, with the option to share them to a Bluetooth-equipped Humminbird fish finder. See page 20 for more info on the FishSmart App.

IF MY CURRENT HUMMINBIRD FISH FINDER DOES NOT HAVE (MEGA) SIDE IMAGING OR (MEGA) DOWN IMAGING, CAN I BUY A NEW TRANSDUCER TO UPGRADE MY SONAR?

New sonar technologies can only be provided by specific combinations of hardware, software and transducers. Because of this, changing only the transducer will not provide the hardware or software necessary for the fish finder to provide an upgraded sonar technology.

WHAT DO I NEED TO GET DEPTH READINGS AT HIGH SPEED ON MY HELIX G3/G3N OR SOLIX G2 FISH FINDER, EQUIPPED WITH DOWN IMAGING OR SIDE IMAGING, WHEN INSTALLING AT THE CONSOLE/HELM OR TILLER OF MY BOAT?

We suggest the following accessories for peak performance and best depth readings at high speeds, installed in combination with the Down Imaging or Side Imaging transducer supplied with your Humminbird fish finder:

HELIX G3/G3N	SOLIX G2
Aluminum Boats: (1) 9 M SIDB Y and (1) XNT 9 HW T	Aluminum Boats: (1) 14 M SIDB Y and (1) XNT 14 HW T
Fiberglass Boats: (1) 9 M SIDB Y and (1) XP 9 HW	Fiberglass Boats: (1) 14 M SIDB Y and (1) XP 14 HW



ETHERNET NETWORKING

WHAT DOES “ETHERNET NETWORKING” MEAN AND WHICH HUMMINBIRD MODELS HAVE IT?

Ethernet networking refers to the ability of a networking-capable Humminbird fish finder, such as HELIX G3N or SOLIX G2 models, to share information like waypoints, tracks and transducer information, as well as connect to Ethernet accessories like Minn Kota trolling motors with i-Pilot Link or Humminbird CHIRP radar. Current networking-capable models include HELIX 7, 8, 9, 10 and 12 G3N models and all SOLIX G2 models.

WHY SHOULD I CREATE AN ETHERNET NETWORK ON MY BOAT?

Ethernet networking will allow a Humminbird fish finder to share data with other networking-capable Humminbird fish finders, Minn Kota i-Pilot Link trolling motors and information from certain Humminbird accessories. Creating an Ethernet network will share information between Humminbird fish finders, Minn Kota trolling motors and Ethernet accessories, unlocking exclusive features and will create a more efficient, convenient and enjoyable fishing experience.

WHAT’S THE BEST WAY TO CREATE A NETWORK ALLOWING FOR THE MOST FUNCTIONALITY?

When networking Humminbird fish finders, it is recommended to network fish finders of the same series type (HELIX to HELIX or SOLIX to SOLIX), as these network configurations provide the greatest amount of functionality and benefits to an angler or captain.

WHAT DATA IS SHARED BETWEEN NETWORKING-CAPABLE HUMMINBIRD UNITS?

ALL ONE SERIES	COMBINED SERIES
For networks with all HELIX fish finders or a network with all SOLIX fish finders, these units will share:	When networks include both HELIX and SOLIX, these models are able to share the following information between HELIX and SOLIX models:
Waypoints	Waypoints
Transducer information*	–
MEGA 360 Imaging views	–
GPS Signal	–
Minn Kota i-Pilot Link info and control	Minn Kota i-Pilot Link info and control
Minn Kota Talon Bluetooth control	–
Humminbird CHIRP radar	Humminbird CHIRP radar
NMEA 2000 network information	NMEA 2000 network information
Map card information (SOLIX-to-SOLIX networks only)	–

* Some sonar sharing depends on software compatibility and models networked

WHAT DO I NEED IN ORDER TO NETWORK COMPATIBLE HUMMINBIRD MODELS?

For networking (1) Humminbird unit to another Humminbird unit, you will need the following:

UNITS	ETHERNET CABLE REQUIRED	ETHERNET ADAPTER REQUIRED
HELIX to HELIX	(1) Ethernet cable of appropriate length to span the distance between fish finders. These are available in lengths from 5 to 30 feet to match any rigging need.	(2) AS EC QDE (#720074-1) Ethernet adapter will be needed for connecting the Ethernet cable to the HELIX fish finder.
HELIX to SOLIX	Ethernet cable of appropriate length to span the distance between fish finders. These are available in lengths from 5 to 30 feet to match any rigging need.	(1) AS EC QDE (#720074-1) Ethernet adapter will be needed for connecting the Ethernet cable to the HELIX fish finder. The Ethernet cable will connect directly into the SOLIX unit.
SOLIX to SOLIX	Ethernet cable of appropriate length to span the distance between fish finders. This cable will connect directly into both SOLIX units and requires no adapter.	–

For networking (1) Humminbird unit to multiple Humminbird units, you will need the following:

ETHERNET SWITCH REQUIRED	ETHERNET CABLE REQUIRED	ETHERNET ADAPTER REQUIRED
(1) AS ETH 5 PGX, 5-port Ethernet switch	(1 ea) Ethernet cable of appropriate length for each fish finder on the network, reaching from the Ethernet switch to the fish finder.	(1 ea) AS EC QDE (#720074-1) for every HELIX unit connected to the network. SOLIX units connect directly to Ethernet cables and do not require an adapter.

Additionally, we offer prepackaged kits that include everything you need to network two HELIX networking-capable fish finders:

DUAL HELIX STARTER KIT HWFG #700061-1	DUAL HELIX STARTER KIT HWAL #700060-1
Includes everything you need to network (2) HELIX fish finders on your fiberglass boat. Also includes high-speed transducer, y-cable and HELIX adapter for built-in MEGA Imaging on Minn Kota trolling motors.	Includes everything you need to network (2) HELIX fish finders on your aluminum boat. Also includes high-speed transducer, y-cable and HELIX adapter for built-in MEGA Imaging on Minn Kota trolling motors.

BOAT RIGGING GUIDE

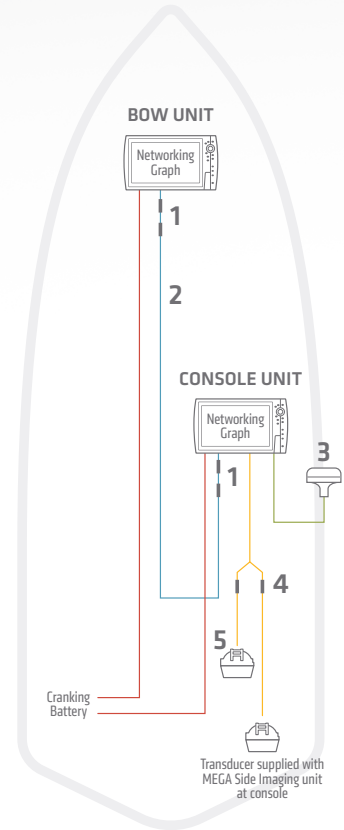
Here are some examples for configuring your One-Boat Network.

FRESHWATER INSTALLATION 1

(1) Console Humminbird unit, (1) Bow Mount Humminbird unit, GPS/heading sensor, and High Speed Transducer

HELIX SERIES	SOLIX SERIES
1 Ethernet Adapter Cable (Need 2) AS EC QDE #720074-1	Ethernet Adapter Cable Not Required
2 Ethernet Cable AS EC 5E (5') #720073-6 AS EC 10E (10') #720073-2 AS EC 15E (15') #720073-5 AS EC 20E (20') #720073-3 AS EC 30E (30') #720073-4	Ethernet Cable AS EC 5E (5') #720073-6 AS EC 10E (10') #720073-2 aAS EC 15E (15') #720073-5 AS EC 20E (20') #720073-3 AS EC 30E (30') #720073-4
3 GPS + Heading Sensor AS GPS HS #408400-1	GPS + Heading Sensor AS GPS HS #408400-1 AS GPS NMEA #720080-1
4 Transducer Splitter Cable 9 M SIDB Y #720101-1	Transducer Splitter Cable 14 M SIDB Y #720103-1
5 High Speed Transducer (fiberglass hull) XP 9 HW T #710276-1 High Speed Transducer (aluminum hull) XNT 9 HW T #710274-1	High Speed Transducer (fiberglass hull) XP 14 HW T #710287-1 High Speed Transducer (aluminum hull) XNT 14 HW T #710285-1

The accessories and part numbers listed above are valid as of December 2019. Installations shown are for networking HELIX Series or SOLIX Series models.



■ NMEA 0183 ■ Ethernet ■ 12V DC Power ■ Transducer Cable ■ Bluetooth® Signal

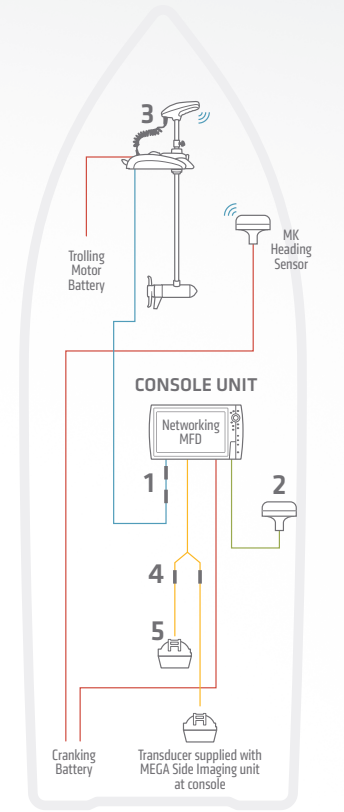
SALTWATER INSTALLATION 1

Minn Kota Riptide Trolling Motor with i-Pilot Link, and (1) Console Mount Humminbird unit, and optional GPS/heading sensor

HELIX SERIES	SOLIX SERIES
1 Ethernet Adapter Cable AS EC QDE #720074-1	Ethernet Adapter Cable N/A
2 GPS + Heading Sensor AS GPS HS #408400-1	GPS + Heading Sensor AS GPS HS #408400-1 AS GPS NMEA #720080-1
3 Minn Kota Trolling Motor with i-Pilot Link	Minn Kota Trolling Motor with i-Pilot Link
4 Transducer Splitter Cable 9 M SIDB Y #720101-1	Transducer Splitter Cable 14 M SIDB Y #720103-1
5 High Speed Transducer (fiberglass hull) XP 9 HW T #710276-1 High Speed Transducer (aluminum hull) XNT 9 HW T #710274-1	High Speed Transducer (fiberglass hull) XP 14 HW T #710287-1 High Speed Transducer (aluminum hull) XNT 14 HW T #710285-1

*One (1) AS EC 30E 30' ethernet cable included with trolling motor.

The accessories and part numbers listed above are valid as of December 2019. Installations shown are for networking HELIX Series or SOLIX Series models, and Minn Kota trolling motors with i-Pilot Link.



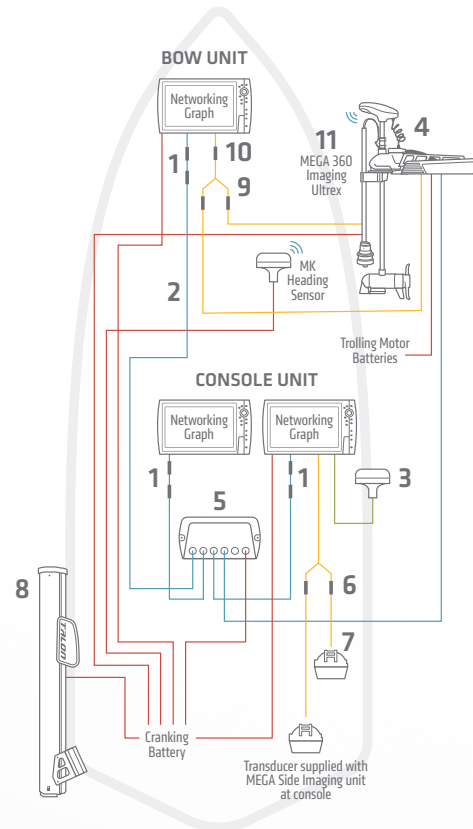
FRESHWATER INSTALLATION 2

Minn Kota Ultrex Trolling Motor with i-Pilot Link and built-in MEGA Imaging, (1) Bow-Mounted Humminbird unit, MEGA 360 Imaging - Ultrex, (2) Console-Mounted Humminbird units, and Talon Shallow Water Anchor

HELIX SERIES	SOLIX SERIES
1 Ethernet Adapter Cable (Need 2) AS EC QDE #720074-1	Ethernet Adapter Cable N/A
2 Ethernet Cable (Need 3) AS EC 5E (5') #720073-6 AS EC 10E (10') #720073-2 AS EC 15E (15') #720073-5 AS EC 20E (20') #720073-3 AS EC 30E (30') #720073-4	Ethernet Cable (Need 3) AS EC 5E (5') #720073-6 AS EC 10E (10') #720073-2 aAS EC 15E (15') #720073-5 AS EC 20E (20') #720073-3 AS EC 30E (30') #720073-4
3 GPS + Heading Sensor AS GPS HS #408400-1	GPS + Heading Sensor AS GPS HS #408400-1 AS GPS NMEA #720080-1
4 Minn Kota Ultrex Trolling Motor with i-Pilot Link and Built-in MEGA Imaging	Minn Kota Ultrex Trolling Motor with i-Pilot Link and Built-in MEGA Imaging
5 5-Port Ethernet Switch AS ETH 5PXG #408450-1	5-Port Ethernet Switch AS ETH 5PXG #408450-1
6 Transducer Splitter Cable 9 M SIDB Y #720101-1	Transducer Splitter Cable 14 M SIDB Y #720103-1
7 High Speed Transducer (fiberglass hull) XP 9 HW T #710276-1 High Speed Transducer (aluminum hull) XNT 9 HW T #710274-1	High Speed Transducer (fiberglass hull) XP 14 HW T #710287-1 High Speed Transducer (aluminum hull) XNT 14 HW T #710285-1
8 Talon Shallow Water Anchor 12' Talon SWA	Talon Shallow Water Anchor 12' Talon SWA
9 MEGA 360 and MDI/2D Y-Cable 14 M360 2DDI Y #720108-1	MEGA 360 and MDI/2D Y-Cable 14 M360 2DDI Y #720108-1
10 Adapter Cable for Built-in MEGA Imaging MKR-MI-1 HB (HELIX 8-12 G2N/G3N) #1852088 MKR-MDI-2 HB (HELIX 7 G3/G3N) #1852086	Adapter Cable for Built-in MEGA Imaging N/A
11 MEGA 360 Imaging MEGA 360 Imaging - Ultrex #411250-1	MEGA 360 Imaging MEGA 360 Imaging - Ultrex #411250-1

*One (1) AS EC 30E 30' ethernet cable included with trolling motor.

The accessories and part numbers listed above are valid as of December 2019. Installations shown are for networking HELIX Series or SOLIX Series models, and Minn Kota trolling motors with i-Pilot Link.



SALTWATER INSTALLATION 2

Minn Kota Riptide Trolling Motor with i-Pilot Link, and (2) Console Mount Humminbird units, GPS/heading sensor, and High Speed Transducer

HELIX SERIES	SOLIX SERIES
1 Ethernet Adapter Cable (Need 2) AS EC QDE #720074-1	Ethernet Adapter Cable N/A
2 Ethernet Cable (Need 2) AS EC 5E (5') #720073-6 AS EC 10E (10') #720073-2 AS EC 15E (15') #720073-5 AS EC 20E (20') #720073-3 AS EC 30E (30') #720073-4 AS ECX 30E (30') #760025-1	Ethernet Cable (Need 2) AS EC 5E (5') #720073-6 AS EC 10E (10') #720073-2 AS EC 15E (15') #720073-5 AS EC 20E (20') #720073-3 AS EC 30E (30') #720073-4 AS ECX 30E (30') #760025-1
3 GPS + Heading Sensor AS GPS HS #408400-1	GPS + Heading Sensor AS GPS HS #408400-1 AS GPS NMEA #720080-1
4 Minn Kota Trolling Motor with i-Pilot Link	Minn Kota Trolling Motor with i-Pilot Link
5 5-Port Ethernet Switch AS ETH 5PXG #408450-1	5-Port Ethernet Switch AS ETH 5PXG #408450-1
6 High Speed Transducer (fiberglass hull) XP 9 HW T #710276-1 High Speed Transducer (aluminum hull) XNT 9 HW T #710274-1	High Speed Transducer (fiberglass hull) XP 14 HW T #710287-1 High Speed Transducer (aluminum hull) XNT 14 HW T #710285-1
7 Transducer Splitter Cable 9 M SIDB Y #720101-1	Transducer Splitter Cable 14 M SIDB Y #720103-1
8 Talon Shallow Water Anchor 12' Talon SWA	Talon Shallow Water Anchor 12' Talon SWA

*One (1) AS EC 30E 30' ethernet cable included with trolling motor.

The accessories and part numbers listed above are valid as of December 2019. Installations shown are for networking HELIX Series or SOLIX Series models, and Minn Kota trolling motors with i-Pilot Link.

