

## QUICK START GUIDE

### Power On/Off

**Power On/Off:** Press and hold the POWER key.

**Power Off:** During operation, tap the top, right corner of the status bar and select Power Off.



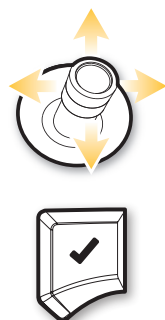
### First Time Setup

When you power on the control head for the first time, use the Setup Guide to configure the unit. These settings can be adjusted from the Home screen later.

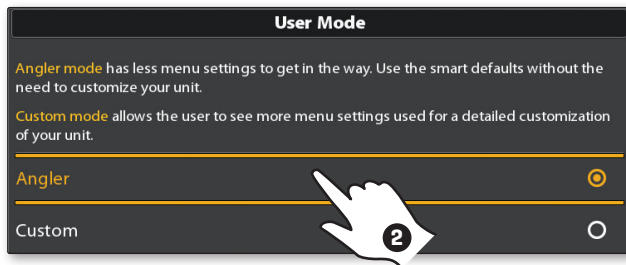
1. Tap to select **Begin Manual Setup**.




Or use the Joystick and CHECK key to select.



2. Select **Angler mode** [basic settings and menu functions for easy operation] or **Custom mode** [all settings and menu functions for complete customization]. Follow the on-screen prompts to configure the unit.



 **NOTE:** For additional information, download the SOLIX Operations Manual from our Web site

 **NOTE:** See the **Key Functions** page at the back of this guide for more helpful tips.

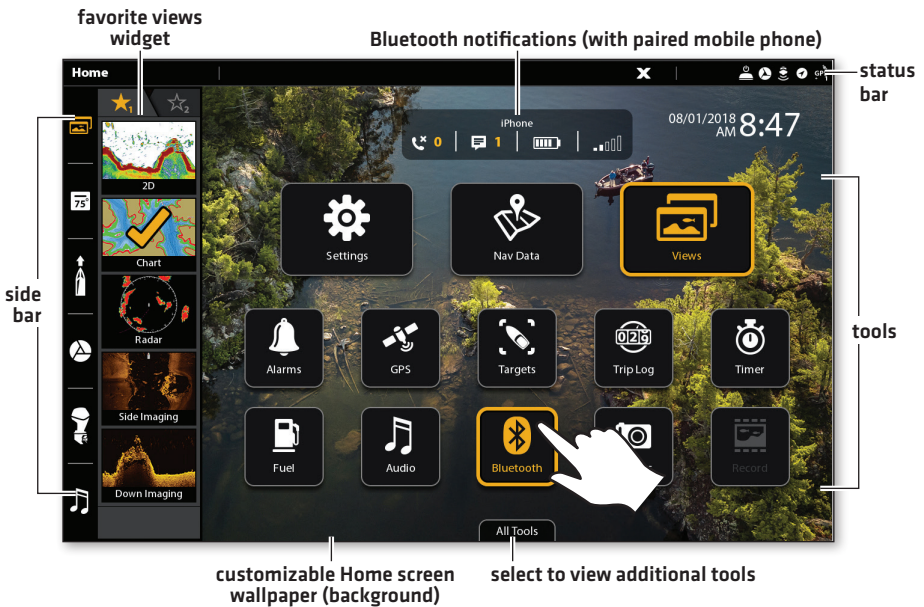
# The Home Screen

The Home screen is the main control center for your control head. Use the Home screen to access control head settings, navigation data, views, alarms, and other tools.



Press the HOME key to open the Home screen from any view.

- Tools, views, and widgets available on the Home screen are determined by the equipment attached to the control head network.
- Pair your **Bluetooth®**-capable control head and mobile phone to receive text message and phone call alerts on your Home screen.
- The Home screen wallpaper can be customized using the Images tool.



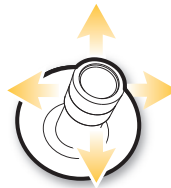
## ▶ Select a Tool, Widget, View, or Main Menu

Use the touch screen, Joystick, or the ENTER key to make selections.

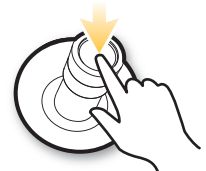


Tap to Select

OR



Select



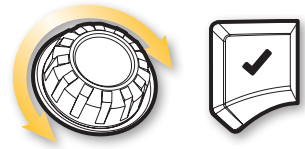
Open

## Adjust a Menu Setting

Drag the slider, or press and hold the slider.

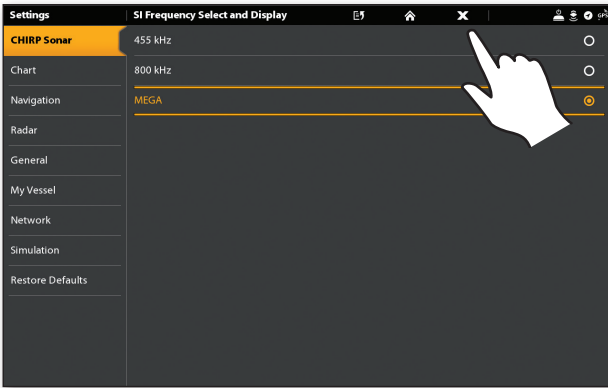


Turn the Rotary dial, or press and hold the ENTER key.



## Close a Menu

- Tap the Back icon to go back one level.
- Tap the X icon to close a menu.

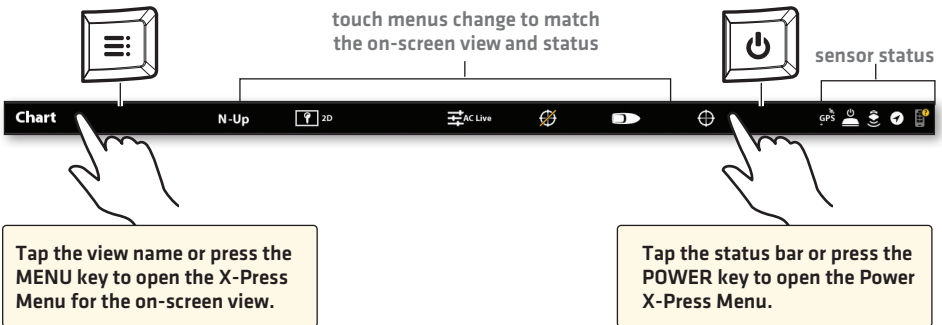


Press the EXIT key to close a menu or go back one level. Press and hold the EXIT key to close all menus.



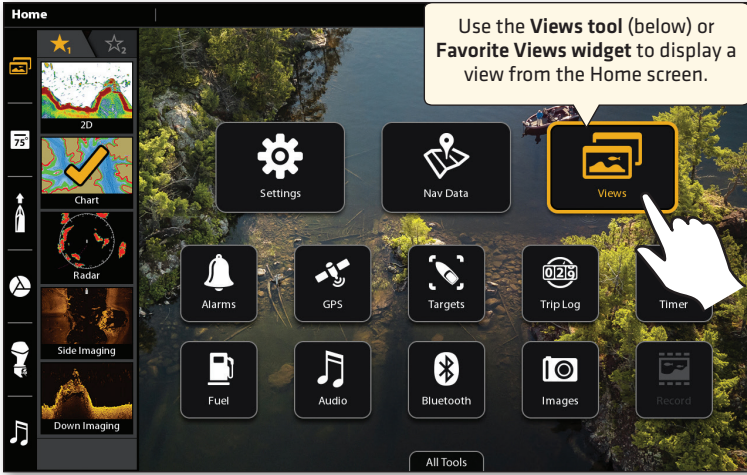
## Tips for Using the Status Bar

The status bar is located at the top of the screen.



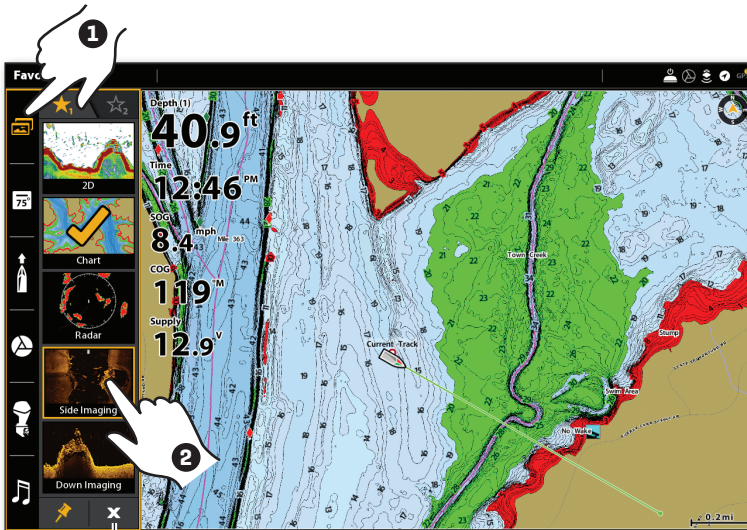
## Display a View from the Views Tool

Use the touch screen or the Joystick to open a view from the Views tool.



## Display a View from the Favorite Views Widget

1. Tap the Favorite Views widget in the side bar, or press the Rotary dial.
2. Tap a view, or turn the Rotary dial and press the ENTER key.

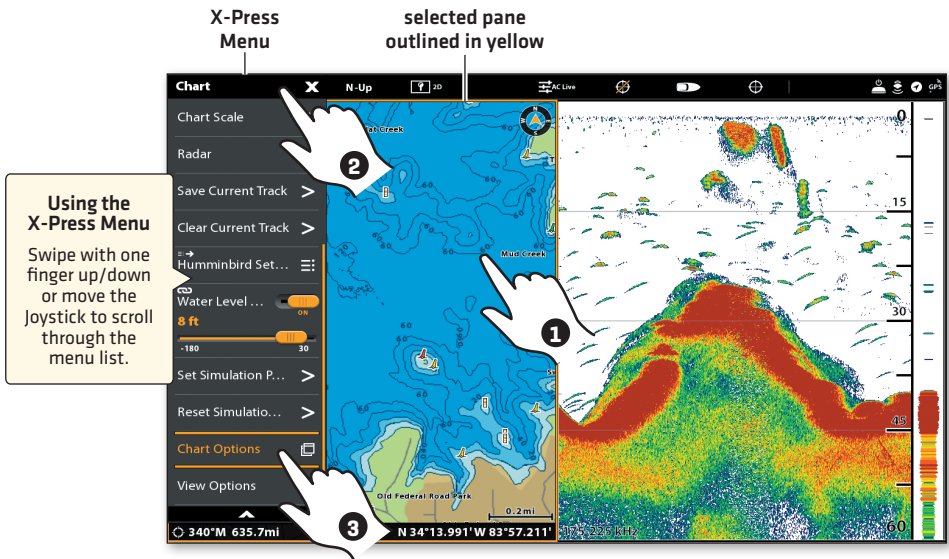


tap to close the Favorite Views widget

## Edit the On-Screen View (X-Press Menu)

The X-Press Menu displays menu options for the on-screen view, the selected pane, and the operation mode.

1. **Single-Pane View:** Tap the view name in the status bar, or press the MENU key.  
**Multi-Pane View:** Tap a pane, or press the PANE key to select a pane. Press the MENU key.
2. Select **[Pane Name] Options > Preferences** to change the appearance of the view.  
Select **[Pane Name] Options > Overlays** to display or hide information on the view.  
Select **View Options > Data Overlays** to display data readouts on the view.



Tap to Select a Pane  
and the Menu

OR



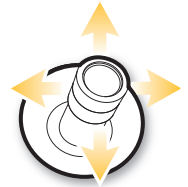
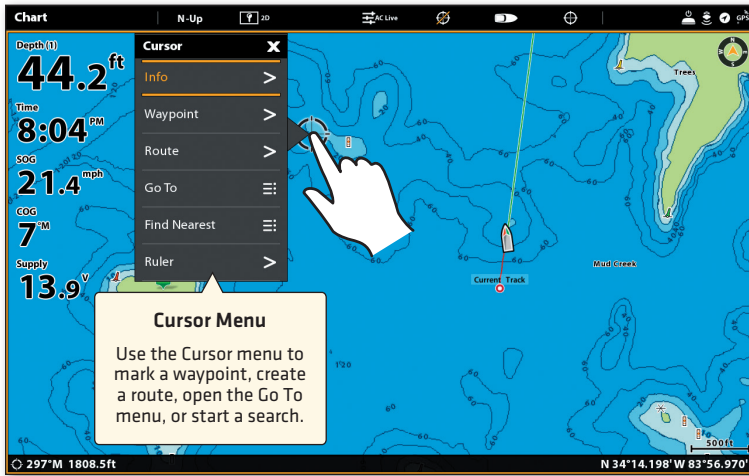
Press the PANE key  
to Select a Pane



Press the MENU key

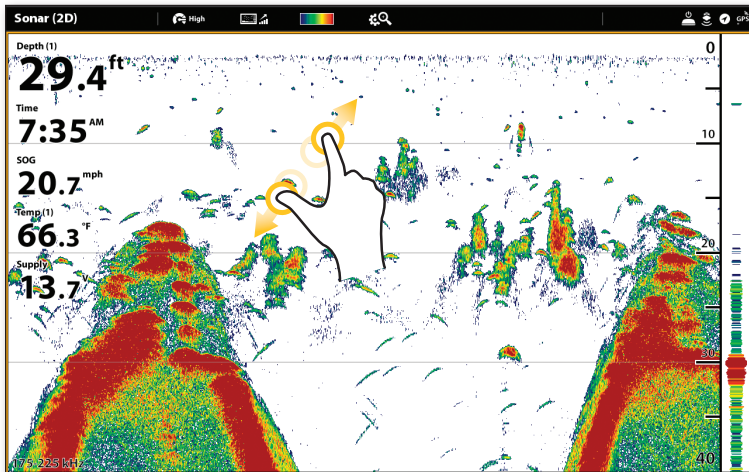
## Activate the Cursor

Tap a position on the view, or move the Joystick.  
To open the Cursor menu, press and hold a position.



## Zoom In/Zoom Out

Pinch out to zoom in, pinch in to zoom out, or press the +/- ZOOM keys.



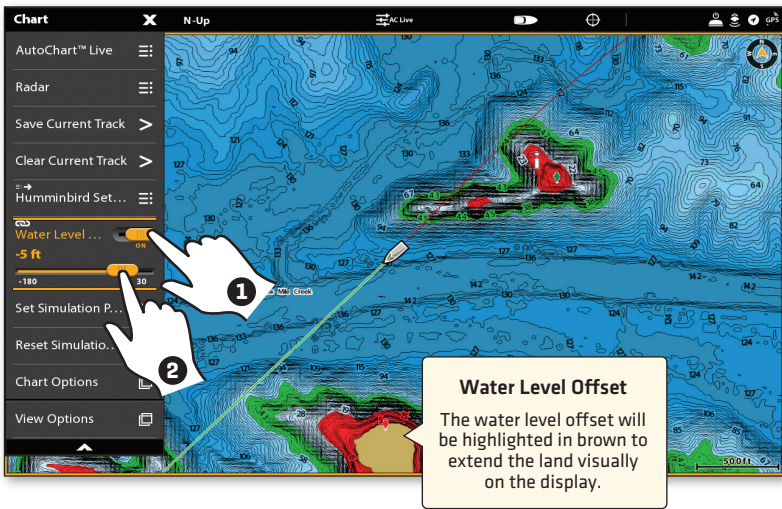
## Set Up Humminbird® Charts: Set the Water Level Offset

When you start your trip for the day using a Humminbird CoastMaster™ or LakeMaster® chart card, it is important to note if the water level is higher or lower than usual. For example, if the digital depth on your control head is showing 3 feet less than the related depth contour for your location, set Water Level Offset to -3 feet.

1. With a Chart View displayed on-screen, tap Chart in the status bar, or press the MENU key once.
2. Select Water Level Offset.
3. Tap the on/off button, or press the ENTER key, to turn it on.
4. Press and hold the slider, or turn the Rotary dial, to adjust the setting.



**NOTE:** A Humminbird CoastMaster or LakeMaster chart card must be installed and selected as the chart source to enable this feature.



Tap to select a menu.  
Press and drag the slider to  
adjust the menu setting.

OR



Press the MENU key



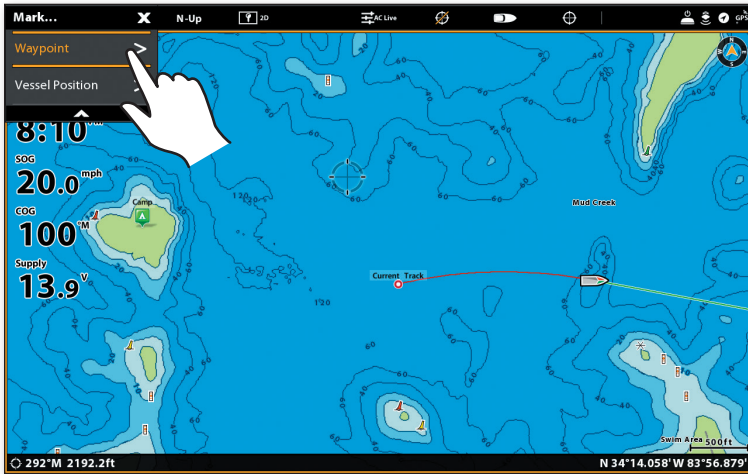
Turn the Rotary dial to  
adjust the menu setting.

**NOTE:** To apply depth colors, depth highlight range, etc., go to the Chart X-Press Menu > Humminbird Settings. See your operations manual for details.

## Mark Waypoints

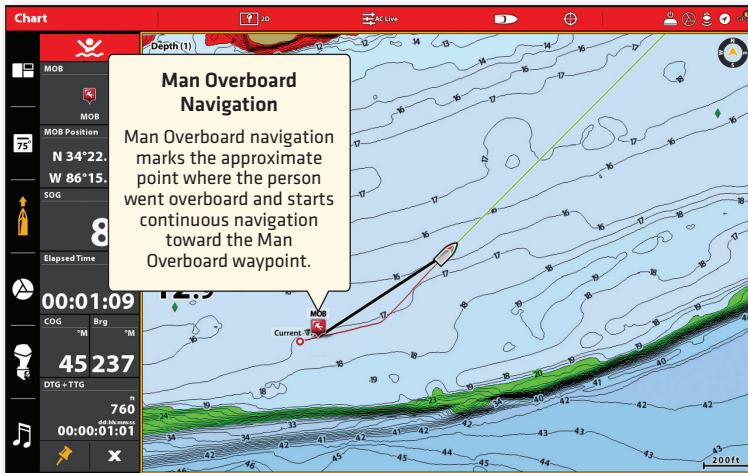
Open the Mark Menu and select Waypoint, or press the MARK key **twice**.

If the cursor is not active, the waypoint will be marked at the boat position. If the cursor is active, the waypoint will be marked at the cursor position.



## Activate Man Overboard (MOB) Navigation

As soon as you know you have a man overboard, **press and hold the MARK/MAN OVERBOARD key**. See your operations manual for details.



**NOTE:** To end navigation, press the GO TO key and select Cancel Navigation.



## Start Quick Route Navigation (touch screen)

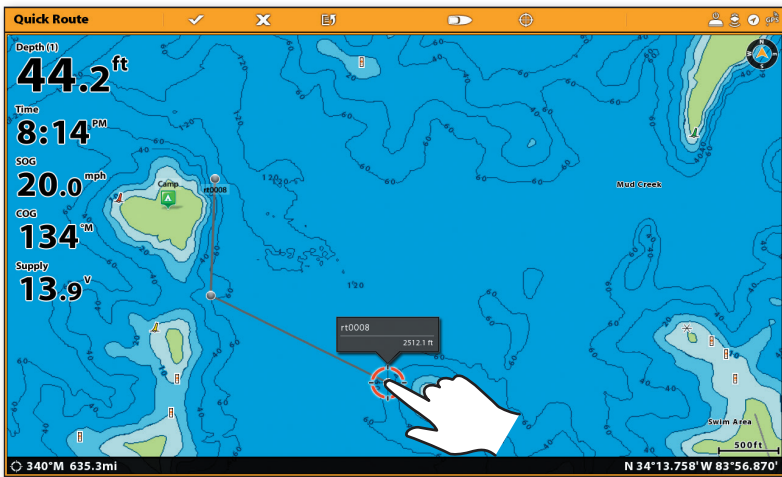
1. **Open the Cursor Menu:** Press and hold a position on the chart.
2. Select Go To.
3. Select Quick Route.
4. Tap the chart in the positions where you want to mark a route point.

**Undo Last Route Point:** Tap the Back icon.

**Cancel Route Creation:** Tap the X icon.

5. To start navigation, tap the check icon in the status bar.

**Cancel Navigation:** Tap Chart in the status bar. Select Go To > Cancel Navigation.



**Tap to Mark  
Route Points**

## Start Quick Route Navigation (keypad)

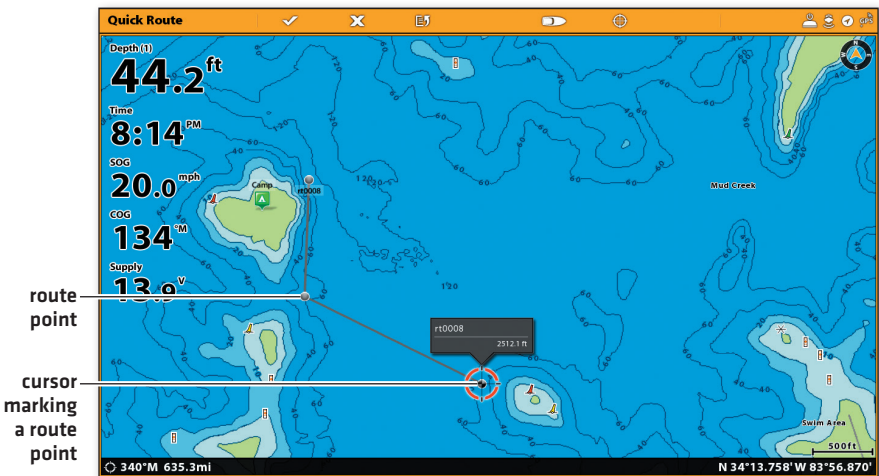
1. Press the GO TO key.
2. Select Quick Route.
3. Use the Joystick to move the cursor to a position or waypoint. Press the Joystick to mark the first route point.
4. Repeat step 3 to connect more than one route point.

**Undo Last Route Point:** Press the EXIT key once.

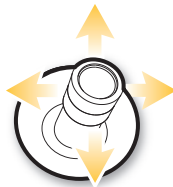
**Cancel Route Creation:** Press and hold the EXIT key.

5. To start navigation, press the ENTER key.

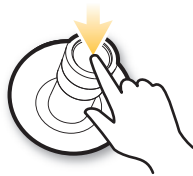
**Cancel Navigation:** Press the GO TO key. Select Cancel Navigation.



Open Go To Menu



Move Cursor Position



Mark Route Points



Start Navigation

## Pair a Phone with the Control Head

Use the following instructions to pair a mobile phone to the control head using **Bluetooth** wireless technology. (Available with **Bluetooth** supported Humminbird products and mobile devices only. Wifi or data connection required.)

### Enable Bluetooth on the Phone

1. Open the Settings menu on your phone.
2. Select Bluetooth.
3. Select On.

### Pair the Phone with the Control Head

1. Press the HOME key.
2. Select the **Bluetooth** tool.
3. Under Phone Bluetooth, select Settings.
4. Select Connect Phone.
5. Follow the on-screen prompts to complete the pairing process.
6. Check your phone. When prompted, tap Pair on your phone.
7. Press Confirm on your control head.

Upon successful pairing, the control head will be listed as connected under the phone's Bluetooth menu.

### Change the Phone Bluetooth Notification Settings on the Control Head

1. Under the Phone Bluetooth menu, select Settings.
2. Select Text Message Alerts or Phone Call Alerts.  
Tap to select an alert format. To turn off notifications, select off.
3. **Turn Sounds On/Off:** Select Sounds. Select on or off.

### Change the Phone Bluetooth Notification Settings on the Phone

1. **Apple iOS:** Open the phone's Bluetooth menu, and select the control head under My Devices.  
**Google Android:** Open the phone's Bluetooth menu, and next to the control head's name under Paired Devices, select Settings.
2. **Apple iOS:** Turn on Show Notifications.  
**Google Android:** Turn on Message Access.

## Managing your Humminbird Unit

### ▶ Register your Humminbird

Register your product[s] and sign up to receive the latest Humminbird news, including software updates and new product announcements.

1. Go to our Web and click Support > Register Your Product. Follow the on-screen instructions to register your Humminbird product.

### ▶ Download the Operations Manual

1. Go to our Web site and click Support > Manuals.
2. Under SOLIX Series, select SOLIX Series Product Manual.












### ▶ Update Software

It is important to keep your control head and accessory software up to date. You can update software using an SD or microSD card (depending on your SOLIX model) or by using **Bluetooth** wireless technology and our FishSmart™ App. See your operations manual for complete details about updating software.

- **Before you install software updates**, export your menu settings, radar settings, and navigation data from your control head to an SD or microSD card. Copy your internal screen snapshots to an SD or microSD card.
- **To check your current software version**, press the HOME key and select Settings > Network > System Info.
- **To update software with an SD or microSD card**, you will need a formatted SD card or microSD card with an adapter. Select the software update for your control head model and follow the on-screen instructions to save the software file to the card. Then, power on the control head and install the SD card in the card slot. Follow the on-screen prompts to confirm the software update.
- **To update software with FishSmart**, Learn > FishSmart App. Use the FishSmart App to download and push software updates directly to your Humminbird control head or accessory. [Available with **Bluetooth** supported Humminbird products and mobile devices only. Wifi or data connection required.]



**NOTE:** Your control head must already be running software release 3.110 or higher to support this feature.

Key	Key Functions
	<p>Press the <b>POWER key</b> to power on the control head. During operation, press the power key to open the Power X-Press Menu. Press and hold the power key to power off the control head.</p>
	<p>Press the <b>ENTER key</b> to start a command or turn on a setting. The ENTER key also opens the Info menu and the Cursor menu.</p>
	<p>Press the <b>EXIT key</b> once to close a menu, close a dialog box, turn off an alarm, or exit Cursor mode. Press and hold the EXIT key to close all menus at once.</p>
	<p>Move the <b>Joystick</b> to select a view, tool, or menu. Press the Joystick to open your selection. The Joystick is also used to move the cursor across the view and pan 2D/3D chart views.</p>
	<p>Turn the <b>Rotary dial</b> to adjust menu settings. With a view displayed on-screen, press the Rotary dial to open the Views bar.</p>
	<p><b>GO TO/Screen Snapshot key:</b> Press this key once to open the Go To menu for navigation functions. Press and hold this key to save the screen image.</p>
	<p>Press the <b>PANE key</b> to open the View Options menu or to select a pane in a multi-pane view.</p>
	<p><b>MARK/MAN OVERBOARD key:</b> Press and hold this key to start Man Overboard Navigation. To mark waypoints, press this key twice.</p>
	<p>Press the <b>HOME key</b> to display the Home screen. The Home screen allows you to access settings, alarms, views, and tools for the control head.</p>
	<p>For a closer view, press the <b>ZOOM IN [+]</b> key. For a wider view, press the <b>ZOOM OUT [-]</b> key. Press and hold the ZOOM OUT [-] key to zoom out all the way.</p>
	<p><b>MENU key:</b> To open the X-Press Menu for the on-screen view and operation mode, press the MENU key once. To open the Main Menu [Settings tool], press the MENU key twice.</p>