

LAKEMASTER®

QUICK START GUIDE

531803-5_B

INTRODUCTION


Humminbird® LakeMaster® map cards are compatible with Humminbird control heads with chartplotting capabilities.

Locate the instructions that apply to your Humminbird control head[s], as follows:

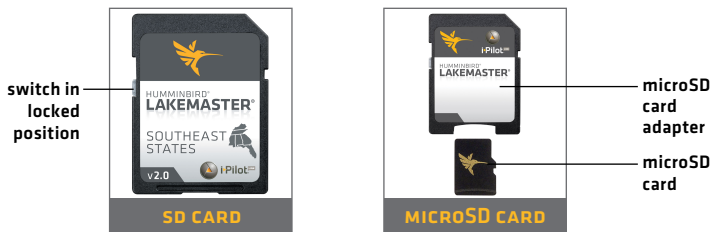
- APEX™ Series
- SOLIX® Series
- HELIX® Series

➤ HUMMINBIRD LAKEMASTER MAP CARDS

Your control head is compatible with either an SD card or a microSD card. It is important to note the following guidelines:

 **WARNING!** Do NOT delete or change the contents of your map card. Changing the card will permanently damage it.

- Confirm the map card is locked [see the illustrations below].
- Do not force the card into the slot. The card should click easily into place.
- **Do not leave the card slot cover open.** Close the slot cover to prevent water damage to the unit.



GETTING STARTED

➤ POWER ON

1. Press the POWER key.
2. **On the water with GPS reception:** select Normal mode.
Off the water without GPS reception: select Simulator mode.

➤ CHECK THE CURRENT SOFTWARE VERSION

It is important to install the latest software update to enable the Humminbird LakeMaster map card on your control head.

LakeMaster PLUS requires the following software versions:

APEX: 3.890 and later

SOLIX: 3.000 and later

HELIX: 1.150 and later

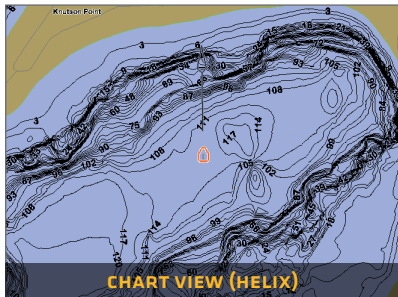
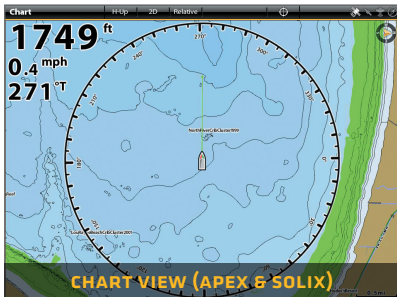
➤ OPEN CHART VIEW

APEX and SOLIX:

1. Press the HOME key.
2. Select Chart View from the Favorites bar.

HELIX:

1. Press the VIEW key until Chart View is displayed on-screen.



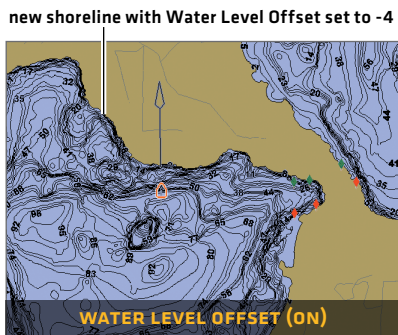
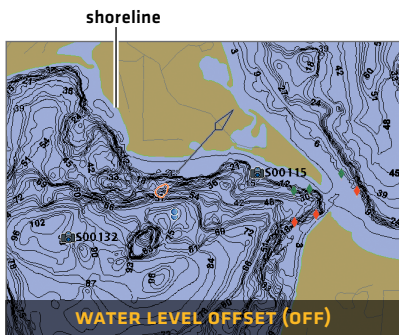
➤ SET THE WATER LEVEL OFFSET

It is important to note if the water level is higher or lower than normal for the selected lake. For example, if the water level is down 3 feet, set the Water Level Offset to -3. Depth labels on the Contour Lines will adjust based on the Water Level Offset setting.

- If the water level is higher than normal, set a positive amount.
- If the water level is lower than normal, set a negative amount.
- If the water level has not changed (**normal**): For APEX and SOLIX, turn Water Level Offset off. For HELIX, set the Water Level Offset to 0.

APEX and SOLIX: Chart X-Press Menu > Water Level Offset

HELIX: Main Menu > HB Chart Menu tab > Water Level Offset



➤ SET DEPTH HIGHLIGHTS

Highlight deep and shallow waters in Chart View and Chart Combo Views using the following LakeMaster features:

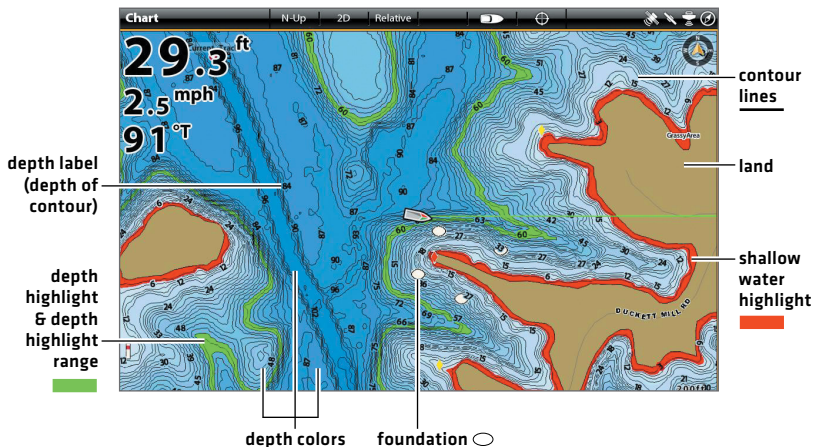
- **Depth Colors** applies shading to various depths.
- **Depth Highlight** and **Depth Highlight Range** allow you to select a depth range to be highlighted in green on the chart.
- **Shallow Water Highlight** identifies shallow waters in red when the depth is equal to or less than the amount you set.

APEX and SOLIX: Chart X-Press Menu > Chart Options > Humminbird Settings

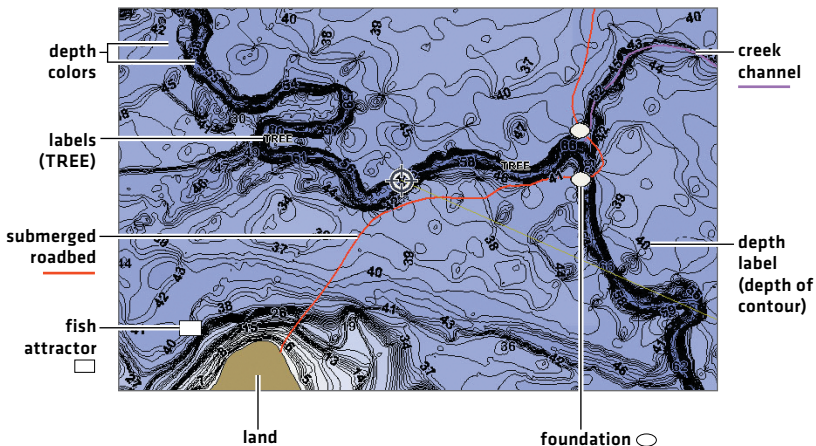
HELIX: Main Menu > HB Chart Menu tab

LAKEMASTER IN CHART VIEW

➤ APEX AND SOLIX



➤ HELIX



TIPS FOR USING THE MAP

➤ MOVE ACROSS THE CHART

APEX and SOLIX



Move the joystick.

HELIX



Press any arrow on the 4-Way Cursor Control key.

➤ SEE MORE ON THE CHART



Zoom in [+] and Zoom out [-] to see more of the chart display [contour lines, depth colors, etc.].

➤ VIEW MAP INFORMATION



Move the cursor to an icon [buoy, marker, etc.], contour line, or position on the chart, and press the CHECK/INFO key.

➤ DISPLAY OR HIDE CONTOUR LINES

Hide Contour Lines to see more details on the chart.

APEX and SOLIX: Chart X-Press Menu > Chart Options > Humminbird Settings > Contour Intervals

HELIX: Main Menu > Chart Menu tab > Contour Lines

➤ CHANGE THE CHART ORIENTATION

Select your display preference: North-Up, Head-Up, Course-Up, etc.

APEX and SOLIX: Chart X-Press Menu > Chart Options > Preferences > Orientation

HELIX: Main Menu > Chart Menu tab > Chart Orientation

➤ DISPLAY A LAKE USING LAKE LIST

The displayed lake map is based on the current latitude/longitude position and the map card installed in the control head. GPS reception is required for the correct lake to be displayed. To display a different lake map from the installed map card, use Lake List.

APEX and SOLIX: Navigation X-Press Menu > Info > Lake List

HELIX: Main Menu > HB Chart Menu tab > Lake List

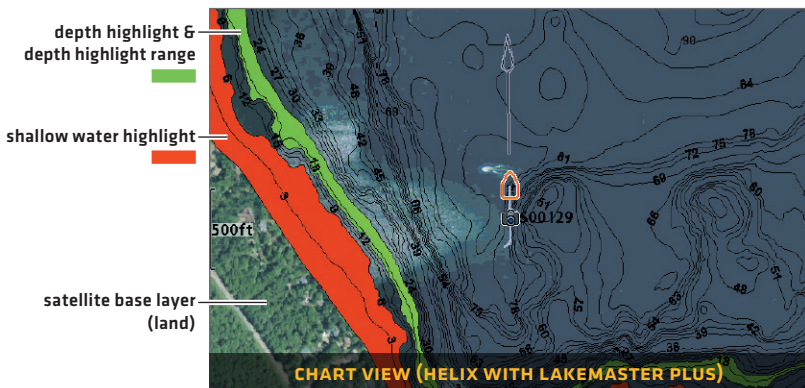
ADVANCED LAKEMASTER FEATURES

➤ LAKEMASTER PLUS: DISPLAY AERIAL IMAGERY

If you have a LakeMaster PLUS map card, add a base layer that shows aerial imagery on the Chart View and Chart Combo Views.

APEX and SOLIX: Chart X-Press Menu > Chart Options > Humminbird Settings > Base Layer

HELIX: Main Menu > HB Chart Menu tab > Base Layer



➤ SMARTSTRIKE®: ACCESS THE SMARTSTRIKE MENU

For more information, download the SmartStrike Accessory Manual from our Web site at humminbird.com.

APEX and SOLIX: Navigation X-Press Menu > Info > SmartStrike

HELIX: Press the CHECK/INFO key > SmartStrike.

➤ AUTOCHART® ZERO LINES

Download the AutoChart ZeroLines Accessory Manual.

TROUBLESHOOTING

➤ **The map is not displayed in Chart View.**

1. Confirm GPS reception.
2. Confirm the Chart Source setting:
APEX and SOLIX: Home > Settings > Chart
HELIX: Main Menu > Chart Menu tab > Map Source
3. Confirm the lake name is in the LakeMaster library.
4. Confirm the control head software is up to date.
5. Confirm compatibility on our Web site.

➤ **How can I view maps on my control head when I am not on the water?**

1. Power on the control head. Select Simulator.
2. Select a lake from Lake List.

➤ **Can I view the Humminbird LakeMaster map card on my computer?**

No, the Humminbird LakeMaster map card is not compatible with your computer. It is only compatible with your Humminbird control head. Installing the Humminbird LakeMaster map card in a computer could corrupt the map files.

➤ **The map displays, but seems to redraw slowly as you move across the water.**

1. Press the ZOOM [-] key to zoom out of the Chart View.
2. Confirm the control head software is up to date.

WARNINGS



WARNING! The electronic chart in your Humminbird unit is an aid to navigation designed to facilitate the use of authorized government charts, not to replace them. Only official government charts and notices to mariners contain all of the current information needed for the safety of navigation, and the captain is responsible for their prudent use.



WARNING! Do NOT save data files (waypoints, routes, tracks, groups, recordings, etc.) to your map card. Saving data to your map card will permanently damage it. You can save navigation data to the control head and export it to a blank card. Download the LakeMaster Map Cards Accessory Guide.



WARNING! Do NOT delete or change the contents of your map card. Changing the card will permanently damage it.