

# SmartStrike Map Card

## HELIX Accessory Manual



SIMPLY. CLEARLY. BETTER.

# OVERVIEW

The SmartStrike map card contains Humminbird LakeMaster map data for freshwater lakes in your region. Use the SmartStrike map card to set specific search parameters, such as fish species and time of day, to locate fish. The search results are highlighted in pink on the Chart Views, so you can quickly target spots to investigate.

## SmartStrike

The following features are exclusive to the SmartStrike map card and can be applied to the Chart View and Chart Combo Views:

<b>Species Search</b>	Species Search allows you to search the lake for a specific fish species. Select the species name and the time of year, time of day, weather conditions, wind conditions, and water conditions you want to target.
<b>Preset Searches</b>	Preset Searches allow you to choose a preselected search based on water depth and underwater structure.
<b>Advanced Search</b>	Advanced Search allows you to refine your preset search or create your own search using criteria such as lake region, depth/slope, sun and direction, proximity, and structure.

## Humminbird LakeMaster

The following Humminbird LakeMaster features are included on the SmartStrike map card and can be applied to the Chart View and Chart Combo Views. To adjust the menu settings, press the MENU key twice. Select the HB Chart tab. For more information, see your control head operations manual.

<b>Depth Highlight</b>	Highlight a depth setting in the Chart Views. The depth you set will be highlighted in green. Use Depth Highlight with Depth Highlight Range [see below].
<b>Depth Highlight Range</b>	Adjust the range on each side of the highlighted depth, when a Depth Highlight is active in the Chart Views.
<b>Water Level Offset</b>	Change the level of the water being read from the control head. The displayed numbers on the Contour Lines in the Chart Views will adjust from the Water Level Offset setting, and the water level offset will be highlighted in dark brown.
<b>Shallow Water Highlight</b>	Select a minimum shallow depth setting so that the depth is highlighted in red in the Chart Views.

## i-Pilot Link

The following features are available if you have i-Pilot Link connected to your HELIX control head and a Minn Kota trolling motor installed on your boat:

<b>Follow the Contour</b>	Navigate a contour on a Humminbird LakeMaster chart. Use Follow the Contour with Contour Offset [see below].
<b>Contour Offset</b>	Set a distance to maintain away from the selected contour line while following a contour.

For more information, see the *i-Pilot Link Installation and Operations Guide*.

# UPDATE THE CONTROL HEAD SOFTWARE

---

It is important to install the latest software update [version 1.210 or later] on your control head to enable SmartStrike.

1. Before the control head software is updated or restored to system defaults, export your navigation data and copy your screen snapshots to an SD card. See your control head operations manual for instructions.



**WARNING!** Humminbird is not responsible for the loss of data files [waypoints, routes, tracks, groups, snapshots, recordings, etc.] that may occur due to direct or indirect damage to the unit's hardware or software. It is important to back up your PC and control head data files periodically. See your control head operations manual for more information.

2. Install a blank SD card into the PC card slot.
3. Go to [humminbird.com](https://humminbird.com), and select **My Humminbird** to sign in to your account.
4. Select the **My Equipment** tab. The available software updates are listed as **Downloads** under each registered product.
  - Under Downloads, click the file name.
  - Read the instructions in the dialog box and select Download.
  - Follow the on-screen prompts to save the software file to the SD card.
5. Repeat step 4 to download the software updates posted to each registered product.
6. Power on your Humminbird control head. Start **Normal** mode.
7. Insert the SD card [with the software file] into the control head card slot.
8. Follow the on-screen prompts to update the control head software. See your control head operations manual for more details.
9. When the software update is complete, remove the SD card from the control head card slot and restart the control head.

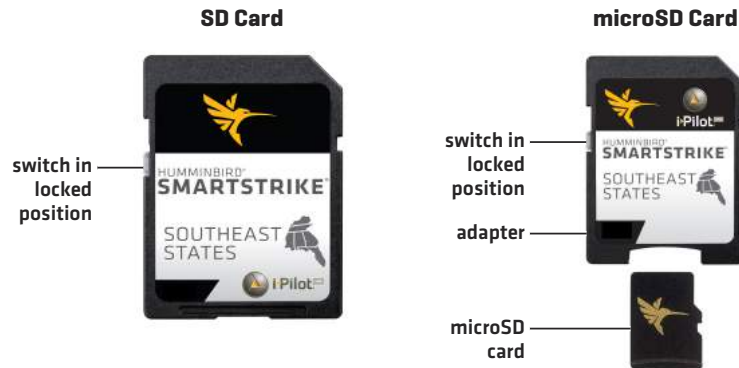
# SET UP SMARTSTRIKE

Use the instructions in this section to use SmartStrike on your HELIX control head.

## 1 | Install the SmartStrike Map Card

Your control head is compatible with either an SD card or a microSD card. If you do not know how to insert the card into the control head, see your control head operations manual for information. It is important to note the following guidelines to install the card:

- Confirm the map card is locked [see the illustrations below].
- Do not force the card into the slot. The card should click easily in place.
- Do not leave the card slot cover open. Close the slot cover to prevent water damage to the unit.



**WARNING!** Do not delete or change the contents of your map card. Changing the card will permanently damage it.



**WARNING!** Do NOT save data files [waypoints, routes, tracks, groups, recordings, screen snapshots, etc.] to the map card.



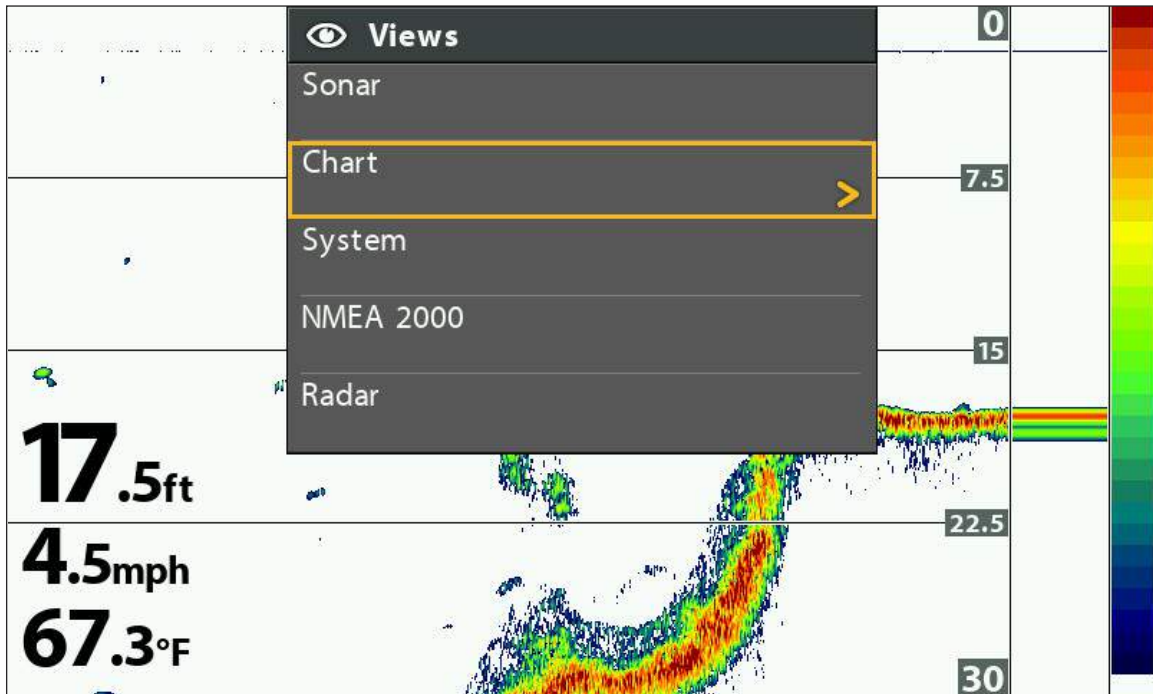
**WARNING!** Do NOT leave the control head card slot cover open. The slot cover should always be closed to prevent water damage to the unit.

## 2 | Open a Chart View

SmartStrike features are available in the Chart View and Chart Combo Views.

1. Press and hold the VIEW key.
2. Select Chart. Press the RIGHT Cursor key.
3. Select Chart View or a Chart Combo View. Press the RIGHT Cursor key.

Opening the Views X-Press Menu



Press and Hold to Open  
the Views X-Press Menu

### 3 | Open the SmartStrike Menu

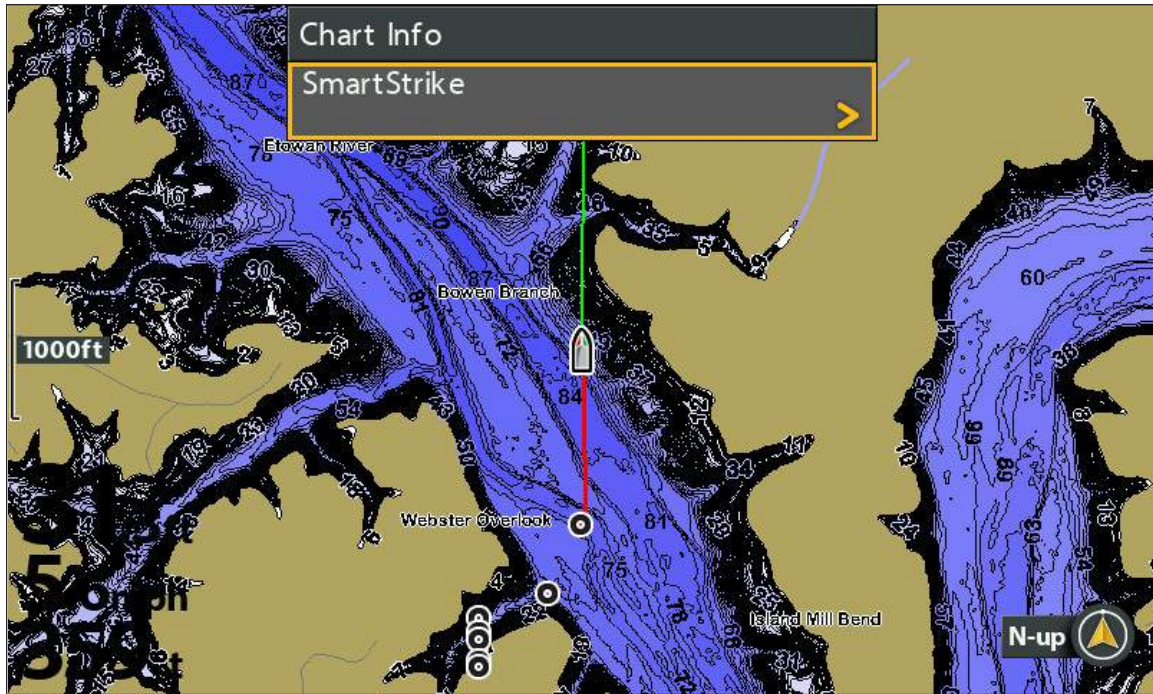
The SmartStrike menu can be opened from the Chart View and Chart Combo Views.

1. Press the CHECK/INFO key.
2. Press the RIGHT Cursor key.



**NOTE:** The SmartStrike Menu will not display when the cursor is active. If the SmartStrike Menu does not display, press the EXIT key to remove the active cursor. Also, confirm the SmartStrike map card is installed correctly in one of the SD card slots on the control head.

#### Opening the SmartStrike Menu



Open the  
SmartStrike Menu

## 4 | Select the Lake

To use SmartStrike, you must first select the lake where you are fishing. For larger lakes, there may be multiple menu options available for specific areas of the lake. The selected lake will be saved if you shut off the control head.

**Change Lakes:** If you change lake locations after initial setup, or to search a different lake, change the lake location in the SmartStrike menu [see *Edit Search Criteria: Change the Selected Lake*].

### Select the Current Lake

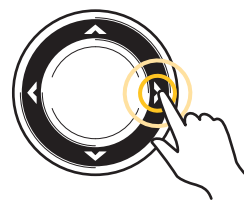
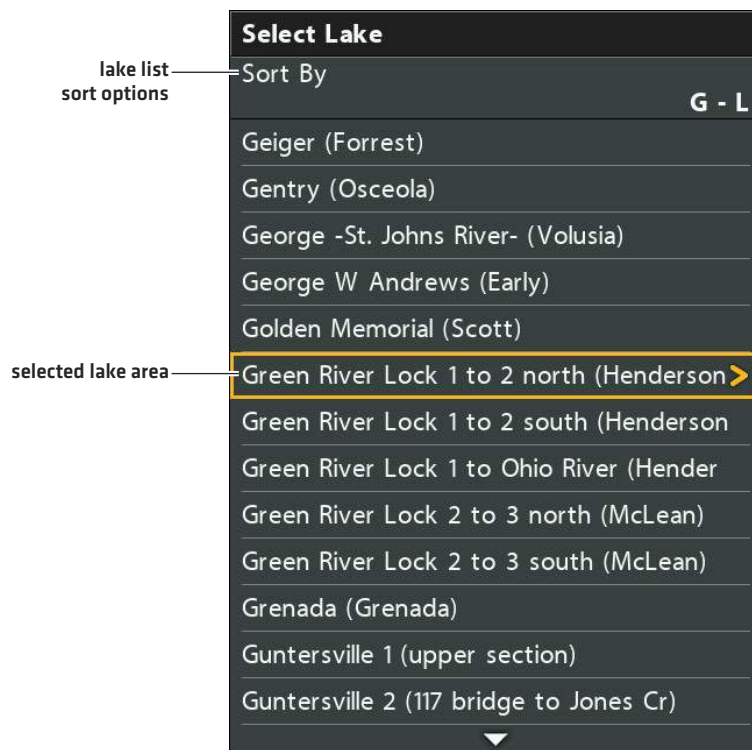
1. Follow the menu prompts to select a lake.
2. Press the RIGHT Cursor key.

**Sort By:** Select the Sort By field, and press the RIGHT or LEFT Cursor keys to select a sort option for the list.

**Scroll:** Press the UP or DOWN Cursor keys to scroll through the list.

**Display:** Select a lake on the list. Press the RIGHT Cursor key.

#### Selecting a Lake






# SEARCH FOR SPECIES

---

Use Species Search to target a specific fish species. The available search options are determined by the selected lake and the selected species. The search criteria is saved until you start a new species search or until the control head is powered off.

1. **Open the SmartStrike Menu:** Press the CHECK/INFO key.  
Select SmartStrike. Press the RIGHT Cursor key.
2. Select the  Species tab.
3. Select Target Species.
4. Press the RIGHT or LEFT Cursor keys to select a species.
5. **Optional:** Use the Cursor Control key to select from any of the additional search options shown below. Press the RIGHT or LEFT Cursor keys to select a search option.

<b>Time of Year</b>	Select the time of year you want to target.
<b>Time of Day</b>	Select the time of day you want to target.
<b>Weather</b>	Select the weather conditions you want to target.
<b>Wind</b>	Select the wind conditions you want to target.
<b>Water</b>	Select the water conditions you want to target.

6. **Start Search:** Select Execute Search. Press the RIGHT Cursor key.



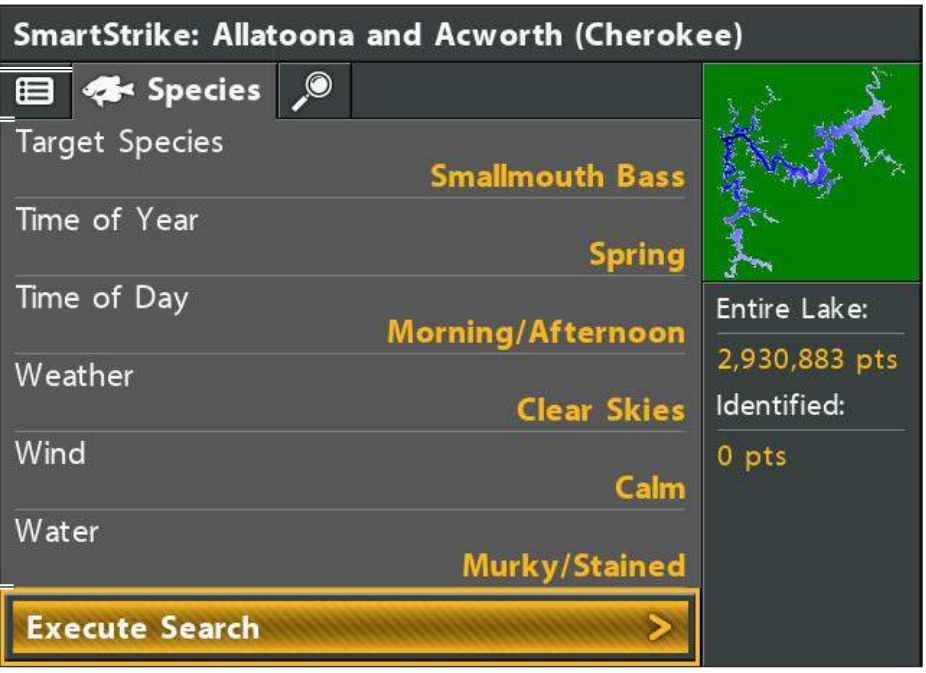
**NOTE:** To understand the search results, see **Review Search Results**.



Selecting Search Options for a Species Search

species tab

search options



The image shows a search options menu for 'SmartStrike: Allatoona and Acworth (Cherokee)'. The menu is dark grey with yellow text. It has a 'Species' tab at the top left with a magnifying glass icon. Below the tab are several search options: 'Target Species' (Smallmouth Bass), 'Time of Year' (Spring), 'Time of Day' (Morning/Afternoon), 'Weather' (Clear Skies), 'Wind' (Calm), and 'Water' (Murky/Stained). To the right of these options is a satellite map of a lake. Below the map, there are statistics: 'Entire Lake: 2,930,883 pts' and 'Identified: 0 pts'. At the bottom of the menu is a yellow 'Execute Search' button with a right-pointing arrow.

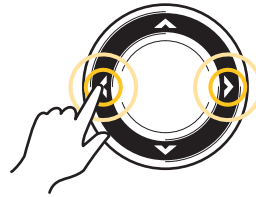
Search Option	Selected Value
Target Species	Smallmouth Bass
Time of Year	Spring
Time of Day	Morning/Afternoon
Weather	Clear Skies
Wind	Calm
Water	Murky/Stained

Entire Lake: 2,930,883 pts  
Identified: 0 pts

Execute Search >




Scroll through the List

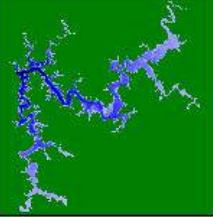


Change Settings

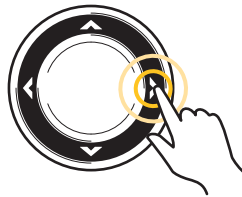
Starting the Species Search

**SmartStrike: Allatoona and Acworth (Cherokee)**

Species 

Target Species	<b>Smallmouth Bass</b>	 Entire Lake: 2,930,883 pts Identified: 0 pts
Time of Year	<b>Spring</b>	
Time of Day	<b>Morning/Afternoon</b>	
Weather	<b>Clear Skies</b>	
Wind	<b>Calm</b>	
Water	<b>Murky/Stained</b>	
<b>Execute Search</b> >		

start search —



Execute Search

# SEARCH FOR STRUCTURE, SPOTS, FEEDING SHELVES, AND MORE (PRESET AND ADVANCED SEARCHES)

---

Preset Searches allow you to target structure, spots, and feeding shelves based on depth. You can also add advanced criteria to your search such as lake region, sun exposure, distance, and more.


The available Preset Searches are determined by the selected lake and the other conditions you select. For example, if you select a lake where the deepest water is 25 feet, the deep water Preset Searches or certain search options may not be available.

The search criteria is saved until you start a new search or until the control head is powered off.



**NOTE:** The criteria in the Advanced tab does not apply to the Species search. They are independent searches.

## Start a Preset Search

1. **Open the SmartStrike Menu:** Press the CHECK/INFO key.  
Select SmartStrike. Press the RIGHT Cursor key.
2. Select the  Advanced tab.
3. Select Preset Searches. Press the RIGHT Cursor key.
4. Select a depth or Other. Press the RIGHT Cursor key.

Shallow	0 to 15 feet [0 to 4.6 meters]
Mid-Depth	16 to 30 feet [4.9 to 9.1 meters]
Deep	31 to 45 feet [9.4 to 13.7 meters]
Other	Select drop-offs, structures at weedline, or structures at thermocline. To make your selection, press the RIGHT Cursor key. Proceed to step 6.



**NOTE:** The depth parameters are estimated. To refine the depth search, see **Start an Advanced Search**.

5. Select a search option. Press the RIGHT Cursor key.

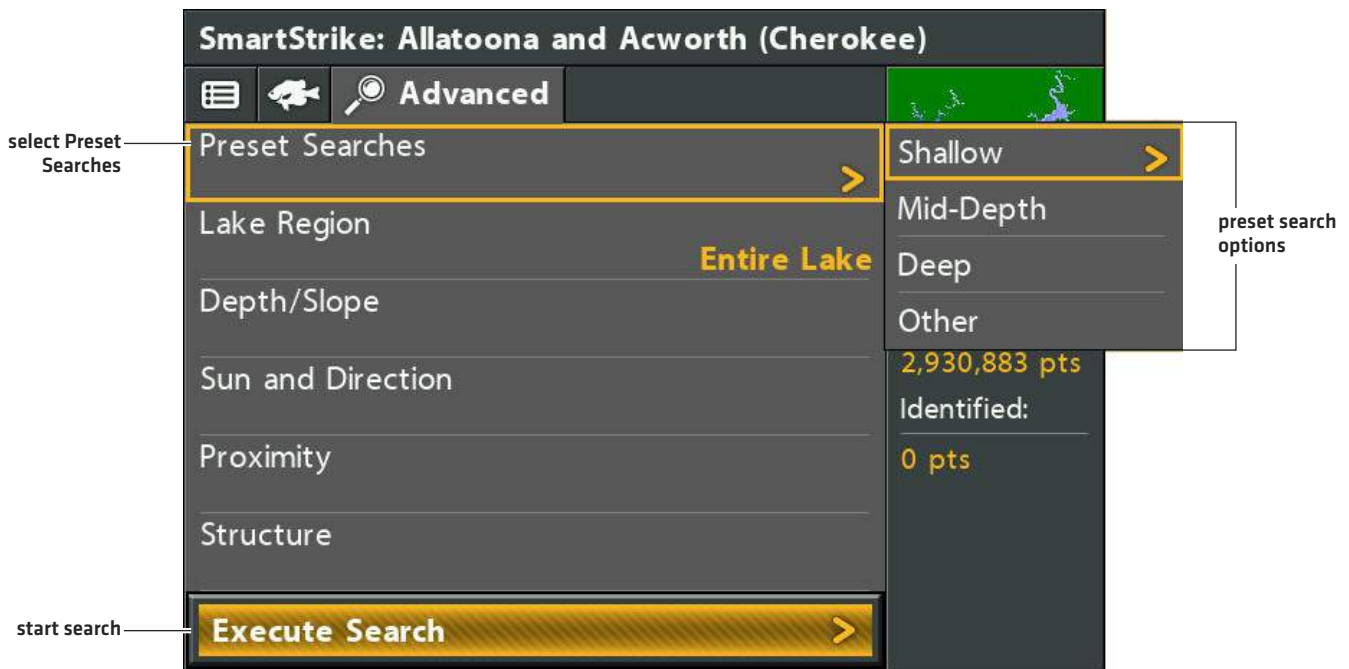
<b>Structure</b>	Search for fish-attracting structure on the lake bottom, such as points, humps, wrecks, timber, rocks, creek beds, and drop-offs. To refine the structure search, see <b><i>Start an Advanced Search</i></b> .
<b>Spots on Spots</b>	Search for structure on top of geographical variations on the lake bottom. For example, rocks or timber on a ledge, lip, or drop off.
<b>Feeding Shelves</b>	Search for underwater shelves or flats.

6. **Start Search:** Select Execute Search. Press the RIGHT Cursor key.

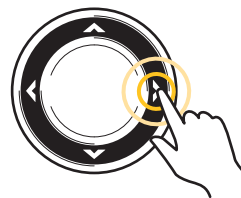
OR

**Advanced [Optional]:** To edit the advanced filters for your search, see ***Start an Advanced Search***.

**Selecting a Preset Search**



Scroll through the List




Select



**NOTE:** To understand the search results, see ***Review Search Results***.

## Start an Advanced Search

You can create a search based on the advanced options shown below. You can also edit these advanced options for your Preset Search [see **Start a Preset Search**].

1. **Open the SmartStrike Menu:** Press the CHECK/INFO key.  
Select SmartStrike. Press the RIGHT Cursor key.
2. Select the  Advanced tab.
3. Select any of the advanced search options [shown below]. Press the RIGHT Cursor key.

**Change Setting:** Press the RIGHT or LEFT Cursor keys.

**Add/Remove Check Mark:** Press the RIGHT Cursor key. [check mark = search, blank = do not search]

**Close a Menu:** Press the EXIT key.

<b>Lake Region</b>	Select the areas of the lake where you want to focus your search. For example, select the entire lake or inlets, coves, or channels.
<b>Depth/Slope</b>	<p><b>Depth Range:</b> Select specific depth values for your search. For example, to search a depth range between 5 and 20 feet from the bottom, set the <b>Depth Range</b> to Between, and set the <b>Depth Start</b> to 5 and the <b>Depth End</b> to 20. See the illustration <b>Selecting Advanced Search Options for Depth/Slope</b>.</p> <p><b>Slope:</b> Add a check mark next to the bottom type you want to target. As you select a depth range, the options for slope will change.</p>
<b>Sun and Direction</b>	<p><b>Sun Exposure:</b> Select sunny or shady areas. When an exposure level has been selected, you can also select the <b>Season</b> and <b>Time of day</b> to search.</p> <p><b>Direction:</b> Add a check mark next to the sun direction you want to target. As you select from the Sun Exposure menu, the options for sun direction will change.</p>
<b>Proximity</b>	Select a specific distance from a lake feature. For example, to search an area less than 80 feet from the shoreline, set <b>Proximity</b> to Less Than, <b>Distance</b> to 80 ft, 27 yds, 25m, and <b>Distance From</b> to Shoreline.
<b>Structure</b>	Select from a list of possible structure for the selected lake. You can select more than one type of structure in this list.



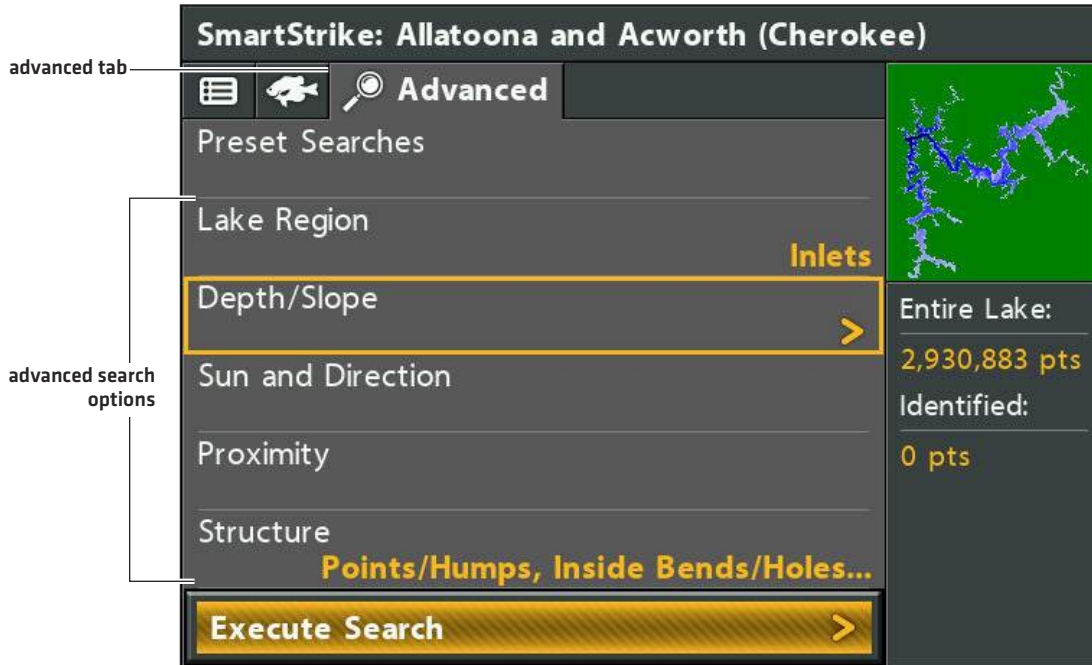
**NOTE:** The depth parameters are estimated.

4. **Start Search:** Select Execute Search. Press the RIGHT Cursor key.

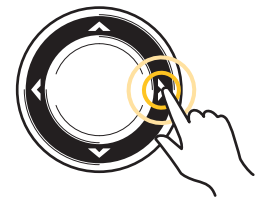
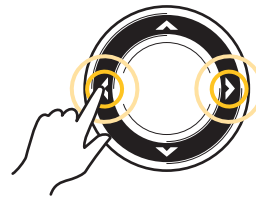
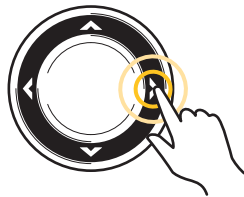


**NOTE:** To understand the search results, see **Review Search Results**.

### Selecting Advanced Search Options



### Selecting Advanced Search Options for Depth/Slope



# REVIEW SEARCH RESULTS

After you execute a Species Search or a Preset/Advanced Search, the results are displayed in the Chart View and the SmartStrike menu.

## Review Detailed Search Results in the Chart View

The Chart View displays the identified points from the search results with SmartStrike icons. To see the search area details, zoom in.

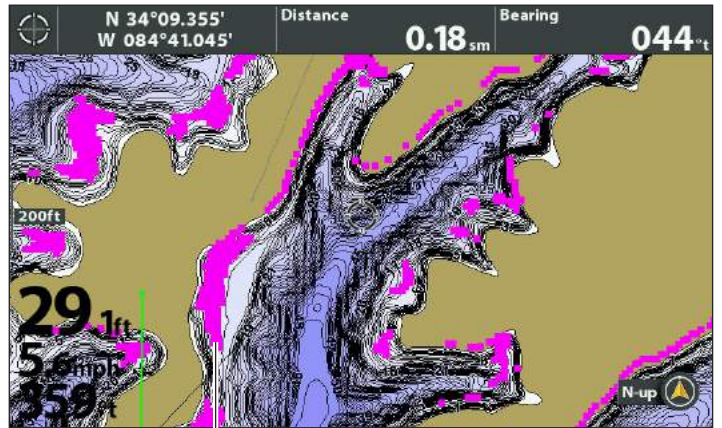
1. To execute a search, see *Search for Species* or *Search for Structure, Spots, Feeding Shelves, and More (Preset and Advanced Searches)*.
2. Use the Cursor Control key to move the cursor to a SmartStrike icon on the view.
3. **Zoom In:** Press the +ZOOM key.  
**Zoom Out:** Press the -ZOOM key.
4. **Close:** Press the EXIT key.

Chart View with SmartStrike Icons



SmartStrike icons show identified points from search results

Zooming in to see SmartStrike Search Details



pink highlighted areas identify search results in detail

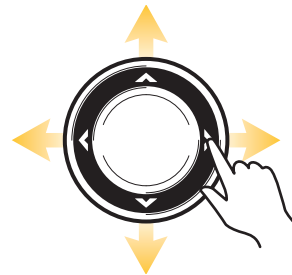


ZOOM In



ZOOM Out

OR



Move the Cursor



ZOOM In



## Review Identified Points in the SmartStrike Menu

The SmartStrike menu shows a preview of the searched lake, the total SmartStrike points available, and the points identified by the last executed search.

1. To execute a search, see *Search for Species* or *Search for Structure, Spots, Feeding Shelves, and More [Preset and Advanced Searches]*.
2. **Open the SmartStrike Menu:** Press the CHECK/INFO key.  
Select SmartStrike. Press the RIGHT Cursor key.
3. Review the Identified points number [see the illustration below].
4. **Close:** Press the EXIT key.

### Reviewing Search Results from the SmartStrike Menu

The screenshot displays the SmartStrike menu for the lake "Allatoona and Acworth (Cherokee)". The menu is organized into several sections:

- Header:** "SmartStrike: Allatoona and Acworth (Cherokee)" with a "selected lake" label pointing to it.
- Navigation:** A top bar with a list icon, a fish icon labeled "Species", and a magnifying glass icon.
- Search Criteria:** A list of criteria with their current settings:
  - Target Species: **Smallmouth Bass**
  - Time of Year: **Spring**
  - Time of Day: **Morning/Afternoon**
  - Weather: **Clear Skies**
  - Wind: **Calm**
  - Water: **Murky/Stained**
- Map:** A satellite-style map of the lake with a blue overlay, labeled "lake preview".
- Point Counts:** A summary section on the right:
  - Entire Lake: **2,930,883 pts** (labeled "total points")
  - Identified: **69,819 pts** (labeled "points from last executed search")
- Action:** A large yellow button at the bottom labeled "Execute Search" with a right-pointing arrow.

# HIDE/SHOW SEARCH RESULTS

---

## Hide/Show Search Results

Use the instructions in this section to hide search results temporarily from the Chart View. To delete the results, see **Clear Search Results**.

1. **Open the SmartStrike Menu:** Press the CHECK/INFO key.  
Select SmartStrike. Press the RIGHT Cursor key.
2. Select Display Results.
3. Press the RIGHT Cursor key. [check mark = visible, blank = hidden]

**Show:** To display the results again, add a check mark to Display Results.

## Clear Search Results

Use Clear Search Results to delete the search results from the Chart View. Your last search criteria is still saved in the SmartStrike menu, so you can execute the search again. To hide search results temporarily from the display, so they can be displayed again quickly, see **Hide/Show Search Results** in this section.

1. **Open the SmartStrike Menu:** Press the CHECK/INFO key.  
Select SmartStrike. Press the RIGHT Cursor key.
2. Select Clear Results.
3. Press the RIGHT Cursor key.

# EDIT SEARCH CRITERIA

---

## Edit Search Criteria

The SmartStrike menu saves your most recent search until the control head is powered off. To run a search again, select the Execute Search menu in the Species tab or the Advanced tab. You can edit the search at any time. See ***Search for Species*** or ***Search for Structure, Spots, Feeding Shelves, and More***.

## Clear Search Criteria

Use Clear Criteria to reset the search criteria in the SmartStrike menu. The latest search criteria will be deleted, and the SmartStrike menu will be reset to its default settings.

1. **Open the SmartStrike Menu:** Press the CHECK/INFO key.  
Select SmartStrike. Press the RIGHT Cursor key.
2. Select Clear Criteria.
3. Press the RIGHT Cursor key.

## Change the Selected Lake

If you change lake areas after initial setup (see ***Set up SmartStrike***), or to search a different lake, use the following instructions to change the lake location in the SmartStrike menu.

1. **Open the SmartStrike Menu:** Press the CHECK/INFO key.  
Select SmartStrike. Press the RIGHT Cursor key.
2. Choose Select Lake.
3. Press the RIGHT Cursor key.

**Sort By:** Select the Sort By field, and press the RIGHT or LEFT Cursor keys to select a sort option for the list.

**Scroll:** Press the UP or DOWN Cursor keys to scroll through the list.

**Display:** Select a lake on the list. Press the RIGHT Cursor key.

## Selecting a Lake

lake list  
sort options

selected lake area

### Select Lake

Sort By G - L

Geiger (Forrest)

Gentry (Osceola)

George -St. Johns River- (Volusia)

George W Andrews (Early)

Golden Memorial (Scott)

**Green River Lock 1 to 2 north (Henderson >**

Green River Lock 1 to 2 south (Henderson)

Green River Lock 1 to Ohio River (Hender

Green River Lock 2 to 3 north (McLean)

Green River Lock 2 to 3 south (McLean)

Grenada (Grenada)

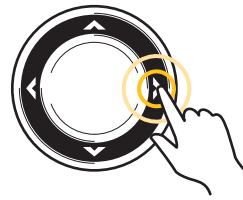
Guntersville 1 (upper section)

Guntersville 2 (117 bridge to Jones Cr)

▼



Scroll through the List



Select