

# SmartStrike Map Card

## Accessory Manual


532321-1EN\_A





SIMPLY. CLEARLY. BETTER.


# THANK YOU!


Thank you for choosing Humminbird®, the #1 name in marine electronics. Humminbird has built its reputation by designing and manufacturing top quality, thoroughly reliable marine equipment. Your Humminbird is designed for trouble-free use in even the harshest marine environment. In the unlikely event that your Humminbird does require repairs, we offer an exclusive Service Policy. For complete details, see the separate warranty card included with your unit. We encourage you to read this operations manual carefully in order to get the full benefit from all the features and applications of your Humminbird product.


 **WARNING!** This device should not be used as a navigational aid to prevent collision, grounding, boat damage, or personal injury. When the boat is moving, water depth may change too quickly to allow time for you to react. Always operate the boat at very slow speeds if you suspect shallow water or submerged objects.


 **WARNING!** The electronic chart in your Humminbird unit is an aid to navigation designed to facilitate the use of authorized government charts, not to replace them. Only official government charts and notices to mariners contain all of the current information needed for the safety of navigation, and the captain is responsible for their prudent use.


 **WARNING!** Do NOT delete or change the lakes or LkMaster folders on the SmartStrike Map Card. Changing these folders will permanently damage the SmartStrike Map Card.


 **WARNING!** Do not save data files [waypoints, routes, tracks, groups, recordings, screen snapshots, etc.] to the SmartStrike Map Card.


 **WARNING!** Humminbird is not responsible for the loss of data files [waypoints, routes, tracks, groups, recordings, etc.] that may occur due to direct or indirect damage to the unit's hardware or software. It is important to back up your control head's data files periodically. Data files should also be saved to your PC before restoring the unit's defaults or updating the software.


 **WARNING!** Disassembly and repair of this electronic unit should only be performed by authorized service personnel. Any modification of the serial number or attempt to repair the original equipment or accessories by unauthorized individuals will void the warranty.

 **WARNING!** This product contains chemicals known to the State of California to cause cancer and birth defects or other reproductive harm.

 **NOTE:** Some features discussed in this manual require a separate purchase, and some features are only available on international models. Every effort has been made to clearly identify those features. Please read the manual carefully in order to understand the full capabilities of your model.

 **NOTE:** The illustrations in this manual may not look the same as your product, but your unit will function in the same way.

 **NOTE:** The procedures and features described in this manual are subject to change without notice. This manual was written in English and may have been translated to another language. Humminbird is not responsible for incorrect translations or discrepancies between documents.

 **NOTE:** Product specifications and features are subject to change without notice.

**ROHS STATEMENT:** Product designed and intended as a fixed installation or part of a system in a vessel may be considered beyond the scope of Directive 2002/95/EC of the European Parliament and of the Council of 27 January 2003 on the restriction of the use of certain hazardous substances in electrical and electronic equipment.

**ATTENTION INTERNATIONAL CUSTOMERS:** Products sold in the U.S. are not intended for use in the international market. Humminbird international units provide international features and are designed to meet country and regional regulations. Languages, maps, time zones, units of measurement, and warranty are examples of features that are customized for Humminbird international units purchased through our authorized international distributors.

**ENVIRONMENTAL COMPLIANCE STATEMENT:** It is the intention of Johnson Outdoors Marine Electronics, Inc. to be a responsible corporate citizen, operating in compliance with known and applicable environmental regulations, and a good neighbor in the communities where we make or sell our products.

**WEEE DIRECTIVE:** EU Directive 2002/96/EC “Waste of Electrical and Electronic Equipment Directive [WEEE]” impacts most distributors, sellers, and manufacturers of consumer electronics in the European Union. The WEEE Directive requires the producer of consumer electronics to take responsibility for the management of waste from their products to achieve environmentally responsible disposal during the product life cycle.

WEEE compliance may not be required in your location for electrical & electronic equipment (EEE), nor may it be required for EEE designed and intended as fixed or temporary installation in transportation vehicles such as automobiles, aircraft, and boats. In some European Union member states, these vehicles are considered outside of the scope of the Directive, and EEE for those applications can be considered excluded from the WEEE Directive requirement.



This symbol [WEEE wheelee bin] on product indicates the product must not be disposed of with other household refuse. It must be disposed of and collected for recycling and recovery of waste EEE. Johnson Outdoors Marine Electronics, Inc. will mark all EEE products in accordance with the WEEE Directive. It is our goal to comply in the collection, treatment, recovery, and environmentally sound disposal of those products; however, these requirements do vary within European Union member states. For more information about where you should dispose of your waste equipment for recycling and recovery and/or your European Union member state requirements, please contact your dealer or distributor from which your product was purchased.

Cross Touch®, Humminbird®, i-Pilot® Link™, ION™, LakeMaster®, Minn Kota®, ONIX®, and SmartStrike™ are trademarked by or registered trademarks of Johnson Outdoors Marine Electronics, Inc.

Adobe, Acrobat, Adobe PDF, and Reader are either registered trademarks or trademarks of Adobe Systems Incorporated in the United States and/or other countries.

© 2014 Johnson Outdoors Marine Electronics, Inc. All rights reserved.

# TABLE OF CONTENTS

---

<b>Warnings</b>	<b>2</b>
<b>Overview</b>	<b>7</b>
<b>Features</b>	<b>8</b>
SmartStrike	8
Humminbird LakeMaster	8
i-Pilot Link	8
<b>Preparation</b>	<b>9</b>
Update your Control Head Software	9
Install the SmartStrike Map Card	9
<b>Getting Started</b>	<b>10</b>
Open the Chart View	10
Open the SmartStrike Main Menu	12
Select Lake	13
<b>The SmartStrike Main Menu</b>	<b>14</b>
SmartStrike Menu Categories	15
<b>SmartStrike Preset Searches</b>	<b>16</b>
Preset Searches	17
Saved Searches	18
<b>SmartStrike Species Search</b>	<b>21</b>
Species Search Menu Options	22
Execute a Species Search	22
<b>SmartStrike Advanced Search</b>	<b>25</b>
Advanced Search Menu Options	26
Execute an Advanced Search	27
<b>SmartStrike Search Results</b>	<b>29</b>
Adjust the Search Results Display	29
Center the Search Results on the Display	30
Executing Multiple Searches: Add or Replace Search Results	31
<b>Changing the Selected Lake</b>	<b>32</b>
<b>Managing your SmartStrike Searches</b>	<b>33</b>
Save a SmartStrike Search	33
Edit a Search Name or Delete a Saved Search	34
<b>Contact Humminbird</b>	<b>35</b>

# OVERVIEW

---

The SmartStrike Map Card contains Humminbird LakeMaster map data for freshwater lakes in your region. Use the SmartStrike Map Card to set specific search parameters, such as fish species and time of day, to locate fish. Search results will be highlighted in pink on the chart display.



**WARNING!** Do NOT delete or change the lakes or LkMaster folders on the SmartStrike Map Card. Changing these folders will permanently damage the SmartStrike Map Card.



**WARNING!** Do not save data files (waypoints, routes, tracks, groups, recordings, screen snapshots, etc.) to the SmartStrike Map Card.

## ONIX and ION

Refer to the installation guide included with your ONIX or ION and the *ONIX and ION Operations Guide* for complete details about the installation and operation of your Humminbird control head.

## Cross Touch

The ONIX and ION systems include Cross Touch, a feature that allows you to use the touch screen or the keypad to select menus and start actions on the Humminbird control head. For complete information and instructions, see the *ONIX and ION Operations Guide*.

# FEATURES

## SmartStrike

The following features are exclusive to the SmartStrike Map Card and can be applied to Chart View and Chart Combo Views:

<b>Preset Searches</b>	Preset Searches allow you to choose a preselected search based on water depth and underwater structure. Also, use the Preset Searches menu to access your saved searches.
<b>Species Search</b>	Species Search allows you to search the lake for a specific fish species. Select the species name and the current season, time of day, weather conditions, and water clarity.
<b>Advanced Search</b>	Advanced Search allows you to create your own search using criteria such as depth, slope, aspect, sun exposure, proximity, and structure.

## Humminbird LakeMaster

The following Humminbird LakeMaster features are included on the SmartStrike Map Card and can be applied to Chart View and Chart Combo Views. For information about Humminbird LakeMaster features, see the ***ONIX and ION Operations Guide***.

<b>Depth Highlight</b>	Highlight a depth setting in Chart Views. The depth you set will be highlighted in green. Use Depth Highlight with Depth Highlight Range [see below].
<b>Depth Highlight Range</b>	Adjust the range on each side of the highlighted depth, when a Depth Highlight is active in Chart Views.
<b>Water Level Offset</b>	Change the level of the water being read from the control head. The displayed numbers on the Contour Lines in chart views will adjust from the Water Level Offset setting, and the water level offset will be highlighted in dark brown.
<b>Shallow Water Highlight</b>	Select a minimum shallow depth setting so that the depth is highlighted in red in Chart Views.

## i-Pilot Link

The following features are available if you have i-Pilot Link connected to your ONIX or ION and a Minn Kota trolling motor installed on your boat:

<b>Follow the Contour</b>	Navigate a contour on a Humminbird LakeMaster chart. Use Follow the Contour with Contour Offset [see below].
<b>Contour Offset</b>	Set a distance to maintain away from the selected contour line while following a contour.

For more information, see the ***i-Pilot Link for ONIX and ION Operations Guide***.

# PREPARATION

Perform the procedures in the following section to prepare your fishing system to use the SmartStrike Map Card.

## 1 | Update your Control Head Software

It is important to install the latest software update on your control head to enable SmartStrike.

1. Before the control head software is updated or restored to system defaults, export your navigation data and copy your screen snapshots to an SD card. See your control head operations manual for instructions.

**⚠ WARNING!** Humminbird is not responsible for the loss of data files (waypoints, routes, tracks, groups, snapshots, recordings, etc.) that may occur due to direct or indirect damage to the unit's hardware or software. It is important to back up your PC and control head data files periodically. See your control head operations manual for more information.

2. Install a blank SD card into the PC card slot.
3. Select **My Humminbird** to sign in to your account.
4. Select the **My Equipment** tab. The available software updates are listed as **Downloads** under each registered product.
  - Under Downloads, click the file name.
  - Read the instructions in the dialog box and select Download.
  - Follow the on-screen prompts to save the software file to the SD card.
5. Repeat step 4 to download the software updates posted to each registered product.
6. Power on your Humminbird control head. Start **Normal** mode.
7. Insert the SD card (with the software file) into the control head card slot.
8. Follow the on-screen prompts to update the control head software. See your control head operations manual for more details.
9. When the software update is complete, remove the SD card from the control head card slot.
10. **Restart:** If you don't have any other software updates to install, power off the control head, and restart it.

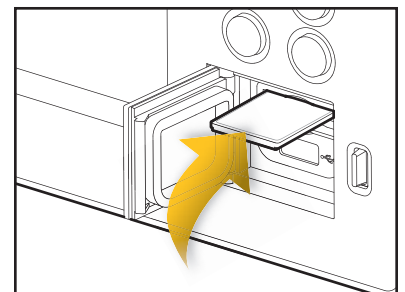
## 2 | Install the SmartStrike Map Card

It is important to consider the following tips when installing the SmartStrike Map Card:

### Install the SmartStrike Map Card

1. Remove the SD memory card slot cover.
2. Position the card so that the label faces the left side or right side of the unit (see your control head operations manual for details), and insert the card into the slot. Press down on the card until it clicks into place.
3. Close the slot cover and turn the knob just 1/4 of a turn to close. Do NOT overtighten, as this will not improve water resistance and may damage the cover.

Inserting the Map Card



### Remove the SmartStrike Map Card

1. Press the card into the slot and then release. The card will eject, and you can then pull the card from the slot.

**📄 NOTE:** Do not leave the SD slot cover open. The slot cover should always be closed to prevent water damage to the unit.

# GETTING STARTED

Use the instructions in this section to get started using SmartStrike on your ONIX or ION control head.

## 1 | Open the Chart View

SmartStrike features are available in Chart View and Chart Combo views. You can open the Chart View from the Favorites bar or the Views tool. The Views tool includes the complete database of available views for your control head. See the *ONIX and ION Operations Guide* for more information about views.



**NOTE:** To customize your chart display, see the *ONIX and ION Operations Guide*.

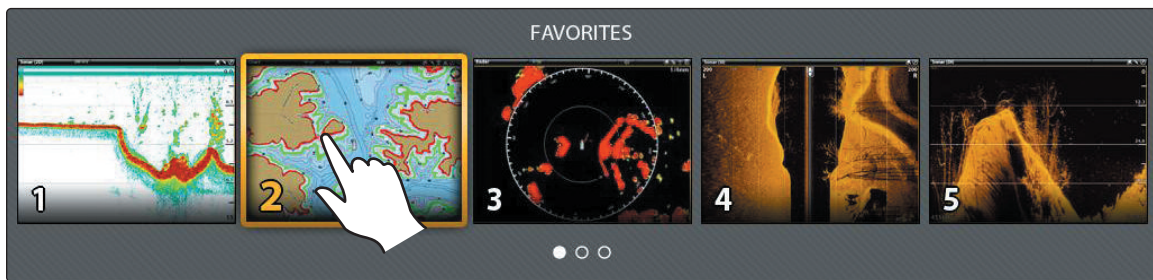
### Open Chart View from the Favorites Bar

1. Press the HOME key. Locate the Favorites bar.
2. Tap the Chart View to display it on-screen.

OR

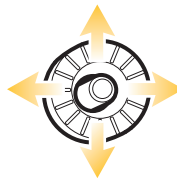
Use the Joystick to select the Chart View and press the ENTER key to display it on-screen.

Opening Chart View from the Favorites Bar



Tap to Open

OR



Select



Open



## Open the Chart View from the Views Tool

1. From the Home screen, tap the **Views** tool.

OR

Use the Joystick to select the **Views** tool and press the ENTER key.

2. Under Groups, select **Chart**.

3. Tap the Chart View to display it on-screen.

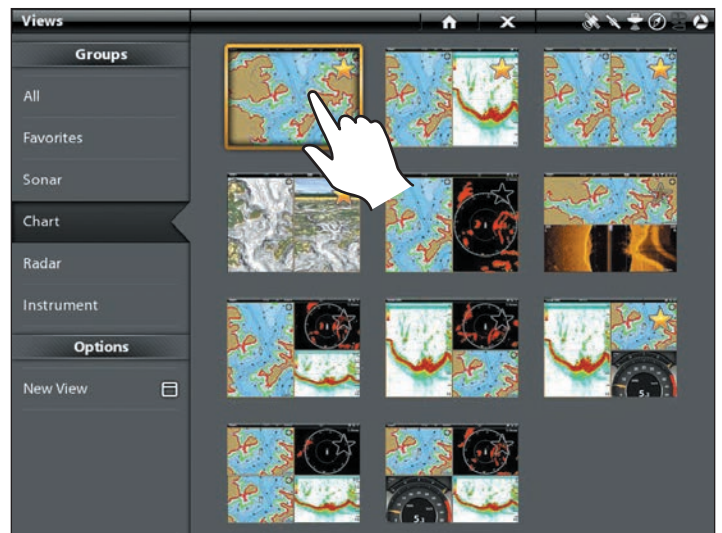
OR

Use the Joystick to select the Chart View and press the ENTER key to display it on-screen.

**Opening the Views Tool**

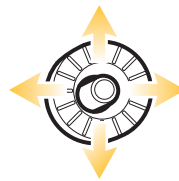


**Selecting the Chart View**



Tap to Open

OR



Select



Open

## 2 | Open the SmartStrike Main Menu

Confirm installation and operation of the SmartStrike Map Card by opening the SmartStrike main menu.

### Touch Screen

1. Tap Chart in the status bar.
2. Select **Info**.
3. Select **SmartStrike**.

The Select Lake menu will automatically display on-screen. Proceed to procedure 3, **Select Lake**.

### Keypad

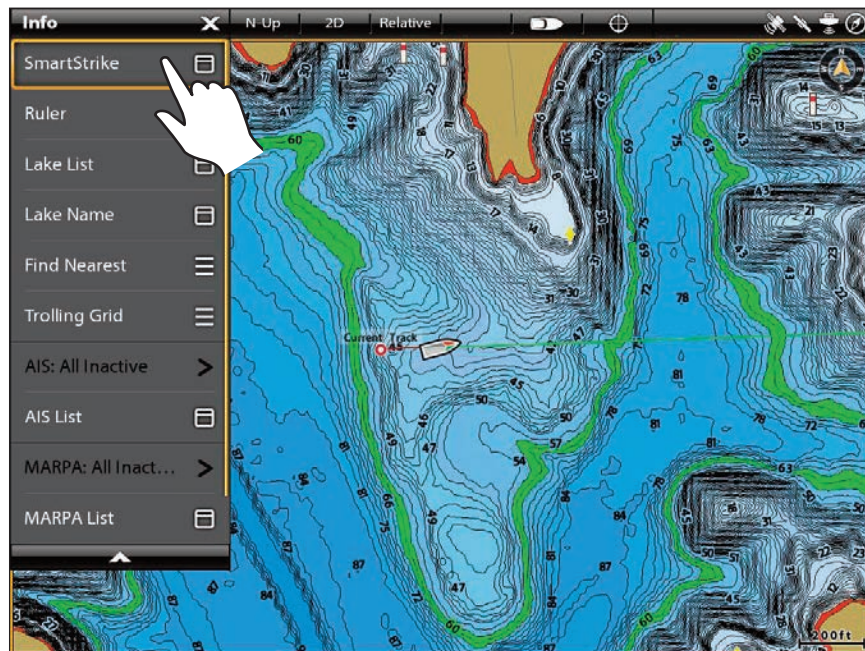
1. Press the **ENTER** key.
2. Use the Joystick to select **Info**. Press the ENTER key.
3. Select **SmartStrike**. Press the ENTER key.

The Select Lake menu will automatically display on-screen. Proceed to procedure 3, **Select Lake**.



**NOTE:** If SmartStrike is not displayed under the Info menu, confirm the SmartStrike Map Card is properly installed in one of the SD card slots on the control head.

### Opening the SmartStrike Main Menu



Tap to Select

OR



Open the Info Menu



Select



Confirm

### 3 | Select Lake

To use SmartStrike, you must first select the lake where you will be fishing. For larger lakes, there may be multiple menu options available for specific areas of the lake.

You will be prompted to select a lake every time you power on your control head and open the SmartStrike menu. To change the selected lake during operation, see **Changing the Selected Lake**.

#### Touch Screen

1. Within the Select Lake menu, touch the screen with one finger and swipe up or down to scroll through the list.
2. **Select:** Tap the lake name.

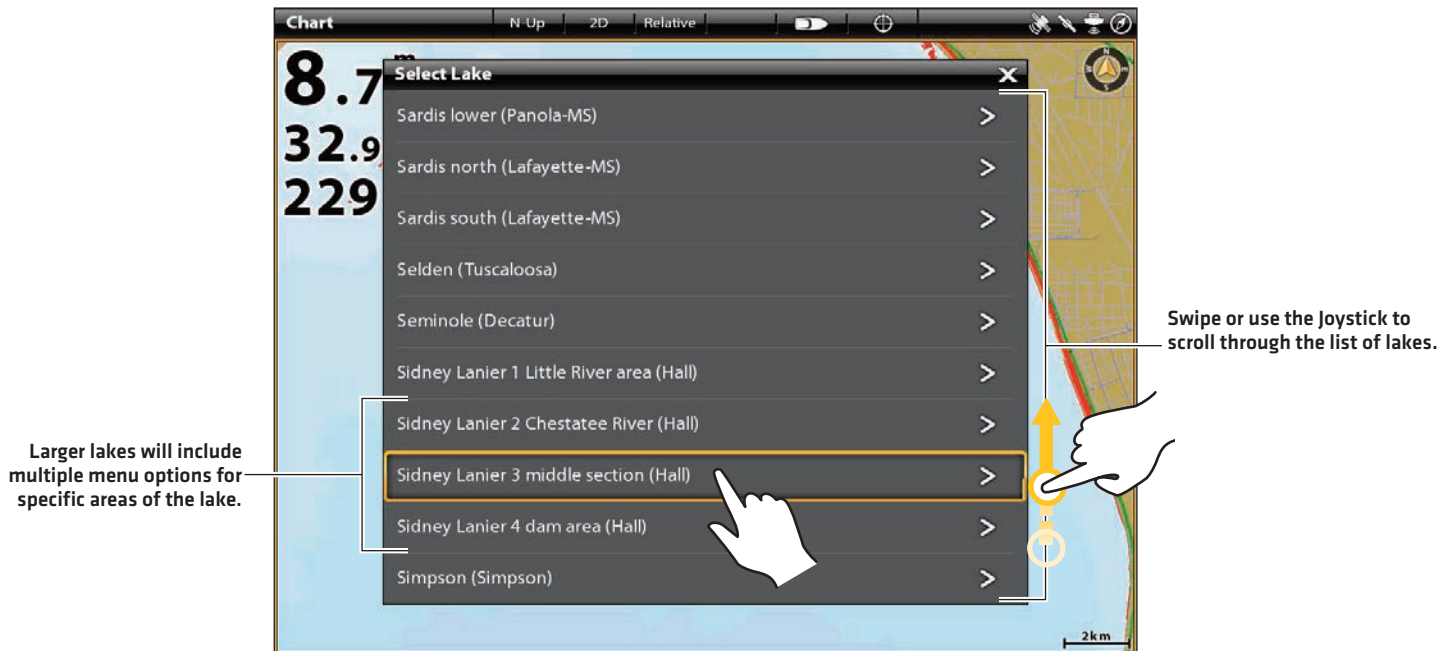
The SmartStrike menu for the selected lake will be displayed on-screen.

#### Keypad

1. Use the Joystick to select a lake name.
2. **Select:** Press the ENTER key.

The SmartStrike menu for the selected lake will be displayed on-screen.

#### Selecting the Lake



Tap to Select

OR



Select



Confirm

# THE SMARTSTRIKE MAIN MENU

It is important to consider the following tips when using the SmartStrike Main Menu:

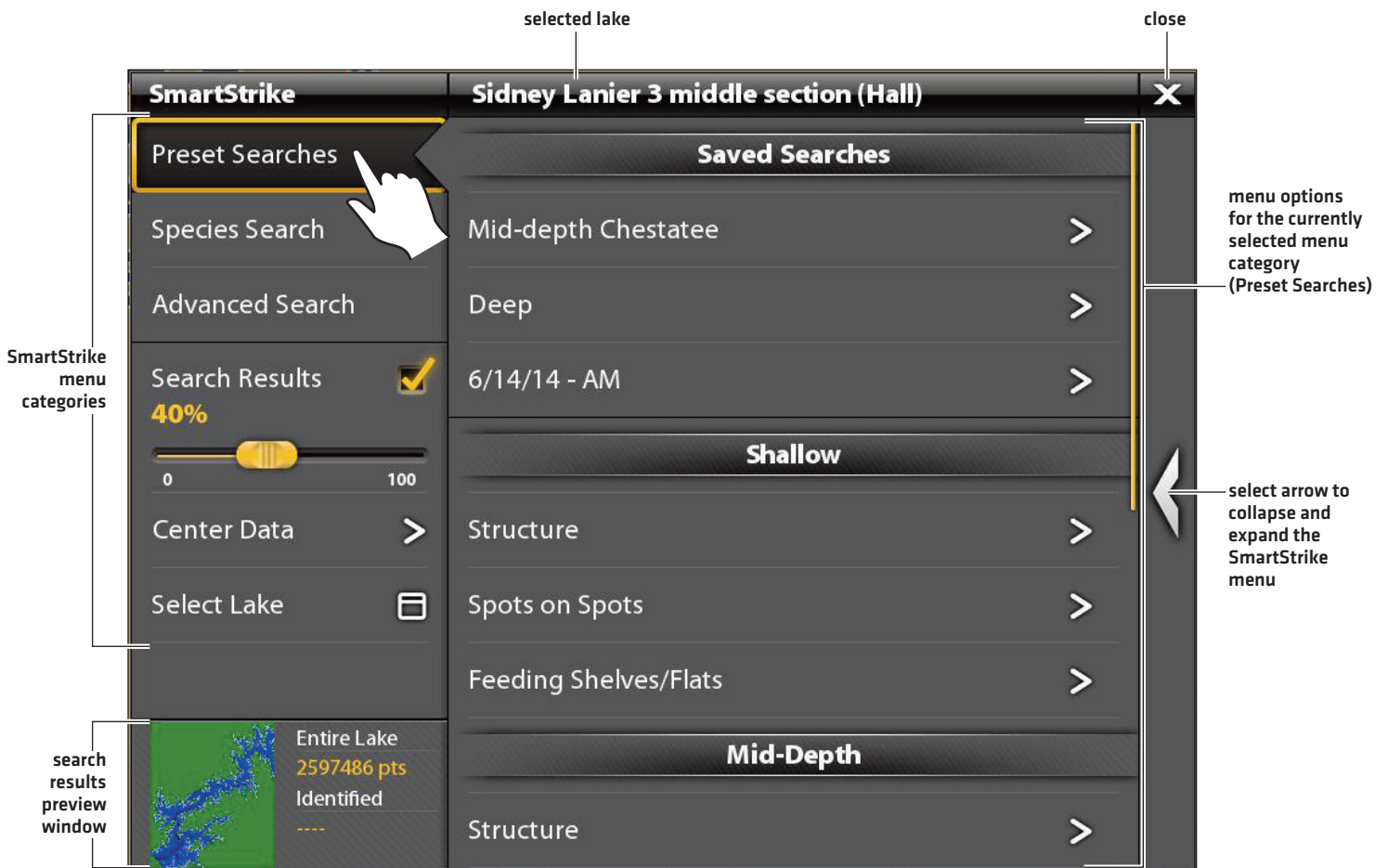
- **Menu Categories** are displayed on the left side of the SmartStrike main menu. See the table *SmartStrike Menu Categories* for more information.
- The **currently selected menu category** will display its menu options in the center of the SmartStrike main menu.
- The **selected lake** name is displayed at the top of the SmartStrike main menu.
- **To collapse [and expand] the SmartStrike main menu**, select the arrow on the right side of the SmartStrike main menu. This will allow you to quickly display the currently displayed view [Chart View or Chart/Chart Combo View].



**NOTE:** For more information about the ONIX and ION menu system and selecting settings, see the *ONIX and ION Operations Guide*.

See the following sections for more information about SmartStrike menu categories, menu options, and how to execute SmartStrike searches.

SmartStrike Main Menu



## SmartStrike Menu Categories

<p><b>Preset Searches</b></p>	<p>Use Preset Searches to choose and execute a search with preselected search settings based on water depth and underwater structure. Also, use the Preset Searches menu to access your saved searches. See <b>SmartStrike Preset Searches</b>.</p>
<p><b>Species Search</b></p>	<p>Use Species Search to search the selected lake for a specific fish species. Select the species name, current season and weather conditions, time of day, and other conditions.</p> <p>The fish species listed under the Species Search menu will vary based on the selected lake. See <b>SmartStrike Species Search</b>.</p>
<p><b>Advanced Search</b></p>	<p>Use Advanced Search to create your own search or customize a Preset Search. Select from a combination of menu options, such as depth, sun exposure, and structure. See <b>SmartStrike Advanced Search</b>.</p>
<p><b>Search Results</b></p>	<p>Display, hide, or adjust the transparency of the displayed search results. See <b>SmartStrike Search Results</b>.</p>
<p><b>Center Data</b></p>	<p>Select Center Data to automatically adjust the zoom scale of the Chart View to center all search results on the display. See <b>SmartStrike Search Results: Center the Search Results on the Display</b>.</p>
<p><b>Select Lake</b></p>	<p>Change the selected lake.</p>
<p><b>Search Results Preview Window [lower left corner]</b></p>	<p>The Search Results Preview Window displays a small map of the selected lake and both the total number of data points available and the number of data points identified by the current search.</p> <p>The total number of data points available for the selected lake are displayed under <b>Entire Lake</b>. The total number of data points located as a result of the executed search are displayed under <b>Identified</b>.</p>

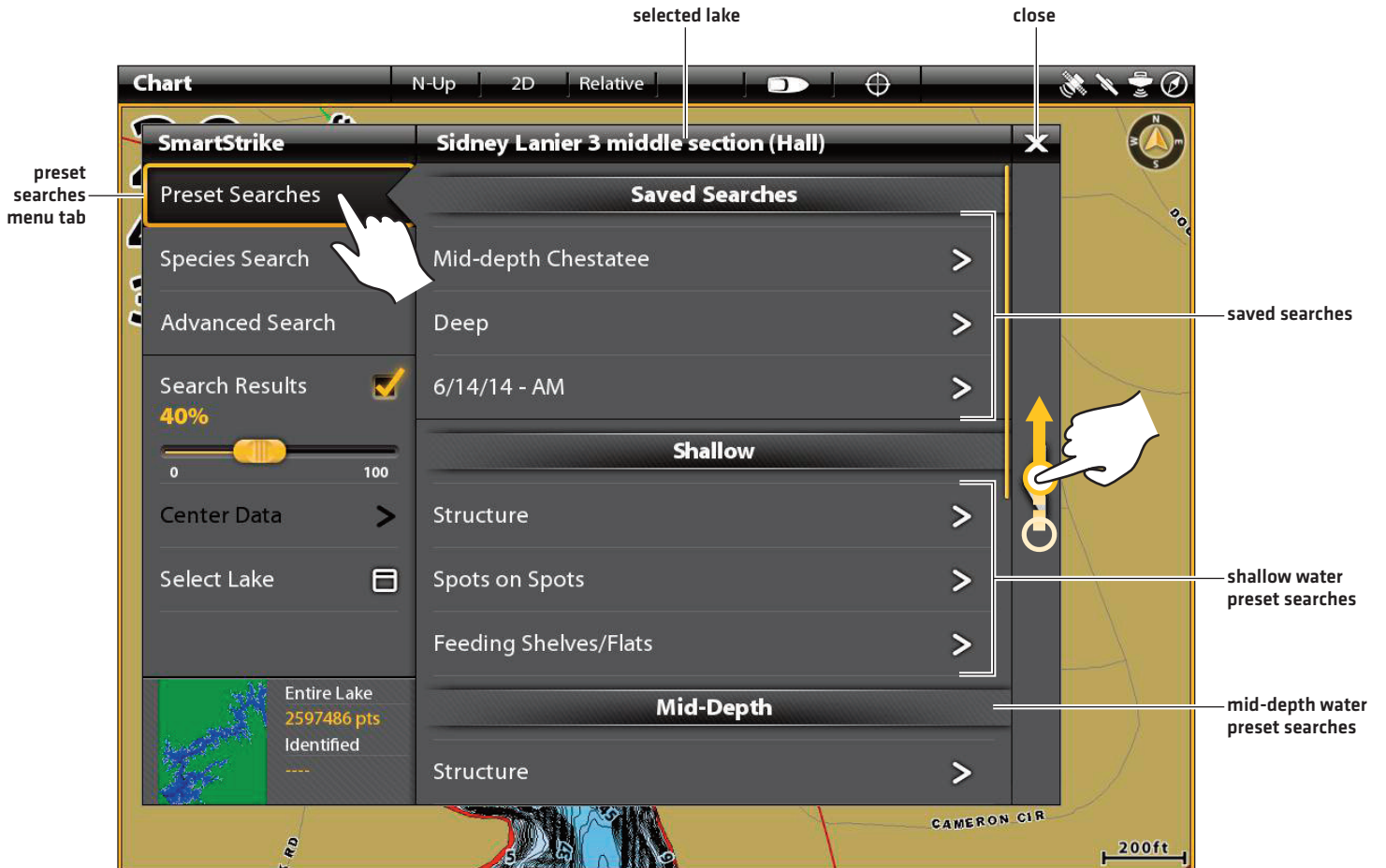


# SMARTSTRIKE PRESET SEARCHES

Use SmartStrike Preset Searches to select and execute a search with preselected search criteria based on depth and underwater structure [see *Preset Searches*], or a previously saved search [see *Saved Searches*].

The preset searches include preselected search settings [or search criteria], however, the settings can be customized. See *Preset Searches: Execute a Preset Search* for more information.

The Preset Searches Menu



## Preset Searches

SmartStrike Preset Searches include preselected search settings based on water depth and underwater structure. The search criteria is pre-selected, however, it can be customized before you execute the search.


The available Preset Searches will vary based on the selected lake. For example, if you select a lake where the deepest water is 25 feet, the deep water Preset Searches may not be available. Preset Searches that are unavailable will be grayed out in the menu.

### Preset Search Menu Options

See the table below for the available Preset Search options. See *Execute a Preset Search* for instructions on how to select and execute a Preset Search.



**NOTE:** The availability of Preset Searches will vary based on the currently selected lake.

Preset Search Depth Categories	Preset Search Menu Options
<b>Shallow</b> [approximately 0 - 15 feet [0 - 4.6 meters]]	<b>Structure:</b> Search for fish-attracting structure on the lake bottom, such as points, humps, wrecks, timber, rocks, creek beds, and drop-offs.
<b>Mid-Depth</b> [approximately 16 - 30 feet [4.9 - 9.1 meters]]	<b>Spots on Spots:</b> Search for structure on top of geographical variations on the lake bottom. For example, rocks or timber on a ledge, lip, or drop off.  <b>Feeding Shelves/Flats:</b> Search for underwater shelves or flats.
<b>Deep</b> [approximately 31- 45 feet [9.4 - 13.7 meters]]	 <b>NOTE:</b> The search criteria is pre-selected, however, it can be customized before you execute the search.
<b>Other</b>	Search for drop-offs or other structure at specific depths, such as deep weedline depth or thermocline depth. The search criteria is pre-selected, however, it can be customized before you execute the search.  The available options may vary based on the currently selected lake.

## Saved Searches

See the instructions below to select and execute a saved search. For more information about saving searches, or editing or deleting a saved search, see *Managing your SmartStrike Searches*.

### Execute a Saved Search

#### Touch Screen

1. From the SmartStrike menu, tap **Preset Searches**.
2. Under Saved Searches, select a search name.  
The Advanced Search tab will automatically open.
3. **Edit [optional]**: Tap a menu option to open the submenu. Edit settings or select additional settings as needed. Tap the Back icon to return to the Advanced Search menu.
4. **Save or Clear [optional]**: Select Save Criteria to save the new search settings. To delete the currently selected settings, select Clear Criteria.
5. **Search**: To start the search, select **Execute Search**.

The SmartStrike menu will collapse to show the Chart View.

If you cannot locate the search results on the display, see *SmartStrike Search Results*.

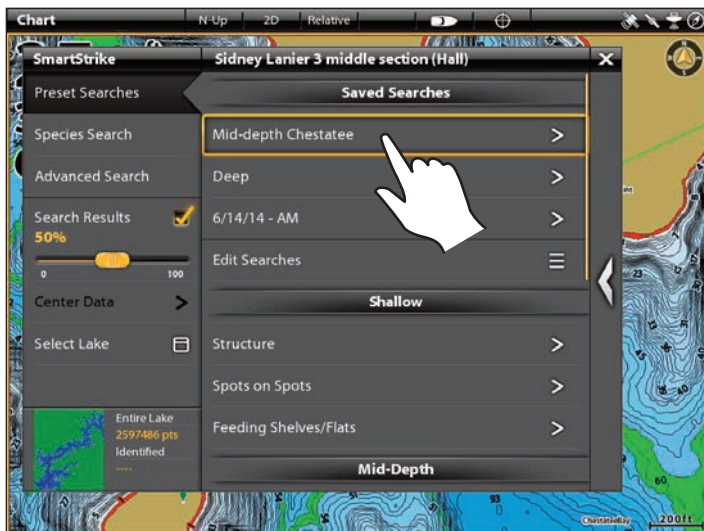
#### Keypad

1. From the SmartStrike menu, use the Joystick to select **Preset Searches**. Press the ENTER key.
2. Under Saved Searches, use the Joystick to select a search name. Press the ENTER key.  
The Advanced Search tab will automatically open.
3. **Edit [optional]**: Select a menu option and press the ENTER key to open the submenu. Edit settings or select additional settings as needed. Press the EXIT key to return to the Advanced Search menu.
4. **Save or Clear [optional]**: Select Save Criteria to save the new search settings. To delete the currently selected settings, select Clear Criteria.
5. **Search**: To start the search, select **Execute Search** and press the ENTER key.

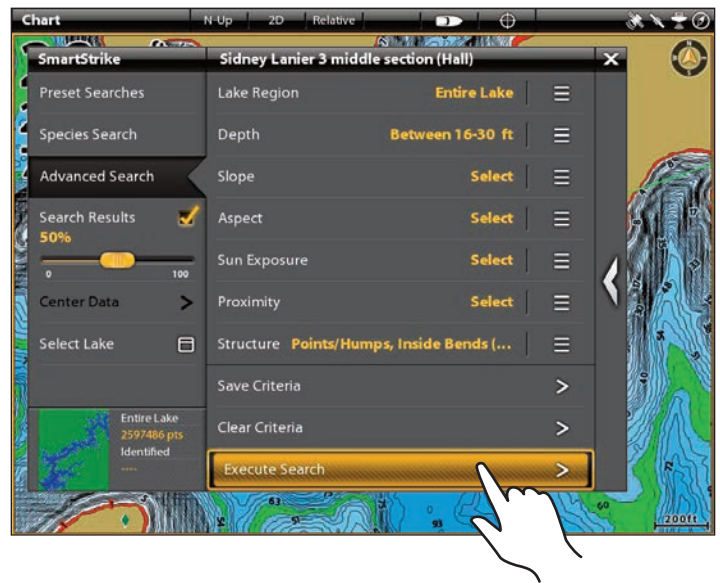
The SmartStrike menu will collapse to show the Chart View.

If you cannot locate the search results on the display, see *SmartStrike Search Results*.

Selecting a Saved Search

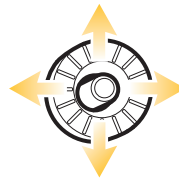


Executing the Selected Saved Search



Tap to Open and Select

OR



Select



Open and Confirm



## Execute a Preset Search

Use the following instructions to select and execute a Preset Search.

### 1. Select the Preset Search

---

#### Touch Screen

1. From the SmartStrike menu, tap the **Preset Searches** menu tab.
2. Under the determined depth category [Shallow, Mid-Depth, Deep, or Other], select a menu option.

The Advanced Search tab will automatically open.

#### Keypad

1. From the SmartStrike menu, use the Joystick to select the **Preset Searches** menu tab. Press the ENTER key.
2. Under the determined depth category [Shallow, Mid-Depth, Deep, or Other], use the Joystick to select a menu option. Press the ENTER key.

The Advanced Search tab will automatically open.



**NOTE:** If a menu option is grayed out, the search is not available for the selected lake.

### 2. Edit the Preset Search Settings (optional)

---

Review the selected search settings, which are displayed in yellow next to the menu option name [see the illustration *Executing a Preset Search*]. Use the instructions below to edit the selected settings or select additional settings.

#### Touch Screen

1. Tap a menu option to open the submenu.
2. Edit the preselected settings or select additional settings as needed.
3. Tap the Back icon to return to the Advanced Search menu.
4. **Save [optional]:** Select Save Criteria to save the new search settings [see *Managing your SmartStrike Searches*].

**Clear [optional]:** To delete the currently selected search settings, select Clear Criteria.

#### Keypad

1. Use the Joystick to select a menu option. Press the ENTER key to open the submenu.
2. Edit the preselected settings or select additional settings as needed.
3. Press the EXIT key to return to the Advanced Search menu.
4. **Save [optional]:** Select Save Criteria to save the new search settings. Press the ENTER key [see *Managing your SmartStrike Searches*].

**Clear [optional]:** To delete the currently selected search settings, select Clear Criteria. Press the ENTER key.

### 3. Execute the Search

---

#### Touch Screen

1. Tap **Execute Search**.

The SmartStrike menu will collapse to show the search results in Chart View.

If you cannot locate the search results on the display, see *SmartStrike Search Results*.

#### Keypad

1. Select **Execute Search** and press the ENTER key.

The SmartStrike menu will collapse to show the search results in Chart View.

If you cannot locate the search results on the display, see *SmartStrike Search Results*.

## Selecting a Preset Search

preset searches menu tab

Under the chosen depth category (shallow, mid-depth, deep, or other), select a preset search.

SmartStrike Sidney Lanier 3 middle section (Hall)

Preset Searches

Species Search

Advanced Search

Search Results 100%

Center Data

Select Lake

Entire Lake 259/486 pts Identified 3659

Saved Searches

Edit Searches

Shallow

Structure

Spots on Spots

Feeding Shelves/Flats

Mid-Depth

Structure

Spots on Spots

Deep

134 135 0 00:00:00:00

## Executing a Preset Search

After selecting the preset search, the Advanced Search menu will open.

The currently selected search settings are displayed in yellow next to the menu option.

To edit the preset search settings, select a menu option to open the submenu and set additional settings.

save search settings

clear search settings

execute search

SmartStrike Sidney Lanier North (Hall)

Preset Searches

Species Search

Advanced Search

Search Results 100%

Center Data

Select Lake

Entire Lake 1680370 pts Identified 222

Lake Region Entire Lake

Depth Between 0-15 ft

Slope Select

Aspect Select

Sun Exposure Select

Proximity Select

Structure Points/Humps, Inside Bends (...)

Save Criteria

Clear Criteria

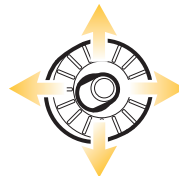
Execute Search

49°T 4.6mi N 34°18.206' W 83°53.504'



Tap to Select

OR



Select



Confirm

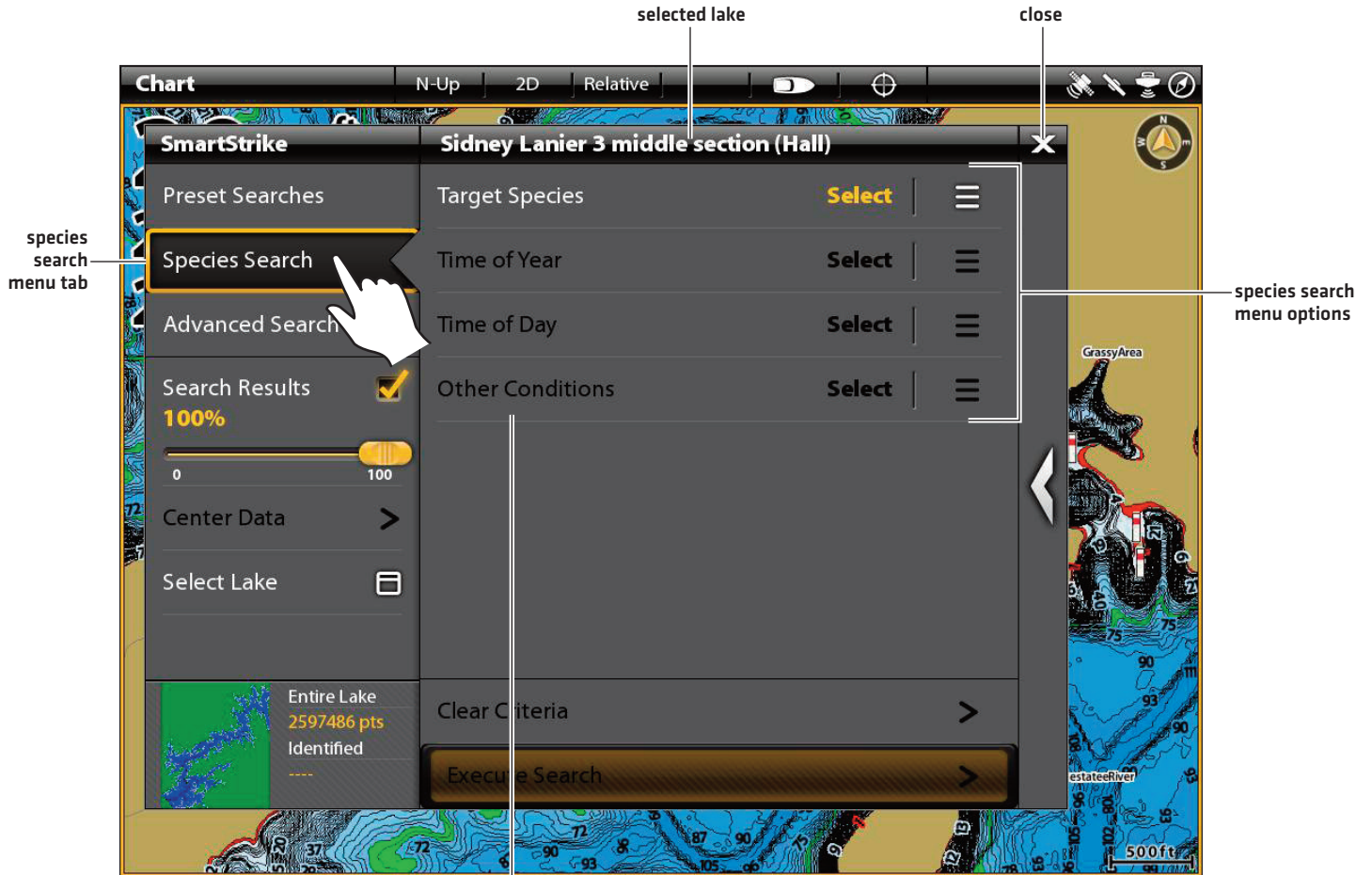
# SMARTSTRIKE SPECIES SEARCH

Use Species Search to search the selected lake for a specific fish species. The available fish species will vary based on the currently selected lake.



**NOTE:** Species Searches cannot be saved.

## Species Search Menu



Other Conditions and Time of Day will be grayed out in the menu until the Target Species and Time of Year have been selected.

## Species Search Menu Options

See the table below for the available Species Search menu options. See *Execute a Species Search* for instructions on how to execute a Species Search.

The available menu options will vary based on the currently selected lake.



**NOTE:** Other Conditions and Time of Day will be grayed out in the Species Search menu until the Target Species and Time of Year have been selected.

Species Search Menu Options	
<b>Target Species</b>	Select the fish species you want to search the lake for. The available options will vary based on the currently selected lake.
<b>Time of Year</b>	Select the current time of year. The available options will vary based on the currently selected lake and/or selected target species.
<b>Time of Day</b>	Select the current time of day. The available options may vary based on the currently selected lake, target species, and time of year.
<b>Other Conditions</b>	Select the current weather conditions, water conditions, etc. The available options may vary based on the currently selected lake, target species, time of year, and time of day.

## Execute a Species Search

Use the following instructions to execute a Species Search.

### 1. Select the Fish Species

Use the following instructions to select the fish species for your search. The available fish species will vary based on the currently selected lake.

#### Touch Screen

1. From the SmartStrike menu, tap the Species Search tab.
2. Tap **Target Species** to open the submenu.
3. Select a fish species.

The submenu will automatically close and return to the Species Search menu.

#### Keypad

1. Use the Joystick to select the Species Search tab.
2. Press the ENTER key.
3. Use the Joystick to select **Target Species** and press the ENTER key.
4. Select a fish species and press the ENTER key.

The submenu will automatically close and return to the Species Search menu.

## 2. Select the Time of Year

---

### Touch Screen

1. From the Species Search menu, tap **Time of Year** to open the submenu.
2. Select the current season.

The submenu will automatically close and return to the Species Search menu.

### Keypad

1. From the Species Search menu, select **Time of Year**.
2. Press the ENTER key to open the submenu.
3. Select the current season and press the ENTER key.

The submenu will automatically close and return to the Species Search menu.

## 3. Select Additional Settings (optional)

---

### Touch Screen

1. From the Species Search menu, tap **Time of Day** and/or **Other Conditions** to open the submenu.
2. Select additional settings as needed.
3. Tap the back arrow to return to the Species Search menu.

### Keypad

1. From the Species Search menu, select **Time of Day** and/or **Other Conditions**.
2. Press the ENTER key to open the submenu.
3. Select additional settings as needed.
4. Press the EXIT key to return to the Species Search menu.

## 4. Execute the Search

---

### Touch Screen

1. Tap **Execute Search**.

The SmartStrike menu will collapse to show the search results in Chart View.

If you cannot locate the search results on the display, see **SmartStrike Search Results**.

**Clear Criteria:** Tap Clear Criteria to remove the selected settings.

### Keypad

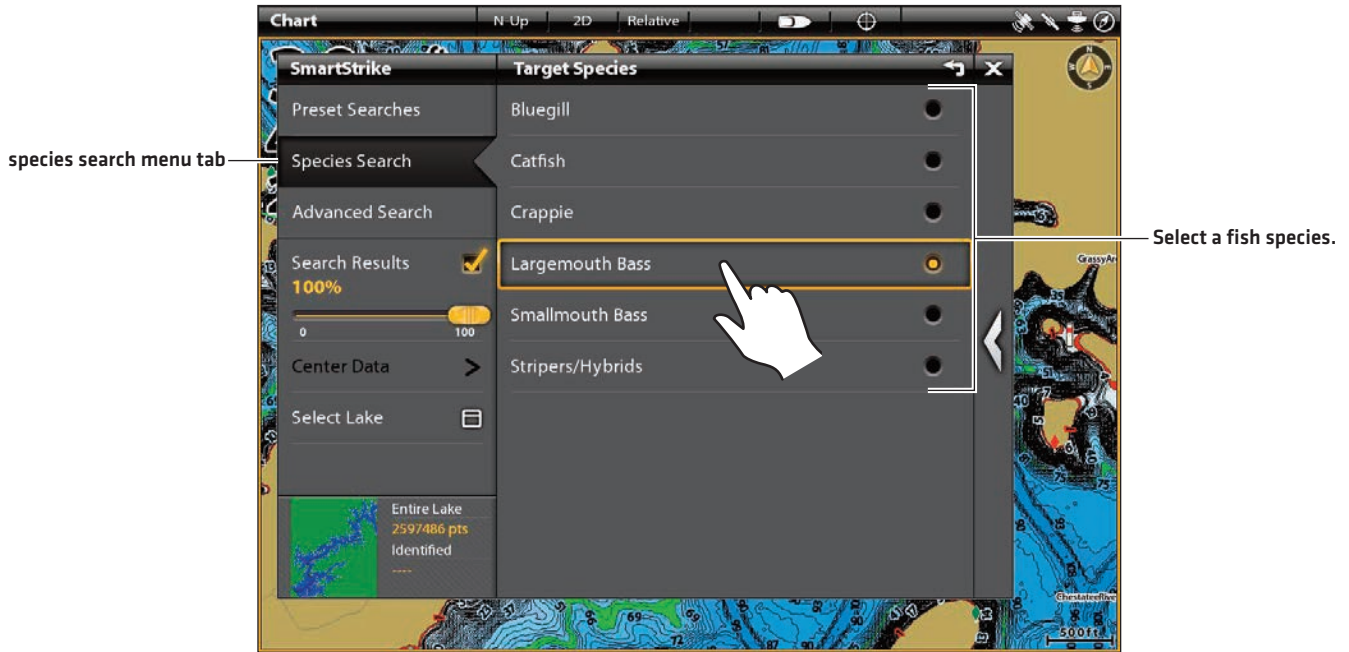
1. Select **Execute Search** and press the ENTER key.

The SmartStrike menu will collapse to show the search results in Chart View.

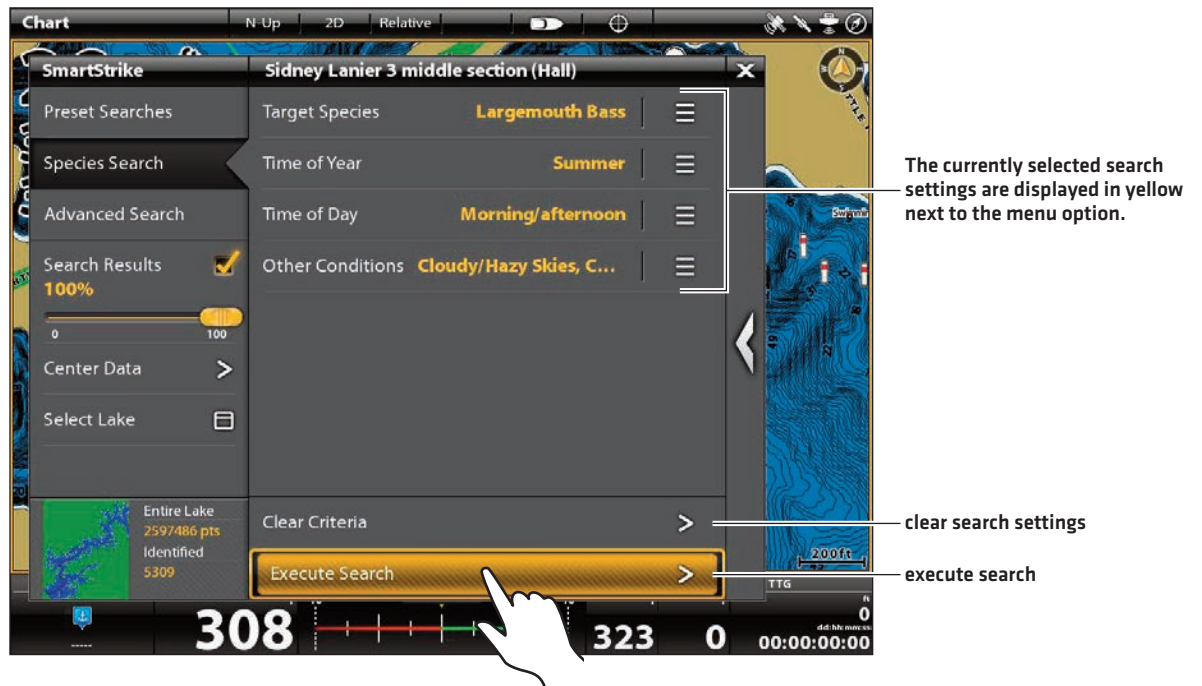
If you cannot locate the search results on the display, see **SmartStrike Search Results**.

**Clear Criteria:** Select Clear Criteria and press the ENTER key to remove the selected settings.

## Selecting the Fish Species

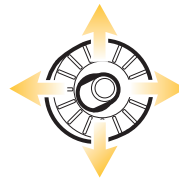


## Executing a Species Search



Tap to Select

OR



Select



Confirm

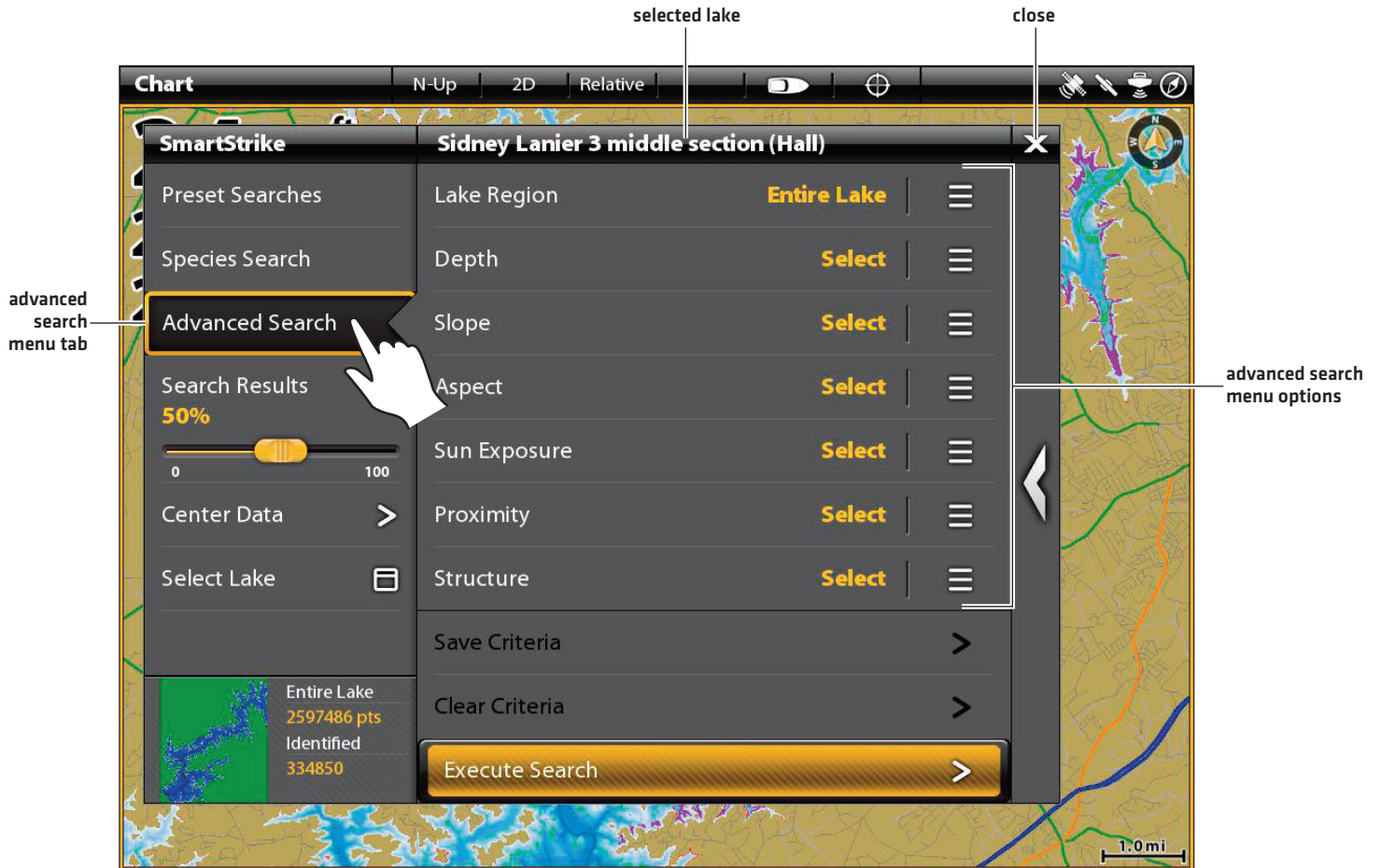


# SMARTSTRIKE ADVANCED SEARCH

Use Advanced Search to select your own search criteria.

If you selected a **Preset Search**, the Advanced Search menu will automatically open after the Preset Search selection. This allows you to edit or add to the Preset Search settings [optional]. See *SmartStrike Preset Searches* for more information.

Advanced Search Menu



## Advanced Search Menu Options

See the table below for the available Advanced Search menu options. See **Execute an Advanced Search** for instructions on how to select settings and execute an Advanced Search.

The available settings and values for some menu options will vary based on the selected lake. For example, the maximum depth value displayed under Depth will change to reflect the maximum depth of the currently selected lake.

Advanced Search Menu Options	
<b>Lake Region</b>	<p>Select the areas of the lake where you want to focus your search. For example, select the entire lake or inlets, bays, and/or coves only.</p> <p>The available options may vary based on the currently selected lake.</p>
<b>Depth</b>	<p>Select specific depth values for your search. For example, set a depth range that is between 15 and 20 feet.</p> <p>The depth values will vary based on the currently selected lake.</p> <p>To change the units of measurement, go to Settings &gt; General &gt; Units &gt; Depth.</p>
<b>Slope</b>	<p>Select areas of the lake with flat, gradual, moderate, and/or sharp slopes.</p> <p>The available options may vary based on the currently selected lake.</p>
<b>Aspect</b>	<p>Select a direction or position of the lake for your search, such as Northeast.</p> <p>The available options may vary based on the currently selected lake.</p>
<b>Sun Exposure</b>	<p>Select the sunny or shady areas [exposure levels] of the lake to search. When an exposure level has been selected, you may also select the current season and time of day.</p> <p>The available options may vary based on the currently selected lake.</p>
<b>Proximity</b>	<p>Set the proximity to search a specific distance from a lake feature. For example, you can set the proximity to search less than 20 feet from the shoreline.</p> <p>The available options may vary based on the currently selected lake.</p> <p>To change the units of measurement, go to Settings &gt; General &gt; Units &gt; Distance [Long] or Distance [Short].</p>
<b>Structure</b>	<p>Set a search that focuses on specific under water structure, such as ledges and drop-offs.</p> <p>The available options may vary based on the currently selected lake.</p>



## Execute an Advanced Search

Use the following instructions to execute an Advanced Search.

### 1. Select the Search Settings

---

#### Touch Screen

1. From the Advanced Search menu, tap a menu option to open the submenu.
2. Select search settings as follows:  
**Pick List or Check Box:** Tap the check box.  
**Slider:** Press and drag the slider.
3. Tap the Back icon to return to the Advanced Search menu.
4. **Repeat:** Repeat steps 2 and 3 to select additional menu options and settings.

#### Keypad

1. From the Advanced Search menu, use the Joystick to select a menu option. Press the ENTER key to open the submenu.
2. Select settings as follows:  
**Pick List or Check Box:** Use the Joystick to select the setting and press the ENTER key.  
**Slider:** Use the Joystick to select the setting and turn the Rotary dial.
3. Press the EXIT key to return to the Advanced Search menu.
4. **Repeat:** Repeat steps 2 and 3 to select additional menu options and settings.

### 2. Save or Delete the Search Settings (optional)

---

#### Touch Screen

1. **Save [optional]:** Select Save Criteria to save the search settings [see *Managing your SmartStrike Searches*].  
**Clear [optional]:** To delete the selected search settings, select Clear Criteria.

#### Keypad

1. **Save [optional]:** Select Save Criteria to save the search settings. Press the ENTER key [see *Managing your SmartStrike Searches*].  
**Clear [optional]:** To delete the selected search settings, select Clear Criteria. Press the ENTER key.

### 3. Execute the Search

---

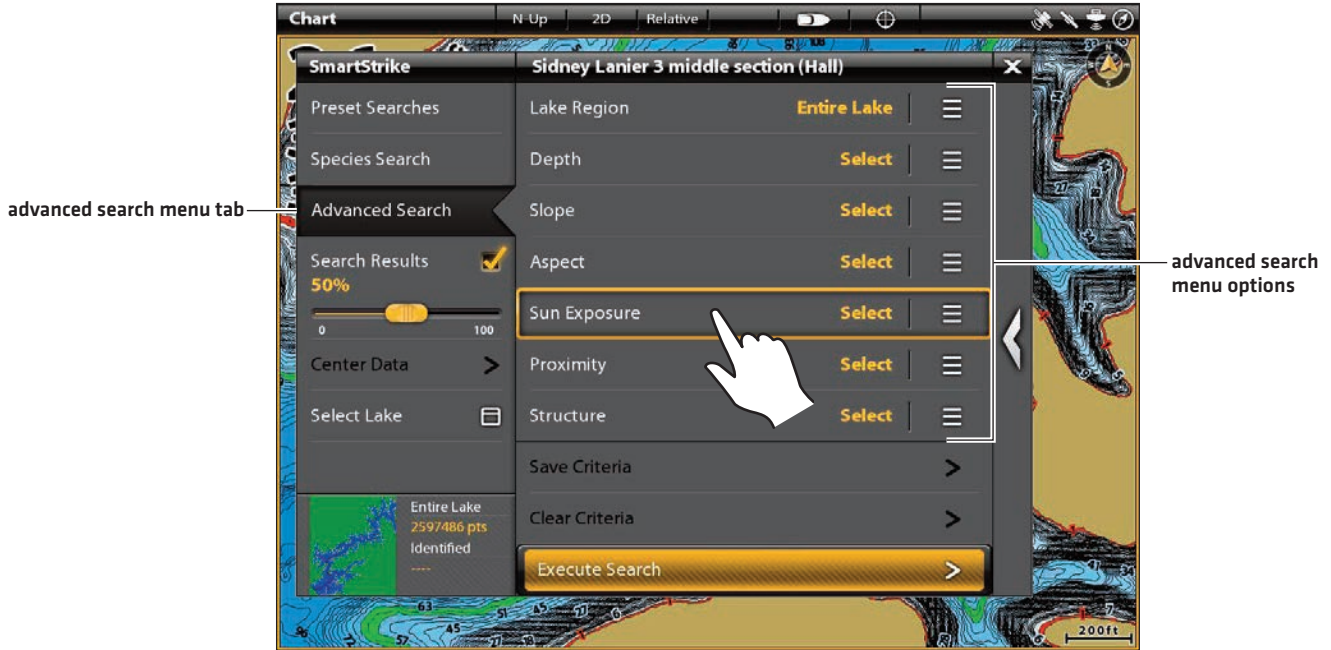
#### Touch Screen

1. Tap **Execute Search**.  
The SmartStrike menu will collapse to show the search results in Chart View.  
If you cannot locate the search results on the display, see *SmartStrike Search Results*.

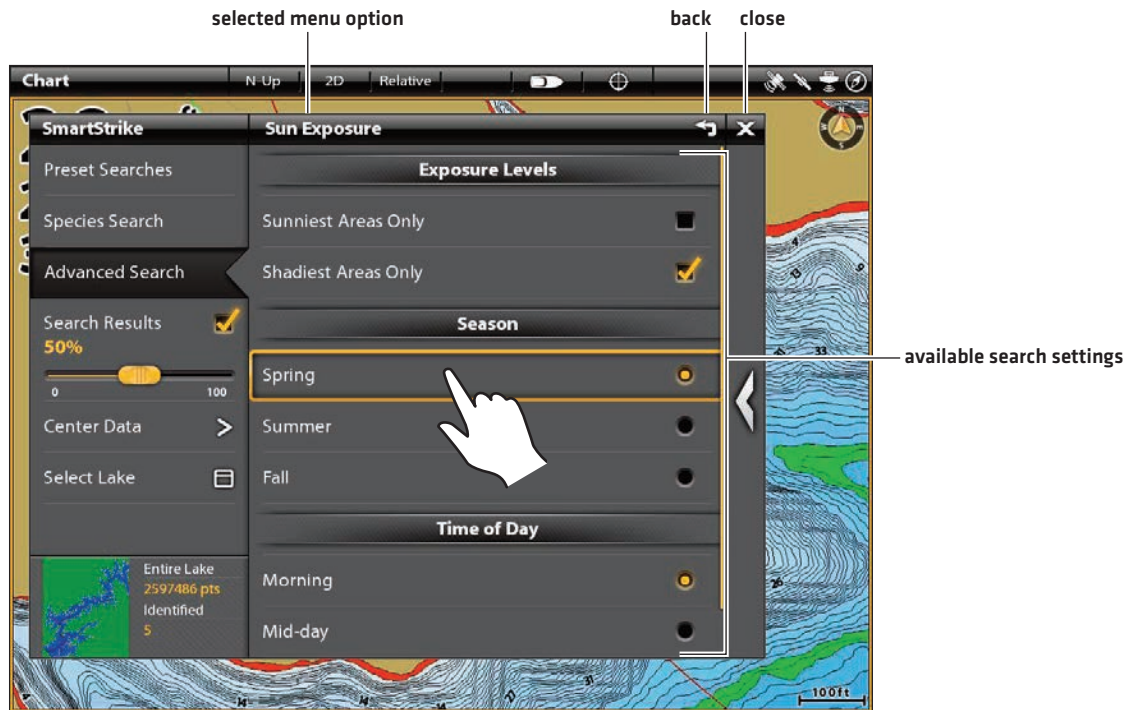
#### Keypad

1. Select **Execute Search** and press the ENTER key.  
The SmartStrike menu will collapse to show the search results in Chart View.  
If you cannot locate the search results on the display, see *SmartStrike Search Results*.

## Selecting a Menu Option to Open the Submenu



## Selecting Search Settings



Tap to Select

OR



Select



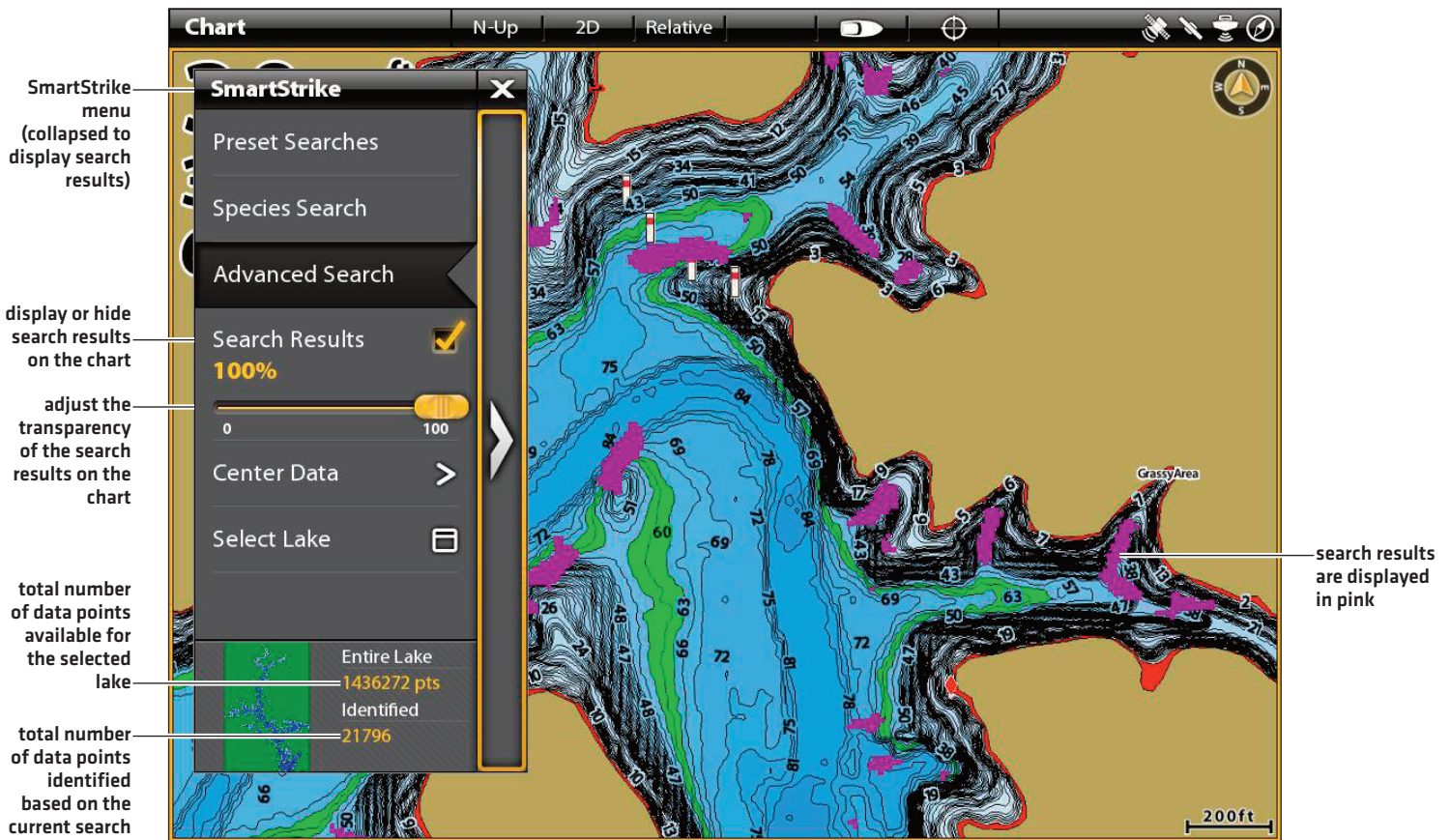
Confirm

# SMARTSTRIKE SEARCH RESULTS

After executing a SmartStrike search, the search results will be displayed in pink in the Chart View. See the illustration below.

You can display or hide search results and adjust the transparency of the search results from the SmartStrike main menu. See below for instructions.

SmartStrike Menu with Search Results Displayed on the Chart View



## Adjust the Search Results Display

### Touch Screen

1. Under the SmartStrike main menu, select **Search Results**.
2. **On:** To display the search results, tap the check box to add the check mark.  
**Off:** To hide the search results, tap the check box to remove the check mark.
3. **Adjust Transparency:** To adjust the transparency of the search results in Chart View, press and drag the slider to set the transparency setting.

### Keypad

1. Under the SmartStrike main menu, use the Joystick to select **Search Results**.
2. **On:** To display the search results, press the ENTER key to add the check mark.  
**Off:** To hide the search results, press the ENTER key to remove the check mark.
3. **Adjust Transparency:** To adjust the transparency of the search results in Chart View, turn the Rotary dial to set the transparency setting.

## Center the Search Results on the Display

To locate search results on the Chart View, select Center Data. Depending on the number of identified search results and the size of the selected lake, the chart scale will automatically adjust to fit all identified search results on the display.

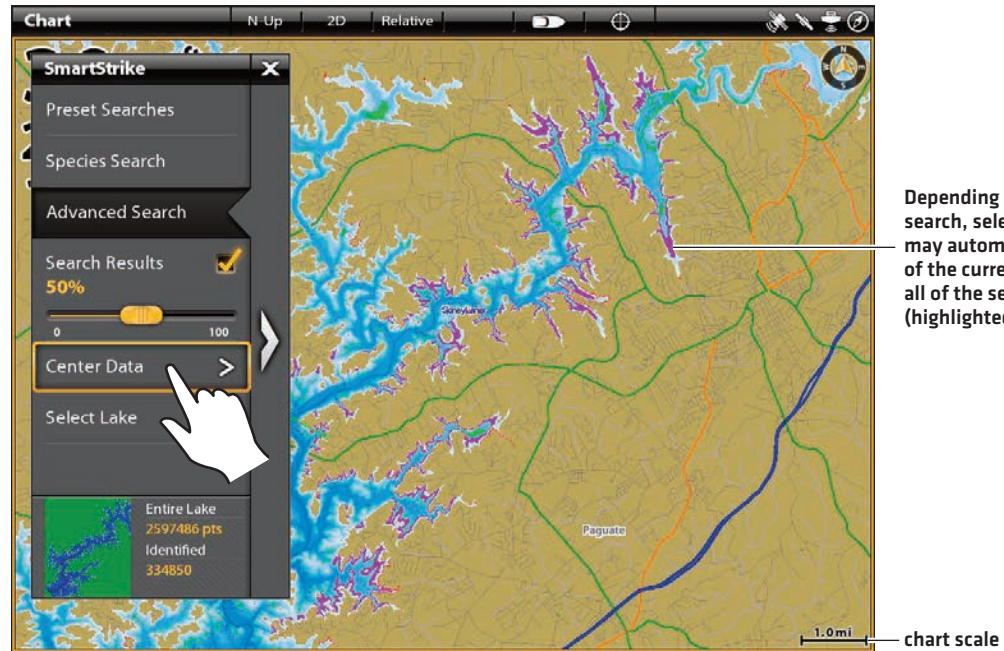
1. Under the SmartStrike main menu, tap **Center Data**.

**OR**

Use the Joystick to select **Center Data** and press the ENTER key.

The chart scale will automatically adjust to fit all identified search results on the display.

### Centering SmartStrike Search Results in Chart View

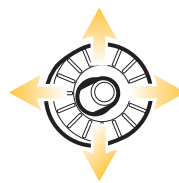


Depending on the executed search, selecting Center Data may automatically zoom out of the current view to display all of the search results (highlighted in pink).



Tap to Select

**OR**



Select



Confirm



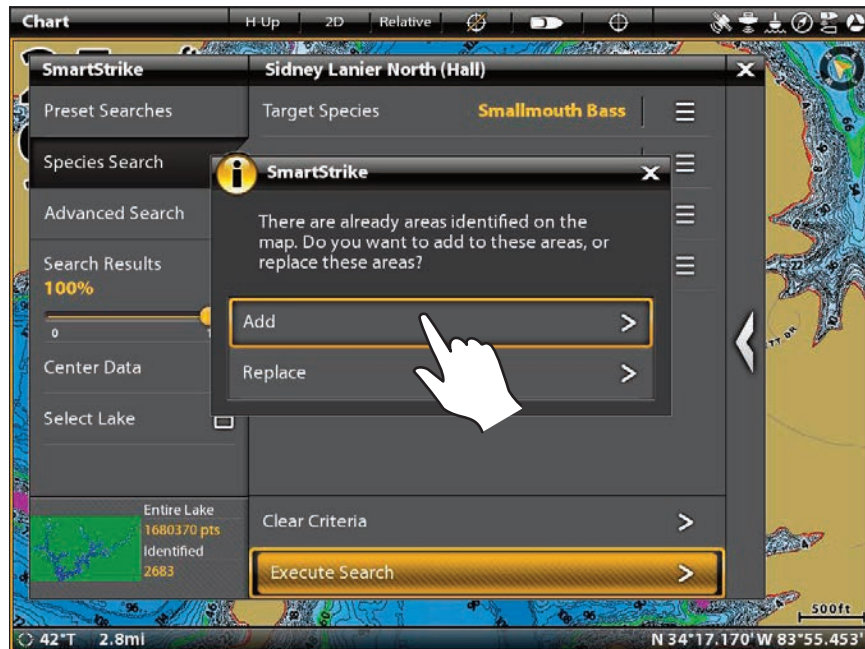
## Executing Multiple Searches: Add or Replace Search Results

When executing multiple searches, you can choose to either replace the previous search results with the new search results or combine the new search results and the existing search results displayed on screen. See the illustration below.

1. **Add:** Select Add to display the new search results in addition to the previous search results.

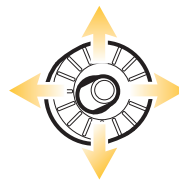
**Replace:** Select Replace to remove the previous search results and replace them with the new search results.

### Adding to the Previous Search Results



Tap to Select

OR



Select



Confirm

# CHANGING THE SELECTED LAKE

You will be prompted to select the lake whenever you power on your unit and open the SmartStrike main menu. To change the selected lake during operation, use the instructions below.

1. Under the SmartStrike main menu, tap **Select Lake**.

OR

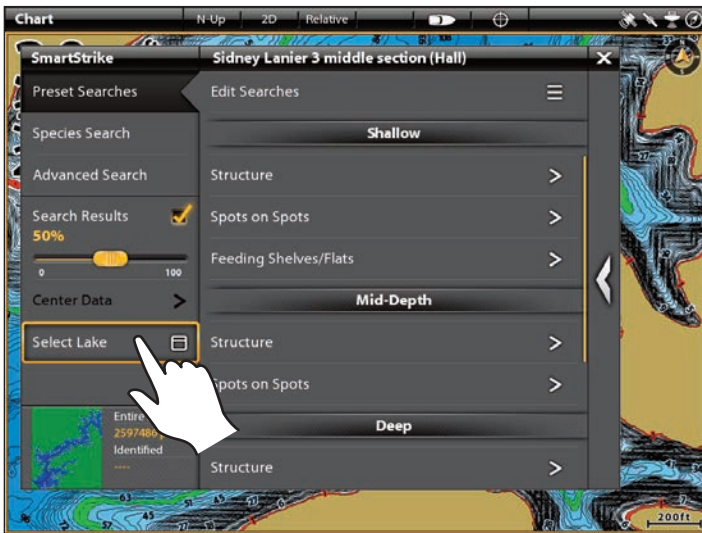
Use the Joystick to select **Select Lake** and press the ENTER key.

2. Swipe the screen with one finger to scroll through the list of lake names. Tap the lake name to select.

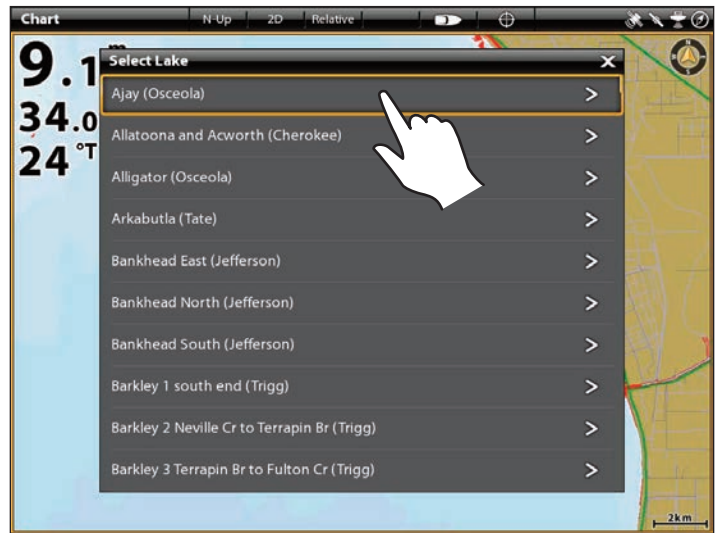
OR

Use the Joystick to scroll through the list of lake names. Select a lake name and press the ENTER key.

Opening the Select Lake Menu

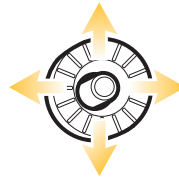


Selecting the Lake Name



Tap to Select

OR



Select



Confirm

# MANAGING YOUR SMARTSTRIKE SEARCHES

See the following sections for information and instructions on saving, editing, and deleting your SmartStrike searches.

 **NOTE:** Species Searches cannot be saved.

## Save a SmartStrike Search


Save your customized Preset Searches or Advanced Searches using the instructions in this section. You can save up to 10 searches. Species Searches cannot be saved.

1. After selecting the search settings, tap **Save Criteria**.

OR

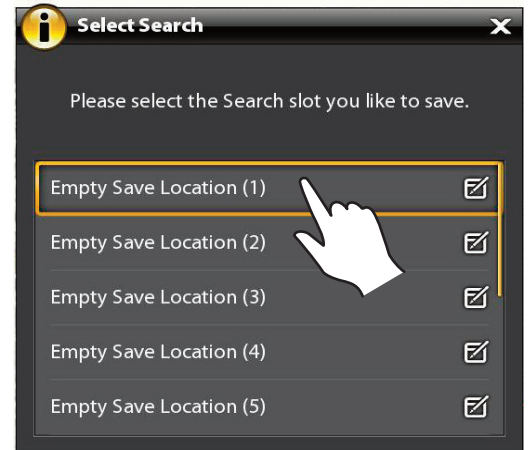
Use the Joystick to select **Save Criteria** and press the ENTER key.

2. From the Select Search dialog box, select an available search slot to save the search to. Tap, or press the ENTER key, to select. [See the illustration *Selecting a Saved Search Slot*].

 **NOTE:** You can save up to 10 SmartStrike searches.

3. Use the on-screen keyboard to enter the search name.

### Selecting a Saved Search Slot

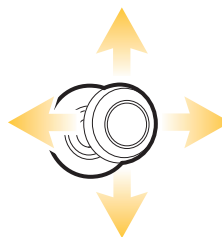


### Using the On-Screen Keyboard to Enter the Search Name



Tap to Select a Character

OR



Highlight a Character



Press to Select the Character

## Edit a Search Name or Delete a Saved Search

Use the following instructions to edit a saved search name or delete a saved search.

### Open the Edit Searches Menu

1. Open the SmartStrike main menu.
2. Select the Preset Searches menu.
3. Under Saved Searches, tap **Edit Searches** to open the submenu.

OR

Use the Joystick to select **Edit Searches** and press the ENTER key to open the submenu.

### Edit Search Name

1. From the Edit Searches menu, select **Edit Search Name**. Tap, or press the ENTER key, to select.
2. Select the Saved Search. Tap, or press the ENTER key, to open.
3. Use the on-screen keyboard to rename the search. See the illustration *Using the On-Screen Keyboard to Enter the Search Name*.

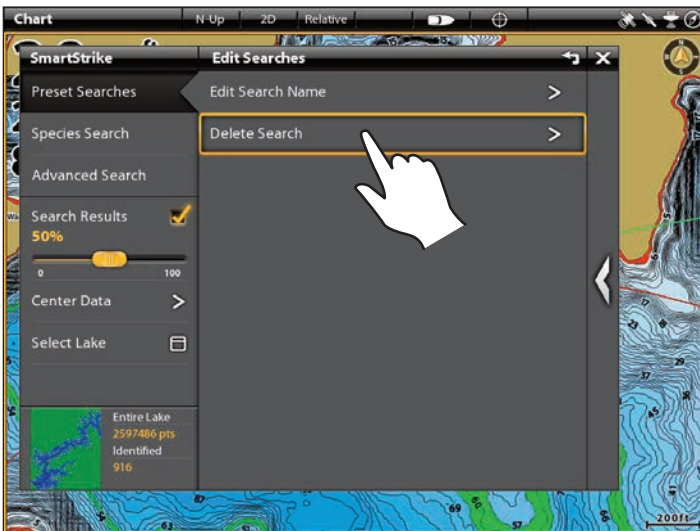
### Delete a Saved Search

1. From the Edit Searches menu, select **Delete Search**. Tap, or press the ENTER key, to select.
2. Select the Saved Search you want to delete. Tap, or press the ENTER key, to delete it.

### Delete All Saved Searches

1. From the Edit Searches menu, select **Delete Search**. Tap, or press the ENTER key, to select.
2. **Delete All:** To delete all saved searches, select Delete All. Tap, or press the ENTER key, to select.
3. A confirmation box will display on-screen. Select **Confirm** to delete all saved searches.

Using the Touch Screen to Open the Delete Search Submenu



Using the Touch Screen to Delete a Saved Search

