

Trolling Motor Mounted Transducer with Mount Assembly

Thank You

Thank you for choosing Humminbird®, the #1 name in fishfinders. Humminbird® has built its reputation by designing and manufacturing top-quality, thoroughly reliable marine equipment. Genuine Humminbird® accessories offer the opportunity to upgrade and expand the capabilities of your Humminbird® product.

NOTE: Your transducer may not look exactly like the transducer shown in the illustrations, but it will mount in exactly the same way.

Your Humminbird® accessory is designed for trouble-free use in even the harshest marine environment. In the unlikely event that your Humminbird® accessory does require repairs, we offer an exclusive Service Policy - free of charge during the first year after purchase, and available at a reasonable rate after the one-year period. For complete details, see the Warranty section included in this manual.

Installation Overview

Following are instructions for the installation of this accessory. Before you start installation, we encourage you to read these instructions carefully in order to get the full benefit from your Humminbird® accessory.

In addition to the hardware supplied with your transducer, you will need various hand tools.

Installation

The trolling motor transducer is designed to mount on the trolling motor of your boat. All hardware needed for installation and operation of this Humminbird® accessory is either included with this accessory or came with your original transducer. The trolling motor mounted transducer allows you to gather sonar information from the point on the boat closest to where you are fishing. It is important that you properly orient the transducer housing in the direction of travel of the trolling motor to ensure an accurate depiction of the terrain under your boat.

The trolling motor mounted transducer will fit any standard trolling motor housing. Some users install this transducer in conjunction with a switch so that the standard transducer can be used for high-speed operation, and the trolling motor transducer can be used while trolling.

1. Attaching the Transducer

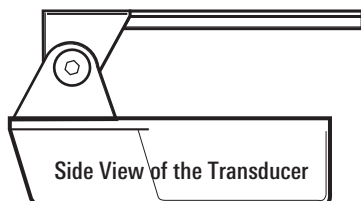


WARNING! Before attaching the transducer to the trolling motor, make certain that the motor is disconnected from all sources of electrical power.

CAUTION: Before attaching the transducer to the trolling motor, make sure that the trolling motor is properly secured to the boat and will not shift during transducer installation.

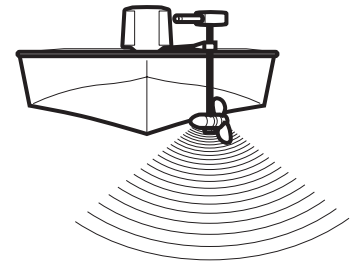
1. Attach the transducer to the bracket using the hardware provided and refer to the illustration that matches your transducer type (*transducer illustrations continue on next page*).

NOTE: If you purchased the AD-STM or AD XTM 9 accessory, you will need to use the hardware that originally came with the transducer to attach the transducer to the bracket.

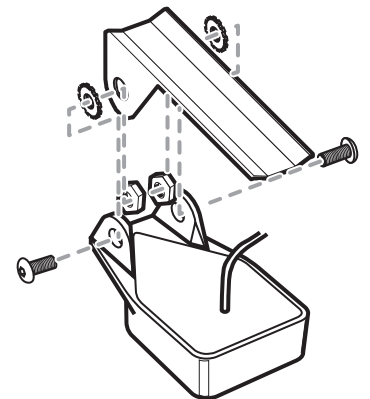


*Mounting Bracket
should be parallel
to the Transducer*

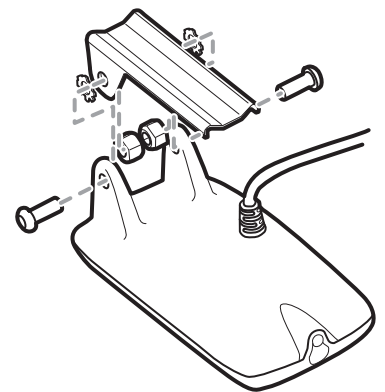
Trolling Motor Mount Installation



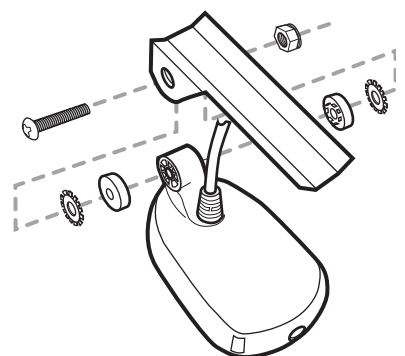
Assembling the Metal Mounting Bracket



Assembling the Metal Mounting Bracket



Assembling the Metal Mounting Bracket



Trolling Motor Mounted Transducer with Mount Assembly

- Position the transducer on the underside of the motor housing with the transducer end containing the mounting ears or mounting knuckle oriented away from the propeller.

NOTE: Your transducer may not look exactly like the transducer shown in the illustration, but it will mount in exactly the same way.

- Insert the hose clamp around the adapter bracket on the top of the transducer and pull the two ends up around the motor housing. As you tighten the hose clamp, check to make sure that the transducer is properly aligned with the motor housing.
- After tightening the hose clamp, make sure that the transducer is securely attached to the motor housing and will not slip off while in operation.

2. Routing the Cable

The transducer cable has a low profile connector which must be routed to the point where the fishfinder is mounted. There are several ways to route the transducer cable to the area where the control head is installed.

NOTE: Your boat may have a pre-existing wiring channel or conduit that you can use for the transducer cable.

- Unplug the other end of the transducer cable from the control head. Make sure that the cable is long enough to accommodate the planned route.

CAUTION! Do not cut or shorten the transducer cable, and try not to damage the cable insulation. Route the cable as far as possible from any VHF radio antenna cables or tachometer cables to reduce the possibility of interference. If the cable is too short, extension cables are available to extend the transducer cable up to a total of 50'.

- Route the transducer cable around the side of the motor housing and secure it to the motor shaft using the plastic cable ties provided.

NOTE: As you route the cable from the trolling motor to the boat, be sure to leave sufficient slack in the cable to allow for full movement and retraction of the trolling motor during normal operation.

- Route the transducer cable to the fishfinder.

3. Connecting the Cable

Insert the transducer cable into the appropriate terminal slot. The cable connectors are labeled, and there are corresponding labels on the cable holder on the rear of the fishfinder. The slots are keyed to prevent reversed installation, so be careful not to force the connector into the holder.

Refer to your manual and/or control head installation guide for the correct procedure for installing the cable connectors to the fishfinder.

- Plug the other end of the transducer cable back into the control head connection holder.

4. Test and Finish the Installation

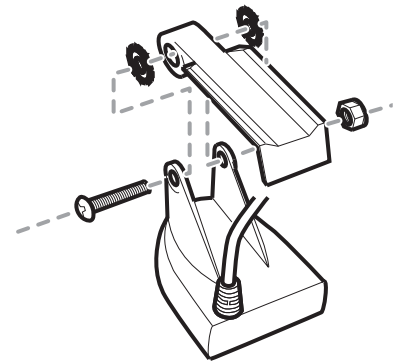
When you have installed both the fishfinder control head and the trolling motor transducer, and have routed all the cables, you must perform a final test to verify installation. Testing should be performed with the boat in the water, although you can initially confirm basic operation with the boat out of the water.

NOTE: Make sure the trolling motor is re-connected to the power source before performing this procedure.

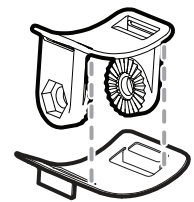
- Press POWER once to turn the control head on. If the unit does not power-up, make sure that the connector holder is fully seated in the receptacle and that power is available.
- If all connections are correct and power is available, the Humminbird® control head will enter Normal operation.

NOTE: The transducer must be submerged in water for reliable transducer detection.

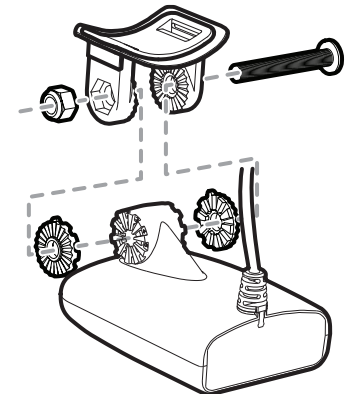
Assembling the AD-STM



1. Assembling the AD XTM9 Bracket



2a. Assembling the AD XTM9



2b. Assembling the AD XTM9

