



Simply
Advanced.™



WIDE RANGE OF BEZEL OPTIONS

Round, Square,
Double, Triple & Swivel
Options
Spring Mount
Installation

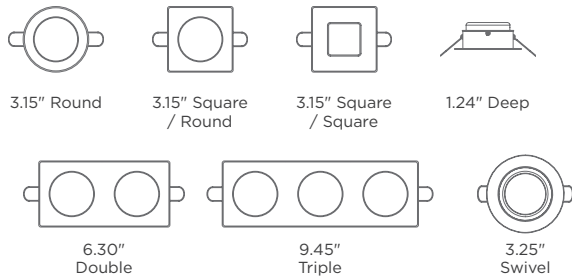
PERFECT
HALOGEN
REPLACEMENT
SIMPLE
TO INSTALL



Apeiron™ A1110

DIMMABLE MARINE-GRADE LED DOWNLIGHT

Since its introduction nearly a decade ago, Apeiron is the undisputed go-to marine LED down light. Apeiron fixtures offer the perfect blend of technical sophistication and elegance. Now with a swivel option.



FEATURES

Advanced Optics

Even light, with no LED "dots" or pixilation, provides the halogen look without the heat and 1/5th the power load.

Dimmable

Using our LightLink™ Dimmers, experience simple LED dimming at the push of a button.

Rugged & Waterproof

With stainless steel construction and a PVD Titanium-Coated or Mil-Spec Powder-Coated stainless steel trim bezel, expect industry-leading fit and finish that will last. IP67 waterproof rated*.

Simple to Install

Convenient spring clip design makes installation fast and easy.

*IP67 rated. Not for use in submersible applications.



Typical Applications

- General Lighting
- Soffit
- Pilot House
- Mezzanine
- Hardtop

Quick Specs

4.5W	Power
106	Lumen Output Typ.
120°	Beam Angle Fixed
60°	Beam Angle Swivel

LED Color

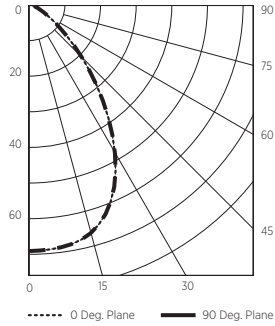
- 3000°K Warm White
- 6500°K Cool White

Finish Color

- Polished Chrome (PVD TITANIUM)
- Polished Gold (PVD TITANIUM)
- Brushed Nickel (PVD TITANIUM)
- White (MIL-SPEC POWDER COATED)
- Off-White (MIL-SPEC POWDER COATED)
- Black (MIL-SPEC POWDER COATED)

PHOTOMETRICS

APEIRON (A1110Z-41CAB) RESULTS



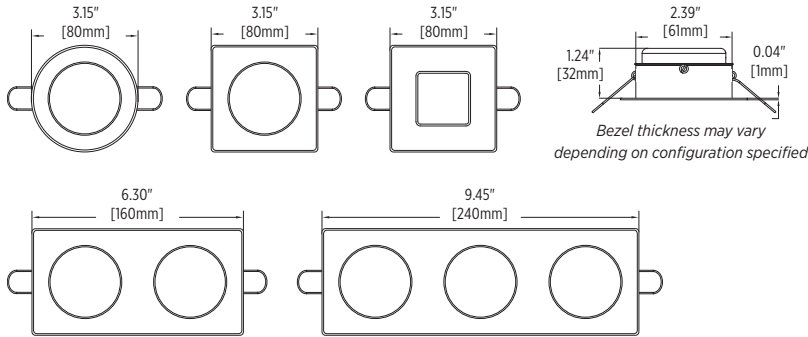
Mounting Height	fc @ Center Beam	Diameter of Lighted Plane
1.0 ft	69.0 fc	2.0 ft
2.0 ft	12.7 fc	4.1 ft
3.0 ft	7.7 fc	6.1 ft
4.0 ft	4.3 fc	8.2 ft
5.0 ft	2.8 fc	10.2 ft
6.0 ft	1.9 fc	12.3 ft
7.0 ft	1.4 fc	14.3 ft
8.0 ft	1.1 fc	16.3 ft

for lux, multiply by 10.8

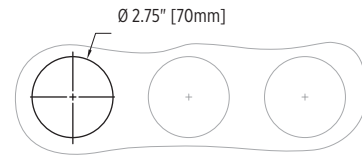
Multiplier Table	3000°K	6500°K
Apeiron		x 1.2

All results are according to IESNA LM-79-2008: Approved Method for the Electrical and Photometric Testing of Solid-State Lighting.

DIMENSIONS

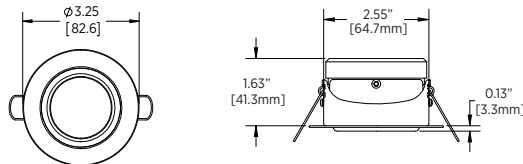


MOUNTING

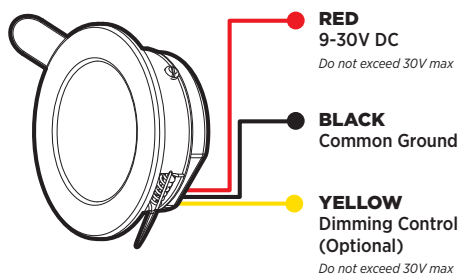


For Double or Triple applications, bore the appropriate number of holes 3.15" apart on center.

SWIVEL OPTION



WIRE FUNCTION



LIGHTLINK™ See wiring examples below.

Using 3rd Party Multiplex & PWM Dimmers:

This light fixture is compatible with i2Systems LightLink™ Dimmers and 3rd party PWM type dimmers.

To use a 3rd party PWM dimmer, drive the Yellow Dimming Control Wire using a Pulse Width Modulation (PWM) Controller. By driving the Yellow Dimming Control Wire Low to DC Common, the Fixture turns off. By driving the Yellow Dimming Control Wire High to DC Positive (i.e. +24V), or by allowing the wire to Float (no connection), the Fixture turns on to 100%.

The PWM signal must be a Square Wave at a fixed frequency and a maximum voltage of 30V DC. Frequency range may be between 100Hz and 300Hz (user selected). A wiring example is shown on the last page of this spec sheet.

PROTECTION FEATURES



Active Thermal™

Active Thermal dims the Apeiron to help reduce the risk of overheating.

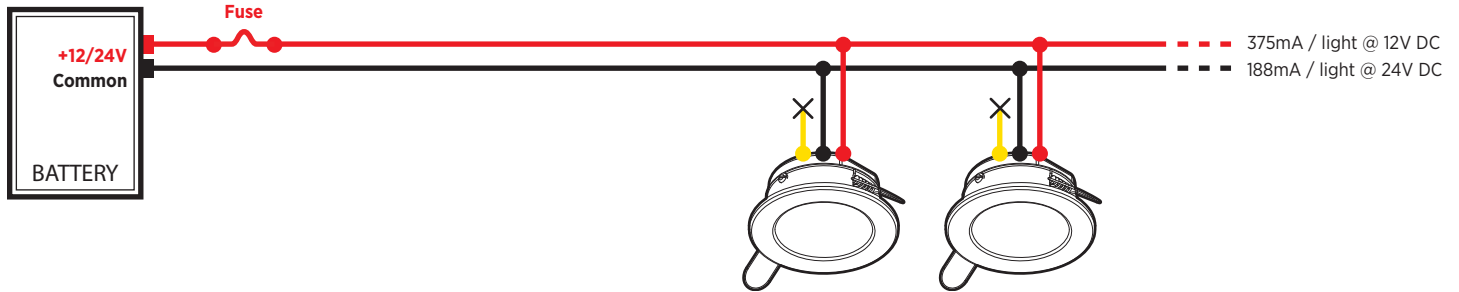


Electrical Protection

- Dim Line Protected to 30V DC
- Transient Protection
- Reverse Polarity Protection
- Auto-Reset Fuse

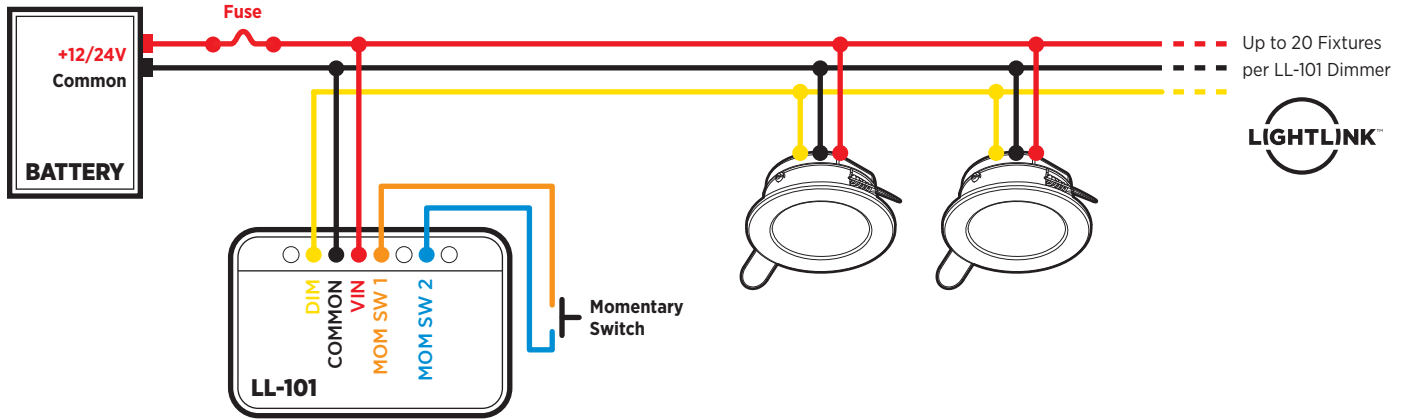
WIRING EXAMPLE

12/24V DC NO DIMMING



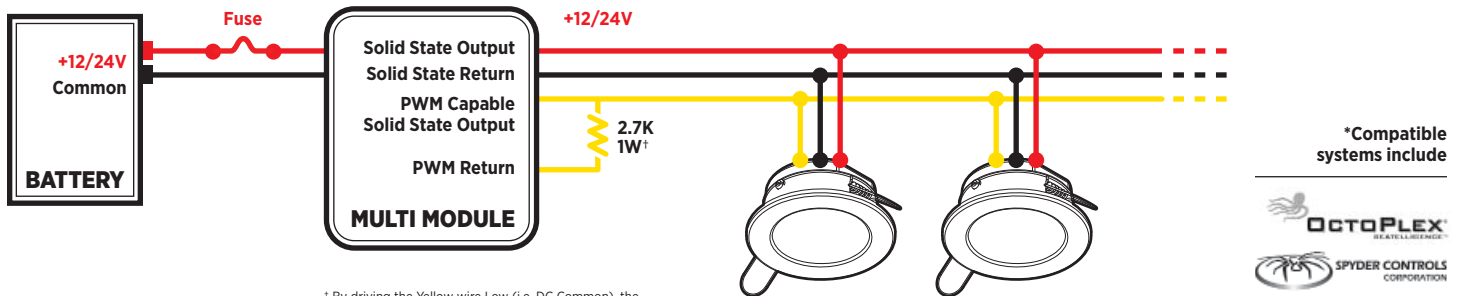
WIRING EXAMPLE

12/24V DC PUSH BUTTON SWITCH DIMMING



WIRING EXAMPLE

12/24V DC 3RD PARTY MULTIPLEX DIMMER*



* By driving the Yellow wire Low (i.e. DC Common), the Fixture turns off. Many Multiplex type systems were originally designed for halogen lamps and do not drive Low, in which case in this example a 2.7K, 1 Watt Pull Down Resistor pulls down the Yellow Dimming Line to DC Common when the PWM is not driven High (thus shutting off the Fixtures).