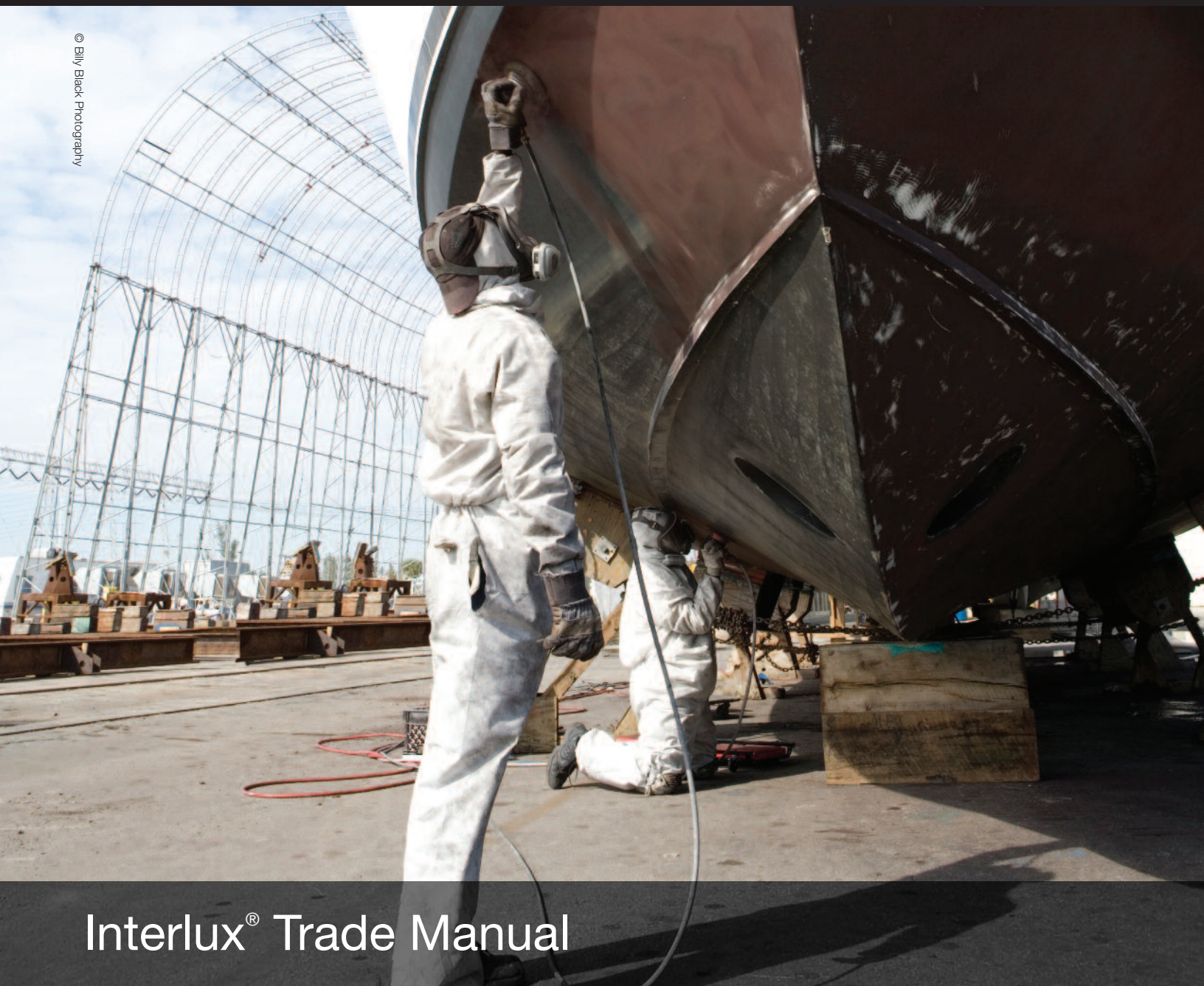


© Billy Black Photography



# Interlux<sup>®</sup> Trade Manual



**AkzoNobel**

# About Us

## PROMOTE SERVICE EXCELLENCE WITH INTERLUX

By using Interlux paint products and systems, you automatically benefit from the added value factors associated with this brand :

- **Premium Brand Recognition:** With world-wide availability & service for your customers
- **Asset Protection:** By choosing Interlux you are preserving your brand reputation while providing peace of mind to your customers through proven paint systems
- **Corporate Responsibility:** Interlux is renowned for its legal, environmental, social and sustainable business ethics
- **Complete Warranty Cover:** Interlux stands behind you
- **Extensive Distribution Network:** With complete range offering

## CUSTOMIZED SERVICE AND PAINT SYSTEMS

Interlux has one of the largest manufacturer sales teams in North America and we continuously offer training opportunities, quality assurance audits (on demand) and paint inspections.

No matter what size of boat, what type of substrate or location, Interlux will always aim to meet or exceed your requirements. We develop our products and paint systems in partnership with boat yards, builders and applicators like you, to fine-tune solutions with the goal to maintain an efficient, performance-driven and cost saving paint process that works for you.

“ Brewer Yacht Yards have been using Interlux Paints for over 45 years in our service facilities from New York to Maine. The results have been very positive. The relationship between Brewer Yacht Yards and Interlux is an added bonus for our valued customers who expect the best. ”

**Michael Keyworth, Vice President, Brewer Cove Haven, Barrington, RI**



## LONG TRACK RECORD AND PROVEN PERFORMANCE

Interlux has the largest, dedicated yacht paint Research & Development facilities in the world and it's an operation backed by the largest coatings company in the world: AkzoNobel. With over 100 years of experience, Interlux has delivered numerous, patented break-through technologies over time. With great staff retention rate, our experts have excelled in fields such as antifouling and foul-release technologies, epoxy resin, anti-corrosive technologies and more. With these people and the great investments provided, Interlux continues to be a leader – and a preferred supplier – in yacht coatings.

### Examples of current OEM customers include:

Viking	Westport
Ocean Yachts	Delta Marine
Hinckley Yachts	Morris Yachts
Grand Banks	Trinity Yachts
Sea Ray	Meridian
Bayliner	Newcastle Marine
Paul Mann Custom Yachts	

“ At Trinity Yachts, the access to Technical Service is very important. Interlux provides us with dedicated technical support, along with proven product technologies and custom specifications for every project. If we have any questions or concerns, Interlux is there for us. ”

**William S. Smith III, Vice President, Trinity Yachts LLC**

In addition, we work with North America's finest boat yards, including multi-location accounts such as for example Brewer Yacht Yards and Marine Max and extending to Superyacht Refit yards such as Rybovich & Sons. Ask about our **Boatyard Center Advertising Program** to review further opportunities to excel your business.



## INDUSTRY RELATIONS

At Interlux, we see ourselves as a partner to the Yacht industry, supporting the future of North America's boating industry through:

- Partnerships with local boating communities and associations such as NMMA, NMDA, ABBRA, ABYC & the International Superyacht Society
- Lobbying legislative authorities towards solutions that sustain the North American yacht industry through the stricter, regulatory environment
- Continuous support and resources invested towards preservation of our waters and environment, including the sustainability of the earth's natural resources when selecting our raw materials and suppliers
- Funding of charities and good causes, such as ABBRA's Disaster Relief program, the Rosalia Project and Rocking the Boat.
- Solutions that work for boatyard, boat builders and applicators in all economic climates and business improvement programs
- Customer promotions
- Training and education of new boaters, new staff or new work or application procedures

**We could not do all this without you, our loyal, passionate & professional customers.**

# Micron® Technology

## MICRON – TOMORROW'S TECHNOLOGY TODAY

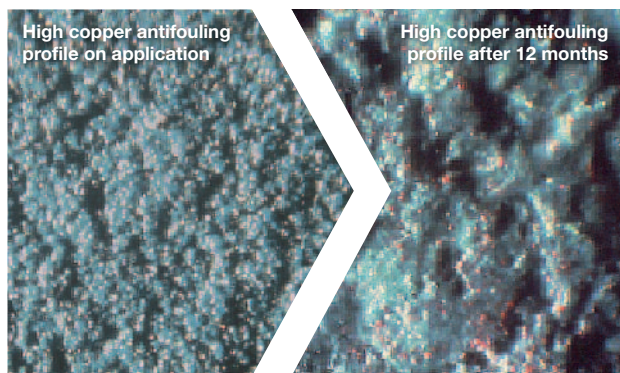
Unlike traditional antifoulings, Micron technology is formulated to become smoother with use to reduce any 'drag' hence reducing the coefficient of friction.

- **Reduced coefficient of friction** > less power required to maintain desired speed
- **Less power required** > lower fuel consumption, leading to fewer carbon dioxide and sulphur dioxide emissions into the air

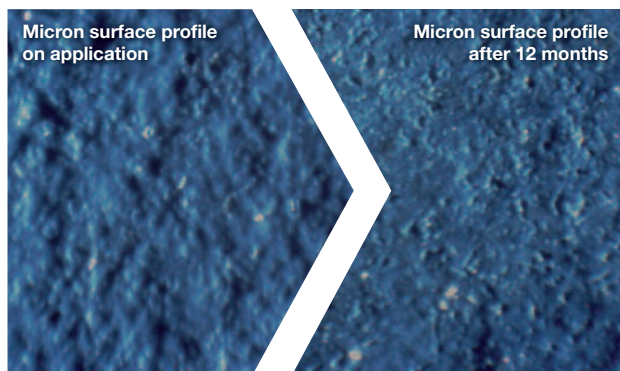
### Micron Technology and Fuel Savings

There's another added benefit to controlled polishing:  
**Fuel Savings!!**

Old fashioned high copper antifouling roughens over time:



Micron continues to get smoother over time!



Power or sail, with today's fuel prices, a smooth bottom will deliver better fuel efficiency over the long term than old fashioned hard high copper bottom paints.

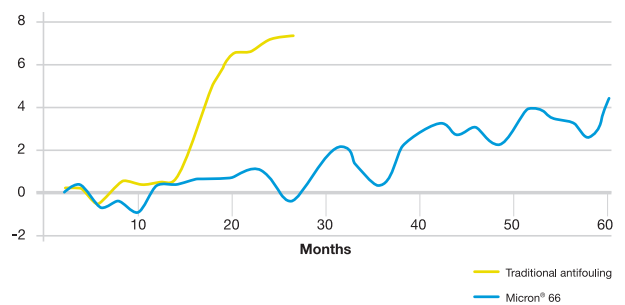
## Micron® 66®

Micron 66 is the top performer in the Micron Range, that will deliver great value not only for your business but also for your customer.



Micron 66 is a true, Self Polishing Copolymer. Its unique characteristics set it apart as it has a chemical reaction with salt water that keeps it active, with controlled release of copper, to ensure a long life and continuity in performance – even when the boat is on the mooring. This controlled release of copper sustains anti-foul performance and avoids higher concentrations of copper emitted into the water at any one time. Micron 66 type of technology has an average hull roughness (AHR) of just under 5 mils (120 microns) when just applied. Observations in the commercial marine market confirmed the AHR increase, on average, to be just under 1 mil per year (20 microns), compared to standard, old fashioned hard and ablative paints that on average increase 1.5 mils per year (30 microns). Testing has shown this small difference can result in up to 10% fuel penalty!

% increase in fuel consumption





### Micron Technology antifouling – the best choice for Professionals and Trade

- Predictable performance leads to satisfied customers and repeat business
- Allows for excellent productivity, achieving great cost efficiencies:
  - No heavy build-up of paint over time. Reduces the need to sand in between recoating schedules, which saves labor time
  - No recoating necessary during haul and re-launch period, minimizing handling and maintenance requirement within season schedule
  - Paint it and splash it within the same day
  - Great coverage
- Worldwide availability of products and technical support services
- Premium brand value – by carrying Micron you promote premium services
- Consumer advertising creates 'pull' in the market, attracting demand & raising awareness
- Backed by Interlux Warranty

### Micron Technology antifouling – the best choice for your customer

- Boat owner will get multi-seasonal performance
- Promotes great opportunities for fuel savings
- Proven performance
- Our top selling range of antifouling sold & available worldwide
- Suitable for all boats\* in most waters
- Use on power and sail boats up to 50 knots
- Highly engineered controlled polishing rate
- Backed by Interlux Technical Service Support

\* Not compatible for use on aluminum without full epoxy barrier. Please consult Interlux for details on paint system choice. Micron 66 is not suitable for fresh water.



### Micron Technology antifouling – the responsible choice for all

- Increased Fuel Economy = reduced carbon dioxide and sulfur dioxide emissions
- Multi-seasonal performance – fewer applications during a boat's lifetime means a reduction in overall emissions
- Self polishing – no need for scrubbing (minimizes the effect of paint deposit waste)
- Less sanding required – less water run-off to collect
- Lloyds Register certified – contains no Tributyl Tin or other banned substances
- For even lower solvent emissions – Micron CSC HS

**If it's not Micron Technology, it's old technology!**



# Antifoulings (USA)

## Polishing Antifoulings – Micron® Technology

### Micron® 66®

- Unique Biolux® SPC Technology
- Maximum protection and long life
- Worldwide availability
- Proven fuel efficiencies
- Lloyd's Register Certified



Code	Color	Gallon	3 Gallon
YBA470	Blue	•	•
YBA471	Green	•	
YBA472	Red	•	
YBA473	Black	•	•
YBA476	Navy Blue (Export only – Non-US Territories)	•	



Blue YBA470    Green YBA471    Red YBA472    Black YBA473

### Micron® Extra with Biolux®

- Biolux Technology controls slime
- Long life, all boats, all waters
- All the benefits of Micron Technology
- Worldwide availability



Code	Color	Quart	Gallon
5690	Blue	•	•
5691	Green	•	•
5692	Red	•	•
5693	Black	•	•
5694	Shark White	•	•
5695	Brown	•	•
5696	Dark Blue		•



Blue 5690    Green 5691    Red 5692    Black 5693    Shark White 5694



Brown 5695    Dark Blue 5696



**American Manufacturing at its best!**

### Micron® CSC

- Controlled polishing
- Multi-seasonal performance
- Proven performance for 20 years
- Uses less copper more efficiently



Code	Color	Quart	Gallon	3 Gallon
5580	Blue	•	•	•
5581	Green	•	•	
5582	Red	•	•	
5583	Black	•	•	•
5584	Shark White	•	•	



Blue 5580    Green 5581    Red 5582    Black 5583    Shark White 5584

### Micron® CSC HS

A higher solids version of Micron CSC, Micron CSC HS offers a reduction in Volatile Organic Compound (VOC) overall solvent emissions. Yields a thicker paint film which will optimize performance longevity. Bright colors. Not for use on aluminum.



Code	Color	Gallon
YBC580	Blue	•
YBC581	Green	•
YBC582	Red	•
YBC583	Black	•



Blue YBC580    Green YBC581    Red YBC582    Black YBC583

### Micron® CF

- Excellent protection in a copper free formula
- Suitable for all boats, all waters and all substrates
- Bright colors including shell white
- All the benefits of Micron Technology



Micron CF is the Interlux product to try out this year.

Code	Color	Quart	Gallon	3 Gallon
YBD100	Blue	•	•	•
YBD101	Green	•	•	
YBD102	Red	•	•	
YBD103	Black	•	•	•
YBD104	Shell White	•	•	



Blue YBD100    Green YBD101    Red YBD102    Black YBD103    Shell White YBD104



## Ablative Antifoulings

### ACT

Best value ablative antifouling on the market. Designed to erode away with use which reduces paint build-up and sanding.



Code	Color	Quart	Gallon	3 Gallon
4490B	Red	•	•	
5590B	Green	•	•	
6690B	Blue	•	•	•
6696B	Dark Blue		•	
7740B	Gray White		•	
7790B	Black	•	•	•
8890B	Brown		•	



Red 4490B    Green 5590B    Blue 6690B    Dark Blue 6696B    Gray White 7740B



Black 7790B    Brown 8890B

### Bottomkote® Pro

Proven performance for boatyards that require economical, dependable, seasonal antifouling protection. Bottomkote® Pro can be applied over all types of properly prepared substrates, except aluminum. VOC Compliant.



Code	Color	Gallon
49	Red	•
69	Blue	•
79B	Black	•



Red 49    Blue 69    Black 79B

## Pacifica® Plus

A fantastic and innovative product, Pacifica Plus is a great performing, dual biocide antifouling that uses Biolux Slime Blocking Technology to combat slime and Ecomea™ to ward off barnacles and zebra mussels. Pacifica Plus is fast drying, copper free, safe for all substrates including aluminum and exhibits low Volatile Organic Content (VOC) to reduce solvent emissions into the atmosphere.



Code	Color	Pint	Quart	Gallon
YBB260	Blue		•	•
YBB261	Green			•
YBB262	Red			•
YBB263	Black	•	•	•
YBB264	Gray	•		•



Blue YBB260    Black YBB261    Red YBB262    Black YBB263    Gray YBB264

*Ecomea™ is a trademark of Johnson & Johnson*



## Dual Resin Technology (DRT)

### Fiberglass Bottomkote® NT

- NT (New Technology) – Optimizes the benefits of hard and ablative paints through a unique Dual Resin Approach
- Fast drying formulation; paint and launch the same day
- Compatible with most other hard and ablative paints
- Durable finish with slow-polishing surface



Code	Color	Quart	Gallon	3 Gallon
YBB349	Red	•	•	
YBB359	Green	•	•	
YBB369	Blue	•	•	•
YBB379	Black	•	•	•



Red YBB349    Green YBB359    Blue YBB369    Black YBB379

# Antifoulings (USA)

## Hard Antifoulings

### Ultra with Biolux®

Ultra for high fouling areas provides excellent long-term antifouling protection. The fast dry formula of Ultra allows the boat to be painted and launched in the same day. Ultra has a hard durable finish with excellent color stability. Biolux® technology reduces slime and increases antifouling performance.



Code	Color	Gallon	3 Gallon
3449F	Red	•	
3559F	Green	•	
3669F	Blue	•	•
3779F	Black	•	•



Red 3449F



Green 3559F



Blue 3669F



Black 3779F

### Fiberglass Bottomkote® Aqua

Fiberglass Bottomkote Aqua provides a colorfast, durable, low emissions finish that will provide premium protection from algae, slime, barnacles, zebra mussels and other forms of fouling. The low VOC, low odor formula of Fiberglass Bottomkote Aqua is fast drying and has the added benefit of easy clean up with soap and water.



Code	Color	Quart	Gallon	3 Gallon
YBA549	Red		•	
YBA559	Green		•	
YBA569	Blue	•	•	•
YBA579	Black	•	•	•



Red YBA549



Green YBA559



Blue YBA569



Black YBA579



### Trilux® 33®

Available in 5 bright clean colors including white Trilux 33 is ideal for use on aluminum, fiberglass, wood and steel. It uses the latest Biolux technology to block slime and improve antifouling performance.



Code	Color	Pint	Quart	Gallon	3 Gallon
YBA060	Blue		•		•
YBA061	Green			•	
YBA062	Red			•	
YBA063	Black	•	•	•	•
YBA068	White		•	•	



Blue YBA060



Green YBA061



Red YBA062



Black YBA063



White YBA068

### Trilux® 33® Aerosol

Formulated for all outdrives and underwater metal it is our most effective aerosol antifouling available. It uses Biolux technology to reduce slime and increase antifouling performance. Now available in Trilux 33 formulation with Biolux to control slime.



Code	Color	16oz
YBA063A	Black	•
YBA064A	Gray	•
YBA068A	White	•



Black YBA063A



Gray YBA064A



White YBA068A



## Product Focus

### MICRON® CF

Micron CF is a multi-season antifouling that uses Biolux slime blocking technology to combat slime and Ectocarpus to ward off barnacles and zebra mussels. Like all Micron paints, Micron CF is a polishing product that reduces paint build-up and the self-smoothing characteristics of the paint reduce friction and improve fuel efficiency. A high solids formulation, Micron CF offers reduced solvent emissions and is VOC compliant. Micron CF is suitable for use on all boats.



### Micron CF offers all the benefits of Micron Technology, plus:

- Copper-free ablative technology with Biolux® slime blocking technology
- Contains Ectocarpus™
- Can be used on any substrate - including aluminum
- Excellent protection in a copper free formula
- Reduced discoloration at the waterline
- Available in 4 bright colors

“This past spring we applied White Micron CF to a client’s boat. Not only has it performed up to our expectations, but the waterline showed no staining or color change. The white STAYED white and was brighter than others on the market. Micron CF has now been added to our antifouling offering along with Pacifica Plus.”

**Dave Rodrigues, Yard Manager**  
Brewer Sakonnet Marina, Portsmouth, RI

## Low Friction for Super Speed

### VC®17m Extra with Biolux®

VC17m Extra with Biolux is a thin film antifouling paint for racing sailboats and powerboats that is formulated with a fluoro microadditive to reduce friction and drag. When applied the VC17m Extra will immediately give a hard, super smooth, racing finish that would normally take days of tiresome sanding. VC17m Extra incorporates the Biolux technology along with the metallic copper to achieve complete protection in freshwater or low fouling saltwater. VC17m Extra is great for use on inflatables.



Code	Color	Quart
YBA405 Kit	Original	•
YBA406 Kit	Blue	•
YBA407 Kit	Red	•



Original YBA405    Blue YBA406    Red YBA407

### VC® Offshore

VC Offshore for racing, sailing and performance power boats. Formulated with a fluoro microadditive for a hard, smooth surface that can be burnished to a very low profile. When polished, VC Offshore yields a very hard finish for maximum durability and reduced friction for increased performance. VC Offshore is suitable for use in fresh and salt water for low fouling conditions.



Code	Color	Gallon
V116	Blue	•
V117	Red	•
V118	Black	•
R3950	Baltoplate Metallic Grey	•



Blue V116    Red V117    Black V118    Baltoplate Metallic Gray R3950

### VC® Performance Epoxy

A bright white hard epoxy with a fluoro microadditive for use on the bottoms of performance boats that do not require antifouling. Fluoro microadditive is added to reduce drag and to make it easier to wet sand. Use on fiberglass, epoxy and properly prepared metal surfaces. Ideal for boats where a non-toxic bottom finish is preferable or where fouling is at a minimum. Apply by brush roll or spray.



Code	Product	1/2 Gal Kit	2 Gal Kit
V127 Kit	VC Performance Epoxy	•	•

# Antifoulings (Canada) & the Interlux commitment to all North America Customers

## CANADIAN ANTIFOULINGS

### Polishing Antifoulings

#### Micron<sup>®</sup> CSC

Uses Micron<sup>®</sup> Technology to provide excellent, long lasting antifouling protection against all types of fouling. Controlled polishing means that it wears away like a bar of soap, reducing buildup of old coatings and minimizing sanding at reapplication. It can be hauled and relaunched without repainting. Uses less copper more efficiently than old fashioned high copper bottom paints.



Code	Color	Quart	Gallon
5580CA	Blue	•	•
5581CA	Green	•	•
5582CA	Red	•	•
5583CA	Black	•	•
5584CA	Shark White	•	•

### Ablative Antifouling

#### Tri-Lux II

Unique copolymer bottom paint, available in a wide range of bright colors. Although specifically formulated for aluminum crafts and related surfaces, Tri-Lux II is equally compatible with fiberglass, wood, steel and lead. Tri-Lux II is ideal for aluminum outdrives and outboard motor lower units; provided the application instructions are followed. Tri-Lux II can be used in fresh, salt and brackish water.



Code	Color	Quart	Gallon
490CA	Blue	•	•
491CA	Red	•	•
493CA	Black	•	•
498CA	White	•	•

### Fiberglass Bottomkote<sup>®</sup> ACT

ACT uses Ablative Technology to provide excellent season-to-season protection. Ablative Technology enables it to erode away with use and eliminates the build-up of old spent coatings and the heavy sanding needed to remove them. ACT provides excellent protection against all forms of marine fouling in waters with moderate to heavy fouling and can be used in fresh, salt and brackish waters.



Code	Color	Quart	Gallon
6690CA	Blue	•	•
7790CA	Black	•	•

### Bottomkote<sup>®</sup> XXX

Proven performance for boatyards that require economical, dependable, seasonal antifouling protection. Bottomkote XXX can be applied over all types of properly prepared substrates, except aluminum.



Code	Color	Quart	Gallon
49CA	Red	•	•
69CA	Blue	•	•
79CA	Black	•	•

### Hard Antifouling

#### Fiberglass Bottomkote<sup>®</sup>

Fiberglass Bottomkote is a hard modified epoxy, fast dry antifouling paint with clean stable colors that has been developed to provide effective season-long protection on all power and sailboats. The fast dry formula allows the boat to be painted and launched in the same day. Fiberglass Bottomkote is recommended for use on the underwater areas of fiberglass, wood, and properly primed metal (except aluminum) boat hulls. It can be used in fresh, salt and brackish waters.



Code	Color	Quart	Gallon
449CA	Red	•	•
559CA	Green	•	•
669CA	Blue	•	•
779CA	Black	•	•
999CA	Racing Bronze	•	•

### Low Friction for Super Speed

#### VC<sup>®</sup> Offshore

VC Offshore for racing, sailing and performance power boats. Formulated with fluoro microadditive for a hard, smooth low friction surface that can be burnished to a very low profile. When polished, VC Offshore yields a very hard finish for maximum durability and reduced friction for increased performance. VC Offshore is suitable for use in fresh and salt water.



Code	Color	Gallon
V116CA	Blue	•
V118CA	Black	•

#### VC<sup>®</sup> 17m

VC17m is a thin film antifouling paint for racing sailboats and powerboats that is formulated with fluoro microadditive to reduce friction and drag. When applied the VC17m will immediately give a hard, super smooth, racing finish that would normally take days of tiresome sanding. VC17m is great for use on inflatables.



Code	Color	Quart
V105E KitCA	Original	•
V106E KitCA	Blue	•
V107E KitCA	Red	•

#### VC<sup>®</sup> Performance Epoxy

Fluoro microadditive bearing two-part epoxy for use on the underwater surfaces of high performance boats. Apply to gelcoat, bare fiberglass, epoxy and primed metal surfaces. Dries to a hard, somewhat slippery, semi-gloss white finish that is ideal for wet sanding and burnishing. It has no antifouling or foul release properties.



Code	Product	1/2 Gal	2 Gal Kit
V127KITCA	VC Performance Epoxy	•	•

PROFITABILITY AND MARGIN PROTECTION



**Optimize your margin potential with Interlux**

Call your Interlux representative today to help evaluate how the Interlux products and paint systems may help you achieve your goals.

“ Profitable programs and excellent customer support have made doing business with Interlux beneficial to Brewer Yacht Yards and our customers. ”

**Chick Michaud, Brewer Pilots Point Marina, CT**

Here are some examples that could be reviewed:

**Packaging**

By switching from a regular one gallon can of antifouling to an Interlux three gallon pail, you can observe up to **40% margin improvement**<sup>1</sup>. In addition you may gain further cost savings through the potential of reduced packaging/ disposal costs.

**Paint System Simplification**

By switching from a traditional primer system for fiberglass boats to Interlux **Ultimate No Sand System**, boat builders have observed **30-40% improvement in production efficiencies**, leading to great savings in labor time and costs.

**Application method**

By switching from roller application to spray application, a complete paint job may be finished in less time which increases the yard’s capacity for projects (faster turnaround) and further income.

<sup>1</sup> Based on estimated boat yard pricing. Pricing & actual margin improvement may vary.



THE ECHO PROGRAM

FOR A SUSTAINABLE FUTURE



The Echo Program covers everything that Interlux is doing as a Yacht Coatings manufacturer to reduce the impact on the environment. The program includes reduction targets for VOC (Volatile Organic Compounds), average biocidal emissions for antifoulings and waste reduction.

Utilizing the scientific expertise in the company, an Environmental Scorecard tool has been developed, that uses a scientifically credible route for assessing and scoring products. The scorecard, unique and only available to Interlux and Awlgrip, assesses the environmental impact of a product across its entire life cycle, from raw material sourcing to waste disposal.

“ The Echo Program is not only a commitment of responsibility and transparency; it sets the baseline for us as a company to focus on continuous, environmental improvement of our products. We are not interested in greenwashing. We have a corporate responsibility to our society and better yet, the results will help drive the yacht paint industry in the right direction and with better solutions for our customers and their future. ”

**Fred Daoust, General Manager, Interlux & Awlgrip Yacht Coatings, North America**



# Primers

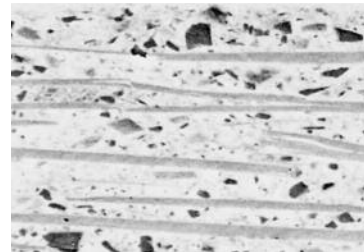
## Margin Protection Plan You asked for it and we delivered 3 Gallon Pails – Designed for the Professional

- Suitable for Boatyards and Builders
- An opportunity to reduce waste material & handling
- Our most popular products available in larger sizes
- Products available in Black and Blue only
- Obtain your preferred product, now at a preferred price



## InterProtect® 2000E

- The standard in boatyards for more than 25 years
- Excellent water barrier properties using **MICRO-PLATES®** technology
- Superior adhesion to all common yacht substrates
- Formulated to protect metal against corrosion and oxidation
- Addition of Micro-Plates technology avoids heavy water absorption and blistering problems
- Use above and below the waterline
- Superior holding primer in preparation for fairing jobs
- Reduced VOC formulation available where lower emissions are requested

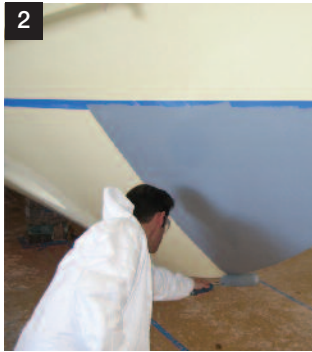


Magnified 900 times, the Micro-Plate effect of InterProtect is demonstrated in this electron microscope photo. The overlapping Micro-Plates create a material barrier against water migration yet provide a smooth, hard epoxy finish.

InterProtect 2000E has a natural structure within the epoxy coating to create a barrier against water permeation called Micro-Plates. Technically, the InterProtect 2000E Micro-Plates formula provides millions of overlapping microscopic plates. When bound in the epoxy coating, they create a barrier similar to shingles on a roof. Enlarged 900 times in this electron microscope photo, the Micro-Plates clearly eliminate any direct path for water migration.

InterProtect 2000E is one of the key components in the Ultimate No Sand System, preferred by first class North American boat builders.

## THE ULTIMATE NO SAND SYSTEM Developed for Professionals and Trade



1. Wash & Degrease with YMA601 Fiberglass Surface Prep  
2. Apply InterProtect® 2000E  
3. Apply Micron® Technology  
For exact and complete system details please contact your Interlux® Representative.

### YMA601 Fiberglass Surface Prep

- In the Ultimate No Sand System, YMA601 replaces the traditional sanding step on gelcoat & will avoid the typical dust associated with sanding
- Faster and more labor efficient than sanding
- Low odor formulation with abrasives provides a profile for primer application
- Robust, long-term performance



### Three reasons to buy our 3 gallon unit of InterProtect 2000E

1. Observe the potential for great margin improvement
2. Fewer cans to dispose of
3. Faster mixing in high volume areas, higher productivity



## NEW FROM INTERLUX: InterProtect HS

InterProtect HS is a versatile high solids 2 part epoxy for use above and below the waterline on all substrates.



- Barrier coat requires fewer coats to save time and reduce labor costs resulting in increase profitability for boatyards
- Micro-Plate Technology substantially reduces water migration to protect fiberglass and metal from corrosion
- Low VOC meets the most restrictive regulations and helps reduce solvent emissions into the environment
- Antifouling can be applied directly over this product

## Intersleek Pro

Intersleek Pro is a biocide-free antifouling coating based on patented fluoropolymer foul release technology. It is unlike traditional antifouling coatings



in that it provides a smooth, low-energy surface to which fouling organisms find difficult to tightly adhere to, making removal easy. Intersleek Pro can reduce drag and increase vessel performance over several seasons and is available in three bright colors; white, blue, and black.

- Foul release capabilities - Fluoropolymer-based technology provides a smooth and slippery surface, making it difficult for fouling to attach
- Low-energy surface - Delivers improved speed and responsiveness, increased fuel efficiency, and reduced engine load
- Biocide-free technology - Offers a reduced impact on the marine environment
- Multi-year life expectancy - Extended life span delivers a good return on investment\*
- Vibrant, glossy finish - Offers a bright color at the waterline that is maintained over time
- Proven Technology - Based on technology that has been successfully used for many years on commercial and recreational vessels
- Multi-use coating - Ideal for use on both properly primed boat hulls and propellers

# Interior Coating Systems

## INTERLUX® INTERIOR COATING SYSTEMS

The interior surfaces of a yacht hull and superstructure will often not be seen in between major refits. It is true to say that yachts constructed out of steel or aluminum corrode from the inside out if not sufficiently protected. In contrast to any corrosion on the exterior that can be dealt with each time the yacht is lifted for antifouling application, corrosion occurring from the inside of the yacht is generally not seen until it is too late. Our specifically formulated Interiors range offers you the peace of mind of knowing that the interior of the hull, its bilges, and engine rooms are being protected from this hidden, but destructive threat.

Interlux is proud of the continued success of Interior Primer 860 and Interior Finish 750 and their global track record of application and performance. Both products are specifically formulated for yacht interiors and are used in schemes with full Lloyd's Surface Spread of Flame Certification for MCA and SOLAS compliance (a requirement when building to meet the standards of a classification). The products are designed to protect against internal corrosion problems without compromising on 'superyacht standard' aesthetics.

“ Every little helps when you are managing margins. The ease of repair and quick drying time of the scheme help reduce the overall project build time and cost. It allows quick access to the rest of the project team when fitting out and working in the interior areas. ”

**Arie Springvloet, Paint Manager – Amels, Holland**

**Interior Primer 860** combines fast walk on times and extended overcoating intervals with excellent anti-corrosive properties to give a long lasting coating that protects the interior of the yacht.



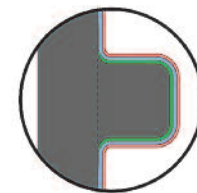
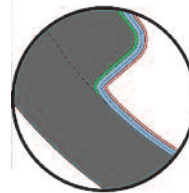
**Interior Finish 750** provides a high gloss finish that is tough, chemically resistant and easy to clean. Together with Interior Primer 860 the scheme is simple, quick to apply and highly durable. It also has the benefit of Lloyd's Register Surface Spread of Flame Certification making this a system suitable for use in all areas of yacht interiors.



### Schemes

#### Hull Interior:

- x1 full coat Interior Finish 750  
1.6 mils DFT
- x1 full coat Interior Primer 860  
5.0 mils DFT
- Stripe coat Interior Primer 860\*  
3.0 mils DFT



#### Bilges:

- x1 full coat Interior Finish 750 1.6 mils DFT
- x2 full coats Interior Primer 860 5.0 mils DFT
- Stripe coat Interior Primer 860\* 3.0 mils DFT

\* Stripe coat only required on frames and weld seams





**How the Interlux system can help reduce overall solvent emissions**

At Interlux, we work closely with international organizations such as the International Council of Marine Industry Associations (ICOMIA) and domestic authorities such as the Environmental Protection Agency in order to utilize best management practices and aim for an overall reduction in our environmental footprint, while lobbying the interests of the marine industry, with the aim to ensure a continuous and prosperous future for all stakeholders associated with the marine industry and yachting in particular. From these relationships we have developed the expertise that can help you comply or even aim for further improvement/reduction in overall emissions.

The Interlux Interior Coating Schemes could **reduce your solvent emissions by approximately 50%** compared with a conventional interior system.

Scheme	VOC g/m <sup>2</sup> or VOC grams per 10ft <sup>2</sup>	
	Roller	Spray
Standard Conventional System	268	371
860/860/750	174	195

**Additional benefits for Fiberglass Substrates**

If fiberglass production is your business our Interior Coating Schemes could also help reduce your customers' emissions as our Interior Schemes can be used as an alternative to interior gelcoat, at only a fraction of the weight. The higher opacity of our Interior products means that fewer coats are required; saving on labor costs and weight (hence saving on operating expenses). Every 10 square feet (ft<sup>2</sup>) covered with gelcoat could add 2.5 lbs (1.2kg), whereas the same area covered with one of our Interior Coating Systems would add just ½ lb / 270g. That's a weight saving potential of **200 lbs per 1,000ft<sup>2</sup>!!** This weight saving could result in speed gains and increased fuel efficiency for the lifetime of the yacht, leading to the potential of great operating cost savings.



Reduced surface preparation requirements give a reduced project cycle time, lowering your labor costs and increasing your margin potential.



# Primers, Interior Coatings, Fillers and Topsides

## Primers and Finish Primers

### InterProtect® Epoxies

The Industry Choice for protection and repair since 1986

- For prevention and repair of gelcoat blistering
- Universal primer for above and below the waterline
- Excellent for use on underwater metals, hulls and keels
- Easy to apply – dries quickly – no sanding

Code	Color	Quart	Gallon	3 Gallon
2000E Kit	Gray Kit	•	•	
2002E Kit	White Kit	•	•	
2000E	Gray Base			•
2002E	White Base			•
2001E	Cure		•	
2000VOC	InterProtect VOC Gray Kit		•	
YPA423KIT/1	InterProtect HS		•	

## Undercoaters, Primers and Sealers

Code	Color	16oz	Quart	Gallon	2 Gallon
404 Kit	Epoxy Primekote® Kit		•	•	
4279	Pre-Kote White		•	•	
4280	Pre-Kote Blue Gray		•		
YPA200	Fiberglass No-Sand Primer		•		
YPA984	Primocon		•	•	
YPA985	Primocon Aerosol	•			
YPA987	TBT Sealer			•	



## Interior Coatings

### Primers

High-build, low VOC epoxy primer with fast drying characteristics.

Code	Product	Quart	Gallon	5 Gallon
YIC861	Interior Primer 860 Part B Converter	•	•	
YIC862	Interior Primer 860 White Part A		•	•
YIC866	Interior Primer 860 Gray Part A		•	

### Finishes

High gloss, durable polyurethane finish specially formulated for interiors.

Code	Product	22 Ounce	Gallon
YIC750	Interior Finish 750 Base – White 9003		•
YIC751	Interior Finish 750 Part B Converter	•	
YIC752	Interior Finish 750 Base – Gray 7035		•
YIC753	Interior Finish 750 Base – Gray 7038		•
YIC755	Interior Finish 750 Base – White 9010		•
YIC756	Interior Finish 750 Base – Matterhorn White		•



## Interlux Fillers & Fairing Compounds

### Interfill® 830 Lightweight Fairing Compound – 1:1 Mix

Code	Color	2 Gallon
YAA867	Part A Trowelable – Base Component	•
YAA869	Part B Trowelable Fast – Curing Agent	•

### Interfill® 833 Fine Finishing Fairing Compound – 1:1 Mix

Code	Color	1/2 Gallon
YAA813	Part A Trowelable Base	•
YAA815	Part B Trowelable Fast Cure	•

### Interlux® Fillers

Code	Color	500ml	Liter
YAV135 Kit	Watertite	•	•

### Interlux® Surfacing Putty

Code	Color	Pint
257	Surfacing Putty White	•



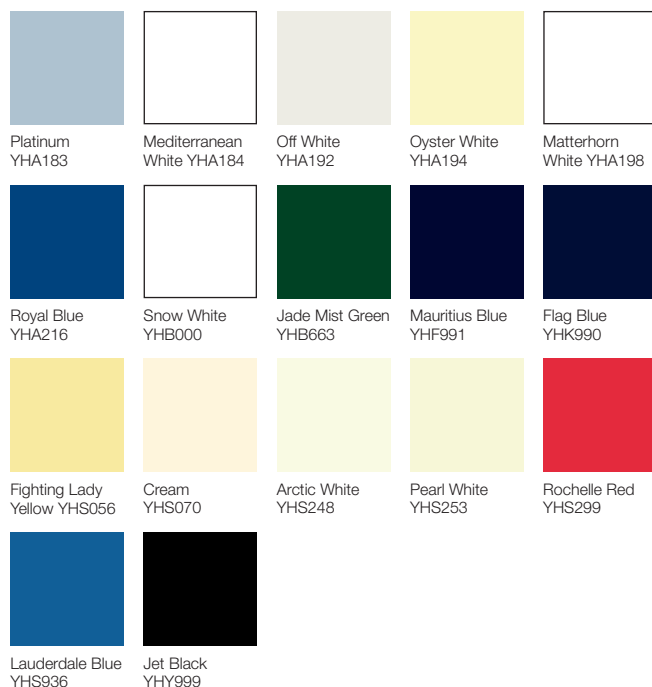
## Topside Finishes

### Perfection®

Perfection is a high-gloss two-part polyurethane finish. Its high performance formula combines a long lasting abrasion and chemical resistant finish with superb protection from the detrimental effects of UV. For professional quality results made easy.



Code	Color	Quart	2.25 Liter
YHA183 Kit	Platinum	•	
YHA184 Kit	Mediterranean White	•	
YHA192 Kit	Off-White	•	
YHA194 Kit	Oyster White	•	
YHA198 Kit	Matterhorn White	•	
YHA216 Kit	Royal Blue	•	
YHB000 Kit	Snow White	•	•
YHB663 Kit	Jade Mist Green	•	
YHF991 Kit	Mauritius Blue	•	
YHK990 Kit	Flag Blue	•	
YHS056 Kit	Fighting Lady Yellow	•	
YHS070 Kit	Cream	•	
YHS248 Kit	Arctic White	•	
YHS253 Kit	Pearl White	•	
YHS299 Kit	Rochelle Red	•	
YHS936 Kit	Lauderdale Blue	•	
YHY999 Kit	Jet Black	•	



Color range is a print representation only, actual color may vary.

### Brightside® Polyurethane

Single package polyurethane having the superior gloss of a two-part polyurethane and ease of use of an alkyd enamel. Contains a fluoro microadditive to increase stain resistance and ease cleaning.



Code	Color	1/2 Pint	Quart	Gallon
4100	Largo Blue		•	
4152	Yellow		•	
4190	Kingston Gray		•	
4205	Seattle Gray		•	
4207	Bristol Beige		•	
4208	Hatteras Off-White		•	
4217	Grand Banks Beige		•	
4218	Hatteras Off-White (1990)		•	
4237	Sundown Buff		•	
4241	Sapphire Blue		•	
4247	Sea Green		•	
4248	Fire Red	•	•	
4250	Steel Gray		•	
4253	Ocean Blue (C.C. Blue)		•	
4258	Black	•	•	
4259	Blue Glo White		•	•
4316	Dark Blue		•	
4351	Light Blue		•	
4353	Medium Blue		•	
4359	White	•	•	•
4360	Matterhorn White		•	
4381	Off-White		•	
4990	Flag Blue	•	•	



# Topsides and Varnishes

## Topside Finishes

### Interdeck

A tough polyurethane, low sheen coating that provides an excellent slip resistant finish. It contains a fine aggregate that applies easily on all substrates.

Code	Color	Quart
YJB000	White	•
YJB923	Squall Blue	•
YJC089	Cream	•
YJF684	Gray	•
YJG009	Sand Beige	•

### Bilgekote®

A fast drying, low odor, durable coating formulated for application to bilge areas that helps prevent absorption of oil, gasoline or sludge into wood and fiberglass.

Code	Color	Quart	Gallon
YMA100	Gray	•	•
YMA102	White	•	•

## Additives

### Flattening Agents

Code	Product	Quart
YZM914 Kit	Flattening Agent For Two Part Finishes	•
YMA715	Flattening Agent For One Part Finishes	•



#### Top Tip: How to care for your topsides

For maximum longevity of color and gloss of Brightside or Perfection, only use dedicated, non-abrasive boatcare products that contain no silicone when cleaning and maintaining topsides, decks and superstructure. Many household cleaners and some marine soaps, stain removers, teak cleaners and waxes will damage the topside finish. Interlux recommends Awlgrip® Awlwash and Awlcare line. Regular cleaning with these products will help avoid build-up of dirt, grease, salt and other surface contaminants which can slowly cause premature aging of Interlux topside finishes.



## Varnish/Clear Coatings and Wood Treatment

Schooner Gold, Schooner, Compass Clear and Perfection Plus. Unique wood finishes with the ultimate benefits for professionals and boat owners. Schooner Gold features traditional amber high gloss finish but with advanced film build characteristics, obtaining the ultimate finish in fewer coats. For those that think Schooner Gold is too fast drying or thick, we offer Schooner – the original & traditional tung oil varnish with longlasting results. Perfection Plus is the product that gives the most superior longevity and gloss, outperforming traditional varnishes with gloss levels well above 80° even after a year in Florida.

Code	Product	Pint	Quart	Gallon
100	Jet Speed 100		•	
60	Goldspar® Satin Varnish	•	•	
90	Original Varnish		•	
96	Schooner®	•	•	
YVA500	Schooner® Gold	•	•	
YVA950KIT	Perfection® Plus		•	
YVA327	Clear Wood Sealer Base		•	
YVA328	Clear Wood Sealer Curing Agent		•	
YVA502	Compass Clear		•	
1026	Interprime Wood Sealer		•	

### Top Tip: Varnishing

- Avoid excessive stirring or shaking of varnish
- Pour varnish through a filter or through a pair of high-density stockings into a clean container
- Don't use varnish that has sat uncovered for a long period of time. It will have picked up dust
- Keep surfaces to be varnished as dust free as possible. Use tack rags or vacuum for clean up
- Avoid gusty weather and do not varnish wood exposed to direct sunlight
- Avoid using varnish direct from the can, this will cause the varnish to age prematurely and may introduce contamination into the can. Pour the amount of varnish that you expect to use at any one time, into a separate container
- Never leave bare wood exposed too long, as it will absorb moisture from the atmosphere
- High humidity or moisture will spoil the gloss

## WOOD SYSTEM PRODUCTS

### Continued focus on productivity, efficiencies and the ability to improve YOUR margins!

Wood has a beauty that good maintenance will enhance and protect. Interlux varnishes provide outstanding protection while allowing the natural beauty of wood to show through.

#### Perfection® Plus

- Highest gloss available in a clear urethane/ varnish, with superior gloss level even after 12 months in Florida!
- Fully compatible with all hard woods including oily woods like teak and iroko
- State of the art UV package insures superior gloss retention and durability, provides four times longer service life than ordinary varnishes. Polyester urethane resin ensures maximum abrasion resistance
- Ideal for use on interior and exterior woods, plywood and over epoxy resins. Advanced flow additives ensure a superb finish is achieved when brush or spray-applied
- For professional applications apply over Clear Wood Sealer to improve overall speed of completion
- Can be used in combination with Perfection Finish as a glaze coat when professionally sprayed, improving flow, leveling and durability



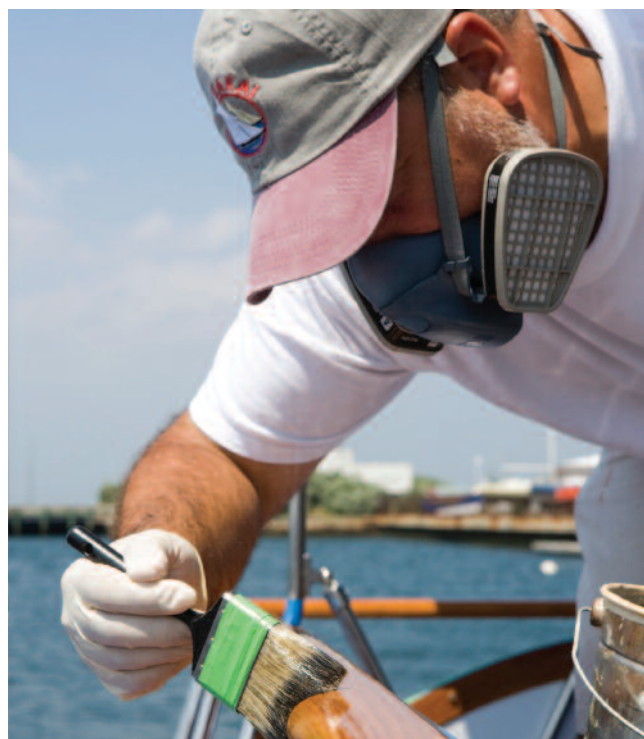
#### Compass Clear®

- High Durability, High Gloss Polyurethane Varnish
- A unique combination of ultra-violet additives, HALS, surface stabilizers and antioxidants to ensure long-term gloss and clarity
- Polyurethane resin adds incredible abrasion, chemical and water resistance
- Superior leveling properties along with silky application allows you to achieve a beautiful, long lasting finish
- A bright, clear, high gloss finish lets the natural color of the wood show through



#### Schooner® Gold

- Advanced UV technology results in superb gloss retention, outperforming Epifanes® Clear in our 12 month tests
- The optimized blend of UV absorbers, HALS and resins insures the exceptional deep gloss and the traditional amber color are retained
- High build formulation achieves professional results in 4-6 coats and, with the additional benefit of reduced sanding requirements, reduces labor
- Formulated for build, thinning may be required to optimize flow
- Our longest lasting one-part varnish ever!



#### Schooner®

- Premium quality, traditional tung oil varnish
- Rich golden color and deep gloss
- Excellent UV protection
- Good flow and self-leveling characteristics for easier application
- Suitable for interiors, exteriors and over existing varnish



# Cetol® Marine, Teak Care, Epiglass, Solvents and Cleaners

## Cetol® Marine Synthetic Finishes

Cetol Marine with 'Next Wave™' UV-absorbing technology is an easy to apply, low maintenance and durable satin translucent protective wood finish for use above the waterline on interior and exterior woods. Cetol Marine provides a flexible breathable finish along with weather protection for wood.



### Cetol® Marine

Produces an attractive dark amber appearance on wood.

Code	Product	Quart	Gallon
IVA300	Cetol Marine	•	•

### Cetol® Marine Light

Produces a light amber appearance on wood.

Code	Product	Quart
IVA290	Cetol Marine Light	•

### Cetol® Marine Natural Teak

Produces a rich golden color that will enhance the natural beauty and grain of wood.

Code	Product	Quart	Gallon
IVA316	Cetol Marine Natural Teak	•	•

### Cetol® Marine Gloss

Provides a high gloss, hard wearing, with 'Next Wave™' UV protection and an easy to clean finish. Developed as a topcoat for Cetol Marine, Cetol Marine Light and Cetol Marine Natural Teak for whenever a gloss finish is desired. Do not use on decks.

Code	Product	Quart
IVA315	Cetol Marine Gloss	•



## Teak Care Products

Traditional Scandinavian formulas.

### Premium Teak Restorer

Water based formula reduces environmental footprint and brightens teak in one step, revealing its natural color and grain.

Code	Product	500ml
YMA015	Premium Teak Restorer	•

### Premium Teak Oil

Traditional Scandinavian blend of oils, easy to apply, fast drying, warm golden color for exterior and interior use.

Code	Product	500ml (Canada)	Liter (US)
YMA016	Premium Teak Oil	•	•



## Paste Wood Filler Stains

### Interstain

Fills the grain of the wood so that the number of coats of varnish can be reduced and it stains the wood to enhance its natural beauty.

Code	Product	Pint
42	Interstain Brown Mahogany	•
573	Interstain CC Red Mahogany	•
1579	Interstain Red Mahogany	•

## Epoxy Resin

### Epiglass®

- A high build, solventless epoxy resin for gelcoat blister repairs and relaminating
- Contains no harmful solvents to migrate into the hull and cause reblistering
- Has three hardeners to meet your schedule or accommodate weather conditions



### Epiglass Resin

Code	Product	Gallon	5 Gallon	52 Gallon
HT9000/1	Resin	•		
HT9000/5	Resin		•	
HT9000/55	Resin			•

### Epiglass Fast Hardener

Formulated for use in colder climates or where users require a faster curing system.

Code	Product	Quart	Gallon	4.3 Gallon
HT9001/QT	Fast Cure	•		
HT9001/1	Fast Cure		•	
HT9001/5	Fast Cure			•

### Epiglass Standard Hardener

The most widely used hardener, formulated for most conditions.

Code	Product	Quart	Gallon	4.3 Gallon
HT9002/QT	STD Cure	•		
HT9002/1	STD Cure		•	
HT9002/5	STD Cure			•

### Epiglass Slow Hardener

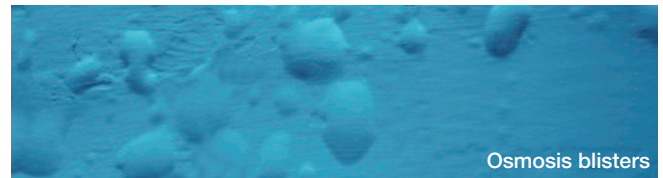
Formulated for use in warmer climates or where users require a longer curing system.

Code	Product	Gallon	4.3 Gallon
HT9003/1	Slow Cure	•	
HT9003/5	Slow Cure		•

### Pumps

Used for dispensing Epiglass at a 4:1 ratio.

Code	Product	
HT55	Pump for 1 Gallon Kits	•
HT80	Pump for 5 Gallon Kit	•
HT100	Table Top Pump – Dispensing Unit	•



Osmosis blisters

### Solvents and Cleaners

Code	Product	Pint	Quart	Gallon
202	Fiberglass Solvent Wash		•	•
216	Special Thinner	•	•	•
333	Brushing Liquid	•	•	•
433	Brush-Ease		•	
2316N	Reducing Sol. (Spray) specified products only		•	•
2333N	Reducing Sol. (Brush) specified products only		•	
YMA601	Fiberglass Surface Prep		•	•
202V	Low V.O.C. Fiberglass Surface Prep			•



# Maintenance Guide

## WHAT IS CLEAN?

The definition of clean varies greatly between boat owners and individual expectations. There are the cosmetic reasons, where most will expect as clean of a waterline as possible and at most, some slime on the bottom of the hull. Due to many variables, it's quite impossible to forecast how exactly one product will perform on every boat. Examples of these variables that affect antifouling performance are:

- The water temperature
- Salinity levels
- Frequency of use (of boat)
- Roughness of hull (peaks and troughs in substrate itself or previous paint film)
- Travel pattern of boat (local, long distance & cruising speed)
- External effects in the water (level of silt, oil or other contamination materials that may be the result of construction and/or discharge procedures.

The most important fouling growth to deter is the severe growth, the hard fouling such as barnacles and grass weed. This type of fouling will cause serious drag and fuel or cruising inefficiencies and once attached, is difficult to remove without damaging the substrate underneath. The premium performance antifoulings generally contain biocides that help fight slime. A small amount of slime won't affect the boat's performance but build-up of further slime may indicate the paint is at the end of its lifetime and the boat should be re-painted before the condition deteriorates. Be pro-active, it's much easier for weed and barnacles to attach themselves to a hull covered in slime.

## CLEANING GUIDELINES – IN WATER MAINTENANCE

As discussed there are several styles or types of antifouling paints and they all prevent fouling but they do this with different technology and as such require slightly different maintenance. Interlux does not recommend in-water cleaning but if it's determined to be necessary, the following should be considered to reduce impact on the coating itself and the environment:

### Hard Matrix Antifoulings and Dual Resin Technology Paints

- ✗ NO scrapers (metal/plastic/wood)
- ✗ NO abrasives (sandpaper/steel wool)
- ✓ Use soft cloth or fleece mitt
- ✓ Scrubber pads, should they be needed, use nothing more aggressive than a White Light Duty Cleaning Pad.

**Note:** *Nearing the end of the paint life cycle, a Blue pad may be necessary.*

### Top Tip

Types of 3M™ Doodlebug™ Scrubber Pads:



- Scotch-Brite™ White Cleaning Pad 8440 – *Light Duty*
- Scotch-Brite™ Ultra Fine Hand Pad 7448 – *Light-Medium Duty*
- Scotch-Brite™ Blue Scrub Pad 8242 – *Medium Duty*

\* *Do not use Brown or Black scrubbing pads as these will remove both active and inert ingredients.*

### Polishing, Ablative and Copolymer Paints

- ✗ NO scrapers (metal/plastic/wood)
- ✗ NO abrasives (sandpaper/steel wool)
- ✓ If required, use soft cloth or a fleece mitt

**Note:** Nearing the end of the paint life cycle, use a White Light Duty 3M™ Doodlebug™ Scrubber pad if required

Please note that Clean Marina Programs and Best Management Practices (BMP) are observed in many areas. Regulations vary by State. Please consult with your local EPA office for up-to-date information.

## FREQUENCY OF INSPECTION AND REPAIR/MAINTENANCE

Seasonal boaters that launch their boat every year for a 5-10 month season (immersion) prior to hauling again for winterization/storage, are recommended to have the hull high pressure, fresh water washed and inspected for any potential repairs. Two fresh coats of antifouling are recommended for each season, to ensure the correct amount of biocide is present to protect against fouling throughout the season. With unique polishing copolymer paints such as the Micron® Technology range, a longer lifetime is achievable. With Micron, it is possible to haul and relaunch without repainting for multiple seasons.

For warmer climates where the boat is left in the water all year around, inspect and repair as necessary. An out of water inspection is recommended every 24-36 months, to assess repairs and recoating needs. For premium protection and long term performance, two coats minimum are recommended and it's always good practice to finish with a third coat in the waterline and leading edges (high wear areas).

# It's more than just paint, it's your business!



You can count on Interlux for far more than quality paint. In fact, we provide the right combination of support, flexibility and technology **to help you promote your business and maximize your profits.**

**This includes:**

- The largest sales team for customer support
- Dealer Advertising Support Programs
- A written warranty for professional applications
- Multiple pack sizes and a choice at all price points
- Innovative solutions for your needs, with complete paint systems
- Skills development support, including training and industry lobbying in regulatory affairs

**With Interlux, it's all part of the package. And in the eyes of your customers, it's a good reflection on you.**

Our World is Water

A large white yacht with a purple hull is being moved by a blue crane in a shipyard. The yacht is the central focus, with its bow pointing towards the viewer. The crane is positioned to the right of the yacht, and a person is visible in the crane's cab. The background shows a clear blue sky and some industrial structures.

## So, it's only paint. Have you tried telling the owner it's only a boat?

We both know how passionate owners can be about their yachts. Together, we not only recognize that passion, we share it. And, let's face it, we both know that paint is a critical part of new-build and yacht maintenance, and that it's not just about aesthetics – it's about protection, it's about performance and it's about reputation. At Interlux® we have spent over a century developing products, training programs and business partnerships with our professional customers, with their customers in mind. So, whether you are preparing a project quote with our technical service team or applying the latest from our range of advanced professional paint systems, you are working with a reliable partner, who cares about your business as much as you do.

### Disclaimer

The information given in this document is not intended to be exhaustive. Any person using this product without first making further enquiries as to the suitability of the product for the intended purpose does so at their own risk and we can accept no responsibility for the performance of the product or for any loss or damage (other than death or personal injury resulting from negligence) arising out of such use. The information contained in this document is liable to modification from time to time in the light of experience and our policy of continuous development.

---

International Paint LLC

✘, Interlux, the AkzoNobel logo and all product names mentioned in this publication are trademarks of AkzoNobel. © AkzoNobel 2013.