



F E E L T H E V I B E W I T H J B L
C A R A U D I O





SOUND THAT
AMPLIFIES LIFE ►

MAKING
EVERY JOURNEY
MEMORABLE ►

WHY UPGRADE
TO JBL ►

The world's finest recording studios, cinema halls and concert venues have always preferred the world's finest audio equipment – JBL. We have distilled years of our superior audio expertise to create for you an unparalleled on-road listening experience. You could opt to simply replace your current car speakers with JBL or you could build a world-class sound system in your car from scratch using JBL components. Either way, the quality of sound, and hence your ride, will improve dramatically.

We spend, on an average, 1 ½ hours in the car every single day. JBL believes that those hours of journey should be uplifting, as opposed to dull and boring. Drawing on our rich audio experience we have designed audio systems for your car that will make you look forward to the journey as much as to the destination. To up your car audio a notch or two, JBL speakers feature increased clarity and musical accuracy. The amplifiers provide headroom and higher system output, while the subwoofers deliver deep bass response. All this makes the JBL Car Audio system accelerate far ahead of competition.

From years of developing professional equipment, and working with car manufacturers, we have mastered the art of great sound. And we bring that same level of audio perfection to car speakers for better depth, clarity, and power. Easily-installed, they are sure to enhance the sound of any car's audio system.



CAR SPEAKERS JBL

From years of developing professional equipment, and working with car manufacturers, we have mastered the art of great sound. And we bring that same level of audio perfection to car speakers for better depth, clarity, and power. Our car audio systems feature best-in-class technologies that deliver performance you can hear and appreciate. Easily-installed, they are sure to enhance the sound of any car's audio system.



CS SERIES

JBL CS7 Series speakers are the no-brainer upgrade for those who want to rock their ride. They're easy to install, feature external crossover housing, fit practically any stock size and can be driven by any factory head unit. And with Plus One woofer cones, they give you the power of a home audio system even on the road.



► **CS742**
100mm (4") 2-way

- Peak power handling: 90W
- RMS power handling: 30W
- Frequency response: 75Hz – 20kHz
- Nominal impedance: 4 ohms
- Sensitivity (2.83V/m): 90dB



► **CS752**
130mm (5-1/4") 2-way

- Peak power handling: 105W
- RMS power handling: 35W
- Frequency response: 70Hz – 20kHz
- Nominal impedance: 4 ohms
- Sensitivity (2.83V/m): 93dB



► **CS762**
165mm (6-1/2") 2-way

- Peak power handling: 135W
- RMS power handling: 45W
- Frequency response: 55Hz – 20kHz
- Nominal impedance: 4 ohms
- Sensitivity (2.83V/m): 93dB



► **CS760C**
165mm (6-1/2") Component

- Peak power handling: 150W
- RMS power handling: 50W
- Frequency response: 55Hz – 20kHz
- Nominal impedance: 4 ohms
- Sensitivity (2.83V/m): 92dB



► **CS769**
152mm x 228mm (6" x 9") 3-way

- Power handling: 210W peak
- RMS power handling: 70W
- Frequency response: 40Hz – 21kHz
- Nominal impedance: 4 ohms
- Sensitivity (2.83V/m): 94dB



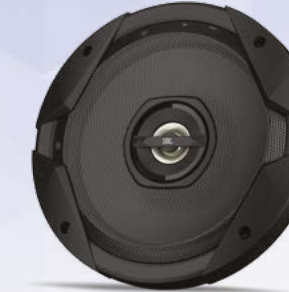
GT SERIES

JBL GT7 Series car speakers are the optimal choice for audiophiles looking to upgrade their car audio at an affordable price. These individually voiced speakers feature Plus One woofer cones for higher sensitivity, increased low-frequency output, and greater musical character. They also allow you to adjust the sound to suit your listening tastes with the help of a tweeter level controller. What's more, they deliver full-range sound with a frequency response of up to 21kHz.



► **GT7-4**
100mm (4") 2-way

- Peak power handling: 90W
- RMS power handling: 30W
- Frequency response: 75Hz – 20kHz
- Nominal impedance: 4 ohms
- Sensitivity (2.83V/m): 90dB



► **GT7-5**
130mm (5-1/4") Component

- Power handling: 105W peak
- RMS power handling: 35W
- Frequency response: 70Hz – 20kHz
- Nominal impedance: 4 ohms
- Sensitivity (2.83V/m): 93dB



► **GT7-5C**
130mm (5-1/4") Component

- Power handling: 135W peak
- RMS power handling: 45W
- Frequency response: 65Hz – 20kHz
- Nominal impedance: 4 ohms
- Sensitivity (2.83V/m): 92dB



► **GT7-6**
165mm (6-1/2") 2-way

- Power handling: 135W peak
- RMS power handling: 45W
- Frequency response: 55Hz – 20kHz
- Nominal impedance: 4 ohms
- Sensitivity (2.83V/m): 93dB



► **GT7-6C**
165mm (6-1/2") Component

- Peak power handling: 150W
- RMS power handling: 50W
- Frequency response: 50Hz – 20kHz
- Nominal impedance: 4 ohms
- Sensitivity (2.83V/m): 92dB



► **GT7-96**
152mm x 228mm (6" x 9") 3-way

- Peak power handling: 210W
- RMS power handling: 70W
- Frequency response: 40Hz – 21kHz
- Nominal impedance: 4 ohms
- Sensitivity (2.83V/m): 94dB



► **GT7-86**
130mm x 178mm (5" x 7") / 150mm x 200mm (6" x 8") 2-way

- Peak power handling: 180W
- RMS power handling: 60W
- Frequency response: 45Hz – 20kHz
- Nominal impedance: 4 ohms
- Sensitivity (2.83V/m): 93dB



GX SERIES

JBL GX Series car speakers are designed to enhance the oomph factor of your car audio. They come with the HARMAN-proprietary tweeter deflector that allows for an angled, rotating speaker which enables sound to travel throughout the car. From ogle-worthy design to a superior high-frequency response, the JBL GX Series has enough features to please even the most discerning audio junkies.



▶ **GX302**
87mm (3-1/2") 2-way

- Peak power handling: 75W
- RMS power handling: 25W
- Frequency response: 90Hz – 21kHz
- Nominal impedance: 2.3 ohms
- Sensitivity (2.83V/m): 89dB



▶ **GX402**
100mm (4") 2-way

- Peak power handling: 105W
- RMS power handling: 35W
- Frequency response: 75Hz – 21kHz
- Nominal impedance: 2.3 ohms
- Sensitivity (2.83V/m): 90dB



▶ **GX502**
130mm (5-1/4") 2-way

- Peak power handling: 135W
- RMS power handling: 45W
- Frequency response: 65Hz – 21kHz
- Nominal impedance: 2.3 ohms
- Sensitivity (2.83V/m): 91dB



▶ **GX602**
165mm (6-1/2") 2-way

- Power handling: 180W peak
- RMS power handling: 60W
- Frequency response: 50Hz – 21kHz
- Nominal impedance: 2.3 ohms
- Sensitivity (2.83V/m): 92dB



▶ **GX600C**
165mm (6-1/2") Component

- Peak power handling: 210W
- RMS power handling: 70W
- Frequency response: 50Hz – 21kHz
- Nominal impedance: 2.3 ohms
- Sensitivity (2.83V/m): 92dB



▶ **GX963**
152mm x 228mm (6" x 9") 3-way

- Peak power handling: 210W
- RMS power handling: 100W
- Frequency response: 45Hz – 21kHz
- Nominal impedance: 2.3 ohms
- Sensitivity (2.83V/m): 94dB



▶ **GX642**
100mm x 150mm (4" x 6") 2-way

- Peak power handling: 120W
- RMS power handling: 40W
- Frequency response: 75Hz – 21kHz
- Nominal impedance: 2.3 ohms
- Sensitivity (2.83V/m): 91dB



▶ **GX862**
130mm x 178mm (5" x 7") /
150mm x 200mm (6" x 8") 2-way

- Peak power handling: 180W
- RMS power handling: 60W
- Frequency response: 50Hz – 21kHz
- Nominal impedance: 2.3 ohms
- Sensitivity (2.83V/m): 92dB



GTO SERIES

JBL GTO Series high-fidelity automotive speakers feature innovative technology engineered for the environment and conditions in today's cars. Using the patented Plus One® woofer cone technology and rugged construction materials like reinforced ABS composite frames and butyl rubber surrounds, GTO Series automotive speakers are the ideal upgrade to any car's audio system. The most popular factory replacement and aftermarket sizes are covered including separate components with woofer, tweeter and passive crossovers. Easily installed and built to last, JBL GTO Series speakers bring music to life in your car.



► **GTO 19T**
19mm (3/4") Tweeter

- Peak power handling: 135W
- RMS power handling: 45W RMS
- Frequency response: 2.5kHz – 21kHz
- Nominal impedance: 3 ohms
- Sensitivity (2.83V/m): 93dB



► **GTO 329**
87mm (3-1/2") 2-way

- Peak power handling: 75W
- RMS power handling: 25W RMS
- Frequency response: 85Hz – 21kHz
- Nominal impedance: 3 ohms
- Sensitivity (2.83V/m): 91dB



► **GTO 429**
100mm (4") 2-way

- Peak power handling: 105W
- RMS power handling: 35W RMS
- Frequency response: 75Hz – 21kHz
- Nominal impedance: 3 ohms
- Sensitivity (2.83V/m): 92dB



► **GTO 529**
130mm (5-1/4") 2-way

- Peak power handling: 135W
- RMS power handling: 45W RMS
- Frequency response: 67Hz – 21kHz
- Nominal impedance: 3 ohms
- Sensitivity (2.83V/m): 92dB



► **GTO 509C**
130mm (5-1/4") 2-way

- Peak power handling: 225W
- RMS power handling: 75W RMS
- Frequency response: 67Hz – 21kHz
- Nominal impedance: 3 ohms
- Sensitivity (2.83V/m): 92dB



► **GTO 629**
165mm (6-1/2") 2-way

- Peak power handling: 180W
- RMS power handling: 60W RMS
- Frequency response: 53Hz – 21kHz
- Nominal impedance: 3 ohms
- Sensitivity (2.83V/m): 93dB



► **GTO 609C**
165mm (6-1/2") 2-way

- Peak power handling: 270W
- RMS power handling: 90W RMS
- Frequency response: 53Hz – 21kHz
- Nominal impedance: 3 ohms
- Sensitivity (2.83V/m): 92dB



► **GTO 6429**
100mm x 150mm (4" x 6") 2-way

- Peak power handling: 135W
- RMS power handling: 45W RMS
- Frequency response: 75Hz – 21kHz
- Nominal impedance: 3 ohms
- Sensitivity (2.83V/m): 92dB



► **GTO 939**
152mm x 228mm (6" x 9") 3-way

- Peak power handling: 300W
- RMS power handling: 100W RMS
- Frequency response: 46Hz – 21kHz
- Nominal impedance: 3 ohms
- Sensitivity (2.83V/m): 94dB



JBL CAR SUBWOOFERS ▶

Our rich experience in developing live stage equipment has helped us in designing subwoofers that are known for their incredible high endurance and reliability. Whether it's a polypropylene woofer cone to ensure maximum efficiency and performance or a progressive spider cone to provide exceptional control and reduce distortion at the highest output levels, JBL subwoofers outperform anything that you may have heard before.



CS AND BASSPRO SUBWOOFERS

Enjoy legendary JBL sound in your car with CS subwoofers. They deliver deep and powerful bass at an entry-level price. What's more, they are compatible with seated, vented and band-pass boxes. Their superior performance, reliability and versatility make them a must-have for your car.

The easy-to-install JBL Basspro subwoofers pump out bass powerful enough to rock your ride. Their patented Slipstream design is optimized for the woofer, amp and enclosure, a feature that is unique to Basspro subwoofers.



► **CS-1204B**
12" (300mm) Closed subwoofer enclosure

- Peak power handling: 1000Watt
- RMS power handling: 250W
- Frequency response: 23Hz – 450Hz
- Nominal Impedance: 4 Ohms
- Sensitivity (2.83V/m): 93dB



► **CSX-1400BP**
12" (300mm) Bandpass subwoofer enclosure

- RMS Power Handling: 350Watt
- Peak Power Handling: 1400Watt
- Frequency response 45Hz – 130Hz
- Nominal Impedance 4 ohms
- Sensitivity (@ 2.83V): 93dB



► **CS1214**
12" (300mm) Subwoofer

- RMS Power Handling: 250Watt
- Peak Power Handling: 1000Watt
- Frequency response: 35Hz – 200Hz
- Nominal Impedance: 4 Ohms
- Sensitivity (2.83V/m): 90 dB



► **GT-BASSPRO12**
Type 12" Cone ported amplified subwoofer

- RMS Power Handling 150Watt
- Frequency response 35Hz–120Hz
- Crossover Frequency/Slope 70Hz–120Hz
- Crossover Slope 12dB/octave



► **CS1214T**
12" (300mm) Tube subwoofer enclosure

- RMS Power Handling: 250Watt
- Peak Power Handling: 1000Watt
- Frequency response: 35Hz – 200Hz
- Nominal Impedance: 4 Ohms
- Sensitivity (2.83V/m): 90 dB



Coming soon

► **BASSPRO SL**
8" Cone powered, Underseat woofer enclosure

- RMS Power Handling 125Watt
- Frequency response 35Hz–120Hz
- Crossover Frequency/Slope 50Hz – 120Hz
- Crossover Slope 12dB/octave



SERIES II

Series II subwoofers provide thumping bass without making you pay through the nose. In addition to being affordably priced, they feature the exclusive SSI technology that allows for simple system building. They also use progressive spiders for the best possible control and feature polypropylene woofer cones to keep distortion low, while keeping the output deep.



▶ **S2-1024**
10" (250mm) Subwoofer

- Peak power handling: 100Watt
- RMS power handling: 250Watt
- Frequency response 30Hz – 175Hz
- Nominal Impedance 2 or 4 ohms, switch-selectable
- Sensitivity (@ 2.83V): 92dB



▶ **S2-1224**
12" (300mm) Subwoofer

- Peak power handling: 1100Watt
- RMS power handling: 275Watt
- Frequency response 25Hz – 175Hz
- Nominal Impedance 2 or 4 ohms, switch-selectable
- Sensitivity (@ 2.83V): 93dB



▶ **S2-1224SS**
12" (300mm) Slipstream ported enclosure

- Peak power handling: 1100Watt
- RMS power handling: 275Watt
- Frequency response 25Hz – 175Hz
- Nominal Impedance 2 or 4 ohms, switch-selectable
- Sensitivity (@ 2.83V): 93dB



JBL CAR AMPLIFIERS ▶

With almost seven decades of experience in bringing live music to life, JBL has adapted many professional technologies for use in our car amplifiers. They provide unmatched ease of installation, configuration and calibration for clean powerful sound.



GX AND GTR AMPLIFIERS

JBL GX amplifiers will transform your on-road listening experience with new levels of power and clarity. On board active crossovers and separate line and speaker-level inputs make it easy to integrate the new GX amps into the rest of your system. Carefully engineered Bass Boost circuits deliver the power you crave, whether you're upgrading a factory system or building one from scratch.

The Bluetooth-enabled GTR amplifiers offer besides the legendary JBL sound, full handsfree calling & music streaming capability They use HARMAN's exclusive Clari-fi sound restoration technology to improve the playback of compressed digital music from your smartphone. In addition, they feature a Party Mode that allows up to three passengers to share their playlists by connecting to the system wirelessly.



▶ GX-A3001 Mono Subwoofer Amplifier

- Number of Channels: Mono / subwoofer
- 4-Ohm Power Output: 200W rms x 1, <1% THD+N
- Total Peak Power Output: 415W
- Frequency Response: 10Hz – 320Hz (-3dB)



▶ GX-A602 2-channel Full-Range Amplifier

- Number of Channels: 2 channels
- 4-Ohm Power Output: 60W rms x 2, <1% THD+N
- Total Peak Power Output: 280W
- Frequency Response: 20 – 200kHz (-3dB)



▶ GX-A604 4-channel Full-Range Amplifier

- Number of Channels: 4 channels
- 4-Ohm Power Output: 60W rms x 4, <1% THD+N
- Total Peak Power Output: 435W
- Frequency Response: 20 – 200kHz (-3dB)

▶ GTR-601 Mono Subwoofer Amplifier

- Number of Channels: 2 channels
- 4-Ohm Power Output: 400Wrms x 1, <0.1% THD+N
- Total Peak Power Output: 1500Watt

▶ GTR-104 4-Channel Full Range Amplifier

- Number of Channels: 4 channels
- 4-Ohm Power Output: 100Wrms x 4, <0.1% THD+N
- Total Peak Power Output: 1500Watt

▶ GTR-7535 5-Channel System Amplifier

- Number of Channels: 5 Channels
- 4-Ohm Power Output 75Wrms x 4, <0.1% THD+N / 190Wrms x 1, <0.1% THD+N
- Total Peak Power Output: 2300Watt



Coming soon



JBL TRIP ►

The JBL Trip is designed to make phone calls safely while driving. HARMAN's patented noise cancellation technology allows for crystal clear phone calls even with high levels of road and wind noise. Apart from supporting Siri and Google Now, it can also receive safety and navigation prompts via Bluetooth from various navigation and ADAS apps. Furthermore, when you leave the car you can take it with you and enjoy your music with the famous JBL sound anywhere and even make your phone calls loud & clear.



Coming soon

► JBL Trip Portable Bluetooth Hands-Free system

- Transducer: 1 x 40mm
- Rated Power: 3.2W
- Frequency Response: 160Hz to 20KHz
- Battery Type: Lithium-ion Polymer (3.8V, 1200mAh)
- Music Playtime: Up to 8 hours
(varies by volume level and audio content)
- Call Time: Up to 20 hours
- Standby Time: Up to 800 hours
- Connectors: Micro USB
- Bluetooth Version: 3.0
- Dimensions (H x W x D): 134mm x 64mm x 34mm
- Weight: 230g

SPEAKERS	CS742	CS752	CS762	CS769	CS760C
Type	4" Coaxial Car Audio Loudspeaker	5-1/4" Coaxial Car Audio Loudspeaker	6-1/2" Coaxial Car Audio Loudspeaker	6" x 9" Three-Way Car Audio Loudspeaker	6-1/2" Component Car Audio Loudspeaker System
High-Frequency Transducer	1" titanium-laminate dome	1" titanium-laminate dome	1" titanium-laminate dome	1" titanium-laminate dome	1" titanium-laminate dome
Power Handling, RMS	30W	35W	45W	70W	50W
Power Handling, Peak	90W	105W	135W	210W	150W
Frequency Response	75Hz – 20kHz	70Hz – 20kHz	55Hz–20kHz	40Hz – 21kHz	55Hz – 20kHz
Nominal Impedance	4 ohms	4 ohms	4 ohms	4 ohms	4 ohms
Sesitivity (2.83@1m)	90dB	93dB	93dB	94dB	92dB
Crossover	Onboard	Onboard	Onboard	Onboard	Onboard
Controls/Adjustments	None	None	None	None	None
External Diameter (Metric, English)	166mm (6-1/2")	235mm x 165mm (9-1/4" x 6-1/2")	166mm (6-1/2")	235mm x 165mm (9-1/4" x 6-1/2")	130mm (5-1/8")
Mounting Cutout Diameter (Metric, English)	143mm (5-5/8")	221mm x 150mm (8-23/32" x 5-29/32")	143mm (5-5/8")	221mm x 150mm (8-23/32" x 5-29/32")	120mm (4-3/4")
Mounting Depth (Metric, English)	59mm (2-5/16")	75mm (2-31/32")	59mm (2-5/16")	75mm (2-31/32")	58mm (2-9/32")
Grill	No	No	No	No	No

SPEAKERS	GT7-4	GT7-5	GT7-5C	GT7-6	GT7-6C	GT7-86	GT7-96
Type	4" Coaxial Car Audio Loudspeaker	5-1/4" Coaxial Car Audio Loudspeaker	5-1/4" Three-Way Car Audio Loudspeaker	6-1/2" Coaxial Car Audio Loudspeaker	6-1/2" Component Car Audio Loudspeaker System	5" x 7" / 6" x 8" Coaxial Car Audio Loudspeaker	6" x 9" Three-way Car Audio Loudspeaker
High-Frequency Transducer	1" titanium-laminate dome	1" titanium-laminate dome	1" titanium-laminate dome	1" titanium-laminate dome	1" titanium-laminate dome	1" titanium-laminate dome	1" titanium-laminate dome
Power Handling, RMS	30W	35W	35W	45W	50W	60W	70W
Power Handling, Peak	90W	105W	105W	135W	150W	180W	210W
Frequency Response	75Hz – 20kHz	70Hz – 20kHz	70Hz – 21kHz	55Hz–20kHz	50Hz – 20kHz	45Hz – 20kHz	40Hz – 21kHz
Nominal Impedance	4 ohms	4 ohms	4 ohms	4 ohms	4 ohms	4 ohms	4 ohms
Sesitivity (2.83@1m)	90dB	93dB	93dB	93dB	92dB	93dB	94dB
Crossover	Onboard	Onboard	Onboard	Onboard	Separate network	Onboard	Onboard
Controls/Adjustments	None	None	None	None	None	None	None
External Diameter (Metric, English)	166mm (6-1/2")	235mm x 165mm (9-1/4" x 6-1/2")	130mm (5-1/8")	166mm (6-1/2")	166mm (6-9/16")	144mm x 229mm (5-11/16" x 9-1/6")	164mm x 235mm (6-1/2" x 9-5/16")
Mounting Cutout Diameter (Metric, English)	143mm (5-5/8")	221mm x 150mm (8-23/32" x 5-29/32")	120mm (4-3/4")	143mm (5-5/8")	143mm (5-11/16")	182mm (7-3/16")	221mm (8-3/4")
Mounting Depth (Metric, English)	59mm (2-5/16")	75mm (2-31/32")	58mm (2-9/32")	59mm (2-5/16")	59mm (2-3/8")	56mm (2-7/32")	58mm (2-9/32")
Grill	No	No	No	No	No	No	No

SPEAKERS	GX302	GX402	GX502	GX602	GX642	GX862	GX963	GX600C
Type	3-1/2" Coaxial Car Audio Loudspeaker	4" Coaxial Car Audio Loudspeaker	5-1/4" Coaxial Car Audio Loudspeaker	6-1/2" Coaxial Car Audio Loudspeaker	4" x 6" Coaxial Car Audio Loudspeaker	5" x 7" / 6" X 8" Coaxial Car Audio Loudspeaker	6" x 9" Three-Way Car Audio Loudspeaker	6-1/2" Car Audio Component Speaker System
High-Frequency Transducer	1" titanium-laminate dome	1" titanium-laminate dome	1" titanium-laminate dome	1" titanium-laminate dome	1" titanium-laminate dome	1" titanium-laminate dome	1" titanium-laminate dome	1" titanium-laminate dome
Power Handling, RMS	25W	35W	45W	60W	40W	60W	100W	70W
Power Handling, Peak	75W	105W	135W	180W	120W	180W	210W	210W
Frequency Response	90Hz – 21kHz	75Hz – 21kHz	65Hz – 21kHz	50Hz – 21kHz	75Hz – 21kHz	50Hz – 21kHz	45Hz – 21kHz	50Hz – 21kHz
Nominal Impedance	2.3 ohms	2.3 ohms	2.3 ohms	2.3 ohms	2.3 ohms	2.3 ohms	2.3 ohms	2.3 ohms
Sesitivity (2.83@1m)	89dB	90dB	91dB	92dB	91dB	92dB	94dB	92dB
Crossover	Onboard	Onboard	Onboard	Onboard	Onboard	Onboard	Onboard	Onboard
Controls/Adjustments	None	None	None	None	None	None	None	None
External Diameter (Metric, English)	89mm (3-9/16")	104mm (4-1/8")	130mm (5-1/8")	165mm (6-1/2")	102mm x 159mm (4-1/16" x 6-5/16")	143mm x 220mm (5-11/16" x 8-11/16")	164mm x 235mm (6-1/2" x 9-5/16")	166mm (6-1/2")
Mounting Cutout Diameter (Metric, English)	79mm (3-1/8")	-	120mm (4-3/4")	129mm (5-1/8")	86mm x 145mm (3-7/16" x 5-3/4")	143mm x 220mm (5-11/16" x 8-11/16")	164mm x 235mm (6-1/2" x 9-5/16")	166mm (6-1/2")
Mounting Depth (Metric, English)	36mm (1-7/16")	47mm (1-7/8")	57mm (2-1/4")	52mm (5-1/8")	47mm (1-7/8")	61mm (2-7/16")	74mm (2-7/8")	52mm (2-1/16")
Grill	No	No	Yes	Yes	No	No	Yes	Yes

SPEAKERS	GTO19T	GTO329	GTO429	GTO529	GTO629	GTO939	GTO6429	GTO509C	GTO609C
Type	3/4" Car Audio Component Tweeter	3-1/2" (87mm) 2-Way Car Audio Loudspeaker	4" 2-Way Car Audio Loudspeaker	5-1/4" 2-Way Car Audio Loudspeaker	165mm (6-1/2") 2-Way Car Audio Loudspeaker	6" x 9" 3-Way Car Audio Loudspeaker	4" x 6" 2-Way Car Audio Loudspeaker	5-1/4" 2-Way Car Audio Component System	6-1/2" 2-Way Car Audio Component System
High-Frequency Transducer	Edge-driven soft dome tweeter	Textile balanced dome tweeter	Textile balanced dome tweeter	Edge-driven soft dome tweeter with level adjustment	Edge-driven soft dome tweeter with level adjustment	Edge-driven dome super tweeter	Balanced soft dome tweeter	Edge-driven soft dome tweeter	Edge-driven soft dome tweeter
Power Handling, RMS	45W	25W	35W	45W	60W	100W	45W	75W	1000W
Power Handling, Peak	135W	75W	105W	135W	180W	300W	135W	225W	270W
Frequency Response	2.5Hz – 21kHz	85Hz – 21kHz	75Hz – 21kHz	67Hz – 21kHz	53Hz – 21kHz	46Hz – 21kHz	75Hz – 21kHz	67Hz – 21kHz	53Hz – 21kHz
Nominal Impedance	3 ohms	3 ohms	3 ohms	3 ohms	3 ohms	3 ohms	3 ohms	3 ohms	3 ohms
Sesitivity (2.83@1m)	93dB	91dB	92dB	92dB	93dB	94dB	92dB	92dB	93dB
Crossover	4.0 kHz	5.0 kHz	5.0 kHz	4.5 kHz	3.5 kHz	3.0 kHz	4.5 kHz	3.8 kHz	4.0 kHz
Controls/Adjustments	-	-	-	Tweeter level, 0dB / +3dB T	weeter level, 0dB / +3dB	Tweeter level, 0dB / +3dB	-	Tweeter level, 0dB / +3dB	Tweeter level, 0dB / +3dB
External Diameter (Metric, English)	47mm (1-7/8")	91mm (3-9/16")	100mm (3-15/16")	131mm (5-3/16")	158mm (6-1/4")	243mm x 172mm (9-9/16" x 6-13/16")	156mm x 95mm (6-1/8" x 3-3/4")	Woofer: 158mm (6-1/4") Tweeter: 47mm (1-7/8")	Woofer: 175mm (6-7/8") Tweeter: 47mm (1-7/8")
Mounting Cutout Diameter (Metric, English)	41mm (1-5/8")	79mm (3-1/8")	120mm (4-3/4")	119mm (4-11/16")	129mm (5-1/16")	219mm x 149mm (8-5/8" x 5-7/8")	146mm x 84mm (5-3/4" x 3-5/16")	Woofer: 118mm (4-11/16") Tweeter: 41mm (1-5/8")	Woofer: 127mm (5") Tweeter: 41mm (1-5/8")
Mounting Depth (Metric, English)	20mm (13/16")	35mm (1-3/8")	48mm (1-15/16")	54mm (2-1/8")	50mm (2")	71mm (2-13/16")	43mm (1-11/16")	Woofer: 57mm (2-1/4") Tweeter: 20mm (13/16")	Woofer: 52mm (2-1/16") Tweeter: 20mm (13/16")
Grill	Yes	No	Yes	Yes	Yes	Yes	No	Yes	Yes

WOOFERS	CS1204B	CS1214	CS1214T	CSX-1400BP
Type	12" (300mm) Subwoofer closed enclosure	12" (300mm) Subwoofer	12" (300mm) Tube subwoofer enclosure	12" (300mm) Bandpass subwoofer enclosure
Power Handling, RMS	250Watt	250Watt	250Watt	350Watt
Power Handling, Peak	1000Watt	1000Watt	1000Watt	1400Watt
Sensitivity	(2.83V/1m) 93dB	(2.83V/1m) 90 dB	(2.83V/1m) 90 dB	(@ 2.83V): 93dB
Frequency response	23Hz – 450Hz	35Hz – 200Hz	35Hz – 200Hz	45Hz – 130Hz
Impedance	4 Ohms	4 Ohms	4 Ohms	4 ohms
Mounting Depth	6-1/4" (159mm)	6-1/16" (153mm)	-	-
Cutout Diameter	11-1/8" (283mm)	11" (279mm)	-	-
Outside Dimensions	-	-	Tube Diameter: 330mm	(LxDxH): 18-3/4" x 16-1/4" x 15-3/8" (475mm x 412mm x 390mm)

WOOFERS	S2-1024	S2-1224	S2-1224SS
Type	10" (250mm) Subwoofer	12" (300mm) Subwoofer	12" (300mm) Slipstream ported enclosure
Power Handling, RMS	250Watt	275Watt	275Watt
Power Handling, Peak	100Watt	1100Watt	1100Watt
Sensitivity	(@ 2.83V): 92dB	(@ 2.83V): 93dB	(@ 2.83V): 93dB
Frequency response	30Hz – 175Hz	25Hz – 175Hz	25Hz – 175Hz
Impedance	2 or 4 ohms, switch-selectable	2 or 4 ohms, switch-selectable	2 or 4 ohms, switch-selectable
Mounting Depth	5-5/8" (142mm)	6-1/2" (165mm)	-
Cutout Diameter	9" (228mm)	11-1/4" (285mm)	-
Outside Dimensions	-	-	(L x D x H): 23-5/8" x 13" x 16-3/8" (600mm x 330mm x 415mm)

AMPLIFIED	GT-BASSPRO12	BASSPRO SL
Type	12" Cone ported amplified subwoofer	8" Cone powered, under seat woofer enclosure
Power Handling, RMS	150Watt	125Watt
Sensitivity	50mV–4V (line-level input) 0.4V–16V (high-level input)	0.2V – 2V (Line-Level Input) 2V – 20V (High-Level Input)
Frequency response	35Hz–120Hz	35Hz – 120Hz
Crossover Frequency/Stope	70Hz–120Hz	50Hz – 120Hz
Crossover Slope	12dB/octave	12dB/octave
Bass Boost	0 – 12dB adjustable	0dB to +9dB @ 70Hz
Controls	Crossover frequency, phase, bass boost, level, level remote	Crossover frequency, phase, bass boost, level, level remote
Connections	Line-level inputs, hi-level inputs, remote volume control	Line-level inputs, hi-level inputs, remote volume control
Dimensions	570mm x 369mm x 305mm (22-7/16" x 14-1/2" x 12")	13-9/16" x 9-7/8" x 2-13/16" (344mm x 250mm x 71mm)
Current Draw (Full Power)	13.5A	12A
Crrent Draw (Idle)	<500mA	<800mA
Fuse	Fuse: 25A	Fuse: 20A

AMPLIFIERS	GX-602	GX-A604	GX-A3001
Number of Channels	2 channels	4 channels	5 Channels
4-Ohm Power Output	60W rms x 2, <1% THD+N	60W rms x 4, <1% THD+N	200W rms x 1, <1% THD+N
2-Ohm Power Output	85W rms x 2, <1% THD+N	85W rms x 4, <1% THD+N	300W rms x 1, <1% THD+N
4-Ohm Bridged Power Output	170W x 1 into 4 ohms	170W x 2 into 4 ohms	-
Total Peak Power Output	280W	435W	415W
Signal-to-Noise Ratio	93dB (ref rated output @ 4ohms)	93dB (ref rated output @ 4 ohms)	98dB (ref rated output @ 4 ohms)
Frequency Response	20Hz - 20kHz ±1dB	20Hz - 20kHz ±1dB	10Hz - 320Hz
Input Sensitivity	200mV-20V	200mV-20V	200mV-20V
Variable Electronic Crossover	Yes	Yes	Yes
Variable Bass Boost	Yes	Yes	No
Input Connections	L & R line-Level (RCA)	4 x L & R line-Level; Front L & R, Rear L & R (RCA)	L & R line-Level (RCA)
Speaker Connections	2	4	1
Signal Output Connections	No	L & R line-level (summed)	Line-level (pas-through)
Dimensions (LxWxH)	198mmx206mmx52mm	300mmx206mmx52mm	291mmx206mmx52mm

AMPLIFIERS	GTR-601	GTR-104	GTR-7535
Number of Channels	2 channels	4 channels	5 Channels
4-Ohm Power Output	400Wrms x 1, <0.1% THD+N	100Wrms x 4, <0.1% THD+N	75Wrms x 4, <0.1% THD+N 190Wrms x 1, <0.1% THD+N
2-Ohm Power Output	600Wrms x 1, <0.1% THD+N	150Wrms x 4, <0.1% THD+N	105Wrms x 4, <0.1% THD+N 350Wrms x 1, <0.3% THD+N
4-Ohm Bridged Power Output	-	350Wrms x 2, <1% THD+N	300Wrms x 2, <1% THD+N
Total Peak Power Output	1500Watt	1500Watt	2300Watt
Signal-to-Noise Ratio	>80dB (ref 1W output @ 2Ω)	>75dB (ref 1W output @ 4Ω)	>75dB x4 (ref 1W output @ 4Ω) >80dB x 1 (ref 1W output @ 2Ω)
Frequency Response	10 - 320Hz	10 - 100kHz	10 - 100k (main) 10 - 320 (sub)
Input Sensitivity	200mV-20V	200mV-20V	200mV-20V
Variable Electronic Crossover	Yes	Yes	Yes
Variable Bass Boost	Bass EQ	Bass EQ	Bass EQ
Input Connections	RCA low level; in-line adapter for high level	RCA low level; in-line adapter for high level	RCA low level; in-line adapter for high level
Speaker Connections	1	4	5
Signal Output Connections	Full range stereo	Full range stereo	No
Dimensions (LxWxH)	266 x 180 x 55	266 x 180 x 55	336 x 180 x 55

