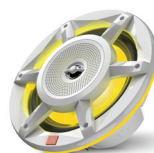




# Stadium Marine Speakers

Take JBL concert level sound to the high seas



## Stay Clear, Get Loud, Go Deep.

JBL's Stadium Marine loudspeakers leverage JBL's world class audio engineering and music reproduction with purpose-built marine loudspeakers that will survive the rigors of the harsh marine environment. Choose from the most popular sizes for boats and watercraft. The 6-1/2" coaxial, 8" three-way convertible speaker system and 10" woofer have Plus One™ polypropylene woofer and midrange cones, Mylar tweeter domes (Except Subwoofer), one piece cast polymer baskets, sealed magnets, and rubber woofer surrounds for high SPL performance. Wind, water or engine noise will not drown them out. Speakers are UV resistant in a marine grade IPX3 (IPX5 from front) weather resistant and include RGB perimeter illumination and go through 300 hours of salt spray testing. And they're ready to make amazing music on the water. Whether it's a daily scrub down, a picnic in a quiet cove or an all-out race across high swells, JBL has the right configuration for your craft.

## Features

- ▶ Plus One™ Woofer Cones
- ▶ Convertible Design
- ▶ Perimeter Illumination
- ▶ SSI (Switch-Selectable Impedance)
- ▶ Mylar Tweeters with Integrated Grilles
- ▶ One-piece Polymer basket
- ▶ High Sensitivity
- ▶ Voicing of Speakers
- ▶ Harman Standard Reliability Testing
- ▶ JBL at an Affordable Price



# Stadium Marine Speakers

Take JBL concert level sound to the high seas

## Features and Benefits

### Plus One™ Woofer Cones

Plus One cones provide more overall speaker-cone area than other cones in its class giving them higher sensitivity, increased low-frequency output and more distinguished musical character.

### Convertible Design (MW8030 and MB8030)

To increase loudspeaker acoustics and installation versatility, the 8" (200mm) Marine Three-Way Convertible can be coaxially mounted or separated and installed as a component system. This is handy for working around placement option restrictions.

### Perimeter Illumination

Unique and eye-catching RGB illumination can display seven colors out of the box – or an almost unlimited number of colors when connected to an external lighting controller.

### SSI (Switch-Selectable Impedance)

New Stadium Marine 10" (250mm) woofer features an exclusive dual impedance switch that lets you choose either 2- or 4-ohm load impedance option. SSI lets you reconfigure your system with the flip of a switch. (Not available from any other manufacturer.)

### Mylar Tweeters with Integrated Grilles

Weather resistant tweeters deliver smooth highs and increased power handling for more natural sound from vocals, cymbals, horns and pianos. (Grill mounted tweeters allow the front of the woofer cones to be sealed.)

### One-piece Polymer basket

The polymer basket is durable over time even after prolonged exposure to sun, salt and moisture. Rubber surrounds are more reliable than foam and offer better edge protection.

### High Sensitivity

A high sensitivity rating combined with above-average continuous power handling makes it one of the loudest boat speakers available without sacrificing clarity, fullness and musical character.

## Voicing of Speakers

Speakers are individually voiced to ensure they deliver JBL's true sonic signature. This means that specifications as well as speaker characteristics are considered when tuning and authenticating the signature JBL sound. This is part of the development process spearheaded by the leading transducer engineers in the world to provide the best listening experience at any price point.

## Harman Standard Reliability Testing

JBL speakers undergo a testing process that would destroy lesser speakers. JBL freezes them, bakes them, shakes them, blasts them with ultraviolet light and drives them at full power for days at a time.

## JBL at an Affordable Price

This is JBL – one of the most innovative and legendary companies in audio. JBL is one of the top-selling car speaker brands in the world – obviously, this is no coincidence. If you know audio, you know JBL in your car, your home – why not in your boat?





# Stadium Marine Speakers

Take JBL concert level sound to the high seas



## What's in the Box

### MW6520, MB6520: JBL – 6-1/2" (160mm integrated grilles) Coaxial Speakers

6" (160mm) woofers, pr.  
12 x Screw  
12 x Speed clip  
1 x Spanner  
2 x Closed cell foam gasket  
2 x LED cable  
2 x JBL logo badge (Black)  
2 x JBL logo badge (Orange)  
1 x Owner's Manual  
1 x RoHS sheet

### MW8030, MB8030: JBL – 8" (200mm) Marine Three-Way Convertible Speaker System

8" (200mm) woofers, pr.  
Flush mount adapter with Integrated grille, pr.  
12 x Screw  
12 x Speed clip  
1 x Spanner  
2 x Closed cell foam gasket  
1 x Twin pin tool  
2 x LED cable  
2 x Cable  
2 x JBL logo badge (Black)  
2 x JBL logo badge (Orange)  
1 x Owner's Manual  
1 x RoHS sheet

### MW1000, MB1000: JBL – 10" (250mm) Stadium Marine Woofer

10" (250mm), ea., with integrated grille  
6 x Screw  
6 x Speed clip  
1 x Spanner  
1 x Closed cell foam gasket  
1 x LED cable  
1 x JBL logo badge (Black)  
1 x JBL logo badge (Orange)  
1 x Owner's Manual  
1 x RoHS sheet

## Technical Specifications

### MW6520, MB6520: JBL – 6-1/2" (160mm) Stadium Marine Speaker

Power Handling: 100 watts RMS, 300 watts peak power  
Sensitivity: 92dB at 2.83 volts  
Frequency Response: 40 – 25kHz  
Voice Coil Diameter: 1 in. (25.5mm)  
Impedance: 3 ohm impedance

### MW8030, MB8030: JBL – 8" (200mm) Stadium Marine Three-Way Convertible Speaker System

Power Handling: 200 watts RMS, 500 watts peak power  
Sensitivity: 92dB at 2.83 volts  
Frequency Response: 30 – 22kHz  
Voice Coil Diameter: 1 in. (25.5mm)  
Impedance: 3 ohm impedance

### MW1000, MB1000: JBL – 10" (250mm) Stadium Marine Woofer

Power Handling: 300 watts RMS, 900 watts peak power  
Sensitivity: 89dB at 2.83 volts  
Frequency Response: 20 – 2KHz  
Voice Coil Diameter: 2 in. (49.5mm)  
Impedance: 2 and 4-ohms, Switch Selectable Impedance (SSI™)

