



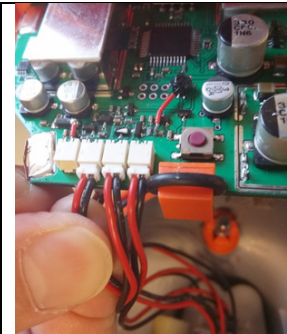
## Disassemble, Disconnect and Recycle Tron 60S/ Tron 60GPS



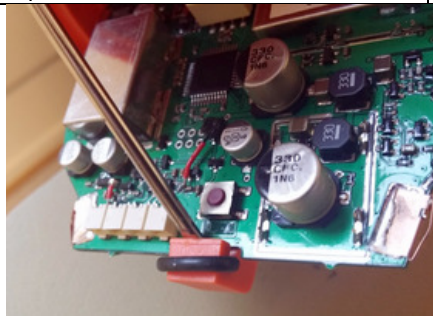
Press a screwdriver within the equator belt hatch



About to be opened



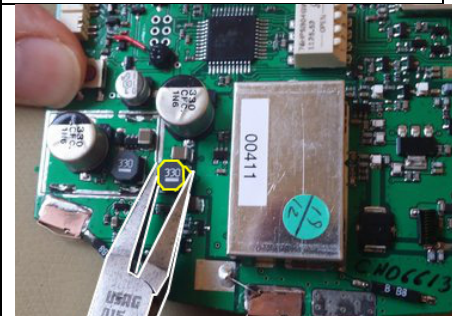
Disconnect battery (4 connectors)



Use screwdriver to flip loose electronic




Loose



Tear off coil (Yellow outline)  
(Makes the electronics unusable)

Recycle the different parts:

	Part	How	Note
1	Battery	Do NOT throw in waste bin, but recycle as "Haz.mat" (Dangerous goods).	Contains high energy Lithium Metal batteries of type Energizer L91, see MSDS/PSDS.
2	Electronics	Do NOT throw in waste bin, but recycled according to legal procedures regarding waste electronic:	May contain: <ul style="list-style-type: none"> <li>• Lead (Pb)</li> <li>• Copper(Cu)</li> <li>• Tin (Sn)</li> <li>• Other metals</li> </ul>
3	Plastic	Contains mostly Polycarbonate (Lexan)	



# SOS

## USE ONLY IN EMERGENCY

THE EPIRB WILL RELEASE AUTOMATICALLY FROM THE BRACKET IF THE VESSEL SINKS.

FOR MANUAL RELEASE:

