



BLU SERIES

UPG No. 40922

Sealed Lead-Acid Power Cell

Absorbant Glass Mat (AGM) technology for superior performance. Valve regulated, spill proof construction allows safe operation in any position. Approved for transport by air. D.O.T., I.A.T.A., F.A.A. and C.A.B. certified. U.L. recognized under file number MH 20567.

HC800-BLU



Due to continuous improvements to our products, product may vary slightly from depiction.

Specification

Nominal Voltage	12 volts		
Nominal Capacity	77° F (25° C)		
20-hr. (1.75A)	35.0 Ah		
10-hr. (3.26A)	32.6 Ah		
5-hr. (5.96A)	29.8 Ah		
1-hr. (21.0A)	21.0 Ah		
Max. Wattage	800 W		
Approximate Weight	23.2 lbs (10.5 kg)		
Internal Resistance (approx.)	10mΩ		
Shelf Life (% of normal capacity at 77° F (25° C))			
3 Months	6 Months	12 Months	
91%	82%	64%	
Temperature Dependency of Capacity	(20 hour rate)		
104° F	77° F	32° F	5° F
102%	100%	85%	65%
AGM Operational Temperature			
Charge	0°C to 40°C		
Discharge	-15°C to 45°C		
AGM Storage Temperature	-15°C to 40°C		

Charge Method (Constant Voltage)

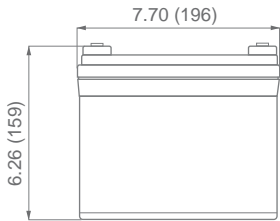
Cycle Use (Repeating Use)

Initial Current	10.5 A or smaller
Control Voltage	14.6-14.8 V

Float Use

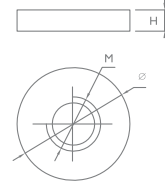
Control Voltage	13.6-13.8 V
-----------------	-------------

Physical Dimensions: in (mm)



L: 7.70 in (196 mm)
W: 5.12 in (130 mm)
H: 6.26 in (159 mm)
 Tolerances are +/- 0.04 in. (+/- 1mm) and +/- 0.08 in. (+/- 2mm) for height dimensions. All data subject to change without notice.

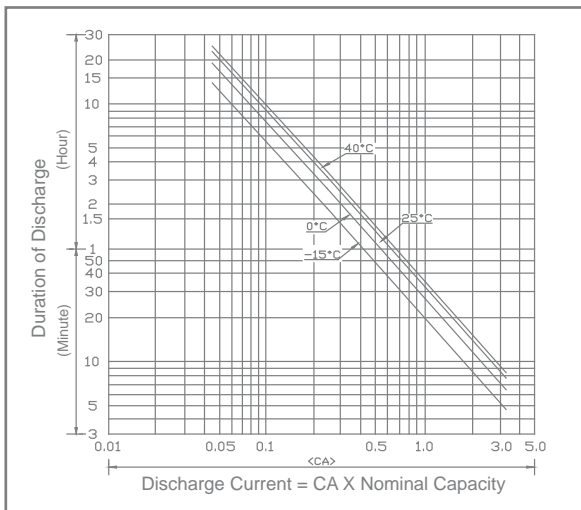
TERMINALS (Internal Thread 3/8")



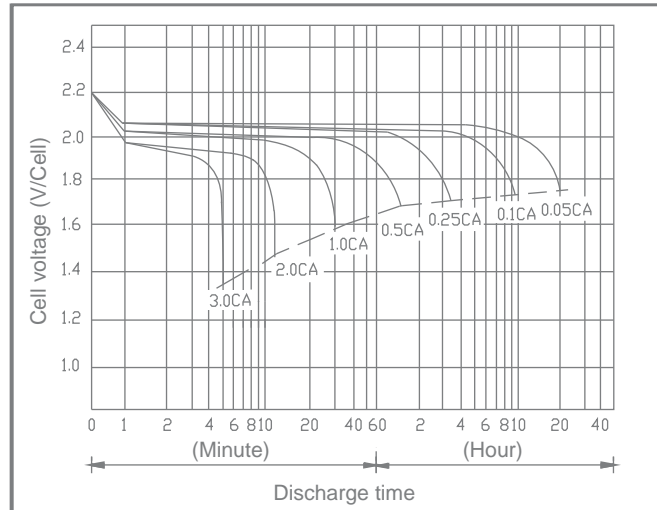
Type	Dimension	M	Ø	H
Internal Thread		7.88 mm .312 in	15.8 mm 0.62 in	3.68 mm 0.14 in

Polarity
Positive on Left

DISCHARGE TIME VS. DISCHARGE CURRENT



DISCHARGE CHARACTERISTICS



All specifications are subject to change without notice.



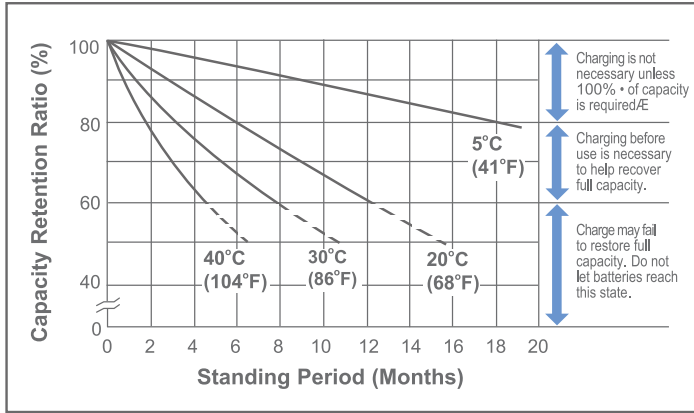
BLU SERIES

Sealed Lead-Acid Power Cell

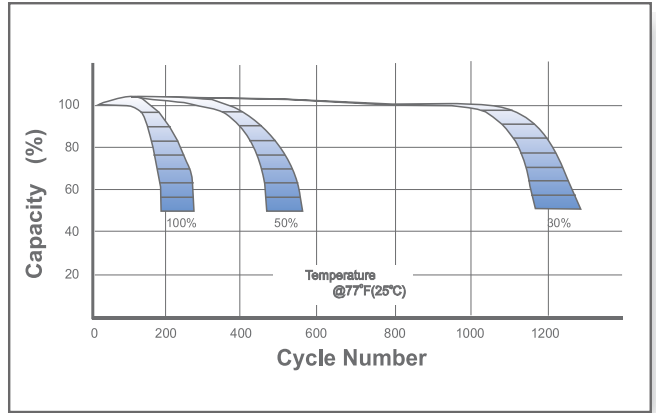
UPG No. 40922

HC800-BLU

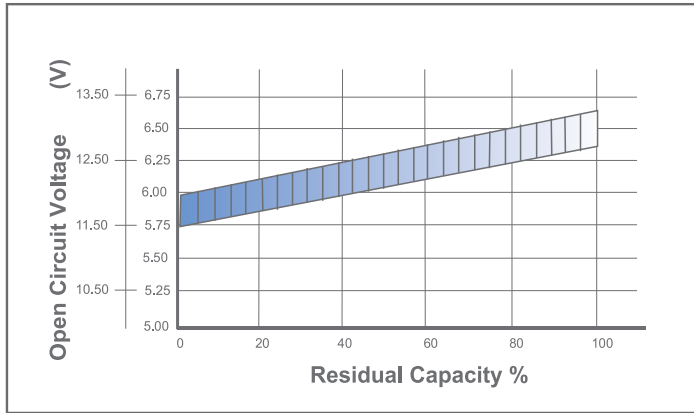
SHELF LIFE & STORAGE



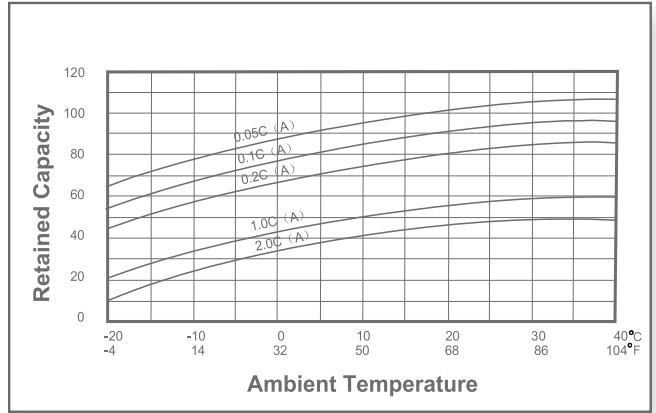
CYCLE LIFE VS DEPTH OF DISCHARGE



OPEN CIRCUIT VOLTAGE VS RESIDUAL CAPACITY



EFFECT OF TEMPERATURE ON CAPACITY



CHARGE CURRENT & FINAL DISCHARGE VOLTAGE

Application	Charge Voltage(V/Cell)			Max.Charge Current	Final Discharge Voltage V/Cell	Discharge Current(A)	Final Discharge Voltage V/Cell	Discharge Current(A)	Final Discharge Voltage V/Cell	Discharge Current(A)
	Temperature	Set Point	Allowable Range							
Cycle Use	25°C(77°F)	2.45	2.43~2.47	0.30C	1.75	0.2C>(A)	1.70	0.2C<(A)<0.5C	1.60	0.5C<(A)<1.0C
Standby	25°C(77°F)	2.28	2.27~2.30		1.30	>1.0C				

