

High Performance Trim Tab Kits

12-Volt / Single & Dual Actuator



High Performance (HP) Trim Tab Kits 12-Volt / Single Actuator

This powerful, unique series is designed for multiple engine applications with limited transom space. The contoured blade design allows extra space for engines to turn while reducing cavitation to the props. Boat lengths 16' (4.9 m) to 40' (12.2 m).



Electro-Polished
15049-101

Blades are constructed of Electro-Polished 7 gauge (4.6 mm) laser cut 304 stainless steel with heavy duty hinge with 3/8" (9.5 mm) diameter hinge pin. Full transom back plate with mechanical strain-relief cable seals, welded on stainless steel upper & adjustable lower actuator mounting brackets, 3/8" (9.5 mm) stainless steel mounting bolts. 3.75" (9.5 cm) sacrificial anodes installed.

High Performance (HP) Trim Tab Kits 12-Volt / Dual Actuator

Same powerful features and unique blade design as the single HP series with double the actuator support for larger, faster boats. Boat lengths 24' (7.3 m) to 52' (15.8 m).



Electro-Polished
15051-101

Blades are constructed of Electro-Polished 7 gauge (4.6 mm) laser cut 304 stainless steel, heavy duty hinge with 3/8" (9.5 mm) diameter hinge pin. Full transom back plate with mechanical strain-relief cable seals, welded on stainless steel upper & adjustable lower actuator mounting brackets, 3/8" (9.5 mm) stainless steel mounting bolts. 3.75" (9.5 cm) sacrificial anodes installed.

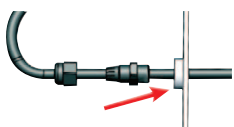
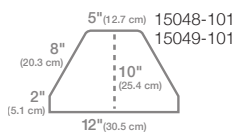
SIZE DESCRIPTION
 (L) = Length of tab
 (W) = Width of hinge
 Size description to be used with chart below.

Kits include:

- ▶ (2) 7-gauge stainless steel Electro-Polished blades
- ▶ (2) 15056-001 XD Extreme Duty actuators with 6' (1.8 m) leads & Deutsch connectors
- ▶ Lenco owner's/installation manual
- ▶ **Note:** Boat-mounting hardware to be supplied by the customer
- ▶ **Note:** Actuator extension harnesses not in kits, must be purchased separately (2 required) see page 32

SHIPPED FULLY ASSEMBLED

Back Plate Dimensions



The actuator leads pass through the water-tight mechanical strain-relief cable seal and the back plate before passing through the transom. This applies to all products with back plates.

High Performance Trim Tab Kits - 12-volt Single Actuator Kits

Lenco Part#	L" X W"	Boat Length	Min. Transom Height
15048-101	14" x 12"	16' - 32'	10.5" (26.7 cm)
15049-101	18" x 12"	20' - 40'	10.5" (26.7 cm)

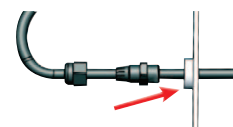
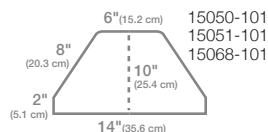
SIZE DESCRIPTION
 (L) = Length of tab
 (W) = Width of hinge
 Size description to be used with chart below.

Kits include:

- ▶ (2) 7-gauge stainless steel Electro-Polished blades
- ▶ (4) 15056-001 XD Extreme Duty actuators with 6' (1.8 m) leads & Deutsch connectors
- ▶ Lenco owner's/installation manual
- ▶ **Note:** Boat-mounting hardware to be supplied by the customer
- ▶ **Note:** Actuator extension harnesses not in kits, must be purchased separately (4 required) see page 32

SHIPPED FULLY ASSEMBLED

Back Plate Dimensions



The actuator leads pass through the water-tight mechanical strain-relief cable seal and the back plate before passing through the transom. This applies to all products with back plates.

High Performance Trim Tab Kits - 12-volt Dual Actuator Kits

Lenco Part#	L" X W"	Boat Length	Min. Transom Height
15050-101	21" x 14"	24' - 42'	10.5" (26.7 cm)
15051-101	25" x 14"	28' - 46'	10.5" (26.7 cm)
15068-101	29" x 14"	30' - 52'	10.5" (26.7 cm)

SWITCH KIT SOLD SEPARATELY

See Lenco catalog page 20

SWITCH KITS SOLD SEPARATELY

See Lenco catalog page 20 through 21

Learn more about trim tabs, hydrofoils and thrusters we have.

WE MAKE THE BEST BOATS BETTER!