



Custom Inshore SPEED SPIN®

CI200, CI300, CI400

Driven by innovation –
Fueled with Passion
Feel the Difference!

Reel Specifications

Model	Weight (oz.)	Max Drag (lb)	Gear Ratio	Line Capacity (yd./lb.)	RPT*
CI200	8.8	20	6.2:1	160/8	32"
CI300	9.0	22	6.2:1	160/10	34"
CI400	10.2	22	6.2:1	160/10	37"

*Recovery per turn.



7 Bearing System

HS
6.2:1
HIGH SPEED

SPEED GEARS

winn

C60 CARBON

FEATURES:

- Premium 7-stainless steel bearing system includes Zero Reverse® one-way clutch bearing
- Aluminum body and sideplate with flush and drain port
- High strength and lightweight C60 Carbon skeletal speed rotor with aluminum bail wire
- S-curve oscillation system
- Lightweight double anodized braid ready knurled aluminum spool
- High strength Speed Gears with strong, lightweight aluminum pinion cut on precision Hamai CNC gear hobbing machines
- Durable stainless steel main shaft
- Smooth sealed carbon fiber drag system
- Aluminum handle with winn dri-tac handle knob
- Speed Lube for exceptional smoothness and uninterrupted performance in all weather conditions from extreme heat to freezing cold
- Adjustable for left or right hand retrieve.

Maintenance and Care

While applying lubricant to your Speed Spin® reel, avoid using multi-purpose oil. Use lightweight silicone based oils or greases made for fishing reels. Apply oil to all bearings and the main shaft. Apply grease to the bushings, pinion gears and main gears.

After usage your reel should be inspected for dirt or sand and cleaned if excessive buildup is present. If your reel has come in contact with saltwater it is important to flush all parts with water, dry and re-lubricate your reel. Through diligent cleaning and maintenance your Lew's® reel will provide you with years of reliability and sound performance.

ATTENTION BRAIDED LINE USERS!

If your Lew's® Spinning reel has a knurled spool or rubber arbor (designed for tying braided line directly to the spool), you can tie braid directly to your spool using a uni-knot.

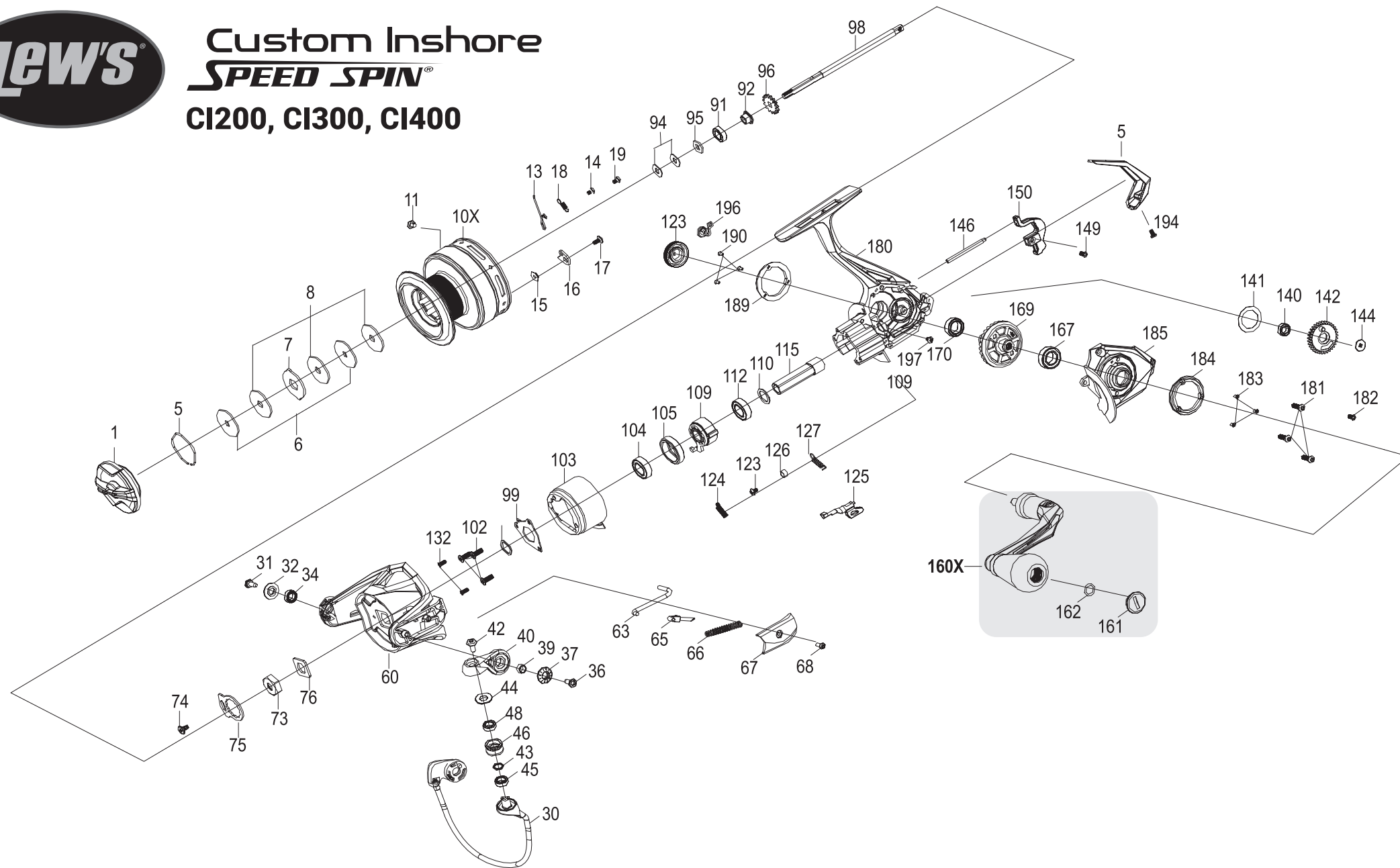
If your Lew's® spinning reel does not have a knurled spool or rubber arbor, you will need to first tie on and spool at least 20 revolutions of monofilament line, with either a back-to-back uni-knot or an Albright knot.

Continue to spool your reel as normal, keeping strong tension on the line to ensure the line is firmly wound onto the spool to keep from "digging in" to underlying line layers when pressure is put on the line from fighting fish.

FAILURE TO PROPERLY SPOOL BRAIDED LINE ONTO YOUR REELS SPOOL WILL RESULT IN LINE SLIPPAGE, AND THE IMPRESSION YOUR DRAG IS NOT WORKING PROPERLY.



Custom Inshore SPEED SPIN[®] CI200, CI300, CI400



KEY#	PART NAME	KEY#	PART NAME	KEY#	PART NAME
1	DRAG KNOB ASSEMBLY	65	BAIL SLIDER	127	ANTI-REVERSE STEM SPRING
5	RETAINING RING	66	BAIL SPRING	128	ANTI-REVERSE LEVER
6	KEYED DRAG WASHER	67	BAIL ARM CAP	140	OSCILLATION GEAR BEARING
7	EARED DRAG WASHER	68	BAIL ARM COVER SCREW (A)	141	OSCILLATION GEAR WASHER
8	DRAG WASHER	73	ROTOR NUT	142	OSCILLATION GEAR
10X	SPOOL ASSEMBLY	74	ROTOR LOCK SCREW	144	OSCILLATION GEAR SCREW
11	LINE CLIP	75	ROTOR NUT RETAINER	146	SLIDER GUIDE PIN
13	LINE CLIP RETAINER	76	ROTOR NUT WASHER	149	SLIDER SHAFT SCREW
14	LINE CLIP RETAINER SCREW	91	BUSHING	150	SLIDER
15	CLICK WASHER	92	SPACER	160X	HANDLE ASSEMBLY
16	CLICK DOG	94	LINE LAY SHIM	161	HANDLE KNOB CAP
17	CLICK DOG SCREW	95	STACK WASHER	162	HANDLE KNOB CAP SEAL
18	CLICK SPRING	96	CLICK RING/GEAR	167	BEARING
19	CLICK SPRING SCREW	98	MAIN SHIM	169	DRIVE GEAR
30	BAIL WIRE ASSEMBLY	99	ROTOR SHIM	170	BEARING
31	HOLDER SCREW/PIN	100	BODY HEAD COVER SCREW	173	HANDLE SCREW CAP
32	HOLDER SCREW COVER	101	BODY HEAD COVER	180	BODY
34	HOLDER BUSHING	102	BODY HEAD COVER SCREW	181	BODY SIDEPLATE SCREW (L1)
36	BAIL ARM SCREW PIN	103	BEARING COVER	182	BODY SIDEPLATE SCREW (L2)
37	BAIL ARM SCREW COVER	104	BEARING	183	SIDE COVER TRIM SCREW (L3)
39	BAIL ARM BUSHING	105	BEARING HOLDER	184	SIDE COVER TRIM (L)
40	BAIL ARM	106	SPACER	185	BODY SIDEPLATE (L)
42	BAIL SCREW	109	ONE-WAY CLUTCH BEARING	189	SIDE COVER TRIM
43	LINE ROLLER WASHER	110	WASHER	190	SIDE COVER TRIM SCREW (R3)
44	LINE ROLLER SPACER	112	BEARING	193	REAR COVER TRIM
45	LINE ROLLER BUSHING	115	PINION GEAR	194	REAR COVER TRIM SCREW (A)
46	LINE ROLLER	116	PINION BUSHING	196	LUBE PORT CAP
48	LINE ROLLER BEARING	123	ANTI-REVERSE STUD SCREW	197	LUBE PORT CAP SCREW
60	ROTOR	124	ANTI-REVERSE PAWL SPRING		
63	TRIP BAR	126	ANTI-REVERSE STEM SEALING RING		