



Custom SPEED SPIN®

CS100

**Driven by innovation –
Fueled with Passion
Feel the Difference!**



Reel Specifications

| Model | Weight (oz.) | Max Drag (lb) | Gear Ratio | Line Capacity (yd./lb.) | RPT* |
|-------|--------------|---------------|------------|-------------------------|------|
| CS100 | 7.5 | 8 | 5.2:1 | 90/6 | 25" |

*Recovery per turn.

FEATURES:

- Strong and lightweight aluminum body and sideplate
- High strength and lightweight C60 Carbon skeletal speed rotor with aluminum bail wire
- Premium 10-stainless steel bearing system includes Zero Reverse one-way clutch bearing
- Lightweight double anodized braid ready knurled aluminum spool
- High strength Speed Gears™ with strong, lightweight aluminum pinion cut on precision Hamai CNC gear hobbing machines
- Durable stainless steel main shaft
- Smooth sealed carbon fiber drag system
- Aluminum handle with Winn® Dr-Tac knob
- Speed Lube for exceptional smoothness and uninterrupted performance in all weather conditions from extreme heat to freezing cold
- Adjustable for left or right hand retrieve

ATTENTION BRAIDED LINE USERS!

If your Lew's® Spinning reel has a knurled spool or rubber arbor (designed for tying braided line directly to the spool), you can tie braid directly to your spool using a uni-knot.

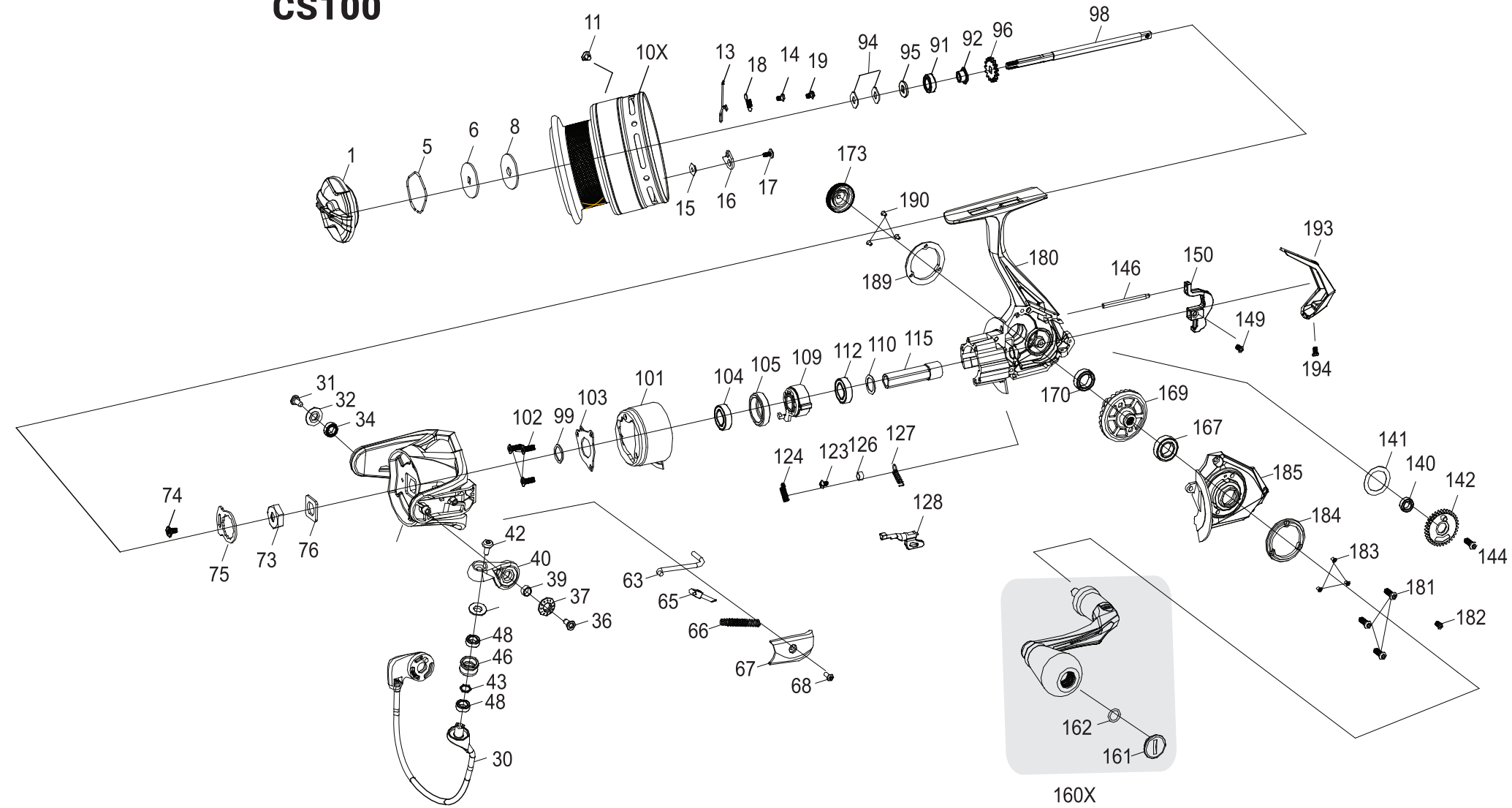
If your Lew's® spinning reel does not have a knurled spool or rubber arbor, you will need to first tie on and spool at least 20 revolutions of monofilament line, with either a back-to-back uni-knot or an Albright knot.

Continue to spool your reel as normal, keeping strong tension on the line to ensure the line is firmly wound onto the spool to keep from "digging in" to underlying line layers when pressure is put on the line from fighting fish.

FAILURE TO PROPERLY SPOOL BRAIDED LINE ONTO YOUR REELS SPOOL WILL RESULT IN LINE SLIPPAGE, AND THE IMPRESSION YOUR DRAG IS NOT WORKING PROPERLY.



Custom SPEED SPIN® CS100



| KEY# | PART NAME | KEY# | PART NAME | KEY# | PART NAME |
|------|--------------------------|------|-----------------------------|------|------------------------------|
| 1 | DRAG KNOB ASSEMBLY | 66 | BAIL SPRING | 141 | OSCILLATION GEAR WASHER |
| 5 | RETAINING RING | 67 | BAIL ARM CAP | 142 | OSCILLATION GEAR |
| 6 | KEYED DRAG WASHER | 68 | BAIL ARM COVER SCREW (A) | 144 | OSCILLATION GEAR SCREW |
| 7 | EARED DRAG WASHER | 73 | ROTOR NUT | 146 | SLIDER GUIDE PIN |
| 8 | DRAG WASHER | 74 | ROTOR LOCK SCREW | 149 | SLIDER SHAFT SCREW |
| 10X | SPOOL ASSEMBLY | 75 | ROTOR NUT RETAINER | 150 | SLIDER |
| 11 | LINE CLIP | 76 | ROTOR NUT WASHER | 160X | HANDLE ASSEMBLY (2 BEARINGS) |
| 13 | LINE CLIP RETAINER | 91 | BUSHING | 161 | HANDLE KNOB CAP |
| 14 | LINE CLIP RETAINER SCREW | 92 | SPACER | 162 | HANDLE KNOB CAP SEAL |
| 15 | CLICK WASHER | 94 | LINE LAY SHIM | 167 | BEARING |
| 16 | CLICK DOG | 95 | STACK WASHER | 169 | DRIVE GEAR |
| 17 | CLICK DOG SCREW | 96 | CLICK RING/GEAR | 170 | BEARING |
| 18 | CLICK SPRING | 98 | MAIN SHAFT | 173 | HANDLE SCREW CAP |
| 19 | CLICK SPRING SCREW | 99 | ROTOR SHIM | 180 | BODY |
| 30 | BAIL WIRE ASSEMBLY | 100 | BODY HEAD COVER SCREW | 181 | BODY SIDEPLATE SCREW (L1) |
| 31 | HOLDER SCREW/PIN | 101 | BODY HEAD COVER | 182 | BODY SIDEPLATE SCREW (L2) |
| 32 | HOLDER SCREW COVER | 102 | BODY HEAD COVER SCREW | 183 | SIDE COVER TRIM SCREW (L3) |
| 34 | HOLDER BUSHING | 103 | BEARING COVER | 184 | SIDE COVER TRIM (L) |
| 36 | BAIL ARM SCREW PIN | 104 | BEARING | 185 | BODY SIDEPLATE (L) |
| 37 | BAIL ARM SCREW COVER | 105 | BEARING HOLDER | 189 | SIDE COVER TRIM |
| 39 | BAIL ARM BUSHING | 109 | ONE-WAY CLUTCH BEARING | 190 | SIDE COVER TRIM SCREW (R3) |
| 40 | BAIL ARM | 110 | WASHER | 193 | REAR COVER TRIM |
| 42 | BAIL SCREW | 112 | BEARING | 194 | REAR COVER TRIM SCREW (A) |
| 43 | LINE ROLLER WASHER | 115 | PINION GEAR | | |
| 44 | LINE ROLLER SPACER | 123 | ANTI-REVERSE STUD SCREW | | |
| 46 | LINE ROLLER | 124 | ANTI-REVERSE PAWL SPRING | | |
| 48 | LINE ROLLER BEARING (2) | 126 | ANTI-REVERSE STEM SEAL RING | | |
| 60 | ROTOR | 127 | ANTI-REVERSE STEM SPRING | | |
| 63 | TRIP BAR | 128 | ANTI-REVERSE LEVER | | |
| 65 | BAIL SLIDER | 140 | OSCILLATION GEAR BEARING | | |



Custom SPEED SPIN®



CS200, CS300, CS400

Driven by innovation –
Fueled with Passion
Feel the Difference!

Reel Specifications

| Model | Weight (oz.) | Max Drag (lb) | Gear Ratio | Line Capacity (yd./lb.) | RPT* |
|-------|--------------|---------------|------------|-------------------------|------|
| CS200 | 9.0 | 20 | 6.2:1 | 160/8 | 32" |
| CS300 | 9.2 | 22 | 6.2:1 | 160/10 | 34" |
| CS400 | 10.4 | 24 | 6.2:1 | 190/12 | 37" |

*Recovery per turn.

FEATURES:

- Strong and lightweight aluminum body and sideplate with flush and drain port
- Lightweight high strength C60 carbon skeletal rotor
- Premium 10-stainless steel bearing system includes Zero Reverse® one-way clutch bearing
- Lightweight double anodized braid ready knurled aluminum spool
- Speed Gears™ with strong, lightweight aluminum pinion cut on precision Hamai CNC gear hobbing machines
- Durable stainless steel main shaft
- Smooth sealed carbon fiber drag system
- Aluminum handle with Winn® Dr-Tac knob
- Speed Lube for exceptional smoothness and uninterrupted performance in all weather conditions from extreme heat to freezing cold
- Adjustable for left or right hand retrieve

Maintenance and Care

While applying lubricant to your Speed Spin® reel, avoid using multi-purpose oil. Use lightweight silicone based oils or greases made for fishing reels. Apply oil to all bearings and the main shaft. Apply grease to the bushings, pinion gears and main gears.

After usage your reel should be inspected for dirt or sand and cleaned if excessive buildup is present. If your reel has come in contact with saltwater it is important to flush all parts with water, dry and re-lubricate your reel. Through diligent cleaning and maintenance your Lew's® reel will provide you with years of reliability and sound performance

ATTENTION BRAIDED LINE USERS!

If your Lew's® Spinning reel has a knurled spool or rubber arbor (designed for tying braided line directly to the spool), you can tie braid directly to your spool using a uni-knot.

If your Lew's® spinning reel does not have a knurled spool or rubber arbor, you will need to first tie on and spool at least 20 revolutions of monofilament line, with either a back-to-back uni-knot or an Albright knot.

Continue to spool your reel as normal, keeping strong tension on the line to ensure the line is firmly wound onto the spool to keep from "digging in" to underlying line layers when pressure is put on the line from fighting fish.

FAILURE TO PROPERLY SPOOL BRAIDED LINE ONTO YOUR REELS SPOOL WILL RESULT IN LINE SLIPPAGE, AND THE IMPRESSION YOUR DRAG IS NOT WORKING PROPERLY.



Custom SPEED SPIN® CS200, CS300, CS400

| KEY# | PART NAME | KEY# | PART NAME | KEY# | PART NAME |
|------|--------------------------|------|-----------------------------|------|------------------------------|
| 1 | DRAG KNOB ASSEMBLY | 66 | BAIL SPRING | 141 | OSCILLATION GEAR WASHER |
| 5 | RETAINING RING | 67 | BAIL ARM CAP | 142 | OSCILLATION GEAR |
| 6 | KEYED DRAG WASHER | 68 | BAIL ARM COVER SCREW (A) | 144 | OSCILLATION GEAR SCREW |
| 7 | EARED DRAG WASHER | 73 | ROTOR NUT | 146 | SLIDER GUIDE PIN |
| 8 | DRAG WASHER | 74 | ROTOR LOCK SCREW | 149 | SLIDER SHAFT SCREW |
| 10X | SPOOL ASSEMBLY | 75 | ROTOR NUT RETAINER | 150 | SLIDER |
| 11 | LINE CLIP | 76 | ROTOR NUT WASHER | 160X | HANDLE ASSEMBLY (2 BEARINGS) |
| 13 | LINE CLIP RETAINER | 91 | BUSHING | 161 | HANDLE KNOB CAP |
| 14 | LINE CLIP RETAINER SCREW | 92 | SPACER | 162 | HANDLE KNOB CAP SEAL |
| 15 | CLICK WASHER | 94 | LINE LAY SHIM | 167 | BEARING |
| 16 | CLICK DOG | 95 | STACK WASHER | 169 | DRIVE GEAR |
| 17 | CLICK DOG SCREW | 96 | CLICK RING/GEAR | 170 | BEARING |
| 18 | CLICK SPRING | 98 | MAIN SHAFT | 173 | HANDLE SCREW CAP |
| 19 | CLICK SPRING SCREW | 99 | ROTOR SHIM | 180 | BODY |
| 30 | BAIL WIRE ASSEMBLY | 100 | BODY HEAD COVER SCREW | 181 | BODY SIDEPLATE SCREW (L1) |
| 31 | HOLDER SCREW/PIN | 101 | BODY HEAD COVER | 182 | BODY SIDEPLATE SCREW (L2) |
| 32 | HOLDER SCREW COVER | 102 | BODY HEAD COVER SCREW | 183 | SIDE COVER TRIM SCREW (L3) |
| 34 | HOLDER BUSHING | 103 | BEARING COVER | 184 | SIDE COVER TRIM (L) |
| 36 | BAIL ARM SCREW PIN | 104 | BEARING | 185 | BODY SIDEPLATE (L) |
| 37 | BAIL ARM SCREW COVER | 105 | BEARING HOLDER | 189 | SIDE COVER TRIM |
| 39 | BAIL ARM BUSHING | 109 | ONE-WAY CLUTCH BEARING | 190 | SIDE COVER TRIM SCREW (R3) |
| 40 | BAIL ARM | 110 | WASHER | 193 | REAR COVER TRIM |
| 42 | BAIL SCREW | 112 | BEARING | 194 | REAR COVER TRIM SCREW (A) |
| 43 | LINE ROLLER WASHER | 115 | PINION GEAR | 196 | LUBE PORT CAP |
| 44 | LINE ROLLER SPACER | 123 | ANTI-REVERSE STUD SCREW | 197 | LUBE PORT CAP SCREW |
| 46 | LINE ROLLER | 124 | ANTI-REVERSE PAWL SPRING | | |
| 48 | LINE ROLLER BEARING (2) | 126 | ANTI-REVERSE STEM SEAL RING | | |
| 60 | ROTOR | 127 | ANTI-REVERSE STEM SPRING | | |
| 63 | TRIP BAR | 128 | ANTI-REVERSE LEVER | | |
| 65 | BAIL SLIDER | 140 | OSCILLATION GEAR BEARING | | |

