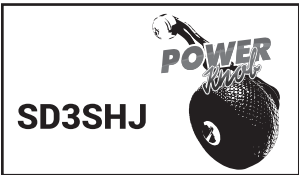




# SUPERDUTY® 300 SERIES SPEED SPOOL®

SD3H, SD3SH



**7 Bearing System**

## Reel Specifications

Model	Weight (oz)	Gear Ratio	Line Capacity (yd./lbs.)	RPT* (in.)
SD3H	9.2	6.5:1	190/14	31
SD3SH	9.2	7.2:1	190/14	35
SD3SHJ†	9.9	7.2:1	190/14	35

\*Recovery per turn  
†Power handle

### FEATURES:

- One-piece aluminum frame and handle sideplate
- Premium 7-bearing system with stainless steel double shielded ball bearings and Zero Reverse® bearing
- Externally adjustable Multi-Setting Brake system (MSB)
- Braid-ready, forged, double anodized, deep capacity spool
- High strength solid brass Speed Gears, cut on precision Hamai CNC gear hobbing machines
- Double anodized aluminum spool tension adjustment
- Rugged carbon fiber drag system provides up to 24lbs. of drag power
- Audible click, bowed, double anodized aluminum star drag
- Bowed, heavy duty 100mm aluminum reel handle with Lew's® Winn Dri Tac knobs, J models feature counter balanced handle with a single Winn Dri Tac knob
- Combat style grip thumb bar
- Saltwater compatible with 3 drain ports
- Line out drag alarm
- Bowed 95 mm aluminum handle with Winn Dri-Tac knobs

## Performance – Right out of the Box!

Your Speed Spool® reel is designed for performance and functionality. From the way it conforms to your hand, to the way it reacts crisply and effortlessly to your command, you'll know the minute you grab onto your Speed Spool® that you've got a quality reel.

Your Speed Spool reel exploits several new developments which will allow you to set yourself apart from the competition.



**Speed Gears** Lew's Speed Gears are cut on precision Hamai CNC gear hobbing machines resulting in an efficient drive train with less gear

**One-piece Aluminum Frame** Your Speed Spool® reel utilizes a one-piece all aluminum frame that you'll never have to worry about frame torque or twisting.

**Machine Forged Double Anodized Aluminum Spool** The machine forged double anodized aluminum spool of your Speed Spool reel is engineered for deep capacity and double anodized for superior oxidation and abrasion resistance.



**ZRXTRA System** The handle on your Speed Spool® reel will only rotate forward for rock solid hook sets. When you release the handle, it will hold in position because of the Zero-Reverse bearing backed up by a strong mechanical system that will hold up to the rigors of hard hook sets and heavy drag settings.



**Multi-Setting Braking System (MSB)** In order to combat backlash your Speed Spool® reel features both an externally-adjustable, full-release magnetic braking system as well as an internally adjustable centrifugal brake system. The magnetic brakes give consistent braking throughout the entire cast and are adjusted by the palming sideplate dial. The centrifugal brakes provide initial braking at the beginning of the cast to reduce backlash and can be turned off to reduce braking by removing the palming sideplate and pushing the white pin(s) towards the center of the spool until they click. To turn the back on push the white pin(s) away from the center of the spool until they click.

**Cast Control System** A second feature exists to prevent backlash, the Cast Control System. An adjustment knob is found next to the star drag. The function saddles the spool shaft with steady pressure in order to stabilize spool speed.

To calibrate the system, reel your lure in until it rests on the tip of the rod, then tighten the knob until taut. Depress the thumb bar, and holding the rod horizontally loosen the knob slowly until the lure begins to descend. The spool should continue to spin after the lure contacts the ground, but should not complete more than one full rotation. If the spool does not continue to spin, the knob is too tight.

If the spool completes more than one rotation, the knob is too loose. Repeat until you have achieved the desired results.



**Bowed 95 mm (100mm SD3SHJ Model) Aluminum Handle** Our bowed aluminum handle will give you all the cranking power you need. The Winn Dri-Tac knobs are an added bonus known for a comfortable fit and ease for all day fishing.

Speed Spool SuperDuty Baitcast reels are designed to be **Super Strong. Driven by innovation – Fueled with Passion**  
**Feel the Difference!**

## ATTENTION BRAIDED LINE USERS!

If your Lew's® Baitcast reel has pre-drilled holes in the spool, you may tie your braid directly to the spool, by passing the braid thru the provided holes and tying a uni-knot.

If your Lew's® baitcast reel does not have pre-drilled holes in the spool, you will need to first tie on and spool at least 20 revolutions of monofilament line, and then tie your braided line to the monofilament line, with either a back-to-back uni-knot or an Albright knot.

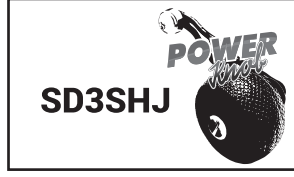
Continue to spool your reel as normal, keeping strong tension on the line to ensure the line is firmly wound onto the spool to keep from "digging in" to underlying line layers when pressure is put on the line from fighting fish.

**FAILURE TO PROPERLY SPOOL BRAIDED LINE ONTO YOUR REELS SPOOL WILL RESULT IN LINE SLIPPAGE, AND THE IMPRESSION YOUR DRAG IS NOT WORKING PROPERLY.**

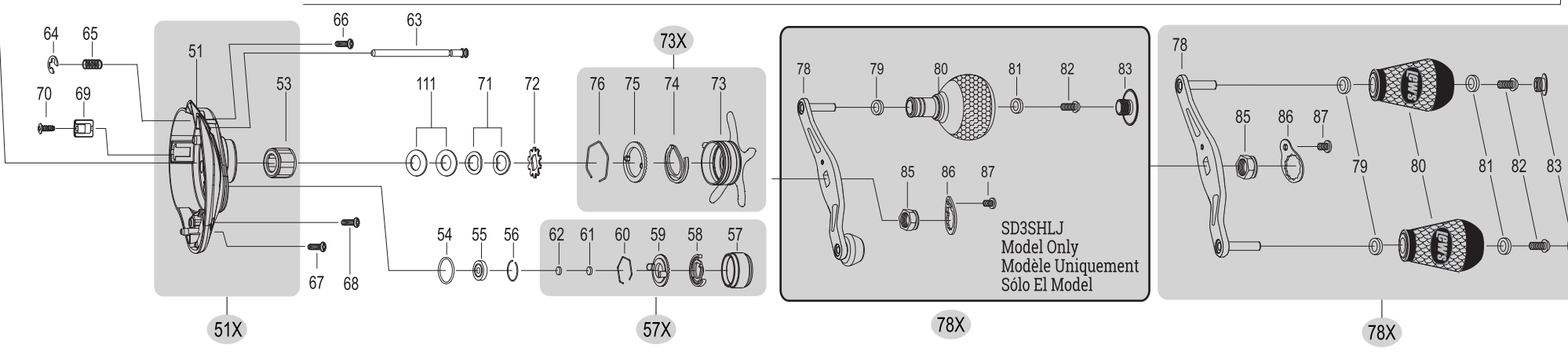
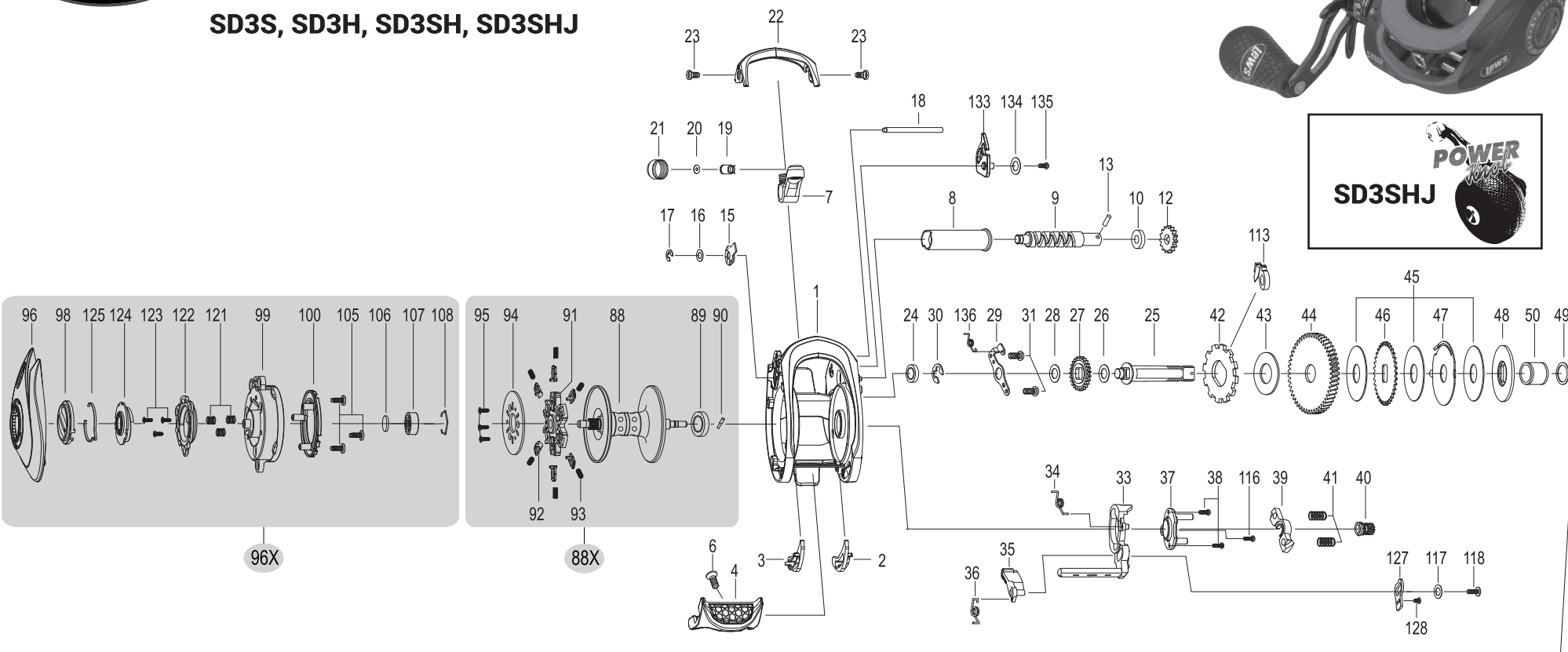
# Lew's SUPERDUTY® 300 SERIES SPEED SPOOL®

SD3S, SD3H, SD3SH, SD3SHJ

SD3H, SD3SH



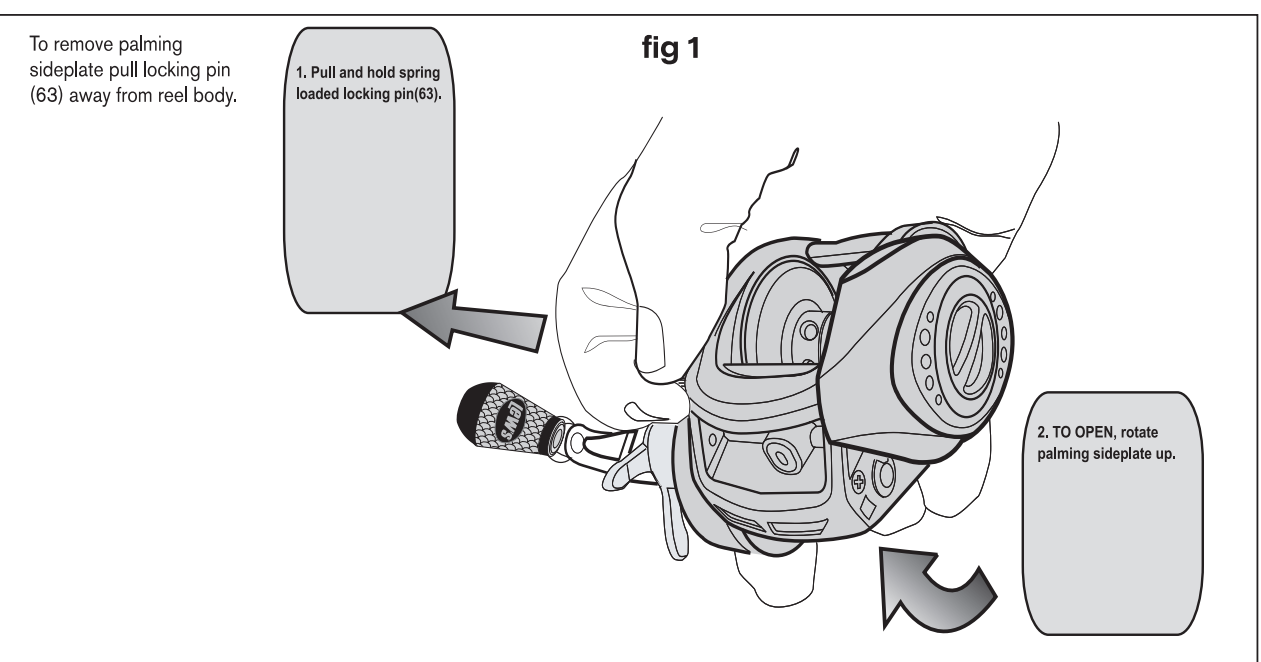
KEY #	PART NAME	KEY #	PART NAME	KEY #	PART NAME
1	FRAME	46	DRAG WASHER (D1)	88X	SPOOL ASSEMBLY
2	CLUTCH BAR PLATE-R	47	DRAG WASHER (A)	89	BALL BEARING
3	CLUTCH BAR PLATE-L	48	DRAG WASHER (D2)	90	PIN
4	CLUTCH BAR ASSEMBLY	49	SLEEVE WASHER (OPTIONAL)	91	BRAKE HOLDER
6	CLUTCH BAR SCREW	50	SLEEVE	92	BRAKE SHOE
7	LEVEL WIND ASSEMBLY	51	GEAR SIDE PLATE	93	BRAKE SHOE SPRING
8	PIPE	51X	GEAR SIDE PLATE ASSEMBLY	94	MAGNET PLATE
9	WORM SHAFT	53	ONE-WAY CLUTCH	95	MAGNET PLATE SCREW
10	BALL BEARING	54	O-RING	96	PALM SIDE PLATE
12	IDLER(S)	55	BALL BEARING	96X	PALM SIDE PLATE ASSEMBLY
13	WORM SHAFT PIN	56	BEARING RETAINER	98	CONTROL DIAL
15	WORM SHAFT BUSHING (B)	57	CAST CONTROL CAP	99	SPOOL COVER
16	WORM SHAFT WASHER (OPTIONAL)	57X	CAST CONTROL CAP ASSEMBLY	100	MAGNET HOLDER ASSEMBLY
17	E-RING	58	CLICKER	105	SPOOL COVER SCREW (3)
18	PILLAR	59	CLICK PLATE	106	SPOOL SPACER (A)
19	LEVEL WIND PIN	60	CLICK PLATE RETAINER	107	BALL BEARING
20	SPACER (OPTIONAL)	61	TENSION WASHER	108	BEARING RETAINER
21	LEVEL WIND NUT	62	SPOOL SPACER (B)	114	WASHER (OPTIONAL)
22	FRONT COVER	66	GEAR SIDE PLATE SCREW (A)	117	CLUTCH WASHER
23	FRONT COVER SCREW (A)	67	GEAR SIDE PLATE SCREW (B)	118	CLUTCH SCREW
24	BALL BEARING	69	LUBE PORT CAP	121	SLIDE CAM SPRING
25	CRANK SHAFT	70	LUBE PORT CAP SCREW	122	SLIDE CAM (H)
26	IDLER (L) WASHER (A)	71	DRAG SPRING WASHER	123	SLIDE CAM SCREW
27	IDLER (L)	72	CLICK HOLDER	124	SLIDE CAM (D)
28	IDLER (L) WASHER (B)	73	STAR DRAG	125	CLICK SPRING
29	BEARING PLATE	73X	STAR DRAG ASSEMBLY	127	LINK PLATE
30	E-RING	74	CLICKER	128	LINK PLATE SCREW
31	BEARING PLATE SCREW	75	CLICK PLATE	133	SPEED KEEPER
33	CLUTCH CAM	76	CLICK PLATE RETAINER	134	SPEED KEEPER WASHER (OPT)
34	CLUTCH SPRING	77	HANDLE WASHER	135	SPEED KEEPER SCREW
35	KICK LEVER	78	HANDLE	136	SPEED KEEPER SPRING
36	KICK LEVER SPRING	78X	HANDLE ASSEMBLY	141	HOOD
37	CAM PLATE	79	BALL BEARING	142	HOOD SCREW
38	CAM PLATE SCREW	80	HANDLE KNOB	143	FRONT COVER SCREW (B)
39	PINION YOKE	81	BALL BEARING	144	LOCK LEVER
40	PINION GEAR	82	HANDLE KNOB SCREW	145	CLICK PIN SPRING
41	PINION YOKE SPRING (2)	83	HANDLE KNOB CAP	146	CLICK PIN
42	RATCHET	85	HANDLE NUT	147	GUIDE PIN
43	RATCHET WASHER	86	HANDLE NUT RETAINER	148	WASHER (OPTIONAL)
44	DRIVE GEAR	87	SCREW		
45	DRAG WASHER (L-3)	88	SPOOL		



**MAINTENANCE AND CARE**

When applying lubricant to your Speed Spool reel, avoid using multi-purpose oil. Use lightweight oils or greases made for fishing reels. Apply oil to all bearings, the crankshaft and the worm gear. Apply grease to the bushings, pinion gears, drive gears, and crank gears.

After usage, your reel should be inspected for dirt or sand and cleaned if excessive build-up is present. If your reel has come in contact with saltwater it is important to flush all parts with water, dry and re-lubricate your reel. Through diligent cleaning and maintenance your Lew's reel will provide you with years of reliability and sound performance.





# SUPERDUTY® 300 SERIES SPEED SPOOL® LFS

SD3HL, SD3SHL



**7 Bearing System**

## Reel Specifications

Model	Weight (oz)	Gear Ratio	Line Capacity (yd./lbs.)	RPT* (in.)
SD3HL	9.2	6.5:1	190/14	31
SD3SHL	9.2	7.2:1	190/14	35
SD3SHLJ+	9.9	7.2:1	190/14	35

\*Recovery per turn  
†Power handle

### FEATURES:

- One-piece aluminum frame and handle sideplate
- Premium 7-bearing system with stainless steel double shielded ball bearings and Zero Reverse® bearing
- Externally adjustable Multi-Setting Brake system (MSB)
- Braid-ready, forged, double anodized, deep capacity spool
- High strength solid brass Speed Gears, cut on precision Hamai CNC gear hobbing machines
- Double anodized aluminum spool tension adjustment
- Rugged carbon fiber drag system provides up to 24lbs. of drag power
- Audible click, bowed, double anodized aluminum star drag
- Bowed, heavy duty 100mm aluminum reel handle with Lew's® Winn Dri Tac knobs, J models feature counter balanced handle with a single Winn Dri Tac knob
- Combat style grip thumb bar
- Saltwater compatible with 3 drain ports
- Line out drag alarm
- Bowed 95 mm aluminum handle with Winn Dri-Tac knobs

## Performance – Right out of the Box!

Your Speed Spool® reel is designed for performance and functionality. From the way it conforms to your hand, to the way it reacts crisply and effortlessly to your command, you'll know the minute you grab onto your Speed Spool® that you've got a quality reel.

Your Speed Spool reel exploits several new developments which will allow you to set yourself apart from the competition.



**Speed Gears** Lew's Speed Gears are cut on precision Hamai CNC gear hobbing machines resulting in an efficient drive train with less gear feel.

**One-piece Aluminum Frame** Your Speed Spool® reel utilizes a one-piece all aluminum frame so that you'll never have to worry about frame torque or twisting.

**Machine Forged Double Anodized Aluminum Spool** The machine forged double anodized aluminum spool of your Speed Spool reel is engineered for deep capacity and double anodized for superior oxidation and abrasion resistance.



**ZRXTRA System** The handle on your Speed Spool® reel will only rotate forward for rock solid hook sets. When you release the handle, it will hold its position because of the Zero-Reverse bearing backed up by a strong mechanical system that will hold up to the rigors of hard hook sets and heavy drag settings.



**Multi-Setting Braking System (MSB)** In order to combat backlash your Speed Spool® reel features both an externally-adjustable, full-release magnetic braking system as well as an internally adjustable centrifugal brake system. The magnetic brakes give consistent braking throughout the entire cast and are adjusted by the palming sideplate dial. The centrifugal brakes provide initial braking at the beginning of the cast to reduce backlash and can be turned off to reduce braking by removing the palming sideplate and pushing the white pin(s) towards the center of the spool until they click. To turn them back on push the white pin(s) away from the center of the spool until they click.

**Cast Control System** A second feature exists to prevent backlash, the Cast Control System. An adjustment knob is found next to the star drag. The function saddles the spool shaft with steady pressure in order to stabilize spool speed.

To calibrate the system, reel your lure in until it rests on the tip of the rod, then tighten the knob until taut. Depress the thumb bar, and holding the rod horizontally loosen the knob slowly until the lure begins to descend. The spool should continue to spin after the lure contacts the ground, but should not complete more than one full rotation. If the spool does not continue to spin, the knob is too tight.

If the spool completes more than one rotation, the knob is too loose. Repeat until you have achieved the desired results.



**Bowed 95 mm (100mm SD3SHJ Model) Aluminum Handle** Our bowed aluminum handle will give you all the cranking power you need. The Winn Dri-Tac knobs are an added bonus known for a comfortable fit and ease for all day fishing.

Speed Spool SuperDuty Baitcast reels are designed to be **Super Strong. Driven by innovation – Fueled with Passion Feel the Difference!**

## ATTENTION BRAIDED LINE USERS!

If your Lew's® Baitcast reel has pre-drilled holes in the spool, you may tie your braid directly to the spool, by passing the braid thru the provided holes and tying a uni-knot.

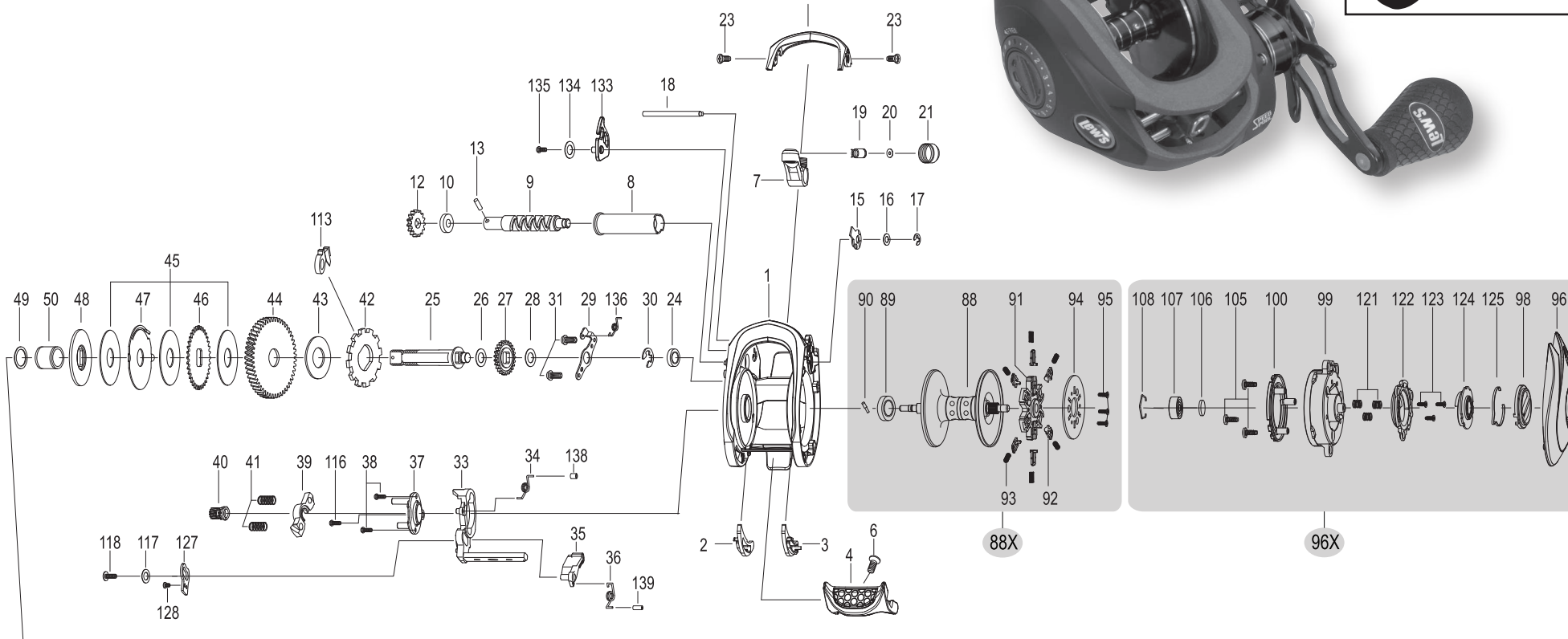
If your Lew's® baitcast reel does not have pre-drilled holes in the spool, you will need to first tie on and spool at least 20 revolutions of monofilament line, and then tie your braided line to the monofilament line, with either a back-to-back uni-knot or an Albright knot.

Continue to spool your reel as normal, keeping strong tension on the line to ensure the line is firmly wound onto the spool to keep from "digging in" to underlying line layers when pressure is put on the line from fighting fish.

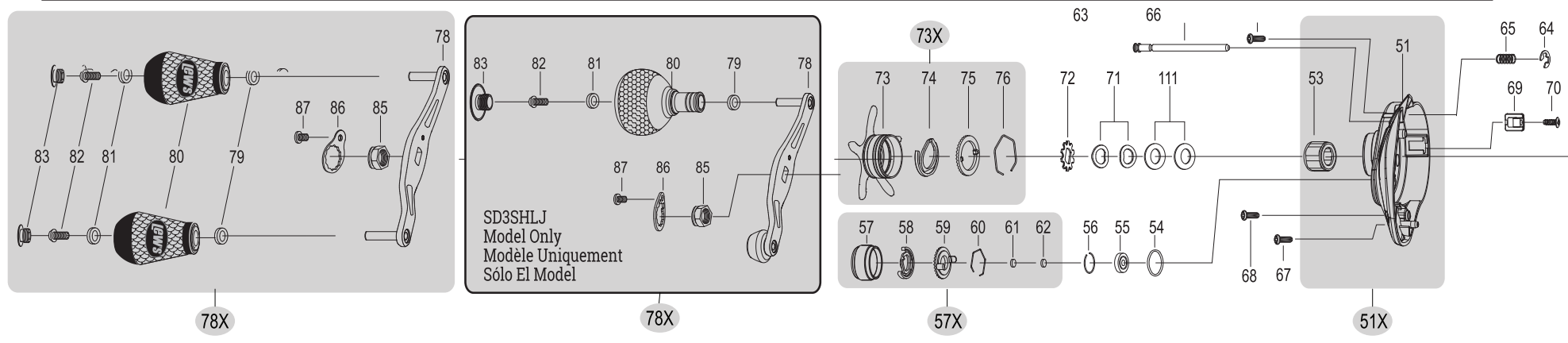
**FAILURE TO PROPERLY SPOOL BRAIDED LINE ONTO YOUR REELS SPOOL WILL RESULT IN LINE SLIPPAGE, AND THE IMPRESSION YOUR DRAG IS NOT WORKING PROPERLY.**

**Lew's** **SUPERDUTY® 300 SERIES**  
**SPEED SPOOL® LFS**  
**SD3HL, SD3SHL, SD3SHLJ**

**SD3HL,  
SD3SHL**

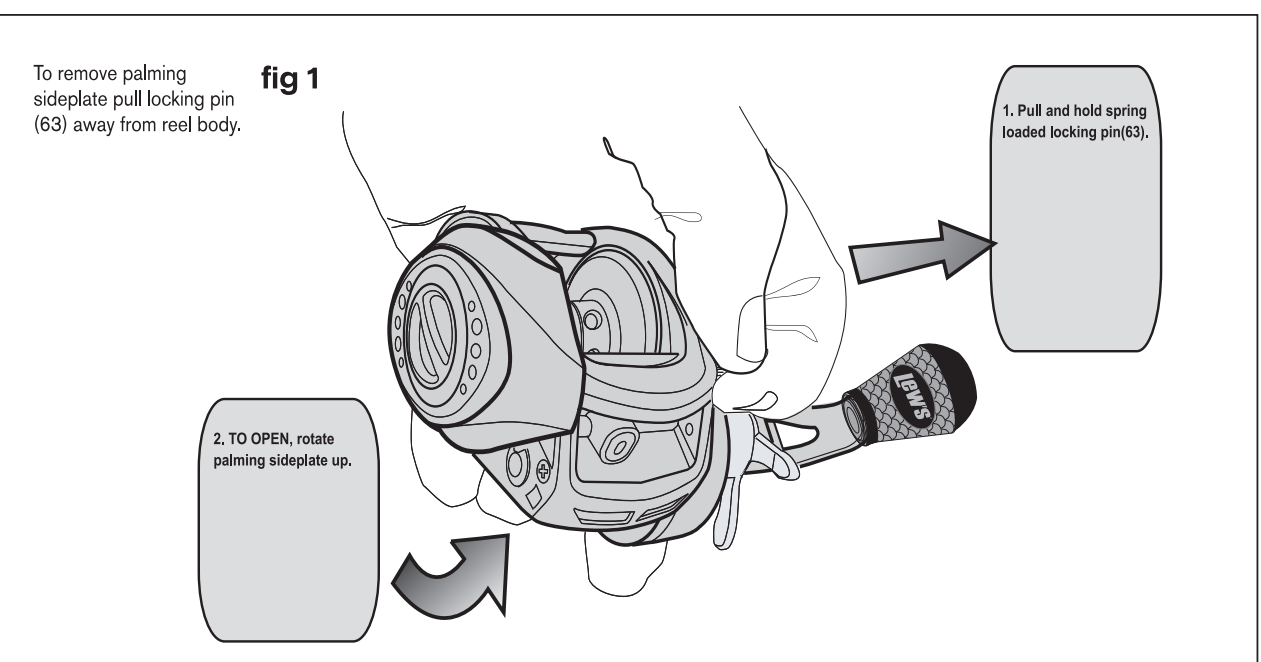


KEY #	PART NAME	KEY #	PART NAME	KEY #	PART NAME
1	FRAME	46	DRAG WASHER (D1)	88X	SPOOL ASSEMBLY
2	CLUTCH BAR PLATE-R	47	DRAG WASHER (A)	89	BALL BEARING
3	CLUTCH BAR PLATE-L	48	DRAG WASHER (D2)	90	PIN
4	CLUTCH BAR ASSEMBLY	49	SLEEVE WASHER (OPTIONAL)	91	BRAKE HOLDER
6	CLUTCH BAR SCREW	50	SLEEVE	92	BRAKE SHOE
7	LEVEL WIND ASSEMBLY	51	GEAR SIDE PLATE	93	BRAKE SHOE SPRING
8	PIPE	51X	GEAR SIDE PLATE ASSEMBLY	94	MAGNET PLATE
9	WORM SHAFT	53	ONE-WAY CLUTCH	95	MAGNET PLATE SCREW
10	BALL BEARING	54	O-RING	96	PALM SIDE PLATE
12	IDLER(S)	55	BALL BEARING	96X	PALM SIDE PLATE ASSEMBLY
13	WORM SHAFT PIN	56	BEARING RETAINER	98	CONTROL DIAL
15	WORM SHAFT BUSHING (B)	57	CAST CONTROL CAP	99	SPOOL COVER
16	WORM SHAFT WASHER (OPTIONAL)	57X	CAST CONTROL CAP ASSEMBLY	100	MAGNET HOLDER ASSEMBLY
17	E-RING	58	CLICKER	105	SPOOL COVER SCREW (3)
18	PILLAR	59	CLICK PLATE	106	SPOOL SPACER (A)
19	LEVEL WIND PIN	60	CLICK PLATE RETAINER	107	BALL BEARING
20	SPACER (OPTIONAL)	61	TENSION WASHER	108	BEARING RETAINER
21	LEVEL WIND NUT	62	SPOOL SPACER (B)	114	WASHER (OPTIONAL)
22	FRONT COVER	66	GEAR SIDE PLATE SCREW (A)	117	CLUTCH WASHER
23	FRONT COVER SCREW (A)	67	GEAR SIDE PLATE SCREW (B)	118	CLUTCH SCREW
24	BALL BEARING	69	LUBE PORT CAP	121	SLIDE CAM SPRING
25	CRANK SHAFT	70	LUBE PORT CAP SCREW	122	SLIDE CAM (H)
26	IDLER (L) WASHER (A)	71	DRAG SPRING WASHER	123	SLIDE CAM SCREW
27	IDLER (L)	72	CLICK HOLDER	124	SLIDE CAM (D)
28	IDLER (L) WASHER (B)	73	STAR DRAG	125	CLICK SPRING
29	BEARING PLATE	73X	STAR DRAG ASSEMBLY	127	LINK PLATE
30	E-RING	74	CLICKER	128	LINK PLATE SCREW
31	BEARING PLATE SCREW	75	CLICK PLATE	133	SPEED KEEPER
33	CLUTCH CAM	76	CLICK PLATE RETAINER	134	SPEED KEEPER WASHER (OPT)
34	CLUTCH SPRING	77	HANDLE WASHER	135	SPEED KEEPER SCREW
35	KICK LEVER	78	HANDLE	136	SPEED KEEPER SPRING
36	KICK LEVER SPRING	78X	HANDLE ASSEMBLY	141	HOOD
37	CAM PLATE	79	BALL BEARING	142	HOOD SCREW
38	CAM PLATE SCREW	80	HANDLE KNOB	143	FRONT COVER SCREW (B)
39	PINION YOKE	81	BALL BEARING	144	LOCK LEVER
40	PINION GEAR	82	HANDLE KNOB SCREW	145	CLICK PIN SPRING
41	PINION YOKE SPRING (2)	83	HANDLE KNOB CAP	146	CLICK PIN
42	RATCHET	85	HANDLE NUT	147	GUIDE PIN
43	RATCHET WASHER	86	HANDLE NUT RETAINER	148	WASHER (OPTIONAL)
44	DRIVE GEAR	87	SCREW		
45	DRAG WASHER (L-3)	88	SPOOL		



SD3SHLJ  
 Model Only  
 Modèle Uniquement  
 Sólo El Model

**MAINTENANCE AND CARE**  
 When applying lubricant to your Speed Spool reel, avoid using multi-purpose oil. Use lightweight oils or greases made for fishing reels. Apply oil to all bearings, the crankshaft and the worm gear. Apply grease to the bushings, pinion gears, drive gears, and crank gears.  
 After usage, your reel should be inspected for dirt or sand and cleaned if excessive build-up is present. If your reel has come in contact with saltwater it is important to flush all parts with water, dry and re-lubricate your reel. Through diligent cleaning and maintenance your Lew's reel will provide you with years of reliability and sound performance.



Learn more about fishing gear and accessories we have.