

LEW'S® SPEED SPOOL® LFS

SS1A, SS1HA, SS1SHA



Reel Specifications

Model	Weight (oz.)	Line Capacity (yds./lbs.)	Gear Ratio	RPT* (in.)
SS1SA	7.1	140/12	5.6:1	23"
SS1HA	7.1	120/12	6.8:1	28"
SS1SHA	7.1	120/12	7.5:1	31"

*Rotation per turn

FEATURES:

- One-piece aluminum frame
- Premium 10-bearing system with stainless steel double shielded ball bearings and Zero Reverse® one-way clutch bearing
- P2 bearing supported pinion gear provides precise alignment and solid stability, resulting in smoother operation and extended gear life
- Externally adjustable Magnetic Control System (MCS)
- Lightweight anodized aluminum 34mm spool
- High strength solid brass Speed Gears, cut on precision Hamai CNC gear hobbing machines
- Durable Rulon drag system provides up to 15lbs. drag power
- Audible click, bowed, graphite drag star
- Zirconia line guide • External lube port
- 95mm bowed aluminum handle with Lew's® custom SoftTouch contoured paddles

Performance — Right out of the Box!

Your Speed Spool® LFS reel is designed to be Lighter, Faster and Stronger. From the way it conforms to your hand, to the way it reacts crisply and effortlessly to your command, you'll know the minute you grab onto your Speed Spool® LFS that you've got a quality reel. Your Speed Spool LFS reel exploits several new developments which will allow you to set yourself apart from the competition.

One-piece Aluminum Frame Your Speed Spool® reel utilizes a one-piece all aluminum frame so that you'll never have to worry about frame torque or twisting.

Lightweight Anodized Aluminum Spool The spool of your Speed Spool reel has been engineered to maximize casting distance, anodized to withstand oxidation and abrasion.

Speed Gears Lew's Speed Gears are cut on precision Hamai CNC gear hobbing machines resulting in an efficient drive train with less gear feel.

P2 Bearing The P2 bearing supported pinion maintains precise alignment with the drive gear for improved gear lie. The result is smooth cranking power even when under load. An added benefit is reduced friction with the spool shaft resulting in enhanced casting performance.

Zero Reverse Bearing The handle on your Speed Spool reel will only rotate forward for rock solid hook setting. When you release the handle, it will hold its position because of the Zero Reverse bearing, never losing an inch on your catch; an invaluable property to have when you're pulling it in.

Full-Release Magnetic Control System (MCS)

In order to combat backlash your Speed Spool reel is furnished with an externally adjustable, full-release magnetic braking system. As the spool accelerates it experiences magnetic resistance, which can be controlled with a dial on the palming sideplate. A full-release magnetic brake has the ability to be backed for enough away from the spool to completely negate any effect on the acceleration of the spool.



Cast Control System A second feature exists to prevent backlash, the Cast Control System. An adjustment knob is found next to the star drag. The function saddles the spool shaft with steady pressure in order to stabilize spool speed.

To calibrate the system reel your lure in until it rests on the tip of the rod, then tighten the knob until taut. Depress the thumb bar, and holding the rod horizontally loosen the knob slowly until the lure begins to descend. The spool should continue to spin after the lure contacts the ground, but should not complete more than one full rotation. If the spool does not continue to spin, the knob is too tight. If the spool completes more than one rotation, the knob is too loose. Repeat until you have achieved the desired results.

Bowed 95mm Aluminum Handle The 95mm bowed aluminum handle will give you all the cranking power you need. The Lew's custom SoftTouch handle knobs are an added bonus and will provide comfortable fit for all day fishing.

Driven by innovation — Fueled with Passion Feel the Difference!

ATTENTION BRAIDED LINE USERS!

If your Lew's Baitcast reel has pre-drilled holes in the spool, you may tie your braid directly to the spool, by passing the braid thru the provided holes and tying a uni-knot.

If your Lew's baitcast reel does not have pre-drilled holes in the spool, you will need to first tie on and spool at least 20 revolutions of monofilament line, and then tie your braided line to the monofilament line, with either a back-to-back uni-knot or an Albright knot.

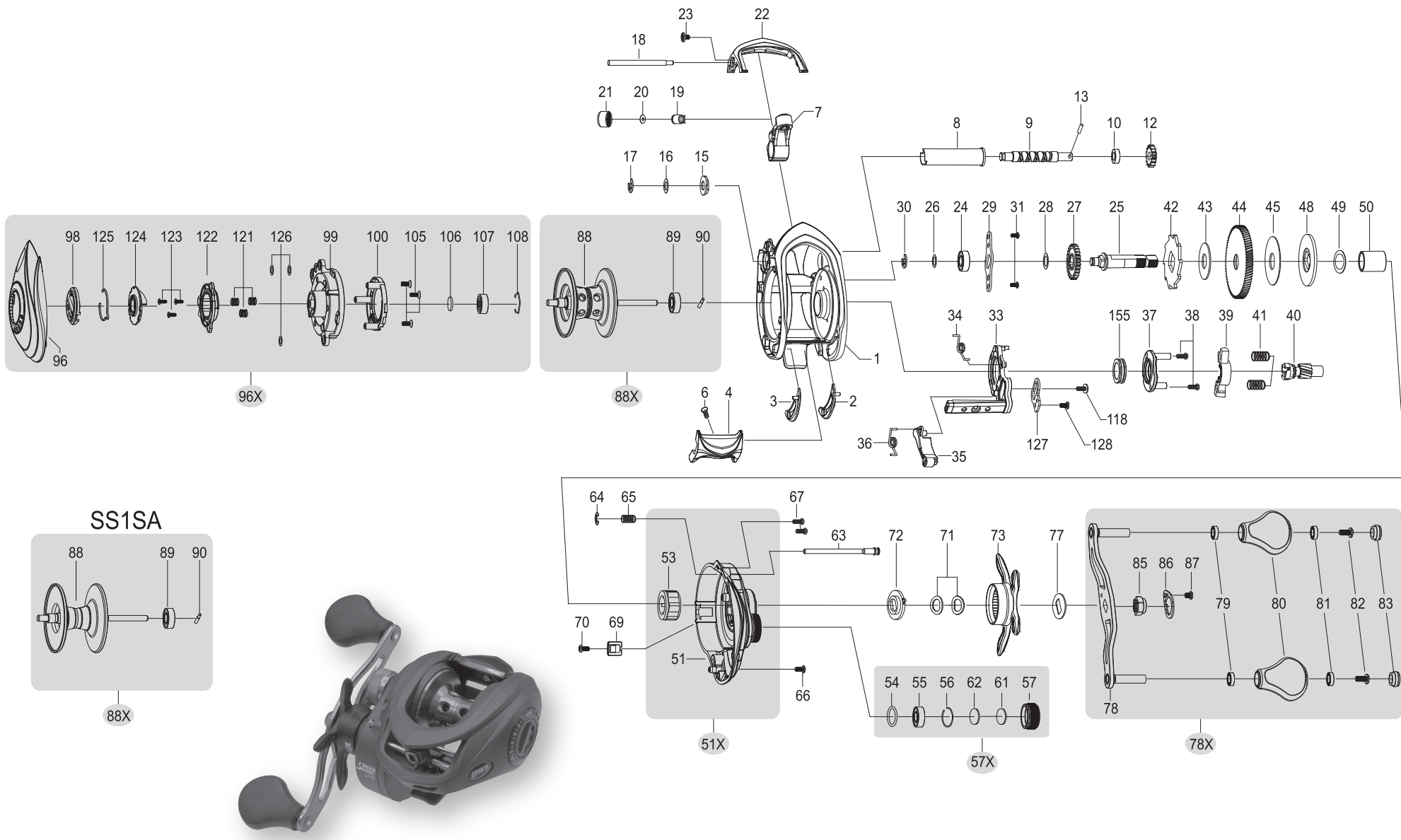
Continue to spool your reel as normal, keeping strong tension on the line to ensure the line is firmly wound onto the spool to keep from "digging in" to underlying line layers when pressure is put on the line from fighting fish.

FAILURE TO PROPERLY SPOOL BRAIDED LINE ONTO YOUR REELS SPOOL WILL RESULT IN LINE SLIPPAGE, AND THE IMPRESSION YOUR DRAG IS NOT WORKING PROPERLY.



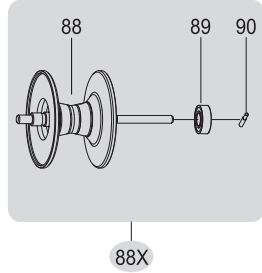
SPEED SPOOL® LFS

SS1SA, SS1HA, SS1SHA



KEY #	PART NAME	KEY #	PART NAME	KEY #	PART NAME
1	FRAME	39	PINION YOKE	80	HANDLE KNOB-2
2	CLUTCH BAR PLATE-R	40	PINION GEAR	81	BALL BEARING-2
3	CLUTCH BAR PLATE-L	41	PINION YOKE SPRING (2)	82	HANDLE KNOB SCREW-2
4	CLUTCH BAR	42	RATCHET	83	HANDLE KNOB CAP-2
6	CLUTCH BAR SCREW	43	RATCHET WASHER	85	HANDLE NUT
7	LEVELWIND ASSEMBLY	44	DRIVE GEAR	86	HANDLE NUT RETAINER
8	PIPE	45	DRAG WASHER-L	87	HANDLE NUT RETAINER SCREW
9	WORM SHAFT	48	DRAG WASHER-D	88	SPOOL
10	BALL BEARING	49	SLEEVE WASHER (OPT)	88X	SPOOL ASSEMBLY
12	IDLER(S)	50	SLEEVE	89	BALL BEARING
13	WORM SHAFT PIN	51	GEAR SIDEPLATE	90	PIN
15	WORM SHAFT BUSHING (B)	51X	GEAR SIDEPLATE ASSEMBLY	96	PALM SIDEPLATE
16	WORM SHAFT WASHER (OPT)	53	ONE-WAY CLUTCH	96X	PALM SIDEPLATE ASSEMBLY
17	E-RING	54	O-RING	98	CONTROL DIAL
18	PILLAR	55	BALL BEARING	99	SPOOL COVER
19	LEVELWIND PIN	56	BEARING RETAINER	105	SPOOL COVER SCREW-3
20	SPACER (OPTIONAL)	57	CAST CONTROL CAP	106	SPOOL SPACER-A
21	LEVELWIND NUT	57X	CAST CONTROL CAP ASSEMBLY	107	BALL BEARING
22	FRONT COVER	61	TENSION WASHER	108	BEARING RETAINER
23	FRONT COVER SCREW-2	62	SPOOL SPACER-B	110	PILLAR-A
24	BALL BEARING	63	LOCKING PIN	111	DRAG SPRING WASHER
25	CRANKSHAFT	64	E-RING	114	WASHER (OPT)
26	IDLER-L WASHER-A	65	LOCKING PIN SPRING	120	BRAKE PLATE HOLDER ASSEMBLY
27	IDLER-L	66	GEAR SIDEPLATE SCREW-A	121	SLIDE CAM SPRING-3
28	IDLER-L WASH-B	67	GEAR SIDEPLATE SCREW-B	122	SLIDE CAM-H
29	BEARING PLATE	69	LUBE PORT CAP	123	SLIDE CAM SCREW
30	E-RING	70	LUBE PORT CAP SCREW	124	SLIDE CAM-D
31	BEARING PLATE SCREW-2	71	DRAG SPRING WASHER-2	125	CLICK SPRING
33	CLUTCH CAM	72	CLICK PLATE ASSEMBLY	126	SPOOL COVER SPACER (OPT)
34	CLUTCH SPRING	73	STAR DRAG	155	BUSHING
35	KICK LEVER	77	HANDLE WASHER		
36	KICK LEVER SPRING	78	HANDLE		
37	CAM PLATE	78X	HANDLE ASSEMBLY		
38	CLUTCH CAM SCREW-2	79	BALL BEARING-2		

SS1SA

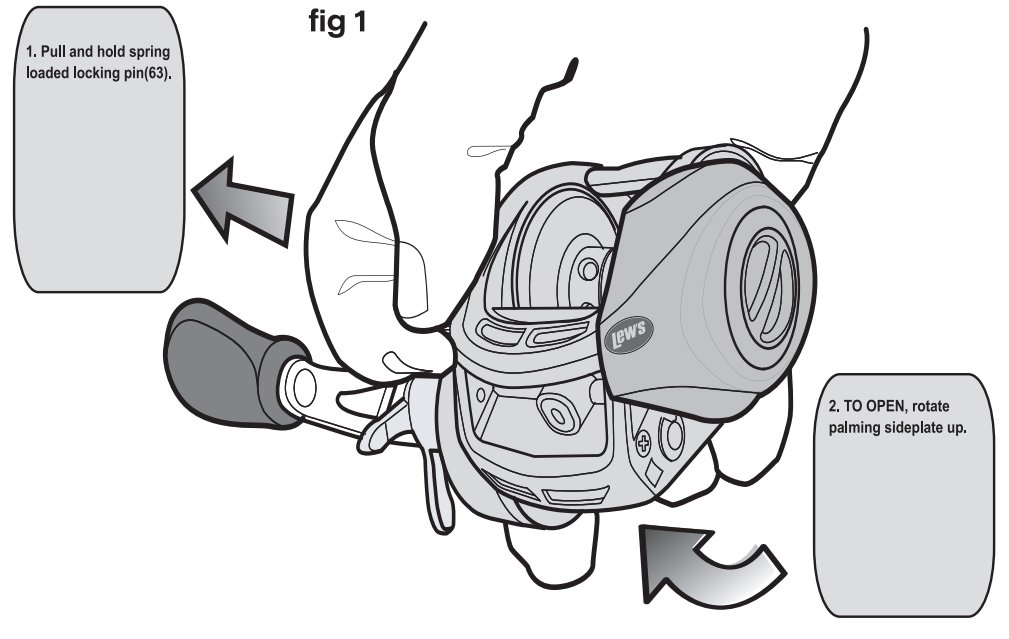


MAINTENANCE AND CARE

When applying lubricant to your Speed Spool reel, avoid using multi-purpose oil. Use lightweight oils or greases made for fishing reels. Apply oil to all bearings, the crankshaft and the worm gear. Apply grease to the bushings, pinion gears, drive gears, and crank gears.

After usage, your reel should be inspected for dirt or sand and cleaned if excessive build-up is present. If you reel has come in contact with saltwater it is important flush all parts with water, dry and re-lubricate your reel. Through diligent cleaning and maintenance your Lew's reel will provide you with years of reliability and sound performance.

To remove palming sideplate pull locking pin (63) away from reel body.





SPEED SPOOL® LFS

Driven by innovation – Fueled with Passion Feel the Difference!

SS1HLA, SS1SHLA



Reel Specifications

Model	Weight (oz.)	Line Capacity (yds./lbs.)	Gear Ratio	RPT* (in.)
SS1HLA	7.1	120/12	6.8:1	28"
SS1SHLA	7.1	120/12	7.5:1	31"

*Rotation per turn

FEATURES:

- One-piece aluminum frame
- Premium 10-bearing system with stainless steel double shielded ball bearings and Zero Reverse® one-way clutch bearing
- P2 bearing supported pinion gear provides precise alignment and solid stability, resulting in smoother operation and extended gear life
- Externally adjustable Magnetic Control System(MCS)
- Lightweight anodized aluminum 34mm spool
- High strength solid brass Speed Gears, cut on precision Hamai CNC gear hobbing machines
- Durable Rulon drag system provides up to 15lbs. drag power
- Audible click, bowed, graphite drag star
- Zirconia line guide • External lube port
- 95mm bowed aluminum handle with Lew's® custom SoftTouch contoured paddles

Performance – Right out of the Box!

Your Speed Spool® LFS reel is designed to be Lighter, Faster and Stronger. From the way it conforms to your hand, to the way it reacts crisply and effortlessly to your command, you'll know the minute you grab onto your Speed Spool® LFS that you've got a quality reel. Your Speed Spool LFS reel exploits several new developments which will allow you to set yourself apart from the competition.

One-piece Aluminum Frame Your Speed Spool® reel utilizes a one-piece all aluminum frame so that you'll never have to worry about frame torque or twisting.

Lightweight Anodized Aluminum Spool The spool of your Speed Spool reel has been engineered to maximize casting distance, anodized to withstand oxidation and abrasion.



Speed Gears Lew's Speed Gears are cut on precision Hamai CNC gear hobbing machines resulting in an efficient drive train with less gear feel.



P2 Bearing The P2 bearing supported pinion maintains precise alignment with the drive gear for improved gear lie. The result is smooth cranking power even when under load. An added benefit is reduced friction with the spool shaft resulting in enhanced casting performance.



Zero Reverse Bearing The handle on your Speed Spool reel will only rotate forward for rock solid hook setting. When you release the handle, it will hold its position because of the Zero Reverse bearing, never losing an inch on your catch; an invaluable property to have when you're pulling it in.

Full-Release Magnetic Control System (MCS)

In order to combat backlash your Speed Spool reel is furnished with an externally adjustable, full-release magnetic braking system. As the spool accelerates it experiences magnetic resistance, which can be controlled with a dial on the palming sideplate. A full-release magnetic brake has the ability to be backed for enough away from the spool to completely negate any effect on the acceleration of the spool.

Magnetic Control System **MCS**



Cast Control System A second feature exists to prevent backlash, the Cast Control System. An adjustment knob is found next to the star drag. The function saddles the spool shaft with steady pressure in order to stabilize spool speed.

To calibrate the system reel your lure in until it rests on the tip of the rod, then tighten the knob until taut. Depress the thumb bar, and holding the rod horizontally loosen the knob slowly until the lure begins to descend. The spool should continue to spin after the lure contacts the ground, but should not complete more than one full rotation. If the spool does not continue to spin, the knob is too tight. If the spool completes more than one rotation, the knob is too loose. Repeat until you have achieved the desired results.

Bowed 95mm Aluminum Handle The 95mm bowed aluminum handle will give you all the cranking power you need. The Lew's custom SoftTouch handle knobs are an added bonus and will provide comfortable fit for all day fishing.

ATTENTION BRAIDED LINE USERS!

If your Lew's Baitcast reel has pre-drilled holes in the spool, you may tie your braid directly to the spool, by passing the braid thru the provided holes and tying a uni-knot.

If your Lew's baitcast reel does not have pre-drilled holes in the spool, you will need to first tie on and spool at least 20 revolutions of monofilament line, and then tie your braided line to the monofilament line, with either a back-to-back uni-knot or an Albright knot.

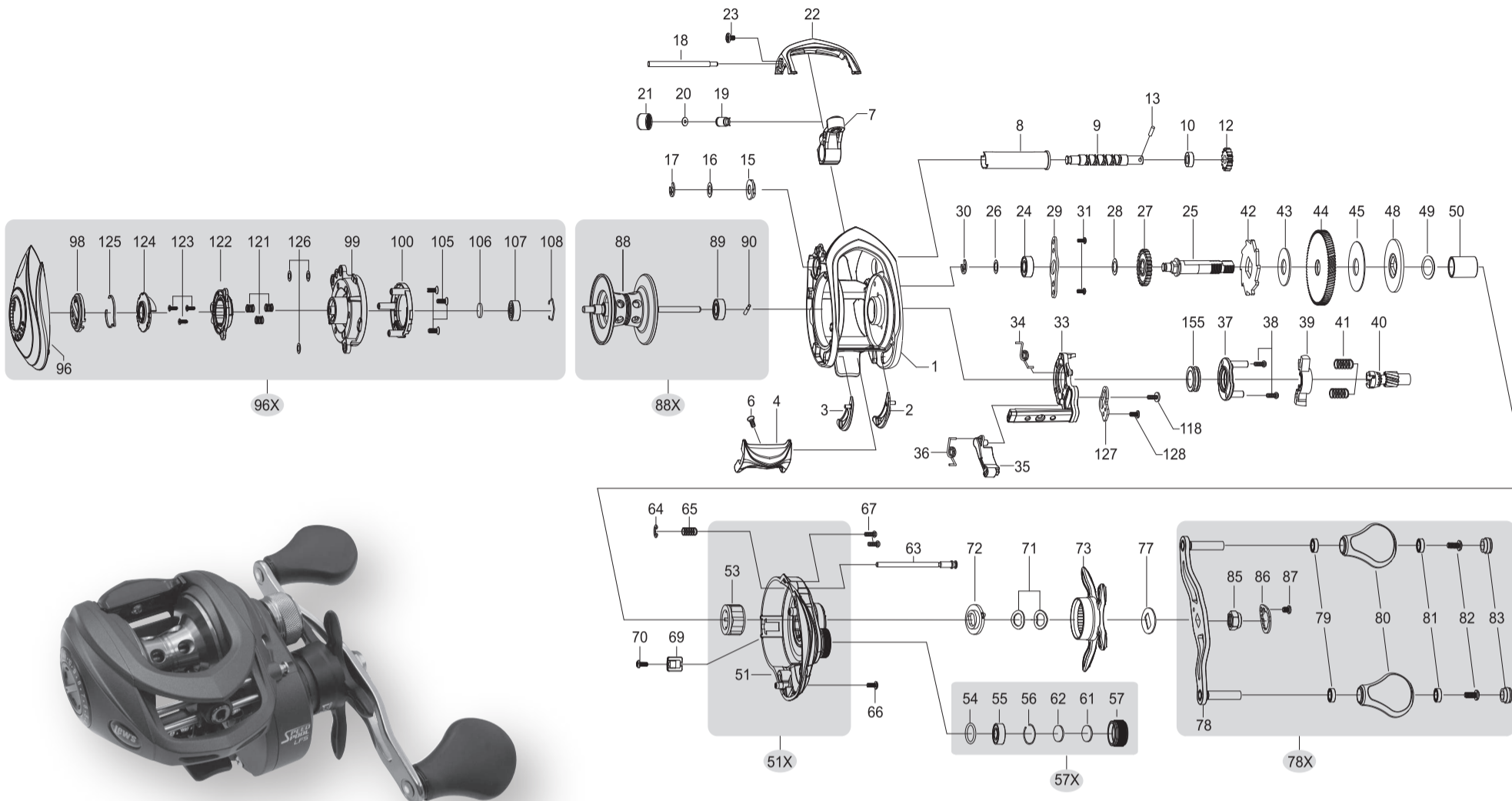
Continue to spool your reel as normal, keeping strong tension on the line to ensure the line is firmly wound onto the spool to keep from "digging in" to underlying line layers when pressure is put on the line from fighting fish.

FAILURE TO PROPERLY SPOOL BRAIDED LINE ONTO YOUR REELS SPOOL WILL RESULT IN LINE SLIPPAGE, AND THE IMPRESSION YOUR DRAG IS NOT WORKING PROPERLY.



SPEED SPOOL® LFS

SS1HLA, SS1SHLA



KEY #	PART NAME	KEY #	PART NAME	KEY #	PART NAME
1	FRAME	39	PINION YOKE	80	HANDLE KNOB-2
2	CLUTCH BAR PLATE-R	40	PINION GEAR	81	BALL BEARING-2
3	CLUTCH BAR PLATE-L	41	PINION YOKE SPRING (2)	82	HANDLE KNOB SCREW-2
4	CLUTCH BAR	42	RATCHET	83	HANDLE KNOB CAP-2
6	CLUTCH BAR SCREW	43	RATCHET WASHER	85	HANDLE NUT
7	LEVELWIND ASSEMBLY	44	DRIVE GEAR	86	HANDLE NUT RETAINER
8	PIPE	45	DRAG WASHER-L	87	HANDLE NUT RETAINER SCREW
9	WORM SHAFT	48	DRAG WASHER-D	88	SPOOL
10	BALL BEARING	49	SLEEVE WASHER (OPT)	88X	SPOOL ASSEMBLY
12	IDLER(S)	50	SLEEVE	89	BALL BEARING
13	WORM SHAFT PIN	51	GEAR SIDEPLATE	90	PIN
15	WORM SHAFT BUSHING (B)	51X	GEAR SIDEPLATE ASSEMBLY	96	PALM SIDEPLATE
16	WORM SHAFT WASHER (OPT)	53	ONE-WAY CLUTCH	96X	PALM SIDEPLATE ASSEMBLY
17	E-RING	54	O-RING	98	CONTROL DIAL
18	PILLAR	55	BALL BEARING	99	SPOOL COVER
19	LEVELWIND PIN	56	BEARING RETAINER	105	SPOOL COVER SCREW-3
20	SPACER (OPTIONAL)	57	CAST CONTROL CAP	106	SPOOL SPACER-A
21	LEVELWIND NUT	57X	CAST CONTROL CAP ASSEMBLY	107	BALL BEARING
22	FRONT COVER	61	TENSION WASHER	108	BEARING RETAINER
23	FRONT COVER SCREW-2	62	SPOOL SPACER-B	110	PILLAR-A
24	BALL BEARING	63	LOCKING PIN	111	DRAG SPRING WASHER
25	CRANKSHAFT	64	E-RING	114	WASHER (OPT)
26	IDLER-L WASHER-A	65	LOCKING PIN SPRING	120	BRAKE PLATE HOLDER ASSEMBLY
27	IDLER-L	66	GEAR SIDEPLATE SCREW-A	121	SLIDE CAM SPRING-3
28	IDLER-L WASH-B	67	GEAR SIDEPLATE SCREW-B	122	SLIDE CAM-H
29	BEARING PLATE	69	LUBE PORT CAP	123	SLIDE CAM SCREW
30	E-RING	70	LUBE PORT CAP SCREW	124	SLIDE CAM-D
31	BEARING PLATE SCREW-2	71	DRAG SPRING WASHER-2	125	CLICK SPRING
33	CLUTCH CAM	72	CLICK PLATE ASSEMBLY	126	SPOOL COVER SPACER (OPT)
34	CLUTCH SPRING	73	STAR DRAG	155	BUSHING
35	KICK LEVER	77	HANDLE WASHER		
36	KICK LEVER SPRING	78	HANDLE		
37	CAM PLATE	78X	HANDLE ASSEMBLY		
38	CLUTCH CAM SCREW-2	79	BALL BEARING-2		

MAINTENANCE AND CARE

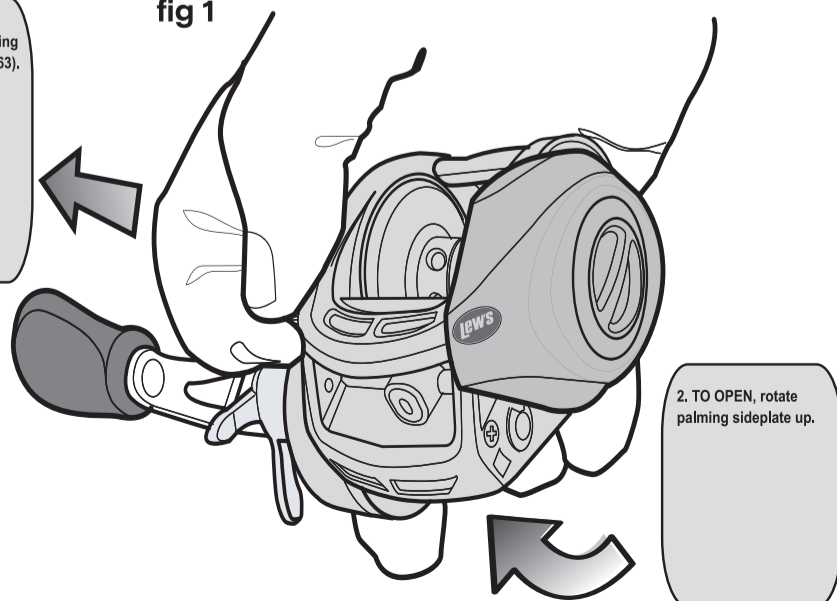
When applying lubricant to your Speed Spool reel, avoid using multi-purpose oil. Use lightweight oils or greases made for fishing reels. Apply oil to all bearings, the crankshaft and the worm gear. Apply grease to the bushings, pinion gears, drive gears, and crank gears.

After usage, your reel should be inspected for dirt or sand and cleaned if excessive build-up is present. If your reel has come in contact with saltwater it is important to flush all parts with water, dry and re-lubricate your reel. Through diligent cleaning and maintenance your Lew's reel will provide you with years of reliability and sound performance.

To remove palming sideplate pull locking pin (63) away from reel body.

1. Pull and hold spring loaded locking pin(63).

fig 1



2. TO OPEN, rotate palming sideplate up.