



# SPEED SPOOL® LFS

TP1HA, TP1SHA, TP1XHA



## Reel Specifications

Model	Weight (oz.)	Line Capacity (yds./lbs.)	Gear Ratio	RPT* (in.)
TP1HA	6.4	120/12	6.8:1	28"
TP1SHA	6.4	120/12	7.5:1	31"
TP1XHA	6.4	120/12	8.3:1	35"

\*Rotation per turn

### FEATURES:

- One-piece aluminum frame
- Premium 11-bearing system with stainless steel double shielded ball bearings and Zero Reverse® one-way clutch bearing
- P2 bearing supported pinion gear provides precise alignment and solid stability, resulting in a smoother operation and extended gear life
- SpeedCast® QuiteCast externally Adjustable Centrifugal Brake (ACB) system
- High strength solid brass Speed Gears, cut on precision Hamai CNC gear hobbing machines
- Durable carbon fiber drag, provides up to 20lbs. of drag power
- Double anodized aluminum spool tension adjustment knob with Lew's patented Speed dial line indicator
- Audible click, bowed, double anodized aluminum drag star
- Lew's patented Speed Keeper hook keeper
- Zirconia line guide
- External lube port

## Driven by innovation – Fueled with Passion Feel the Difference!

### ATTENTION BRAIDED LINE USERS!

If your Lew's Baitcast reel has pre-drilled holes in the spool, you may tie your braid directly to the spool, by passing the braid thru the provided holes and tying a uni-knot.

If your Lew's baitcast reel does not have pre-drilled holes in the spool, you will need to first tie on and spool at least 20 revolutions of monofilament line, and then tie your braided line to the monofilament line, with either a back-to-back uni-knot or an Albright knot.

Continue to spool your reel as normal, keeping strong tension on the line to ensure the line is firmly wound onto the spool to keep from "digging in" to underlying line layers when pressure is put on the line from fighting fish.

**FAILURE TO PROPERLY SPOOL BRAIDED LINE ONTO YOUR REELS SPOOL WILL RESULT IN LINE SLIPPAGE, AND THE IMPRESSION YOUR DRAG IS NOT WORKING PROPERLY.**

## Performance – Right out of the Box!

**Speed Spool LFS Baitcast reels are designed to be Lighter, Faster, and Stronger.**

Your Speed Spool® LFS reel is designed to be Lighter, Faster and Stronger. From the way it conforms to your hand, to the way it reacts crisply and effortlessly to your command, you'll know the minute you grab onto your Speed Spool® LFS that you've got a quality reel. Your Speed Spool LFS reel exploits several new developments which will allow you to set yourself apart from the competition.

**One-piece Aluminum Frame** Your Speed Spool® reel utilizes a one-piece all aluminum frame so that you'll never have to worry about frame torque or twisting.

**Machine Forged Double Anodized Aluminum Spool** The machine forged double anodized aluminum spool of your Speed Spool reel is engineered for deep capacity and double anodized for superior oxidation and abrasion resistance.



**Speed Gears** Lew's Speed Gears are cut on precision Hamai CNC gear hobbing machines resulting in an efficient drive train with less gear feel.

**P2 Bearing** The P2 bearing supported pinion maintains precise alignment with the drive gear for improved gear lie. The result is smooth crank power even when under load. An added benefit is reduced friction with the spool shaft resulting in enhanced casting performance.



**Zero Reverse Bearing** The handle on your Speed Spool reel will only rotate forward for rock solid hook setting. When you release the handle, it will hold its position because of the Zero Reverse® bearing, never losing an inch on your catch; an invaluable property to have when you're pulling it in.



**QuietCast 6-Pin Externally Adjustable Centrifugal Brake System (ACB)**

The QuietCast® Adjustable Centrifugal Brake System delivers an extreme range of braking power without the noise normally associated with centrifugal brake systems. Adjustable from free spool to maximum by simply clicking its external dial to choose among 27 variable settings. The QuietCast system puts you in control of your casts, perfectly aligning brake power to conditions. With this system you will have precise casting control over light lures, while maximizing casting distance with all lures.



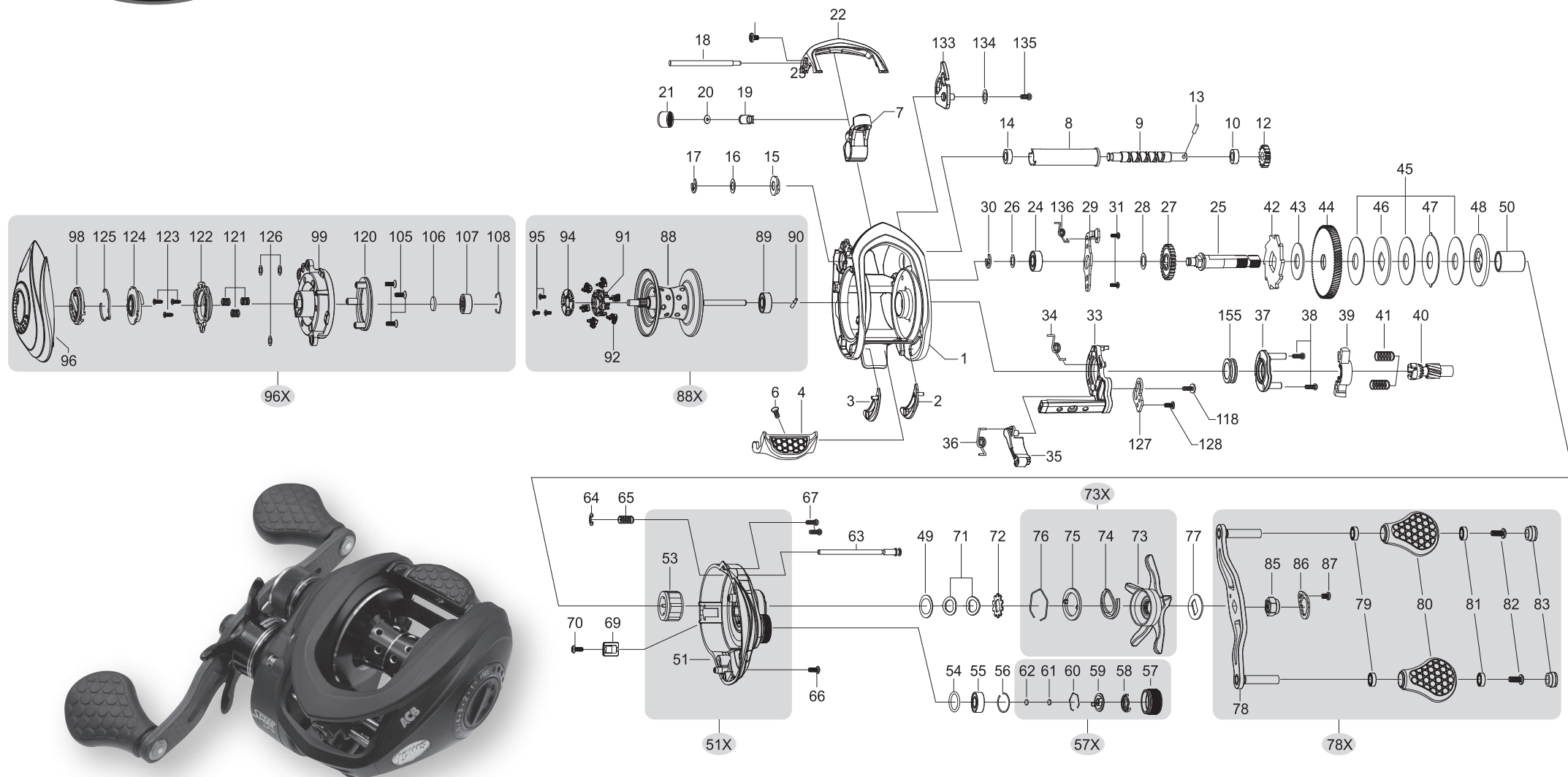
**Speed Dial Line Recognition System** Your Speed Spool® reel features the Speed Dial, a convenient line indicator dial on the spool's tension knob. Easily identify the line type and pound test on the reel. Use a coin to turn the inner dial to line up the indicator arrows marked with M - Monofilament, F - Fluorocarbon, B - Braid with the correct pound test line.

**Bowed 95 mm Carbon Fiber Handle** Our 95mm bowed carbon fiber handle will give you all the cranking power you need. The Lew's combat style grip knobs are an added bonus known for a comfortable grip for all day fishing.



# SPEED SPOOL® LFS

TP1HA, TP1SHA, TP1XHA



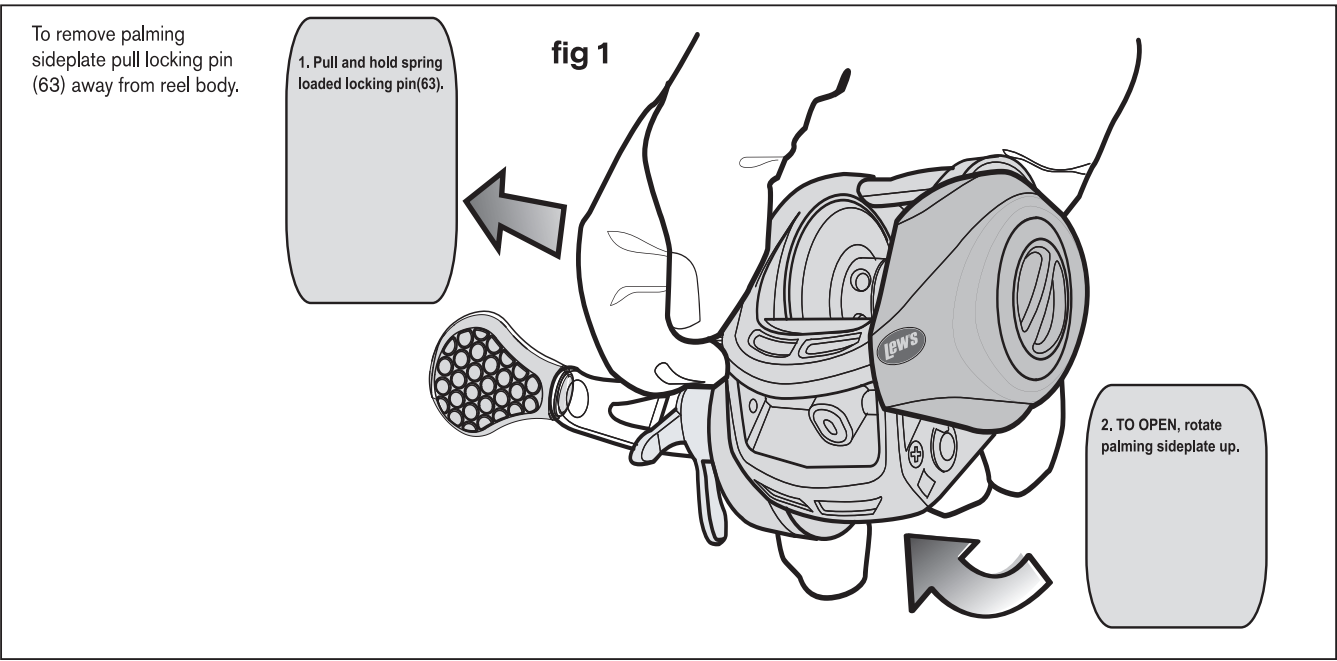
KEY #	PART NAME	KEY #	PART NAME	KEY #	PART NAME
1	FRAME	42	RATCHET	82	HANDLE KNOB SCREW-2
2	CLUTCH BAR PLATE-R	43	RATCHET WASHER	83	HANDLE KNOB CAP-2
3	CLUTCH BAR PLATE-L	44	DRIVE GEAR	85	HANDLE NUT
4	CLUTCH BAR	45	DRAG WASHER-L (3)	86	HANDLE NUT RETAINER
6	CLUTCH BAR SCREW	47	DRAG WASHER-A	87	HANDLE NUT RETAINER SCREW
7	LEVELWIND ASSEMBLY	48	DRAG WASHER-D (2)	88	SPOOL
8	PIPE	49	SLEEVE WASHER (OPT)	88X	SPOOL ASSEMBLY
9	WORM SHAFT	50	SLEEVE	89	BALL BEARING
10	BALL BEARING	51	GEAR SIDEPLATE	90	PIN
12	IDLER(S)	51X	GEAR SIDEPLATE ASSEMBLY	91	BRAKE HOLDER
13	WORM SHAFT PIN	53	ONE-WAY CLUTCH	92	BRAKE SHOE ASSEMBLY -6
14	BALL BEARING	54	O-RING	94	BRAKE HOLDER PLATE
15	WORM SHAFT BUSHING (B)	55	BALL BEARING	95	BRAKE HOLDER PLATE SCREW -3
16	WORM SHAFT WASHER (OPT)	56	BEARING RETAINER	96	PALM SIDEPLATE
17	E-RING	57	CAST CONTROL CAP	96X	PALM SIDEPLATE ASSEMBLY
18	PILLAR	57X	CAST CONTROL CAP ASSEMBLY	98	CONTROL DIAL
19	LEVELWIND PIN	57	CLICKER	99	SPOOL COVER
20	SPACER (OPTIONAL)	57	CLICK PLATE	105	SPOOL COVER SCREW-3
21	LEVELWIND NUT	57	CLICK PLATE RETAINER	106	SPOOL SPACER-A
22	FRONT COVER	61	TENSION WASHER	107	BALL BEARING
23	FRONT COVER SCREW-2	62	SPOOL SPACER-B	108	BEARING RETAINER
24	BALL BEARING	63	LOCKING PIN	118	CLUTCH SCREW
25	CRANKSHAFT	64	E-RING	120	BRAKE PLATE HOLDER ASSEMBLY
26	IDLER-L WASHER-A	65	LOCKING PIN SPRING	121	SLIDE CAM SPRING-3
27	IDLER-L	66	GEAR SIDEPLATE SCREW-A	122	SLIDE CAM-H
28	IDLER-L WASH-B	67	GEAR SIDEPLATE SCREW-B-2	123	SLIDE CAM SCREW
29	BEARING PLATE	69	LUBE PORT CAP	124	SLIDE CAM-D
30	E-RING	70	LUBE PORT CAP SCREW	125	CLICK SPRING
31	BEARING PLATE SCREW-2	71	DRAG SPRING WASHER-2	126	SPOOL COVER SPACER (OPT)
33	CLUTCH CAM	72	CLICK PLATE ASSEMBLY	127	LINK PLATE
34	CLUTCH SPRING	73	STAR DRAG	128	LINK PLATE SCREW
35	KICK LEVER	73X	STAR DRAG ASSEMBLY	133	SPEED KEEPER
36	KICK LEVER SPRING	77	HANDLE WASHER	134	SPEED KEEPER WASHER (OPTIONAL)
37	CAM PLATE	78	HANDLE	135	SPEED KEEPER SCREW
38	CLUTCH CAM SCREW	78X	HANDLE ASSEMBLY	136	SPEED KEEPER SPRING
39	PINION YOKE	79	BALL BEARING-2	155	BUSHING
40	PINION GEAR	80	HANDLE KNOB-2		
41	PINION YOKE SPRING (2)	81	BALL BEARING-2		



**MAINTENANCE AND CARE**

When applying lubricant to your Speed Spool reel, avoid using multi-purpose oil. Use lightweight oils or greases made for fishing reels. Apply oil to all bearings, the crankshaft and the worm gear. Apply grease to the bushings, pinion gears, drive gears, and crank gears.

After usage, your reel should be inspected for dirt or sand and cleaned if excessive build-up is present. If your reel has come in contact with saltwater it is important to flush all parts with water, dry and re-lubricate your reel. Through diligent cleaning and maintenance your Lew's reel will provide you with years of reliability and sound performance.



# LEW'S® SPEED SPOOL® LFS

Driven by innovation – Fueled with Passion  
Feel the Difference!

## TP1HLA

Left Hand / Gaucher

Mano izquierda



### Reel Specifications

Model	Weight (oz.)	Line Capacity (yds./lbs.)	Gear Ratio	RPT* (in.)
TP1HLA	6.4	120/12	6.8:1	28"

\*Rotation per turn

### FEATURES:

- One-piece aluminum frame
- Premium 11-bearing system with stainless steel double shielded ball bearings and Zero Reverse® one-way clutch bearing
- P2 bearing supported pinion gear provides precise alignment and solid stability, resulting in a smoother operation and extended gear life
- SpeedCast® QuiteCast externally Adjustable Centrifugal Brake (ACB) system
- High strength solid brass Speed Gears, cut on precision Hamai CNC gear hobbing machines
- Durable carbon fiber drag, provides up to 20lbs. of drag power
- Double anodized aluminum spool tension adjustment knob with Lew's patented Speed dial line indicator
- Audible click, bowed, double anodized aluminum drag star
- Lew's patented Speed Keeper hook keeper
- Zirconia line guide
- External lube port

## Performance – Right out of the Box!

**Speed Spool LFS Baitcast reels are designed to be Lighter, Faster, and Stronger.**

Your Speed Spool® LFS reel is designed to be Lighter, Faster and Stronger. From the way it conforms to your hand, to the way it reacts crisply and effortlessly to your command, you'll know the minute you grab onto your Speed Spool® LFS that you've got a quality reel. Your Speed Spool LFS reel exploits several new developments which will allow you to set yourself apart from the competition.

**One-piece Aluminum Frame** Your Speed Spool® reel utilizes a one-piece all aluminum frame so that you'll never have to worry about frame torque or twisting.

**Machine Forged Double Anodized Aluminum Spool** The machine forged double anodized aluminum spool of your Speed Spool reel is engineered for deep capacity and double anodized for superior oxidation and abrasion resistance.



**Speed Gears** Lew's Speed Gears are cut on precision Hamai CNC gear hobbing machines resulting in an efficient drive train with less gear feel.



**P2 Bearing** The P2 bearing supported pinion maintains precise alignment with the drive gear for improved gear lie. The result is smooth crank power even when under load. An added benefit is reduced friction with the spool shaft resulting in enhanced casting performance.



**Zero Reverse Bearing** The handle on your Speed Spool reel will only rotate forward for rock solid hook setting. When you release the handle, it will hold its position because of the Zero Reverse® bearing, never losing an inch on your catch; an invaluable property to have when you're pulling it in.



**QuietCast 6-Pin Externally Adjustable Centrifugal Brake System (ACB)** The QuietCast® Adjustable Centrifugal Brake System delivers an extreme range of braking power without the noise normally associated with centrifugal brake systems. Adjustable from free spool to maximum by simply clicking its external dial to choose among 27 variable settings. The QuietCast system puts you in control of your casts, perfectly aligning brake power to conditions. With this system you will have precise casting control over light lures, while maximizing casting distance with all lures.

**Speed Dial Line Recognition System** Your Speed Spool® reel features the Speed Dial, a convenient line indicator dial on the spool's tension knob. Easily identify the line type and pound test on the reel. Use a coin to turn the inner dial to line up the indicator arrows marked with M - Monofilament, F - Fluorocarbon, B - Braid with the correct pound test line.

**Bowed 95 mm Carbon Fiber Handle** Our 95mm bowed carbon fiber handle will give you all the cranking power you need. The Lew's combat style grip knobs are an added bonus known for a comfortable grip for all day fishing.

### ATTENTION BRAIDED LINE USERS!

If your Lew's Baitcast reel has pre-drilled holes in the spool, you may tie your braid directly to the spool, by passing the braid thru the provided holes and tying a uni-knot.

If your Lew's baitcast reel does not have pre-drilled holes in the spool, you will need to first tie on and spool at least 20 revolutions of monofilament line, and then tie your braided line to the monofilament line, with either a back-to-back uni-knot or an Albright knot.

Continue to spool your reel as normal, keeping strong tension on the line to ensure the line is firmly wound onto the spool to keep from "digging in" to underlying line layers when pressure is put on the line from fighting fish.

**FAILURE TO PROPERLY SPOOL BRAIDED LINE ONTO YOUR REELS SPOOL WILL RESULT IN LINE SLIPPAGE, AND THE IMPRESSION YOUR DRAG IS NOT WORKING PROPERLY.**

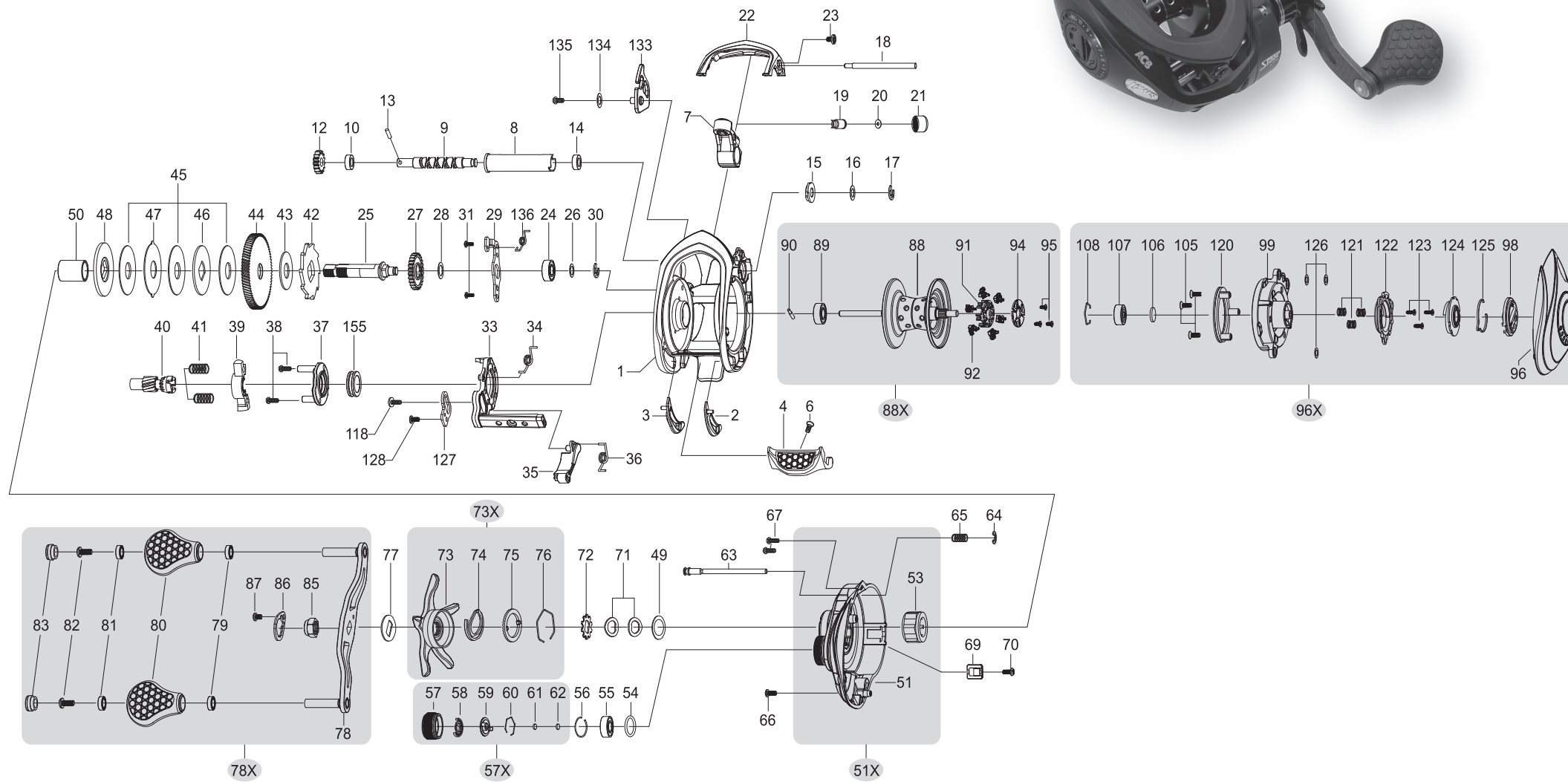




# SPEED SPOOL® LFS

## TP1HLA

Left Hand / Gaucher  
Mano izquierda



KEY #	PART NAME	KEY #	PART NAME	KEY #	PART NAME
1	FRAME	42	RATCHET	82	HANDLE KNOB SCREW-2
2	CLUTCH BAR PLATE-R	43	RATCHET WASHER	83	HANDLE KNOB CAP-2
3	CLUTCH BAR PLATE-L	44	DRIVE GEAR	85	HANDLE NUT
4	CLUTCH BAR	45	DRAG WASHER-L (3)	86	HANDLE NUT RETAINER
6	CLUTCH BAR SCREW	47	DRAG WASHER-A	87	HANDLE NUT RETAINER SCREW
7	LEVELWIND ASSEMBLY	48	DRAG WASHER-D (2)	88	SPOOL
8	PIPE	49	SLEEVE WASHER (OPT)	88X	SPOOL ASSEMBLY
9	WORM SHAFT	50	SLEEVE	89	BALL BEARING
10	BALL BEARING	51	GEAR SIDEPLATE	90	PIN
12	IDLER(S)	51X	GEAR SIDEPLATE ASSEMBLY	91	BRAKE HOLDER
13	WORM SHAFT PIN	53	ONE-WAY CLUTCH	92	BRAKE SHOE ASSEMBLY -6
14	BALL BEARING	54	O-RING	94	BRAKE HOLDER PLATE
15	WORM SHAFT BUSHING (B)	55	BALL BEARING	95	BRAKE HOLDER PLATE SCREW -3
16	WORM SHAFT WASHER (OPT)	56	BEARING RETAINER	96	PALM SIDEPLATE
17	E-RING	57	CAST CONTROL CAP	96X	PALM SIDEPLATE ASSEMBLY
18	PILLAR	57X	CAST CONTROL CAP ASSEMBLY	98	CONTROL DIAL
19	LEVELWIND PIN	57	CLICKER	99	SPOOL COVER
20	SPACER (OPTIONAL)	57	CLICK PLATE	105	SPOOL COVER SCREW-3
21	LEVELWIND NUT	57	CLICK PLATE RETAINER	106	SPOOL SPACER-A
22	FRONT COVER	61	TENSION WASHER	107	BALL BEARING
23	FRONT COVER SCREW-2	62	SPOOL SPACER-B	108	BEARING RETAINER
24	BALL BEARING	63	LOCKING PIN	118	CLUTCH SCREW
25	CRANKSHAFT	64	E-RING	120	BRAKE PLATE HOLDER ASSEMBLY
26	IDLER-L WASHER-A	65	LOCKING PIN SPRING	121	SLIDE CAM SPRING-3
27	IDLER-L	66	GEAR SIDEPLATE SCREW-A	122	SLIDE CAM-H
28	IDLER-L WASH-B	67	GEAR SIDEPLATE SCREW-B -2	123	SLIDE CAM SCREW
29	BEARING PLATE	69	LUBE PORT CAP	124	SLIDE CAM-D
30	E-RING	70	LUBE PORT CAP SCREW	125	CLICK SPRING
31	BEARING PLATE SCREW-2	71	DRAG SPRING WASHER-2	126	SPOOL COVER SPACER (OPT)
33	CLUTCH CAM	72	CLICK PLATE ASSEMBLY	127	LINK PLATE
34	CLUTCH SPRING	73	STAR DRAG	128	LINK PLATE SCREW
35	KICK LEVER	73X	STAR DRAG ASSEMBLY	133	SPEED KEEPER
36	KICK LEVER SPRING	77	HANDLE WASHER	134	SPEED KEEPER WASHER (OPTIONAL)
37	CAM PLATE	78	HANDLE	135	SPEED KEEPER SCREW
38	CLUTCH CAM SCREW	78X	HANDLE ASSEMBLY	136	SPEED KEEPER SPRING
39	PINION YOKE	79	BALL BEARING-2	155	BUSHING
40	PINION GEAR	80	HANDLE KNOB-2		
41	PINION YOKE SPRING (2)	81	BALL BEARING-2		

**MAINTENANCE AND CARE**

When applying lubricant to your Speed Spool reel, avoid using multi-purpose oil. Use lightweight oils or greases made for fishing reels. Apply oil to all bearings, the crankshaft and the worm gear. Apply grease to the bushings, pinion gears, drive gears, and crank gears.

After usage, your reel should be inspected for dirt or sand and cleaned if excessive build-up is present. If your reel has come in contact with saltwater it is important to flush all parts with water, dry and re-lubricate your reel. Through diligent cleaning and maintenance your Lew's reel will provide you with years of reliability and sound performance.

