



Driven by innovation — *Fueled with Passion* Feel the Difference!

ATTENTION BRAIDED LINE USERS!

If your Lew's Baitcast reel has pre-drilled holes in the spool, you may tie your braid directly to the spool, by passing the braid thru the provided holes and tying a uni-knot.

If your Lew's baitcast reel does not have pre-drilled holes in the spool, you will need to first tie on and spool at least 20 revolutions of monofilament line, and then tie your braided line to the monofilament line, with either a back-to-back uni-knot or an Albright knot.

Continue to spool your reel as normal, keeping strong tension on the line to ensure the line is firmly wound onto the spool to keep from "digging in" to underlying line layers when pressure is put on the line from fighting fish.

FAILURE TO PROPERLY SPOOL BRAIDED LINE ONTO YOUR REELS SPOOL WILL RESULT IN LINE SLIPPAGE, AND THE IMPRESSION YOUR DRAG IS NOT WORKING PROPERLY.

Reel Specifications

Model	Weight (oz.)	Gear Ratio	Line Capacity (yd./lb.)	Max Drag (lb.)	RPT*
KVD1H	7.2	6.2:1	120/12	20	25"
KVD1SH	7.2	7.5:1	120/12	20	31"
KVD1XH	7.2	8.3:1	120/12	20	35"

*Recovery per turn.

FEATURES:

- One-piece aluminum frame
- Premium 10-bearing system with stainless steel double shielded ball bearings and Zero Reverse® one-way clutch bearing
- P2 bearing supported pinion gear provides precise alignment and solid stability, resulting in smoother operation and extended gear life
- Externally-adjustable Multi-Setting Brake (MSB) dual cast control system utilizing both an external click-dial for setting the magnetic brake, plus 4 individually disengaging, disk-mounted internal brake shoes that operate on centrifugal force
- Lightweight anodized aluminum 34mm spool
- High strength solid brass Speed Gears®, cut on precision Hamai CNC gear hobbing machines
- Smooth carbon fiber drag system provides up to 20 lbs. drag power
- Audible click, bowed, graphite drag star
- Zirconia line guide • External lube port
- Bowed, lightweight, 95MM aluminum reel handle with custom EVA knobs

Performance — Right out of the Box!

Your Speed Spool® LFS reel is designed to be Lighter, Faster and Stronger. From the way it conforms to your hand, to the way it reacts crisply and effortlessly to your command, you'll know the minute you grab onto your Speed Spool LFS that you've got a quality reel. Your Speed Spool LFS reel exploits several new developments which will allow you to set yourself apart from the competition.



One-piece Aluminum Frame Your Speed Spool® reel utilizes a one-piece all aluminum frame so that you'll never have to worry about frame torque or twisting.

Lightweight Anodized Aluminum Spool The spool of your Speed Spool reel has been engineered to maximize casting distance, anodized to withstand oxidation and abrasion.



Speed Gears® Lew's Speed Gears are cut on precision Hamai CNC gear hobbing machines resulting in an efficient drive train with less gear feel.



P2 Bearing The P2 bearing supported pinion maintains precise alignment with the drive gear for improved gear lie. The result is smooth cranking power even when under load. An added benefit is reduced friction with the spool shaft resulting in enhanced casting performance.



Zero Reverse® Bearing The handle on your Speed Spool reel will only rotate forward for rock solid hook setting. When you release the handle, it will hold its position because of the Zero Reverse bearing, never losing an inch on your catch; an invaluable property to have when you're pulling it in.

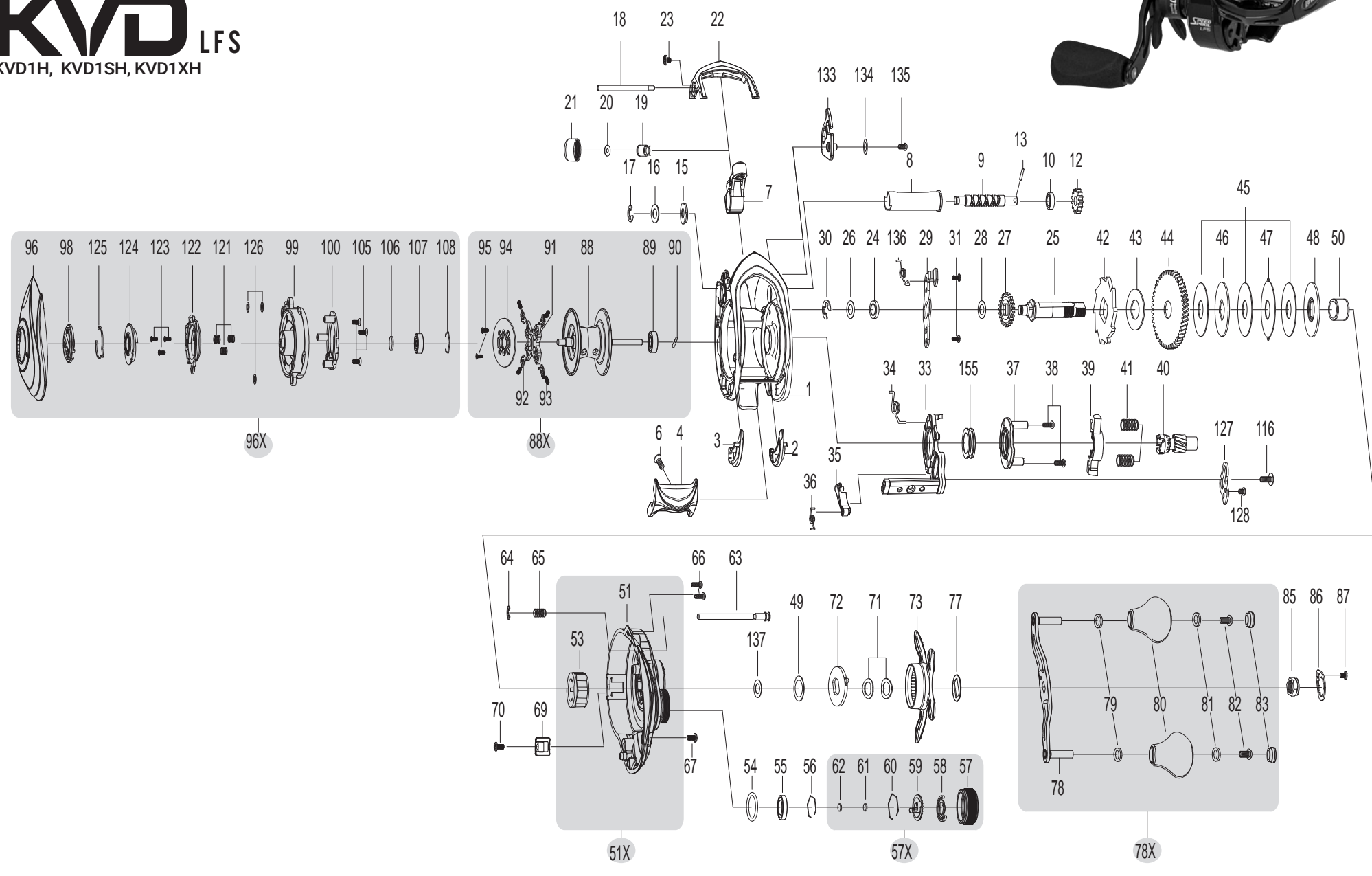


Multi-Setting Braking System (MSB) In order to combat backlash your Speed Spool® reel features both an externally-adjustable, full-release magnetic braking system as well as an internally adjustable centrifugal brake system. The magnetic brakes give consistent braking throughout the entire cast and are adjusted by the palming sideplate dial. The centrifugal brakes provide initial braking at the beginning of the cast to reduce backlash and can be turned off to reduce braking by removing the palming sideplate and pushing the white pin(s) towards the center of the spool until they click. To turn them back on push the white pin(s) away from the center of the spool until they click.

Cast Control System A second feature exists to prevent backlash, the Cast Control System. An adjustment knob is found next to the star drag. The function saddles the spool shaft with steady pressure in order to stabilize spool speed.

To calibrate the system reel your lure in until it rests on the tip of the rod, then tighten the knob until taut. Depress the thumb bar, and holding the rod horizontally loosen the knob slowly until the lure begins to descend. The spool should continue to spin after the lure contacts the ground, but should not complete more than one full rotation. If the spool does not continue to spin, the knob is too tight. If the spool completes more than one rotation, the knob is too loose. Repeat until you have achieved the desired results.

Bowed 95 mm Aluminum Handle Our 95mm bowed aluminum handle will give you all the cranking power you need. The custom EVA knobs are an added bonus known for a comfortable grip for all day fishing.



KEY #	PART NAME
1	FRAME
2	CLUTCH BAR PLATE-R
3	CLUTCH BAR PLATE-L
4	CLUTCH BAR
6	CLUTCH BAR SCREW
7	LEVELWIND ASSEMBLY
8	PIPE
9	WORM SHAFT
10	BALL BEARING
12	IDLER-S
13	WORM SHAFT PIN
15	WORM SHAFT BUSHING-B
16	WORM SHAFT WASHER
17	E-RING
18	PILLAR
19	LEVELWIND PIN
20	SPACER(OPTIONAL)
21	LEVEL WIND NUT
22	FRONT COVER
23	FRONT COVER SCREW
24	BALL BEARING
25	CRANK SHAFT
26	CRANK SHAFT WASHER(OPTIONAL)
27	IDLER-L
28	IDLER-L WASHER-B
29	BEARING PLATE
30	E-RING
31	BEARING PLATE SCREW
33	CLUTCH CAM
34	CLUTCH SPRING
35	KICK LEVER
36	KICK LEVER SPRING
37	CAM PLATE
38	CAM PLATE SCREW
39	PINION YOKE
40	PINION GEAR
41	PINION YOKE SPRING
42	RATCHET
43	RATCHET WASHER
44	DRIVE GEAR

MAINTENANCE AND CARE

When applying lubricant to your Speed Spool reel, avoid using multi-purpose oil. Use lightweight oils or greases made for fishing reels. Apply oil to all bearings, the crankshaft and the worm gear. Apply grease to the bushings, pinion gears, drive gears, and crank gears.

After usage, your reel should be inspected for dirt or sand and cleaned if excessive build-up is present. If your reel has come in contact with saltwater it is important to flush all parts with water, dry and re-lubricate your reel. Through diligent cleaning and maintenance your Lew's reel will provide you with years of reliability and sound performance.

