



LASER® SG
LSG100A, LSG200A
LSG300A, LSG400A

**Driven by innovation —
Fueled with Passion
Feel the Difference!**



8 Bearing System

Reel Specifications

Model	Weight (oz.)	Gear Ratio	Line Capacity (yd./lb.)	Max Drag(lb.)	RPT*
LSG100A	6.6	5.2:1	120/6	7	23"
LSG200A	8.5	5.2:1	120/8	14	25"
LSG300A	8.7	5.2:1	180/10	14	27"
LSG400A	9.4	5.2:1	190/12	18	30"

*Recovery per turn.

FEATURES :

- Rugged lightweight graphite body and skeletal rotor
- Premium 8-bearing system with Zero Reverse® one-way clutch bearing
- Double anodized baid ready knurled aluminum spool
- Speed Lube® for exceptional smoothness
- Fold down aluminum handle with Lew's® custom paddle
- Adjustable for right or left hand retrieve

Maintenance and Care

While applying lubricant to your Speed Spin® reel, avoid using multi-purpose oil. Use lightweight silicone based oils or greases made for fishing reels. Apply oil to all bearings and the main shaft. Apply grease to the bushings, pinion gears and main gears.

After usage your reel should be inspected for dirt or sand and cleaned if excessive buildup is present. If your reel has come in contact with saltwater it is important to flush all parts with water, dry and re-lubricate your reel. Through diligent cleaning and maintenance your Lew's® reel will provide you with years of reliability and sound performance.

ATTENTION BRAIDED LINE USERS!

If your Lew's® Spinning reel has a knurled spool or rubber arbor (designed for tying braided line directly to the spool), you can tie braid directly to your spool using a uni-knot.

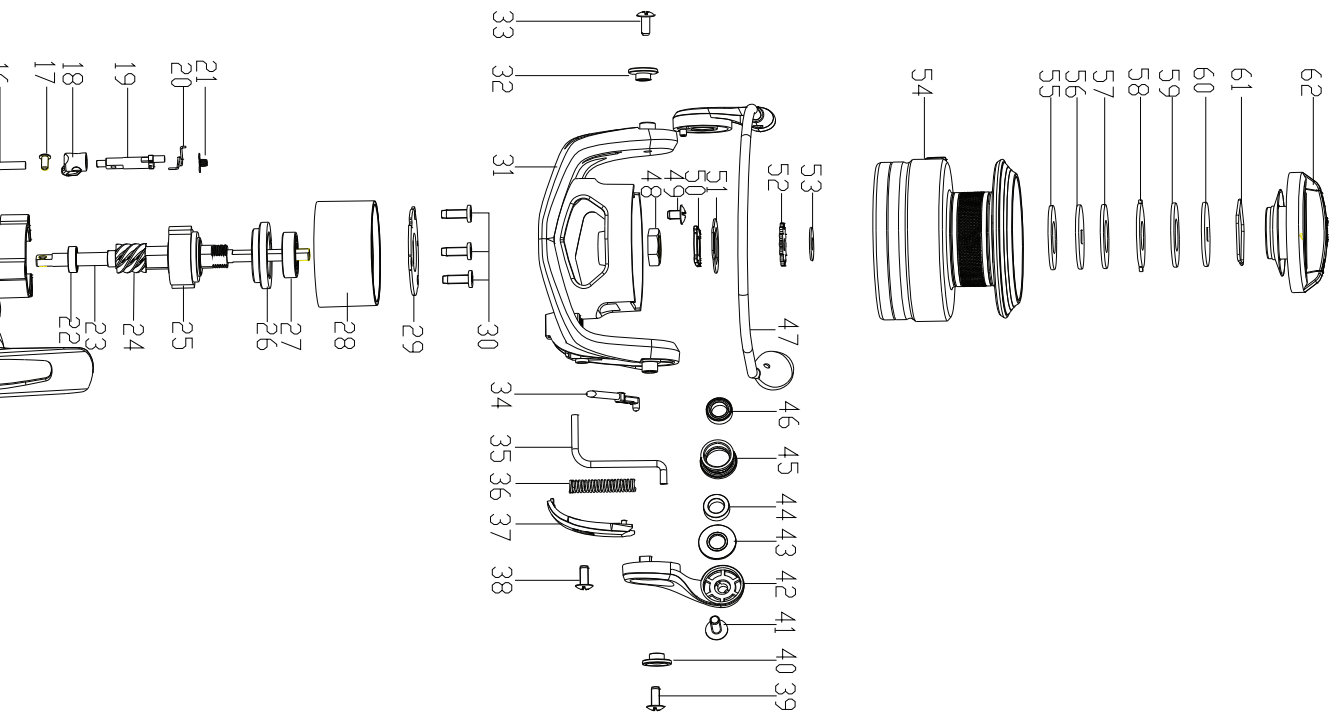
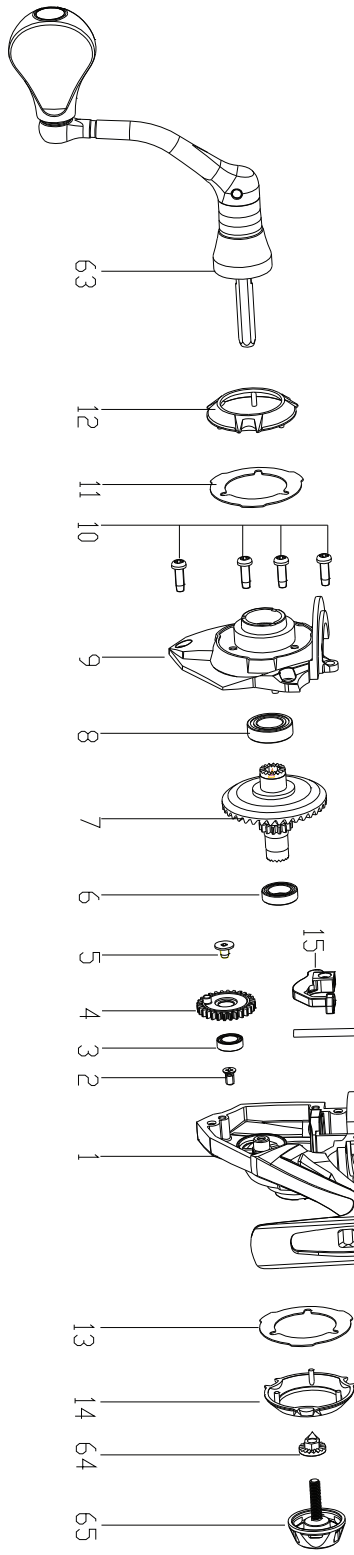
If your Lew's® spinning reel does not have a knurled spool or rubber arbor, you will need to first tie on and spool at least 20 revolutions of monofilament line, with either a back-to-back uni-knot or an Albright knot.

Continue to spool your reel as normal, keeping strong tension on the line to ensure the line is firmly wound onto the spool to keep from "digging in" to underlying line layers when pressure is put on the line from fighting fish.

FAILURE TO PROPERLY SPOOL BRAIDED LINE ONTO YOUR REELS SPOOL WILL RESULT IN LINE SLIPPAGE, AND THE IMPRESSION YOUR DRAG IS NOT WORKING PROPERLY.



LASER® SG
 LSG100A, LSG200A
 LSG300A, LSG400A



KEY#	PART NAME	KEY#	PART NAME	KEY#	PART NAME	KEY#	PART NAME
1	BODY	20	SPRING	40	CLIP	61	RING
2	SCREW	21	SPRING	41	SCREW	62	DRAG KNOB
3	BALL BEARING	22	BUSHING	42	BAIL ARM	63	HANDLE ASSY WITH 2 BALL BEARING
4	OSCILLATION GEAR	23	MAIN SHAFT	43	WASHER	64	WASHER
5	SCREW	24	PINION GEAR	44	BUSHING	65	HANDLE CAP
6	BALL BEARING	25	ONE-WAY CLUTCH BEARING	45	LINE ROLLER		
7	DRIVE GEAR	26	ONE-WAY CLUTCH FIXED BUSHING	46	BALL BEARING		
8	BALL BEARING	27	BALL BEARING	47	BAIL ASSY		
9	BODY SIDE	28	ONE-WAY CLUTCH FIXED PLATE	48	ROTOR NUT		
10	SCREW	29	ONE-WAY CLUTCH FIXED PLATE	49	SCREW		
11	BODY SIDE DECORATION INSIDE COVER	30	ONE-WAY CLUTCH FIXED SCREW	50	WASHER		
12	BODY SIDE DECORATION OUTSIDE COVER	31	ROTOR	51	WASHER		
13	BODY DECORATION INSIDE COVER	32	CLIP	52	CLICK GEAR		
14	BODY DECORATION OUTSIDE COVER	33	SCREW	53	WASHER		
15	SLIDE	34	BAIL ARM SUPPORT PIN	54	SPOOL ASSY		
16	SLIDE GUIDE PIN	35	KICK LEVER	55	LINE WASHER		
17	SCREW	36	SPRING	56	DRAG WASHER		
18	ANTI-REVERSE BUTTON	37	BAIL ARM COVER	57	LINE WASHER		
19	ANTI-REVERSE	38	SCREW	58	DRAG WASHER		
		39	SCREW	59	LINE WASHER		
				60	DRAG WASHER		

If you're looking for quality fishing gear & accessories, visit our website.