



LASER[®] MG SLP

LSG1HAMG
LSG1SHAMG



Reel Specifications

Model	Weight (oz.)	Gear Ratio	Line Capacity (yd./lb.)	Max Drag (lb.)	RPT*
LSG1HAMG	7	6.8:1	110/12	15	27"
LSG1SHAMG	7	7.5:1	110/12	15	30"

*Recovery per turn.

FEATURES:

- One-piece lightweight SLP graphite frame and side plates with 3 drain ports
- Premium 8-bearing system with stainless steel double shielded ball bearings and Zero Reverse[®] one-way clutch bearing
- Externally adjustable Magnetic Control System (MCS)
- Lightweight anodized aluminum 32mm spool
- High strength solid brass Speed Gears[®], cut on precision Hamai CNC gear hobbing machines
- Durable Rulon drag system provides up to 15lbs. drag power
- Audible click, bowed, graphite drag star
- Zirconia line guide
- Bowed 95mm aluminum handle with Lew's[®] custom SoftTouch contoured paddles

Performance — Right out of the Box!

Your Speed Spool[®] reel is designed for performance and functionality. From the way it conforms to your hand, to the way it reacts crisply and effortlessly to your command, you'll know the minute you grab onto your Speed Spool[®] that you've got a quality reel. Your Speed Spool[®] reel exploits several new developments which will allow you to set yourself apart from the competition.

One-piece Graphite Frame and Sideplates Your Speed Spool[®] reel utilizes a one-piece, lightweight graphite frame and sideplates. Lightweight plus strong, so you'll never have to worry about frame torque or twisting.

Lightweight Anodized Aluminum Spool The spool of your Speed Spool reel has been engineered to maximize casting distance, anodized to withstand oxidation and abrasion.



Speed Gears[®] Lew's Speed Gears are cut on precision Hamai CNC gear hobbing machines resulting in an efficient drive train with less gear feel.



Zero Reverse[®] Bearing The handle on your Speed Spool reel will only rotate forward for rock solid hook setting. When you release the handle, it will hold its position because of the Zero Reverse bearing, never losing an inch on your catch; an invaluable property to have when you're pulling it in.



Full-Release Magnetic Control System (MCS)

In order to combat backlash your Speed Spool reel is furnished with an externally adjustable, full-release magnetic braking system. As the spool accelerates it experiences magnetic resistance, which can be controlled with a dial on the palming sideplate. A full-release magnetic brake has the ability to be backed for enough away from the spool to completely negate any effect

on the acceleration of the spool.

Cast Control System A second feature to prevent backlash, the Cast Control System. An adjustment knob is found next to the star drag. The function saddles the spool shaft with steady pressure in order to stabilize spool speed.

To calibrate the system reel your lure in until it rests on the tip of the rod, then tighten the knob until taut. Depress the thumb bar, and holding the rod horizontally loosen the knob slowly until the lure begins to descend. The spool should continue to spin after the lure contacts the ground, but should not complete more than one full rotation. If the spool does not continue to spin, the knob is too tight. If the spool completes more than one rotation, the knob is too loose. Repeat until you have achieved the desired results.

Bowed Aluminum Handle The bowed aluminum handle will give you all the cranking power you need. The Lew's custom SoftTouch handle knobs are an added bonus and will provide comfortable fit for all day fishing.

Driven by innovation — Fueled with Passion

Feel the Difference!

ATTENTION BRAIDED LINE USERS!

If your Lew's Baitcast reel has pre-drilled holes in the spool, you may tie your braid directly to the spool, by passing the braid thru the provided holes and tying a uni-knot.

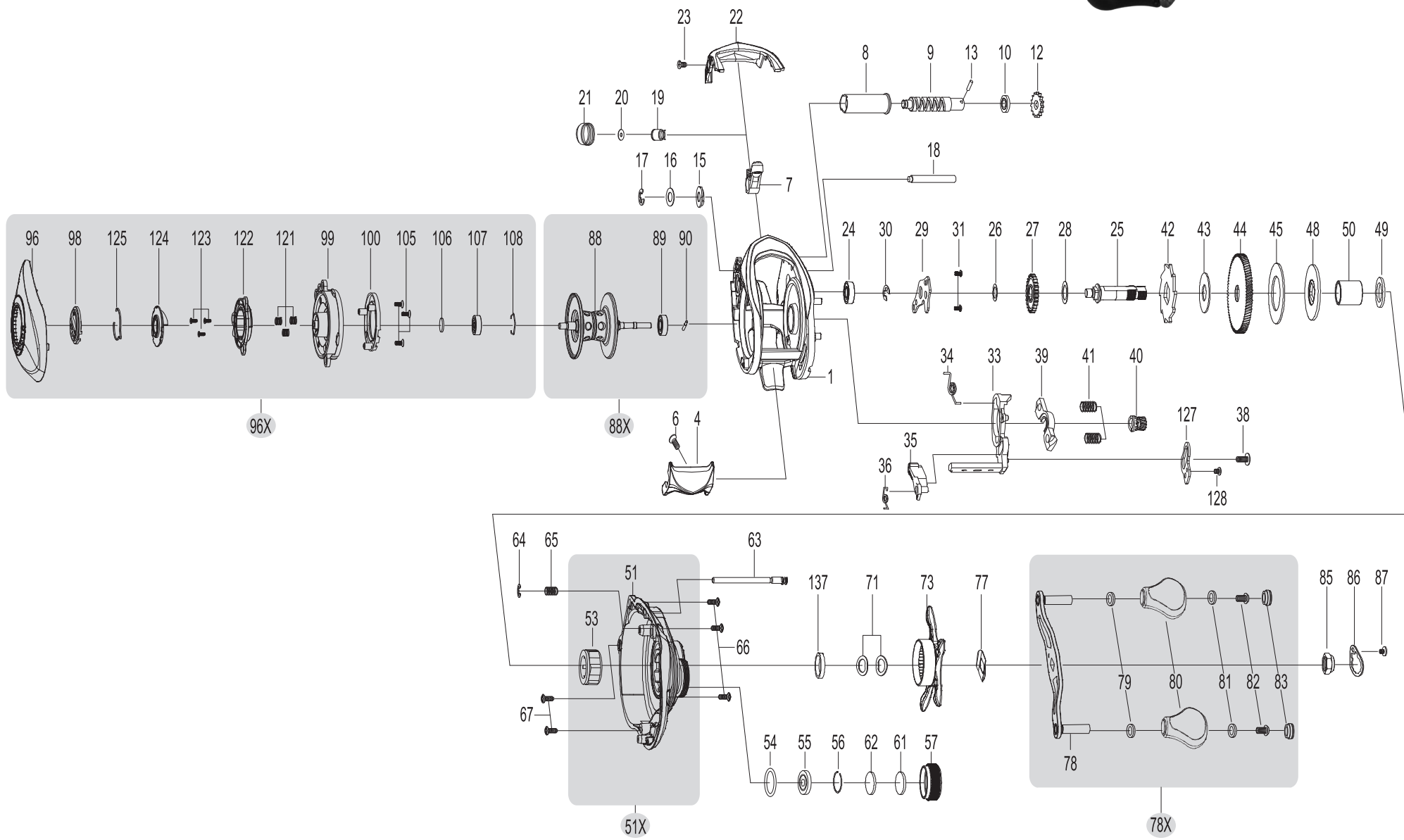
If your Lew's baitcast reel does not have pre-drilled holes in the spool, you will need to first tie on and spool at least 20 revolutions of monofilament line, and then tie your braided line to the monofilament line, with either a back-to-back uni-knot or an Albright knot.

Continue to spool your reel as normal, keeping strong tension on the line to ensure the line is firmly wound onto the spool to keep from "digging in" to underlying line layers when pressure is put on the line from fighting fish.

FAILURE TO PROPERLY SPOOL BRAIDED LINE ONTO YOUR REELS SPOOL WILL RESULT IN LINE SLIPPAGE, AND THE IMPRESSION YOUR DRAG IS NOT WORKING PROPERLY.



LASER® MG
SLP
 LSG1HAMG
 LSG1SHAMG



KEY #	PART NAME	KEY #	PART NAME	KEY #	PART NAME
1	FRAME	39	PINION YOKE	80	HANDLE KNOB-2
4	CLUTCH BAR ASSEMBLY	40	PINION GEAR	81	BUSHING-2
6	CLUTCH BAR SCREW	41	PINION YOKE SPRING -2	82	HANDLE KNOB SCREW-2
7	LEVELWIND ASSEMBLY	42	RATCHET	83	HANDLE KNOB CAP-2
8	PIPE	43	RATCHET WASHER	85	HANDLE NUT
9	WORM SHAFT	44	DRIVE GEAR	86	HANDLE NUT RETAINER
10	BALL BEARING	45	DRAG WASHER-L	87	HANDLE NUT RETAINER SCREW
12	IDLER(S)	48	DRAG WASHER-D	88	SPOOL
13	WORM SHAFT PIN	49	SLEEVE WASHER (OPT)	88X SPOOL ASSEMBLY	
15	WORM SHAFT BUSHING (B)	50	SLEEVE	89	BALL BEARING
16	WORM SHAFT WASHER (OPT)	51	GEAR SIDEPLATE	90	PIN
17	E-RING	51X GEAR SIDEPLATE ASSEMBLY		96	PALM SIDEPLATE
18	PILLAR	53	ONE-WAY CLUTCH BEARING	96X PALM SIDEPLATE ASSEMBLY	
19	LEVELWIND PIN	54	O-RING	98	CONTROL DIAL
20	SPACER (OPTIONAL)	55	BALL BEARING	99	SPOOL COVER
21	LEVELWIND NUT	56	BEARING RETAINER	100	MAGNET HOLDER ASSEMBLY
22	FRONT COVER	57	CAST CONTROL CAP	105	SPOOL COVER SCREW-3
23	FRONT COVER SCREW-2	57X CAST CONTROL CAP ASSEMBLY		106	SPOOL SPACER-A
24	BALL BEARING	61	TENSION WASHER	107	BALL BEARING
25	CRANKSHAFT	62	SPOOL SPACER-B	108	BEARING RETAINER
26	IDLER-L WASHER-A	63	LOCKING PIN	121	SLIDE CAM SPRING-3
27	IDLER-L	64	E-RING	122	SLIDE CAM-H
28	IDLER-L WASHER-B	65	LOCKING PIN SPRING	123	SLIDE CAM SCREW
29	BEARING PLATE-2	66	GEAR SIDEPLATE SCREW-A	124	SLIDE CAM-D
30	E-RING	67	GEAR SIDEPLATE SCREW-B	125	CLICK SPRING
31	BEARING PLATE SCREW-2	71	DRAG SPRING WASHER-2	127	LINK PLATE
33	CLUTCH CAM	73	STAR DRAG	128	LINK PLATE SCREW
34	CLUTCH SPRING	77	HANDLE WASHER	137	DRAG SPACER
35	KICK LEVER	78	HANDLE		
36	KICK LEVER SPRING	78X HANDLE ASSEMBLY			
38	CLUTCH CAM SCREW	79	BUSHING-2		

MAINTENANCE AND CARE

When applying lubricant to your Speed Spool reel, avoid using multi-purpose oil. Use lightweight oils or greases made for fishing reels. Apply oil to all bearings, the crankshaft and the worm gear. Apply grease to the bushings, pinion gears, drive gears, and crank gears.

After usage, your reel should be inspected for dirt or sand and cleaned if excessive build-up is present. If your reel has come in contact with saltwater it is important to flush all parts with water, dry and re-lubricate your reel. Through diligent cleaning and maintenance your Lew's reel will provide you with years of reliability and sound performance.

