

Mach[®] SMASH

Lew's MHS200, MHS300

**Driven by innovation –
Fueled with Passion
Feel the Difference!**



8 Bearing System

HS
6.2:1
HIGH SPEED

SPEED GEARS

**SKELETAL
SPEED
FACTOR**

ZERO
REVERSE[®]

COMBAT GRIP

Reel Specifications

Model	Weight (oz.)	Max Drag (lb)	Gear Ratio	Line Capacity (yd./lb.)	RPT*
MHS200	8.4	13	6.2:1	120/8	31"
MHS300	9.1	17	6.2:1	145/10	32"

*Recovery per turn.

FEATURES:

- Rugged, lightweight graphite body
- 8-bearing system includes Zero Reverse[®] one-way clutch bearing
- Skeletal graphite rotor
- Anodized ported knurled aluminum spool
- Fold down anodized aluminum handle with Combat Grip[®]
- Strong and balanced aluminum bail
- High strength solid brass Speed Gears[®], cut on precision Hamai CNC gear hobbing machines
- Speed Lube[®] for exceptional smoothness and uninterrupted performance in all weather conditions from extreme heat to freezing cold
- Adjustable for right or left hand retrieve

Maintenance and Care

While applying lubricant to your Speed Spin[®] reel, avoid using multi-purpose oil. Use lightweight silicone based oils or greases made for fishing reels. Apply oil to all bearings and the main shaft. Apply grease to the bushings, pinion gears and main gears.

After usage your reel should be inspected for dirt or sand and cleaned if excessive buildup is present. If your reel has come in contact with saltwater it is important to flush all parts with water, dry and re-lubricate your reel. Through diligent cleaning and maintenance your Lew's[®] reel will provide you with years of reliability and sound performance.

ATTENTION BRAIDED LINE USERS!

If your Lew's[®] Spinning reel has a knurled spool or rubber arbor (designed for tying braided line directly to the spool), you can tie braid directly to your spool using a uni-knot.

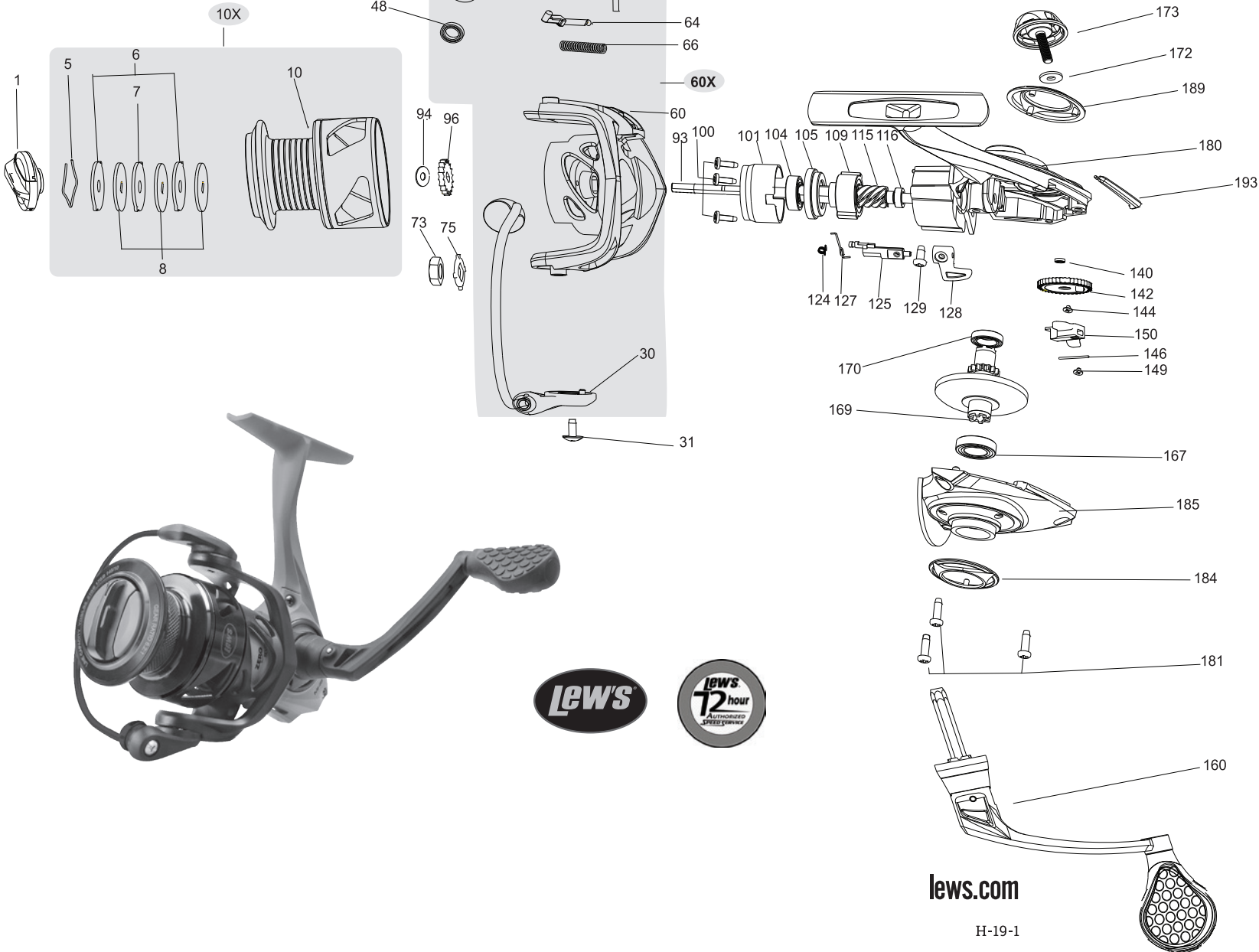
If your Lew's[®] spinning reel does not have a knurled spool or rubber arbor, you will need to first tie on and spool at least 20 revolutions of monofilament line, with either a back-to-back uni-knot or an Albright knot.

Continue to spool your reel as normal, keeping strong tension on the line to ensure the line is firmly wound onto the spool to keep from "digging in" to underlying line layers when pressure is put on the line from fighting fish.

FAILURE TO PROPERLY SPOOL BRAIDED LINE ONTO YOUR REELS SPOOL WILL RESULT IN LINE SLIPPAGE, AND THE IMPRESSION YOUR DRAG IS NOT WORKING PROPERLY.

Mach[®] SMASH

MHS200, MHS300



KEY#	PART NAME	KEY#	PART NAME	KEY#	PART NAME	KEY#	PART NAME
1	DRAG KNOB ASSEMBLY (FD)	60	ROTOR	115	PINION GEAR	170	BALL BEARING (C2)
5	RETAINING RING	60X	ROTOR ASSEMBLY	116	PINION BUSHING	172	HANDLE CAP WASHER
6	KEYED DRAG WASHER (2)	63	TRIP BAR	124	A/R PAWL SPRING	173	HANDLE SCREW CAP
7	EARED DRAG WASHER	64	TRIP LINKAGE	125	A/R STEM	180	BODY
8	DRAG WASHER (3)	66	BAIL SPRING	127	A/R STEM SPRING	181	BODY SIDE PLATE SCREW (L1) (3)
10	SPOOL	67	ROTOR COVER (A)	128	A/R LEVER	184	SIDE COVER TRIM (L)
10X	SPOOL ASSEMBLY	68	ROTOR COVER SCREW (A1)	129	A/R LEVER SCREW	185	BODY SIDE PLATE (L)
30	BAIL WIRE ASSEMBLY	73	ROTOR NUT	140	OSCILLATION GEAR BALL BEARING	189	SIDE COVER TRIM (R)
31	HOLDER SCREW	75	ROTOR NUT RETAINER	142	OSCILLATION GEAR	193	REAR COVER TRIM
36	BAIL ARM SCREW	94	LINE LAY SHIM	144	OSCILLATION GEAR SCREW		
40	BAIL ARM	96	CLICK GEAR	146	SLIDER GUIDE PIN		
42	BAIL SCREW	98	MAIN SHAFT	149	SLIDER SHAFT SCREW		
45	LINE ROLLER BUSHING (LR1)	100	BODY HEAD SCREW COVER (3)	150	SLIDER		
46	LINE ROLLER	101	BODY HEAD COVER	160	CRANK HANDLE (WITH 2 BALL BEARINGS)		
48	LINE ROLLER BALL BEARING	104	BALL BEARING	167	BALL BEARING (C1)		
		105	BEARING HOLDER	169	DRIVE GEAR		
		109	ONE-WAY CLUTCH BEARING				

lews.com

H-19-1

If you're looking for quality fishing gear & accessories, visit our website.