



Mach Crush®

MCR200A
MCR300A
MCR400A

Driven by innovation —
Fueled with Passion
Feel the Difference!



11 Bearing
System

Reel Specifications

Model	Weight (oz.)	Gear Ratio	Line Capacity (yd./lb.)	Max Drag (lb.)	RPT*
MCR200A	8.6	6.2:1	120/8	14	31"
MCR300A	8.9	6.2:1	180/10	14	32"
MCR400A	9.8	6.2:1	190/12	18	35"

*Recovery per turn.

FEATURES :

- 11-bearing system includes Zero Reverse® one-way clutch bearing
- Rugged, lightweight graphite body
- Lightweight, high strength C40 Carbon skeletal rotor
- Double anodized baid ready knurled aluminum spool
- S-curve oscillation system
- Quality solid brass pinion gear
- Aluminum handle with Winn® Dri-Tac handle knob
- Speed Lube® for exceptional smoothness and uninterrupted performance in all weather conditions from extreme heat to freezing cold
- Adjustable for right or left hand retrieve

Maintenance and Care

While applying lubricant to your Speed Spin® reel, avoid using multi-purpose oil. Use lightweight silicone based oils or greases made for fishing reels. Apply oil to all bearings and the main shaft. Apply grease to the bushings, pinion gears and main gears.

After usage your reel should be inspected for dirt or sand and cleaned if excessive buildup is present. If your reel has come in contact with saltwater it is important to flush all parts with water, dry and re-lubricate your reel. Through diligent cleaning and maintenance your Lew's® reel will provide you with years of reliability and sound performance.

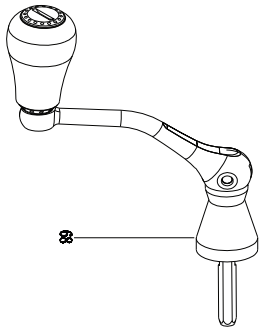
ATTENTION BRAIDED LINE USERS!

If your Lew's® Spinning reel has a knurled spool or rubber arbor (designed for tying braided line directly to the spool), you can tie braid directly to your spool using a uni-knot.

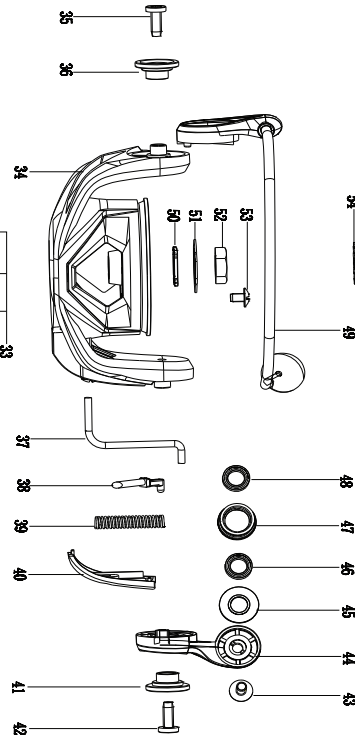
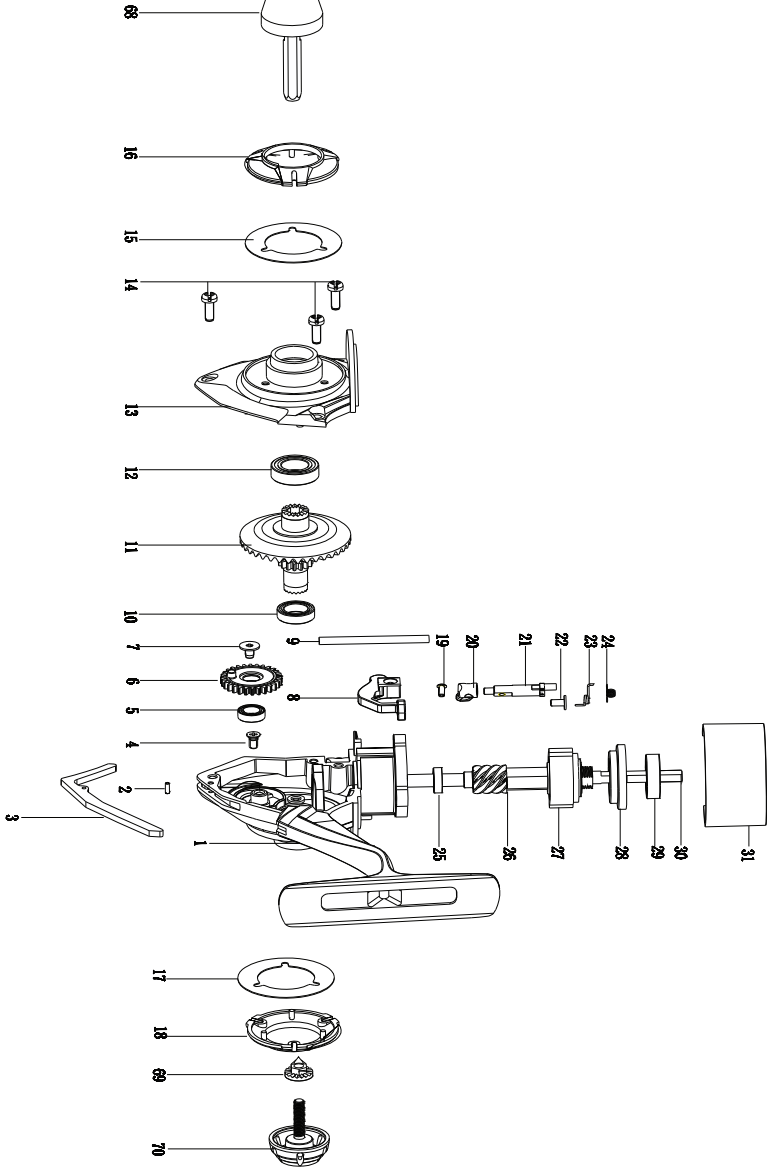
If your Lew's® spinning reel does not have a knurled spool or rubber arbor, you will need to first tie on and spool at least 20 revolutions of monofilament line, with either a back-to-back uni-knot or an Albright knot.

Continue to spool your reel as normal, keeping strong tension on the line to ensure the line is firmly wound onto the spool to keep from "digging in" to underlying line layers when pressure is put on the line from fighting fish.

FAILURE TO PROPERLY SPOOL BRAIDED LINE ONTO YOUR REELS SPOOL WILL RESULT IN LINE SLIPPAGE, AND THE IMPRESSION YOUR DRAG IS NOT WORKING PROPERLY.



Mach Crush[®]
 MCR200A
 MCR300A
 MCR400A



KEY NO.	PART NAME	KEY NO.	PART NAME
1	BODY	36	CLIP
2	PIN	37	KICK LEVER
3	BODY REAR DECORATION COVER	38	BAIL ARM SUPPORT PIN
4	SCREW	39	SPRING
5	BALL BEARING	40	BAIL ARM COVER
6	OSCILLATION GEAR	41	CLIP
7	SCREW	42	SCREW
8	SLIDE	43	SCREW
9	SLIDE GUIDE PIN	44	BAIL ARM
10	BALL BEARING	45	WASHER
11	DRIVE GEAR	46	BALL BEARING
12	BALL BEARING	47	LINE ROLLER
13	BODY SIDE	48	BALL BEARING
14	SCREW	49	BAIL ASS'Y
15	BODY SIDE DECORATION INSIDE COVER	50	WASHER
16	BODY SIDE DECORATION OUTSIDE COVER	51	WASHER
17	BODY DECORATION INSIDE COVER	52	ROTOR NUT
18	BODY DECORATION OUTSIDE COVER	53	SCREW
19	SCREW	54	CLICK GEAR
20	ANTI-REVERSE BUTTON	55	WASHER
21	ANTI-REVERSE	56	BALL BEARING
22	SCREW	57	BALL BEARING
23	SPRING	58	RING
24	SPRING	59	SPOOL ASS'Y
25	BUSHER	60	LINE WASHER
26	PINION GEAR	61	DRAG WASHER
27	ONE WAY CLUTCH BALL BEARING	62	LINE WASHER
28	ONE WAY CLUTCH FIXED BUSHER	63	DRAG WASHER
29	BALL BEARING	64	LINE WASHER
30	MAIN SHAFT	65	DRAG WASHER
31	ONE-WAY CLUTCH FIXED PLATED	66	RING
32	ONE-WAY CLUTCH FIXED PLATED	67	DRAG KNOB
33	ONE-WAY CLUTCH FIXED SCREW	68	HANDLE ASS'Y WITH 2 BALL BEARING
34	ROTOR	69	WASHER
35	SCREW	70	HANDLE CAP

