



MH2SHA



HS
7.5:1
HIGH SPEED

10 Bearing System

SPEED GEARS

Reel Specifications

Model	Weight (oz.)	Line Capacity (yds./lbs.)	Gear Ratio	RPT* (in.)
MH2SHA	7.2	110/12	7.5:1	30"

*Rotation per turn

FEATURES:

- One-piece lightweight SLP graphite frame and side plates with 3 drain ports
- 10-bearing system includes Zero Reverse® one-way clutch bearing
- Double anodized, aluminum spool tension knob with audible click
- Double anodized, aluminum drag star
- Durable Rulon drag system, provides up to 15lbs. of drag power
- Speed Lube for exceptional smoothness and uninterrupted performance in all weather conditions from extreme heat to freezing cold
- Anodized aluminum bowed drag star with audible click adjustment
- Quick release sideplate lock lever
- Zirconia line guide
- Bowed 95 mm aluminum handle with Winn® Dri-Tac knobs

Performance – Right out of the Box!

Your Speed Spool® SLP reel is designed for performance and functionality. From the way it conforms to your hand, to the way it reacts crisply and effortlessly to your command, you'll know the minute you grab onto your Speed Spool® SLP that you've got a quality reel.

Your Speed Spool SLP reel exploits several new developments which will allow you to set yourself apart from the competition.



Speed Gears Lew's Speed Gears are cut on precision Hamai CNC gear hobbing machines resulting in an efficient drive train with less gear feel.

One-piece Graphite Frame and Sideplates Your Speed Spool® reel utilizes a one-piece, lightweight graphite frame and sideplates. Lightweight plus strong, so you'll never have to worry about frame torque or twisting.

Machine Forged Double Anodized Aluminum Spool The machine forged double anodized aluminum spool of your Speed Spool reel is engineered for deep capacity and double anodized for superior oxidation and abrasion resistance.



Zero Reverse Bearing The handle on your Speed Spool® reel will only rotate forward for rock solid hook setting. When you release the handle, it will hold its position because of the Zero-Reverse bearing, never losing an inch on your catch; an invaluable property to have when you're pulling it in.



Full-Release Magnetic Control System (MCS) In order to combat backlash your Speed Spool reel is furnished with an externally adjustable, full-release magnetic braking system. As the spool accelerates it experiences magnetic resistance, which can be controlled with a dial on the palming sideplate. A full-release magnetic brake has the ability to be backed for enough away from the spool to completely negate any effect on the acceleration of the spool.



Cast Control System A second feature exists to prevent backlash, the Cast Control System. An adjustment knob is found next to the star drag. The function saddles the spool shaft with steady pressure in order to stabilize spool speed.

To calibrate the system reel your lure in until it rests on the tip of the rod, then tighten the knob until taut. Depress the thumb bar, and holding the rod horizontally loosen the knob slowly until the lure begins to descend. The spool should continue to spin after the lure contacts the ground, but should not complete more than one full rotation. If the spool does not continue to spin, the knob is too tight. If the spool completes more than one rotation, the knob is too loose. Repeat until you have achieved the desired results.

Bowed 95mm Aluminum Handle Our bowed aluminum handle will give you all the cranking power you need. The Winn Dri-Tac knobs are an added bonus known for a comfortable fit and ease for all day fishing.



SLP Baitcast reels are designed to be **Super Low Profile**.
Driven by innovation – Fueled with Passion
Feel the Difference!

ATTENTION BRAIDED LINE USERS!

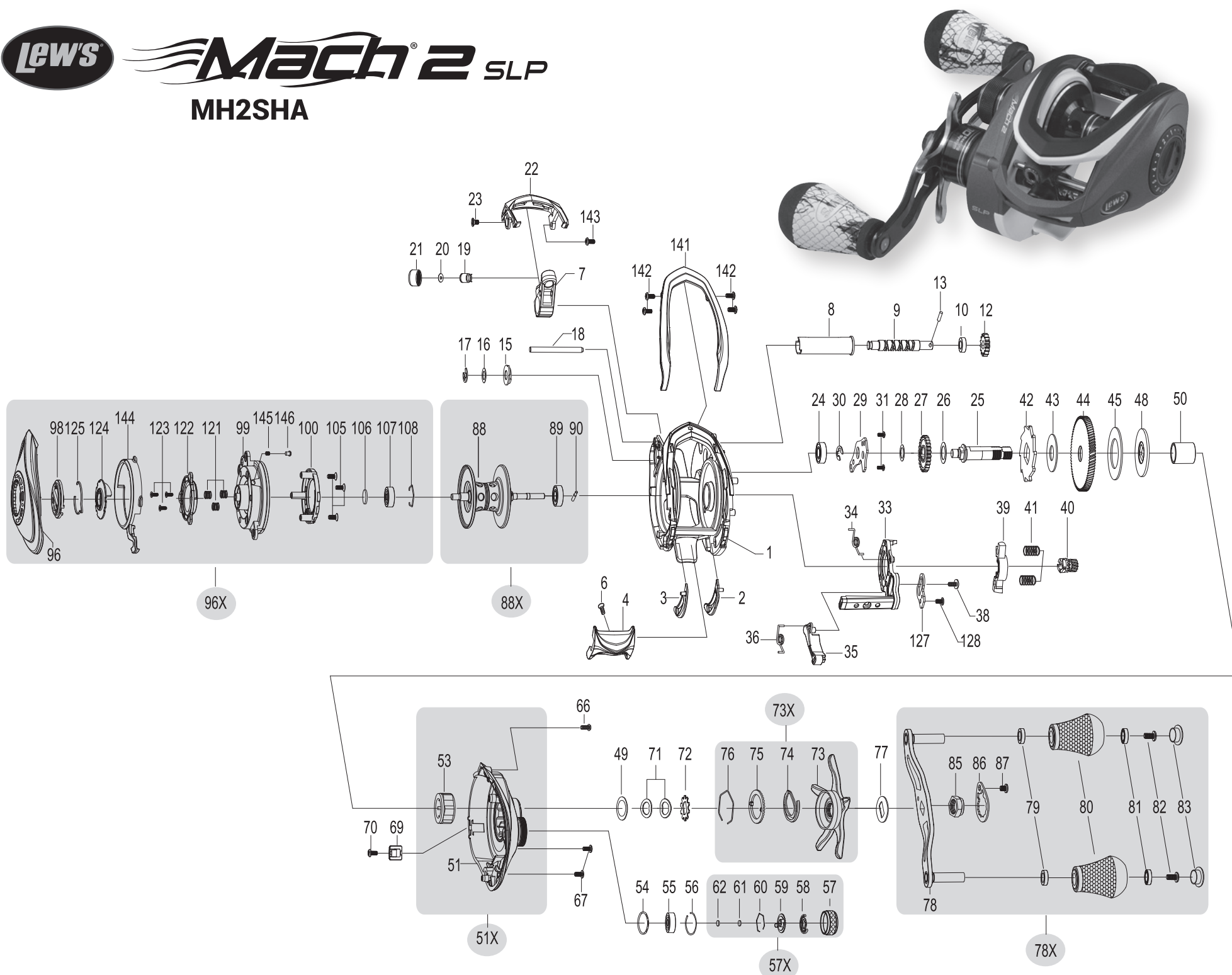
If your Lew's® Baitcast reel has pre-drilled holes in the spool, you may tie your braid directly to the spool, by passing the braid thru the provided holes and tying a uni-knot.

If your Lew's® baitcast reel does not have pre-drilled holes in the spool, you will need to first tie on and spool at least 20 revolutions of monofilament line, and then tie your braided line to the monofilament line, with either a back-to-back uni-knot or an Albright knot.

Continue to spool your reel as normal, keeping strong tension on the line to ensure the line is firmly wound onto the spool to keep from "digging in" to underlying line layers when pressure is put on the line from fighting fish.

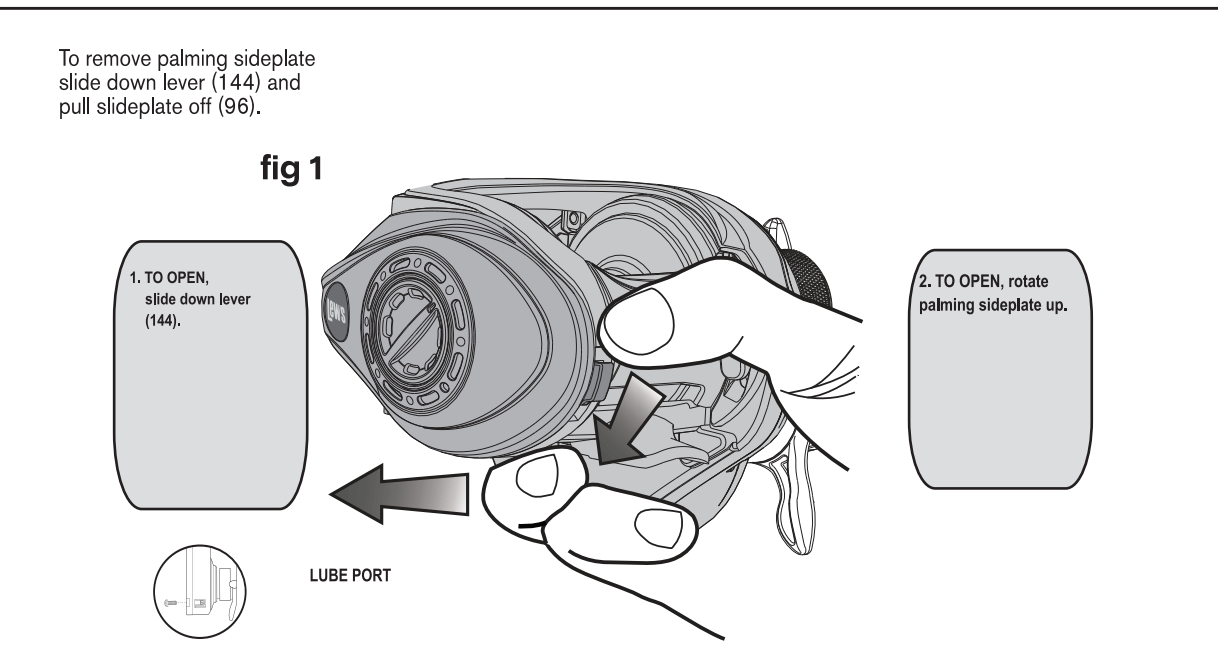
FAILURE TO PROPERLY SPOOL BRAIDED LINE ONTO YOUR REELS SPOOL WILL RESULT IN LINE SLIPPAGE, AND THE IMPRESSION YOUR DRAG IS NOT WORKING PROPERLY.

Lew's *Mach² SLP*
MH2SHA



KEY #	PARTS NAME	KEY #	PARTS NAME	KEY #	PARTS NAME
1	FRAME	42	RATCHET	80	HANDLE KNOB-2
2	CLUTCH BAR PLATE-R	43	RATCHET WASHER	81	BALL BEARING-2
3	CLUTCH BAR PLATE-L	44	DRIVE GEAR	82	HANDLE KNOB SCREW-2
4	CLUTCH BAR	45	DRAG WASHER-L	83	HANDLE KNOB CAP-2
6	CLUTCH BAR SCREW	46	DRAG WASHER-D1	85	HANDLE NUT
7	LEVELWIND ASSEMBLY	47	DRAG WASHER-A	86	HANDLE NUT RETAINER
8	PIPE	48	DRAG WASHER-D2	87	HANDLE NUT RETAINER SCREW
9	WORMSHAFT	49	SLEEVE WASHER (OPTIONAL)	88	SPOOL
10	BALL BEARING	50	SLEEVE	88X	SPOOL ASSEMBLY
12	IDLER-S	51	GEAR SIDEPLATE	89	BALL BEARING
13	WORM SHAFT PIN	51X	GEAR SIDEPLATE ASSEMBLY	90	PIN
15	WORM SHAFT BUSHING	53	ONE-WAY CLUTCH	96	PALM SIDEPLATE
16	WORM SHAFT WASHER (OPT)	54	O-RING	96X	PALM SIDEPLATE ASSEMBLY
17	E-RING	55	BALL BEARING	98	CONTROL DIAL
18	PILLAR	56	BEARING RETAINER	99	SPOOL COVER
19	LEVELWIND PIN	57	CAST CONTROL CAP	100	MAGNET HOLDER ASSEMBLY
20	SPACER (OPTIONAL)	57X	CAST CONTROL CAP ASS'LY	105	SPOOL COVERScrew-3
21	LEVELWIND NUT	58	CLICKER	106	SPOOL SPACER (A)
22	FRONT COVER	59	CLICKPLATE	107	BALL BEARING
23	FRONT COVER SCREW-A	60	CLICKPLATE RETAINER	108	BEARING RETAINER
24	BALL BEARING	61	TENSION WASHER	111	DRAG SPRING WASHER
25	CRANKSHAFT	62	SPOOL SPACE-B	121	SLIDE CAM SPRING
26	IDLER-L WASHER-A	66	GEAR SIDEPLATE SCREW-A	122	SLIDE CAM-M
27	IDLER-L	67	GEAR SIDEPLATE SCREW	123	SLIDE CAM SCREW
28	IDLER-L WASH-B	69	LUBE PORT CAP	124	DIAL CAM-M
29	BEARING PLATE	70	LUBE PORT CAP SCREW	125	CONTROL DIAL CLICK SPRING
30	E-RING	71	DRAG SPRING WASHER	127	LINK PLATE
31	BEARING PLATE SCREW-2	73	STAR DRAG	128	LINKPLATE SCREW
33	CLUTCH CAM	73X	STAR DRAG ASSEMBLY	137	DRAG SPACER
34	CLUTCH SPRING	74	CLICKER	141	HOOD
35	KICK LEVER	75	CLICK PLATE	142	HOOD SCREW
36	KICK LEVER SPRING	76	CLICK PLATE RETAINER	143	FRONT COVER SCREW-B
38	CLUTCH CAM SCREW	77	HANDLE WASHER	144	LOCK LEVER
39	PINION YOKE	78	HANDLE	145	CLICK PIN SPRAY
40	PINION GEAR	78X	HANDLE ASSEMBLY	146	CLICK PIN
41	PINION YOKE SPRING-2	79	BALL BEARING		

MAINTENANCE AND CARE
When applying lubricant to your Speed Spool reel, avoid using multi-purpose oil. Use lightweight oils or greases made for fishing reels. Apply oil to all bearings, the crankshaft and the worm gear. Apply grease to the bushings, pinion gears, drive gears, and crank gears.
After usage, your reel should be inspected for dirt or sand and cleaned if excessive build-up is present. If your reel has come in contact with saltwater it is important to flush all parts with water, dry and re-lubricate your reel. Through diligent cleaning and maintenance your Lew's reel will provide you with years of reliability and sound performance.





MH2SHLA

Left Hand / Gaucher
Mano izquierda



HS
7.5:1
HIGH SPEED

10 Bearing System

SPEED GEARS

Reel Specifications

Model	Weight (oz.)	Line Capacity (yds./lbs.)	Gear Ratio	RPT* (in.)
MH2SHLA	7.2	110/12	7.5:1	30"

*Rotation per turn

FEATURES:

- One-piece lightweight SLP graphite frame and side plates with 3 drain ports
- 10-bearing system includes Zero Reverse® one-way clutch bearing
- Double anodized, aluminum spool tension knob with audible click
- Double anodized, aluminum drag star
- Durable Rulon drag system, provides up to 15lbs. of drag power
- Speed Lube for exceptional smoothness and uninterrupted performance in all weather conditions from extreme heat to freezing cold
- Anodized aluminum bowed drag star with audible click adjustment
- Quick release sideplate lock lever
- Zirconia line guide
- Bowed 95 mm aluminum handle with Winn® Dri-Tac knobs

Performance – Right out of the Box!

Your Speed Spool® SLP reel is designed for performance and functionality. From the way it conforms to your hand, to the way it reacts crisply and effortlessly to your command, you'll know the minute you grab onto your Speed Spool® SLP that you've got a quality reel.

Your Speed Spool SLP reel exploits several new developments which will allow you to set yourself apart from the competition.



Speed Gears Lew's Speed Gears are cut on precision Hamai CNC gear hobbing machines resulting in an efficient drive train with less gear feel.

One-piece Graphite Frame and Sideplates Your Speed Spool® reel utilizes a one-piece, lightweight graphite frame and sideplates. Lightweight plus strong, so you'll never have to worry about frame torque or twisting.

Machine Forged Double Anodized Aluminum Spool The machine forged double anodized aluminum spool of your Speed Spool reel is engineered for deep capacity and double anodized for superior oxidation and abrasion resistance.



Zero Reverse Bearing The handle on your Speed Spool® reel will only rotate forward for rock solid hook setting. When you release the handle, it will hold its position because of the Zero-Reverse bearing, never losing an inch on your catch; an invaluable property to have when you're pulling it in.

Magnetic Control System



Full-Release Magnetic Control System (MCS)

In order to combat backlash your Speed Spool reel is furnished with an externally adjustable, full-release magnetic braking system. As the spool accelerates it experiences magnetic resistance, which can be controlled with a dial on the palming sideplate. A full-release magnetic brake has the ability to be backed for enough away from the spool to completely negate any effect on the acceleration of the spool.

Cast Control System A second feature exists to prevent backlash, the Cast Control System. An adjustment knob is found next to the star drag. The function saddles the spool shaft with steady pressure in order to stabilize spool speed.

To calibrate the system reel your lure in until it rests on the tip of the rod, then tighten the knob until taut. Depress the thumb bar, and holding the rod horizontally loosen the knob slowly until the lure begins to descend. The spool should continue to spin after the lure contacts the ground, but should not complete more than one full rotation. If the spool does not continue to spin, the knob is too tight. If the spool completes more than one rotation, the knob is too loose. Repeat until you have achieved the desired results.

Bowed 95mm Aluminum Handle Our bowed aluminum handle will give you all the cranking power you need. The Winn Dri-Tac knobs are an added bonus known for a comfortable fit and ease for all day fishing.



SLP Baitcast reels are designed to be **Super Low Profile**.
Driven by innovation – Fueled with Passion
Feel the Difference!

ATTENTION BRAIDED LINE USERS!

If your Lew's® Baitcast reel has pre-drilled holes in the spool, you may tie your braid directly to the spool, by passing the braid thru the provided holes and tying a uni-knot.

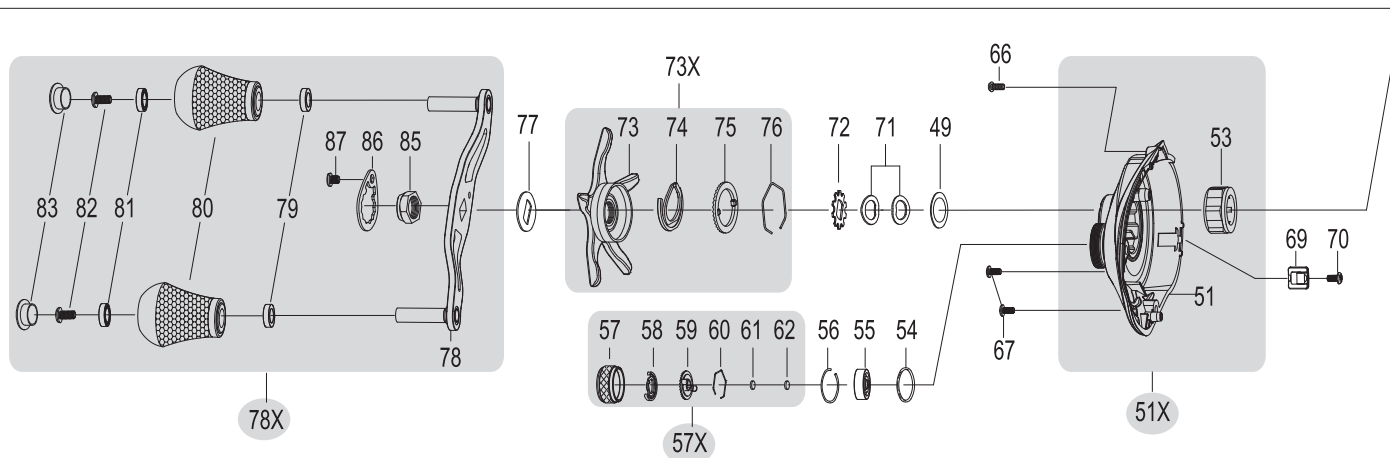
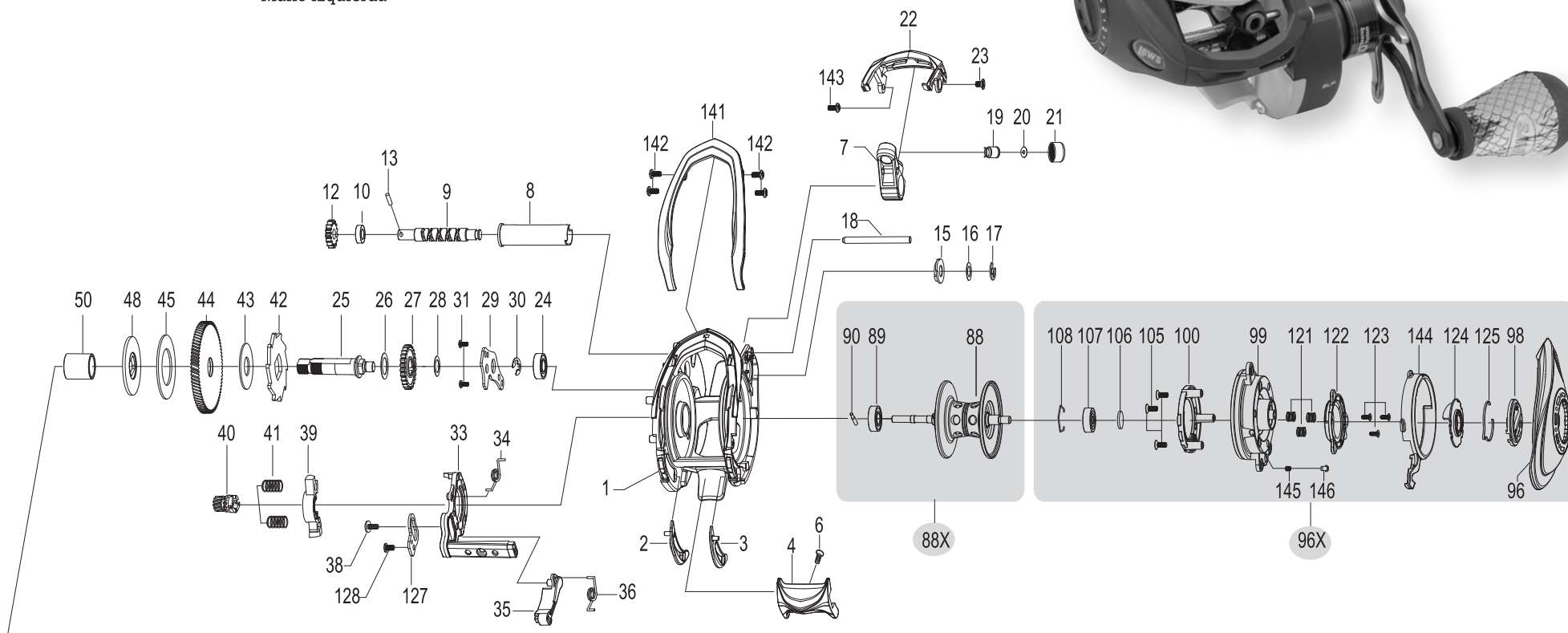
If your Lew's® baitcast reel does not have pre-drilled holes in the spool, you will need to first tie on and spool at least 20 revolutions of monofilament line, and then tie your braided line to the monofilament line, with either a back-to-back uni-knot or an Albright knot.

Continue to spool your reel as normal, keeping strong tension on the line to ensure the line is firmly wound onto the spool to keep from "digging in" to underlying line layers when pressure is put on the line from fighting fish.

FAILURE TO PROPERLY SPOOL BRAIDED LINE ONTO YOUR REELS SPOOL WILL RESULT IN LINE SLIPPAGE, AND THE IMPRESSION YOUR DRAG IS NOT WORKING PROPERLY.

MH2SHLA

Left Hand / Gaucher
Mano izquierda



KEY #	PARTS NAME	KEY #	PARTS NAME	KEY #	PARTS NAME
1	FRAME	42	RATCHET	80	HANDLE KNOB-2
2	CLUTCH BAR PLATE-R	43	RATCHET WASHER	81	BALL BEARING-2
3	CLUTCH BAR PLATE-L	44	DRIVE GEAR	82	HANDLE KNOB SCREW-2
4	CLUTCH BAR	45	DRAG WASHER-L	83	HANDLE KNOB CAP-2
6	CLUTCH BAR SCREW	46	DRAG WASHER-D1	85	HANDLE NUT
7	LEVELWIND ASSEMBLY	47	DRAG WASHER-A	86	HANDLE NUT RETAINER
8	PIPE	48	DRAG WASHER-D2	87	HANDLE NUT RETAINER SCREW
9	WORMSHAFT	49	SLEEVE WASHER (OPTIONAL)	88	SPOOL
10	BALL BEARING	50	SLEEVE	88X	SPOOL ASSEMBLY
12	IDLER-S	51	GEAR SIDEPLATE	89	BALL BEARING
13	WORM SHAFT PIN	51X	GEAR SIDEPLATE ASSEMBLY	90	PIN
15	WORM SHAFT BUSHING	53	ONE-WAY CLUTCH	96	PALM SIDEPLATE
16	WORM SHAFT WASHER (OPT)	54	O-RING	96X	PALM SIDEPLATE ASSEMBLY
17	E-RING	55	BALL BEARING	98	CONTROL DIAL
18	PILLAR	56	BEARING RETAINER	99	SPOOL COVER
19	LEVELWIND PIN	57	CAST CONTROL CAP	100	MAGNET HOLDER ASSEMBLY
20	SPACER (OPTIONAL)	57X	CAST CONTROL CAP ASS'BLY	105	SPOOL COVERScrew-3
21	LEVELWIND NUT	58	CLICKER	106	SPOOL SPACER (A)
22	FRONT COVER	59	CLICKPLATE	107	BALL BEARING
23	FRONT COVER SCREW-A	60	CLICKPLATE RETAINER	108	BEARING RETAINER
24	BALL BEARING	61	TENSION WASHER	111	DRAG SPRING WASHER
25	CRANKSHAFT	62	SPOOL SPACE-B	121	SLIDE CAM SPRING
26	IDLER-L WASHER-A	66	GEAR SIDEPLATE SCREW-A	122	SLIDE CAM-M
27	IDLER-L	67	GEAR SIDEPLATE SCREW	123	SLIDE CAM SCREW
28	IDLER-L WASH-B	69	LUBE PORT CAP	124	DIAL CAM-M
29	BEARING PLATE	70	LUBE PORT CAP SCREW	125	CONTROL DIAL CLICK SPRING
30	E-RING	71	DRAG SPRING WASHER	127	LINK PLATE
31	BEARING PLATE SCREW-2	73	STAR DRAG	128	LINKPLATE SCREW
33	CLUTCH CAM	73X	STAR DRAG ASSEMBLY	137	DRAG SPACER
34	CLUTCH SPRING	74	CLICKER	141	HOOD
35	KICK LEVER	75	CLICK PLATE	142	HOOD SCREW
36	KICK LEVER SPRING	76	CLICK PLATE RETAINER	143	FRONT COVER SCREW-B
38	CLUTCH CAM SCREW	77	HANDLE WASHER	144	LOCK LEVER
39	PINION YOKE	78	HANDLE	145	CLICK PIN SPRAY
40	PINION GEAR	78X	HANDLE ASSEMBLY	146	CLICK PIN
41	PINION YOKE SPRING-2	79	BALL BEARING		

MAINTENANCE AND CARE

When applying lubricant to your Speed Spool reel, avoid using multi-purpose oil. Use lightweight oils or greases made for fishing reels. Apply oil to all bearings, the crankshaft and the worm gear. Apply grease to the bushings, pinion gears, drive gears, and crank gears.

After usage, your reel should be inspected for dirt or sand and cleaned if excessive build-up is present. If your reel has come in contact with saltwater it is important to flush all parts with water, dry and re-lubricate your reel. Through diligent cleaning and maintenance your Lew's reel will provide you with years of reliability and sound performance.

To remove palming sideplate slide down lever (144) and pull sideplate off (96).

fig 1

