



Mach SMASH
SLP MHS1SH

**Driven by innovation – Fueled with Passion
Feel the Difference!**



**HS
7.5:1
HIGH SPEED**

Reel Specifications

Model	Weight (oz.)	Gear Ratio	Line Capacity (yds./lbs.)	RPT* (in.)
MHS1SH	7.0	7.5:1	110/12	30

*Recovery per turn.

FEATURES:

- One-piece SLP graphite frame with 3-drain ports and sideplates
- Premium 8-bearing system with stainless steel double shielded ball bearings and Zero Reverse® one-way clutch bearing
- Externally adjustable Magnetic Control System(MCS)
- Lightweight anodized aluminum 32mm spool
- High strength solid brass Speed Gears®, cut on precision Hamai CNC gear hobbing machines
- Durable Rulon drag system provides up to 15lbs. drag power
- Speed Lube® for exceptional smoothness and uninterrupted performance in all weather conditions from extreme heat to freezing cold
- Bowed, graphite drag star
- Zirconia line guide • Combat Grip® thumb bar
- Anodized, aluminum spool tension cap
- 95mm bowed aluminum handle with Lew's® custom Combat Grip® contoured paddles

Performance — Right out of the Box!

Your Speed Spool® reel is designed for performance and functionality. From the way it conforms to your hand, to the way it reacts crisply and effortlessly to your command, you'll know the minute you grab onto your Speed Spool® that you've got a quality reel. Your Speed Spool® reel exploits several new developments which will allow you to set yourself apart from the competition.

One-piece Graphite Frame and Sideplates

Your Speed Spool® reel utilizes a one-piece, lightweight graphite frame and sideplates. Lightweight plus strong, so you'll never have to worry about frame torque or twisting.



Speed Gears Lew's Speed Gears are cut on precision Hamai CNC gear hobbing machines resulting in an efficient drive train with less gear feel.



Zero Reverse Bearing The handle on your Speed Spool reel will only rotate forward for rock solid hook setting. When you release the handle, it will hold its position because of the Zero Reverse bearing, never losing an inch on your catch; an invaluable property to have when you're pulling it in.

Full-Release Magnetic Control System (MCS)

In order to combat backlash your Speed Spool reel is furnished with an externally adjustable, full-release magnetic braking system. As the spool accelerates it experiences magnetic resistance, which can be controlled with a dial on the palming sideplate. A full-release magnetic brake has the ability to be backed for enough away from the spool to completely negate any effect on the acceleration of the spool.



Cast Control System

A second feature to prevent backlash is the Cast Control System. An adjustment knob is found next to the star drag. The function saddles the spool shaft with steady pressure in order to stabilize spool speed.

To calibrate the system reel your lure in until it rests on the tip of the rod, then tighten the knob until taut. Depress the thumb bar, and holding the rod horizontally loosen the knob slowly until the lure begins to descend. The spool should continue to spin after the lure contacts the ground, but should not complete more than one full rotation. If the spool does not continue to spin, the knob is too tight. If the spool completes more than one rotation, the knob is too loose. Repeat until you have achieved the desired results.

Bowed 95mm Aluminum Handle The 95mm bowed aluminum handle will give you all the cranking power you need. The Lew's custom Combat Grip® handle knobs are an added bonus and will provide comfortable fit for all day fishing.

ATTENTION BRAIDED LINE USERS!

If your Lew's Baitcast reel has pre-drilled holes in the spool, you may tie your braid directly to the spool, by passing the braid thru the provided holes and tying a uni-knot.

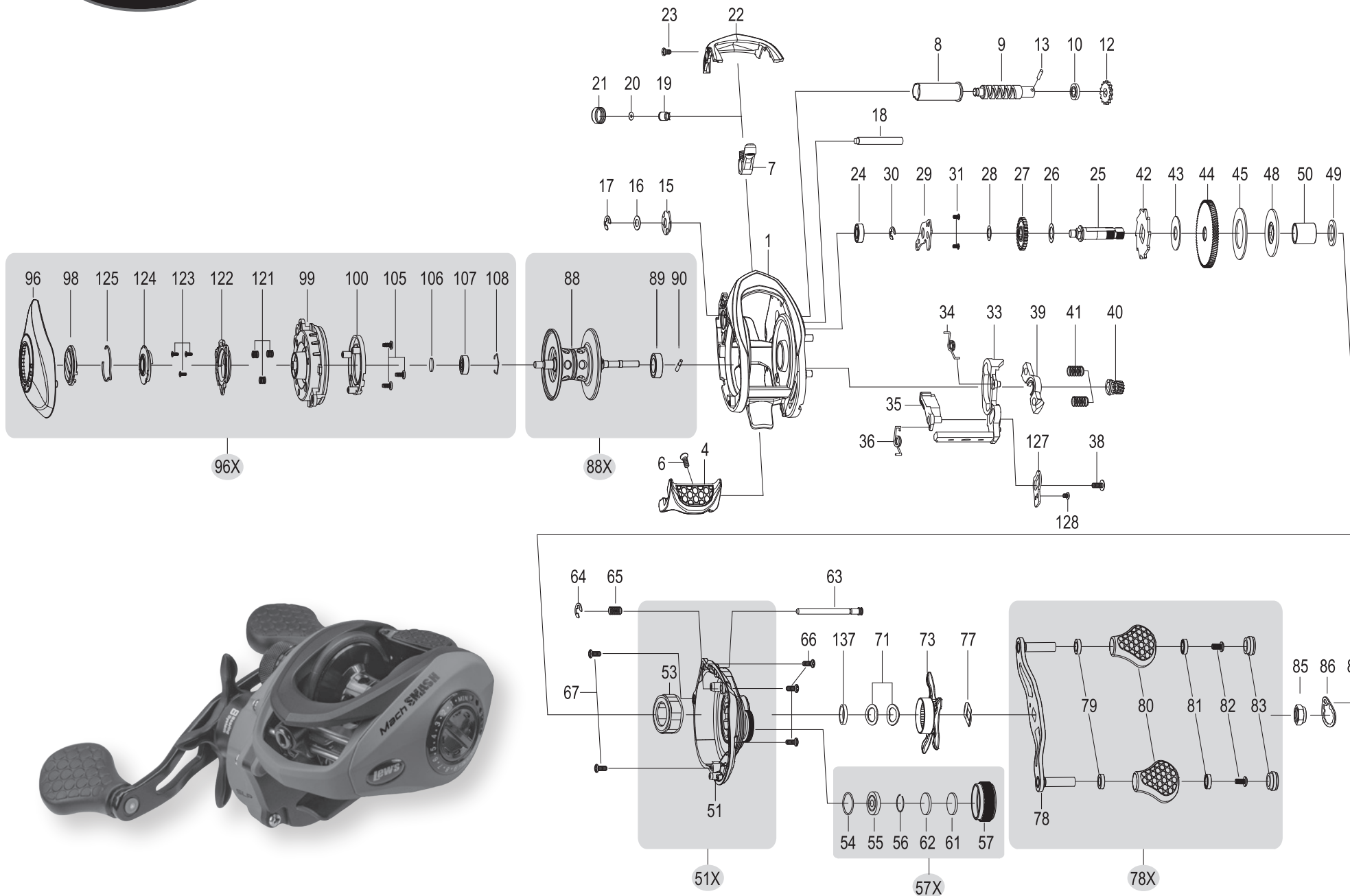
If your Lew's baitcast reel does not have pre-drilled holes in the spool, you will need to first tie on and spool at least 20 revolutions of monofilament line, and then tie your braided line to the monofilament line, with either a back-to-back uni-knot or an Albright knot.

Continue to spool your reel as normal, keeping strong tension on the line to ensure the line is firmly wound onto the spool to keep from "digging in" to underlying line layers when pressure is put on the line from fighting fish.

FAILURE TO PROPERLY SPOOL BRAIDED LINE ONTO YOUR REELS SPOOL WILL RESULT IN LINE SLIPPAGE, AND THE IMPRESSION YOUR DRAG IS NOT WORKING PROPERLY.

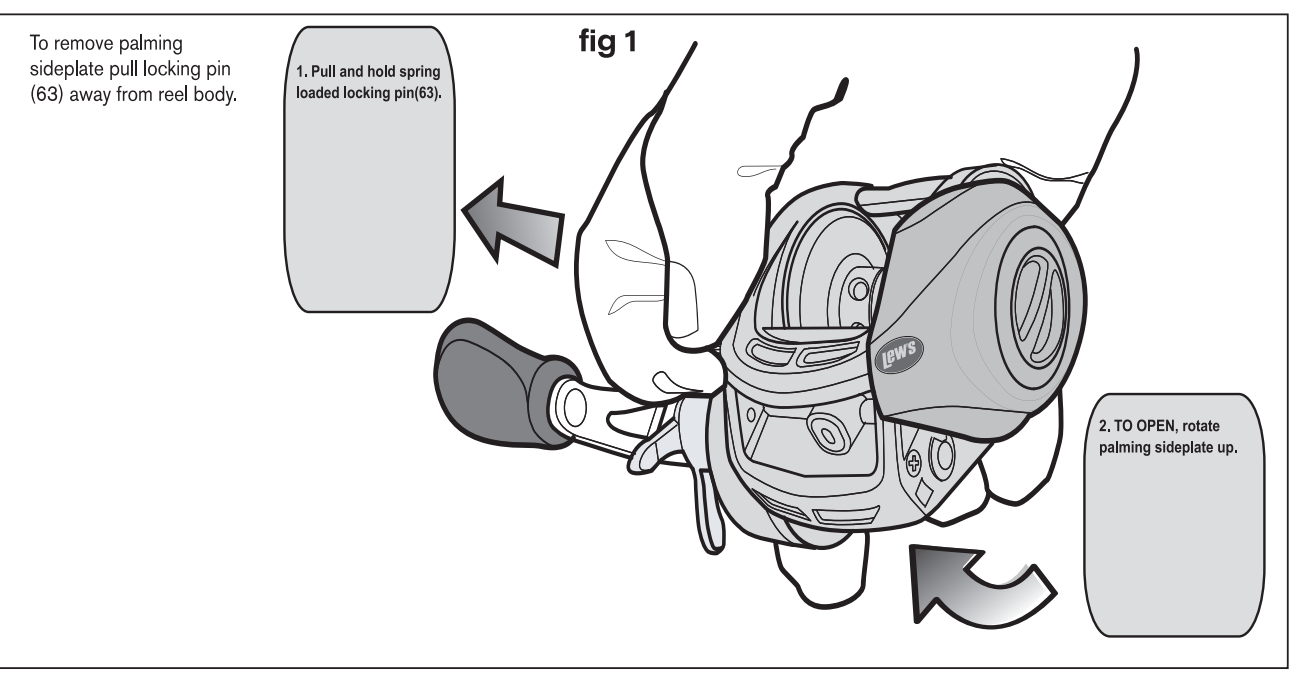


Mach SMASH
SLP MHS1SH



KEY #	PARTS NAME	KEY #	PARTS NAME	KEY #	PARTS NAME
1	FRAME	38	CLUTCH CAM SCREW	78X	HANDLE ASSEMBLY
4	CLUTCH BAR	39	PINION YOKE	79	BUSHING
6	CLUTCH BAR SCREW	40	PINION GEAR	80	HANDLE KNOB
7	LEVELWIND ASSEMBLY	41	PINION YOKE SPRING	81	BALL BEARING
8	PIPE	42	RATCHET	82	HANDLE KNOB SCREW
9	WORM SHAFT	43	RATCHET WASHER	83	HANDLE KNOB CAP
10	BALL BEARING	44	DRIVE GEAR	85	HANDLE NUT
12	IDLER-S	45	DRAG WASHER-L	86	HANDLE NUT RETAINER
13	WORM SHAFT PIN	48	DRAG WASHER-D2	87	HANDLE NUT RETAINER SCREW
15	WORM SHAFT BUSHING-B	49	SLEEVE WASHER (OPTIONAL)	88	SPOOL
16	WORM SHAFT WASHER (OPT)	50	SLEEVE	88X	SPOOL ASSEMBLY
17	E-RING	51	GEAR SIDEPLATE	89	BALL BEARING
18	PILLAR	51X	GEAR SIDEPLATE ASSEMBLY	90	PIN
19	LEVELWIND PIN	53	ONE-WAY CLUTCH BEARING	96	PALM SIDEPLATE
20	SPACER (OPTIONAL)	54	O-RING	96X	PALM SIDEPLATE ASSEMBLY
21	LEVELWIND NUT	55	BALL BEARING	98	CONTROL DIAL
22	FRONT COVER	56	BEARING RETAINER	99	SPOOL COVER
23	FRONT COVER SCREW	57	CAST CONTROL CAP	100	MAGNET HOLDER ASSEMBLY
24	BALL BEARING	57X	CAST CONTROL CAP ASS'BL Y	105	SPOOL COVER SCREW
25	CRANKSHAFT	61	TENSION WASHER	106	SPOOL SPACER (A)
26	IDLER-L WASHER-A	62	SPOOL SPACER-B	107	BALL BEARING
27	IDLER-L	63	LOCKING PIN	108	BEARING RETAINER
28	IDLER-L WASHER-B	64	E-RING	121	SLIDE CAM SPRING
29	BEARING PLATE	65	LOCKING PIN SPRING	122	SLIDE CAM-H
30	E-RING	66	GEAR SIDEPLATE SCREW-A	123	SLIDE CAM SCREW
31	BEARING PLATE SCREW	67	GEAR SIDEPLATE SCREW-B	124	SLIDE CAM-D
33	CLUTCH CAM	71	DRAG SPRING WASHER	125	CLICK SPRING
34	CLUTCH SPRING	73	STAR DRAG	127	LINK PLATE
35	KICK LEVER	77	HANDLE WASHER	128	DRAG SPACER
36	KICK LEVER SPRING	78	HANDLE		

MAINTENANCE AND CARE
When applying lubricant to your Speed Spool reel, avoid using multi-purpose oil. Use lightweight oils or greases made for fishing reels. Apply oil to all bearings, the crankshaft and the worm gear. Apply grease to the bushings, pinion gears, drive gears, and crank gears.
After usage, your reel should be inspected for dirt or sand and cleaned if excessive build-up is present. If your reel has come in contact with saltwater it is important to flush all parts with water, dry and re-lubricate your reel. Through diligent cleaning and maintenance your Lew's reel will provide you with years of reliability and sound performance.





Mach SMASH
SPEED SPOOL® SLP MHS1SHL

Driven by innovation – Fueled with Passion
Feel the Difference!



HS
7.5:1
 HIGH SPEED

Reel Specifications

Model	Weight (oz.)	Gear Ratio	Line Capacity (yds./lbs.)	RPT* (in.)
MHS1SHL	7.0	7.5:1	110/12	30

*Recovery per turn.

FEATURES:

- One-piece SLP graphite frame with 3-drain ports and sideplates
- Premium 8-bearing system with stainless steel double shielded ball bearings and Zero Reverse® one-way clutch bearing
- Externally adjustable Magnetic Control System(MCS)
- Lightweight anodized aluminum 32mm spool
- High strength solid brass Speed Gears®, cut on precision Hamai CNC gear hobbing machines
- Durable Rulon drag system provides up to 15lbs. drag power
- Speed Lube® for exceptional smoothness and uninterrupted performance in all weather conditions from extreme heat to freezing cold
- Bowed, graphite drag star
- Zirconia line guide • Combat Grip® thumb bar
- Anodized, aluminum spool tension cap
- 95mm bowed aluminum handle with Lew's® custom Combat Grip® contoured paddles

Performance — Right out of the Box!

Your Speed Spool® reel is designed for performance and functionality. From the way it conforms to your hand, to the way it reacts crisply and effortlessly to your command, you'll know the minute you grab onto your Speed Spool® that you've got a quality reel. Your Speed Spool® reel exploits several new developments which will allow you to set yourself apart from the competition.

One-piece Graphite Frame and Sideplates

Your Speed Spool® reel utilizes a one-piece, lightweight graphite frame and sideplates. Lightweight plus strong, so you'll never have to worry about frame torque or twisting.



Speed Gears Lew's Speed Gears are cut on precision Hamai CNC gear hobbing machines resulting in an efficient drive train with less gear feel.



Zero Reverse Bearing The handle on your Speed Spool reel will only rotate forward for rock solid hook setting. When you release the handle, it will hold its position because of the Zero Reverse bearing, never losing an inch on your catch; an invaluable property to have when you're pulling it in.

Full-Release Magnetic Control System (MCS)

In order to combat backlash your Speed Spool reel is furnished with an externally adjustable, full-release magnetic braking system. As the spool accelerates it experiences magnetic resistance, which can be controlled with a dial on the palming sideplate. A full-release magnetic brake has the ability to be backed for enough away from the spool to completely negate any effect on the acceleration of the spool.



Cast Control System

A second feature to prevent backlash is the Cast Control System. An adjustment knob is found next to the star drag. The function saddles the spool shaft with steady pressure in order to stabilize spool speed.

To calibrate the system reel your lure in until it rests on the tip of the rod, then tighten the knob until taut. Depress the thumb bar, and holding the rod horizontally loosen the knob slowly until the lure begins to descend. The spool should continue to spin after the lure contacts the ground, but should not complete more than one full rotation. If the spool does not continue to spin, the knob is too tight. If the spool completes more than one rotation, the knob is too loose. Repeat until you have achieved the desired results.

Bowed 95mm Aluminum Handle The 95mm bowed aluminum handle will give you all the cranking power you need. The Lew's custom Combat Grip® handle knobs are an added bonus and will provide comfortable fit for all day fishing.

ATTENTION BRAIDED LINE USERS!

If your Lew's Baitcast reel has pre-drilled holes in the spool, you may tie your braid directly to the spool, by passing the braid thru the provided holes and tying a uni-knot.

If your Lew's baitcast reel does not have pre-drilled holes in the spool, you will need to first tie on and spool at least 20 revolutions of monofilament line, and then tie your braided line to the monofilament line, with either a back-to-back uni-knot or an Albright knot.

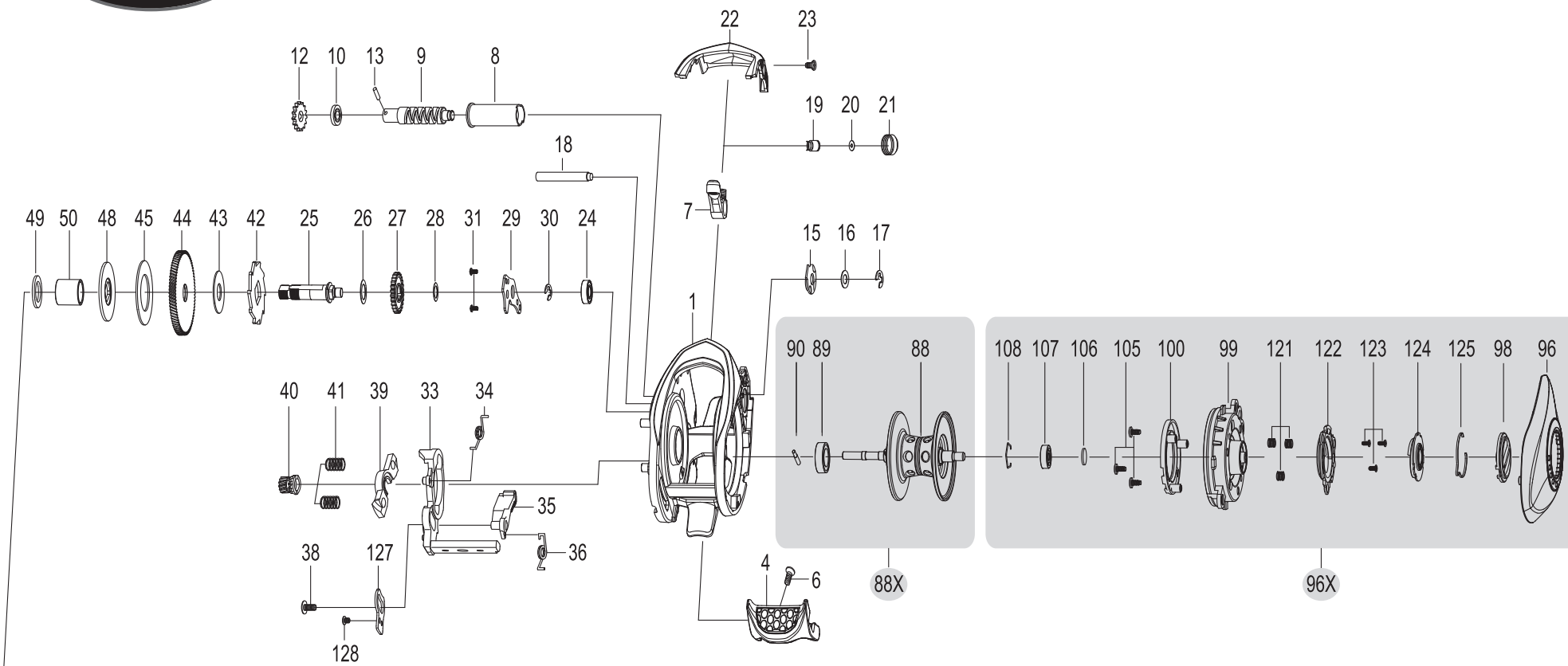
Continue to spool your reel as normal, keeping strong tension on the line to ensure the line is firmly wound onto the spool to keep from "digging in" to underlying line layers when pressure is put on the line from fighting fish.

FAILURE TO PROPERLY SPOOL BRAIDED LINE ONTO YOUR REELS SPOOL WILL RESULT IN LINE SLIPPAGE, AND THE IMPRESSION YOUR DRAG IS NOT WORKING PROPERLY.

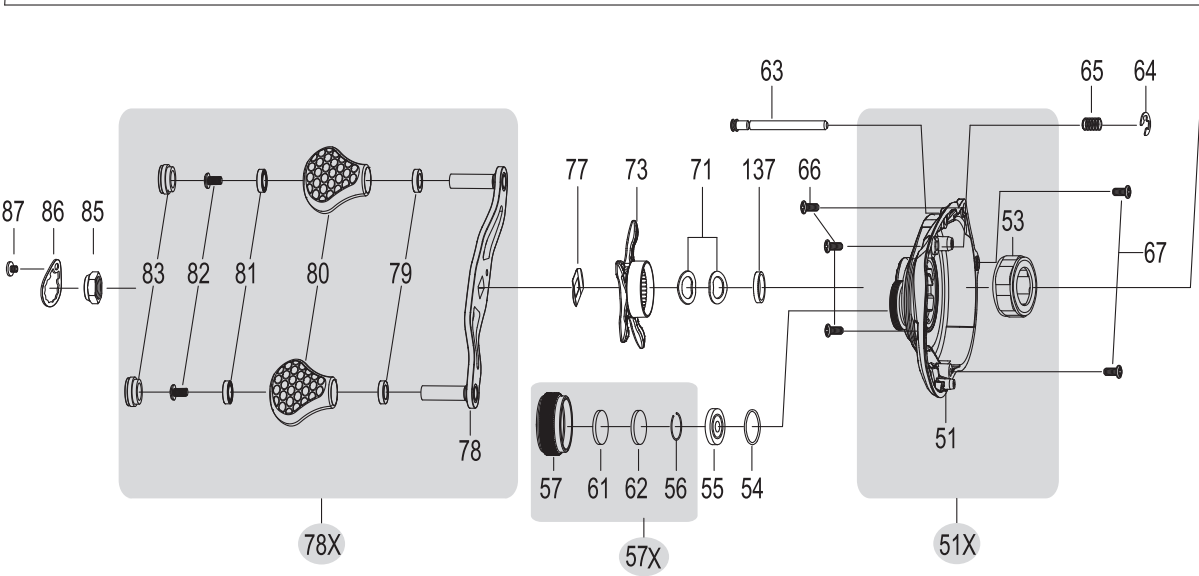


Mach SMASH

SPEED SPOOL® SLP MHS1SHL



KEY #	PARTS NAME	KEY #	PARTS NAME	KEY #	PARTS NAME
1	FRAME	38	CLUTCH CAM SCREW	78X	HANDLE ASSEMBLY
4	CLUTCH BAR	39	PINION YOKE	79	BUSHING
6	CLUTCH BAR SCREW	40	PINION GEAR	80	HANDLE KNOB
7	LEVELWIND ASSEMBLY	41	PINION YOKE SPRING	81	BALL BEARING
8	PIPE	42	RATCHET	82	HANDLE KNOB SCREW
9	WORM SHAFT	43	RATCHET WASHER	83	HANDLE KNOB CAP
10	BALL BEARING	44	DRIVE GEAR	85	HANDLE NUT
12	IDLER-S	45	DRAG WASHER-L	86	HANDLE NUT RETAINER
13	WORM SHAFT PIN	48	DRAG WASHER-D2	87	HANDLE NUT RETAINER SCREW
15	WORM SHAFT BUSHING-B	49	SLEEVE WASHER (OPTIONAL)	88	SPOOL
16	WORM SHAFT WASHER (OPT)	50	SLEEVE	88X	SPOOL ASSEMBLY
17	E-RING	51	GEAR SIDEPLATE	89	BALL BEARING
18	PILLAR	51X	GEAR SIDEPLATE ASSEMBLY	90	PIN
19	LEVELWIND PIN	53	ONE-WAY CLUTCH BEARING	96	PALM SIDEPLATE
20	SPACER (OPTIONAL)	54	O-RING	96X	PALM SIDEPLATE ASSEMBLY
21	LEVELWIND NUT	55	BALL BEARING	98	CONTROL DIAL
22	FRONT COVER	56	BEARING RETAINER	99	SPOOL COVER
23	FRONT COVER SCREW	57	CAST CONTROL CAP	100	MAGNET HOLDER ASSEMBLY
24	BALL BEARING	57X	CAST CONTROL CAP ASS'LY	105	SPOOL COVER SCREW
25	CRANKSHAFT	61	TENSION WASHER	106	SPOOL SPACER (A)
26	IDLER-L WASHER-A	62	SPOOL SPACER-B	107	BALL BEARING
27	IDLER-L	63	LOCKING PIN	108	BEARING RETAINER
28	IDLER-L WASHER-B	64	E-RING	121	SLIDE CAM SPRING
29	BEARING PLATE	65	LOCKING PIN SPRING	122	SLIDE CAM-H
30	E-RING	66	GEAR SIDEPLATE SCREW-A	123	SLIDE CAM SCREW
31	BEARING PLATE SCREW	67	GEAR SIDEPLATE SCREW-B	124	SLIDE CAM-D
33	CLUTCH CAM	71	DRAG SPRING WASHER	125	CLICK SPRING
34	CLUTCH SPRING	73	STAR DRAG	127	LINK PLATE
35	KICK LEVER	77	HANDLE WASHER	128	LINKPLATE SCREW
36	KICK LEVER SPRING	78	HANDLE	137	DRAG SPACER



MAINTENANCE AND CARE

When applying lubricant to your Speed Spool reel, avoid using multi-purpose oil. Use lightweight oils or greases made for fishing reels. Apply oil to all bearings, the crankshaft and the worm gear. Apply grease to the bushings, pinion gears, drive gears, and crank gears.

After usage, your reel should be inspected for dirt or sand and cleaned if excessive build-up is present. If your reel has come in contact with saltwater it is important to flush all parts with water, dry and re-lubricate your reel. Through diligent cleaning and maintenance your Lew's reel will provide you with years of reliability and sound performance.

